

# NEMOSCOPE

NORTHEAST MISSOURI STATE UNIVERSITY ALUMNI MAGAZINE

Spring, 1985

Volume 38, Number 1

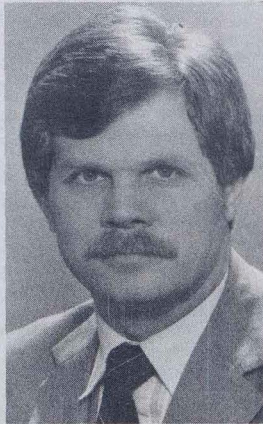


## 75 Years Young

p. 16

Bud Protiva, p. 4; Dr. David Wohlers, p. 6; NCACS Accreditation, p. 8;  
Lee Ann Howard, p. 14; 1984 Receptions, p. 15; Sports Update, p. 18;  
Letters, p. 2; Around the Quad, p.3; Alumni/Development, p. 10; New Members, p. 12;  
Alumni Notes, p. 20.

# letters



*One of the nice things about seeing alumni in person is that you meet a lot of wonderful people who otherwise might just be a computer label or annual notice for dues. Over the past year we have visited more cities than usual, from San Diego to Chicago, on to Tampa-St. Petersburg, not to mention our annual visits to St. Louis and frequent stops at Kansas City and Des Moines. If there is a common feeling among recent Kirksville graduates, it is the interest in how the school is doing.*

*There also seems to be a surprise that there are actually other Northeast people in the area. In Tampa, for example, two former Brookfield residents not only now have a lot to do with the music department at the University of South Florida, but their parents were also neighbors in Brookfield. They met at a Northeast reception.*

*Business associates attended the meeting in Des Moines. And plans were formulated for a future meeting in Chicago.*

*One of the big reasons these meetings have enjoyed some success is that in every case, Northeast alumni took an active role in planning the meeting. It makes a difference. If you would like to have an alumni meeting in your area, drop us a note and we will see about getting you on our schedule. If you write, be prepared to do some work.*

*One final note; remember you read it here first: Homecoming 1985 is Oct. 25-26. Make your room reservations now. The classes of 1935, 1945, 1960, and 1975 have planned reunions. Band members are talking about another reunion and if your special group would like to get together, let us know so we can assist with the arrangements.*

*Thomas R. ShROUT, Jr.*

Thomas R. ShROUT, Jr.  
Editor

*Special thanks to Suzanne Blair for setting up our cover photo. Suzanne is a senior majoring in Art Education.*

## NEMOSCOPE STAFF

President: Charles J. McClain  
 Editor in Chief: Thomas R. ShROUT, Jr.  
 Associate Editor: Greg Wright  
 Editorial: William H. Cable, Helen Bailey, David Clithero,  
 Michelle Yost, Kristy Hines  
 Production: Winston Vanderhoof, Janiene Ashby, Vicki  
 Klein, Michael Odneal  
 Photography: Ray Jagger

The NEMOSCOPE is published quarterly by the Alumni Office of Northeast Missouri State University, Kirksville, MO 63501-0828. Telephone 816-785-4125.

It has been brought to my attention that you have listed me as deceased in your alumni publication.

This is to inform you that I am very much alive and living with my husband, W. Edwin Hartford, a 1938 graduate of NMSU.

This year instead of getting once-a-year season's greetings from old friends and classmates, my husband received letters of condolence. This added nothing to our Christmas spirit!

It should be absolutely essential that you have your facts straight before publishing any information about an alumnus.

I do not understand your use of the word miscellaneous as I graduated with a Bachelor of Science Degree in Education.

I request a reply by return mail giving me the source of this erroneous information and your method of rectifying your mistake.

This could have far-reaching ramifications.

**Hazel Kuhn Hartford**  
(37)  
Lake St. Louis, Mo.

Congratulations! Your recent awards and accomplishments come as no surprise to alumni such as myself. We have long known of the excellence of the University's programs and the recognition from educational associations such as the Mitau Award was well-earned.

If alumni continue to support the University, perhaps the future students will receive the benefits of a fine education at a moderate price just as we did. We have long known of the very positive influence the University had on our careers and the rewards we and our families have received as a result of your help.

I hope to continue to support the University and also the Business Division Capital Campaign through matching grant contributions in the coming year. Keep up the fine work of educating the young people and others wishing to benefit from the University's fine programs. Their decision to attend Northeast will prove to be a very sound one as they begin or expand their working careers.

**John D. Schroeder** ('68)  
Manchester, Mo.

Here is a delayed, but no less sincere, congratulations on the best Homecoming concert in 25 years! Since I came here in 1960, no Homecoming concert has even approached this last one in sheer enjoyment, both of the participants and audience.

It was outstanding on two counts. First, every alumnus and alumna of whatever age could find some part of the program to relate to. It was great nostalgia and also very current. This also means that present students could enjoy it.

Second, instead of spending thousands of student fee dollars bringing in a group to which few of us oldtimers could relate, you used the fine talent of our current student body to show everybody that we have what it takes to do an outstanding show that is acceptable by anyone's standards.

More than one person observed that everyone left the concert smiling. That alone is quite an accomplishment.

Some kind of special recognition should be made of the Franklin Street Singers and the High Street Dancers and their directors, Rich McKinney and Al Srnka, for doing a superb job.

And finally, my congratulations to your office for having the great good sense to plan such an appropriate Homecoming event.

**Chandler Monroe**  
Professor of Speech

It was most thoughtful of you to send me the list of contributors to the Frederic Kirchberger Scholarship Fund, and I appreciate it very much.

It was pleasant to see how many still remember me. Some of the names took my memories back to almost prehistoric times, and some—I'm ashamed to admit—I didn't recognize at all! Of course, women often have the very inconsiderate habit of marrying men with strange names.

Once again, thank you very much. May I also take this opportunity to ask you to convey my best wishes to President McClain. Thanks to grapevine reports, I am still somewhat in touch with Kirksville happenings, and I continue to be impressed. All the best!

**Frederic Kirchberger**  
Professor Emeritus of Music  
Vienna, Austria

# AROUND the quad

Thank you very much for the alumni materials you send to me here in Bangkok. We recently had an alumni reunion here with Mrs. (Fran) McKinney and Kathy Rieck. There were about 100 alumni. But some of them live up in the country, too far away to stay in touch. However, I try hard to stay in touch.

The day when Mrs. McKinney and Kathy arrived was our happy day. We went to the airport to welcome them. Mrs. McKinney looked the same as when we stayed at NMSU.

After a party we had a chance to see the film about NMSU. We saw many things have changed there. NMSU is prospering! However, the longer we saw the film, the more we missed the University. I'm planning to visit soon if there is not a flood here again this year. The first office I will visit after Mrs. McKinney's is the Alumni Office.

Now Bangkok is in the rainy season so it rains very often. I wrote just to tell you how NMSU alumni in Bangkok are and how happy we were to meet representatives of NMSU and talk to them. The reunion ended with the "Old Missouri" song. It made Mrs. McKinney laugh because no one could sing it, but we tried with pleasure and with our hearts. I myself could not help laughing. So when I come to NMSU again, I have to learn how to sing this song. Maybe Mrs. McKinney will be kind enough to teach me.

Please let me know more about the University news again.

Praeet Kaewilai ('60)  
Bangkok, Thailand

Since my graduation in May '82 I've kept in contact with Dr. Lydia Inman. She suggested that I write to you and tell you of my new position and send to the Alumni News.

My new position is with the Kellogg's Sales Company, where I am a Sales Representative. I am their first and only St. Louis Unit Woman Rep. [In the St. Louis Division, (which includes: St. Louis, Champaign, Indianapolis and Louisville Units) there are five women total.] While attending Northeast and in the Home Economics Dept., I was the only woman to participate in cross country or any other sport as far as I knew of. I am currently a member of Gateway Athletics-St. Louis. Since graduation I've continued to run and train competitively. I've run the '83 St. Louis Marathon and have hit PR's (personal records) in the 10K, 8,000 meters, and 5K in '84. Coach Cochrane was a big influence on me.

If there is ever anything I can do or help out with in the future, please feel free to contact me.

Patti A. Lake  
'82

## letters

To correspond with the Alumni Office write to:

Thomas R. Shrout, Jr.  
Director of External Affairs  
A/H 202  
NMSU  
Kirksville, MO 63501

Your input is appreciated!

The University's on-campus bookstore changed hands in October. The University awarded a contract for the operation of the store to the Missouri Store Company of Columbia, Mo. Under the terms of the new agreement, the University is guaranteed \$90,000 a year. University officials estimate the new contract will free \$40,000 toward retirement of bonds on the Student Union Building, preventing further increases in student fees to pay those bonds.

NMSU is planning to install a sidewalk to Barnett Hall by next spring. The sidewalk to the practical arts building will run from Patterson Street along the west side of Franklin Street, and will cost approximately \$45,000. NMSU officials had been concerned about student safety in the area, as many students had to cross busy Franklin Street to get to Barnett Hall.

The Associated Collegiate Press has judged the 1984 Echo as a five-star All-American yearbook, ACP's highest rating. The yearbook won marks of distinction in photography, art and graphics, copy, display, coverage and concept. The Echo is now a finalist for the Pacemaker Award, given by ACP to the three or four top yearbooks in the country.



Barnett Hall

Northeast has been selected as one of 23 universities to be included in a book on excellence in education. Dr. Kenneth Fulmer of George Mason University (Fairfax, Va.) is writing the book, which is patterned after 1983's bestseller, "In Search of Excellence." That book described what made business corporations excellent.

Fulmer visited the Northeast campus in November, and interviewed students, faculty and administrators. He said the value-added program and the "terrific amount of optimism" at NMSU were what impressed him the most. Fulmer said the book should be finished and printed by mid-1985.

Future business administration majors at NMSU will have to meet new requirements before taking upper-level classes and graduating. A proposal passed by Faculty Senate and signed by President Charles McClain in December says students must complete 60 hours credit hours with a 2.25 or better grade point average and a "C" or better in 12 core classes before they can take upper-level business administration courses.

Students must score in at least the 20th percentile on their senior test, complete six hours of credit in one foreign language, have an overall GPA of 2.25 or better and a "C" or better in all business administration classes before they can graduate. Business administration is presently the most popular major on the Northeast campus. The changes will take effect in fall 1985.

The St. Louis Construction Review commended NMSU architecture in its October 1984 issue. The president of the St. Louis chapter of the American Institute of Architects cited the Administration/Humanities Building, Barnett Hall and the Pershing Building for their outstanding design. The architects saluted the structures for their "continuity, collectivity and identity."

Friends of Richard Overfelt ('51), principal at Highcroft Ridge School in Chesterfield, Mo., have established a scholarship in his honor at NMSU. In his letter to Overfelt, President Charles McClain wrote, "The contributions of your friends represent a lasting tribute to you, as well as a gesture that will help some deserving student receive an excellent education at your alma mater."

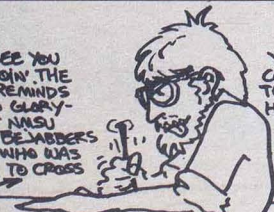
Overfelt received his master's degree from NMSU in 1955 and his doctorate from St. Louis University in 1971. He has been principal at Highcroft since 1977.

The NEMOSCOPE was honored recently by the Council for the Advancement and Support of Education (CASE).

The NEMOSCOPE won a Merit Award in the alumni newspaper/tabloid category at the CASE District VI Awards Competition, held in St. Louis.

Two articles from the Winter 1983 NEMOSCOPE (Vol. 37, No. 2) also won awards. "Teacher Bridges Two Cultures" by Joni Spencer won an Award of Excellence and "Forensics Rises From Debate's Ashes" by Greg Wright won a Merit Award.

DEAR WINSTON,  
IT'S GREAT TO SEE YOU BACK IN FORM DOWN THE OLD CARTOONS. REMINDS ME OF OUR OLD GLORY-FILLED DAYS AT NMSU ANNOYING THE BEAUBERS OUT OF ANYONE WHO WAS FOOLISH ENOUGH TO CROSS OUR PATH.



YEAH, THOSE WERE THE DAYS. COMPOSING CARTOONS AT THE TAP ROOM, GOING SQUIRREL HUNTING ON THE QUADRANGLE WITH SNOWBALLS, CHASING COMELY WENCHES, GUIDING THE MASKED ROOSTER IN HIS DEFENSE OF UGLY VIRGINS. GAD! WHAT FUN!

MY LIFE HAS CHANGED QUITE A BIT, TOO. I'M A SINGLE PARENT OF TWO... (KIDS, YOU DOLT!) I'VE MELLOWED, GROWN RESPONSIBLE YET NOT RICH. MY HAIR IS SHORT AND THE TIMES I DRINK MORE THAN TWO BEERS AT A TIME HAVE GROWN LONG APT. I GUESS WE ALL CHANGE WITH TIME.

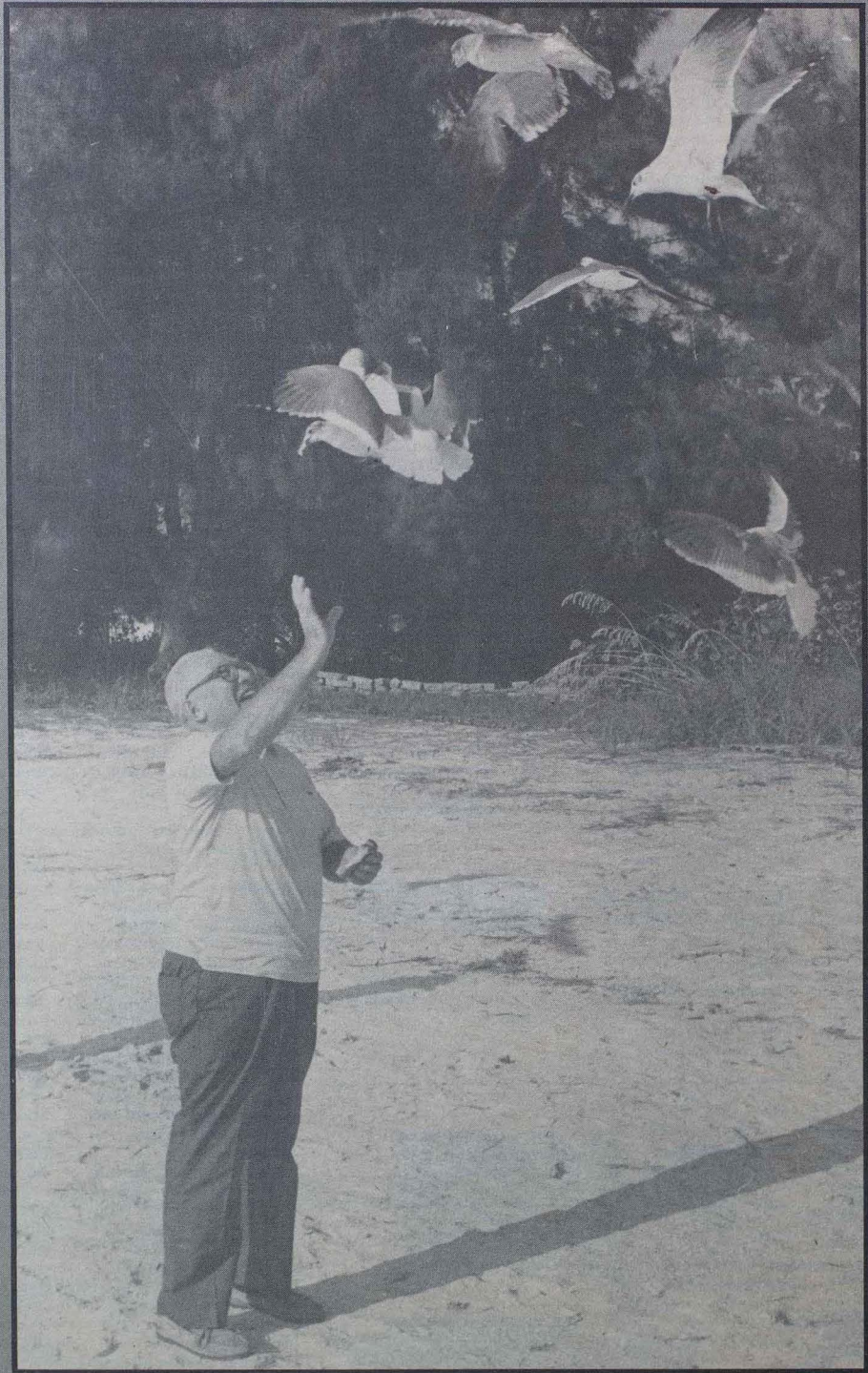


YEP, THERE'S REALLY NOT MUCH IN MY LIFE TO REMIND ME OF THOSE BYGONE DAYS AT GOOD OL' K-VILLE EXCEPT WHEN THE NEMOSCOPE ARRIVES TO JOG THE MEMORY BANKS...

AND I STILL GET HATE MAIL FROM THE SQUIRRELS. KEEP UP THE GOOD WORK.

YOUR PAL,  
Sloan

Jeff Ridgway ('79)



# “Don’t regret growing old, it is a privilege denied to many.”

By Tom Shrout

This thoughtful verse is the motto that Harold “Bud” Protiva (‘31) says he lives his life by. The verse is inscribed on a brass plaque, white from years of sea salt and enjoying a prominent place on Bud and Bunny’s back door at their Anna Maria, Fla., home.

The years at Kirksville seem distant now with the 80-degree Florida December weather bearing little resemblance to memories of going from work at the Owl Drug Store to football practice under

Don Faurot’s watchful eye on a chilling fall Kirksville day more than 50 years ago.

“But you know,” this cheerful man said, “We are all products of the people we come in contact with and there were so many fine people at KSTC that have influenced my life.”

Assuming a prominent place among those would be Don Faurot. Visitors to the Protiva home are quickly shown a 1977 edition of *Missouri Life* magazine which sports a front-cover portrait of Don. The eight-year-old magazine is close at hand in the Protiva living room, perhaps symbolizing the closeness that the two men have maintained through the last half-century.

After a successful career at Northeast as student-body president and quarterback for the Bulldogs, Protiva served a term as assistant coach under Don at Northeast in 1932, replacing Chauncey Simpson who had taken a leave to go to UCLA to work on an advanced degree.

Like so many of the men who played for the successful Faurot teams of the ‘20s and ‘30s, Protiva had little football experience prior to joining the Bulldogs.

“Willow Springs decided it was going to have a team so the coach loaded us all into the back of the pickup truck and we went to Springfield to see Drury play the Haskill Indians,” Bud recalled. “Soon after that we played our first game. Since I had played basketball, the coach made me the quarterback. All I remember is that the first time we got the ball, I punted on first down. It was the only thing I could think to do.”



Bud and Bunny Protiva

During those years, Don’s dad, who was running the state fruit experiment station at Mountain Grove, often scouted the opposing team or had his eye out for a promising high school player to bring to Don’s attention. Thus Don learned of Bud and soon began assembling a group of players that would include Bud’s future roommates, Fred Schwengel (‘31) and Trustin McArtor (‘30). Each had little football experience, but Don saw in them the character that was needed to succeed in life, and football was a way for them to get a college education.

“Fred and I worked as janitors for 50 cents a day. We were so poor that we would share a good pair of pants. Fred had two boards, we would put the pants between the boards and put the whole contraption under our mattress and sleep on it so our pants would be pressed,” Bud said.

The two have stayed in touch through the years. After Fred left his coaching job at Shelbina to come to the Kirksville public schools to coach, Bud took Fred’s place at Shelbina. He was there a couple of years and with success soon went to Hannibal and another successful coaching stint.

It was during a summer trip to Florida that Bud talked with Bunny’s uncle, A.C. Warren, who suggested that Bud might leave coaching in order to join Tampa-St. Petersburg Coca-Cola. Bud did not know if that was right for him until the secretary-treasurer of the company stopped Bud one day that summer and said: “I haven’t met many fools in my life, but you’re one of them if you don’t take A.C. Warren up on that offer.”

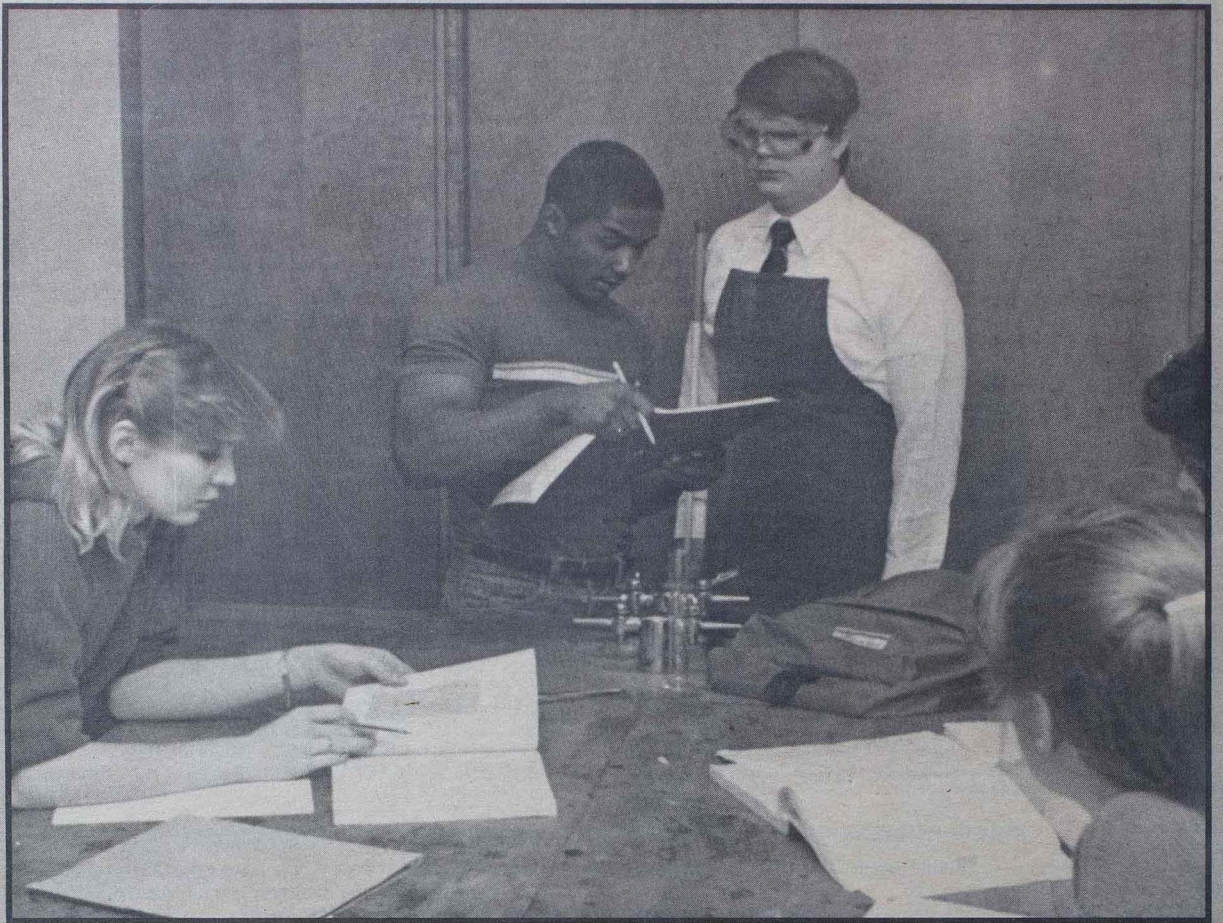
So Bud joined Coke, in Tampa-St. Pete, first working with the sub-plants and later working his way up through the ranks until among other things, he became the president of the Florida Bottlers Association. His position led to meetings in Washington with a young Iowa congressman, Fred Schwengel, about proposed taxes on bottled drinks.

Coke has been good to Bud, Bunny and the three girls. A buy-out and entry into other adventures have worked out. The two-day-a-week golf matches, tarmem fishing and entertaining the “snow birds” from the north, occupy much of his time now. Don and Mary Faurot manage frequent visits. Fred and Ethel Schwengel have been down to talk about Fred’s work at the U.S. Capitol Historical Society along with family and other friends who come to fish or lie in the sun.

“Friends are always welcome at my home,” Bud and Bunny said. Visitors are quickly given a tour of the island, the homes of celebrities who winter in Florida and whose children and grandchildren have adopted Bud and Bunny.

On the other hand, Bud and Bunny make visits to Missouri and Wisconsin to visit friends and family or to hunt deer and quail on occasion.

“I’m not that removed from Missouri,” Bud asserts, “After all, my niece married Missouri’s new state treasurer, Wendell Bailey, and I think got him a dozen votes from my friends!”



*“I can’t say I was always treated just like everybody else, because obviously, I’m not like everybody else. It would have been easy for a professor to say, ‘If you can’t perform this experiment, you’ll flunk this course.’”*

By Michelle Yost

One might think of a chemistry professor as a man wearing a long white lab coat and safety glasses, slowly pacing the lab checking that students have their tubes, vials, and flasks in the right order and observing the colors of the chemicals with which those students are working.

David Wohlers, assistant professor of chemistry, defies the stereotyped "mad scientist." Wohlers is blind.

Upon entering the office Wohlers shares with Roger Festa, assistant professor of chemistry education, one notices the differences between the two sides of the office. One side is cluttered with a variety of chemistry textbooks and journals and the walls are covered with bright posters. On the other side, Wohlers' desk is clear, except for several odd-looking machines, a poster or two on the wall, a bookcase containing a cassette holder and a few large books, and of course, pictures of Wohlers' son, Jacob, and his daughter, Jessica. But once one sits down with Wohlers and begins talking to him, the differences stop.

Wohlers received his bachelor's degrees in chemistry and mathematics from the University of Iowa (Iowa City) in 1975. As was his goal, he received his doctorate from Kansas State University (Manhattan) in the winter of 1982. Not only is Wohlers a first for NMSU in his first full-time teaching position, but he was a first in the chemistry program at Iowa and at Kansas State.

"I started out as an undergraduate thinking that I would choose a field to earn good money," Wohlers said. "I started in business and finance economics, but after I did poorly on my first economic exam, I changed my mind."

Wohlers said he took a chemistry course at the University of Iowa because he enjoyed that subject. Being the first blind student to take the course, Wohlers said, "We literally felt our way along."

Trouble with calculations and keeping up with the reading was the tough part of Wohlers' first semester of chemistry; however, a greater challenge, lab work, followed.

"After the first semester, we (Wohlers and his professors) had time to think about it, and I had a graduate student assist me in my lab," Wohlers said. "I really enjoyed chemistry and one of my lab professors said he thought I should go on to get my degree in chemistry."

Organic chemistry, one of the toughest parts of a chemistry major's curriculum, turned out to be one of the easiest for Wohlers who said he "set the curve" for the second semester of the course.

"Lab in organic chemistry was harder. I needed to get organized. Looking back, I didn't utilize my resources well—probably because of my independence," Wohler said.

Once into the chemistry curriculum, Wohlers knew he was "at home" in that major. Although Wohlers had difficulty at times, compensating for his handicap, he always found a way to work around being blind.

"If one method didn't work, you tried something else," Wohlers said.

Wohlers admits he was not an "A" student, and that he felt rewarded when he earned "Bs," but with very limited access to books and other text materials, he was at a definite disadvantage. Wohlers relied on his assistants and classmates to read to him. Usually, in one reading, he had to absorb and retain the information for tests.

"If it hadn't been for the support of a lab professor at Iowa (Clyde Frank) and the chemistry fraternity, Alpha Chi Sigma, I might not have stuck with it," Wohlers said. "There were always those on the faculty who doubted my effectiveness and my ability to find gainful employment, but I was determined to go to graduate school and my Ph.D. was my goal."

"I don't remember anyone ever saying to me straightaway, face-to-face, 'Dave, you can't do this,'" Wohlers said.

"I'm motivated by my interest. I have no other claim except my fondness for science. I'm not bringing any 'genius' to science," Wohlers said.

Motivation was what Wohlers needed when he started graduate school at Kansas State.

"Graduate school presented more serious challenges. You had to live up to the rules and expectations of the program. It took more 'stick-to-it-ness.'"

One wonders if Wohlers made his doctoral goal by receiving special treatment. Rest assured, he earned his degree.

"I can't say I was always treated just like everybody else, because obviously, I'm not like everybody else. It would have been easy for a professor to say, 'If you can't perform this experiment, you'll flunk this course.' But I was allowed a partner and professors compensated for me where necessary," Wohlers said.

Sometimes, no matter how much one wants something, a handicap blocks the way. Wohlers' love is research, something he has performed extensively in graduate school, while earning his doctorate and on his own since. Originally, he wanted to earn a living in industrial research but his blindness made this goal difficult. Wohlers said a major part of this field is keeping up on the latest literature and because of the process of getting that literature from the printed page to the spoken word was time-consuming, he didn't feel he could keep up.

"Teaching here is certainly going to fill a good part of what I want to do with my life," Wohlers said, "augmented by research, professional involvement and lab research."

Part of that research is Wohlers' effort to help other blind students find their way into the field of science.

"I persisted in my efforts to get my degree in chemistry. But some don't have the confidence," Wohlers said.

Now, he is working on creating an inexpensive, easy-to-implement program of lab experiments for the blind. Wohlers said with today's technology, "items for the rich are helpful to blind people" and such advances as microprocessors, lasers and sensors can be put to everyday use for the blind.

His interest in promoting and bringing others into the science field draws Wohlers into taking an active role beyond his teaching responsibilities. He is a resource person for the region for both the American Chemical Society (ACS) and the American Association for the Advancement of Science. Wohlers was also selected to serve on the Board Committee for the Handicapped for the ACS for 1984-86. This accomplishment makes him an active voice on the national level.

After talking with Wohlers, one wonders if he really is handicapped by his blindness. He accepts this genetic disease, Retinoblastoma, and lives a relatively normal life.

"What's scary for me is when there is so much noise and confusion around. That's an impossible situation for me," Wohlers said. "I depend on street dynamics to get me across a street and if there's a jackhammer going, for example, it's impossible for me to cross. You turn that noise on and I'm, well, I'm blind."

Wohlers said in this case, he depends on the people around him to provide a "safe" atmosphere for him. He said he won't even enter a noisy lab but if things around him are organized, he is safe.

Wohlers' genetic blindness used to be fatal by the age of three to the one out of every 18,000 live births affected by the disease. Retinoblastoma generates tumors on the retina of the eye. Now, the worst tumor can be targeted with lasers and cured. Wohlers had some vision until the age of eight when cataract surgery complications caused him to lose one eye and lose all sight in the other.

Wohlers and his wife, Debra, have a son also affected with the disease. But now, because of advanced technology unavailable to Wohlers when he was young, Jacob will have vision in his left eye with only a slight field of vision decrease.

Because the disease is genetic, the Wohlers adopted their second child. The final papers came through a week before Christmas. Jessica is a special child with some visual acuity loss and loss of hearing in the right ear; however, Wohlers said the hearing loss can be compensated for with a hearing aid.

Wohlers' family is a support and an incentive for him. Debra is often his hands and eyes, helping him with reading material and his duties as a teacher, such as grading tests.

Wohlers said the Science faculty at NMSU is also a great help. When he applied to the University, Wohlers explained to Dean Rosebery, division head, and the members of the Science faculty how he could teach. They, in turn, accepted Wohlers as a part of their team without skepticism.

"There isn't any magic about it," Wohlers said. "I'm a manager—I'm organized. If things aren't going right, I'll change it if I can. I'm willing to cover for my own mistakes and my students respect that."

# N E M O S C O P E

# NORTHEAST MISSOURI STATE UNIVERSITY

APPROVED  
NCACS

*Northeast Missouri State University, Kirksville, received a 10-year fully unqualified re-accreditation recommendation from the North Central Association of Colleges and Schools.*

By Michelle Yost

The accreditation team, comprised of educators and administrators from Illinois, Wisconsin, Indiana and Tennessee, reviewed the University for the Commission on Institutions of Higher Education of the North Central Association.

The evaluation team, which visits the campuses of several colleges and universities for accreditation purposes, recommended that NMSU be accredited for the next 10 years during which the University would not be required to submit periodic updates as to its progress on the improvement suggestions from the team. This fully unqualified status is very rare among the accredited institutions.

Northeast's pioneer Value-Added Program was listed by the evaluation team as the major asset of the University.

"This approach to the enhancement of student learning has served and continues to serve as a catalyst for general institutional improvement," the team's report stated.

The team went on to report the areas affected by Value Added were "the review and improvement of the general education curriculum; the review and revision of the sequences in the major; the exploration of ways to ensure the development of specified abilities (e.g., writing) across the curriculum, and the review by faculty and staff of the advising program to meet additional student needs resulting from increased academic demands within the university."

Other strengths listed by the evaluation team were faculty commitment, the rising quality of and concern by students, "vigorous, creative and committed" division heads, effective leadership on the part of the administration who takes a positive attitude toward the institution, financial support of faculty for continuing education and development, effective planning processes, internal and external evaluations and a well-maintained physical appearance of the campus.

The evaluation team voiced four concerns on which the University should work to improve, including an extension of the improvements on the undergraduate level to the graduate level, more regular involvement by faculty in research and scholarly activities, the need for basic on-campus counseling services for students and "As noted in the last North Central team report and reiterated in the institutional self-study and various administration/faculty recommendations, the library is seriously in need of space—a thorough renovation and expansion of the facilities."

The team's 44-page report covered several areas looked at for re-accreditation, including the University's institutional mission and purpose, the Value-Added Program, institutional organization and governance, faculty governance, financial resources, recruitment and admissions, student services advising, library facilities, curriculum, graduate education, research, planning, off-campus centers, physical plant and the team's listing of strengths and concerns.

In the curriculum portion of the study, the team took an in-depth look at each of NMSU's 13 academic divisions, summarizing the results of these studies in their report.

In the Business Division, the evaluation team noted the outstanding success of the graduates of accounting and business programs on the Certified Public Accounting examination. The report stated that Robert Dager, head of the Business Division, cited the strongest areas of emphasis with the business administration program as data processing and finance. The weakest emphasis areas were office administration, organizational communication and public administration.

Recently, the division upgraded its requirements in these emphasis areas, eliminating organizational communication and public administration from the curriculum due to low student enrollment and revising the office administration option.

The evaluation team reported favorably on the Education Division, stating that "Students attending NMSU in order to become teachers complete an unusually wide breadth of professional experiences prior to student teaching."

The team commented on the teacher education admission requirements, stating that NMSU's were more rigorous than those found in other institutions. The report outlined a future plan by the Education Division to implement a five-year teacher education program. This program would require a bachelor's degree liberal arts program, followed by one year of professional training focusing on instructional theory, research and practical experience.

In the Fine Arts Division, the team noted, "There is a great amount of enthusiasm within the division. There is a perception that the quality of the students is improving and that students are more serious. The faculty seemed genuinely pleased with the students. There was also a relatively high level of satisfaction with faculty peers and with faculty involvement in academic concerns."

The division expressed to the team the desire for more equipment, travel budgets and more participation in promotion and tenure matters.

In its report, the evaluation team recorded the planning process in the Health, Physical Education and Recreation Division. The division draws up an annual plan including goals for student numbers and the desired quality of students attracted to majors within the division. It also draws up a five-year plan.

The team reported the strengths within HPER as being high faculty morale, good relations with coaches, superior faculty/student relations and "a perception among faculty that they are allowed to assume roles which best correlate with their strengths and interests."

In the Home Economics Division, the team noted the enthusiasm of its head and somewhat young faculty. The team wrote that this enthusiasm has resulted in several program improvements, including those in the foods and nutrition program to meet American Dietetic Association criteria, the elimination of obsolete courses, freshman tests for science and mathematics placement and reading and writing tests for new students in the division's program.

In the Language and Literature Division, the team noted the mass communication major as the division's growth area and the continued strength of the English major. The team also reported the contribution of the English program to helping students meet rigorous requirements in their general education curriculum.

"Given the level of faculty cooperation, the progress in teaching and in designing writing and reading labs, and in the commitment to gathering and using data to improve the learning environment, the Language and Literature Division has the opportunity to provide direction and support to enable the faculty to continue to improve their curricular and assessment work," the report stated.

In the Mathematics Division, the team brought out the fact that its student majors "are talented, motivated and have the highest ACT scores on campus."

The team noted the new requirement in the general education curriculum that all students must complete a minimum of College Algebra as their mathematics requirement. The team recommended that with the growth of the computer science program, the division may need to hire additional faculty.

In the Military Science Division, the team summed up its opinion by stating, "The team believes the ROTC program is well conceived, taught by a competent faculty, and is appropriately academically rigorous. Grade inflation has been reduced significantly in this division. In addition, to classroom activities, there is a full schedule of field exercises, athletics and other out-of-class activity."

The evaluation team reported that the Nursing Division "has reached its maximum student growth and expends its energies in improving its educational programs and its faculty expertise through advanced degrees."

The faculty senate has approved a proposal by the division for a master of science in nursing degree with a rural nurse specialty. The proposal is being considered now at the state level.

The team noted a priority in the Practical Arts Division to help keep faculty current on the constantly changing technology involved in its area.

Despite the Coordination Board for Higher Education's recommendation to eliminate NMSU's agriculture program, the division and the Board of Regents believe the program is a vital part of the University which should be maintained.

The team reported that "Because of the lack of nationally normed examinations in the industrial technology area, the division uses locally constructed assessment tools for senior exams in this area. The NTE exam is used in the industrial education program."

In the Science Division, the team noted the current renovation of laboratory and research facilities in Science Hall. The team also reported the evidence of the Value-Added Program in the division, writing that "Test results from the "value-added" evaluation system have spurred curriculum experimentation; in particular, a combined botany/zoology introductory course has been developed. This course is presently being compared to the more traditional separate courses in terms of student achievement."

In the Social Science Division, the team noted that "In addition to improving their enrollment by working with the admissions department on recruitment faculty expend a great proportion of their energy on the improvement of student performance with the expectation that such results will also contribute to recruitment and retention."

The division places an emphasis on the analysis of student test scores and student and alumni survey data for program improvements.



Commission II members Fritz Lauer and Bill North discuss the Commission's recommendations with University President Charles McClain.

## Commission II Sets University Goals

The members of Commission II finished their work Feb. 16 by adopting 87 recommendations for the future of Northeast Missouri State University. The board of Regents adopted the recommendations the same day.

Commission II: The Second Commission on Institutional Goals and Priorities 1985-89 began meeting last April. About 100 people served on the Commission, including Board members, University faculty, staff, alumni and students. Elected state officials and business leaders also served on the Commission.

Commission II is the second of its kind. Commission I met in 1972 and issued its final report in 1973.

The Commission's report is expected to guide the University for the next decade or longer. Among other recommendations, the group encouraged the University to extend its Value-Added assessment program to the graduate level, ensure strong enrollments of high-ability students, increase private fund-raising efforts and monitor funding and facilities to make sure they are adequate.

The Commission also recommended "the general education program be modified where necessary, by division, to achieve the objectives of liberal learning."

Norman Auburn, vice president of the Academy for Educational Development, served as the consultant to the Commission. Auburn commended the group for its work, saying the report comes at an opportune time.

"Two national studies have come out in recent weeks, critical of higher education" Auburn said. "But this report shows that your graduates have the skills that will help them be productive members of society."

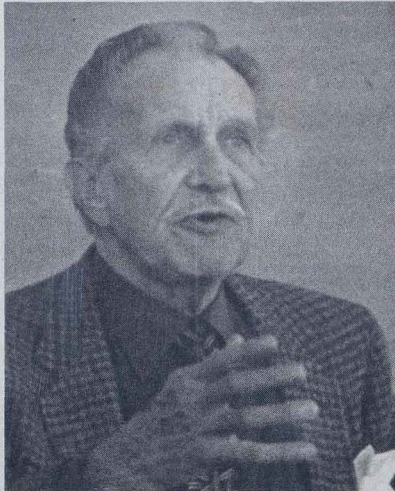
"Few universities have taken on the enormous responsibility of planning their role in a changing society. You are to be congratulated for taking the initiative to plan your destiny," Auburn said.

President Charles McClain told the Commission members, "I am pleased to report that much change is occurring at this University. It is my best estimate that we are going to come out of this era as an even stronger university. This is another historic day in the life of your school. You have been a vital part of it."

The Commission was divided into six task forces, each of which came up with several specific recommendations in its area. The six task forces covered academic programs and enrollment projections, finance and budget, faculty welfare, physical facilities, institutional support services and development and fund raising.

# alumni/development

## Vincent Price rises again in 1985.



The weekend of Oct. 25-26 has been selected as the dates for Homecoming 1985. This annual fall festival will center around the gridiron contest, pitting Central Missouri State University against the Bulldogs.

As in recent years, this Homecoming will be highlighted by anniversary class reunions. The honored include graduates from 1935, 1945, 1960, and 1975.

Homecoming activities will also include the presence of Vincent L. Price Jr. The internationally-known entertainer is scheduled to perform Saturday evening in Baldwin Auditorium. According to Ed Carpenter, Language and Literature Division head, Price's presentation will focus on the traditions and myths surrounding Halloween. While on campus, Price will attend the Kirk Society Reception and Banquet and serve as the parade marshal.

The Alumni Office, Student Activities and Student Senate are presently working toward a theme and finalizing the schedule of events for Homecoming 1985. Programs and reservation forms should arrive at the doorsteps of alumni in August.

## Corporation established to receive gifts

Fund raising continues at NMSU, but under a new name.

Northeast Missouri State University has established a separate corporation to act as a receiving agent for gifts to the University. The Secretary of State has officially recognized the NMSU Development Fund Corporation as a general not-for-profit corporation.

As listed in the Articles of Incorporation, the purpose of the organization is, "...to promote the welfare of Northeast Missouri State University." Specifically, it will provide the flexibility to maximize the University's fund-raising efforts while not being unnecessarily constrained by state regulations—rules established to monitor state dollars, not private gifts.

Prior to the establishment of the corporation, NMSU was required to invest all funds in certificates of deposit. Though Northeast investment policies will remain conservative, avenues for greater investment income will be pursued. The state also controls the sale of gifts other than cash and securities. The selling of real estate, livestock, equipment, etc. will now be handled through the corporation.

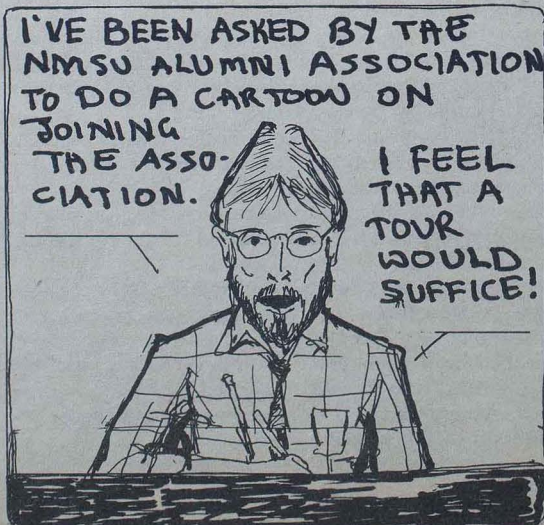
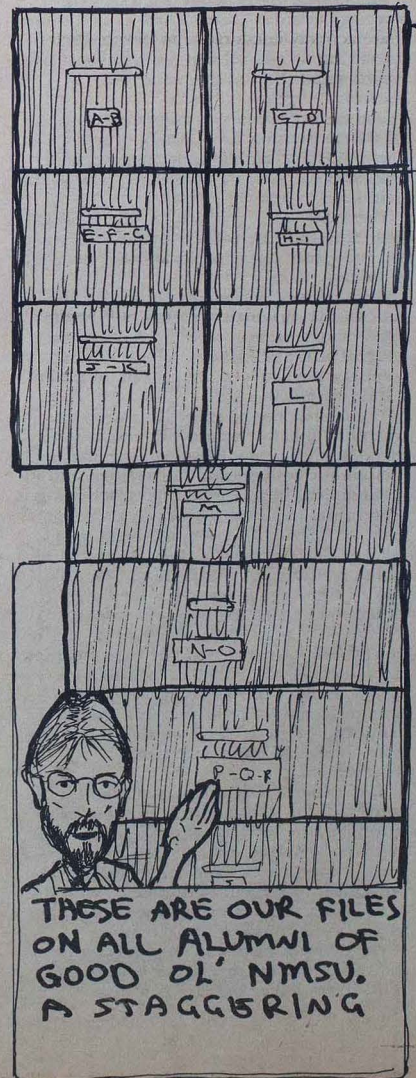
The NMSU Development Fund Corporation will be governed by a seven-member board of directors composed of the six voting members of the Board of Regents and the President. According to Ray Klingensmith, NMSU general counsel, duplication of the governing bodies of the Corporation and the University will provide for simplicity and

ensure the direction of the organization remains consistent with the University's mission and goals.

In addition to the Board, the Business Office will also perform the dual role of recording and managing the Development Fund transactions.

All NMSU endowment assets have been transferred to the Corporation. Funds from the Alumni Association have also been relocated within the new organization, but will be handled as a separate subsidiary.

Bernice Humphrey Clark ('26) recently donated funds to NMSU for music scholarships. Clark received her bachelor's degree in music education. She taught music in area schools for several years. Clark is now retired and living in Kirksville.



THESE ARE OUR FILES ON ALL ALUMNI OF GOOD OL' NMSU. A STAGGERING

# Book, report, certificate salute Northeast

By Greg Wright

Northeast's Value-Added Program received a number of citations in the past few months, including a book publication and recognition from a national group and a state organization.

The American Association of State Colleges and Universities published a book about the program in November. "In Pursuit of Degrees with Integrity" details NMSU's value-added approach to undergraduate assessment. The publication is in conjunction with the Mitau Award, given to the University by AASCU in 1983 for excellence and innovation in education.

The book features a preface by Alexander Astin, the president of the Higher Education Research Institute at the University of California-Los Angeles. Astin spoke about the Value-Added Program during a visit to Northeast in 1983.

In the book's preface, Astin says, "What is particularly appealing about the Value-Added Program at Northeast Missouri State is that it has been implemented across-the-board. All participants in the academic community—faculty, students, administrators and staff—are actively encouraged to devote their individual and collective efforts to this common task."

In his prologue to the book, President Charles McClain says, "I hope the story told in the pages of this book will be of value to other institutions of higher learning. Through the sharing of experiences, a new level of excellence in higher education can be reached."

"In Pursuit of Degrees with Integrity" includes chapters explaining the Value-Added Program, its planning, implementation and operation and the future of the program. AASCU has originally printed 500 hardback copies of the book and 5,000 paperbacks. Paperback copies can be ordered from AASCU Publications at One Dupont Circle, Suite 700, Washington, D.C. 20036, for \$8.95.

Northeast was prominently mentioned in October comments from the American Council on Education. ACE is the umbrella organization for colleges and universities, and in responding to a Department of Education report on liberal arts education, it cited NMSU.

"One case in point is a core curriculum developed at Northeast Missouri State University. The program measures changes in each student's intellectual and personal development and the strength of each student vis-a-vis other students in the country," the report said. Northeast and Alverno College (Milwaukee, Wis.) were cited as examples of a return to liberal arts education.

NMSU also received the Academy of Missouri Squires' Certificate of Merit in Education during November. The group recognized Northeast for "continual innovative efforts, accountability and concentrated effort to improve its academic standards, upgrade admission requirements and strengthen curricular and advisement program."

The award marked the first time this citation was presented to an institution of higher education in the 24-year history of the Squires.

The academy was founded in 1960 by Gov. James T. Blair Jr. to honor Missourians for their accomplishments at all levels, local, statewide or national. It consists of 95 to 100 members, including the present governor and all living past governors.

The other three awards for excellence in education went to the Blue Springs School District, Camdenton School District and to William Jewell College (Liberty).

## IN PURSUIT OF DEGREES WITH INTEGRITY: A VALUE-ADDED APPROACH TO UNDERGRADUATE ASSESSMENT

Prepared by Northeast Missouri State University.

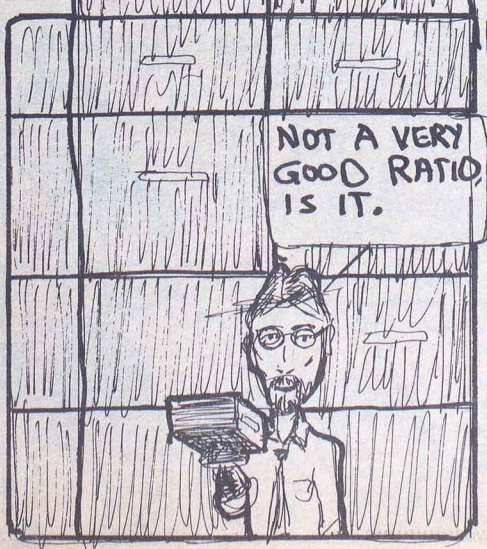
Published by American Association of State Colleges and Universities.

How well do colleges and universities educate students? Can campuses measure their effectiveness? The value-added approach to excellence in higher education—an assessment method pioneered by Northeast Missouri State University—measures the effectiveness of learning by testing entering freshmen, sophomores, and seniors to gauge students' progress. The value-added concept measures achievements in math, English, social and natural sciences. Seniors are tested, prior to graduation, to evaluate academic accomplishments in their major fields.

*In Pursuit of Degrees with Integrity: A Value-Added Approach to Undergraduate Assessment* is available from AASCU Publications, Suite 700, One Dupont Circle, Washington, DC 20036-1193; \$6.50 members/\$8.95 nonmembers prepaid per copy, includes postage and handling.

Please send me \_\_\_\_\_ copies of *In Pursuit of Degrees with Integrity: A value-Added Approach to Undergraduate Assessment* at \$8.95 prepaid.

Name: \_\_\_\_\_  
Address: \_\_\_\_\_  
City: \_\_\_\_\_  
State/Zip: \_\_\_\_\_



## in memory

**Charles Gross**, professor emeritus of chemistry, died Feb. 19, 1984 of a heart attack. Gross had taught for 10 years at the University, from 1961 to 1971. He was 79.

Gross and his wife, Thyra, had recently moved back to Missouri from Columbus, Ohio. They lived in Ballwin, near their daughter, Jane, son-in-law, Walter Bauer, and two grandchildren, Katie and C. W. Mrs. Gross now lives in Columbus.

Gross earned his bachelor's degree at Ohio State University (Columbus) in 1927. He later earned his master's and doctorate degrees at Northwestern University (Chicago) in 1929 and 1931.

Gross was a member of several professional societies, including Phi Lambda Upsilon chemistry honorary fraternity, Sigma Xi science honorary fraternity, the American Chemical Society and the American Oil Chemists Society.

Gross began work at NMSU after retiring as director of research for Morrell Meat Packing Company in Ottumwa, Iowa. He was originally appointed as a temporary organic chemistry instructor.

**Dr. Richard Keith**, a well-known Kirksville veterinarian, died unexpectedly following an aneurysm Dec. 30, 1984. He was 62. Keith has served the University as director of animal health technology for the past 10 years.

Keith graduated from Kansas State University (Manhattan) in 1944 with his doctor of veterinary medicine degree. He moved to Kirksville in 1949, where he set up a general veterinary practice. He built the Adair County Animal Hospital, and operated it until 1975, when he sold the hospital to the University. At that time, Keith became director of animal health technology at NMSU, a position he was holding at the time of his death.

Keith was a member of several professional groups. He was a member and past-president of the Missouri Veterinary Medical Association and was honored by that organization in 1976 as the Veterinarian of the Year. He also was active in the American Veterinary Medical Association, having served on that organization's executive board.

Keith was also quite active in the community. He served for 13 years on the Kirksville School Board and held the offices of president, vice president and treasurer. He sat on the board of the Community Nursing Home. He was chairman of the Kirksville-Adair County Bicentennial Committee. He was a member and past-president of both the Adair County Historical Society and the Kirksville Kiwanis Club, and was named Kiwanian of the Year in 1975. He also served as an elder at the First Presbyterian Church.

Keith is survived by his wife of 38 years, Stephanie, and his five children. They are Richard S. Keith of St. Charles, Mo., Mrs. Terry (Janet) Hawkins ('70) of Kirksville, Mrs. Bruce (Teresa) McKinney of Houston,

Mrs. Gary (Mary) Elam ('80) of St. Louis and Mrs. Bryan (Bonnie) Collier of Kirksville. Also surviving are Keith's mother, one brother, one sister and six grandchildren.

University alumni and other friends of Keith have set up the Dr. Richard Keith Memorial Scholarship Fund. The scholarship will be awarded to an outstanding second-year student in the animal health technology program. Contributions may be sent to the Dr. Richard Keith Memorial Scholarship Fund in care of the NMSU Development Fund, 202 A/H Building.

**James W. Krink** of Kirksville died Feb. 4 in the University of Missouri Medical Center in Columbia, Mo. Krink, 63, had been in failing health for several months.

Krink was a retired farmer and an avid softball fan. In late 1982, he donated \$3,500 to the University to rebuild a field for NMSU's women's softball team. The donation paid for about half of the materials needed for the reconstruction of the field, particularly the fence, and the University picked up the rest of the cost plus labor. The new field is located behind Stokes Stadium on Florence Street.

Work on the field was completed by spring 1983, and the women's team has been using it since. The field is also used for intramural softball games.

Krink is survived by his wife, Evelyn; and three daughters, Michele Krink Nacke ('73) of Bowling Green, Mo., Tamara Krink Machlan ('76) of Omaha, Neb., and Melisse Jo Krink of Kirksville, a junior at the University.

## new members

### HONORARY LIFE MEMBERS

*Honorary life memberships in the Alumni Association are given in appreciation of one-time gifts of \$1,000 or more to the University.*

Mrs. Bernice Humphrey Clark, Kirksville, '26  
Dr. Lydia Inman, Ames, Iowa  
Harold (Bud) Protiva, Anna Maria, Fla., '31

### NEW LIFE MEMBERS

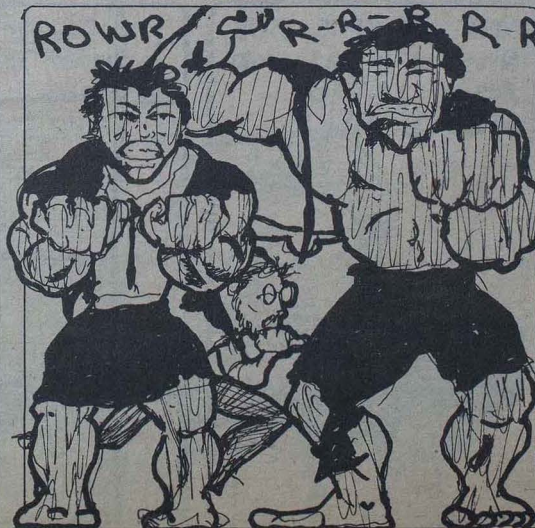
Scott Billings, Tulsa, Okla., '84  
Mrs. Patricia Blackaby Carrington, Columbia, Mo., '80

Miss Kathryn A. Cerveny, Canton, Mo., '84  
William A. Cox, Sand Springs, Okla., '81  
Clyde S. Forbes, Michigan City, Ind., '64  
Mrs. Sandra Forbes, Michigan City, Ind.  
Terry W. Gravemann, St. Charles, Mo., '72  
Mrs. Ellen Wentz Hannon, APO New York, '78  
Cpt. Richard J. Hannon, APO New York, '78  
Tony Lema, St. Louis, '50  
Miss Gayla E. McCurren, St. Charles, Mo., '76  
Miss Mary S. McFarland, New Llano, La., '84  
Miss Kathryn C. Meyer, Oskaloosa, Iowa, '83  
Mrs. Debra Diedrich Moss, Lakeland, Fla., '77  
Edward M. Norman, Kansas City, Mo., '83

Mrs. Arleen Imamura Santos, Honolulu, '63  
Michael L. Timmer, St. Louis, '84  
Mrs. Michelle Moss Timmer, St. Louis, '84  
Dan R. Tipton, Haslett, Mich., '78  
Mrs. Mary Anne Kalec Winterhoff, Westhaven, Ill., '84  
Jeffrey B. Wright, Perry, Mo., '84  
Mrs. Virginia Boren Wright, Perry, Mo., '83  
Mrs. Jan Parker Zajac, Kirkwood, Mo., '83  
Scott Zajac, Kirkwood, Mo.

### NEW ANNUAL MEMBERS

Lt. Andrew A. Altizer, Hinesville, Ga., '84  
Mrs. Opalee Hinton Barnard, Rochester, N.Y., '27  
Mrs. Mildred Brenner Bell, St. Louis, '38  
Mrs. Janet Rowe Brammer, Quincy, Ill.  
L. Duane Brammer, Quincy, Ill., '68  
David E. Current, Warrenton, Mo., '71



- Mrs. Deborah Fouch Current, Warrenton, Mo., '76
- Dr. Terry Early, Kirkwood, Mo., '77
- Dr. Garrett (Gary) Elam, St. Louis, '79
- Mrs. Mary Keith Elam, St. Louis, '80
- Mrs. Mary Off Johnson Elmlinger, Sarasota, Fla., '51
- Michael W. Farrington, Orlando, Fla., '79
- Ms. Victoria Morris Gifford, Sarasota, Fla., '75
- C. Michael Greenwell, Dayton, Ohio, '83
- Mrs. Marcia Love Greenwell, Dayton, Ohio, '83
- Mrs. Marilyn Davis Hannah, Truro, Iowa, '70
- Mrs. Hazel Lee Kuhn Hartford, Lake St. Louis, Mo., '37
- W. Edwin Hartford, Lake St. Louis, Mo., '38
- Mrs. Valley W. Henebry, Troy, Mo., '51
- Donald A. Heneghan, La Grange, Ill., '77
- Mrs. Crystal Carlson Hicks, APO New York, '81
- Wayne E. Hicks, APO New York, '78
- Mrs. Ruth Selby Kielczewski, Wood Dale, Ill., '81
- Miss Teresa E. Lock, Robstown, Texas, '83
- Miss Pamela K. McDaniel, Dallas, '83
- Anthony M. Margiotta, St. Louis, '73
- David F. Meyer, Maplewood, Mo., '64
- Mrs. Dena Maxine Miller, Birmingham, Iowa, '70
- Carroll R. Mitchell, Tipton, Iowa, '71
- C. Russ Phillips, Fremont, Iowa, '79
- Glendle Pickering, Collinsville, Ill., '55
- David A. Priest, Hannibal, Mo.
- Mrs. Debra Fortenberry Priest, Hannibal, Mo., '80
- Mrs. Laura E. Rauh, Perry, Mo., '62
- Mrs. Dawn Way Sandheinrich, St. Louis
- Michael R. Sandheinrich, St. Louis, '78
- Mrs. Cheryl Harrison Schreiber, Lincoln, Neb., '77
- Meldon J. Stubbs, Liberty, Mo., '74
- Mrs. Patricia Oberman Stubbs, Liberty, Mo., '73
- Miss Cynthia R. Thompson, Maryland Heights, Mo., '84
- R. Scott Troester, Overland Park, Kan., '82
- Kenneth G. Wells, Florissant, Mo., '69
- Cpt. Thomas J. Williams, San Antonio, Texas, '80
- Mrs. Ida Schnick Witthaus, Wright City, Mo., '56
- Miss Terry A. Young, Nevada, Iowa, '83

# "Yes, Virginia, there really is an Alumni Association!"

NMSU's Alumni Office periodically receives letters from alumni asking about the benefits of joining the Alumni Association. Alumni ask what the Association is, how one joins and what the Association does.

Though the Association's primary purpose is not academic in nature, its existence is vital to the institution. The Alumni Association and its nearly 3,000 members have established and maintained an important, open line of communication between NMSU and 28,000 living alumni, former students and friends.

The Alumni Association at Northeast has three major functions: publishing the alumni magazine, *NEMOSCOPE*; planning and coordinating events for alumni returning to Kirksville during Homecoming; and planning and hosting alumni receptions in different cities around the country.

The Association provides funding for the *NEMOSCOPE* and mails it to all Association members quarterly. The magazine features extensive alumni notes, which allows readers to keep informed about developments in former classmates' lives. *NEMOSCOPE* also spotlights especially successful alumni and important campus developments in academic divisions, athletics, student organizations and the Value-Added Program, to name just a few areas.

Homecoming is a big event every fall for both students and alumni. The Association assists in the planning and promotion of this special weekend, which includes a reception for all alumni and special reunions for the honored classes, those that graduated 10, 25, 40, and 50 years earlier.

The Association also hosts alumni receptions in cities across the country. The receptions are designed for alumni who are not able to return to Kirksville. In the past few years alumni gatherings have been held in such cities as St. Louis; Kansas City, Mo.; Chicago; Des Moines, Iowa; Akron, Ohio; Tampa, Fla., and San Diego. Past receptions have often been held in conjunction with Northeast athletic contests, state teachers' conventions or college recruitment nights.

However, local organizers who can get firm commitments from 50 alumni in an area should call the Alumni Office to see if an alumni reception can be arranged.

In addition to the previously listed benefits, the Association offers its members discounts on many campus activities, especially during Homecoming, and price breaks on Alumni Travel Tours.

Any Northeast graduate, former student or friend can join the Alumni Association. An outline of the membership structure and an application are included.

We invite you to fill out the application and become a vital part of NMSU. If you have any questions, or suggestions, please contact us at the Alumni Office, 202 A/H, Northeast Missouri State University, Kirksville, MO 63501; or call (816) 785-4124.

## Become an important part of NMSU

I wish to become a member of the Northeast Missouri State University Alumni Association. Membership in the Association includes receiving the *NEMOSCOPE* and other publications.

Name \_\_\_\_\_

Street Address \_\_\_\_\_

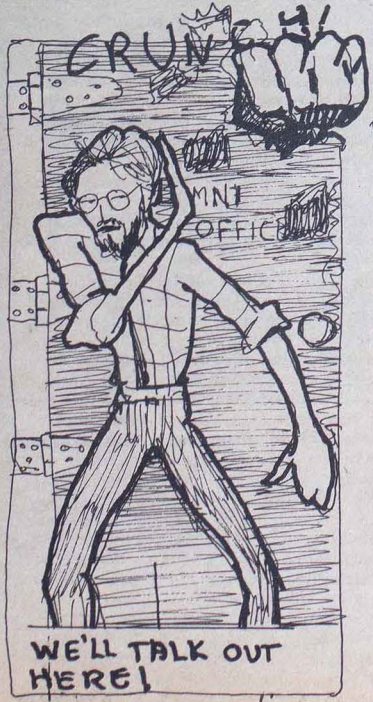
City \_\_\_\_\_ State \_\_\_\_\_ ZIP \_\_\_\_\_

Year of graduation \_\_\_\_\_ If not a graduate, years of attendance \_\_\_\_\_

- SINGLE ANNUAL ..... \$10
- JOINT ANNUAL (husbands and wives only) ..... \$13
- LIFE (payable over a three-year period at \$35 per year) ..... \$100
- JOINT LIFE (payable over a three-year period at \$45 per year) ..... \$125
- GRADUATING SENIOR LIFE
- (must be taken out in year of graduation) ..... \$50
- GRADUATING SENIOR JOINT LIFE
- (must be taken out in year of graduation) ..... \$60
- OVER 65 ANNUAL (single or joint) ..... \$5

Join the Alumni Association. Mail membership form and enclosed check to:

**Alumni Association**  
112 A/H  
Northeast Missouri State University  
Kirksville, Missouri 63501



AS YOU CAN SEE, THEY BECOME A LITTLE IRATE WHEN THERE IS AN IMBALANCE IN ALUMNI RECORDS AND ALUMNI WHO HAVE JOINED THE ASSOCIATION. SO, HOW ABOUT FILLING OUT THIS APPLICATION AND SENDING IT IN. REMEMBER, WE KNOW WHERE YOU LIVE, AND DAVE, HELEN AND I COULD COME VISIT!



*Handwritten signature and date: [Signature] '85*

## "A lot of people don't look at the past and how that can help you in the future."

The telephone rings just as Lee Ann Howard and I sit down for her interview. There is a crisis at one of the other Peabody "campuses"—a minor one—but nonetheless, one that requires the attention of Peabody Coal's management specialist.

Such interruptions are a regular feature of Lee Ann's job with Peabody Coal Co. of St. Louis. She makes frequent trips from one campus (Peabody is spread out in six different buildings in downtown St. Louis, each one called a "campus") to another throughout a normal working day.

One might think that after a day like that, Lee Ann would drive home to nearby Clayton, Mo., kick back and watch television all evening. But if she did, Lee Ann would not be one of the 1984 Ten Outstanding Young Women of America.

"It would be a lot easier for me to go home at night and watch TV," Lee Ann said, "but I need to stretch and grow. I like myself better when I'm involved."

"Involvement" can't quite describe Lee Ann's lifestyle, but what she does with her time won Lee Ann a place among ten outstanding women nationwide.

Nominated by Carol Keller ('78), Lee Ann was chosen to represent Missouri in the national competition.

Annually, the Outstanding Young Women of America Program honors women between the ages of 21 and 36 for civic and professional achievements. The program received more than 98,000 nominations this year from which Lee Ann and nine other young women were chosen by eight men and women on the award's judging panel.

This year's panel included executives from the Women's National Bank, the Office of the Secretary of Defense for Military Personnel and Force Management, the Federation of Organizations for Professional Women, Chemical Manufacturers Association, Meridian House International, the National 4-H Council, the Congressional Caucus for Women's Issues and Taylor Associates Inc., a financial planning and investment firm.

Lee Ann said her involvement in the past and present helped her get to where she is today. While a mass communication major at NMSU, Lee Ann was editor and chapter improvement director in Alpha Sigma Alpha social sorority, a KNEU campus radio station disc jockey, a member of the Student Activities Board, Student Ambassadors, College Ushers, the German Club, Mass Communication Club, varsity track and cross-country teams and a charter member of the Society of Professional Journalists/Sigma Delta Chi. Lee Ann was Student Senate secretary during her senior year, an organizer of the Student Participation Party and chairman and student member of the President's Energy Conservation Advisory Committee.

After graduation in spring 1979, Lee Ann was a news announcer and public affairs director for KHMO Radio in Hannibal, Mo. While in Hannibal, Lee Ann was involved in several community organizations.



Currently, Lee Ann is a member of the Missouri Association of Personnel Consultants, Toastmasters Club, Women in Leadership Alumni, the American Society of Training and Development and the Junior League of St. Louis. In conjunction with her job at Peabody, Lee Ann is involved in Junior Achievement and the United Way Campaign.

Lee Ann's involvement has gained her other honors and recognition, including Sigma Tau Gamma's White Rose Queen Attendant and runner-up in the Outstanding Greek woman competition while at NMSU. The Missouri Broadcasters Association presented KHMO first-place awards in public affairs and news programming. She was the Business and Professional Women's Club Young Careerist for her chapter as well as her district. Kendall and Davis Company (a former employer) named her to its President's Club. She was selected by Midwest Coro Foundation and the Junior League of St. Louis to participate in the Women in Leadership Program, and in a recent Toastmasters' contest, Lee Ann took first place on the local level and co-winner at the area level in the Table Topics category.

One might ask where Lee Ann finds enough hours in the day or if she really works or just hangs around waiting for laurels. But spending just a few hours with her proves her dedication to a time-consuming job.

Her title is "management specialist." What is a management specialist? Lee Ann's job description says her primary concern is "with identifying the developmental needs of the organization then planning, developing and implementing programs and activities to satisfy these needs."

To those she helps, Lee Ann is a teacher of employee betterment and growth courses, consultant and counselor for Peabody Coal employees, a training consultant for Peabody Management and an analyst for the entire company in matters involving business problems in training.

## "I don't like to regret anything I did—just make up for it."

by Michelle Yost

"I teach classes about 20 percent of the time. I have classes in corporate grammar, writing, listening skills, time management, speedreading, and meeting management. The rest of the time is divided up for interviewing for research and design of new programs and updating current curriculums," Lee Ann said.

Her time is also devoted to recruiting for classes, basic public relations, internal marketing and keeping the "channels of communication open from the mines to top administration. I always have to be available to the employees when they need me," Lee Ann said.

Even though Lee Ann works in a newly-constructed office building, she keeps in contact with all working levels of Peabody Coal, visiting one of Peabody's 39 operating mines every month. Why would this young executive descend into the mines periodically?

"You need to know your product to relate to the needs of the corporation. Visiting the mines is the best way to learn about coal," Lee Ann said. "It (visits) lets them (miners) know I am available, accessible and that I care."

Peabody Coal is the largest coal company in the United States and Lee Ann, along with Peabody's other management specialist, is accessible to 3,740 non-represented division and corporate personnel.

Lee Ann believes the time dedicated to her job and outside activities and the personal satisfaction she gets from doing things will offset each other.

"In voluntary commitment, like in your job, you must give 110 percent," Lee Ann said. "I think that if you're going to be involved, be involved."

Lee Ann said her success is a result of family support, positive role models, her education and work experience. Among her role models are Tom Draper, Jack Dvorak and Al Edyvean, all former professors at NMSU, and Jack Magruder, professor of science.

While involved at NMSU with the President's Energy Advisory Committee, Lee Ann received a letter from University President Charles McClain, congratulating her on a job well done.

"President McClain's letter was a challenge for me to strive for success," she said. "When someone you respect is behind you, it gives you confidence."

Lee Ann admits she wasn't a straight-"A" student in college, but said a lot of education isn't in the book, but out of it, and that what you retain from your classes is more important than their measure. One thing Lee Ann doesn't do is look back with regret. In her position at Peabody, she uses a fair amount of business and finance, which she is learning on the job. Although if she had it to do all over, knowing what she does now, she might take a class or two in that area, she is challenged by having to learn and use such knowledge now.

"A lot of people don't look at the past and how that can help you in the future," Lee Ann said. "I don't like to regret anything I did—just make up for it."

# Alumni Association Scrapbook

## 1984 Receptions

Photos by Tom Shroust and Winston Vanderhoof



HOPE AND LOU LORCH; BEVERLY AND HENRY REED ('50); TONY LEMA ('50) AND MARY LOU LEMA - ST. LOUIS



DR. DAGER, BUSINESS DIVISION HEAD, AND JIM TEMME ('79) - ST. LOUIS. POOR PHOTO!



PHILLIP WILSON ('69) AND SUSAN KOCH WILSON ('71)



3 GENERATIONS OF NMSU GRADS - SUZANNE GREENE SHETTLE ('62), PHILIP LEE SHETTLE ('84) AND ELAINE FEELY GREEN ('59)

NEXT YEAR -  
NEW CAMERA!

TRY  
to CLEAN  
UP

# THE TEACHERS COL

Northeast Missouri State Teachers College

VOLUME X

KIRKSVILLE, MISSOURI

*"It was a 'midnight marathon,'"*

During its 76 years, Northeast Missouri State University's campus newspaper, the *Index*, has undergone many changes. It has, however, continued to be an award-winning college newspaper and a valuable learning experience for those who worked on its staff.

The first issue of the campus newspaper was published March 19, 1909, as *The Kirksville Normal School Index*. The paper has gone by a number of names since then, but has continued to be called the *Index* by students regardless of the official title.

Many former editors say their *Index* experiences helped their careers. "It made me able to write quickly," Carol Speck Schmidt ('73), the 1971-72 *Index* editor, said. "I used about every skill at the *Index* that any newspaper person has to rely on."

Walter McCormick ('61) was the *Index* editor in 1959. "I went into public speaking. I did all my own publicity, and my writing produced results. By and large, my stories got into the paper unedited," he said.

While the *Index*'s name, format, content, production and location have all changed over the years, two things have remained constant. The paper consistently wins national recognition, and students have to put in long hours to produce a quality paper.

"I remember long, long hours," Schmidt said. "It went all night frequently. There was a lot of dedication there."

"It was a 'midnight marathon,'" 1977-78 Editor Carol Keller ('78) said. "We'd stay up all night 'putting the paper to bed.'"

Keller, too, learned from her editorship. "I became very familiar with layout, headlines, and Associated Press style. But mostly, it helped me organize my time and manage it," she said.

The editors look back on their staffs and offices as families and homes. "I remember working with some pretty good people," McCormick said. "I especially remember our adviser, Agnes Slemons. She was a tremendous individual."

"We had a great group. The people were associated with the paper," Keller said. "They were hard-working, but still knew how to have fun. I liked to go to the *Index* office even when I wasn't working on it."

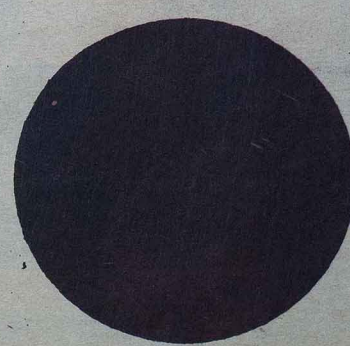
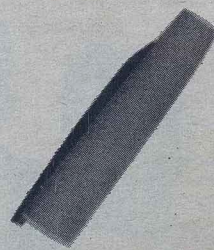
The *Index* offices are now located on the third floor of Laughlin Hall and new typesetting equipment allows the staff to do all of the production and layout of the paper.

Last year was the 75th anniversary of the campus newspaper, and 1983-84 Editor Jodi Carlson wishes she could have done more in recognition.

*"I used about every skill at the Index that any newspaper person has to rely on."*

RULES  
& PHOTO  
HOURS!

The first issue of the campus newspaper was published March 19, 1909, as *The Kirksville Normal School Index*. The paper has gone by a number of names since then, but has continued to be called the *Index* by students regardless of the official title.



KON-INDO

# LEGE INDEX

Freshmen!!! Be sure to get your tickets for the picture shows Friday night at 6:15.—10c.

Y. SEPTEMBER 6, 1938.

NUMBER 17

"We did a feature in our last issue highlighting *Indexes* from the 75 years," Carlson said. "But I wish that I had recognized the anniversary throughout the publishing year, perhaps by adding something to the nameplate to commemorate the anniversary."

Carlson summed up the editors' thoughts, saying the decisions and responsibilities of being editor had prepared her for life after college.

"I'm constantly being told that my days at the *Index* were 'character-building' days," she said. "Now that I've had some time to reflect upon the year, I can see the truth in those words. I've got to believe that I'm more prepared to face obstacles that might be thrown in my path."

*"I'm constantly being told that my days at the **Index** were 'character-building' days,"*

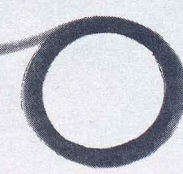
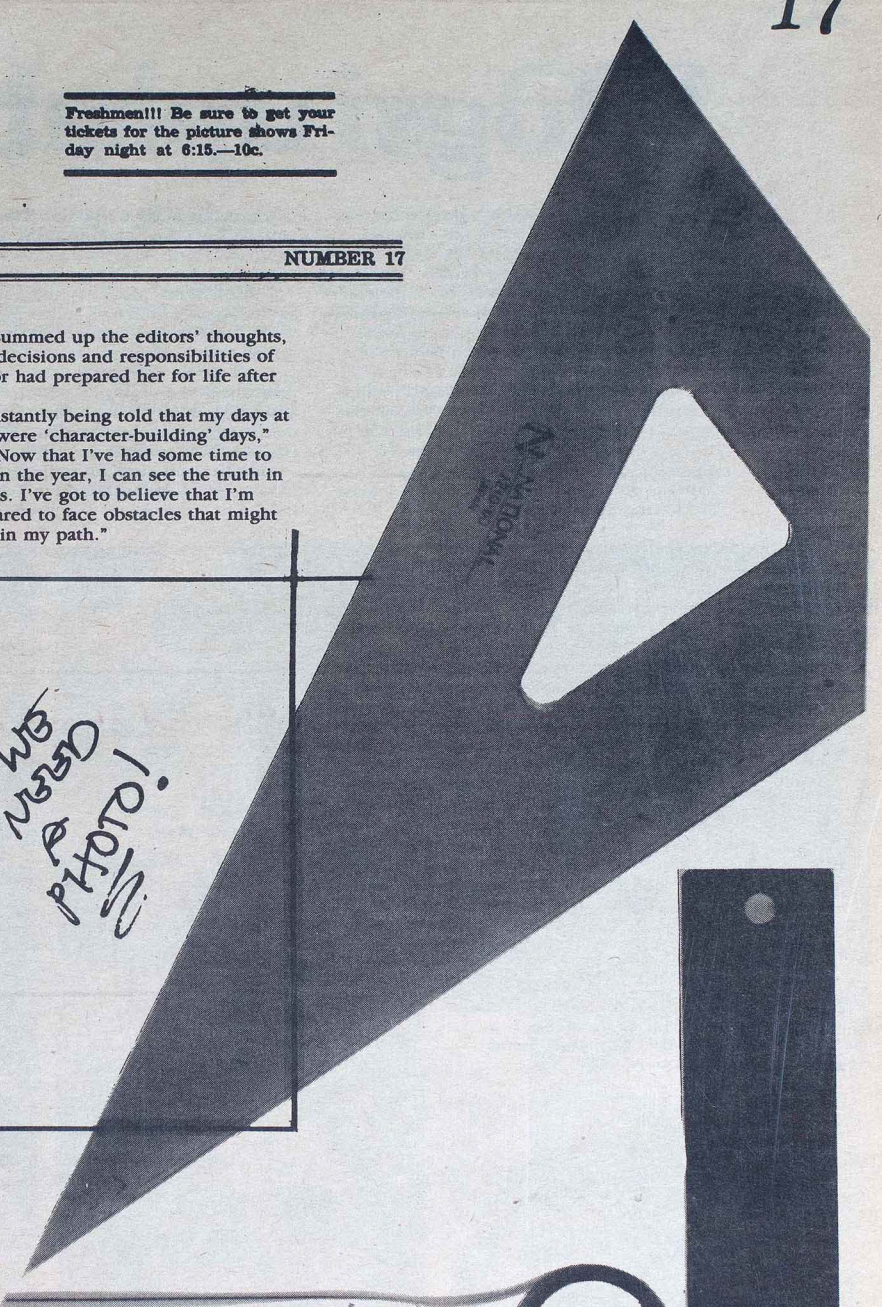
*WTS  
USED  
A  
PHOTO!*

*WTS  
USED  
A  
PHOTO!*

# Index

75 years young

*← COLOR?  
YES!*



# 'Dogs upset second-

The highlight of NMSU's winter sports season happened Jan. 30 when the Bulldogs upset Central Missouri State University (Warrensburg), 49-47 in overtime. The Mules are the defending NCAA Division II national champions and were ranked second nationally at the time of the game in Pershing Arena.

Senior Greg Gordon put in a layup with eight seconds left in the overtime to provide the winning margin and hand CMSU its first loss in Missouri Intercollegiate Athletic Association play. But Bulldog defense was the key to the win. NMSU held the Mules to 15 points in the first half and did not allow CMSU to score until more than eight minutes had been played in the first half.

Following an 81-67 home victory over Lincoln University (Jefferson City) in early February, Northeast's men's squad held a record of 13-9 overall and 4-4 in the MIAA.

Guards Milous Meadows and Jimmy Gooden and forwards Eric Harris and Greg Gordon were the offensive leaders for the Bulldogs. Senior captain Meadows was scoring 8.7 points a game, led the team in minutes played and was third in rebounding. Gooden, a junior, led the team in scoring with 11.6 points a game and assists with 12.9. Junior Harris led the team in rebounding and was second in scoring at 10.6 points a game, closely followed by Gordon, a senior, averaging 8.8.

The Lady Bulldogs stood 5-16 overall with a 2-6 MIAA record. Part of the problem was a miserable road record of 2-11. Junior forward Annette Rogers led the women's squad in both scoring and rebounding (13.5 and 9.2 a game, respectively), though she was being pushed by senior center Suzie Miller (13.2 points and 6.5 rebounds per contest).

The Bulldog wrestling squad showed marked improvement over the 1983-84 season. The team had already equalled its 1983-84 win total by early February, and had consistently placed higher in tournaments than last season.

The team was looking to advance from last year's last-place MIAA finish. Coach Don



**Kassy Arnold, junior, and Kevin Menz, sophomore, look on while Kim Sage, junior, is twirled by Jeff Wilson, junior.**



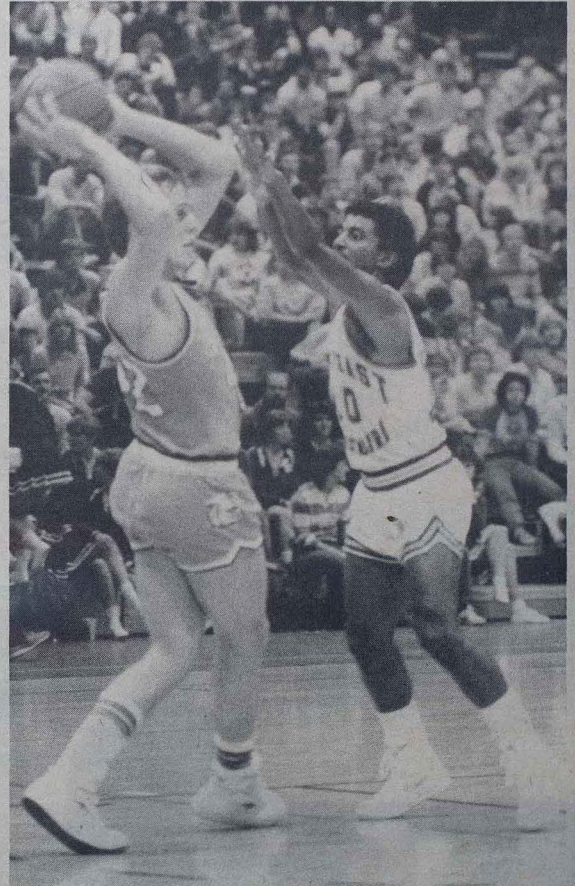
**Marlene Frahm, senior, two-time All American, track**



**Suzie Miller, senior, basketball**



**Annette Rogers, junior, basketball**



**Jimmy Gooden, junior, second-team all conference**

# ranked Mules in OT

Frazier said the team had an excellent chance to finish third in the conference tournament.

Two senior co-captains were leading the way for the team; Jerald Harter at 167 lbs. with a record of 18-6-1, and Guy Frazier at 190 lbs. with a record of 17-12. Junior Roger Osweiler was also wrestling well at 118 lbs. with a 19-11 record.

The women's track team won both of its first two meets. The team was led by senior Marlene Frahm, who set NMSU records in the shot put in successive meets. Frahm's latest mark of 49-6 will easily qualify her for the NCAA Division II National Indoor Meet.

She may be joined there by teammate Dorothy Copper, a junior. Copper's throw of

43-1 qualifies for nationals, but since only the top eight throws make the trip, Copper will probably have to better her mark by about a foot.

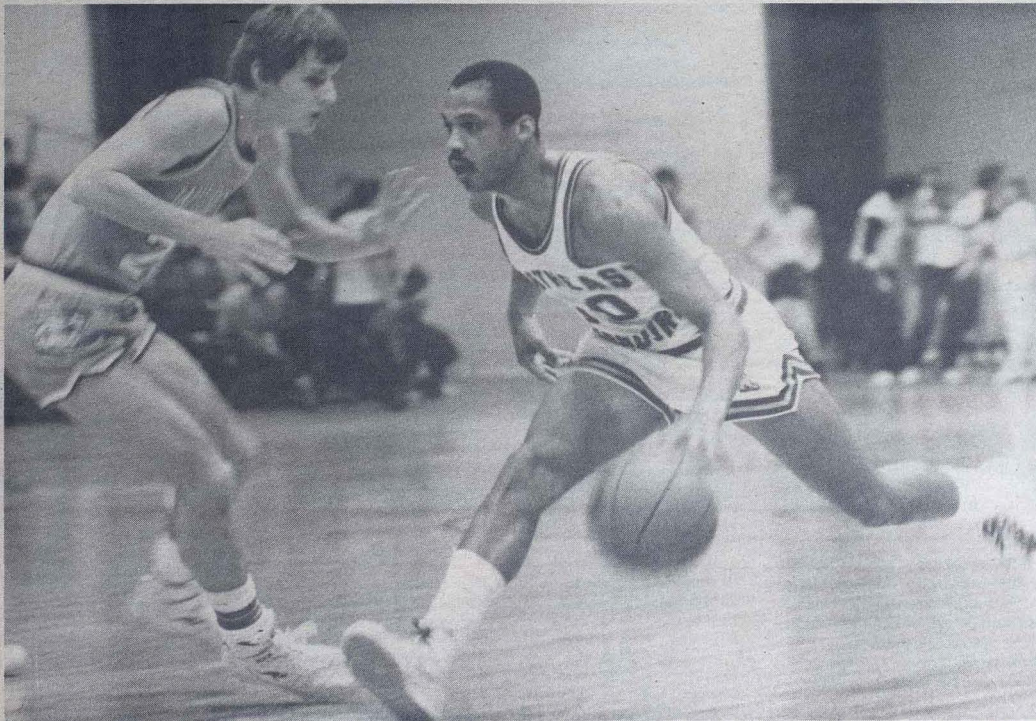
Other standouts for the women's squad have been seniors Stacey Selvey and Libby Chezum, sophomore Nan Funke and freshman Shelly Gudehus.

The men's track squad did not have as much success, finishing third in a triangular meet with CMSU and Northwest Missouri State University (Maryville) and losing a dual meet with Eastern Illinois University (Charleston).

A bright spot for the Bulldogs was senior Wade Sorenson, who twice won the high jump with leaps of 6-8 and 6-9.

The women's swimming and diving team powered through the pool to a 4-1 dual record. The ladies also won the Miracle Relays at Grinnell College (Iowa) for the fourth consecutive year. The season was highlighted by sophomore divers Sherri Haas and Shelly Kester qualifying for the national meet.

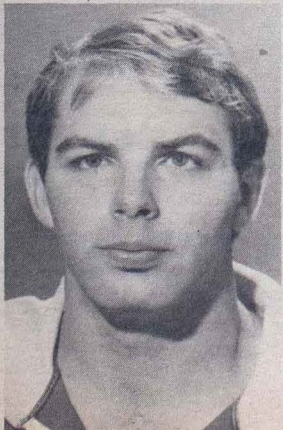
The men's swimming and diving team held a 2-2 dual record in early February. Top performers included junior Mark Holman and freshman Glen Coy in the 1,650 freestyle and freshman Eric Galvin in the 200-yard breaststroke.



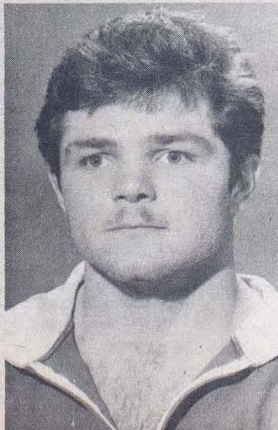
*Milous Meadows, senior captain, second-team all conference*



*Greg Gordon, senior, honorable mention all conference*

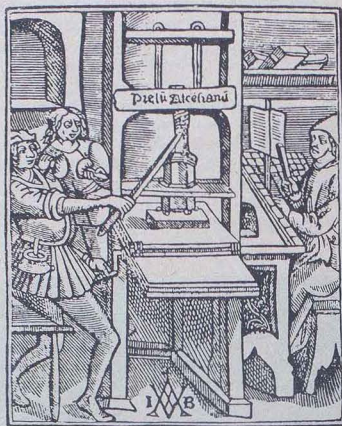


*Guy Frazier, senior wrestler*



*Jerald Harter, senior wrestler*

# alumni notes



A PRINTING PRESS OF 1507  
Enlarged from the printer's mark of Iodocua Balthaz. Alcestand, used  
on the title-pages of various books printed by him, 1507-35

## ALUMNI IN PRINT

**Dr. Ruth Towne ('39)** has published "From These Beginnings: A History of the First United Methodist Church." Dr. Towne is professor of history and graduate dean at NMSU. She is a lifetime member of the Kirksville church, and wrote the book in commemoration of the American Methodist Church's bicentennial celebration.

**Judith MacBain Alter ('64)** has written "Luke and the Van Zandt County War," published by Texas Christian University Press. This young adult novel focuses on post-Civil War tensions in East Texas through the eyes of two teenagers. Alter is an editor and free-lance author living in Fort Worth, Texas.

**Dr. Leland Bland ('62)** is the author of "Sight Singing Through Melodic Analysis: A Guide to the Study of Sight Singing and an Aid to Ear Training Instruction." The text is published by Nelson-Hall Publishers of Chicago, and stresses the links between theoretical principles and their practical application through performance. Dr. Bland is an associate professor in the music department at Wright State University (Dayton, Ohio).

**Nancy Forquer ('73)** has written a musical, "Trial of the Christmas Bells," published by Eldridge Publishing of Franklin, Ohio. The musical was written for her fifth grade students at Macon, Mo. R-I Schools, where she works as an elementary music teacher.

A biography of **Dr. LaVerne Miley ('46)** has been written by his wife, Lorene. "I Looked For A Man. . . And Found One" tells the story of the Mileys' 18 years overseas, most of it in the Ivory Coast of Africa. Dr. Miley, as a medical missionary, helped establish churches, hospitals and missions in that country. The Mileys live in Nashville, where he is a professor at Free Will Baptist Bible College. Two of their three children are career missionaries overseas.

### '13

**Viola Vogel McNeely**, retired, resides in Sweet Springs, Mo. She has a son, E. L. McNeely ('40). Her daughter, Francis Whitacre, and son, Darrell McNeely, are deceased. Two of her grandchildren graduated from NMSU. They are **Sharon Whitacre Jackson ('67)** and **Albert Ray Whitacre ('77)**.

### '20

**George R. Loughhead and Esther Redmon Loughhead ('21)** are retired and living in Poplar Bluff, Mo. They have a son, Dr. John R. Loughhead, and a daughter, Marjorie Reedy.

### '23

**Elda McClain Bartine** is residing in Kingston, Tenn. Her husband, David F. Bartine died in 1979. Her son, Dr. David E. Bartine, is a nuclear engineer.

### '27

**Ruth Bailey Beal**, Dean Emeritus of Women and Instructor Emeritus of English at NMSU, is residing in Columbia, Mo. She has two children, William F. Beal and Marian Ruth Beal ('66).

### '29

**Katie Gonnerman Kiss** is retired and living in Kirksville. She has a daughter, Dr. Marilyn Kiss.

**E. Raymond Elsbury** and wife, Rita, are retired and residing in Springfield, Mo.

### '30

**Dr. Dorothy McClure Fraser** of Kennett Square, Pa., is retired.

### '31

**Leila Hurliman Larimore** and husband, Dr. G. W. Larimore, are retired and residing in Tampa, Fla. Their children are G. L. Larimore and Lila Anastas.

**Vesta June Coddington Krafft** is residing in Cedarcrest Nursing Home in Washington, Mo. She has a son, James.

**Helen Dimmitt Brokesh** of Kirksville, is retired.

### '32

**Lucile Dougherty Caudill**, a retired teacher from Maryland, is now living in Pasadena, Calif. She has two sons, Watson G. Jr., a graduate of West Point, and William Riley, a graduate of North Carolina State University.

### '34

**Rex and Frances James Wiseman** of Simi Valley, Calif., celebrated their 50th wedding anniversary in June, 1984. They were married June 10, 1934, in Paris, Mo. In 1949 they moved to California to teach. Rex taught for 42 years and Frances for 30. The last years of their teaching were in Simi Valley, with him teaching junior high mathematics for nine years and her teaching primary grades for thirteen years at Township and Simi Valley Elementary Schools. They have two sons, James of Ontario, Calif., and John of Minneapolis, and two grandchildren, both of Ontario. A "This is Your Life" program was staged in the chapel of the Church of the Nazarene in Simi Valley.

### '35

**Sam S. Cavett Jr.** is retired and residing in Banning, Calif.

### '36

**Mary Russell Schrum** and husband, Marvin, are retired and residing in Forsyth, Mo.

**Wilton E. Nighswonger**, Des Moines, Iowa, is retired from the Iowa Department of Public Instruction. He is a nationwide consultant of Special Needs and Junior High Curriculum Revision. His wife, **Maurine Kimbrough Nighswonger ('32)**, died in 1980. He has two married daughters, Norma Shepard and Nina Havens.

**Wayne A. Frederick**, retired, lives in Metairie, La.

### '37

**Irma Banks Bennett** is a retired teacher and librarian from the Illinois Veterans Home in Quincy, Ill. She and her husband, Kenneth, who is also retired, are residing in Quincy.

**Delbert E. Maddox, D.O.**, professor of general practice at the Kirksville College of Osteopathic Medicine, retired from the faculty June 30, 1984, after 28 years. He will continue a private practice on a part-time basis. Dr. Maddox and his wife, Louise, live in Kirksville. They have a daughter, Michele, and a son, D. Matthew Maddox, D.O., ('79).

**Ruth Griggs Shryack** is retired and residing in Shell Knob, Mo. She has a son, John H. Shryack, who attended NMSU.

**Ruth Whitton Nighswonger**, a housewife, lives in Lago Vista, Texas. Her husband, Thomas, is retired. Their children are Carolyn Brann and James Nighswonger.

**Marjorie McKinney Norton** of Macon, Mo., is retired. Her husband, Glenn, is a retired farmer. Their three sons graduated from NMSU. They are **Charles W. Norton ('61)**, **David E. Norton ('65)** and **Joseph L. Norton ('66)**.

### '38

**Mildred Dieckroeger Schlanker** and husband, E. Boone, live in Montgomery City, Mo. They are funeral directors and owners of Schlanker Funeral Home. Their children are Edgar Boone Jr., Robert H. and June.

**Melba Woolf Marrs**, retired, is residing in Colorado Springs, Colo. Her husband, Harold F. Marrs, a retired lieutenant colonel in the U.S. Army, died Nov. 19, 1984.

### '39

**Elizabeth McCollum Leeper**, and husband, Denver, are retired and living in Marengo, Iowa. She formerly taught in the HLV Community School in Victor, Iowa. They have three children, Michael, Mary and John.

**Kenneth D. Creamer and Mabel Elizabeth (Betty) Carothers Creamer ('40)** of Estes Park, Colo., are retired. Their children are Michael and Roberta.

**Ramah McNabb Peek**, a retired high school teacher, lives in Green City, Mo. Her son, Dr. James M. Peek, is a physicist with Sandia Labs in Albuquerque, N.M.

**Ruby Lindberg Brown**, St. Catharine, Mo., is a junior high teacher in the Brookfield R-III School. She has a daughter, Lynda Kaye Brown.

**Elmer W. Pundmann**, director of instrumental music at Lutheran High School South and six grade schools, is residing in St. Louis. He has four children.

### '40

**James A. Cupp and Freda Patton Cupp ('41)** of Paris, Mo., both retired from teaching in 1984. They have two children, **Barbara Jean Cupp Burchett ('69)** and **Gary Allen Cupp ('74)**.

**Ruth Boyland Dulle** and husband, Roger, are retired and living in Jefferson City, Mo.

### '41

**Ken E. Cooley**, Tulsa, Okla., is a safety/health/environmental engineer and management consultant. His wife, June Britt Cooley, who attended NMSU and graduated from Wayne State University, is a third grade teacher. They have three children, Douglas, Jane and Martha.

**W. Wallace Farmer Sr.**, and wife, Faye, are living in rural Kirksville. He is a retired farmer. Their children are Carol Farmer Lowe, Nancy Farmer Foglesong ('69), William W. Farmer Jr. ('71) and James M. Farmer ('78).

## '42

**Mary Beth Cook Jack** of Oklahoma City, retired in March 1983 from Kerr-McGee Corp. Her husband, Arch, is membership director of Oklahoma City Chamber of Commerce. Their children are Barbara Sobol, David Jack and Max Jack.

## '43

**Pauline Evans Pullen** is retired and residing in Springfield, Mo. She has a daughter, Linda Belle, and a son, Mark Evans.

**Mary Belle Fanning** of Center, Mo., is retired.

**Martha Lierly Margosian**, a housewife, lives in Salem, Ore. Her husband, Leon, is retired.

**Martha Ann Taggart** of Raymore, Mo., is retired.

## '44

**Jenifer Warnock Sellers**, an executive secretary, lives in Newark, Calif. Her children are Theresa, Carol, James, Charles and Suellen.

**Claire Swingle Millemon**, Princeton, Mo., retired in 1977 as a mathematics teacher at Princeton R-V High School. Her husband, Fred, is a retired cattle farmer. Their children are Mary Jane Millemon Merrill ('68) and John F. Millemon ('73).

## '46

**Loraine Kehoe** of Moberly, Mo., is a retired teacher.

**Phyllis Reger Sherwood** and husband, Willard, are living in LaBelle, Mo. She retired in May 1984 from the LaBelle Elementary School where she taught for 24 years. Mrs. Sherwood began teaching at the age of 18 and taught a total of 32 years. They have a son, Mark D. Sherwood ('75).

**Carolyn Magruder Baughman**, an elementary music teacher, is residing in Marion, Iowa. She has three children, Paul Baughman, Charlotte Baughman Mayahi ('83) and Jane K. Baughman ('79).

## '47

**Margaret Quinn Walker**, Sandusky, Ohio, is a fabric representative. Her children are Jeffrey Walker, Jane Walker Plank and John Walker.

**Helen Hiner Shaver** and husband, Gene, are residing in Indianapolis. She is a piano teacher and he is an associate manager for Producer's Marketing. They have three children, Bonnie Howerton, Steve Shaver and Janet Shaver.

**Naomi McFarland Knight** is retired and living in Stillwater, Okla. Her husband, Dr. Homer L. Knight ('33), is deceased.

## '48

**Helen Cox Bross** of Maryland Heights, Mo., is retired. Her husband, Kenneth Bross, died Feb. 19, 1983. She has three sons, David, Steven and John.

**Johanna Zeigel Wood** and **William S. Wood** ('74) are residing in Kirksville. She is in sales at Beard's Gallery and he is a student. They have twin daughters, Catherine and Elizabeth.

**Walter O. Webber** teaches freshman English at the Missouri Military Academy in Mexico, Mo. He and his wife, Dorothy BeGole Webber, who attended NMSU, are residing in Columbia, Mo. Their children are Jerry Don, Janet Dee and Charles Mason ('84).

**Francis M. Walter**, dean of students at the Kirksville College of Osteopathic Medicine, has been named the Living Tribute Award recipient for 1985. The announcement was made at the annual assembly meeting of the Kirksville Osteopathic Alumni Association held in Las Vegas in November. He and his wife, **Georgia Warner Walter**, director of the A. T. Still Memorial Library at KCOM, live in Kirksville.

## '49

**J. L. Van Laningham** lives in San Francisco, where he is owner of the Amsterdam Hotel.

**Wilma Kemp White** is retired and residing in Bloomington, Ill. Her husband, Donald L. White, died July 14, 1983. She has a daughter, Nancy White Woods, and a son, James Michael White.

## '50

**Edward Zalen, D.O.**, of Cuyahoga Falls, Ohio, is a physician in general practice. His wife, Norma, is a medical secretary. They have four daughters, Marsha Novak, Victoria Tucker, Cynthia Zalen and Teresa Ashenbaugh.

## '52

**Berthamae Howard** is retired and residing in Hannibal, Mo. She has four children, Al M. Howard ('53), Dr. Ronald Mac Howard ('55), Helen Robinson and Caroline Sapp.

**Roger W. Biesemeyer**, Jefferson City, Mo., is an agent with State Farm Insurance Companies. His wife, Marilyn, is a purchasing director for Bench Mark Tool. Their children are Kristie Lynn, Kathie Ann, Mark Lindsey, Kimberlie Holly, Eric Alan and Kami Joy.

**Oren S. Gale** and **Ila Jane Watt Gale** ('53) live in Overland Park, Kan. He is a group merchandise manager for Sears Roebuck & Company Mid America Group and she is a part-time instructor at Johnson Community College. They have five children, Mark, Carol, Gwynne, Melinda and Wayne.

## '53

**Glenn O. Dickenson, D.O.**, is residing in Owensville, Ind., where he is a family physician. His wife, Brandy, is an office manager. Their children are Sadonna Wilson and Glenn O. Dickenson II.

**Jane Ronan Palmer** lives in Prairie Village, Kan. Her husband, Ralph, is a cost analyst. They have five children, Beth, Mike, Sue, Patrick and Ann.

**Frances Fishback Sparks** and husband, Perle, of Hurdland, Mo., celebrated their 60th wedding anniversary Sept. 25, 1984. An open house was held in their honor at the home of their son, **Wesley P. Sparks** ('52), in Kirksville. Mr. and Mrs. Sparks were married Sept. 20, 1924, in Fort Madison, Iowa.

**Olen G. Bradshaw**, De Soto, Mo., is a teacher at De Soto High School and operates Bradshaw Accounting and Tax Service. His wife, **Carolyn Sue Goodding Bradshaw** ('56), is a civics teacher, also at De Soto High School. They have three children, Carol Jean Bradshaw, Margaret Bradshaw Watson and Beth Ann Bradshaw, a student at NMSU majoring in home economics.

## '54

**Katherine Bledsoe Epperson**, a retired teacher, lives in Independence, Mo. Her children are **D. Craig Epperson** ('62), **Sharon J. Epperson** ('63) and Robert Epperson.

## '55

**G. Larry Gordon** is a region industrial sales manager for Morton Salt Co. He and his wife, Mariel, are living in Allen, Texas. They have two sons, Kevin and Scott.

**O. Jim Inlow** and **Leila Peterson Inlow** ('56) are residing in Mexico, Mo. He is a district manager/salesman with Hillyard Inc., and she is a secretary for the Presbyterian Church. Their daughters are both students at NMSU. Pamela Jo is a junior and Stephanie Ann is a freshman.

## '57

**Donald A. Boone**, an activity manager, and wife, Sharon, are residing in Lilburn, Ga. They have a son, Bradley.

## '58

**Tom R. Kent** is a pastor/teacher. He and his wife, Marie, a legal secretary, are living in Nashville, Tenn. Their children are Alisa, Teresa and Charles.

**Paul P. Price**, Libertyville, Ill., is manager of International Sales and Marketing.

**Dr. J. Ray Williams** is residing in Tampa, Fla., where he is a professor at the University of South Florida. He has a son, Michael Darwin Bastian Williams.

**Ron and JoAnn Dodge Thomas** live in Florissant, Mo. He is director of bands at Hazelwood Central High School and she is an independent piano teacher and an evening school adult typing teacher. They have three children, **Shari Leann Thomas Barron** ('82), Denise Joy Thomas, a senior at NMSU, and David Brent Thomas, a junior at NMSU.

**Donald L. Clark** and **Elsie Miller Clark** ('62) of St. Charles, Mo., are teachers. He teaches sixth grade at Hardin Middle School and she is a third grade teacher at Null Elementary School.

## '59

**Shirley Jeffries Des Camp**, a homemaker, lives in Orchard Park, N.Y. Her husband, Victor, is an engineer for Westinghouse. They have two sons, Arthur Stephen and William Curtis, and one daughter, Lori Renee.

**Dr. Jerry Vittetoe**, associate professor of business and office education at NMSU, has been named to "Who's Who in the Midwest", a regional extension of "Who's Who in America". He and his wife, **Diana Jo LeFevre Vittetoe**, an elementary principal at Bucklin R-II Schools, are living in Kirksville. They have two children, Mark Edward and Dori Diane.

## '60

**Marline Elam Hunt** received a master's in speech pathology from NMSU in May 1984. She is residing in Leon, Iowa, where she is a speech clinician.

**Rex G. Hardman, D.O.**, and wife, Jodi, of Kirksville are the parents of a son, Luke Andrew, born Aug. 2, 1984. Dr. Hardman is a general surgeon.

**Donald D. Jones**, a fifth grade teacher, lives in Bridgeton, Mo. His wife, Dr. Ella J. Jones, is director of reading, grades K-12, in the Hazelwood School District. They have a daughter, Julie, and a son, Jeff.

**David Doctorian** and wife, Phyllis, of Macon, Mo., celebrated their 25th wedding anniversary Aug. 5, 1984. They were married Aug. 12, 1959, in Kirksville. They have lived on a farm northeast of Macon for the past 25 years. Sen. Doctorian was elected to the Missouri State Senate in 1977 and re-elected in 1978 and 1982. He is a public speaker throughout Missouri and neighboring states and has been a minister at Plevna Christian Church for 10 years. They have four children, **Sherry** ('82), Sonya, Susan and David.

**Sandra Cragg Beyer**, San Jose, Calif., is in policyholder service for Massachusetts Mutual Life Insurance Co. She also is a singer in a 40-voice women's chorus named "Zingers." Her husband, Lowery, is in sales with Airwick Industries.

**Carolyn B. Frick**, Kirksville, is a part-time mathematics instructor at NMSU. Her husband, Vance, is an attorney. Their children are Karen and Chris.

## '61

**Dr. Martha Cokerham Bagley** is residing in Milwaukee, where she is an assistant dean in the School of Education at the University of Wisconsin.

**Robert and Carolyn Sue Wantland Mason** are living in Kirksville. He is a professor of science at NMSU and she is a teacher in the Kirksville R-III Schools. They have two sons, Richard and Randy.

**Rev. Ernest L. Deatrick** and wife, Dora Mae, are living in Wyaconda, Mo., where he is pastor of the First Baptist Church. Their children are David Deatrick, Linda Deatrick Kaufman ('69) and Timothy Deatrick.

**Alfred W. Nelson**, wife, Carol, and daughter, Susan, are residing in Margaretville, N.Y. Alfred is an athletic director and physical education teacher.

## '62

**Joan Davis Heimendinger**, Vincennes, Ind., is a student at Indiana State University. Her husband, Michael, is superintendent of construction for Stone and Webster Engineering Corp. Their daughters are Marni Jo, Megan Jean and Melaina Jane.

**M. Margaret Lewis Wright** and husband, Rex, are living in rural New Sharon, Iowa. She is a home economics teacher at Oskaloosa High School and he is a farmer and farm manager. They have a son, David.

**Gary G. Hendren**, Maryland Heights, Mo., is a mathematics teacher and athletic coordinator at Parkway Central High School. He is also an off-campus instructor for NMSU at St. Charles. He has two daughters, Sheri, a senior at NMSU, and Jana. His wife, Lynda, is a mathematics teacher at Pattonville School.

# update

## Fine Arts

You may soon be able to see a movie with distinct Northeast connections at a theater near you.

"The Dream Spinner," a film about German history in Missouri, is scheduled to open at theaters in six Missouri cities this spring. It will then be distributed nationwide for use by libraries, historical societies, schools and colleges.

Several NMSU faculty members and students have contributed to the project, including James E. Paulding, associate professor of humanities, who produced the film.

Paulding said all footage for the film has been shot, but the tasks of editing, adding the musical score and raising funds to cover laboratory costs remain.

James Severns, professor of dramatics, was a consultant for the film. Leon Karel, professor emeritus of humanities, and David March, professor emeritus of history, served on the film's advisory council. A major role in the movie was performed by drama student Randy Bame, and music student Louise Klopp served as a researcher.

"The Dream Spinner" focuses on Gottfried Duden, a German lawyer who came to St. Louis in 1824. Tens of thousands of Germans came to Missouri in the 1800s because of a book Duden wrote. The film then shows four modern Missouri families of German descent and their accomplishments.

Paulding wrote the film's score, which will be performed by the NMSU Symphony Orchestra, under the direction of William Fitzsimmons, professor of music. A special choir from the Kirksville Upper Elementary School will sing "The Dream Spinner."

Paulding said the next step will be going to Germany to complete arrangements for the film to be shown on German National Television. The film could also be seen on American television in the future.

**Nancy Stoops**, a physical education instructor at Southeast High School, lives in Springfield, Ill.

**Irene Johnson Wright** of Meadville, Mo., is a retired teacher. Her husband, Robert, is a retired funeral director. They have a daughter, Diana Wright Walker, and a son, John R. Wright.

**Roger M. Dreesen** of Austin, Texas, is a real estate broker. His daughters are Tracy, a senior at NMSU, Sherri, a sophomore at NMSU, and Marcy.

**Georgina Shouse Morton** and **J. Fred Morton** ('67) are living in Chambersburg, Ill. She is a physical education teacher and volleyball coach and he is superintendent of Mercedosa-Chambersburg Schools. They have two sons, John and Jason.

**Jerry L. Primm**, of Loves Park, Ill., is an elementary principal at Windsor School, Harlem Consolidated Schools #122. He has two children, David and Michelle.

**Dr. Thomas R. Sommerkamp** is living in Warrensburg, Mo., where he is an associate professor of psychology at Central Missouri State University. His children are Thomas Buckley and Margaret Ann.

**LaVerne R. Mosher**, Strawberry Point, Iowa, is assistant director of Special Education Services for Keystone Area Education Agency. His wife, Paula, is a note teller at Union Bank & Trust in Strawberry Point. They have a son, Scot, and a daughter, Pamela.

**L. Wayne Farrell**, director of taxes for Reynolds Metals Company, has been elected international president of Tax Executives Institute Inc. He and his wife, Cheryl, are residing in Richmond, Va. They have two daughters, Shelley and Kimberly.

**Terry M. Hall** and wife, Rhonda, live in Waukesha, Wis. He is manager of distributor training for Miller Brewing Company and she is an administrative assistant with Allstate Insurance. Their children are Teana, Debbie, David, Daniel and Aaron.

**Dr. Peter J. Sireno**, dean of instructional services at Dodge City (Kan.) Community College, has been selected for inclusion in the 19th edition of "Who's Who in the Midwest." He and his wife, Ellen Sue, have three daughters, Liza, a freshman at NMSU, Felicia and Maria.

**James P. Weigand**, Hanford, Calif., is an eighth grade teacher at Stratford Elementary School. His wife, Gale, is an adjuster for Armstrong Rubber Co. They have three children, Cassie, Erika and Nathan.

**Donald L. Krigbaum** and wife, Nancy, are residing in Peoria, Ill., where they both teach in the Peoria public schools. He is a fourth grade teacher and she is a remedial reading teacher. Their children are Kevin and Dena.

**Larry and Stephany Chromoga Beaver** live in Olathe, Kan. He is an athletic director, teacher, football and basketball coach at Kansas School for the Deaf and she is a ninth grade social studies teacher. They have a daughter, Kelly, and a son, Cory.

**Onofrio Monachino** of Mokane, Mo., is superintendent of schools. His wife, Nancy, is a broadcaster with KAAZ Radio. Their children are Christine, Candace, Onofrio III, Rebecca and Ted.

**Dr. L. Samuel Fleak**, wife, Sandra, and son, Lewis Aaron, are living in Kirksville. Sam is a farmer and Sandra is an assistant professor of accounting at NMSU.

**M. L. Steinmetz III** and **Karen Cockriel Steinmetz** ('73) reside in St. Charles, Mo. He is a partner in Edward D. Jones & Company and she is a housewife. They have three daughters, Melissa, Suzanne and Stephanie.

**Paul LaRue Baker Jr.**, and wife, Virginia, are living in rural Clarence, Mo., where he is a farmer. Their sons are Troy LaRue and Trenneth Paul.

**Robert M. Kelley**, wife, Patti, and children, Bobette Susan and John Adrian, are residing in Quincy, Ill. Robert is a field sales manager with the Wilton Corporation of Palatine, Ill.

**Edward and Thelma Milhoan Duncan** live in Lawson, Mo. He is an administrator for the Lawson RXIV Schools and she is a tutor at Watkins Mill Park Camp. Their children are Tammy and Lance.

**Sharon L. Schlapia** of Edina, Mo., is a vocational home economics instructor and region 3 adviser to FHA/HERO.

**Richard D. Burns** is principal of Westran R-I High School in Huntsville, Mo. He and his wife, **Sharon Bishop Burns**, and daughter, Amy Lynn, who was born May 31, 1984, are residing in Moberly, Mo.

**Terry R. Povendo** and **Mary Sheryl (Sheri) Wigal Povendo** ('69) live in Manchester, Mo. He is a science teacher and volleyball coach at Parkway West High School and she is an elementary physical education teacher at Sorrento Springs Parkway. They have two sons, Rick and Chris.

**H. Norman Clarkson, D.O.**, has been selected to be included in the 1984-85 edition of "Who's Who in the Midwest." He and his wife, Deborah, and children, Veronica, Wesley and Vanessa, are residing in Kirksville.

**Ronald M. Berry** received the doctor of education degree from the University of Missouri-Columbia in 1984. He is principal of Larimore Elementary School in the Hazelwood School District and vice president of the Missouri Association of Elementary School Principals. He and his wife, Joan, and children, Daniel, Sara and Benjamin, are living in Florissant, Mo.

## '66

**Connie Racey Courtney**, Memphis, Mo., is director of federal programs at Scotland County R-I Schools. Her husband, John M. Courtney, who attended NMSU three years, is a business manager for Memphis Pepsi-Cola. They have a son, John Foster.

**Jaunett Switzer Neighbors** is an assistant professor in the business division at Central Virginia Community College in Lynchburg. She and her husband, Warren, a hardware consultant with Bailey-Spencer Hardware, are residing in Gladys, Va. They have a son, Warren Benjamin III, and a daughter, Tonessa Ann.

**L. Duane Hendrichsen** and wife, Sandra, are living in Burlington, Iowa. He is a district manager with Job Service of Iowa and she is an inventory analyst. Their children are Laura and Martin.

**Judith (Judy) Ann Thomas** is living in Chariton, Iowa, where she is the city recreation director.

**W. Hadley Hoyt III, D.O.**, has completed a residency in otorhinolaryngology, ora-facial plastic and head and neck surgery at Kirksville Osteopathic Health Center and has joined the staff of the Des Moines General Hospital and the Wilden Clinic. He and his wife, **Anita Gatlin Hoyt** ('68), and children, Cord and Tiffany, are residing in Des Moines, Iowa.

**Maralee B. Thompson** of Kirkwood, Mo., is an administrative coordinator in manufacturing.

**Donald R. Kehoe**, wife, Sandra, and children, Stephanie and Stephen, are living in Burke, Va. Donald is chief of EP/EO Support & Services Branch of the Internal Revenue Service.

**Jerry D. Ledbetter** is assistant vice president of Lafayette Life Insurance Co. He and his wife, Darlene, and children, Sandra and Gregory, are residing in Lafayette, Ind.

**Mary Lee Jorgenson**, Kirksville, is a teacher at Kirksville Junior High School. Her husband, Dr. Dale A. Jorgenson, is chairman of the Division of Fine Arts at NMSU. Their children, all graduates of NMSU, are Dale A. Jorgenson Jr. ('73), Rebecca Jorgenson Selser ('73), Mark S. Jorgenson ('78), Janet I. Jorgenson ('79) and Eric L. Jorgenson ('83).

**Charles W. Byers II** of Roseville, Ill., is a production supervisor with Warren Achievement Industries over the mental and physical handicapped at Monmouth, Ill. His wife, Elaine, is a payroll clerk at Monmouth College. They have a son, Chris, and a daughter, Meghan.

**Carol B. Irvin** is living in Minot, N.D., where she is an instructor in early childhood education at Minot State College.

'67

**Mary Jane Lavallee Klunder** and **Douglas Todd Klunder** ('68) are living in Plantation, Fla. She is a management training consultant and he is a special agent with the FBI. Their children are Mark, Ryan and Erin.

**Dennis P. Carey**, wife, Patricia, and sons, Joshua and Jacob, are residing in Oklahoma City. Dennis is president of Agape Industries Inc.

**Henry J. Steinlage**, St. Louis, is a district manager for Reliable Life Insurance Co. His wife, Susan, is a systems analyst. They have three daughters, Lisa, Valerie and Kathy.

**Lucy M. Hall**, a retired teacher, lives in Princeton, Mo. She is a volunteer pre-school director at the Mercer Baptist Church in Mercer, Mo. She has three daughters, **Janet Hall Epperson** ('63), **W. Ruth Hall Brown** ('65) and **Mary Ann Hall Gates**.

**Jimmie W. Harris**, wife, Margaret, and sons, David and Brian, are living in Stilwell, Kan. Jimmie is supervisor of estimates and distribution for John Deere Company, Kansas City Branch.

**Gerald L. Cowell**, Afton, Iowa, received a doctor of education degree in educational administration from Drake University in September 1984. He is superintendent of schools, East Union Community School District, in Afton. His wife, **Connie Close Cowell** ('68), is an instructor at Southwestern Community College in Creston, Iowa. They have a son, Nathan.

'68

**Mary Parrett Collopy** of Agency, Iowa, is a production scheduler with John Deere. Ottumwa Works.

**Vito P. DeLaura**, wife, Cynthia, and children, Nicholas, Vito Jr. and Jennifer, are residing in Northvale, N.J. Vito is a teacher/coach.

**Gordon R. Benge** and **Jane Adams Benge** ('77) live in Clarence, Iowa. He is an industrial arts instructor at Clarence-Lowden Community Schools and she is an office sales assistant for Twin State Engineering and Chemical Co. They have a daughter, Amanda Jo.

**William S. Steinlage**, a vice president for Reliable Life Insurance Company, is residing in Creve Coeur, Mo. His wife, Sandy, is a property manager. Their children are Tracy and Billy.

**William E. McDannold Jr.**, is living in Bismarck, N.D., where he is a hunter education supervisor with the North Dakota Game and Fish Department. His wife, Carolyn Sue, is a contract specialist. They have two children, William Andrew and Raina Beth.

**Louis and Cheryl Henry Cimmino** are residing in Overland Park, Kan. He is an assistant regional director, region 17, for the National Labor Relations Board and she is a housewife. Their children are Tige Joseph and Tas Everett.

**Douglas N. Underwood**, an elementary principal, is living in Chesterfield, Mo.

**Kathleen Lavallee Sears** is a physical education specialist for the Department of Defense Schools in the Republic of Panama. Her husband, Jeffrey, is an electrical engineer. They have two daughters, Katherine Theresa and Shauna Jean. Their address is APO Miami.

**Victor H. Kaylarian, D.O.**, is chairman of the department of medicine at the University of Osteopathic Medicine and Health Sciences in Des Moines, Iowa. Dr. Kaylarian is residing in Johnston, Iowa.

**Dolores Overstreet Hannam** and **Bernard R. Hannam, D.O.**, ('71) are living in Newport Beach, Calif. She is a homemaker and he is a neonatologist at Hoag Memorial Hospital. They have a daughter, Holly.

**Robert L. Moore** and wife, Sharon, of Memphis, Mo., are the parents of a son, Chase Eric, born June 29, 1984. Rob is principal of Scotland County R-1 School and Shari is a teacher at the same school.

**Larry and Twila Moore Sears** reside in Bloomington, Ill. He is a high school consumer education teacher and she is a retail advertising salesperson. They have a son, Chad, and a daughter, Tiffanie.

**Terry K. Crow**, Minneapolis, is a regional underwriter manager with The Hartford Insurance Group. He has a son, Jon.

**Donald L. Lohr** and **Jeanine Nill Lohr** ('69) reside in Keokuk, Iowa. He is a guidance counselor and she is a substitute teacher. They have three children, Jeffery, Rebecca and Amy.

**Marie Motter Novinger** is a second grade teacher. She and her husband, Lloyd, are living in rural Novinger, Mo., where he is a farmer. They have a son, **Dr. William Phillip Novinger** ('59), and a daughter, Elizabeth Novinger Lawler.

'69

**Gayle Lindley Grant** is living in Chicago, where she is a teacher. Her husband, Dewitt, is employed at the Chicago Public Library. Their children are Randall, Karissa and Philip.

**James E. Smith** and wife, Barbara, are residing in Creve Coeur, Mo. He is manager of finance with Southwestern Bell Telephone Company and she is a computer programmer. They have four children, Kelley, Scott, Matthew and Jamie, who was born in 1984.

**Joyce Stroup Stombeg**, St. Charles, Mo., is a teacher in the Normandy School District. She has a daughter, Sherree.

**Carol Amenell Burr** lives in Burlington, Iowa, where she is a teacher in the Burlington Community School System. Her husband, Robert, is a farmer. She has three stepchildren, Lisa Burr Corman, Harley R. Burr and Wesley R. Burr.

**Dr. Paul A. Wagner Jr.**, is an associate professor and director of the Institute for Logic and Cognitive Studies at the University of Houston-Clear Lake. His wife, **Dr. Karen Seroka Wagner** ('70), is coordinator of research, neurosurgery, at the University of Texas Medical School-Houston. Their children are Nicole, Eric and Jason. They are residing in Webster, Texas.

**Allen J. Wilson** and wife, Carla, of Queen City, Mo., are the parents of a son, Jeremy Allen, born July 17, 1984. They also have two daughters, Robin and Jamie. Allen is a farmer and Carla is employed at Hollisters Inc.

**Allen Kressman**, wife, Barbara, and children, Brad, Beth and Jennifer, are living in Margate, N.J. Allen is a physical education teacher and Barbara is a social worker.

'70

**Sandra Botham Lewis** and **Daniel A. Lewis, D.O.** ('75) are residing in Paris, Mo. She is a registered nurse and he is a physician. They have four children, David Alan, Amy Elizabeth, Matthew Nathan and Timothy Noble.

**Saundra Pearson Beauchamp** and sons, Josh and Travis, are living in Slidell, La. She is head nurse, ICU-recovery room, at Humana Hospital in New Orleans.

**Stephen C. Carlson** and **M. Virginia Carlson** ('72) live in Wheaton, Ill. He is a physical education teacher and she is an executive secretary.

**Hugh A. Schuetz Jr., D.O.** and **Deborah Gillen Schuetz** ('73) are residing in Aberdeen, Wash. He is a physician and she is a housewife.

**Terry and Donna Sees Loose** live in San Jose, Calif. He is a project leader MIS with Four Phase Systems and she is a teacher at Westerner Pre-School. Their sons are Brian and Alan.

**Jean Clingman Coppock** is a customer service manager with Teleconnect, a long distance resale company. She and her husband, Mark, an attorney, are residing in Cedar Rapids, Iowa.

**Richard L. Theriault, D.O.**, and **Kathleen Gilbert Theriault** ('71) are living in Houston. He is a junior faculty associate at the University of Texas and a physician at M.D. Anderson Hospital and she is a homemaker. Their children are John, Rachel, Benjamin and Sarah, born in 1984.

**Ronda Judd Weaver** of Greenwood, Mo., is a fifth grade teacher at Westview Elementary School in Lee's Summit. Her husband, Dr. Dennis Weaver, a veterinarian, owns Green Summit Animal Clinic. They have two children, Holli and Kerby.

**Steven R. Justice** and wife, Kathy, live in League City, Texas. He is an instructor in the alternative learning program for the Goose Creek Consolidated Independent School District in Baytown and she is a program coordinator with the Family Service Center of Galveston County.

**Stephen B. Chatten, D.D.S.**, is living in Quincy, Ill., where he is a self-employed dentist.

**Michael J. Dickerson** and **Patricia Jacobs Dickerson** ('71) are residing in Winterset, Iowa. He is an insurance agent and she is a kindergarten teacher. They have two children, Andrea and Brian.

**Ronald E. Orf** and **Janet Greenstreet Orf** ('72) are the parents of a daughter, Kari Quinn, born Sept. 19, 1984. Ronald is a guidance counselor in the Tripoli School system and Janet is a homemaker.

**Catherine Hemmer Eads**, husband, Alan, and son, Matthew, are living in Moberly, Mo. Cathy is head of the language arts department and an English teacher and Alan is with ERA Realty.

**Richard J. Rother Jr.**, wife, Sandy, and sons, Zack, Rick and Aaron, are living in Sturgeon, Mo. Rick, a physical therapist, is director of rehab services at Boone Hospital Center in Columbia.

**Sharon Bang Ginther** of Davenport, Iowa, is a special education teacher. Her husband, Scott, is with the Davenport Park Board.

**Art W. James** is residing in Hemet, Calif., where he is a mathematics department chairman, computer coordinator and mathematics teacher at Hemet Junior High School.

**Pamela Baker Sylvara**, St. Louis, is principal of Gotsch Intermediate School in the Afton School District. This is a newly reopened school with 254 fourth and fifth graders. Her children are Tod, Tina, a student at NMSU, and Troy, who plans to enroll as a freshman at NMSU in 1985.

**Mary Jurgensen Gleissner** and **Richard A. Gleissner** ('71) reside in Portage, Wis. She is a teacher of the gifted and talented and he is owner of a business. They have a son, Christopher, and a daughter, Sarah.

**Nancy Tague Platz** and husband, Larry, of Brashear, Mo., are the parents of a son, Trent Andrew, born June 29, 1984. They have one other son, Kyle Eugene. Nancy is a physical education and English teacher at Kirksville High School and Larry is a barber.

'71

**James M. Farmer**, wife, Bonnie, and children, Aaron and Abbey, are residing in West Valley City, Utah. James is a guidance specialist at Jordon School District in Sandy, Utah, and Bonnie is a student at the University of Utah.

**Vincent K. S. Tam** of Katy, Texas, is a land processing supervisor for Superior Oil. His wife, Nancy, is a well-log analyst with Chevron Geosciences.

**Sandra Berger McBratney**, a homemaker, is living in Dayton, Ohio. Her husband, Dr. Robert McBratney, is a physician. They have three children, Colleen, Brendan and Morgan.

**Douglas J. Peterson** and **Nancy Fountain Peterson** ('72) are residing in Trenton, Mo. He is an automation coordinator, USDA-ASCS, for the state of Missouri and she is a substitute teacher. Their children are Aaron, Amy and Ethan.

**Billie Norman Clark**, Arnold, Mo., is the owner of B. Clark's Produce, a produce company and wholesale route.

**Anthony (Tony) Mitchell** of Silvis, Ill., has been appointed an instructor in the chemistry department at Black Hawk College in Moline, Ill.

**Dale L. Atteberry**, wife, Linda, and son, Christopher, are living in Danville, Ill. Dale is a training supervisor, central foundry division, with General Motors Corporation and Linda is a special education teacher in district 118.

**Ingrid Wei-Ting Yin Chang**, Houston, is an assistant city controller for the city of Houston. Her husband, Disson, is an engineer. Their children are Amy and Wendy.

# update

## Language & Literature



Imagine trying to learn Russian—a language with an alphabet consisting of 36 letters. Only about half of its letters resemble those of our alphabet. Of those that do, few are pronounced similarly. And despite the fact that Russian words are phonetically spelled, it's a difficult task to handwrite the characters accurately enough that there is no confusion as to which letter it is. But for Gregory Richter's class, learning Russian is a little easier due to a Russian language program designed by Heinz Woehlk, assistant professor of English.

Woehlk has nearly completed a program for the IBM PCjr that will write the print in both Russian and English. Within eight man-hours of completion, this program will probably be the only one of its kind available. Admittedly, there are other foreign language programs, but none for Russian.

"The similarity stops in that they're...foreign language programs. The Russian program is basically a Russian text processor. The German and Latin foreign language programs are designed for students to drill...in vocabulary and inflections."

The actual Russian characters for the program of Woehlk's original program design and implementation, was provided by Richter, assistant professor of foreign language. Richter speaks 10 languages "in varying degrees."

"His (Richter's) task was to design the characters of the Cyrillic alphabet (used in Russian) in eight-by-eight grids," Woehlk said.

The total 64-point area of dots of light, either on or off, make up each Cyrillic letter.

"This kind of processing is ideally suited for the IBM PCjr," Woehlk said, "because all 256 characters that come with the computer can be redesigned by programming without losing the original set. When someone presses 'F,' the computer character that prints the 'F' sound will be displayed." In addition, "one key press will...toggle English and Russian," Woehlk said.

Handwriting varies in English, but Woehlk said discrepancies in the way a Russian letter is written "might cause a student to have trouble recognizing what it is. This program eliminates the problem totally."

Russian words are spelled exactly the way they sound—that is, to a Russian—so it is fairly easy for a student of Russian to spell using this program. Each of the Russian characters is correlated to the keyboard character it sounds like.

"Some of the (Cyrillic) letters that look like Latin letters are pronounced differently," said Richter. "You always have to think of the sound."

"It's designed for Dr. Richter to produce translation and passages of text," Woehlk said.

"Once they (students) use this program, they'll be on their way to mastery of the language," Richter said.

The potential marketing capabilities for this first in foreign language programs are extensive. Although Woehlk has considered this, he's made no decisions.

**Philip and Diana Gay Melton Luksetich** live in Knoxville, Iowa. He is a social studies teacher and coach at Knoxville High School and she is a substitute teacher. They have three children. Amy, Jena and Andrew.

**Gerald (Gerry) Leath** is a tooling manager with Winnebago Industries. He and his wife, Gail, are residing in Forest City, Iowa.

**Charles C. Gray Jr.**, and wife, Roxanne, are living in Davenport, Iowa. He is a teacher and she is a teacher's assistant. Their children are **Kelly D. Halma** ('82), Tammy Crafts and Lisa Gray.

**Gary M. Van De Velde** and **Kristin Linneman Van De Velde** ('73) of Jefferson City, Mo., are the parents of a daughter, Shannon Rhea, born Oct. 2, 1984. They have one other child, Paige Leigh. Gary is a district conservationist for USDA Soil Conservation Service. Kristin, a housewife, was formerly a work experience counselor/coordinator.

**Raymond J. Moncavage** and **Barbara Neff Moncavage** ('73) reside in Mt. Carmel, Pa. They have a son, Matthew, and a daughter, Melissa. Raymond works for an oil company and Barbara is a substitute teacher.

**Thomas K. Jaeger** and **Brenda Riley Jaeger** ('74) live in Mountain Grove, Mo. He is director of elementary education and elementary school principal at Mountain Grove R-III School and she is director of Kids Who Can Daycare Center Inc. They have a daughter, Sara Marie.

**Gary E. Nichols**, Wheeling, Mo., is a physical education teacher, grades K-12, a junior and senior high driver education and health teacher, and coaches softball, basketball and track. His wife, **Denna Fay Swan Nichols**, received a master's degree in teaching of reading from NMSU in August 1984, and is a third and fourth grade teacher. They have a daughter, Patricia Louise, and a son, David Gary.

**J. R. Latta** is living in Kansas City, Mo., where he is a district sales manager for Pabst Brewing Co.

**William T. Burke** of Port St. Lucie, Fla., is pursuing the establishment of a new business in southern Florida.

**James E. Ulry**, an art instructor at Cottey College, is living in Nevada, Mo. His wife, Ann, is a business education teacher in Walker, Mo.

**Gary A. Blinkinsop** and **Paula Hartz Blinkinsop** ('74) are residing in Davenport, Iowa. He is an industrial arts teacher in the Davenport schools and she is a speech and language clinician for Mississippi Bend Area Education Agency. They have a son, Eric Andrew.

**June Stukenberg Hand**, Victor, Iowa, is an elementary principal at the HLV Community School. Her husband, **Robin L. Hand** ('73), is a regional sales manager for DeLong Sportswear in Grinnell. They have a daughter, Gina.

**Joleen Musgrove Davis** and **Charles L. Davis** ('76) live in Joplin, Mo. She is a second grade teacher at Joplin R-8 Schools and he is a certified public accountant with the firm of Myers, Baker, Rife and Denham in Webb City, Mo. Their son, Matthew Charles, was born in 1984.

**James A. Hamilton** is living in Walla Walla, Wash., where he is a police officer.

**Kent G. Baker** of Urbandale, Iowa, is an assistant treasurer for Hawkeye-Security Insurance Co. His wife, Bobbette, is an insurance agent. They have a son, Richard, and a daughter, Brandi.

**Douglas and Charol Eitel Clermont** live in Kirkwood, Mo. He is a student and she is a registered nurse. They have two children, Kesha and Lara.

## '73

**Ardith A. Syfert** is living in Trenton, Mo., where he is principal of Rissler Elementary School. His wife, Linda, is a student. They have two sons, Adam and Andrew.

**Audrey Stanek Roth**, husband, Frank, and sons, Frankie and Danny, are living in Hawk Point, Mo. Audrey is a housewife and Frank is a diesel mechanic.

**Joan C. Fromme** of St. Louis, is a teacher in the St. Louis County Special School District. She received a master's in education from the University of Missouri-St. Louis in December 1984.

**Danny L. Clark** and **Peggy J. Clark** ('82) of Kirksville are the parents of a son, Daniel Forrest, born Aug. 16, 1984. They have two other children, both daughters, Margaret Nicole and Melissa Renee. Danny is employed in the production maintenance department at Hollisters Inc.

**Rick L. Elkin**, wife, Cathie, and children, Christopher, Cari and Timothy are residing in Norwalk, Iowa. Rick is a division manager for Bard Critical Care, Great Plains.

**William L. Rubel** of Davenport, Iowa, is a general supply specialist, U.S. Army Civilian Headquarters, AMCCOM, Rock Island Arsenal, Ill. He has a son, Gary Lawrence, and a daughter, Katherine Ann.

**Kathleen M. Lenzen**, an English teacher at Mundelein High School, is residing in Mundelein, Ill.

**Crystal Carr James** and **Richard L. James** ('76) are living in Ottumwa, Iowa. She is a chapter I reading teacher in Ottumwa and he is a seventh grade science teacher in Albia Middle School. They have two sons, Christian Carr and Ryan Reed.

**Mark W. Rugeberg** is an assistant high school principal. He and his wife, Mary, and son, Michael, are residing in Savannah, Mo.

**J. J. Erlbacher** is living in Indianapolis, where he is a regional merchandiser for Target.

**Beth Gutekunst Austin**, a student, lives in Highland, Calif. Her husband, John, is self-employed in Concrete Fence Mfg. Their children are Andrew Taylor and Ashley Beth.

**Vicki Marshall Ward**, husband, Wayne, and son, Matthew, are living in Columbia, Mo. Vicki teaches speech communications and theater at Jefferson Junior High School and Wayne is a draftsman.

**Craig E. Derby** is a senior technical writer at John Deere Des Moines Works. He and his wife, Marcia, and children, Erin Lynn and Ryan Andrew, are residing in Johnston, Iowa.

**Diane Keller King**, Milo, Iowa, is a high school EMD teacher. Her husband, Tom, is an AEA speech clinician. Her children are Allan P. Keller and David C. Keller.

**Daniel L. Larson** of Johnston, Iowa, is a supervisor of systems and programming. His wife, Donna, is a dietitian. They have two daughters, Krista, and Katie, born in 1984.

**Alan L. Lander**, wife, Donna, and daughters Heather and Hollie, are residing in Des Moines, Iowa. Alan is substitute teaching in the Des Moines School District and Donna is a registered nurse for The Blood Center.

**Robert L. Price** received a master's in religion from Wesley Biblical Seminary in 1984. He and his wife, Lavon, are living in Redwood Falls, Minn., where he is pastor of the Redwood Falls Evangelical Church. Their children are Victoria Robinson, Robert Price Jr. and Deborah Flickinger.

## '74

**Peggy Garrett Crist** and **Michael R. Crist, D.O.** ('75) live in Brookfield, Mo. She is a substitute teacher and he is a physician in family practice. They have four daughters, Melissa, Amy, Shelli and Megan, who was born in 1984.

**Eric J. Forrest** is living in Belleville, Ill. He is in the 528th Air Force Band at Scott Air Force Base.

**Glenn L. Shepard**, wife, Janet, and children, Katie and Kyle, are residing in Cape Girardeau, Mo. Glenn is a district manager for American Family Mutual Insurance Co.

**Thomas W. Eastman, D.O.**, and **Colette Beale Eastman, D.O.**, are physicians and living in Poway, Calif. Their sons are Jeremy Thomas and Jonathan Garland.

**Giles R. Pugh** is an administrative specialist for the U.S. Army at Fort Bragg, N.C. His home address is Palmyra, Mo.

**Alfred L. Herrman**, a territorial manager for Staab Battery, and wife, Stephanie, a registered nurse, are living in Richmond Heights, Mo. They have a daughter, Barbara, and a son, David.

**Martha Jo Spraggins Unruh** and husband, Dr. Gregory L. Unruh, of Carthage, Mo., are the parents of a daughter, Morgan Jayne, born May 14, 1984. They also have a son, Joseph Chase.

**Dewight (Tete) and Nancy Stone Long** are residing in Davenport, Iowa. He is a special education consultant and she is a first grade teacher. They have two daughters, Erin and Jennifer.

**Pharis L. Watt** is an agent for Prudential Insurance Co. He and his wife, **Laurie Ray Watt** ('73), a secretary for the Sioux Falls School District, and sons, Jason and Eric, are living in Sioux Falls, S.D.

**Walter C. Clermont** of Kirkwood, Mo., is a medical photographer. His wife, Garland, is a registered medical assistant. They have a daughter, Lorraine, and a son, William.

**John and Cindy Streb Godlove** live in Marion, Iowa. Their children are Rachel Lynn, Ross Curtis and Lindsey Renee. John is a controller for Kwik-Way Manufacturing and Cindy is a homemaker.

**Mark L. Thompson**, Kirksville, is owner/pilot of Air Charter Company and a district sales manager for Garst Seed Co. His wife, **Melinda Mitchell Thompson**, is a substitute elementary teacher. Their son, Grant, was born in 1984. They also have three other children, Chad, Inga and Tony.

**Montgomery (Monte) A. Morris and Jane Shermuly Morris** ('75) are residing in Kahoka, Mo. He is a science teacher and she teaches English at Clark County R-I High School. Their children are Whitney and Laef.

**Dennis and Sharon Stoker Veach** of Columbia, Mo., are the parents of a daughter, Jennifer Leigh, born Aug. 14, 1984.

**Cheryl Bindseil Morrow**, husband, R. Jeffrey, and sons, Travis Michael and Todd Matthew, are living in Kirksville. Cheryl is a mathematics teacher at Kirksville Junior High School and Jeff is a vice president at the Commerce Bank.

**Ricky J. Barker** is an instructor at Washburn University. He and his wife, Betty, reside in Topeka, Kan.

**Thomas E. Bueker**, Ankeny, Iowa, is supervisor of field services in the marketing department at John Deere Des Moines Works. His wife, Victoria Rose, is an elementary teacher in Ankeny Community Schools.

**James H. McClintock** and wife, Marilyn, of Novinger, Mo., are the parents of a daughter, Susan Elizabeth, born Aug. 3, 1984. They have four other daughters, Holly, Andrea, Janna and Jill. James is a salesman for the Office Center in Kirksville.

**Mark W. Johnson**, a fourth grade teacher, is residing in Liberty, Mo.

**Michael E. Leech**, Beaverton, Ore., is a physical security specialist with the General Services Administration/Federal Protective Service.

**Leroy (Bill) Searcy**, Kirksville, is an assistant professor of reading at NMSU. His wife, **Cynthia Gordinier Searcy**, is a sixth grade teacher at Kirksville Upper Elementary School. They have two daughters, Bethany Lynne and Amanda Kate.

**I. Paul Schuster**, wife, Sandra, and children, Kevin, Kari and Todd, are residing in Tulsa, Okla. Paul is a learning disabilities teacher and Sandra is a registered nurse.

**Jerry and Jeanne Thurman Cochran** are living in Eldon, Mo. He is a physical education teacher and basketball coach and she is a seventh grade mathematics teacher. They have three children, Jeffrey, Jason and Julie.

**Dr. Wayne P. Bailey**, an assistant professor of computer science at NMSU, has been selected as an Outstanding Young Man of America for 1984. He and his wife, **Donna Tague Bailey** ('76), also on the mathematics faculty at NMSU, and son, Brennan, are living in Kirksville.

**Pamela Crutcher Benner**, husband, Van, and daughter, Tara Marie, are living in Moberly, Mo. Pam is an elementary special education teacher and Van is a sales driver for Anheuser Busch.

**Roy B. Heise Jr.**, is an electrical engineer at Monsanto in Sauget, Ill. He and his wife, **Karin Burnham Heise**, a homemaker, and children, Jennifer Lynn and Jonathan Roy, are residing in St. Charles, Mo.

**W. William Valbracht** and **Janice Plant Valbracht** ('76) live in Florissant, Mo. He is employed in the training department of Arabian American Oil Company and she is a housewife. They have a son, David, and a daughter, Lauren.

**Philip G. Schmitz** is living in Quincy, Ill., where he is an office manager for Scholfield Veterinary Supply. His wife, Nancy, is an LPN. They have three children, Amra, Audrey and Adriane.

**Michael S. Wiesner**, a self-employed oil jobber, is vice president of Wiesner Oil Co. Inc. His wife, **Sharon Collins Wiesner**, who was an accounting manager for Wicks Homes Inc., is now a housewife. They have a daughter, Michelle.

**Johanna Johnson** is an elementary counselor. Her home address is Davenport, Iowa.

**Linette Stelplugh Ayers** and husband, J. Michael, are residing in Kansas City, Mo. She is an education specialist for Lifewise at St. Luke's Hospital and he is manager of Mrs. Winners Restaurant in Overland Park, Kan.

**Patricia M. Grovert** of Schaumburg, Ill., is a high school special education teacher in District 211, Hoffman Estates, Ill.

**Wanda Haley Burns**, Trenton, Mo., is a third grade teacher. She received a master's degree from NMSU in August 1984. She has two children, Tawnia and Jami.

**Linda Pinson Shultz** and husband, Roger, of Edina, Mo., are the parents of a daughter, Kyla Rochelle, born Oct. 29, 1984. They have two other children, both sons, Dustin and Tyson. Linda is employed at Citizens Bank in Edina and Roger is with Knox County Stone Co.

**Lawrence J. Mihalevich and Christine Smith Mihalevich** ('76) live in Mt. Pleasant, Iowa. They have a daughter, Jamie, and a son, Nickolas. Larry is a pharmacist and assistant manager of K-Mart Pharmacy in Burlington and Chris, a former elementary teacher, is a homemaker.

**Gary V. Foster**, wife, Marilyn, and son, Matthew, are living in Des Moines, Iowa. Gary is a sheet metal estimator for the Waldinger Corp.

**Ellis Lee Schoonover II**, Clarence, Mo., is a cashier at Clarence State Bank. His wife, **Sharon Kay Totten Schoonover**, is a junior high mathematics teacher at Shelby County R-IV School. They have a son, Nathaniel Lynn, and a daughter, Dana Michelle.

**Rodney L. Libby and Jayne Reed Libby** ('76) live in Marceline, Mo. He is a general contractor and she is a housewife. Their daughter, Rachel Ann, was born in 1984. They have one other daughter, Amy Michelle.

**Marvin L. DeLong** of Sequin, Texas, is manager of an automotive machine shop. His wife, **Loretta Becker DeLong** ('76), a chapter I teacher, received a master's in education degree from Southwest Texas State University in 1984. Their children are Cary and Pamela.

## '76

**Michael E. Orscheln**, Florissant, Mo., is an office manager of a data entry facility. His wife, Marilyn Crites Orscheln, who attended NMSU, is a housewife. Their sons are Michael Scott and Benjamin David.

**Patricia Farmer Spencer and V. Kevin Spencer** ('81) of Orlando, Fla., are the parents of a son, Mark Alan, born Sept. 13, 1984. They also have a daughter, Sara Jean.

**Janice K. Lehr** of Tulsa, Okla., is supervisor of general accounting with Facet Enterprises Inc. She has a daughter, Juanita Marguerite, and a son, Aaron Matthew.

**Chuck A. Rentschler** is residing in Mexico, Mo., where he is a special accounts officer with Community Federal Savings and Loan Association.

**Sheila L. McCartney** is a business and computer science teacher on an air base near Adana, Turkey. Her address is APO New York.

**Suzette Heiman**, Holts Summit, Mo., is director of community relations and development at St. Mary's Health Center in Jefferson City. Her husband, Terry, is director of agri-education for the State Department of Education. They have a son, John.

**Rebecca Ann Dance Peck**, Liberty, Mo., is manager of internal audit with Kansas City Power and Light. Her husband, William, is a buyer for Dit-Mco. Their twins, Lindsey Nicole and Jeremy Todd, were born in 1984. They also have one other child, a son, Brandon Paul.

**Michael and Ingrid Muller Galusha** are residing in Fort Worth, Texas. He is a police officer and she is a teacher. They have a daughter, Annette Vera.

**Jerry L. Wait, D.O.**, is an emergency room physician at Delta Community Hospital in Sikeston, Mo.

**Terry D. Lunsford** is living in Independence, Mo., where he is an administrative assistant to the vice president of accounting and personnel at Centerre Bank.

**Kent T. Adamson** of Mesa, Ariz., is an engineering project manager with Intel Corp.

**David F. Murray and Melody Senf Murray** ('79) are residing in Trenton, Mo. He is a teacher and she is director of special education, both in the Trenton R-IX School District. Their daughter, Suzanne, was born Feb. 14, 1984. They have one other child, a son, Jeffrey.

**Steven A. Bettis** and wife, Christine, of Davenport, Iowa, are the parents of a daughter, Ashley Anne, born Nov. 26, 1984. Steve is manager of Slagle's Super Market is Davenport and Chris is developer and trainer of personnel at the Davenport Bank and Trust.

**Stan Elliott** is a biology teacher at Lee's Summit High School. He and his wife, Barb, an elementary teacher, are living in Lee's Summit, Mo.

**Patrick A. Kendrick and Joyce Betrels Kendrick** ('78) live in Bethany, Ill. Joyce is a speech/language pathologist.

**Karen Dye Burch** received a master of science in accounting from NMSU in August 1984. She and her husband, Ronnie, and sons, Ryan and Cody, are living in Kirksville. Karen is an accounting instructor at NMSU.

## '77

**Capt. Steven R. Blunck**, Albuquerque, N.M., is a ground operations plans officer for Command Control Communications Countermeasures, JTF.

**Randall (Randy) D. Rogers** of Glendale, Ariz., is an engineer with Sperry Flight Systems.

**Richard O. Vigil II and Jeanne DeLaquig Vigil** ('78) are residing in St. Charles, Mo. He is a student at Flo Valley Community College and she is self-employed. They have one child, Gabrielle, born Jan. 12, 1983.

**Daniel D. Whitworth** lives in Jinoplin, Mo., where he is an attorney with Myers, Taylor & Whitworth. His wife, Debra, is a fifth grade teacher in Carterville, Mo.

**Marc W. Romine**, Holts Summit, Mo., is an environmental education specialist for the Department of Natural Resources. His wife, **Cathy Westfall Romine** ('80), is a registered nurse. They have two sons, William Lee and Jerod Daniel.

**Charles W. Zwicky** and Julie Seaman Zwicky, who attended NMSU 1974-1977, are living in Everett, Wash. He is director of bands at Mariner High School and coordinator of instrumental music at Mukilteo School District and she is a documentation specialist at Rainier National Bank.

**Marin Church Justice and Stephen F. Justice, D.O.**, ('78) are living in Clarksville, Mo., where she is a teacher and he is a physician. They have one daughter, Leslie Ann.

# update

## Military Science

Northeast's ROTC program is now the fifth largest in the nation in total enrollment, numbering 412 cadets.

"We have a good range of student showing a broad range of skills," Lt. Col. Bruce T. Caine, head of the Division of Military Science, said. "The quality of men and women over the past several years has shown considerable balance as far as requirements go."

One of the reasons for the success of the ROTC program is an extensive scholarship program which has drawn more cadets into the ranks.

"The benefits of the military scholarship program are outstanding," Sabrina Belton, a sophomore cadet, said. "The biggest drawing for me was the scholarship. It took the burden of paying for college off my parents."

Vicky Willis, a senior cadet, said she also enrolled in ROTC to help pay for school. "They (ROTC) would help put me through med-tech school. And I wanted to travel and meet new people," Willis said.

Another reason for ROTC's growth is the increasing number of women enrolling in the program.

"The women are giving more consideration to a career in the military even if it's a background for leadership and management," Caine said.

"Many women are also combining the ROTC program with their major fields. "I hope to keep my life exciting by traveling and experiencing the nursing career through the military," Belton said.

Willis said the males in ROTC treat the women equally. "Everyone is really serious about what they do. They take their position to heart," Willis said.

"I feel I am more respected when I am in uniform," Belton said. "It's a neat feeling."

Willis said, "You forget about your fingernails and makeup and you go out to do really physical things. You basically live like a man."

Willis and Belton attend physical training sessions twice a week and a leadership laboratory once a week. Willis has also completed a six-week advanced camp.

Caine said, "The women are realizing the long-range benefits of the program. I feel there is no better challenge...nothing more exciting than the Army."

**Lu Jean Miller**, Knoxville, Iowa, is a teacher at Twin Cedars High School.

**Thomas B. Keller** of Silex, Mo., received a master's in education degree from the University of Missouri-St. Louis in 1984. He is an LD/BD teacher at Lincoln County R-1 Schools. His wife, **Teresa Miller Keller**, teaches social studies, also at Lincoln County R-1. Their son, Nathaniel Thomas, was born Sept. 2, 1983.

**Joseph and Mollye Hawks Hays** are residing in Lynchburg, Va. He is a communications system consultant with AT&T Communications and she is a housewife. Their daughter, Rebecca Leanne, was born Aug. 29, 1984. They have one other daughter, Emily Katharine.

**Mark R. Cook**, a purchasing agent, and wife, Janice, a dental assistant, are living in Loves Park, Ill. Their son, Jared, was born in 1984.

**Farzad (Fred) and Mary Schwendemann Ganjani** are residing in St. Peters, Mo. He is an accountant with a CPA firm and she is a computer programmer.

**Mary Kay Tuggle Jones** of Jefferson City, Mo., is a secretary at Lincoln University. Her husband, **Kenneth E. Jones, D.O. (78)**, is a radiology resident at Still Osteopathic Hospital. They have a son, Austin Luel.

**Mary Ann Templeton** is living in Wichita, Kan., where she is a novice in the religious community of Adorers of the Blood of Christ.

**Mary Ann Templeton** is living in Wichita, Kan., where she is a novice in the religious community of Adorers of the Blood of Christ.

**Karma Houston Hughes** and **Stanley C. Hughes (80)** reside in Chandler, Ariz. She is a junior high teacher/coach and he is with Phoenix Public Housing Association.

**David P. Bahr** is manager of Wright's Sight & Sound in Kirksville. His wife, **Sandra H. Bahr (80)**, received a master's in science education from NMSU in August 1984, and is a science teacher at Kirksville High School. David, Sandi and son, Justin, are living in La Plata, Mo.

**Janice E. Shriver** of Milan, Mo., is a vocal music teacher, grades K-12. She has a son, Lloyd.

**Rodney C. Rawlings** and **Jane Brockland Rawlings (79)** reside in Fargo, N.D. He is a sales representative and she is a homemaker. They have two daughters, Danielle Nicole, born in 1983, and Jessica Marie, in 1984.

**David M. Rozendaal**, wife, Kim, and daughter, Amanda Sue, are living in Higginsville, Mo. Dave is a production manager at Supersweet Feeds.

**Max W. Richardson** lives in Halifax, Nova Scotia, Canada, where he is a second-year law student at Dal Housie University Faculty of Law. His wife, Mary, is a store manager.

**Bill (Rocky) Moore**, El Segundo, Calif., is an assistant basketball coach at California State Dominguez Hills in Carson.

**Carol Krewson Hollingsworth** and husband, Glen, are residing in Hoffman Estates, Ill. She is a registered nurse and he is a data base manager at Northrop Corp. They have a son, Eric, and a daughter, Kristen, born in 1984.

**Capt. Daniel J. Comegys** and wife, Debra, of St. Louis are the parents of a daughter, Melissa J., born June 10, 1984. They have two other children, both sons, Tanner and Jason. Daniel is a company commander with the U.S. Army Recruiting Company in Arnold, Mo. Debra is an LPN.

**Joseph and Ruth Harrington Hughes** of Macon, Mo., are the parents of a son, Jacob Paul, born Sept. 25, 1984. Joseph is a buyer for Westlake's Ace Hardware and Ruth is a housewife.

**Neil A. Ralston** is a Kiplinger Fellow at Ohio State University. He and his wife, Janette, a teacher, are residing in Columbus, Ohio.

**Ricki C. Trosen**, Kirksville, is an academic adviser at NMSU. Her husband, Wally, is a law student at the University of Missouri-Kansas City. Their daughter, Kelly Christine, was born Sept. 17, 1984.

**Robert and Alta Freels Nielsen** are living in Kirksville. He is a student at Kirksville College of Osteopathic Medicine and she is a cashier in the business office at NMSU.

**Richard and Ellen Wente Hannon** are residing in Germany. He is a captain in the U.S. Army and she is a special education teacher. Their son, Justin, was born June 22, 1984. They have an APO New York address.

**David and Barbara Lykins Crooks** of Kirksville are the parents of a daughter, Jennifer Lee, born July 31, 1984. They have one other daughter, Stephanie Lynn. David is an environmental sanitarian with the Adair County Health Department and Barbara is a registered nurse at Grim-Smith Hospital.

**Alfred and Nancy Grimm Saunders** are residing in Overland, Mo. Al is a medical technologist at Barnes Hospital. Nancy received her master's in business administration from Lindenwood College in 1984 and is an applications analyst for Apex Oil. Their daughter, Kristin, was born in 1984.

'79

**Robi M. Rosenfeld, D.O.** is a physician in preventive medicine. He and his wife, Galit, a student in architecture, are residing in Clearwater, Fla.

**David R. Whan** is living in Paris, Mo., where he is an agriloan officer at Paris National Bank.

**Terry Shapiro McDonald**, a housewife, lives in Thelma, Ky. Her husband, William (Mike) McDonald, D.O., who attended NMSU, is a physician at Magoffin County Clinic.

**Dan G. Faucett** is a controller. He and his wife, Gayle, are living in Arnold, Mo. Their daughter, Christie, was born in February 1984.

**Marcia Y. Cramer** of Columbia, Mo., is in administrative services/fabrications with State Farm Insurance Companies.

**Donald E. Boyer** and **Jolette Lindberg Boyer (80)** live in Elk Horn, Iowa. He is a high school industrial arts teacher and she is employed at Family Day Care. Their daughter, Erin Rebecca, was born in 1984. They also have another daughter, Randa Marie.

**Rebecca Neff Van Delft** is a special education teacher at Atlanta, Mo. She received a master's degree in special education from NMSU in August 1983. Her husband, **Leonard A. Van Delft (83)**, is a ford service technician. They have two children, Hilary and Erik.

**Stratton John Shannon, D.O.**, is a U.S. Navy general medical officer on the USS Dwight D. Eisenhower stationed in Norfolk, Va. He and his wife, Peggy, have a daughter, Katie, and a son, Stratton, who was born in 1984. Their address is Cedar Falls, Iowa.

**Michael V. Meyer** and wife, Shelley, of Bowling Green, Mo., are the parents of a son, Blakeley James, born Aug. 28, 1984.

**Michael and Linda Burchett Petricca** are living in Sac City, Iowa, where Mike is chief of police. They are the parents of two sons.

**Margaret A. Wilson, D.O.**, received an award in August 1984, in St. Louis honoring outstanding service and performance for the Public Health Service. She is in general practice at Mound City, Kan.

**Michael W. Hagen, D.O.**, of Lakeview, Mo., is a physician in family practice.

**Kevin B. Harrison** and **Cathy Colton Harrison (84)** are residing in Lee's Summit, Mo. He is a mathematics teacher and basketball coach at Lee's Summit High School and she is a teacher at St. Mary's High School in Independence.

**Randall E. Halley, D.O.**, and wife, Barbara, live in Springfield, Mo. He is a physician and she is an office manager.

**Lee Ann Howard**, a management specialist for Peabody Coal Company, is residing in Clayton, Mo.

**Patricia Forbis Motter** and husband, Brent, of Kirksville are the parents of a daughter, Melinda Brooke, born Aug. 28, 1984. Patricia is a second grade teacher at Washington School and Brent is self-employed.

**Barbara Wroblewski Hauck** and **Ethan C. Hauck ('80)** are living in New Boston, Mo. She is an assistant professor of nursing at NMSU and he is an English teacher and coach at Brookfield. Their daughter, Lindsay Rae, was born Aug. 27, 1984.

**David W. Broadfoot** of Honolulu is a sales representative.

**Steven V. Scalise, D.O.**, Jacksonville, Fla., is an emergency room physician at the Navy Hospital, Naval Air Station. His wife, Barbara, is a registered nurse. Their son, Michael Anthony, was born April 23, 1984.

**Christopher O. Grant** and wife, Rhonda, of Kirksville are the parents of a son, Joshua Owen, born June 28, 1984. They have one other child, a daughter, Tracy Lee. Christopher is assistant manager of Thousand Hills Restaurant.

**Bonnie K. Baker**, Mission, Kan., is a sales representative for Agency Rent-A-Car.

**Cary D. Engle** and **Susan Brennem Engle ('80)** of Kirksville are the parents of a daughter, Jennifer Elizabeth, born Nov. 29, 1984. Cary is manager of DeRoscar Flowers & Gifts in Kirksville. Susan, who received a master's degree from NMSU in August, 1984, is a junior and senior high English teacher at La Plata R-3 Schools.

**Teresa (Teri) Pieper Lancaster**, Otumwa, Iowa, is a research assistant at Indian Hills Community College. Her husband, Mark, is manager of Lancaster Oil Company Stores. They have one child, Robin Rene.

**Frederick L. Couch** is a data analyst with the Iowa National Guard. He and his wife, Anita, are living in Polk City, Iowa. Their daughter, Natalie Eva, was born in 1984. They also have a daughter, Nicolette Ann.

## '80

**Jeff P. Burger** and **Julie Wilson** were married June 2, 1984. They are living in Clinton, Ill., where he is an industrial arts teacher and coaches golf and baseball at Clinton High School. She is a graduate of Illinois State University and a part-time teacher in the Clinton School District.

**Victoria Biondo Skrob**, Fenton, Mo., is a benefits administrator for Apparel Industries Inc. Her husband, Mark, is a real estate agent with Century 21.

**Timothy D. Ernst** received a master's in social science from NMSU in August 1984. He is living in Kansas City, Mo., where he is a law student at the University of Missouri-Kansas City.

**Timothy Mark Schwegler** and **Nancy Jane Witte ('84)** were married June 30, 1984, in Kirksville. Tim is a TPTAI at NMSU and Nancy is a teacher in La Plata Elementary School. They are living in La Plata, Mo.

**Janet Bell Vosler** and husband, Scott, of Eaton, Ohio, are the parents of a son, Matthew Scott, born Sept. 17, 1984. Scott is a 1982 graduate of Kirksville College of Osteopathic Medicine and is practicing at the Vosler Clinic in Eaton.

**Barbara C. Gannon** of Maryland Heights, Mo., is an instructional designer/writer with McDonnell Douglas Health Services Company in St. Louis.

**Gary L. LeMaster** and **Kim Broyles LeMaster ('81)** reside in St. Ann, Mo. He is a branch office administrator with Data General and she is a shipping processor.

**Carol McLain Hutchinson** received the doctor of osteopathy degree from Kirksville College of Osteopathic Medicine in 1984. She was also commissioned a captain in the U.S. Army. She and Jerry H. Hutchinson, a senior at KCOM, were married in June 1984. Dr. Hutchinson is interning at Tuscon General Hospital in Tucson, Ariz.

**Gregg and Leigh Ann McCarrroll Williams** are living in Independence, Mo. He is a teacher at Belton High School and she is a supervisor of accounting for Farmland Industries.

**Patti Michelle Williams** and **Daniel H. Bloemke** of Washington, Mo., were married July 15, 1984. She has been a teacher at Washington Junior High School the past three years. He is a graduate of Central Missouri State University and is a merchandising manager of Six Flags Over Mid-America.

**Julie Breiten Douglas** and **Michael J. Douglas ('82)** reside in St. Louis. She is a second grade teacher and he is employed with A. G. Edwards.

**Thomas J. McCabe**, manager of Citicorp Services Inc., is living in Mt. Prospect, Ill.

**Jerry D. Hill** and **Donna Spangler Hill ('84)** of Trenton, Mo., are the parents of a son, Kyle Andrew, born Aug. 18, 1984. Jerry is manager of Quiktrip.

**Mark E. Smith** has been promoted to assistant manager of Jack's new store in Cedar Rapids, Iowa, which is the company's largest store. He is living in Marion, Iowa.

**Peggy Ann Dochterman**, Makakilo, Hawaii, is an operations officer for shore organizational effectiveness teams at Pearl Harbor Naval Station.

**Jennifer Sparks Ehrsam**, a sixth grade teacher, lives in Greenfield, Iowa. Her husband, David, is a salesman/bookkeeper for Ehrsam Implement Co.

**Lea Suzanne Kluesner**, a banking officer with Mercantile Trust Company in St. Louis, is residing in Hazelwood, Mo.

**John Jay Benson** and **Alice Kay Norman ('83)** were married Sept. 8, 1984. Jay received the juris doctor degree from the University of Missouri-Columbia in May 1984, and has joined the law office of Edward L. Campbell in Kirksville. Alice is a dental assistant.

**Christine Ann Koenig** and **James M. Keown** were married June 9, 1984. They are residing in Columbia, Mo., where she is a registered nurse-assistant unit supervisor 3N at Columbia Regional Hospital. He is a graduate of the University of Missouri-Kansas City School of Pharmacy and is a staff pharmacist at Boone Hospital Center.

**Bruce A. Poese** is an analytical chemist at Harry Diamond's Labs. His wife, **Debra Brockschmidt Poese ('81)**, received a master's in mathematics from the University of Maryland in May 1984, and is a part-time mathematics instructor at Montgomery Community College and the University of Maryland-College Park. They are residing in Wheaton, Md.

**Greg L. Hagensick** and **Carol Veatch Hagensick ('84)** are living in Washington, Iowa.

**Beth Ann Craig** and **Mark Caldarello** were married Sept. 22, 1984. She is employed by Perfumer's Workshop Ltd., New York, and he is a pipefitter for Jacobson Mechanical Contractors. They are living in Lee's Summit, Mo.

**Theresa Hyde Dunham**, Kirksville, is a registered nurse in intensive care at Grim-Smith Hospital. Her husband, John, is a registered nurse on the medical floor at Kirksville Osteopathic Hospital. Their son, Alex Edward, was born July 9, 1984.

**Schelly Kolb Smith** and husband, Al, of Kirksville are the parents of a daughter, Stephanie Mischell, born July 9, 1984. Schelly is a teacher in Novinger and Al is a used car manager at Jim Robertson Chevrolet.

**Carlene K. Hesckie**, St. Ann, Mo., is an associate business programmer at McDonnell Douglas. She received a bachelor of science degree from NMSU in 1983.

**Pamela Goodwin Richmond** and husband, Michael, of Kirksville are the parents of a daughter, Brandi Nicole, born July 8, 1984. Pam is a first grade teacher in Hurdland and Mike is a life insurance agent with the London Company.

## '81

**Sharon Putnam**, Kirksville, is a registered nurse at Dialysis Clinics Inc.

**Michael and Mary Ann Youse McCarty** are residing in Walnut Creek, Calif.

**Craig S. Towbin** of Tampa, Fla., is a subrogation collector for Progressive Insurance Co.

**Nancy Delehanty Weber** is a secretary in the Division of Nursing at NMSU. She and her husband, Eldon, an electrician, and daughter, Kelly Lynn, are living in Kirksville.

**L. Susan Paris Norris**, a fifth grade teacher in Chillicothe R-II Schools, lives in Chillicothe, Mo. Her husband, Mark, is a salesman for Minnick Electrical Wholesale. Their son, Joshua Lee, was born Aug. 10, 1984.

**Joni A. Spencer** is residing in Tampa, Fla., where she is in media relations for the College of Fine Arts at the University of South Florida.

**Mary Alice Donovan**, Cedar Rapids, Iowa, is a Christian educator at St. Paul's United Methodist Church. She has a daughter, Melinda, and a son, William.

**Barry W. Bernhardt** received a master's in instrumental music from NMSU in August 1984. He is living in Long Beach, Calif., where he is an assistant director of bands at California State University. His wife, Laurie Hammond Bernhardt, who attended NMSU, is a telephone operator for the city of Long Beach.

**Nicholas W. Biggs** of Iowa City, Iowa, is a location manager. His wife, Shelly, is an office manager.

**Janelle L. Potts**, Kirksville, is a kindergarten teacher at Milan C-2 School.

**Cheryl Tietsort Roemer** of Columbia, Mo., received CDP certification from the Institute for Certification of Computer Professionals in June 1984. She is a programmer/analyst with Boone Hospital Center. Her husband, Kenneth, is manager of distribution with the U.S. Postal Service.

**Gordon A. McClimans II**, a laboratory and nuclear medicine technologist, lives in Arlington, Texas. His wife, Dana, is a neurophysiology technologist.

**Anita Ahrens Koenig** and husband, Karl, are residing in Wichita, Kan. She is a fourth grade teacher in Newton and he is an architect for Botham and Griffith.

**Terry N. Clark** and **Lisa Reed Clark ('82)** of Pattonsburg, Mo., are the parents of a son, William Daniel, born Sept. 27, 1984. Terry is employed at M.F.A.

**Jeffrey A. Daniels** is a teacher in the Adair County R-II School District. His wife, Jennifer, is employed at Kirksville Osteopathic Health Center. Their son, Andrew Larry, was born Sept. 28, 1984. They are living in rural Green Castle, Mo.

**Albert and Mary Nieman Bouman** live in Jennings, Mo. He is an accountant and she is a claims representative with ADP.

**Ann L. Hessler**, St. Louis, is employed with the St. Louis Police Department. Her daughters are Janet Hessler Niehaus and Carole Ann Hessler Rubin.

**Chad C. Schatz** and **Paula Judd** were married Aug. 30, 1984. They are residing in Kirksville where Chad is a photographer-reporter for The Daily Express.

**Elizabeth (Betty) Shoush Christman**, home economics teacher at Atlanta C-3 High School, was named Teacher of the Year by the Community Teachers Association in 1984. She and her husband, Jeff, live in Kirksville.

**Susan Waggoner Barton** and husband, **David D. Barton ('82)**, of Kirksville are the parents of a son, Joshua David, born July 6, 1984. They have one other child, a daughter, Heather Marie. David is a production supervisor at Hollisters Inc.

**Patricia Carter Holman**, a third grade teacher, is living in Parris Island, S.C. Her husband, Richard, is a sergeant in the U.S. Marines.

**Gayla Jean Thurman**, Neosho, Mo., is continuing her studies in Christian education and art at Ozark Bible College. Her plans are to teach in Christian schools when she completes her degree at Ozark.

**Martha Hartmann Hasting** received a master of science in mathematics from St. Louis University in 1984 and is presently an instructor and student at the University. She and her husband, Kevin, a CPA, live in St. Louis.

**David D. Kennedy**, an attorney, is residing in Oklahoma City. He received a juris doctorate degree from the University of Oklahoma in 1984.

**Barbara Jean Anderson** received a master's degree in special education from NMSU in August 1984 and is a special education teacher at Pleasant Hill Primary School in Pleasant Hill, Mo. She is residing in Harrisonville, Mo.

**Andre M. Willis**, wife, Lori, and son, Ryan, are living in Jefferson City, Mo. Andre is supervisor of school finance and Lori is an information officer at Lincoln University.

**Thomas G. Bryant Jr.**, Beacon, N.Y., is a programmer with IBM.

**Rebecca L. Hendrickson** is living in St. Louis, where she is a police officer in St. Louis County.

## '82

**Brigitte St. Clair Anthony** of Columbia, Mo., is a senior secretary. Her husband, Mark is a mailroom copy clerk.

**David L. Sagaser** is living in Springfield, Mo., where he is head resident of Freudenberg House, Department of Housing, at Southwest Missouri State University.

**Jalene M. Jameson**, Kirksville, is a student intern in Sports Information at NMSU.

**Gerard R. Behnen Jr.** and **Ginger Winder Behnen** are residing in Olathe, Kan. He is director of administration for Aldi Inc., and she is a claims adjuster.

**Regina M. Kahn**, a security clerk with the Mississippi Army Ammunition Plant, is living in Bay St. Louis, Miss.

**Ron Gaber** and wife, Elsie, are residing in Kirksville. He is director of residence life and she is a freshman counselor at NMSU.

**Stephen and Lana Gardner Morrissey** live in Grand Prairie, Texas. Steve is a joint operations accountant for Enserch Exploration Inc., and Lana is in customer service with the art department of Blanks Engraving.

**Steven J. Gasparovich**, Jacksonville, Fla., is a LTJG in the U.S. Navy. He is flying with Patrol Squadron Five. His wife, Kim, is a student at the University of North Florida.

**Georgia Lauten Zimmerman** of St. Joseph, Mo., is a registered nurse and a graduate student at the University of Missouri-Kansas City School of Nursing. She received a bachelor of science in nursing from NMSU in May 1983. Her husband, Bill, is a CPA.

**Anita Fashing Kiska**, husband, Gerald, and daughter, Christine, are living in Bloomington, Ill. Anita is a computer programmer for State Farm Insurance.

**Kelly Keep Wilson** and **Steven P. Wilson** ('84) are residing in Cantril, Iowa. She is a housewife and he is a mathematics teacher at Fox Valley Community Schools.

**Ralph and Carolyn Cole Baarslag** are living in Tacoma, Wash., where they are employed with the American Equipment and Tool Co.

**Mark Bersted** and **Laura Rzepka** were married May 26, 1984. He is a district supervisor with Aldi Foods and she is a production editor for Consumer Guide. They are living in Mt. Prospect, Ill.

**Ellen M. Klein**, Columbia, Mo., is a senior secretary in public relations at the University of Missouri-Columbia Hospital and Clinics.

**Daniel J. Fennewald** of St. Louis is a CPA for Coopers & Lybrand. His wife, Barbara, is a secretary. Their daughter, Christy, was born in 1984.

**Kenneth C. Hollingsworth**, an industrial arts teacher at Slater High School, is living in Slater, Mo.

**Elizabeth Ann Bohon** and **Dr. Donald D. Riley** were married June 16, 1984. They are living in Kirksville where she is a registered dental hygienist and he is a dentist. Libby received a bachelor of science degree in dental hygiene from the University of Missouri-Kansas City in April 1984.

**Henry Williams III** and **June Shaw Williams** ('84) are residing in St. Louis. He is an associate engineer and she is a housewife.

**Lt. Richard L. Adkison**, Fort Hood, Texas, is in the U.S. Army. His wife, Sherry Hummert Adkison, who attended NMSU 1979-1982, is a deli manager.

**James A. Hofstetter** is a social studies teacher and coach at Crawford County R-1 School in Bourbon, Mo. He is living in Washington, Mo.

**Douglas Brent McBride** lives in Harrisonville, Mo., where he is sports editor for the Democrat-Missourian.

**Nancy Goeke Whiting**, Kirksville, is a TPTAI in costumes and theater at NMSU. Her husband, John, is an instructor in the Division of Language and Literature.

**Sharon Turecek Engel** and husband, Christopher, are residing in Cedar Rapids, Iowa. She is an elementary art teacher and he is a lab technician at ADM.

**Duane A. Hercules** of St. Charles, Mo., is an accounting manager for Safety Mutual Casualty Corp.

**Karen A. Gorsline**, an administrator at Chariton Group Home, is living in Chariton, Iowa.

**Deborah Gaunt Farmer** and husband, Rick, live in Macon, Mo. Debbie is a bookkeeper-cashier at Prenger's IGA and Rick is in construction.

**Marilyn Hefner Morehouse** and husband, Mark, of Kirksville are the parents of a son, Matthew Alan, born June 7, 1984. Marilyn is employed with the city of Kirksville and Mark is director of housekeeping at Kirksville College of Osteopathic Medicine and Kirksville Osteopathic Health Center.

**Cynthia Shoush Woods**, and husband, Vernon, are living in rural Kirksville. She is a housewife and he is a farmer and trucker. Their daughter, Cara Nicole, was born June 28, 1984. They have one other daughter, Carli Michelle.

**Robert J. Munden** and wife, Sherry, of Marshall, Mo., are the parents of a daughter, Kristin Suzanne, born Aug. 3, 1984. Robert is employed by American Commodity Corp.

**Donna G. Murphy**, Enid, Okla., is director of Clay Hall and a seminary student at Phillips University.

**Mary J. Flaspohler** of Kirksville is a medical assistant.

**Scott R. Fouch**, Champaign, Ill., is a graduate student in taxation.

**Ellen A. Klaaren** is a band director at Irwin Community School. She is living in Harlan, Iowa.

## '83

**Cathy J. English**, Columbia, Mo., is a salesperson at a dress shop, The Paris.

**Debra L. Woodson** is living in Jefferson City, Mo., where she is a public relations coordinator with the Missouri Department of Tourism.

**Mary Elizabeth Bates Bowman** and husband, Gary, live in rural Maquon, Ill. She is a third grade teacher and he is a farmer.

**David W. Baxley** is employed with the Western Insurance Company at the home office in Fort Scott, Kan.

**William D. Shaw**, Juneau, Alaska, is head grounds keeper and a member of the faculty at the University of Alaska-Juneau. He has two daughters, Sarah and Tara.

**Kathleen Olsen Steele** and husband, Russell, are residing in Kirksville. Katie is associate director of admissions at NMSU and Russell is an attorney.

**Lamoine R. Doyle**, a teacher, is living in Tempe, Ariz. Her husband, Dennis Gottman, is an engineer.

**Melody A. Cox**, of Cantril, Iowa, owns two dance schools in Iowa.

**Jan Annette Parker** and **Scott Zajac**, who attended NMSU 1979-83, were married June 9, 1984. She is an LD/BD/MH teacher in the Special District of St. Louis County and he is an MBA student at St. Louis University. They are living in Kirksville, Mo.

**Christine Sage Robertson** and **Richard Craig Robertson** ('84) live in Cameron, Ill. Their son, Derek, was born in 1984. Christine is a housewife and Craig is a computer programmer.

**George L. Jones IV** and **Kimberly Jo Wright** were married Sept. 8, 1984. They are living in Mason City, Iowa, where Bucky is an illustrator/designer for Decal Specialties and Kim, former staff assistant in Publications at NMSU, is an art director for an ad agency.

**Jane Vohsen Whanger**, St. Louis, is an assistant manager at Brooks Fashions. Her husband, John, is manager of Wild Pair.

**Brenda Schmitter Archibald** of Grand Terrace, Calif., is a staff accountant with Swenson & Clark, an accountancy corporation. She received a master of accountancy from NMSU in August 1984. Her husband, Stephen, is an installer for G & B Installations.

**Sarah Kathleen Turner** is residing in Arlington, Texas, where she is working on a master's degree in nursing at the University of Texas.

**Tammy M. Ostrander**, Lohman, Mo., received a master's degree in English from NMSU in August 1984.

**Craig A. Behne**, a supply management intern with the U.S. government, is living in Wake Village, Texas.

**Jeffrey T. Hammerschmidt** of Columbia, Mo., is a law student at the University of Missouri-Columbia.

**Keith and Cynthia Zumwalt Baker** live in St. Louis. He is an internal auditor for General Bancshares Inc., and she is a premium auditor with Aetna Life and Casualty.

**Shari L. Ramsey** of Kirksville is a composition secretary in the writing lab at NMSU.

**Brenda Louise Goodwin** and **Daniel Kevin Boatright** were married Aug. 4, 1984. They are living in Kirksville where she is a sixth grade teacher at Mary Immaculate School. He is a graduate of Central Missouri State University and is a junior at Kirksville College of Osteopathic Medicine.

**Gregory W. Elson** and **Susan Randolph Elson** ('84) are residing in Brookfield, Mo. Greg is a manager trainee at Brookfield Federal Savings and Loan and Susan is an art teacher, grades K-12, softball and track coach and junior class sponsor at Bucklin, Mo.

**Karen Volle Sartain** is a teacher at Atlanta C-3 School. She and her husband, David, who is employed at Westlake's Hardware, are living in Moberly, Mo.

**Anne Marie Dougherty Wingert** and **Steven D. Wingert** ('84) are living in San Antonio, Texas. He is assistant director of campus life at St. Mary's University.

**Jason and Lori Butt Haxton** reside in Kirksville. She is a residence hall director and he is a TPTAI in the art department at NMSU.

**Janet Lee Mallett** and **David Alan Richardson** ('84) were married Sept. 1, 1984. She is an assistant manager of SFO in Overland Park, Kan., and he is a purchasing agent for Plastic Sales and Manufacturing Company in Kansas City, Mo. They are residing in Overland Park.

**Jane A. Vohsen** is living in Davenport, Iowa, where she is a salesperson at Bakers Shoe Store.

**Diane Greenwell Chinn**, an elementary teacher, lives in Clarence, Mo. Her husband, William, is a farmer.

**Margaret (Peggy) Faupel Bailey**, Kirksville, is a TPTAI in the Language and Literature Division at NMSU. Her husband, Jeffrey, a student, will graduate from NMSU in August 1985.

**Nancy Sue Hale Kapfer** is a bookkeeper at Mercantile Bank in Memphis. Her husband, Carl, is a truck driver for Kerr Grain and Seed Inc. They are residing in Memphis, Mo.

**Sarah L. Zimmerman** is living in Kirksville, where she is a student at NMSU.

**Julie McElhinney Roberts** is a computer programmer/accounting instructor at Kirksville Area Vocational Technical School. She and her husband, Marty, a pressman, are living in La Plata, Mo.

**Matthew F. McGahan**, Groton, Conn., is a staff nurse in the U.S. Navy.

**James O. Preston III** and **Rachel Gibbons Preston** ('84) are living in Jefferson City, Mo. He is a communications consultant with Missouri Baptist Convention and she is a substitute teacher.

**Wayne K. Robbins** and wife, Ellen, of Kirksville are the parents of a daughter, Jennifer Lynn, born Aug. 9, 1984. Wayne is a sophomore at Kirksville College of Osteopathic Medicine and Ellen is a registered nurse at Kirksville Osteopathic Health Center.

**Dennis D. Turner** and **Cathy Mack Turner** ('84) live in rural La Plata, Mo., where he is a farmer and she is a tailor.

**Joseph E. Gray** received a bachelor of science degree in mechanical engineering from the University of Missouri-Rolla in 1983. He is an engineer in the service department of Electromotive, a division of General Motors Corp. His home address is Clarksville, Mo.

**Janna Springman Weiss** of Muscatine, Iowa, is a substitute teacher for the Muscatine Community School System. Her husband, Curtis, is a naturalist for the Muscatine County Conservation Board.

**Kathryn Spoede Wolfe** and husband, Timothy, are living in Lisbon, Iowa. She is a housewife and he is a polisher.

**Gary D. Eagen**, Kirksville, is a teacher and coach for the Kirksville School System. He and his wife, Marilyn, are the parents of a son, Joseph William, born Nov. 10, 1984. They also have a daughter, Jessica Quinn.

**Carrie A. Herlein** is a first-year law student at Whittier College School of Law in Los Angeles.

**Monica L. Stone** of Des Moines, Iowa, is an animal health technician.

**Mark S. Renaud** and **Karla James Renaud** ('84) live in Kirksville. He is a bindery operator for Burroughs Corporation and she is a registered nurse.

**Brenda Lee Woods** and Glenn Edward Guenther were married Sept. 22, 1984. They are living in Kirksville where she is a fourth year student at Kirksville College of Osteopathic Medicine and he is a student at NMSU.

**William and Lisa Reynolds Landolt** are residing in Arlington, Texas. He is a police officer and she is a housewife.

**Kathryn C. Meyer** of Oskaloosa, Iowa, is a public school speech/language clinician.

**Mark and Rhonda Allen Trosen** reside in Hannibal, Mo. He is an administrative assistant for the Mark Twain Regional Advisory Commission and she is a projects/events supervisor for the Mark Twain Sesquicentennial Commission.

**Teresa Ann Wood** and David Allan Kerr were married Aug. 11, 1984. She is a temporary part-time teaching instructor in the Language and Literature Division at NMSU and he completed requirements for graduation from NMSU in Dec. 1984.

**Katherine Curtis Klauburg**, husband, Kurt, and sons, Jeremy Curtis and Jason Michael, are living in North Liberty, Iowa. Katherine is a housewife and Kurt, who received the doctor of osteopathy degree from Kirksville College of Osteopathic Medicine in 1984, is interning at the University of Iowa Hospital & Clinics in Iowa City.

**Virginia Boren Wright** and **Jeffrey B. Wright** ('84) of Perry, Mo., are both employed with the Ralls County R-II School District. She is a fifth grade teacher and he is a junior high physical education teacher and assistant high school coach.

**Kim Lanette McClanahan** and G. Leon Watson were married Oct. 6, 1984. She is a medical assistant for Dr. Larry McIntire of Kirksville. He graduated from the University of Missouri-Columbia and is a vocational agricultural instructor at South Shelby High School. They are residing in Lentner, Mo.

**Roy W. Pettibone** received a master of accountancy degree from NMSU in August, 1984. He is a staff auditor with Price Waterhouse in Denver. His wife, **Cheryl Morgan Pettibone**, is a secretary.

**Steven B. Donald**, assistant manager of New Life Fitness World, is living in Cedar Rapids, Iowa.

**Jerry A. Hartsock**, of Geneseo, Ill., is a graduate student.

**Cynthia R. Kennel**, Kirksville, is a graduate student in guidance and counseling at NMSU.

**Charles A. Camp** is a cost accountant for Richmarr Construction Corporation in Washington, D.C. He is living in Arlington, Va.

**Scott A. Blickensderfer**, Kirksville, is a sophomore at Kirksville College of Osteopathic Medicine.

**'84**  
**Shawn and Annette Parmentier Eckerle** are residing in Creve Coeur, Mo. He is an administrative assistant with McDonnell Douglas and she is an assistant auditor for Touche Ross & Co.

**Marcia Lynn Hoskin**, Appleton City, Mo., is an animal health technician in a large animal clinic in South Central Missouri.

**Cheryl Antle Rowland** and husband, Edwin, are living in Columbia, Mo. She is a registered nurse at Boone Medical Center and he is a diesel mechanic.

**Shari Covey King** and husband, Valton, of Kirksville are the parents of a daughter, Ashley Erin, born Aug. 14, 1984. They also have a son, Nathan Robert. She is a housewife and he is a 1984 graduate of Kirksville College of Osteopathic Medicine and interning at Kirksville Osteopathic Health Center.

**Nowshad and Vickie Fraley Irani** live in Chicago. He is manager of a Standard Station and she is in personnel and purchasing for Rozel Industries.

**J. Scott Billings**, Tulsa, Okla., is an osteopathic medical student. His wife, Terri, is an assistant to a physical therapist. They have a son, Mike.

**R. Todd Richman**, Galt, Mo., is a music director for Grundy County R-V Schools.

**Dennis R. Coons** is employed by the city of Pacific, Mo., as a Community Development Technician. His address is St. Clair, Mo.

**Lynee Elizabeth Leath** and Daniel Ray Miller were married June 16, 1984. She is employed in the president's office at Moberly Area Junior College and he is with M&S Construction in Macon. They are residing in Moberly, Mo.

**B. Keith Greenwood**, a radio announcer, is living in Waynesville, Mo.

**Kimberly Kay Haynes** and Mark Douglas Wood were married June 8, 1984. She is a secretary for Hallmark Cards in Kansas City and he is employed at Westfall GMC. They are living in Excelsior Springs, Mo.

**Brenda L. Emberton** of Independence, Mo., is a staff accountant at Fixtures Furniture in Kansas City.

**Joyce M. Sommer** is living in Glasgow, Mo., where she is a learning disabilities teacher at Howard County R-II Elementary School.

**Cynthia (Cindy) Riddle**, Kirksville, is a secretary in the Criminal Justice Division at NMSU.

**Carolyn J. Schmidt** is an auditor in the Missouri State Auditor's Office. She is living in Jefferson City, Mo.

**Margaret L. Dayhoff** and husband, Dr. P. S. Dayhoff, are residing in Acornhoels, Republic of South Africa. She is a teacher and he is an academic dean in a theological college. Their children are Paula Else, Patricia Barnes, Elizabeth Dayhoff, and James Dayhoff.

**Kelly J. Scantlin** of Kirksville is an admissions counselor at NMSU.

**Klarissa K. Kratky** is a music teacher, grades K-12, and a junior high mathematics teacher. She is living in Gallatin, Mo.

**Lisa M. Winger**, Fort Bliss, Texas, is a second lieutenant in the U.S. Army Air Defense Artillery.

**Nora L. McNeil** lives in Ponte Verda Beach, Fla. She is a receptionist/case worker for Congressman Bill Chappel in the Jacksonville District Office.

**Margaret (Meg) Wynn** is a freshman adviser at Miami University, Oxford, Ohio.

**Michael and Michelle Moss Timmer** are living in St. Louis. He is a designer/draftsman at SECO Engineering in south St. Louis and she is an assistant manager at The Room Makers in Chesterfield.

**Carlos Hernandez-Norton** of Kirksville is the men's tennis coach at NMSU.

**Kathy A. Biggs** is an associate analyst in Conoco's Management Development Program, currently assigned in Continental Pipeline Co. She is residing in Billings, Mont.

**James and Cheryl Hallemeier Skiles** live in O'Fallon, Mo. He is a draftsman for L. R. Spraul and Associates and she is a salesperson at Worth's Clothing.

**Laurie M. White** is living in Moberly, Mo., where she is public relations assistant/secretary at Moberly Regional Medical Center.

**Brenda Hirst Skillman** is an assistant principal. She and her husband, David, a high school counselor, are residing in Brentwood, Mo.

**Sharon Alan Little** and Kurt Morgan Bracke, who attended NMSU, were married June 23, 1984. They are living in Kirksville where she is a nurse at Kirksville Osteopathic Health Center and he is a student at Kirksville College of Osteopathic Medicine.

**Susan Hanisch Richmond**, St. Louis, is a sixth grade science teacher in the Pattonville School District. Her husband, Brad, is a carpenter.

**Karla M. Schneider**, management director of Boone Consulting, lives in Payson, Ill.

**Kristin L. Macy** of Fairfield, Iowa, is a second lieutenant in the U.S. Army Reserves.

**Michael D. Regan** is living in Columbia, Mo., where he is attending law school at the University of Missouri-Columbia.

**Laura A. Jackson** a middle school science teacher, is living in Excelsior Springs, Mo.

**Lisa Marie Buehler** and James Edwin Wildhaber were married Oct. 6, 1984. They are living in Jefferson City where she is an accountant for Wolf, Buehler and Bates, CPA's, and he is employed at Wildhaber's Marine.

**Ruth A. Limbert**, is an admissions counselor for NMSU. Her address is Washington, Mo.

**Julie Bair Boyd** of Kirksville is a medical transcriptionist at Grim-Smith Hospital. Her husband, Jeffrey, a student at NMSU, will graduate in May.

**Margaret Saavedra Von Lienen**, St. Louis, is an internal revenue agent. Her husband, Brian Scott Von Lienen, completed requirements for a degree from NMSU in December, 1984, and is a manager-trainee with Edison Brothers.

**Patricia A. Bell**, Kirksville, is a student at Kirksville College of Osteopathic Medicine.

**Theresa M. Schneider**, a legal secretary at Coburn, Croft & Putzell Law Firm in St. Louis, is living in Ferguson, Mo.

**Susan R. Briggs** of Kirksville is a graduate student and TPTAI in the Business Division at NMSU.

**Phillip D. Moore** and Mary Michelle Boling Moore, who attended NMSU, are the parents of a daughter, Sheena Downey, born Dec. 25, 1984. They are living in Shelbina, Mo., where Phillip is a sales representative for Metropolitan Insurance Co.

## MISCELLANEOUS NOTES

Loren Richard Klahs, who attended NMSU 1967-1970, is an academic advisor at the University of Missouri-St. Louis and also a free-lance and staff writer for St. Louis Weekly magazine. His address is Glen Carbon, Ill.

# deaths

**Paul L. Coffey** ('26) died July 12, 1984, in Venice, Fla. Surviving are his wife, Evangeline, and daughter, Gail. Mr. Coffey was a high school teacher for many years, the last 35 in Upper Darby, Pa. He was awarded the Freedoms Foundation Medal in 1960 for excellence in teaching. He retired in 1969. (We are grateful to Mrs. Coffey and her daughter who sent a contribution to the University in his name.)

**H. Smith Unger** ('25) died Aug. 19, 1984, in Downey, Calif. His teaching career began at Narka, Kan., in 1925. He also taught in Belleville and Highland, Kan., and West Middle School in Downey. His work included teaching, coaching, principal and superintendent of schools. He received the Los Angeles County Industrial Arts Foundation's "Outstanding Industrial Educator of the Year" award in 1967. He received a master's from the University of Missouri-Columbia in 1937 and did post-graduate work at California State University-Long Beach. Retiring after 45 years in the field of education, Mr. Unger was employed by Ace Awning for several years. He was also active in the church, being ordained an elder on Jan. 15, 1961, and serving until 1964. He was a member of the Smithton Masonic Lodge in Kansas and received the "Outstanding Teacher of the Year" award in 1964 from the Downey Masonic Lodge. He also served as a Boy Scout Merit Badge Counselor from 1960 until the time of his death. One of the highlights of his life was an event honoring him and his work at Highland, Kan., in 1980 with 800 of his former students in attendance. (This information was sent by his niece, **Betty Howerton Adams** ('50) of Old Hickory, Tenn.)

**Eldorado Samuel Neighbors** ('23), 89, of Milan, Mo., died Sept. 15, 1984, in Sullivan County Memorial Hospital. She was married to Charles H. Neighbors who preceded her in death on May 12, 1969. Mrs. Neighbors was a teacher in Sunny Ridge, Jackson Corners, Prairie Flowers and Pollock rural schools in Sullivan County. In 1930 she was employed with the United States Bureau of Census in Washington, D.C. Following her retirement, she returned to the Green City, Mo., area where she and Mr. Neighbors were engaged in farming. Burial was in the Oak Grove Cemetery southeast of Milan.

**Sadie Madge Hunt** ('26), 87, of Kirksville died Sept. 19, 1984, at Twin Pines Adult Care Center where she had resided since 1972. She taught school in Missouri and was a speech correctionist at Moberly Junior College at the time of her retirement in 1959. She received a master's degree from Colorado State University-Greeley. Following her retirement, Miss Hunt moved to Kirksville. Surviving are two brothers, **Rene D. Hunt** ('29) of Hannibal, Mo., and **Bruce H. Hunt**, former member of the NMSU Board of Regents, of Kirksville. Graveside services were held at Maple Hills Cemetery, Kirksville.

**Dorothy Drum Saffell** ('52), 72, of La Plata, Mo., died Sept. 18, 1984, in Kirksville Osteopathic Hospital. She was married to Hollis Saffell who survives. Also surviving are her mother of La Plata; one daughter, **Sharon Saffell Edwards** ('66), of Macon, Mo.; and two granddaughters, Stephanie and Abbie. Mrs. Saffell also received her master's degree in elementary education from NMSU and was a member of Delta Zeta Sorority. For several years she was a teacher in Rural Dell, Lone Star, Banner and Dover rural schools and Atlanta Elementary School in Missouri. In 1951 she became a sixth grade teacher in La Plata and later the La Plata Elementary School principal, a post she held until her retirement in 1977. Burial was in the La Plata Cemetery.

**Betty Ann Adkins** ('62) of Brashear, Mo., died Sept. 28, 1984, at the age of 63. She was married to Harold Adkins who survives. Also surviving are two sons, Dean Adkins of Brashear and Woody Adkins of Overland Park, Kan.; two daughters, **Colene Adkins Wilson** ('73) of Queen City, Mo., and **Dr. Gelene Adkins** ('75) of Fox Point, Wis.; four grandchildren, Belynda Adkins, DeeAnna Adkins, Karlon Adkins and Angela Wilson; and one sister, Corrine Bell of Deer Creek, Ill. Mrs. Adkins received her master's degree from NMSU in 1967. For 28 years she taught school in Adair, Schuyler and Lewis counties and at the time of her death she was teaching at Schuyler R-I School in Queen City. Interment was in East Center Cemetery east of Kirksville.

**Patricia Osman Wadlin** ('71), 37, of Brookfield, Mo., died Sept. 23, 1984, in the University of Missouri Medical Center in Columbia. Surviving are one daughter, Cherie Wadlin, and her parents, Edward Osman and **Hortense Agee Osman** ('44), of Callao, Mo. Mrs. Wadlin was a member of Delta Zeta Sorority and received her master's from NMSU in 1972 in counseling and guidance. She was a teacher at the University of Missouri-Columbia and in schools in Macon County and was active in the Head Start Program in Kirksville. She left teaching to assist in the management of the Bevier and Southern Railroad Co. At the time of her death she was owner and operator of the Lemon Twist Deli Arcade in Brookfield. Burial was in the Locust Grove Cemetery at Callao.

Frances Brantley Lichty, who attended NMSU in the 1920's, died Sept. 11, 1984, in Normal, Ill. She was married to **Dr. Elden A. Lichty** ('28) who survives. Also surviving are three children, Robert E. Lichty of LeRoy, Ill., Barbara J. Blunk of Normal and Elizabeth F. Mayes of Livonia, Mich. Mrs. Lichty was a teacher in north Missouri for five years.

**Margaret Stokesberry Dunkin** ('71) of Geneva, Ohio, died Sept. 18, 1983. She had back surgery at Cleveland Clinic and one week later died of a heart attack at N.E.O. Hospital. She was a teacher in Geneva and retired on disability in 1978. Interment was in Saybrook Cemetery, Saybrook, Ohio. (This information was sent by her husband, Marion.)

**Harold D. Leach** ('40) of San Antonio, Texas, died Jan. 17, 1984. Surviving are his wife, Melvena Keller Leach, and two children, Linda Styles and Larry Leach, of San Antonio. He received a master's degree from Trinity University and was a retired lieutenant colonel in the U.S. Army and also a retired teacher. (This information was sent by his wife.)

**Dr. Dan E. Montgomery** ('49) died Aug. 21, 1984, at the age of 55. Funeral services were held in Grover City, Calif. He received a master's degree from NMSU in 1957 and a doctor in education degree from the University of Missouri-Columbia in 1962. Dr. Montgomery was a teacher for several years and in 1973 he joined the administrative staff at the West Covina School District in California. He was a veteran of the Korean Conflict, a member of the Continental Masonic Lodge, the West Covina Elks Lodge and the Pismo Beach Coast Board of Realtors. Surviving are his wife, Carol; one daughter, Michelle; one son, Michael; four step-children; five brothers; and one sister.

**Dr. Charles S. Turner** ('32) of Oswego, N.Y., died June 22, 1984. He received a master's degree in 1937 and a doctor of education degree in 1940 from the University of Missouri-Columbia. He was retired from New York State University where he was Dean of the School of Education and acting president. (This information was sent by his wife, Evelyn.)

**Mary Ratliff McDonald** ('29), 77, died Sept. 4, 1984, in McIntosh, Fla. She was preceded in death by her husband, E. R. McDonald. Surviving are two sons, George H. McDonald and Carl P. McDonald, and four grandchildren. (This information was sent by her son, Carl.)

**Dr. Theodore C. Russell** ('30), 73, of Raleigh, N.C., died Sept. 15, 1984, after a long illness with cancer. He received a master of music degree from Northwestern University in 1935 and a doctor of philosophy degree from the University of Minnesota in 1969. Dr. Russell was a retired professor of music. Surviving are his wife, Marie; a daughter, Elaine Fifer; a brother, **Ralph E. Russell** ('52) of Osage Beach, Mo.; a sister **Helen Russell Sluder** ('33) of Forsyth, Mo.; and a granddaughter, Abigail Fifer.

**Augusta (Winnie) Hall Porter** ('41), 83, of Novinger, Mo., died Sept. 24, 1984, in Twin Pines Adult Care Center in Kirksville. In 1921 she was married to Alex Wernert who preceded her in death. In 1954 she married John Porter who died in 1965. Surviving are one son, Willard Wernert of Novinger; one daughter, Mrs. Jane Burns of Lubbock, Texas; one brother, Olin Hall of La Plata, Mo.; seven grandchildren and twelve great-grandchildren. Mrs. Porter had taught in schools throughout Missouri for 46 years. Burial was in the La Plata Cemetery.

**R. Earl Klinzman** ('67) of Cedar Rapids, Iowa, died June 6, 1984. He received a bachelor of science degree from the University of Northern Iowa in 1936 and a master's degree from NMSU in 1967. He was a retired teacher and coach. He is survived by his wife, Frances Rogers Klinzman and a son, Roger Earl Klinzman. (This information was sent by his wife.)

**Kenneth L. Motter** ('69), 37, of Kirksville died Sept. 26, 1984, from a self-inflicted gunshot wound. Surviving are his mother, **Anna Catherine Brown Motter** ('34) of Kirksville; a son, Mark Motter, and a daughter, Suzanne Motter, both of Anderson, Ind.; two sisters, **Margaret A. Moore** ('62) of Annandale, Va., and **Josephine A. Motter** ('66) of Falls Church, Va.; and a brother, **Norman Keith Motter** ('60) of Dallas. Mr. Motter worked for thirteen years with the Donaldson Company and was recently a cross-country truck driver for Monkem Company Inc. of Joplin, Mo. Burial was in the Mulberry Cemetery northwest of Kirksville.

**Harold D. Cox** ('39), 70, of Clarence, Mo., died Oct. 4, 1984, in the Clarence Nursing Home where he had been a resident for several years. He received a master's degree from the University of Missouri-Columbia. Mr. Cox taught at the University of Missouri, was a principal and teacher at Clarence High School and an English teacher at South Shelby High School. He is survived by a sister, Mary Jane Shoush of Festus, Mo. Burial was in the Maplewood Cemetery, Clarence.

**Frances Eva McMillin** ('67), 72, of Bellevue, Neb., died Nov. 3, 1984, in Midland Hospital, Papillion, Neb. She was married to Paul McMillin who survives. Also surviving are two daughters, Frances Moore and Hazel Harrison; one son, Russell McMillin; six grandchildren, and three great-grandchildren. Mrs. McMillin was an elementary teacher in Bloomfield, Iowa, and Davis County Iowa rural schools. Burial was in the I.O.O.F. Cemetery in Bloomfield.

**Margaret Lovelace Angel** ('44), 71, of Vandalia, Mo., died Nov. 21, 1984, at her home. She was married to Duard L. Angel, who survives. Also surviving are one daughter, **Ruth Angel Miller** ('70), and two grandsons, Raymond T. Miller III and Robert S. Miller, all of Vandalia. She was preceded in death by five brothers and six sisters. Mrs. Angel received a master's degree from NMSU in 1970. She was a sixth grade teacher for twelve years in the Wellsville-Middletown R-I School District and also taught twelve years in rural schools. Burial was in the Middletown Cemetery.

**Joseph O. Otterson** ('13), 91, of Verona, Wis., died Oct. 29, 1984, in a Madison hospital. He was a retired teacher, a former state employee and a veteran of World War I. Survivors include his wife, the former Maybelle Goodyear; one daughter, Lorraine Dean of New York City; one son, Jon Otterson of Madison, Wis.; one grandson and three granddaughters. Burial was in the Verona Cemetery.

**Arthur W. Hall ('31)**, 79, of Greeley, Colo., died Nov. 1, 1984, at North Colorado Medical Center. He was married to Veta Bradley who preceded him in death May 4, 1981. Survivors are a son, Raymond L. Hall of Boulder, Colo.; three sisters, Viola Willey, Alma Dee Daniel and Marie Clark of Missouri; and two brothers, Lester Hall and Robert Hall, also of Missouri. Mr. Hall received a master's degree from the University of Colorado in 1954. In 1938 he and his wife moved to Colorado from Missouri and he was a teacher in schools in Weld County and Denver suburbs, retiring in 1967. Interment was in the Linn Grove Cemetery. (This information was sent by **Wilbur P. Kimbly ('28)** of Leavenworth, Kan.)

**Raymond E. Good ('73)** of Carrollton, Texas, died Dec. 25, 1983, of cancer. He is survived by his wife, Catherine Machau Good, and two sons, Nathanael and Aaron. Mr. Good received a master of theology degree from Dallas Theological Seminary on May 2, 1983. (This information was sent by his wife.)

**Dr. Aubrey D. Hibbard ('31)**, 76, of Columbia, Mo., died Nov. 18, 1984, at Boone Hospital Center. He had been a horticulturist at the University of Missouri-Columbia for 43 years before retiring in 1978. As a researcher, Dr. Hibbard published many technical papers on fruit and nut crops in scientific and professional journals and served as a long-term supervisor of the Horticultural Field Research Laboratory in New Franklin, Mo. He received his master's and doctorate degrees from the University of Missouri-Columbia in 1934 and 1937, respectively. Surviving are his wife, **Coras Phillips Hibbard ('31)**, and a daughter, Nell Rose Goedecke of St. Louis. Burial was in Memorial Park Cemetery in Columbia.

**Mary Stroup Spring ('50)**, 84, of Quincy, Ill., died Nov. 30, 1984, in the Quinsippi Nursing Center. She was married to Albert Spring who preceded her in death in 1971. Also preceding her in death was one brother. Surviving are three brothers, Robert O. Stroup of Vienna, Va., **Harry E. Stroup ('29)** of La Plata, Mo., and James Stroup of Creve Coeur, Ill. Mrs. Spring received a master's degree from NMSU in 1952 and spent five summers working under the direction of Dr. Nate Ricketts at the University of Washington, studying psychology, human behavior and mental disorders. She taught at many rural schools in Missouri and was a teacher at the Berrian School in Quincy for 15 years. Mrs. Spring was a member of the Central Baptist Church in Quincy where she served as a deaconess, a Sunday school teacher and conductor of Junior Church for more than 20 years. Burial was in Memorial Park, Quincy.

**Gary R. Koppenhaver ('66)** of Dubuque, Iowa, died Sept. 28, 1983. He received a master's degree from Iowa State University in 1979 and was a journalism teacher at Hempstead High School in Dubuque. Surviving are his wife, Beverly, and children, Chad, Kimberly and Stacie. (This information was sent by his daughter, Kimberly.)

Dr. Frederick E. Shaw, 87, of Burlington, Iowa, died Nov. 29, 1984, in the St. Francis Care Center in Burlington. He was married to **Leonah Grassle Shaw ('38)** who survives. Also surviving are two sisters, Beryl Prescott of Silver Beach Long Island, N.J., and Dorothy Tumberlin of Durango, Colo.; and two grandchildren. Other relatives include **Dr. Sue Grassle ('29)** of Kirksville. He was preceded in death by one daughter, Barbara Fleming. Dr. Shaw was a 1939 graduate of Kirksville College of Osteopathic Medicine. After graduation he moved to Burlington where he practiced until his retirement. During World War II, he served with the United States Armed Forces. Burial was in Highland Park Cemetery in Kirksville.

**Ida Bernice Golden of La Belle, Mo.**, died Dec. 12, 1984, at the age of 81 in La Belle Manor Care Center. She was a teacher for 41 years in Scotland, Knox and Lewis Counties in Missouri before her retirement. She taught all grade levels in music and gave piano lessons. Surviving are one niece and two nephews. She was preceded in death by two brothers. Burial was in the La Belle Cemetery.

**Terry Lee Nelson ('77)**, 32, of Mendon, Ill., died Dec. 13, 1984, at his home. He was vice-president of the Mendon State Bank. Before his association with the Mendon Bank, Mr. Nelson taught business classes four years at Quincy Junior High School. He was also co-owner of the Country Junction Crafts and Gifts at Mendon. He received a bachelor's degree from Culver-Stockton College in Canton, Mo., and a master's degree from NMSU in 1977. He was a graduate of the banking school at Southern Illinois University. He was married to Mary Jo Schoch who survives. Also surviving are his mother, Edna Nelson of Mt. Sterling, Ill.; one son, Chad Lee of the home; one daughter, Holly Jo, also of the home; and one sister, Wanda Martin of Pittsfield, Ill.

**Mario J. Grilli ('38)**, 69, of Northbrook, Ill., died May 1, 1984. He was pronounced dead in Glenbrook Hospital, Glenview, Ill., after collapsing while playing golf. He was vice-president of Lloyd Thomas-Coats & Burchard, an industrial appraisal firm in Niles where he had worked 40 years. Mr. Grilli is survived by his wife, Helen; a son, Richard; a daughter, Nancy; and two sisters. (We are grateful to Mrs. Grilli for this information.)

**Hugh A. Vail ('22)**, 90, of rural Indianola, Iowa, died Jan. 9, 1985, in Mercy Hospital Medical Center, Des Moines, following a stroke. He taught in public schools in Colorado, Wyoming, Missouri and Iowa and served as superintendent of schools in Patterson, Fairband, LeRoy, Pacific Junction and Lovilia in Iowa. After his retirement he was engaged in farming and a part-time teacher at Southeast Warren High School. His wife, **Sallie Childers Vail ('29)**, died May 17, 1984. Also preceding him in death was a brother, **Don J. Vail ('27)**. Surviving are one son, James A. Vail of Indianola; one daughter, **Julia Vail Doyle ('61)** of Kansas City; one sister, Frances B. Young of Kirksville; and six grandchildren. Burial was in the I.O.O.F. Memorial Gardens in Indianola.

**James W. Siehl ('53)** of Trotwood, Ohio, died March 14, 1984. He was a teacher at Trotwood City Schools, where he had taught 27 years. He had also been a teacher in Gilman City, Mo. Mr. Siehl received a master's from NMSU in 1958 and attended Wright State University, working on a doctorate. Surviving are his wife, Patricia Ann; and children, Summer Jean, James Jr., Steven Jay, Tamara Lynn and Jeffrey Douglas. (This information was sent by his wife.)

**Dr. William B. Lomax ('29)** of Montrose, Colo., died Dec. 15, 1984, at his home after a prolonged illness. He is survived by his wife, Joyce; a daughter, Karen Ann Hollenbeck; a son, Clayton C. Lomax; and two grandchildren, William Matthew and Karen Hollenbeck, all of Montrose. Also surviving are a stepson, Robert Lynn Atkinson; two step-grandsons, Robert John and Shane Atkinson, of Olathe, Colo.; three sisters, **Alice Lomax Ream ('28)** and **Beatrice Wetzel** of Clinton, Mo., and **Vesta Lomax Sundelius ('31)** of Leaclede, Mo. Following graduation from NMSU, he was athletic director, coach and science teacher four years at Wellsville (Mo.) High School. In 1937, he received a doctor of osteopathy degree from Kirksville College of Osteopathic Medicine, where he was director of athletics and basketball coach for three years. Following his graduation from medical school, he opened his first office in Montrose. In 1943, he purchased the Montrose Hospital, which he operated until 1968, and continued in active practice until his retirement in 1978. He was an active staff member at Montrose Memorial Hospital from 1969 to 1978, with courtesy privileges thereafter. Dr. Lomax attended his 50th anniversary class reunion at Northeast during Homecoming 1979. Interment was in Cedar Cemetery.

**Vera Gordy Collins ('39)**, of Davenport, Iowa, died Jan. 31, 1985, in the Clarence (Mo.) Nursing Home where she had been a patient one week. She was married to Bob S. Collins who survives. Also surviving are one stepson, Bob Collins Jr., of Clarence; one brother, Cecil Gordy of Fonda, Iowa; and two step-grandchildren. Mrs. Collins was a retired teacher. Burial was in Bacon Chapel Cemetery north of Lentner, Mo.

**E. Denise Searcy Minter ('81)**, 27, of Lancaster, Mo., died Jan. 17, 1985, at Grim-Smith Hospital in Kirksville from injuries sustained in a two-vehicle accident five miles south of Lancaster. She was married to **Dr. Richard E. Minter ('79)** who survives. Also surviving are her parents, Wayne and Wilma Searcy of Kirksville, a son, Seth Ryan Minter, of the home; and a sister, **Janet Searcy Redman ('73)** of Leon, Iowa. Mrs. Minter was a senior medical student at Kirksville College of Osteopathic Medicine. She was a member of Sigma Sigma Sigma Sorority, a student member of the American Osteopathic Association, Delta Omega Sorority, Student Osteopathic Medical Association and a student member of the Missouri Osteopathic Association. Burial was in Park View Memorial Gardens in Kirksville.

**Beverly DeWitt Blackburn ('41)** of Clayton, Mo., died Jan. 22, 1985, at the age of 63. She was married to James O. Blackburn, who preceded her in death. Also preceding her in death were her father, J. M. DeWitt and her twin sister, **Madge DeWitt Hemphill ('41)**. Surviving are her mother, Opal DeWitt of Kirksville. Mrs. Blackburn received a master's degree from Washington University in 1966. For the past 33 years she had been employed by the St. Louis County Juvenile Court as Program Director of Detention. Burial was in Maple Hills Cemetery, Kirksville.

**Sabiell Neighbors McGown ('28)**, 94, died Jan. 7, 1985, in Maranatha Manor Nursing Home in Brookfield, Mo. She was preceded in death by her husband, Clarence S. McGown, who died in 1953, and a brother, Archie Neighbors. Surviving are a niece and two nephews. Mrs. McGown was an elementary and high school teacher in Linn and Chariton counties and Kirksville. She moved to Marceline in 1954, where she spent her retiring years. Burial was in Mount Pleasant Cemetery in Mike, Mo. (This information was sent by her nephew, N. F. Neighbors, of Augusta, Ga.)

**Margaret Torrey Nelson ('58)** of Chillicothe, Mo., died Jan. 27, 1985, age 73, in Darr's Nursing Home in Chillicothe. She was married to Olin Nelson who preceded her in death. Also preceding her in death was one brother. Surviving are one son, **Victor O. Nelson ('60)** of Hamilton, Ill.; one brother, Dudley Torrey of Aurora, Colo.; two sisters, **Dorothy Torrey Quigley ('51)** of Kansas City, Mo., and **Muriel Daugher** of Chula Vista, Calif., and two grandchildren. In 1956 she began her teaching career in Chillicothe, retiring in 1974. Burial was in Pleasant Ridge Cemetery northwest of Princeton.

## Student appointed to NMSU's Board of Regents

"Right now, my function is to listen and then speak, and not to speak and then listen."

Susan Plassmeyer, newly appointed student representative to the Board of Regents, used this phrase to describe her position on NMSU's governing body.

But do not confuse Plassmeyer's description with the similar motto, "A child should be seen and not heard."

First of all, Plassmeyer is not a child. Secondly, the group to which she now belongs is likely to be very interested in hearing what she might have to say.

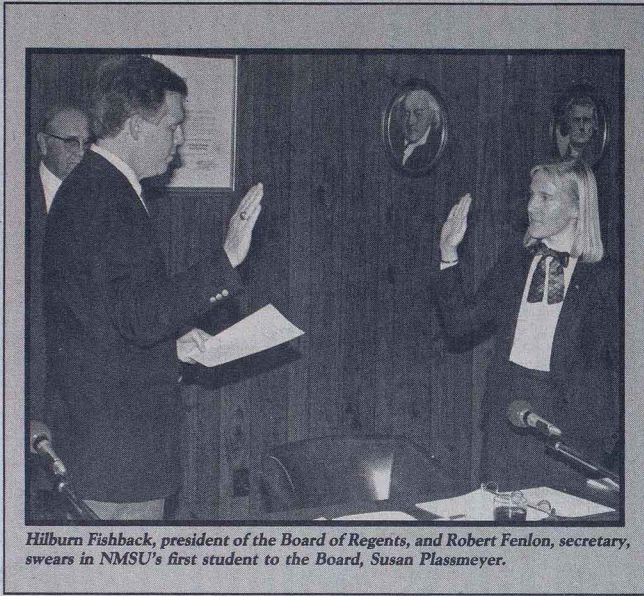
Plassmeyer, a third year student majoring in both business administration and economics, was appointed to the Board in November 1984 by former Governor Christopher Bond.

"The purpose, the way I see it, is for the students to be able to have a direct link to the Board," Plassmeyer said.

"In the past, during a meeting, if our Board had a question, they would ask the students who were in the audience," Plassmeyer said. "But, for all practical purposes, the students couldn't say, 'Hey, I'd like to comment on that,' because they weren't sitting at the table," Plassmeyer said.

"Now, the real advantage is, not only am I sitting at the table and they can ask me questions, but I can comment as a member of the Board," Plassmeyer said. "That is the real function of the student rep; to be able to comment and talk with them (the Board) as sort of an equal," she said. Plassmeyer does not have a vote on the Board.

Judging from her involvement in a wide array of student organizations, Plassmeyer is in constant contact with the fellow students she represents. She is president of the Pershing Society, publicity chairperson of the Student Activities Board, and a Student Ambassador. She is also vice president of professional activities for Delta Sigma Pi professional business fraternity, and a student representative on the Undergraduate Council.



Hilburn Fishback, president of the Board of Regents, and Robert Fenlon, secretary, swears in NMSU's first student to the Board, Susan Plassmeyer.

Plassmeyer's extracurricular involvement, combined with local publicity about the prestigious Regents position, has caused her to become somewhat of a student celebrity on campus.

"I've found that I have more people saying 'Hi' to me, who know me by name, who I've never seen before in my life," she said.

Plassmeyer's term on the Board runs until January 1986. Does she have any goals that she hopes to accomplish before her term expires?

"One of my goals is to give the Regents a chance to interact with the students more. For instance, something that I have already done was get them tickets to the (SAB) Dinner Theater. It's a student production, and they're all going to be there as Board of Regents members. I think it's important for the students to see them," Plassmeyer said.

"Specific goals would be to learn more about the Board. I don't have anything particularly in mind for policy changes. But, if something is brought to my attention. . . I'm just very open at this point," Plassmeyer said.

"More than anything else, I'd like to pave the way for the next person. Again, I have to realize that everything I do or don't do sets precedents for the next person," Plassmeyer said.

## Moving? Newly married? New job? Births?

We want to know! The Alumni Office attempts to maintain accurate and current files on 34,000 graduates of NMSU. This requires assistance from you and many hours of effort on the part of the Alumni Office staff. Won't you please help by filling out and returning this form?

Name \_\_\_\_\_

Social Security Number \_\_\_\_\_ Year Graduated \_\_\_\_\_

Street \_\_\_\_\_

City \_\_\_\_\_ State \_\_\_\_\_ ZIP Code \_\_\_\_\_

Telephone Number (include area code) \_\_\_\_\_

Present Position \_\_\_\_\_

Name of Spouse \_\_\_\_\_ Wife's Maiden Name \_\_\_\_\_

Position of Spouse \_\_\_\_\_

Spouse an NMSU graduate? yes  no  Year \_\_\_\_\_

Children: (Names and Years of Birth) \_\_\_\_\_

Deaths in Family \_\_\_\_\_

Other Degrees: (University and Year Received) \_\_\_\_\_

May Information be used in NEMOSCOPE? yes  no

Person Returning Card \_\_\_\_\_

Non-Profit Organization  
U.S. Postage Paid  
Northeast Missouri  
State University

Alumni Association/Development  
112 Administration/Humanities Building  
Northeast Missouri State University  
Kirksville, MO 63501

ADDRESS CORRECTION REQUESTED