

Special Bulletin

First District Normal School

Kirksville, Mo.



January, 1907



## **A MODEL RURAL SCHOOL ON THE NORMAL SCHOOL CAMPUS.**

This Model Rural School House has been designed and constructed to show that a rural school in any part of Missouri can, for the investment of about \$350.00 in addition to the usual cost of a good building, have all the conveniences and comforts that can be secured in any city school house.

It is the intention to have in this school house, within the near future, a Model Rural School, the children to be transported in covered vehicles to and from the school. This is to be a Model School, not a Practice School. It is to exemplify the best things which a school board and a good teacher with good facilities can do in and for a rural school.

This building is the culmination of a long cherished hope. The designer while State Superintendent of Schools in the 90's traveled widely throughout the north and east in search of the best models. The ideal and practical could not be found in one building. Hence a long series of experiments in working out this model.

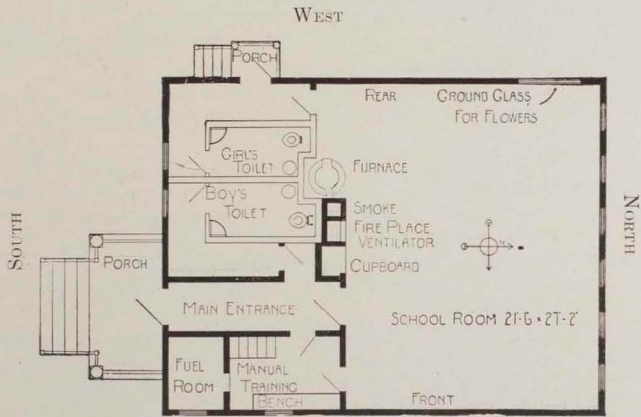
### FOUNDATION PLAN.

1. The foundation is rectangular in form and 28x36 ft. outside measurement.
2. Outer foundation, of concrete, extends two feet below and two feet above surface of ground.
3. Inner 10-inch concrete wall encloses cellar, 6x14 ft.
4. Cellar can't freeze up.
5. Cellar is ventilated into smoke flue.
6. Cellar has concrete floor, with drain into sewer.
7. Cellar is reached through trap door in boys' hall way.
8. Cellar contains pneumatic pressure tank 3x8 ft., working capacity 350 gallons.
9. Cellar contains force pump connecting tank with well through pipes below frost line.
10. Cellar contains soil pipes, water pipes and drain pipes reaching to and from toilet rooms above.
11. Cellar contains sewer connections. Sewer enters city system.
12. In a rural community sewer may enter cess pool, **old** or **new**, at rear or side of lot; or a tile may conduct sewage into neighboring slough or creek.



### FLOOR PLANS.

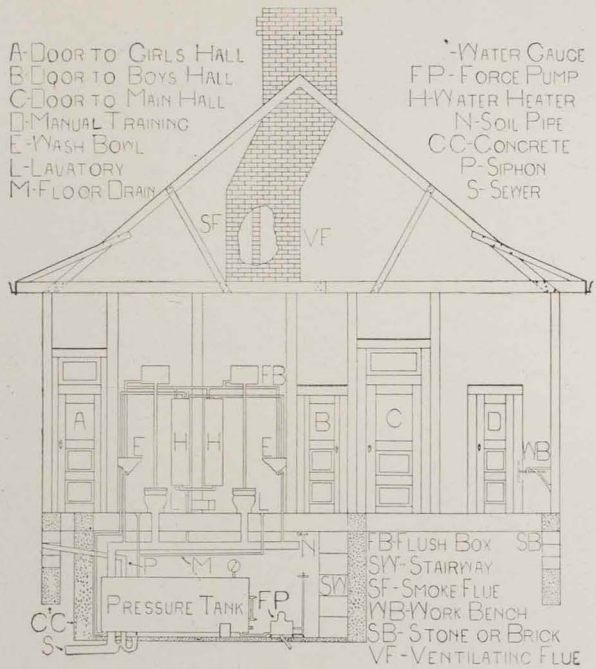
1. Floor plan, 28x36 ft., same as foundation plan.
2. School room, 27 ft. 2 in. by 21 ft. 6 in.—12 ft. from floor to ceiling.
3. Door at rear on right side leads to girls' toilet room, porch and play ground.
4. Furnace in alcove at side of room distributes pure air and equalizes temperature.
5. Pure air enters furnace through asbestos-covered duct under floor.
6. Ventilating flue is 13x21 inches in the clear.
7. Opening into ventilating flue is made into a neat fire place.
8. Smoke flue, 13x13 inches in the clear, helps heat ventilating flue.
9. Cupboard in wall at side of vent flue has a neat unfolding leaf for teacher to write on.
10. Manual training shop is 6x8 ft. in the clear and has abundant light.
11. Fuel room,  $4\frac{1}{2}$ x6 ft. in south east corner, capacity six tons of coal.
12. Stairway to attic starts in corner of manual training room, runs over fuel room and entrance.
13. School room lighted through six large windows on north side.
14. Children face the east. Light comes from their left.
15. Halls leading to toilet rooms contain hooks for hats, clothing, etc.
16. School room receives direct sun light on floor at S. E. and S. W. corners through glass in doors.
17. Ground glass window on west side near north west corner, for window garden, prevents glaring light, admits chemical rays for flowers and for sanitation.



FLOOR PLAN.

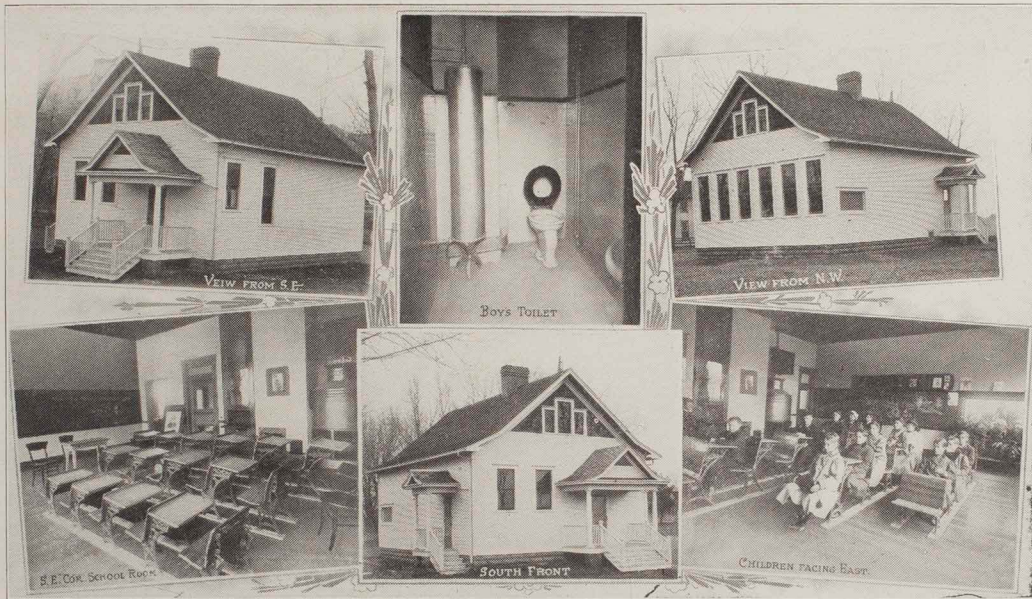
18. Toilet rooms are ventilated into smoke flue. They have no bad odors.
19. Toilet rooms have hot and cold water, wash bowls and toilet bowls.
20. Toilet rooms have glazed cement wainscoting and cement floors.
21. Toilet room floors are drained into cellar, thence into sewer.
22. Toilet rooms enclosed and separated by double walls to deaden sound. Noise of toilet fixtures not heard in school room.
23. Toilet rooms can not freeze up, except by gross negligence long continued.
24. Position and construction of walls, doors and hallways give toilet rooms an air of complete privacy.
25. Each toilet room has direct sun light at noon through outer window and glass in door.
26. Small plate glass in each toilet room floor admits direct sun light to basement.
27. Each room of this school house has direct sun light, yet the children's eyes are protected. Children study by abundance of mild light from the north.
28. This school house is built upon the popular rectangular foundation.
29. Undue appearance of width is overcome by form of roof. Flue may seem a little low. It is yet to have a 6-inch concrete top.
30. This school house is, in all respects, built out of the best available material and in the best possible way. It is therefore thought to be a model in every essential particular. It was not built by contract. The Regents directed the President of the School to purchase material, employ laborers, and build. Cost can therefore be given in detail. With ordinary material and labor such a school house should be built in almost any rural district of Missouri for about \$1200.00. Full specifications will be furnished to Missouri School Boards free of cost.

JOHN R. KIRK,  
President.



SECTION.





A MODEL FOR RURAL SCHOOLS, NORMAL SCHOOL CAMPUS, KIRKSVILLE, MO.

