

NORTHEAST MISSOURI  
STATE TEACHERS COLLEGE

COMMENCEMENT  
PROGRAM



*"Thorough scholastic training lies at the  
foundation of a teacher's education."*

—JOSEPH BALDWIN, Founder.

AUGUST DIVISION  
CLASS OF 1962

NORTHEAST  
MISSOURI STATE TEACHERS  
COLLEGE

---

BOARD OF REGENTS

P. M. MARR, <i>President</i> . . . . .	Milan
J ANDY ZENGE, JR., <i>Vice President</i> . . . . .	Canton
EDWARD E. SWAIN, <i>Secretary</i> . . . . .	Kirksville
HENRY M. BOUCHER . . . . .	Memphis
ELMER F. GIESELMAN . . . . .	Macon
EDWARD R. JAYNE . . . . .	Kirksville
HUBERT WHEELER, <i>ex-officio</i> . . . . .	Jefferson City

---

WALTER H. RYLE, Ph.D., *President*

---

ACTIVITIES OF THE AUGUST DIVISION  
OF THE CLASS OF 1962

ORGANIZATIONAL MEETING . . . . .	WEDNESDAY, JUNE 13
BACCALAUREATE SERVICE . . . . .	SUNDAY, AUGUST 5
GRADUATE BANQUET . . . . .	MONDAY, AUGUST 6
SENIOR BANQUET . . . . .	WEDNESDAY, AUGUST 8
COMMENCEMENT . . . . .	THURSDAY, AUGUST 9

# BACCALAUREATE SERVICE

SUNDAY, AUGUST 5, 1962, 8:00 P.M.

---

DR. PAUL STRUB, *Marshal*

DR. LANSING W. BULGIN, *Assistant Marshal*

---

PRELUDE

PROCESSIONAL—"MARCH IN C" . . . . . *Purcell*  
DR. FREDERIC KIRCHBERGER, Organist

INVOCATION . . . THE REVEREND ALFRED F. SCHUMACHER, '62

THE SUMMER CHORUS

THREE FUGUING TUNES . . . . . *William Billings*

CREATION

WHEN JESUS WEPT

BE GLAD THEN AMERICA

BARNEY ONERHEIM, Student Director

INTRODUCTION OF SPEAKER—PRESIDENT WALTER H. RYLE, Ph.D.

ADDRESS—"KEEP OPEN THE WINDOWS OF YOUR MIND"—

THE REVEREND MARVIN FORTEL

Pastor, First Methodist Church

BENEDICTION . . . THE REVEREND ALFRED F. SCHUMACHER, '62

RECESSIONAL—"MARCH" from *Judas Maccabeus* . . . *Handel*

THE ACADEMIC PROCESSION  
THURSDAY, AUGUST 9, 1962  
FROM KIRK ASSEMBLY ROOM  
TO COLLEGE AUDITORIUM, BALDWIN HALL

---

DR. PAUL STRUB, *Marshal*

DR. LANSING W. BULGIN, *Assistant Marshal*

---

THE PRESIDENT AND THE SPEAKER

THE BOARD OF REGENTS

THE DEAN OF INSTRUCTION AND THE MINISTER

THE FACULTY

CANDIDATES—

MASTER OF ARTS

BACHELOR OF SCIENCE IN EDUCATION

BACHELOR OF SCIENCE

BACHELOR OF ARTS

OUTDOOR PROCESSIONAL—"MARCH OF THE BRAVE"—*Zamecnik*—  
COLLEGE BAND

DR. RICHARD K. WEERTS, Conductor

LAYING OF WREATH AT THE BALDWIN STATUE—

STEPHEN STUART RINABERGER  
Senior President

AUDITORIUM PROCESSIONAL—"WAR MARCH OF THE PRIESTS"—

*Mendelssohn*  
DR. FREDERIC KIRCHBERGER, Organist

# COMMENCEMENT

THURSDAY, AUGUST 9, 1962

10:00 A.M.

---

INVOCATION . . . . . THE REVEREND MARVIN FORTEL  
Pastor, First Methodist Church

THE OMNIPOTENCE . . . . . *Schubert*  
LYLE GRIEP,  $\frac{1}{2}$  Tenor  
DR. FREDERIC KIRCHBERGER, Accompanist

INTRODUCTION OF DISTINGUISHED GUESTS  
AND SPEAKER . . . . . PRESIDENT WALTER H. RYLE, Ph.D.

ADDRESS—"PREPARATION FOR PROBLEM SOLVING"—  
DR. JOHN W. SCHWADA  
Dean of Faculties, University of Missouri

ANNOUNCEMENT OF HONOR  
STUDENTS . . . . . DEAN WRAY M. RIEGER, Ph.D.

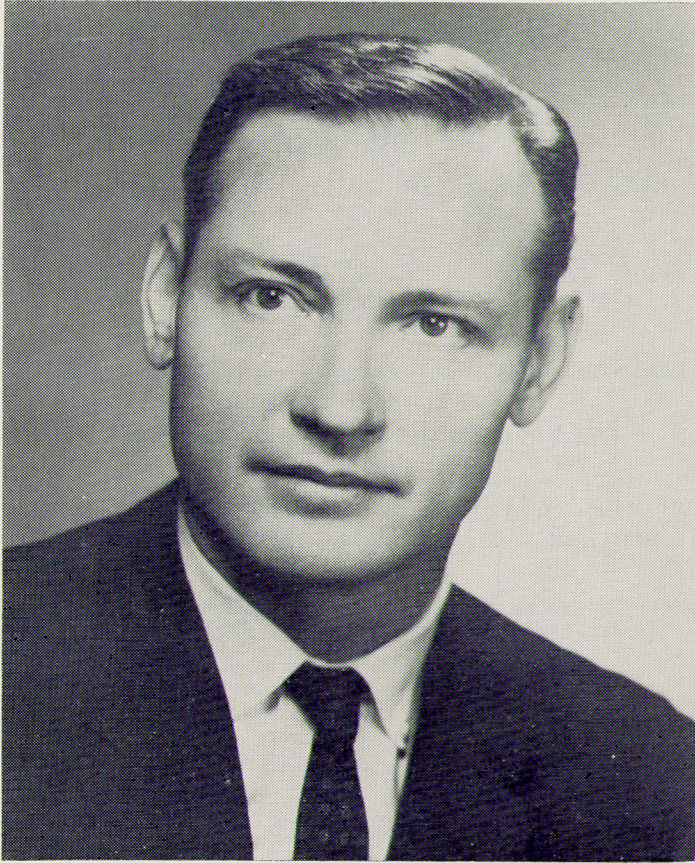
PRESENTATION AND ACCEPTANCE OF CLASS GIFT

CONFERRING OF DEGREES—  
BACHELOR OF ARTS  
BACHELOR OF SCIENCE  
BACHELOR OF SCIENCE IN EDUCATION  
MASTER OF ARTS

COLLEGE HYMN—"OLD MISSOU" . . . . . *Brewer*

BENEDICTION . . . . . THE REVEREND MARVIN FORTEL

RECESSIONAL—"MARCH" from *Aida* . . . . . *Verdi*  
DR. FREDERIC KIRCHBERGER, Organist



Dr. John W. Schwada, Dean of Faculties at the University of Missouri is a 1941 graduate of the Northeast Missouri State Teachers College. He received the masters degree from the University of Missouri in 1947 and the doctor of philosophy degree from the University of Texas in 1951.

He was named to the Political Science Faculty of the University of Missouri in 1951 and now serves as a Professor of Political Science. In addition to his administrative duties he is also serving as the Acting Dean of the School of Business and Administration.

He was granted a leave of absence from the University to serve as Comptroller and Budget Director of the State of Missouri from 1958 through 1961. He presently is a member of the Missouri Commerce and Industrial Development Commission.

Dr. Schwada served as assistant Research Director for Missouri's Reorganization Commission in 1954 and was a state Budgetary Consultant in 1957.

He and his family reside in Columbia.

# THE SENIOR CLASS

---

## BACHELOR OF ARTS

John Lloyd Ault  
Paul L. Johnson

Richard Malcolm Moore

## BACHELOR OF SCIENCE

Stephen Stuart Rinaberger, *Pres.*  
Donald Lee Alexander  
John Earl Beckert  
John Edwin Bruner  
Clark Leslie Christoffersen  
Stephen Joseph Ciska  
Leslie Wayne Collins  
Robert Lloyd Cook  
George Otto Coulson  
Sandra Kay Giachino  
Philip King Goode  
Donald Lee Grim

Raymond Harold Job  
Herbert D. Koenig  
Donald Stuart Lee  
David Michael Pollock  
Larry John Raid  
Roger Lemuel Rouse  
Ruth Emilie Shoemyer  
Roger Evald Soderman  
Stan J. Taylor  
Leland Dale Turner  
Jack Russell Wormington  
James George Zippay

## BACHELOR OF SCIENCE IN EDUCATION

Betty Ann Adkins  
Mary Kay Anderson  
Peggy Sue Angerer  
Beatrice I. F. Au  
Helen Burton Bagby  
Lois Weber Barnett  
James Edward Baxter  
Lois Lucille Beck  
Edward Russell Bennett  
Raymond Joseph Bernard  
Colleen Ann Biby  
Gerald Howard Biby  
Larry Wayne Boleach  
Patrick Donald Bowden  
Ilin G. Bowen  
Mary Louise Bragg  
Joseph Allen Branham  
Marion S. Brush  
Jeanne Burton Buckallew  
Dorothy A. Bue  
Donna Elizabeth Cannon  
Karen Sue Carroll  
Mary Jo Chloupek  
Judith Mitchell Christopher  
Elsie Lynn Clark  
Zella Wright Cochrane  
Robert Lloyd Cook  
Dora Mae Corrick  
Adah Beatrice Coulson  
George Otto Coulson  
Nellie Pauline Davenport

Joan Kay Davis  
Sondra Kay Dewey  
Larry Deane Dinsmore  
Terry Wayne Doss  
Wendell E. Doyle  
Janet Eilene Dubberke  
Elsie B. Dunn  
Linda Jean Durham  
Max Leland Edlen  
Kenneth Michael Evans  
LaRue Bertha Exline  
Roland Edgar Forsythe  
Suzanne Bea Foulkes  
Edith Elizabeth Fowler  
Mary Lucille Freeman  
Sharon Lee Fultz  
Anna Marie Garlock  
Mary Ann Dodd Geisendorfer  
Judith Tharp Geske  
Mary Mercedes Gladbach  
Ann Sue Graham  
Nancy Ann Harding  
Fritzie Gottschalk Hawkins  
Sylvia Viola Huett  
Erskine Dale Hughes  
Josephine L. Hunter  
Wallace J. Inouye  
Robert Jeff Jerman  
Florence Wilcox Jett  
Sylvia Gladys Jones  
Alvin Henry Juergensmeyer Jr.

BACHELOR OF SCIENCE IN EDUCATION—Continued

Margaret Barnes Keller  
Donald Eugene Knott  
William August Kreutzer  
Mary Jo Laffoon  
Chester Finis Latimer  
Mary Roberta Latimer  
Betty Mills Lawrence  
Dorothy Slocum Lawson  
Betty June Lehr  
Rebecca Jane Leslie  
Clyde Raymond Lincoln  
Avis Ilene Lindley  
Harold Andrew Lowe  
Lyell Mitchell Magruder  
Valee B. Matheson  
Thelma Shilt May  
Margaret Schindler McCarty  
Marilyn May McElyea  
Mary Jo Reed McGowan  
John William McMickle  
Irma Burrus McRobert  
Sandra Lee Collins Merringer  
Annie Pearl Meyer  
Evan Meryle Mikel  
Marilyn Olson Miles  
Marilyn Rose Miller  
Anita Mae Minor  
Lanny Charles Morley  
Mittie Ann Mosley  
Eugene Edward Moss  
Ellen Kaye Murphy  
Dolores Jean Musgrave  
Margaret Marilyn Newcomb  
Mary Ellen Ruby Northup  
George Richard Parker  
Icil Anne Parks  
Carolyn Martha Premer  
Lloyd Gene Premer  
James Orval Preston

Dena H. Priebe  
Paul John Purcell  
Helen Celine Rallita  
Frances Elizabeth Ratliff  
Laura Elizabeth Rauh  
Gerald M. Reisinger  
Herman Keith Rekittke  
Francis Ray Ridgway  
Anna Gradner Rowe  
Graceann Ruffino  
Marie Schmidt  
Alfred F. Schumacher  
James W. Shade  
Helen Yoshiko Shiroma  
Marcella Jean Siegal  
Anna Marie Sisson  
Kathryn Lucile Smith  
Rita Gottman Sorth  
Louis Spinelli  
Glenna Lavonne Stewart  
Dee Ann Stine  
Hazel Cooper Stone  
Evelyn Jennett Taylor  
Elizabeth Darlene Thompson  
Leah Rebecca Thrasher  
Patricia Ann Totty  
Jewel Marion Traxler  
Mary Elizabeth Walton  
Eleanor Ann Waterman  
Shirley DeYon Weber  
Donald Roger Wescott  
Annabelle Buchanan White  
Linda Ann Wickless  
Marie E. Rogers Wilfawn  
Lynn Jay Wolfmeyer  
Rosemary Woodward  
Neta Cora Years  
Edna Lorraine York

## MASTER OF ARTS

---

- HILDA E. ATKINSON . . . . . Business Education  
B.S. in Education, Northeast Missouri State Teachers College, 1937
- KENNETH RAY AUSMUS . . . . . Secondary School Administration  
B.S. in Education, Northwest Missouri State College, 1951
- DALE CHESTER BAGLEY . . . . . General Science Education  
B.S. in Education, Northeast Missouri State Teachers College, 1962
- KENNETH DUANE BARKER . . . . . Special Education  
B.S. in Education, Northeast Missouri State Teachers College, 1956
- MARY LOU BARKER . . . . . Elementary Education  
A.B., Iowa Wesleyan College, 1957
- WILLIAM T. BARTON, III . . . . . Secondary School Administration  
B.S. in Education, Northeast Missouri State Teachers College, 1957
- ELSIE FRYLING BIBEE . . . . . Teaching of Reading  
B.S., University of Delaware, 1944
- DONALD JOSEPH BOLLER . . . . . City School Administration  
B.S. in Education, Northeast Missouri State Teachers College, 1962  
B.S., Northeast Missouri State Teachers College, 1959
- VELMA F. SUMMERS BOWEN . . . . . Elementary Education  
B.S. in Education, Northeast Missouri State Teachers College, 1959
- ROBERT GENE BOWERS . . . . . City School Administration  
B.S. in Education, Northeast Missouri State Teachers College, 1959
- JANE COMEY BRIDGES . . . . . English Education  
A.B., Northeast Missouri State Teachers College, 1958  
B.S. in Education, Northeast Missouri State Teachers College, 1958
- MINERVA MAXWELL BROWN . . . . . Elementary School Administration  
B.S. in Education, Northeast Missouri State Teachers College, 1961
- SHARON BROWNING . . . . . Business Education  
B.S. in Education, Northeast Missouri State Teachers College, 1960
- GERALD WILLIAM BURDITT . . . . . Physical Education  
B.S. in Education, Northeast Missouri State Teachers College, 1960
- THOMAS MARTIN BURKHART . . . . . Secondary School Administration  
B.S. in Education, Northeast Missouri State Teachers College, 1955
- FRANCES ELIZABETH CARR . . . . . Elementary Education  
B.S. in Education, Northeast Missouri State Teachers College, 1941
- LAWRENCE O. CHRISTENSON . . . . . History  
B.S. in Education, Northeast Missouri State Teachers College, 1960  
THESIS: *Agricultural Legislation in the 80th Congress*
- DANIEL EDWIN CHRISTY . . . . . Music Education  
B.S. in Education, Northeast Missouri State Teachers College, 1960
- PAUL JUNIOR COOPER . . . . . Secondary School Administration  
B.S. in Education, Northeast Missouri State Teachers College, 1962

## MASTER OF ARTS—Continued

- RUSSELL W. COOPER . . . . . History  
A.B., Culver-Stockton College, 1952
- CORA EMMERSON COULSON . . . . . Guidance  
B.S. in Education, University of Missouri, 1930
- WILLIAM EDWARD CRABTREE . . . . . Industrial Education  
B.S. in Education, Northeast Missouri State Teachers College, 1957
- ROGER WAYNE CROOKS . . . . . Social Science Education  
B.S. in Education, Northeast Missouri State Teachers College, 1961
- PUSHPA K. DALAL . . . . . Elementary Education  
B.S. in Home Science, Maharaja Soyajirao University, Baroda, India, 1956  
M.Sc., Maharaja Soyajirao University, Baroda, India, 1959
- JOE LOREN DAVIS . . . . . Guidance  
B.S. in Education, Northwest Missouri State College, 1959
- EDWARD THOMAS DUDEN, JR. . . . . City School Administration  
B.S. in Education, Northeast Missouri State Teachers College, 1954
- VIRGINIA FOWLER DURDEN . . . . . General Science Education  
A.B., William Jewell College, 1940
- FRED SANTFORD EAGAN . . . . . Physical Education  
B.S. in Education, Arizona State College, 1952
- RICHARD LEON EITEL . . . . . Guidance  
B.S. in Education, Northeast Missouri State Teachers College, 1959
- LLOYD EDWARD ESTES . . . . . City School Administration  
B.S. in Education, University of Missouri, 1946
- JEROME LEON EVANS . . . . . City School Administration  
B.S. in Education, Northeast Missouri State Teachers College, 1955
- JOSEPH POWELL FERGUSON . . . . . Secondary School Administration  
A.B., Parsons College, 1954
- DONALD DWAIN FORMAN . . . . . Secondary School Administration  
B.S. in Education, Northeast Missouri State Teachers College, 1957
- GRACE FOWLER . . . . . Elementary Education  
B.S. in Education, Northeast Missouri State Teachers College, 1958
- VADA LOUISE GARDNER . . . . . English Education  
B.S. in Education, Northeast Missouri State Teachers College, 1959
- EUNICE N. GOODWIN . . . . . City School Administration  
A.B., State College of Iowa, 1954
- LARRY DEAN GORDON . . . . . Physical Education  
B.S. in Education, Northeast Missouri State Teachers College, 1959  
THESIS: *The Roll of Religion in Physical Education*
- JERRY SANFORD GREENE . . . . . Guidance  
B.S. in Education, Northeast Missouri State Teachers College, 1955

## MASTER OF ARTS—Continued

- MILDRED LOUISE GREGORY . . . . . Guidance  
A.B., Meredith College, 1944
- BILL WARREN GRONEMYER . . . . . Guidance  
A.B., Bethany-Peniel College, 1957
- GEORGE FRANCIS GRUENDEL . . . . . City School Administration  
B.S. in Education, Quincy College, 1955
- BEVERLY SHEPHERD HALL . . . . . Music Education  
Bachelor of Music, Culver-Stockton College, 1952  
THESIS: *Music Activities in the Primary Grades*
- LEOLA CLIFTON HARRIS . . . . . Elementary School Administration  
B.S. in Education, University of Missouri, 1936
- ROBERT ELWOOD HARRIS . . . . . Guidance  
B.S. in Education, Northeast Missouri State Teachers College, 1960
- BERYL DEAN HART . . . . . Business Education  
B.S. in Education, Northeast Missouri State Teachers College, 1959
- MILTON EUGENE HENDRIX . . . . . General Science Education  
A.B., Culver-Stockton College, 1952  
B.S. in Education, Northeast Missouri State Teachers College, 1955  
THESIS: *Potability of Well Water*
- JERALD EDWARD HICKEY . . . . . Social Science Education  
A.B., State University of Iowa, 1959  
THESIS: *Contrasting of Delinquency Areas in Relationship to the  
School System of Des Moines, Iowa*
- BERTHA BARNES HILLER . . . . . History  
B.S., Culver-Stockton College, 1956
- GLENNUS CECIL HINDERS . . . . . Guidance  
A.B., Buena Vista College, 1958
- KLAUS DIETER HOFFMANN . . . . . English Education  
Pedagogische Akademie, Dortmund, Germany, 1961  
THESIS: *Problems in the Teaching of Structural German*
- DOROTHY JEAN HOFFNER . . . . . Elementary School Administration  
B.S. in Education, Northeast Missouri State Teachers College, 1953
- WALLY EUGENE HORN . . . . . Industrial Education  
B.S. in Education, Northeast Missouri State Teachers College, 1958  
THESIS: *A Study of Industrial Arts Teacher-Athletic Coach Combination in Iowa*
- WILLIAM HOSKINS . . . . . Social Science Education  
B.S. in Education, Northeast Missouri State Teachers College, 1960
- MARGARET NADINE HOWE . . . . . Elementary School Administration  
B.S. in Education, Northeast Missouri State Teachers College, 1958
- DON LEON HOWERTON . . . . . Guidance  
B.S. in Education, University of Missouri, 1960
- HAROLD ROY HUFFORD . . . . . Physical Education  
A.B., Iowa Wesleyan College, 1958

## MASTER OF ARTS—Continued

- ANNA M. IRENE HUMPHREYS . . . . . Elementary Education  
B.S. in Education, Northeast Missouri State Teachers College, 1958
- JANE HUEI-CHEN CHIANG HWANG . . . . . English Education  
B.S., Taiwan Normal University, Taiwan, China
- RICHARD GENE ISETT . . . . . History  
B.S. in Education, Northeast Missouri State Teachers College, 1960
- WILLIAM LEO JACQUES . . . . . Guidance  
B.S. in Education, Northeast Missouri State Teachers College, 1957
- MARTHA JOANN JENKINS . . . . . Guidance  
B.S. in Education, Northeast Missouri State Teachers College, 1960
- DON HUGH JOHNSON . . . . . Secondary School Administration  
B.S. in Education, Northeast Missouri State Teachers College, 1956
- HOBERT LEON JOHNSON . . . . . Guidance  
B.S. in Education, Washington University, 1956
- JOE MYERS JOHNSON . . . . . Guidance  
B.S. in Education, Northeast Missouri State Teachers College, 1958
- HAROLD EDWARD KEIDEL . . . . . Guidance  
B.S. in Education, Northeast Missouri State Teachers College, 1956
- DONALD RICHARD KERR . . . . . Guidance  
A.B., William Penn College, 1959
- WILMA PAULINE KETCHUM . . . . . Elementary School Administration  
B.S. in Education, Southeast Missouri State College, 1942
- MARGUERITE MORGAN KING . . . . . Elementary School Administration  
B.S. in Education, University of Missouri, 1937
- KENNETH GOODSON KOEPPE . . . . . City School Administration  
B.S., Northeast Missouri State Teachers College, 1951  
B.S. in Education, Northeast Missouri State Teachers College, 1951
- JOHN DAVID KOSCIELSKI . . . . . Physical Education  
A.B., Culver-Stockton College, 1959  
THESIS: *Survey of Recreational Facilities in Quincy, Illinois*
- MARGARET LOIS LANGSTADT . . . . . Guidance  
B.S. in Education, Northwest Missouri State College, 1936
- GLEN VERLIN LISTER . . . . . Guidance  
B.S. in Education, Northeast Missouri State Teachers College, 1959
- DAVID NORMAN LYNCH . . . . . Guidance  
Bachelor of Business Administration, State University of Iowa, 1960  
B.S. in Education, Northeast Missouri State Teachers College, 1961
- FORREST GAIL MASSEY . . . . . City School Administration  
A.B., Simpson College, 1949

## MASTER OF ARTS—Continued

- ROY MAYFIELD . . . . . English Education  
 A.B., Northeast Missouri State Teachers College, 1958  
 B.S. in Education, Northeast Missouri State Teachers College, 1958
- MARY ELLEN McCABE . . . . . Elementary School Administration  
 B.S. in Education, Northeast Missouri State Teachers College, 1957
- DONNA EVELYN MCKEE . . . . . Elementary Education  
 B.S. in Education, Northeast Missouri State Teachers College, 1952
- ILA FERN McROBERT . . . . . Elementary School Administration  
 B.S. in Education, Northeast Missouri State Teachers College, 1958
- FREDDIE JAMES MERRELL . . . . . Physical Education  
 A.B., William Jewell College, 1955
- RICHARD THOMAS MILLER . . . . . English Education  
 B.S. in Education, Northeast Missouri State Teachers College, 1959
- STANLEY CARL MILLER . . . . . Guidance  
 B.S., Parsons College, 1948
- WILLIAM MORRIS MILLS . . . . . Physical Education  
 B.S. in Education, Northeast Missouri State Teachers College, 1958
- RICHARD OMER MOORE . . . . . Physical Education  
 B.S. in Education, Western Illinois State College, 1960
- HAROLD CALVERT MOREHEAD . . . . . Physical Education  
 B.S. in Education, Northeast Missouri State Teachers College, 1957
- KENNETH EDWARD MOSLEY . . . . . Secondary School Administration  
 B.S. in Education, Northeast Missouri State Teachers College, 1951
- LOUIS D. MOSS . . . . . Guidance  
 B.S. in Education, Northeast Missouri State Teachers College, 1957
- H. K. MYERS . . . . . City School Administration  
 B.S. in Education, Northeast Missouri State Teachers College, 1956
- CECIL HENRY NAYLOR . . . . . Physical Education  
 B.S. in Education, Missouri Valley College, 1956
- ERVIN LEROY NEFF . . . . . Secondary School Administration  
 B.S. in Education, Northeast Missouri State Teachers College, 1958
- JAMES ROBERT NEWMAN . . . . . Industrial Education  
 B.S. in Education, Northeast Missouri State Teachers College, 1955  
 THESIS: *Requirements of Individual Institutions For The Baccalaureate  
 Degree in Industrial Education*
- SAMUEL WILLIAM NUGENT . . . . . Physical Education  
 B.S. in Education, Arkansas State College, 1961
- RUTH DALTON OGDEN . . . . . Elementary Education  
 B.S. in Education, Northeast Missouri State Teachers College, 1937
- HARVEY WESLEY ORDELHEIDE . . . . . Guidance  
 B.S. in Education, Washington University, 1957

## MASTER OF ARTS—Continued

- RAMAH MCNABB PEEK . . . . . Business Education  
B.S. in Education, Northeast Missouri State Teachers College, 1939
- LYNN WADE PEMBERTON . . . . . General Science Education  
A.B., Knox College, 1939  
THESIS: *Inter-Glacial Streams in West Central Illinois*
- JACK MILTON PERRIN . . . . . Physical Education  
B.S. in Education, Northeast Missouri State Teachers College, 1960  
THESIS: *Adjusted Kirksville Wing-T For High School Instruction*
- RUTH DARLENE PETERSON . . . . . Music Education  
B.S. in Education, Northeast Missouri State Teachers College, 1960  
THESIS: *An Investigation of The General Music Program in the Public  
Secondary Schools of Missouri*
- KRISS WILLIAM PHILIPS . . . . . City School Administration  
B.S. in Education, Northeast Missouri State Teachers College, 1960
- JAMES CLEMENT PHILLIPS . . . . . Physical Education  
B.S. in Education, Northeast Missouri State Teachers College, 1959
- OLGA S. PINNEY . . . . . Elementary School Administration  
B.S. in Education, Northeast Missouri State Teachers College, 1959
- BEN EUGENE PITNEY . . . . . Physical Education  
B.S. in Education, Northeast Missouri State Teachers College, 1955  
THESIS: *Factors Affecting The Hiring and Dismissal of Basketball  
Coaches in Selected Illinois Secondary Schools*
- JOHN ARTHUR POTTER . . . . . Industrial Education  
B.S. in Education, Northeast Missouri State Teachers College, 1956  
THESIS: *Vocational Training At Fort Madison State Penitentiary*
- DONALD LEE RAICHE . . . . . Guidance  
B.S. in Education, Northeast Missouri State Teachers College, 1961
- CAROLE CLARA RAY . . . . . Business Education  
B.S. in Education, Northeast Missouri State Teachers College, 1961
- MARY ETTA RICHARDS . . . . . Elementary Education  
B.S. in Education, Northeast Missouri State Teachers College, 1957
- EDITH MAY RICHARDSON . . . . . Elementary Education  
B.S. in Education, Northeast Missouri State Teachers College, 1958
- KENNETH DUANE RIDDLE . . . . . Guidance, Industrial Education  
B.S. in Education, Northeast Missouri State Teachers College, 1961
- LAYTON KENNETH ROBERTS . . . . . Physical Education  
B.S. in Education, Northeast Missouri State Teachers College, 1958
- DAISY P. ROBINSON . . . . . Elementary Education  
B.S. in Education, Northeast Missouri State Teachers College, 1959
- ROBERT KELLEY ROGERS . . . . . City School Administration  
B.S. in Education, Northeast Missouri State Teachers College, 1961

## MASTER OF ARTS—Continued

- JOHN HUGH ROSS . . . . . City School Administration  
B.S., Northeast Missouri State Teachers College, 1956
- EDWARD KEITH ROYSE . . . . . Industrial Education  
B.S. in Education, Northeast Missouri State Teachers College, 1958
- JOE VAUGHN SADLER . . . . . Industrial Education  
B.S. in Education, Northeast Missouri State Teachers College, 1950  
THESIS: *The Value of Instruction Sheets in Teaching Mechanical Drawing*
- WILLIAM AMBERSE SAPP . . . . . Elementary School Administration  
B.S., Carthage College, 1962
- RAYMOND ALFRED SCHEITER . . . . . Secondary School Administration  
B.S., Culver-Stockton College, 1958
- DARWIN GALE SCHISLER . . . . . Secondary School Administration  
B.S. in Education, Western Illinois State Teachers College, 1959
- ADA EUGENIA PHILLIPS SCHMID . . . . . Elementary School Administration  
B.S. in Education, Northeast Missouri State Teachers College, 1948
- WILLIAM AMOS SELF . . . . . Guidance  
B.S. in Agriculture, Northwestern Louisiana State College, 1951
- RAM SEWAK . . . . . Social Science Education  
B.S. in Education, Northeast Missouri State Teachers College, 1960
- PARVANEH SHAGHAFI . . . . . Social Science Education  
B.S., University of Tehran, Iran, 1957
- GARY DALE SHARPE . . . . . City School Administration  
B.S. in Education, Northeast Missouri State Teachers College, 1961
- LOYD VINCIL SHARPE . . . . . City School Administration  
B.S. in Education, Northeast Missouri State Teachers College, 1959
- JERRY WAYLAND SIEGRIST . . . . . Guidance  
A.B., Iowa Wesleyan College, 1957
- FRANK ALLEN SMITH . . . . . Guidance  
B.S. in Education, Northeast Missouri State Teachers College, 1961
- REGINALD GAINS SPEAK . . . . . Physical Education  
B.S., Peru, Nebraska, State Teachers College, 1955
- ROBERT LYLE SPIDLE . . . . . Guidance  
B.S. in Business Administration, Simpson College, 1950
- RALPH CLAYTON STERRETT . . . . . Physical Education  
B.S. in Education, Northeast Missouri State Teachers College, 1961
- MYRTLE HASHAGEN STILL . . . . . Elementary Education  
B.S. in Education, Central Missouri State College, 1956
- FRED WALLACE STONE . . . . . Elementary School Administration  
B.S. in Education, Northeast Missouri State Teachers College, 1961

## MASTER OF ARTS—Continued

- LARRY VERNON SWIFT . . . . . Physical Education  
B.S. in Education, Northeast Missouri State Teachers College, 1961
- JACQUELYN CAROLE SYKES . . . . . Mathematics Education  
B.S. in Education, Northeast Missouri State Teachers College, 1957
- DONALD EDWARD SYLVARA . . . . . Physical Education  
B.S. in Education, Northeast Missouri State Teachers College, 1955
- FRANCIS EDWARD TEMPELMAN . . . . . Business Education  
B.S., Northeast Missouri State Teachers College, 1958  
B.S. in Education, Northeast Missouri State Teachers College, 1958
- HAROLD EUGENE THORNE . . . . . Guidance  
A.B., Parsons College, 1958
- BERYL EDWIN THURMAN . . . . . City School Administration  
B.S. in Education, Northeast Missouri State Teachers College, 1960
- BOBBIE KENNETH TWITCHELL . . . . . Secondary School Administration  
B.S. in Education, Northeast Missouri State Teachers College, 1958
- RICHARD LEE VAN DYNE . . . . . Secondary School Administration  
B.S. in Education, Northeast Missouri State Teachers College, 1961
- CURTIS WILLIAM VAN GILDER . . . . . Secondary School Administration  
B.S. in Education, Northwest Missouri State College, 1960
- GEORGE ALBERT VAUGHN . . . . . City School Administration  
B.S. in Education, Northeast Missouri State Teachers College, 1959
- HENRY VLASTUIN . . . . . Elementary School Administration  
B.S., Augustana College, 1958
- HILDA RUTH MATTINGLEY WADDILL . . . . . Elementary Education  
B.S. in Education, Northeast Missouri State Teachers College, 1944
- MARY SHIRLEY WAGGONER . . . . . History  
B.S. in Education, Northeast Missouri State Teachers College, 1951
- WANDA ELAINE WALKER . . . . . Elementary Education  
B.S. in Education, Arkansas State College, 1955
- HARRY ALFRED WALMSLEY . . . . . Physical Education  
B.S. in Education, Northeast Missouri State Teachers College, 1961
- DALE G. WATT . . . . . Secondary School Administration  
A.B., William Penn College, 1959
- BILLY FRANCIS WHITE . . . . . Business Education  
B.S. in Education, Northeast Missouri State Teachers College, 1956
- JERRY DUANE WHITESIDES . . . . . Physical Education  
B.S. in Education, Northeast Missouri State Teachers College, 1959
- EVAH CARLENE WILLIAMS . . . . . Elementary Education  
B.S. in Education, Northeast Missouri State Teachers College, 1958

MASTER OF ARTS—Continued

- THRESSA MARIE WILLIAMS . . . . . Guidance  
B.S. in Education, Northeast Missouri State Teachers College, 1959
- REVA SINGLEY WILLINGHAM . . . . . Business Education  
B.S. in Education, Central Missouri State College, 1941
- GEORGE ROBERT WILSON . . . . . Physical Education  
A.B., Culver-Stockton College, 1960
- CHARLES ANDREW WOODS . . . . . Industrial Education  
B.S. in Education, Northeast Missouri State Teachers College, 1956  
*THESIS: A Suggested Fire Prevention and Control Program For Industrial Arts Shops*
- DONALD EUGENE WORSTER . . . . . Physical Education  
A.B., Simpson College, 1956

AUGUST DIVISION OF THE CLASS OF 1962  
UNDERGRADUATE CLASS

---

OFFICERS

STEPHEN STUART RINABERGER, *President*  
RICHARD ELLES SCHUTZE, *Vice President*  
ELLEN KAYE MURPHY, *Secretary-Treasurer*  
DEE ANN STINE, *Councilwoman*  
DONALD LEE GRIM, *Councilman*

COMMITTEES

BANQUET

DALE RANKIN, *Ch*  
JAMES CLYDE OWEN, *Co-Ch*  
SONDRA KAY DEWEY  
SANDRA KAY GIACHINO  
DWIGHT NEAL HART  
MARY JO REED MCGOWAN  
DELORES JEAN MUSGRAVE  
KENNETH GEORGE STARK  
JACK RUSSELL WORMINGTON

DECORATIONS

RICHARD MOORE, *Ch*  
LOIS LUCILLE BECK  
JUDITH MITCHELL CHRISTOPHER  
LINDA JEAN DURHAM  
ANN SUE GRAHAM  
LELAND FRANK HAHN  
BERNARD WAYNE MUSHOLT  
PAUL JOHN PURCELL  
WAYNE SUTTER

CAPS AND GOWNS

LYNN JAY WOLFMAYER, *Ch*  
JERRY JOE BISSEL  
LOUIS CONRAD BYERS  
WENDELL E. DOYLE  
SUZANNE BEA FOULKES  
LARRY EUGENE GARDNER  
DONALD KEITH McANULTY  
BILLIE LOU QUEEN

SPONSORS

DR. WRAY M. RIEGER, *Dean of Instruction*  
MRS. NITA PATTERSON, *Instructor of Fine Arts*

AUGUST DIVISION OF THE CLASS OF 1962  
GRADUATE CLASS

---

OFFICERS

EDWARD THOMAS DUDEN, JR., *President*  
RICHARD CHURCHILL NOVINGER, *Vice President*  
DOROTHY JEAN THARP, *Secretary*  
MARTHA RAE COKERHAM, *Treasurer*  
MARTHA JOANN JENKINS, *Councilwoman*  
ROBERT KELLEY ROGERS, *Councilman*

COMMITTEES

BANQUET

MARY LOU BARKER, *Ch*  
LEOLA CLIFTON HARRIS  
DOROTHY JEAN HOFFNER  
MARGARET NADINE HOWE  
MARGUERITE MORGAN KING  
ROBERT KELLEY ROGERS  
WILLIAM AMBERSE SAPP  
FRED WALLACE STONE  
RICHARD LEE VAN DYNE

DECORATIONS

KRISS WILLIAM PHILIPS, *Ch*  
SHARON BROWNING  
ROY MAYFIELD  
RUTH DARLENE PETERSON  
JOSEPH POLAK  
JACK GROVER RANNEY  
HARRY ALFRED WALMSLEY  
EVAH CARLENE WILLIAMS

CAPS AND GOWNS

LLOYD EDWARD ESTES, *Ch*  
ROBERT GENE BOWERS  
PAUL JUNIOR COOPER  
GEORGE FRANCIS GRUENDEL  
MARTHA JOANN JENKINS  
MARY ELLEN McCABE  
ILA FERN McROBERT  
GEORGE ALBERT VAUGHN  
HILDA RUTH MATTINGLEY WADDILL

SPONSOR

DR. IVAN E. MILLER, *Head, Division of Education*



## “OLD MISSOU”

“Old Missou” and “Old Missouri,”

And thou our love hath won,

Fondly cling thee to the mem’ry

Of old “Missouri’s Son.”

Gladly thee our hearts we tender

By the dim and flick’ring light,

Every lad a proud defender

Of the Purple and the White.

—BASIL BREWER, '01.