

NORTHEAST MISSOURI
STATE TEACHERS COLLEGE

COMMENCEMENT
PROGRAM



*"Thorough scholastic training lies at the
foundation of a teacher's education."*

—JOSEPH BALDWIN Founder.

AUGUST DIVISION
CLASS OF 1964

NORTHEAST
MISSOURI STATE TEACHERS
COLLEGE

BOARD OF REGENTS

P. M. MARR, *President* MILAN
ELMER F. GIESELMAN, *Vice President* MACON
EDWARD R. JAYNE, *Secretary* KIRKSVILLE
GLENN BOLTON LANCASTER
ROLLINS H. BROWNLEE BROOKFIELD
MARY ALICE BUNNEY SHELBYVILLE
HUBERT WHEELER, *ex-officio* JEFFERSON CITY

WALTER H. RYLE, Ph.D., *President*

ACTIVITIES OF THE AUGUST DIVISION
OF THE CLASS OF 1964

ORGANIZATIONAL MEETING WEDNESDAY, JUNE 10
BACCALAUREATE SERVICE SUNDAY, AUGUST 9
GRADUATE BANQUET MONDAY, AUGUST 10
SENIOR BANQUET WEDNESDAY, AUGUST 12
COMMENCEMENT THURSDAY, AUGUST 13

BACCALAUREATE SERVICE

SUNDAY, AUGUST 9, 1964, 8:00 P.M.

MR. RALPH E. SHAIN, *Marshal*

MR. MELVIN L. OLSON, *Assistant Marshal*

PRELUDE

PROCESSIONAL—"SWISS NOEL" *Daquin*
DR. FREDERICK FREEBURNE, Organist

INVOCATION . . . THE REVEREND HARRY DUVAL LOSSING, '64

THE SUMMER CHORUS

"HOW LOVELY IS THY DWELLING PLACE"
(FROM *German Requiem*) *Brahms*

"THE GLORY OF GOD THUNDERETH" *Hovhaness*

DR. DALE A. JORGENSEN, Director

INTRODUCTION OF SPEAKER . . . PRESIDENT WALTER H. RYLE

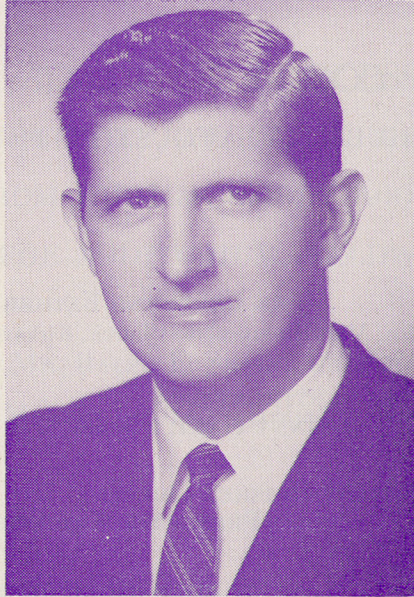
ADDRESS—"GOD'S LAW IN MODERN SOCIETY"—

THE REVEREND FATHER FRED J. YEHLE
Pastor, Mary Immaculate Church, Kirksville

BENEDICTION . . . THE REVEREND HARRY DUVAL LOSSING, '64

RECESSIONAL—"AIR IN A MINOR" *Bach*

The audience will please remain in place until the entire Academic Procession has left the auditorium.



BURLEIGH ARNOLD, L.L.B.

Burleigh Arnold was born in 1931 in Lewistown, Missouri. He attended the public schools of Lewistown and graduated from high school in the spring of 1949. He entered Northeast Missouri State Teachers College and graduated in Business Administration and Speech, receiving a B.S. degree in Education with the Class of 1952. He entered the University of Missouri and earned his degree in Law (L.L.B) in 1955.

After graduation from Law School, he served in the United States Army and was on the Army's Legal Staff in Washington, D. C., until 1957 and is presently a 1st Lieutenant in the U.S.A.R.

In 1957, he was appointed by Governor James T. Blair, Jr., as Probate and Magistrate Judge in Schuyler County and was also an instructor at Northeast Missouri State Teachers College at that time.

In May, 1958, he resigned his position as Probate and Magistrate Judge to accept an appointment as a State Assistant Attorney General. He served in this capacity until he was selected by Governor John M. Dalton to be his Administrative Assistant. He held this position during the first year of Governor Dalton's administration and resigned in January, 1962, to accept a position as Vice President and Trust Officer for the Central Missouri Trust Company, Jefferson City, Missouri.

Mr. Arnold is a member of the Baptist Church, Masonic Lodge, Kiwanis Club, Who's Who in American Universities and Colleges, Sigma Tau Gamma social fraternity, and on the Board of Directors of the Frontier Life Insurance Company.

He is married to the former Mary Brookhart and they have two sons and one daughter.

THE SENIOR CLASS

BACHELOR OF ARTS

William Henry Purdy (President)
Francis Hood Corson
Gail Bruce Crump
John Harold Dromey
William Douglas Edwards

Charles Marion Fugate
Marianna Giovannini
James Lanier Perine
Wesley Aaron Scott
Sandra Marie Siefer

BACHELOR OF SCIENCE

Richard R. Beelendorf
Edward Albert Bruns
Mary Kelly Bruns
Ruben Lee Buwalda
Ki C. Chang
Stephany Gay Chromoga
Ina Exon Cloyd
Oscar Russell Cook
Robert Caesar Corno
Larry Frederick Dennison
Kenneth Dean Eldridge
Gary Gene Haage
Delbert Eugene Heifner
Charles Martin Hunt
Ebrahim G. Jabbari

Randell Thomas Jones
Jerry Morris Kelley
Pete Earl Lackey
Sheryl Ann Malloy
Mary Jane Marx
Gary Lea McDonald
Gary Allen Mitchell
Larry Dale Porter
George Byron Simon
Viva Ellen Sterner
David Paul Uskudarli
William Francis Wernimont
Lela May Wiley
Gertrude Hulda Williams

BACHELOR OF SCIENCE IN EDUCATION

Robert Joseph Aholt
Mary Carl Alexander
Beula P. Anderson
Doris Avalee Anderson
Joyce B. Anderson
Dorothy May Anesi
Pearlie Mae Applegate
Harriet Hampton Barber
Mary Flo Barnett
Anna Madeline Bassett
Stanley F. Bates
Mollie R. Beach
Harry Glenn Bengtson
Leroy Berry
William Franklin Berry
LaVeta Marie Bevans
Carolyn Ann Bohon
William Eugene Branscom
Carolyn Sue Brenizer
Sharon Louise Brinegar
Beulah Corine Britton
Donna Frances Brown

Olivia Kay Rose Burns
Donna Julia Buttz
Edith Mae Buwalda
Carolyn Sue Callaham
Eunice Jewel Cary
Suzanne Kathryn Chamberlin
Margaret Karen Christensen
Margaret Ellen Clarke
Glen Allen Cochran
Letha Mae Cochran
Larry Eugene Collins
Violet Adaline Compton
Robert Lewis Cook
Larry Von Coy
Gail Bruce Crump
LaNora Lee Davis
Robert Price Davis
Gerald Lynn Deardorff
Dorothy P. Dierks
Delmar Clayton Dowd
Joe D. Downs
Eileen Louise Drescher

BACHELOR OF SCIENCE IN EDUCATION—Continued

Robert Charles Fessler
Judith Faye Fisher
Joan Sue Galbraith
Rickey Allen George
Peggy Lou Giltner
Marianna Giovannini
Marvin Wayne Greiwe
Donna Mae Hackney
Carolyn Ruth Hackworth
Karen Lynn Hallgren
Mary Eileen Hampton
Dennis Joseph Hanisch
Patricia Ann Hediger
Judith Louise Guinn Hoer
Jerre Don Holloway
Donna Gayle Hulse
Janice Olson Hunt
Frances Bernadine Jacobs
Karen Ruth Jacobs
Alice Jeanette Johnson
Flora Eva Jones
Mildred Ann Knowles
Raymond William Kruel
Michaela Kaye McClure Kursar
Sondra Kay Fitzgerald Liebhart
Mildred Louise Hammons Love
Janice Marie Lox
John Charles Lucas
Dorothy Choy-Yuk Luey
John David Lundgren
Anna Lurena Mabce
Betty Jean Bond Manley
Robert Eugene McCarl
Myrtle Rose McHenry
Valee McKinley
Rosemary Kathleen McMillen
Claudean Mohr
Dixie Lee Mohr
Russell P. Moore, Jr.
Sharon Elaine Moore
Helen Marie Morrison
Cheryl Jean Mossbarger
Harvey Carl Mueller
Barbara June Mullins
Neva Vaughn B. Noll
Natile Faye Oglesby
Rosemary E. Priester
David Alfred Rae
Glen Edward Randall
Phyllis Ann Wells Rice
Hazel Ferne Roberts
Loisbel Robinson
Christine Marie Rockhold
Nancy Lynette Rumpff
Jon Robert Sadler
Kamran Sandjari
Florence Agnes Schultz
Dorothy Mildred Secrest
Lena Ann Selix
Linda Anne Wallace Shanks
Edward Samuel Shapiro
Regine Lois Shigenaga
Sandra Marie Siefer
Yonlene G. L. Lau Simpson
Alice Marie Slavin
Nancy Euceba Smith
Max L. Sparks
Carl Franklin Spaur
Norma Lou Spellman
Carolyn Sue Stees
Enid Leona Stober
Constance Anne Terry
Shirley Jean Thomas
LaVonee Bernice Thornton
Geneva May Till
Shirley Jean Townsend
Judy Mae Trueblood
Madeline Walton
Frank Lowell Watson
Harriett Elaine Weaver
John Anthony Weibel
Dixie Gay Weidner
Garry Pearl Wells
Farrel Loney Whitney
Jeanne Daily Wilson
Beverly Rae Wilt
Ada Frances Wingate
Lodena Dale Wood
Lilah Inez Yates

THE GRADUATE CLASS

MASTER OF ARTS

- JAMES ROSS FARR . Special Education (Teaching Mentally Retarded Children)
B.S. in Education, Northeast Missouri State Teachers College, 1963
- PEGGY ANNE ACHELPOHL Secondary Education (Business Education)
B.S. in Education, Northeast Missouri State Teachers College, 1958
- HARLEY EDWARD ALMOND Secondary Education (Business Education)
B.S. in Education, Northeast Missouri State Teachers College, 1960
- WENDELL DEAN ARMSTRONG Secondary Education (Business Education)
B.S. in Education, Northeast Missouri State Teachers College, 1959
- OTIS GEORGE BAKER Administration (Secondary School)
B.S. in Education, Northeast Missouri State Teachers College, 1961
- JOHN EDGAR BALL Secondary Education (Physical Education)
B.S. in Education, Northeast Missouri State Teachers College, 1964
- ROBERT OREON BARKLAGE Secondary Education (Physical Education)
B.S. in Education, Northeast Missouri State Teachers College, 1963
- HOYT LEROY BARRICK Secondary Education (Industrial Education)
B.A., Iowa State Teachers College, 1958
- PATRICIA BETH BELT Guidance (Secondary School)
B.S. in Education, University of Missouri, 1959
- JACK DALE BENHAM Guidance (Secondary School)
B.S., Southern State Teachers College (South Dakota), 1961
- ELDON CASSEL BERGSTROM Guidance (Secondary School)
B.S., Iowa State University, 1946
- MARY WATKINS BOLLAR . Secondary Education (General Science Education)
B.S., Northeast Missouri State Teachers College, 1962
B.S. in Education, Northeast Missouri State Teachers College, 1962
- EARNEY LOYD BOWLIN Administration (Secondary School)
B.S. in Education, Northeast Missouri State Teachers College, 1963
- LARRY C. BRENIER Secondary Education (Industrial Education)
B.S. in Education, Northeast Missouri State Teachers College, 1963
THESIS: *Need for and Interest in an Area Vocational-Technical School for Five
Counties in Northeast Missouri (A Companion Study)*
- KERMIT BAYNE BROADFIELD Guidance (Secondary School)
B.S., Northeast Missouri State Teachers College, 1957
- MERLE DEAN BROWN Secondary Education (Industrial Education)
A.B. in Education, Municipal University of Wichita, 1955
THESIS: *An Analysis and Comparison of Selected Electronic Training Aids*
- ROGER EWING BRYAN Guidance (Secondary School)
B.S., Central College, 1957
- FREDA M. BUMGARNER Guidance (Secondary School)
B.S. in Education, Northeast Missouri State Teachers College, 1959
- HARRY LAVERN BUTLER Secondary Education (Industrial Education)
B.S. in Education, Northeast Missouri State Teachers College, 1963
THESIS: *Criteria Concerning Design and Function of Toolholders for General Metals
Hand Tools with Suggested Applications of the Findings.*

MASTER OF ARTS—Continued

- JIM FRANCIS CAREY Secondary Education (Physical Education)
B.S. in Education, Drake University, 1957
- GEORGE ALLEN CARTER . Secondary Education (General Science Education)
B.S. in Education, Northeast Missouri State Teachers College, 1962
- FRANK RUSSELL CARTHEY Guidance (Secondary School)
B.A., Iowa State Teachers College, 1955
- DENNIS ALLEN CHARLSON Secondary Education (English Education)
B.A., Luther College, 1962
- DORA BELLE CLARK Secondary Education (Business Education)
B.S. in Education, Northeast Missouri State Teachers College, 1956
- ALBERT CARL COCANNOUER Administration (Elementary School)
B.S. in Education, Northeast Missouri State Teachers College, 1964
- CLARENCE MILLARD CONOVER
Secondary Education (Mathematics Education)
B.S. in Education, Northeast Missouri State Teachers College, 1962
- JIMMIE LEE CORNELIUS Secondary Education (Physical Education)
B.S. in Education, Northeastern (Okla.) State College, 1958
- SYBIL CARMELITA COWELL Guidance (Secondary School)
B.S. in Education, Northeast Missouri State Teachers College, 1945
- HAZEL MARTIN CRAWFORD Secondary Education (Business Education)
B.S. in Education, Northeast Missouri State Teachers College, 1950
- HOLLIS DEAN CRAWFORD . Secondary Education (General Science Education)
B.S. in Education, Northeast Missouri State Teachers College, 1961
B.S., Northeast Missouri State Teachers College, 1961
THESIS: *A Survey of the Amphibia and Reptilia of Grundy County*
- RICHARD LEE CROOKS Guidance (Secondary School)
B.S. in Education, Northeast Missouri State Teachers College, 1961
- JOSEPH BLAINE CROUTERS Secondary Education (Physical Education)
A.B., William Jewell College, 1956
THESIS: *Survey of Physical Education Programs in Secondary Schools of Greater Kansas City, Missouri*
- BETTY JO CUNNINGHAM Elementary Education
B.S. in Education, Northeast Missouri State Teachers College, 1963
- GAYLON RICHARD DAHN Administration (City School)
B.A., Coe College, 1954
- BOBBY LEE DANIELS Administration (Secondary School)
B.S., Northeast Missouri State Teachers College, 1959
B.S. in Education, Northeast Missouri State Teachers College, 1961
- LUZONNE MARIE DARR Secondary Education (Physical Education)
B.S. in Education, Northeast Missouri State Teachers College, 1961
- CURTIS AMBROSE DAY Guidance (Secondary School)
B.S., Central College, 1958
- HELEN ROSALIE DEEDS Elementary Education
B.S. in Education, Northeast Missouri State Teachers College, 1958
- MARIAN J. DENNY Elementary Education (Teaching of Reading)
B.S. in Education, Drake University, 1960

MASTER OF ARTS—Continued

- HERBERT BENNIE DILLARD . . . Secondary Education (Physical Education)
A.B., William Jewell College, 1958
- LAURENCE JAMES DODD . . . Secondary Education (Physical Education)
B.A., Iowa State Teachers College, 1960
- CARL PHILIP DOOLEN . . . Guidance (Secondary School)
B.S. in Education, Northern Illinois State College, 1963
- TERRY WAYNE DOSS . . . Secondary Education (Social Science Education)
B.S. in Education, Northeast Missouri State Teachers College, 1962
- PATSY ANN DUFFEY . . . Secondary Education (Physical Education)
B.S. in Education, Northeast Missouri State Teachers College, 1962
- MARILYN HIGDON DUKE . . . Elementary Education (Teaching of Reading)
B.S. in Education, University of Missouri, 1958
- RAYMOND CLIFFORD EICKMEYER . . . Guidance (Secondary School)
B.S. in Education, Northeast Missouri State Teachers College, 1960
- JAMES HAYS EVANS . . . Secondary Education (General Science Education)
A.B., University of Missouri, 1959
- TELEA VEA FALEALII . . . Administration (Elementary School)
B.S. in Education, Northeast Missouri State Teachers College, 1963
- DENNIE EUGENE FOSTER . . . Secondary Education (Physical Education)
B.S. in Education, Northeast Missouri State Teachers College, 1960
- GLEN LELAND FOSTER . . . Guidance (Secondary School)
B.S., Iowa State College, 1942
- ERROL KENT GANN . . . Guidance (Secondary School)
B.A., Central College, 1961
- JUANITA J. GILPIN . . . Elementary Education
B.S. in Education, Northeast Missouri State Teachers College, 1960
- RICHARD EDWARD GASFORD
Special Education (Teaching Mentally Retarded Children)
B.S. in Education, Northeast Missouri State Teachers College, 1959
- THOMAS LEE GOTT . . . Administration (City School)
B.S. in Education, Southwest Missouri State College, 1957
- ROBERT EUGENE GRACE . . . Secondary Education (Physical Education)
B.S. in Education, Central Missouri State College, 1952
- BOBBY DEAN GRIMSHAW . . . Administration (Elementary School)
B.S. in Education, Northeast Missouri State Teachers College, 1960
- GARY AUSTIN GROHE . . . Secondary Education (Industrial Education)
B.S. in Education, Iowa State College, 1959
THESIS: *Effectiveness of Vocational-Industrial Training at Fort Madison High School
with Implications for Future Program Development*
- RAYMA LUCEILLE HACKNEY . . . Elementary Education
B.S. in Education, Northeast Missouri State Teachers College, 1953
- LINDA LOUISE HAMMONS . . . Secondary Education (Business Education)
B.S. in Education, Northeast Missouri State Teachers College, 1963
- JUDITH ANN HAMPTON . . . Elementary Education (Teaching of Reading)
B.S. in Education, Northeast Missouri State Teachers College, 1959

MASTER OF ARTS—Continued

- GERALD LLOYD HARPER . . . Secondary Education (Physical Education)
B.S., Culver-Stockton College, 1960
- JOHNNY REED HART . . . Secondary Education (Music Education)
B.S. in Education, Northeast Missouri State Teachers College, 1958
Piano Recital
- BRUCE EDWARD HARTMEN . . . Secondary Education (Physical Education)
B.A., Luther College, 1958
- CLAUDE DUANE HENSLEY . . . Guidance (Secondary School)
B.S. in Education, Southeast Missouri State College, 1961
- LORRAINE ISABELL HILGEDICK . Secondary Education (Business Education)
B.S. in Education, Northeast Missouri State Teachers College, 1961
- BRUCE DEAN HILL . . . Secondary Education (Social Science Education)
B.A., Luther College, 1959
- JAMES RICHARD HINDLEY Secondary Education (General Science Education)
B.S. in Education, Northeast Missouri State Teachers College, 1959
- LARRY PARKER HOMES . . . Secondary Education (Business Education)
B.S. in Education, Northeast Missouri State Teachers College, 1961
- DONALD ADOLPH HOPPEL . . . Secondary Education (Physical Education)
B.A., Iowa State Teachers College, 1958
- DONALD MAX HOSKIN . . . Secondary Education (Mathematics Education)
B.S. in Education, Northeast Missouri State Teachers College, 1961
- WILLARD JOHN HOWELL . . . Secondary Education (Physical Education)
B.A., Iowa State Teachers College, 1959
- HELEN WALKER HUNT . . . Secondary Education (English Education)
B.S. in Education, Northeast Missouri State Teachers College, 1960
- LEONA MAE HUTTON . . . Secondary Education (English Education)
B.A., William Penn College, 1962
- RICHARD LEE JENKINS . . . Guidance (Secondary School)
A.B., Peru State Teachers College, 1949
- ROBERT M. JEWETT . . . Guidance (Secondary School)
B.S. in Education, Northeast Missouri State Teachers College, 1959
- LARRY DEAN JOHNSON . . . Guidance (Secondary School)
B.S., Morningside College, 1958
- KENNETH WAYNE KELLER Secondary Education (Mathematics Education)
B.S. in Education, Northeast Missouri State Teachers College, 1961
- JACK PAYTON KENSLER . . . Administration (Secondary School)
B.A., William Penn College, 1961
- TOMMY RAY KENT . . . Guidance (Secondary School)
B.S. in Education, Northeast Missouri State Teachers College, 1958
- ROGER LEE KLINGMAN . . . Secondary Education (Physical Education)
B.A., Wertberg College, 1958
- DOUGLAS NEIL KNIGHT . . . Secondary Education (Physical Education)
B.S. in Education, Northeast Missouri State Teachers College, 1959
- DORIS DASCH KOHL . . . Elementary Education
B.S. in Education, Northeast Missouri State Teachers College, 1943

MASTER OF ARTS—Continued

- BEVERLY BLANCHE LEE . . . Secondary Education (Physical Education)
B.S. in Education, Central Missouri State College, 1959
THESIS: *Gymnastics for Girls*
- FELIX ANTHONY LEMAN . Secondary Education (General Science Education)
B.S., Northeast Missouri State Teachers College, 1961
B.S. in Education, Northeast Missouri State Teachers College, 1963
- MARY PARTON LEVINE . Secondary Education (Social Science Education)
B.S. in Education, Northeast Missouri State Teachers College, 1959
- BEVERLY LOU LOSSING Administration (Elementary School)
B.S. in Education, Northeast Missouri State Teachers College, 1961
- HARRY DUVAL LOSSING Administration (Elementary School)
B.S. in Education, Northeast Missouri State Teachers College, 1961
- IRL MARTIN LUTZ Secondary Education (Mathematics Education)
B.S. in Education, Northeast Missouri State Teachers College, 1961
- JOHN MICHAEL MARCH Secondary Education (Business Education)
B.S. in Education, Northeast Missouri State Teachers College, 1958
- DEAN LAVERNE MAY . Secondary Education (General Science Education)
B.S. in Education, Northeast Missouri State Teachers College, 1961
- ROLAND LOUIS MCCOMBS .Secondary Education (Mathematics Education)
B.A., Central College (Iowa), 1958
- VIRGINIA RAE KEETHLER McNABB
Secondary Education (General Science Education)
B.S. in Education, Northeast Missouri State Teachers College, 1957
THESIS: *Biological Succession of Net Plankton in the McNabb Pond in Schuyler
County, Missouri*
- CONRAD McNAY Administration (Secondary School)
B.A., State University of Iowa, 1961
- CHARLES LAVERYNE MEEK Administration (Secondary School)
B.S. in Education, Northwest Missouri State College, 1959
- JERRY LEE MERRELL Secondary Education (Industrial Education)
B.S. in Education, Northeast Missouri State Teachers College, 1962
THESIS: *Some Issues of Industrial Education in the United States: 1917 to 1935*
- ARDEN L. MESSER . . . Secondary Education (General Science Education)
B.S. in Education, Northeast Missouri State Teachers College, 1959
- EVAN MERYLE MIKEL . . . Secondary Education (Mathematics Education)
B.S. in Education, Northeast Missouri State Teachers College, 1962
- MARVIN JAMES MIKESH Guidance (Secondary School)
B.A., Iowa State Teachers College, 1958
- IRENE MAVIS MILDER Administration (Elementary School)
B.A., State University of Iowa, 1959
- RONALD PAUL MILLER Administration (Secondary School)
B.S. in Education, Northeast Missouri State Teachers College, 1960
- SHARON LYNNE MILLER Elementary Education
B.S. in Education, Northeast Missouri State Teachers College, 1961
- ONOFRIO FRANCIS MONACHINO Administration (Secondary School)
B.S. in Education, Northwest Missouri State College, 1955

MASTER OF ARTS—Continued

- ROBERT DEAN MOORE Secondary Education (Physical Education)
B.A., Simpson College, 1953
- JOSEPH NATHANIEL MORGAN Guidance (Secondary School)
B.S. in Education, Northeast Missouri State Teachers College, 1960
- MARGARET IRENE TORREY NELSON Elementary Education
B.S. in Education, Northeast Missouri State Teachers College, 1958
- ROGER HENRY NELSON Administration (Secondary School)
B.S. in Education, Northeast Missouri State Teachers College, 1962
- AUBREY JARRELL NUGENT Secondary Education (Physical Education)
B.S. in Education, Arkansas State College, 1960
- CHARLES WAYNE O'NEAL Secondary Education (Physical Education)
B.S. in Education, Northeast Missouri State Teachers College, 1961
- MONA MARGARET OVERTON Elementary Education
B.S. in Education, Northeast Missouri State Teachers College, 1955
- HELEN LEE PECORARO Elementary Education
B.S. in Education, Southwest Missouri State College, 1957
- HOWARD DUDLEY PLATZ Secondary Education (General Science Education)
B.S. in Education, Northeast Missouri State Teachers College, 1955
B.S., Northeast Missouri State Teachers College, 1956
- ROGER L. PRESCOTT Secondary Education (Physical Education)
B.S. in Education, Drake University, 1961
THESIS: *The Evolution of Basketball from 1891 to 1964*
- LAWRENCE JOSEPH PUTZ Guidance (Secondary School)
B.S. in Education, Northeast Missouri State Teachers College, 1962
- MARY ELIZABETH QUIGLEY Guidance (Secondary School)
B.S. in Education, Northeast Missouri State Teachers College, 1958
- JIMMY DELL RASH Secondary Education (Physical Education)
B.S. in Education, Northeast Missouri State Teachers College, 1957
- MICHELE SHORE RECH Elementary Education
B.S. in Education, Temple University, 1962
- GEORGE ALBERT RHOADS Administration (Secondary School)
B.A., William Penn College, 1960
- ROSS CLAUDE RICHARDSON Secondary Education (Industrial Education)
B.S. in Education, Northeast Missouri State Teachers College, 1958
THESIS: *Occupational Hazards of Industrial Welding and Their Implications to School Shop Welding Facilities and Practices*
- FREDERICK EARL RIPPEL Secondary Education (Physical Education)
B.S., Iowa State College, 1958
- DON ELLSWORTH ROBINSON Administration (Elementary School)
B.S. in Education, Northeast Missouri State Teachers College, 1958
- NADINE RITA ROBINSON Secondary Education (Business Education)
B.S. in Education, Northeast Missouri State Teachers College, 1963
- CHESTER DOUGLAS ROBISON Secondary Education (General Science Education)
B.S., Northwest Missouri State College, 1958
- BOBBY D. RODGERS Administration (Secondary School)
B.S., Parsons College, 1950

MASTER OF ARTS—Continued

- ROBERT T. RUDKIN . . . Secondary Education (General Science Education)
B.S. in Education, Northeast Missouri State Teachers College, 1962
- KENNETH EUGENE RUSSELL . . . Administration (Secondary School)
B.S. in Education, Iowa State College, 1947
- ALBERT NATHAN SANDLER . . . Secondary Education (Physical Education)
B.S. in Education, Northeast Missouri State Teachers College, 1959
- RUSSELL EUGENE SAUNDERS . . . Guidance (Secondary School)
B.S., Tarkio College, 1959
- EDWARD JAMES SCHOLTENS . . . Administration (Secondary School)
B.S., Central College (Iowa), 1957
- LOUIS L. SCHRADER . . . Administration (Secondary School)
B.S., Upper Iowa University, 1949
- LAWRENCE G. SCHROEDER . . . Secondary Education (Industrial Education)
B.S. in Education, Northeast Missouri State Teachers College, 1959
- LILLIE CAROLINE SCHROER . . . Elementary Education
B.S. in Education, Northeast Missouri State Teachers College, 1954
- VERNIE EMIL SCHULTZ . . . Administration (City School)
B.S. in Education, Iowa State College, 1952
- RICHARD LEE SEAMAN . . . Secondary Education (English Education)
B.S. in Education, Northeast Missouri State Teachers College, 1960
THESIS: *Bloody Imagery in Shakespearean Tragedy*
- HURCHEL LEON SEARS . . . Secondary Education (Physical Education)
B.S. in Education, Northeast Missouri State Teachers College, 1959
- JAMES WILLIS SHADE . . . Administration (Elementary School)
B.S. in Education, Northeast Missouri State Teachers College, 1962
- RAYMOND LEON SHORES . . . Administration (Secondary School)
B.S. in Education, Northeast Missouri State Teachers College, 1963
- JACKIE LEE SIMPSON . . . Secondary Education (Physical Education)
B.S. in Education, Northeast Missouri State Teachers College, 1961
- RONALD E. SIMPSON . . . Administration (Secondary School)
B.S., Northeast Missouri State Teachers College, 1960
- ROBERT LOUIS SINCLAIR . . . Administration (Secondary School)
B.S., Tarkio College, 1959
- VIDA MARIE BERNAU SISCO . . . Guidance (Secondary School)
B.S. in Education, Northwest Missouri State College, 1942
- LUCILE CLARK SMITH . . . Secondary Education (Business Education)
B.S. in Education, Northeast Missouri State Teachers College, 1941
- ROBERT FRANKLIN SNELL . . . Administration (Elementary School)
B.S. in Education, Northwest Missouri State College, 1961
- MAXINE SNIDER . . . Elementary Education
B.S. in Education, Drake University, 1956
- MELVIN LEE SNIDER . . . Administration (Elementary School)
B.S. in Education, Drake University, 1956
- ROBERT OWEN SNYDER . . . Administration (Elementary School)
B.S. in Education, Northeast Missouri State Teachers College, 1961

MASTER OF ARTS—Continued

- TILLMAN WHITE SORRELL, JR. Secondary Education (Industrial Education)
B.S. in Education, Northeast Missouri State Teachers College, 1960
- DONALD FRANCIS SPAIN . Secondary Education (General Science Education)
B.S. in Education, Parsons College, 1957
- JAMES ROBBINS STEELE
Elementary Education (Teaching Mentally Retarded Children)
B.S. in Education, Black Hills Teachers College, 1960
- LEWIS WALTER STOLTE . Secondary Education (General Science Education)
B.S. in Education, Northeast Missouri State Teachers College, 1960
- HERBERT LYNN STUHLMAN . . . Secondary Education (Physical Education)
B.S. in Education, Northeast Missouri State Teachers College, 1959
THESIS: *An Investigation into the Background and Possible Causes of Knee Injuries in Athletics*
- JUDITH ELAINE TADE Guidance (Secondary School)
B.S. in Education, Northeast Missouri State Teachers College, 1961
B.A., Northeast Missouri State Teachers College, 1961
- IVAN LEE TAYLOR Administration (Elementary School)
B.A., Culver-Stockton College, 1960
- MARTIN EUGENE TAYLOR Secondary Education (General Science Education)
B.S. in Education, Northwest Missouri State College, 1960
- DAVID FRANKLIN THOMAS Secondary Education (General Science Education)
B.S. in Education, Northeast Missouri State Teachers College, 1963
- FREDERICK HOMER THORNHILL Guidance (Secondary School)
B.S. in Education, Southwest Missouri State Teachers College, 1936
- MARJORIE NICHOLS THORNHILL Elementary Education
A.B., University of Kansas City, 1936
- ARDIS LENORE TREDENNICK Elementary Education
B.S., Culver-Stockton College, 1954
- HOWARD LLOYD ULIN Secondary Education (English Education)
A.B. in Education, Peru State Teachers College, 1954
THESIS: *A Great Book Seminar; A Proposal for the Gifted Student*
- DALE RICHARD UNKRICH Secondary Education (Industrial Education)
B.S. in Education, Northeast Missouri State Teachers College, 1963
THESIS: *Need for and Interest in an Area Vocational-Technical School for the Adair and Macon Counties in Northeast Missouri (A Companion Study)*
- DONALD BRUCE VAN DEVER. Secondary Education (Industrial Education)
B.A., Parsons College, 1959
- JERRY ED VITTETOE Secondary Education (Business Education)
B.S. in Education, Northeast Missouri State Teachers College, 1959
- ESTELLA OLIVE PHILLIPS WAPLES
Secondary Education (Business Education)
B.S. in Education, Northeast Missouri State Teachers College, 1932
- TYRONE JACK WARD Administration (Secondary School)
B.S. in Education, Northeast Missouri State Teachers College, 1963
- RICHARD LEE WARFORD Secondary Education (History)
B.S. in Education, Northeast Missouri State Teachers College, 1963

MASTER OF ARTS—Continued

- HILDA MARIAN SAWYER WEEDE Guidance (Elementary School)
B.S. in Education, Northeast Missouri State Teachers College, 1960
- JAMES PAUL WEIGAND Secondary Education (Physical Education)
B.S. in Education, Northeast Missouri State Teachers College, 1964
- RICHARD D. WESSEL Administration (Secondary School)
B.S. in Education, Northeast Missouri State Teachers College, 1962
- WALDO M. WEST Administration (Secondary School)
B.S. in Education, Northeast Missouri State Teachers College, 1958
- RALSTON LEE WESTLAKE Administration (City School)
B.A., Parsons College, 1961
- BEVERLY ANNE WHEELER Secondary Education (Business Education)
B.S. in Education, Northeast Missouri State Teachers College, 1962
- WILLIAM KENNETH WHITACRE Secondary Education (Physical Education)
B.S. in Education, Culver-Stockton College, 1960
THESIS: *Effects of Mental Practice on the Acquisition of a Certain Motor Skill*
- HENRY RICHARD WHITE, JR. Secondary Education (Physical Education)
B.S. in Education, Southern Illinois University, 1959
- DONALD JOHN WIEGMANN Administration (Elementary School)
B.S., Quincy College, 1958
- CAROLYN PITTMAN WILLIAMS Secondary Education (English Education)
B.S. in Education, Northeast Missouri State Teachers College, 1958
- MARGARET LOUISE LILE WILLIAMS Elementary Education
B.S. in Education, Northeast Missouri State Teachers College, 1961
- IDA MAY WOMBWELL Secondary Education (Music Education)
B.S. in Education, Northeast Missouri State Teachers College, 1942
Instrumental Recital
- RICHARD EMERY WUEST Secondary Education (Physical Education)
B.A., Luther College, 1956
- ROBERT ALLEN WYATT Administration (Secondary School)
B.S. in Education, Northeast Missouri State Teachers College, 1961
- ARTHUR LYNN YOCUM Administration (Secondary School)
B.S. in Education, Northeast Missouri State Teachers College, 1961
- ROGER DAY YOUNKIN Administration (Secondary School)
B.S., Parsons College, 1961
- SANDRA KAY ZACHARIAS Elementary Education (Teaching of Reading)
B.S. in Education, Northeast Missouri State Teachers College, 1962

AUGUST DIVISION OF THE CLASS OF 1964

SENIOR CLASS OFFICERS

WILLIAM HENRY PURDY, *President*
THOMAS WOLF, *Vice President*
BARBARA LYDDON, *Secretary*
MARILYN JEANNE SCHWEITZER, *Treasurer*
KENT BENNETT, *Councilman*
DONNA JULIA BUTTZ, *Councilwoman*

SENIOR CLASS COMMITTEES

DECORATIONS

MARIANNA GIOVANNINI, *Chm.*
JOAN SUE GALBRAITH
PATRICIA ANN HEDIGER
CONSTANCE ANNE TERRY
JANICE OLSON HUNT
ALICE MARIE SLAVIN

BANQUET

OLIVIA KAY ROSE BURNS, *Chm.*
DONNA JULIA BUTTZ
CHERYL JEAN MOSSBARGER
WILLIAM FRANKLIN BERRY
JAMES LANIER PERINE
RUSSELL P. MOORE, JR.
DIXIE GAY WEIDNER

CAP AND GOWN

RICHARD R. BEELENDORF, *Chm.*
CAROLYN ANN BOHON
GAIL BRUCE CRUMP
HARVEY CARL MUELLER
FRANCIS HOOD CORSON
SHARON LOUISE BRINEGAR
MARGARET ELLEN CLARKE
SUSANNE KATHRYNN CHAMBERLIN
MARY JANE MARX

AUGUST DIVISION OF THE CLASS OF 1964

GRADUATE CLASS OFFICERS

JAMES ROSS FARR, *President*
GARY G. HENDREN, *Vice President*
LINDA JANE LANTZ, *Secretary*
KAREN KAY PAWLOWICZ, *Treasurer*
DON RICHARD MOXLEY, *Councilman*
CAROL BRISCOE HARRIS, *Councilwoman*

GRADUATE CLASS COMMITTEES

CAP AND GOWN

GARY G. HENDREN, *Chm.*
ROBERT FRANKLIN SNELL
IRL MARTIN LUTZ
EVAN MERYLE MIKEL
BEVERLY ANNE WHEELER
ROBERT OREON BARKLAGE
KENNETH WAYNE KELLER
CLARENCE MILLARD CONOVER

PUBLICITY AND TICKETS

JOSEPH S. GLASER, *Chm.*
RONALD PAUL MILLER
JERRY RANDOLPH WILSON
DARRELL F. HARVEY
RICHARD ADOLPH DAVIS
LARRY RAY NULPH

BANQUET

FREDA M. BUMGARNER, *Chm.*
LINDA LOUISE HAMMONS
CAROLYN SUE WILSON
SYBIL CARMELITA COWELL
PATRICIA BETH BELT
JUDITH ELAINE TADE

DECORATIONS

CAROL ANN MYERS, *Chm.*
LUZONNE MARIE DARR
KAREN SUE WILSON
EDWARD CHRISTIAN MARTENS
DAL PATRICK JONES
THOMAS CHARLES HOYT

ENTERTAINMENT

JAMES MYRON SHAW, *Chm.*
CARL FREDRICK CRAMER
ROBERT ALBERT VOELKEL
ROBERT LOUIS SINCLAIR
MARTIN EUGENE TAYLOR
CAROL LYNN HARTMAN



"OLD MISSOU"

"Old Missou" and "Old Missouri"

And thou our love hath won,

Fondly cling thee to the mem'ry

Of old "Missouri's Son."

Gladly thee our hearts we tender

By the dim and flick'ring light,

Every lad a proud defender

Of the Purple and the White.

—BASIL BREWER, '01.