

NEBROSCOPE

SPECIAL
EDITION





We'd Send YOU
an ENGRAVED INVITATION

. . . to attend the Northeast Missouri State Teachers College this fall. . . .

BUT

the cost for several thousand would be prohibitive and besides we think you'd be more interested in seeing a pictorial booklet about the school.

SO

we have assembled pictures of representative activities of the College, to give you an idea of the sort of life you may expect to lead for the next four years if you enroll this fall.

HOWEVER

you may want more detailed information. If so, write Walter H. Ryle, President, Northeast Missouri State Teachers College, Kirksville, Missouri.





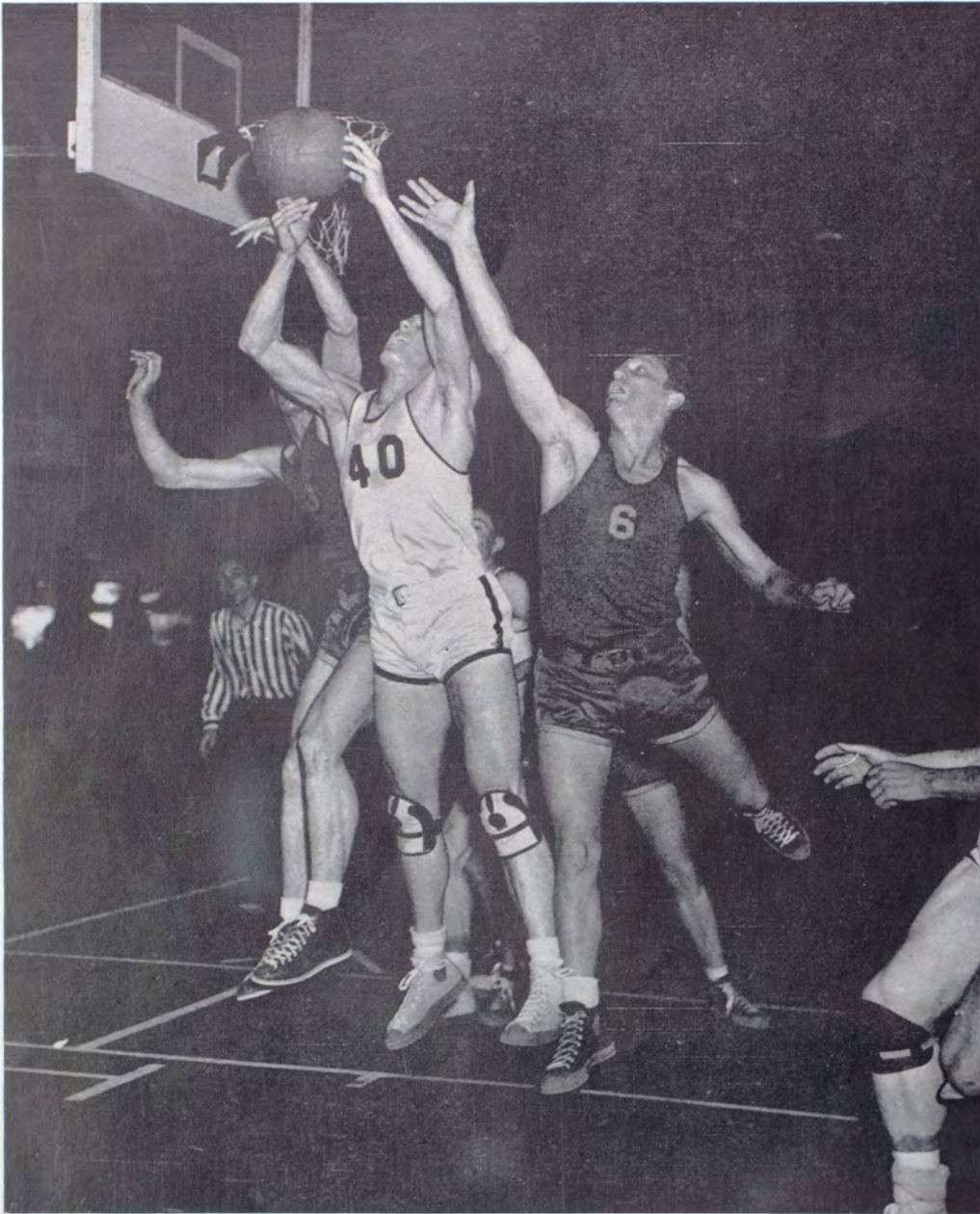
A group of students enjoy a bit of informal chopsticks in a corner of the College parlor. The fellow with the big smile in front of the door is Mr. Maddox, Assistant Professor of Physical Education. This College is renowned for the friendliness of its faculty and the personal interest taken in each student.



This beautiful building was erected to the memory of John R. Kirk, one of the nation's outstanding educators. Dr. Kirk was president of the College for 26 years. Directly behind this building is the Sunken Garden—a spot of perpetual loveliness.



N. A. I. B. TOURNAMENT
Whittier-Kirksville Game—March 12, Kansas City
Score: Kirksville 51, Whittier 49



REBOUND! Pink (40) out-reaches his opponents in taking a rebound off the bank-board in the Kirksville-Whittier game at the N.A.I.B. Tournament in Kansas City.

Basketball at the Teachers College has taken the lime light in the field of sports this year. The Bulldogs, thanks to Illinois, are the strongest team that the College has ever had. The M.I.A.A. Championship was, for the last several years, thought of but never taken. This year the Bulldogs ripped and tore their way through to the Championship with only one defeat, by Springfield.

Dodd, an expert ball handler and shot, and Gallatin, center and tipster artist, were chosen All-Conference. Lewis was picked for the second team, and Semanek and Pink were given honorable mention in the All-Conference election. These were the most players ever picked and mentioned for Kirksville in the M.I.A.A. election.

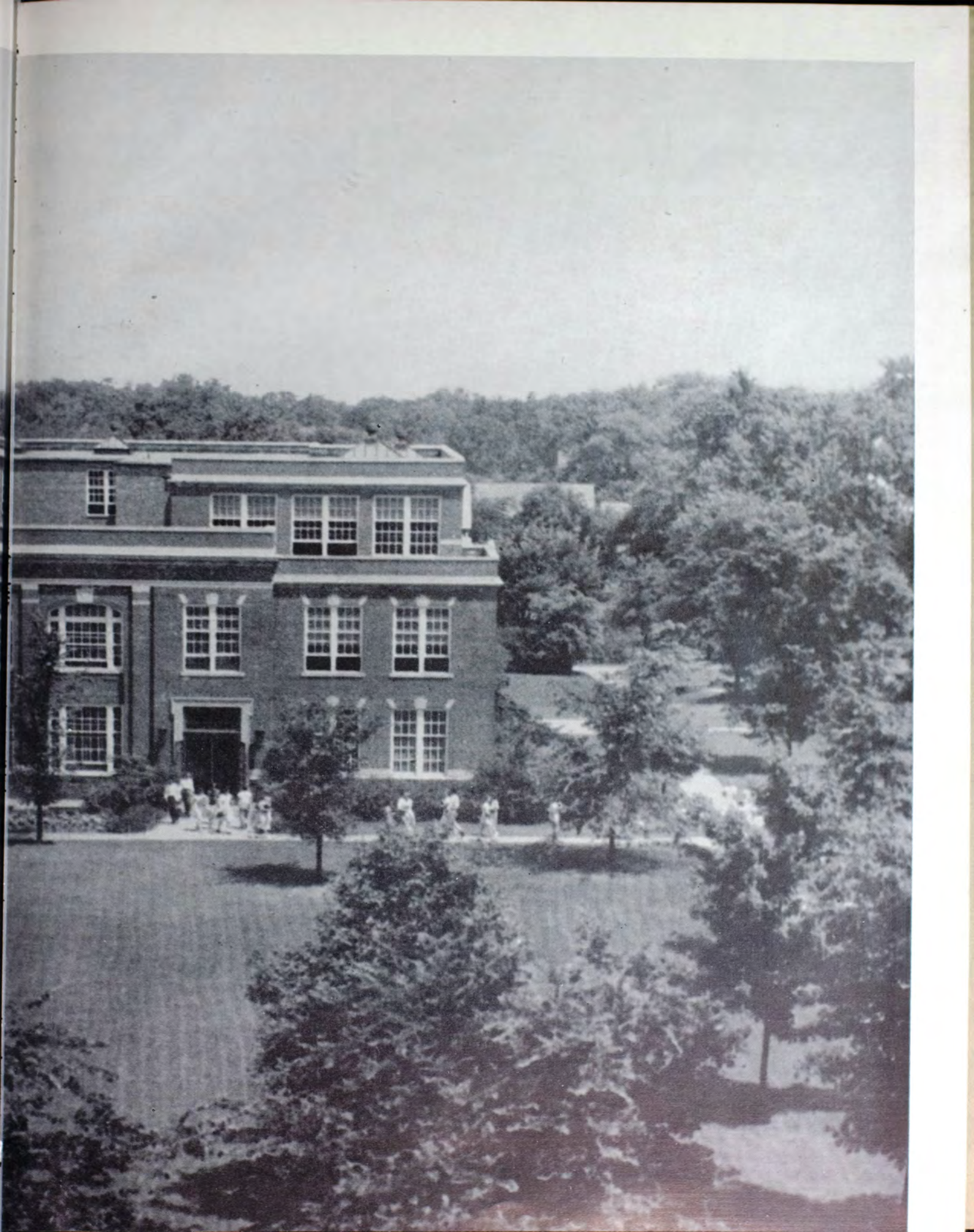
The coaches, Boyd King and Jimmy Dougherty, deserve a tremendous amount of credit for coaching and controlling such an expert group of ball players as these.

The Bulldogs, through their great ability as a team, received the coveted honor of playing in the N.I.A.B. in Kansas City, an honor which has never before been bestowed on the Kirksville Cagers. They won their first two games, defeating Cleveland, Mississippi, 76-58, and their second game, Whittier, California, 51-49, and lost their third game to Flagstaff, Arizona, 59-55, which eliminated them from the N.I.A.B., but not without a gallant struggle from the Bulldogs.



THE ECHO QUEEN
DONNA JEAN TRUITT





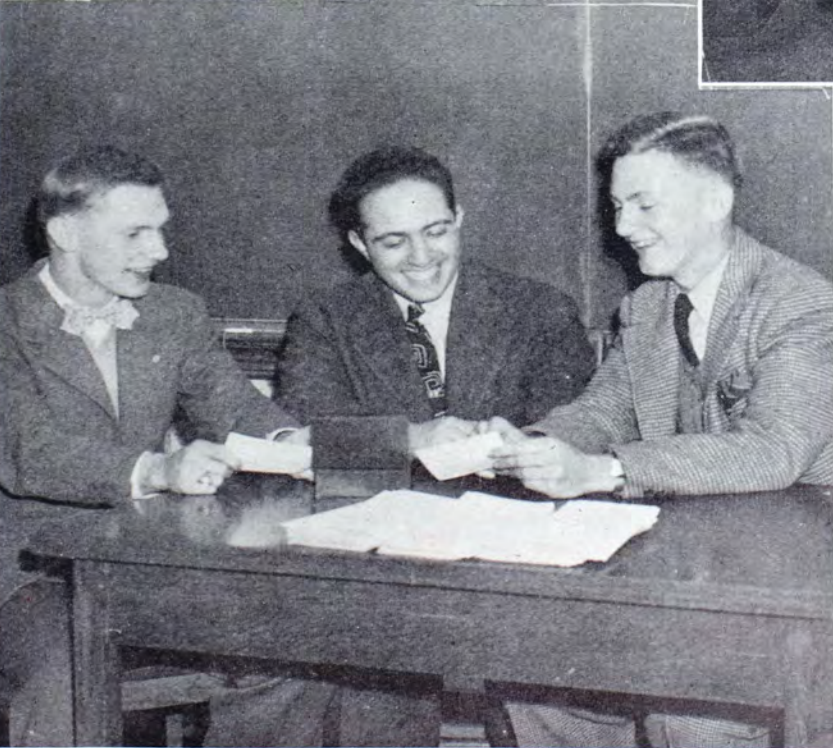
HOMECOMING QUEEN

ELAINE CARROLL RASH



THE QUEEN'S COURT: From left, Marian Mouse, Marjorie Murfin, Ferne Woods, Elaine Rash, the queen, Margaret Quinn, Jean Freeman, Jean Pevehouse, and Edith Rae Ford.

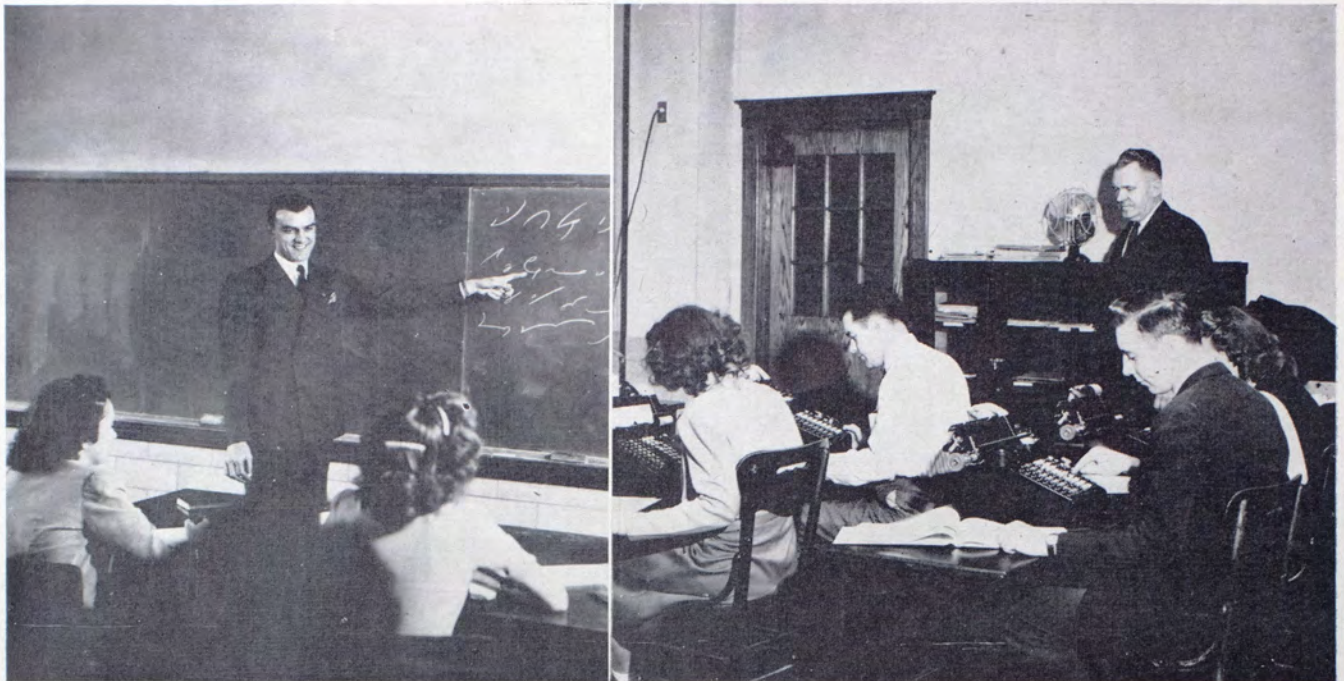








Students hurrying to and from classes on a brisk wintry morning. Courses are scheduled with a ten-minute break between classes to enable students to get from one building to the other. This scene was once the site of a lake.



One of the most popular subjects of students today are the commercial courses. This College has an enviable record in the preparing of successful commercial graduates. It is one of the oldest of teacher training schools in the work of preparing business teachers, and the instructors are recognized leaders in their field.

Graduates of this department have the double advantage of being equipped to teach the subject, or enter the business field and apply their knowledge of bookkeeping, typing, shorthand, business law, and allied subjects to some particular position.

In the fall of 1947 more students will be enrolled in institutions of higher learning than ever before. You should make every possible effort to be part of that great student body.

PRESIDENT WALTER H. RYLE

Never before in the history of mankind has there been such a demand for educated citizens as exists today. Farsighted leaders in every field of human endeavor are desperately needed to sustain our democratic way of life.

This is especially true in the field of teaching. The public is becoming aroused to the need for better prepared teachers. And the demand for better teachers is producing wonderful opportunities in this field. —W. H. R.



L. A. EUBANK
Dean of The Faculty



MRS. H. L. KNIGHT
Acting Dean of Women and Director of
Social Activities

ADMISSION TO THE COLLEGE

Graduates of first-class high schools in Missouri are admitted to the College of General Education. Those who wish to attend the College should write the Dean of the Northeast Missouri State Teachers College, Kirksville, Missouri.

CURRICULUMS

Students entering the College as freshmen have an opportunity to choose the type of curricula they wish from the following:

The Two-Year Certificate is based upon fifteen units of approved high school work and two years of prescribed college work. The residence requirement is three years and the certificate is valid for a period of two years. It may be renewed three times on the completion of ten hours additional college work for each renewal.

The Three-Year Rural Certificate is based upon fifteen units of approved high school work and three years of prescribed college work. This certificate is valid for a period of two years and is renewable.

The Bachelor of Science Degree in Education is based upon fifteen units of approved high school and four years of college work. The degree carries with it a certificate which is valid to teach in the schools of Missouri for life.

The Bachelor of Arts Degree is based upon fifteen units of approved high school work and four years of college work.

Pre-professional students are entering the College in an ever increasing number to receive specific academic courses which will prepare them to enter professional schools of medicine, osteopathy, law, engineering, dentistry, and many others. Those who plan to enter the professional schools are given every possible assistance.

EXPENSES

The State of Missouri pays a large part of your educational bill when you attend the Northeast Missouri State Teachers College. For detailed information concerning expenses write for a catalog.



JOSEPH BALDWIN
PIONEER EDUCATOR

