

Northeast Today

The logo for Northern Missouri State University (NMSU) is located in the top right corner. It consists of the letters "NMSU" in a bold, sans-serif font, enclosed within a square border. The top right corner of the square is cut off by a diagonal line, creating a triangular shape.

MONDAY, June 13, 1983

HAPPENINGS

TUESDAY, June 14

2:30 p.m. Fall pre-enrollment for first-time freshmen in summer classes, SUB

WEDNESDAY, June 15

5 p.m. Graduation applications due for graduate students, A/H 903

7 p.m. "It Came From Outer Space," Aud., BH

THURSDAY, June 15

Last day to drop classes without a code
8 p.m. "Thieves," Little Theater, thru Saturday

SUMMER RECREATION begins this week. Schedules for softball and volleyball during the week are listed below. Volleyball teams play in the women's gym in Pershing Building, and softball games are played on the women's softball field behind Stokes Stadium. Other volleyball teams wishing to participate should report to the women's gym at 7:30 p.m., Monday.

VOLLEYBALL

Monday:

5:30 p.m. 5♀ Plus vs. Live Wires

6:30 p.m. 5♀ Plus vs. Netters

7:30 p.m. Teams arranged

8:30 p.m. Teams arranged

Wednesday:

5:30 p.m. Live Wires vs. Netters

6:30 p.m. Live Wires vs. 5♀ Plus

7:30 p.m. Teams arranged

8:30 p.m. Teams arranged

SOFTBALL

Tuesday:

5:30 p.m. US! vs. Too Tall Tears

6:30 p.m. US! vs. Thumpers

Thursday:

5:30 p.m. Too Tall Tears vs. Thumpers

6:30 p.m. Too Tall Tears vs. US!

CAPS AND GOWNS for August graduates should be ordered Monday through June 22. Order forms can be picked up in the Campus Bookstore office.

VOLUNTEERS for the Long-Term Care Ombudsman program sponsored by Wesley House are needed. Students interested in working toward making life in nursing homes as pleasant as possible by helping to solve the problems that occur should call Debra Branson at 665-4682 or Roger Jespersen at 665-9331.

STUDENTS HELPING STUDENTS LEADERS are still being sought for the New Student Summer Orientation program. Volunteers will assist for one day in orienting new students to NMSU. Applications are available in the Freshman Counseling Office, 102 Administration/Humanities Building. For more information about a leader's responsibilities contact the student coordinator of the Students Helping Students Program, at 785-4136.

THE SOCIETY FOR CREATIVE ANACHRONISMS is sponsoring a medieval tournament from 10 a.m. to 4 p.m. Saturday. The event is free and the public is invited to watch the battle in Red Barn Park.

"IT CAME FROM OUTER SPACE," is this week's Student Activities Board movie. The 3-D film will be shown at 7 p.m., Wednesday in Baldwin Hall Auditorium. Admission is \$1.

"THIEVES," a comedy by Herb Gardner, opens at 8 p.m., Thursday in the Little Theater. The first production of the summer theater program continues through Saturday and will be presented again June 23-25. Tickets are \$4 and \$3. Reservations can be made by calling the Box Office, Baldwin Hall at 785-4515 from 12:30-2:30 p.m. or from 6-8 p.m.

THE WRITING LAB, located in 303 Administration/Humanities Building will be open every day of the first summer session from noon to 4 p.m. One-to-one tutoring will be available for help with writing problems and improving writing skills.

WESLEY HOUSE is hosting a worship-learning experience each Tuesday and Koinonia Corps choir practice each Thursday of the summer sessions. Both events are at 8 p.m. every week. Wesley House is the campus ministry of the Presbyterian, Episcopal and United Methodist churches and is located at 903 S. Davis, one block east of Missouri Hall. Everyone is welcome.

SENIOR TESTS will be given June 21 and July 12 at 3 p.m. in 102 Administration/Humanities Building. Students who plan to graduate at the end of the summer session and who did not take the test during the fall or spring semesters should contact the Testing Office, A/H 103, at 785-4140 in order to have their names placed on the list to take the test on one of the two dates.

For Upward Bound counselors. . .

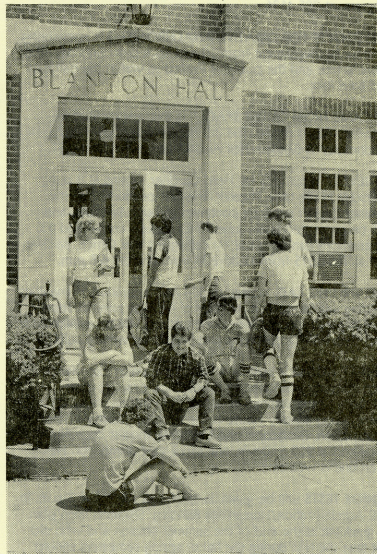
Fulltime means all the time

A full-time job usually means a 40-hour work week, but occasionally a job requires a little more time and effort. Rarely, however, is an employee expected to be on call 24 hours a day, seven days a week.

For six weeks each summer though, 11 University students and recent graduates are available every day, all day and night as counselors, tutors, friends, models and disciplinarians to the approximately 55 high school students involved in the Upward Bound program.

During the summer program the counselors spend almost all of their time with the students. They live in the residence halls. Some instruct classes in communication, reading, math, crafts or newspaper production. They plan sports and recreational activities and participate in all of the programs with their counselees.

The Upward Bound program has been on campus since 1966 and is funded annually by the United States Department of Education. "It's designed to help students gain the motivation and skills to go on to college," Lana Brown, Upward Bound administrative assistant, said.



Upward Bound students and counselors garner outside during a free period. Counselors and students are almost constant companions throughout the program.

The program accepts area students who have completed their sophomore or junior year in high school and tries to help them develop the skills and motivation necessary to succeed in college. There are also about 20 bridge students closely tied to the program. The bridge students have just graduated from high school and are taking their first classes for college credit during the summer.

For the counselors, a 24-hour-a-day job may have its drawbacks, but overall it's a rewarding experience.

Kelly Allen, senior, not only has been a counselor in the program for three years, but also went through it as a high school student. "I get a really good feeling from helping and being with the kids," she said.

Sometimes living in the residence hall and being around the noise all the time can be a little tiresome, she said, but overall it is not a lot noisier than living in the hall during the fall.

Brown said the program looks for a special type of individual when hiring counselors. "It takes a special kind of person with a lot of maturity." Applicants go through an extensive interview to help evaluate how they handle problems, their ability to supervise effectively and how they can fit in with other counselors. With the 24-hour live-in situation there is a lot of intensity. "They have to confront whatever happens; they can't let it slide," she said.

In addition, Brown said the program looks for high ability students who have been involved in a variety of organizations and experiences.

Most of the counselors are either majoring in or already working in an education field. The counselor is in a situation different from that of the average teacher. Luella Aubrey graduated from NMSU and now teaches high school during the year. She said being a counselor for Upward Bound helps her when she goes back to teaching in the fall. "At school I'm the teacher, but here I'm more."

Steve Wingert is the director of Missouri Hall, and for him the program is an opportunity to work with a different age group. "I found out how out of touch you can get with that age group (high school)," he said.

Both Aubrey and Wingert described the atmosphere of the program as positive. The program promotes cooperation and working together, Wingert said.

"Going through the program and working on the other end I think it's one of the best things for high school students," Allen said.

Brown and the counselors all agreed one of the best parts of the program is the close relationships which often develop between the counselors and the students. Often those relationships continue long after the program itself ends. The students and counselors many times correspond throughout the year, and students may contact the counselors when they need advice or want to discuss a problem, Brown said.

After the summer program ends students and counselors may correspond, but for six weeks in the summer counselors and students are constant companions for classes, recreation, social events, counseling and relaxation. "For six weeks you're in your own little world," Allen said.