

A New Semester, Another Chance

The beginning of a new semester is an easy time to get caught up in the whirl of activities which accompany the kick-off of a new year, and many of you will feel that there are far less than 24 hours in a day. But with a few pointers, you can budget your precious time.

Probably the most organized method of budgeting your time is by making a written schedule of your typical day. Make an hour-by-hour chart, writing in your activities for each hour block. You should first write down all class periods, laboratories, regular meetings and work

hours. Whatever time you have left can be divided between meals, sleep, study and homework, recreation and social activities.

Although you'll naturally deviate from this chart from time to time, you have made the effort to make time for not only those things which you have to do, but also those which you want to do. Try to stick to your plan as closely as possible. On those days that you have a class cancelled, for example, fill that space with another activity. You might decide to use that time to study.

This schedule will give you an overall plan for your day, but don't forget that it's important to budget your time during each specific activity. Allow yourself plenty of time for studying. Study in an appropriate place. Find a quiet, relaxing spot without many interruptions. If you go to the library, study in a carrel where you don't feel you have to look up every time somebody walks by.

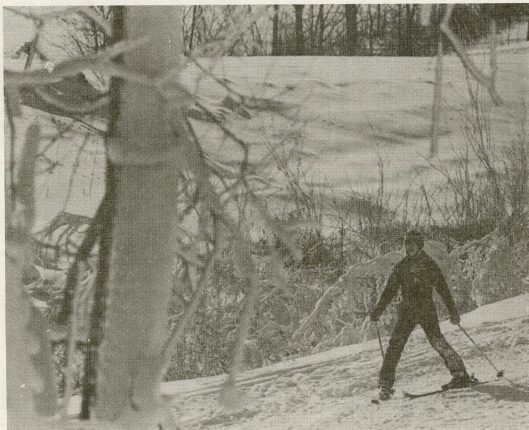
If a group effort is helpful, study with the right people. Studying with others is a good way to review what you have studied on your own, but try to choose study partners who want to study and not talk about last night's basketball game.

Come prepared to study. That way, you won't have an excuse to go back to your room or borrow something from a friend in the middle of your study session. You should take an occasional break during your study time. Clear your head for a few minutes; however, make sure your breaks don't last long. If you are having difficulty concentrating, figure out why. Perhaps you are being distracted by something or someone. Adjust to the situation.

If you are having trouble understanding something, ask a friend, classmate or your professor for help. They will be glad to help you if they can. Asking that "stupid question" is better than not learning at all.

Organizing your time and building good study habits may take a little time and effort, but the results will be worth it.

After unseasonably warm temperatures throughout December, New Year's Eve in Kirksville brought several inches of snow. Returning students and faculty began hitting the slopes at Rainbow Basin.



Today

calendar of events

JANUARY

7 MONDAY

Residence Halls Open, noon

8 TUESDAY

Registration, 9 a.m.
New Student Orientation,
3:30 p.m., Alumni Room, SUB

9 WEDNESDAY

Classes Begin, 7:30 a.m.
Free Add-Drop Begins, through
Jan. 15

Bulldog Basketball vs. University
of Mo.-St. Louis, 5:30 & 7:30 p.m.,
Pershing Arena

10 THURSDAY

Testing Services, General Edu-
cation Development Test (GED),
8 a.m., A/H 103

Welcome Back Dance, 8 p.m.-
midnight, Kirk Gym

Bulldog Wrestling vs. Drake Uni-
versity, 7 p.m., Pershing Arena

11 FRIDAY

Men's Basketball vs. Grinnell

German Language Table,
5:15 p.m., Ryle Hall private din-
ing room

Women's Basketball vs. St.
Ambrose College, 6:30 p.m.,
Pershing Arena

22 TUESDAY

Last Day to register and add
classes

Testing Services, ACT-COMP
(faculty only), 3 p.m., location to
be announced

Bulldog Wrestling vs. Northwest
Mo. State University, 7 p.m.,
Pershing Arena

SAB Spring Break Trip, Daytona
Beach meeting, 7 p.m., Violette
Hall

23 WEDNESDAY

University Players Film Club
showing, "Juliet of the Spirits,"
8 p.m., Aud., BH

24 THURSDAY

Bulldog Wrestling vs. Monmouth
and MacMurray colleges,
5:30 p.m., Pershing Arena

SAB Dinner Theatre, 6:30 p.m.,
Georgian Room, SUB, through
Saturday

SAB Movie, "Red Dawn," 7 &
9:15 p.m., Aud., BH

2 SATURDAY

Testing Services, Graduate Re-
cord Examination (GRE), 8 a.m.,
location to be announced

Chili Cooking Contest, 2nd an-
nual, 11 a.m.-3 p.m., Reiger
Armory

Men's Swimming vs. University
of Mo.-Rolla, 1 p.m., Natatorium

4 MONDAY

Testing Services, Sophomore
Test/ACT Assessment, 2:30 p.m.,
SUB

German Language Table,
5:15 p.m., Ryle Hall private din-
ing room

Women's Basketball vs. Quincy
College, 6:30 p.m., Pershing
Arena

6 WEDNESDAY

Testing Services, General Edu-
cation Development Test (GED),
8 a.m., A/H 103

Bulldog Basketball vs. Lincoln
University, 5:30 & 7:30 p.m.,
Pershing Arena

8 FRIDAY

Graduation Applications for un-
dergraduates (4-year and certi-
ficate programs) due

Testing Services, National
Teacher's Examination (NTE)

15 FRIDAY

SAB Movie, "Indiana Jones Tem-
ple of Doom," 7 & 9:15 p.m.,
Aud., BH

18 MONDAY

German Language Table,
5:15 p.m., Ryle Hall private din-
ing room

19 TUESDAY

Last Day to drop full semester
courses without code

20 WEDNESDAY

University Players Film Club
showing, "Pauline at the Beach,"
8 p.m., Aud., BH

21 THURSDAY

Testing Services, Miller Anal-
ogies Test (MAT), 3 p.m., A/H 103
University Symphony Orchestra
Concert, 8 p.m., Aud., BH

22 FRIDAY

SAB Movie, "Woman in Red,"
7, 9 & 11 p.m., Little Theater, BH

23 SATURDAY

Jazz Festival, Phi Mu Alpha 17th
annual, all day, guest artist,
Willie Thomas

College, 7:30 p.m., Pershing Arena

SAB Movie, "The Natural," 7 & 9:15 p.m., Aud., BH

15 TUESDAY

1985-86 Financial Aid Forms available in Financial Aids Office, A/H 100

Change of Schedule, \$5 fee
Testing Services, College Level Examination Program (CLEP), 8 a.m., A/H 103, also Wednesday
Delta Sigma Pi recruitment table, 9:30 a.m.-2:30 p.m., Violette Hall, through Jan. 21

16 WEDNESDAY

Trivial Pursuit Contest, 7:30 p.m., Activities Room. SUB

17 THURSDAY

Testing Services, Miller Analogous Test (MAT), 3 p.m., A/H 103

18 FRIDAY

SAB Movie, "Revenge of the Nerds," 7 & 9:15 p.m., Aud., BH

19 SATURDAY

NMSU V.I.P. Event, registration 10 a.m., SUB
Bulldog Basketball vs. University of Mo.-Rolla, 5:30 & 7:30 p.m., Pershing Arena

21 MONDAY

Cultural Awareness Week, through Friday
Spring 1985 Aid, last day to pick up aid for spring semester

26 SATURDAY

Forensics Tournament, A/H
Testing Services, Real Estate Licensing Exam (RELE), 8:30 a.m., location to be announced
Miss Kirksville Pageant, 7:30 p.m., Aud., BH

28 MONDAY

German Language Table, 5:15 p.m., Ryle Hall private dining room
Women's Basketball vs. Mo. Western State College, 6 p.m., Pershing Arena
Men's Basketball vs. Quincy College, 7:30 p.m., Pershing Arena

29 TUESDAY

Last Day to drop first-half block courses without pass/fail code
Lyceum Presents the Guthrie Theater in "Foxfire," 8 p.m., Aud., BH

30 WEDNESDAY

Bulldog Basketball vs. Central Mo. State University, 5:30 & 7:30 p.m., Pershing Arena

1 FRIDAY

Summer Japan Program application deadline, A/H 111E or BH 101
SAB Movie, "Bachelor Party," 7 & 9:15 p.m., Aud., BH

2:30 p.m., location to be announced

SAB Movie, "Purple Rain," 7 & 9:15 p.m., Aud., BH

Women's Swimming vs. Grinnell College, 7 p.m., Natatorium

11 MONDAY

German Language Table, 5:15 p.m., Ryle Hall private dining room
Women's Basketball vs. William Woods College, 6 p.m., Pershing Arena
Wind Symphony Concert, 8 p.m., Aud., BH

12 TUESDAY

Last Day to drop first-half block courses with code
Testing Services, ACT Assessment (residual), 2:30 p.m., location to be announced
NMSU Live Tryouts, 4:30-6:30 p.m., Activities Room, SUB
NMSU Theatre Department presents, "A Midsummer Night's Dream," 8 p.m., Little Theater, BH, through Saturday

13 WEDNESDAY

Last Day to receive refund for withdrawal from school
Testing Services, ACT-COMP (faculty only), 2:30 p.m., location to be announced
Bulldog Basketball vs. Northwest Mo. State University, 5:30 & 7:30 p.m., Pershing Arena
Concert Band Performance, 8 p.m., Aud., BH

Testing Services, Real Estate Licensing Exam (RELE), 8:30 a.m., location to be announced
Bulldog Basketball vs. Southeast Mo. State University, 5:30 & 7:30 p.m., Pershing Arena

24 SUNDAY

NMSU Live, 8 p.m., Georgian Room, SUB
Visiting Artist, Mark Puckett, piano recital, 3 p.m., Little Theater, BH

25 MONDAY

German Language Table, 5:15 p.m., Ryle Hall private dining room
Lyceum Presents the Kansas City Ballet, 8 p.m., Aud., BH

MARCH

1 FRIDAY

Midterm, last day of first-half block courses

4 MONDAY

Midterm Break Begins

11 MONDAY

Classes Resume, 7:30 a.m., first day of second-half block courses

THIS WEEK...

NEW STUDENT ORIENTATION for all new freshmen and transfer students will begin at 3:30 p.m. Tuesday in the Alumni Room of the Student Union Building. For more information, call Freshman Counseling at 785-4136.

BULLDOG BASKETBALL takes on the University of Mo.-St. Louis in MIAA action this week. The Lady Bulldogs play at 5:30 p.m., followed by the men's game at 7:30 p.m. Wednesday in Pershing Arena. The men also square off against Grinnell College of Iowa at 7:30 p.m. Friday in Pershing Arena.

A WELCOME BACK DANCE will be held from 8 p.m. to midnight Thursday in Kirk Gym. The dance, sponsored by the Residence Hall Association, will feature refreshments and door prizes. Admission is 50 cents.

BULLDOG WRESTLERS grapple Drake University at 7 p.m. Thursday in Pershing Arena.

"THE NATURAL," starring Robert Redford, is this week's Student Activities Board movie. Showings are at 7 and 9:15 p.m. Friday in Baldwin Hall Auditorium. Admission is free with an SAB sticker and \$1 without.

NEXT WEEK...

DELTA SIGMA PI professional business fraternity will be recruiting for new spring membership. They will have a recruitment table set up between 9:30 a.m. and 2:30 p.m., Jan. 15-21, outside 119 Violette Hall. To be member of Delta Sigma Pi, you must have a minimum cumulative grade point average of 2.5 and be a business administration, business education or accounting student. For more information, call Jeff Cassmeyer at 665-6475.

THE ACCOUNTING CLUB will hold an open meeting at 6 p.m., Jan. 16, in 119 Violette Hall. Prospective members must have completed or be enrolled in Intermediate Accounting I.

A TRIVIAL PURSUIT CONTEST will begin at 7:30 p.m., Jan. 16, in the Activities Room of the Student Union Building. Teams may consist of one to three members with a \$3 fee per team. Prizes will be awarded to top teams. For more information, call Bill Newbury at 785-5464. The contest is sponsored by the Pershing Society.

THE OUTREACH PROGRAM at the Baptist Student Union is sponsoring "Things are Heatin' Up at the BSU" at 7 p.m., Jan. 17, at the BSU. The event has a Hawaiian theme and everyone is welcome to wear Hawaiian clothing and participate.

"REVENGE OF THE NERDS" is the Student Activities Board featured movie at 7 and 9:15 p.m., Jan. 18, in Baldwin Hall Auditorium. Admission is free with an SAB sticker or \$1 without.

ALPHA PHI ALPHA Fraternity Inc. will hold its 11th annual Black and Gold Ball at 10 p.m., Jan. 19, at the Red Fox Inn on Highway 63 south. Tickets are \$2 in advance or \$2.50 at the door.

BULLDOG BASKETBALL takes on the University of Mo.-Rolla. The Lady Bulldogs play at 5:30 p.m., followed by the men's game at 7:30 p.m., Jan. 19, in Pershing Arena.

NMSU'S V.I.P. EVENT will begin at 10 a.m., Jan. 19, with registration in the Student Union Building. The event, sponsored by the Admissions Office, gives high school students a chance to view college life from the inside. For more information, call the Admissions Office at 785-4114.

ALL FACULTY AND STAFF are encouraged to stop by 114 Pickler Memorial Library and pick up a free paperback copy of "In Pursuit of Degrees With Integrity: A Value Added Approach to Undergraduate Assessment," published by the American Association of State Colleges and Universities. The publication describes NMSU's award-winning Value-Added Program.

APPLE COMPUTER INC. is offering exceptional prices on Apple IIc, Apple IIe and Macintosh computers to full-time instructional and administrative employees of accredited K-12 schools, colleges and universities. For more information, write: An Apple for the Teacher, c/o B&M Publications, P.O. Box 306, Half Moon Bay, CA 94019.

A CHINESE MASS MEDIA PROGRAM is being sponsored by the Journalism Department at the University of Wisconsin-River Falls from May 27-June 11. The 15-day cultural, historical and media tour is open to all students, faculty and communications professionals. Airfare from the west coast, all accommodations, food, transportation and tours in China cost \$2,900. Application deadline is April 15. For more information, call Debra Shrout, ECHO adviser, at 785-4490 or 785-4450.

THE ECHO YEARBOOK STAFF is accepting applications for the following positions for the spring semester: sports editor, index editor, photography positions and various assistant editor positions. Applications are available in the ECHO Office, 305 Laughlin Building, or in the Dean of Students Office, 204 Administration/Humanities Building. Application deadline is Jan. 14.

THE NORTHEAST TODAY is published weekly by the Public Relations Office. Deadline for entries is at 5 p.m. the Wednesday before publication the following Monday. This deadline is subject to change for issues before and/or after holidays and for calendar issues. Entries should be printed on forms available in the Public Relations Office, 202 Administration/Humanities.