



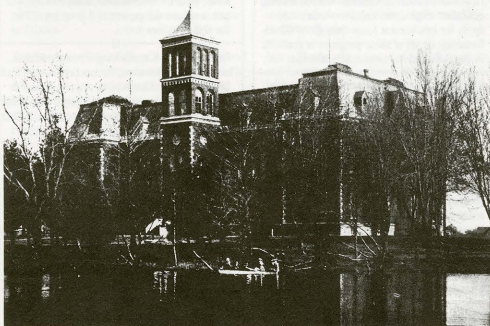
NORTHEAST TODAY

▶ VOL. 16 NO. 2 ◀

Northeast Missouri State University

January 20, 1992

Northeast's 125th Year: "Old Baldwin Hall"



Construction began on the first building on what was to become the Northeast Missouri State University campus in 1871 in what is now the sunken garden behind Kirk Memorial. The cornerstone was laid on Sept. 6, and construction began soon after. Due to complications, the building was not completed until January 1873. On Jan. 13, 1873, a "grand ball" was held to celebrate the completion and on Jan. 16, the students of the Normal School moved into the new building. It was the only building on campus from 1873-1901. The building was known as the "Normal Building" until 1905, when it was rededicated as "Baldwin Hall.

About 3:30 p.m., Jan. 28, 1924, President John R. Kirk discovered that Baldwin Hall was on fire. According to Kirk, the fire started on the east corner of the third floor. The building had been considered a fire hazard for several years and the fire spread rapidly. Soon Baldwin Hall was completely aflame. Kirk, John J. Jack, head janitor, and the janitorial force tried to keep the fire under control until the fire department could get there, but they were forced to give up by the extreme heat. The students and faculty carried much of the equipment out of Baldwin Hall to the new Kirk Building.

The fire engine pumped water from the College lake, but it was quickly evident that Baldwin Hall could not be saved, so efforts were concentrated on nearby Science Hall and Library

Hall. The fire door between Baldwin and Science Hall made it possible to save Science Hall, but Library Hall had no fire door and caught fire about 4:30 p.m.

The class of 1916 presented the University with a granite boulder to mark the location of the original Baldwin Hall. The boulder is located on the east side of Kirk Memorial where the east entrance of Baldwin Hall once was.

The current Baldwin Hall was constructed during the administration of Walter H. Ryle. The cornerstone ceremonies were held on May 19, 1938, immediately following the inauguration ceremonies for President Ryle. The building was complete and ready for use Jan. 2, 1939.

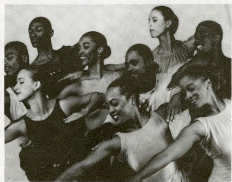
Lyceum Presents Black Dance Theatre

The Dallas Black Dance Theatre will perform at 8 p.m., Jan. 28 as part of the 1991-92 Lyceum Series. Free tickets for the performance, which will be held in Baldwin Auditorium, are available for students, faculty and staff in the Student Activities Board Office, SUB, and at the door.

Dallas Black Dance Theatre is a contemporary dance company with a mixed repertoire of modern, jazz, ethnic and spiritual works by nationally and internationally known choreographers. The company also performs full-length dance works such as "Porgy and Bess" and "Carmen Jones."

The company was founded in 1976 with the purpose of providing dance opportunities for minorities. Today, the company offers opportunities to the entire dance population. The Dallas Black Dance Theatre is the only predominately black professional dance company in a five-state region of Texas, Louisiana, Oklahoma, May New Mexico and Arkansas.

The 1991-92 season is Dallas Black Dance Theatre's first international season. This summer, they travelled to Peru and Italy for engagements. This year they are also celebrating their 16th season as the oldest continuously operating dance company in Dallas.



"Hear My Cry: An Anthology of King"

Martin Luther King Day
Celebration Banquet

January 20th, 1992 - 6 p.m.
The Georgian Room, SUB

featuring *The Unique Ensemble*
Dr. Carolyn Lamar Jordan, guest speaker

Banquet Tickets: \$2.50 for students, \$5 for non-students

For more information contact: Minority Services, 103 McClain Hall

Notes

The Sophomore Writing Experience will be offered on the following dates: Jan. 31; Feb. 2, 5, 7, 12, 14, 21, 23, 26, 28; March 2 and 8. All graduating seniors or students who wish to take Comp. II during the summer must take the SWE by Feb. 7. All students who wish to take Comp. II next fall must take the SWE by Feb. 28. For more information, contact the Writing Center in McClain Hall 303 at 785-4484.

Seniors: Careers '92, a national, selective, by-invitation job fair, will be held at the Chicago Hilton & Towers Feb. 27 and 28. To apply for an invitation, send resume and (optional) cover letter specifying career interests, special achievements, etc., to Dept. CHI, P.O. Box 1852, New Haven, CT 06508 by Feb. 1. No attendance fee is charged. Free transportation available through the CPC for those invited. See CPC Hoffice for additional information.

Journalism students may apply for the William B. Ruggles Scholarship sponsored by the National Right to Work Committee. Applicants must submit an essay demonstrating an interest in and a knowledge of the Right to Work principle. Applications are available in the Financial Aid Office, McClain Hall 100. Deadline is March 31, 1992.

Scholarship applications from the Society of Manufacturing Engineers are available in the Financial Aid Office, McClain Hall 100. Thirteen \$500 scholarships will be awarded to full-time undergraduate students in manufacturing engineering or manufacturing engineering technology. One \$1,000 scholarship will be awarded to a full-time undergraduate student seeking a career in robotics/automated systems. Application deadline is March 1, 1992.

Missouri Teacher Education Scholarship applications for the 1992-93 school year are now available in the Financial Aid Office, McClain Hall 100. Applicants must be Missouri residents in their freshman or sophomore year majoring in education. Information on additional requirements and conditions are available from the Financial Aid Office. The application deadline is February 15, 1992.

Scholarship applications for the 1991-92 Apple/ae/Jackson/Parks Future Scholarship are available in the Financial Aid Office, McClain Hall 100. This \$1,000 scholarship is sponsored by Concerned Educators Against Forced Unionism and is open to undergraduate education majors. Applications must be submitted by April 30, 1992.

Financial Aid applicants—NOW is the time to pick up your ACT Family Financial Statement packets for the 1992-93 school year in the Financial Aid Office, McClain Hall 100. You must complete this application if you wish to apply for the Pell Grant. Supplemental Educational

Stafford Student Loan (formerly Guaranteed Student Loan) or Missouri Grant. Apply early. Call the Financial Aid Office at 785-4130 or stop by if you have questions or would like to make an appointment.

Non-traditional women students (age 30 and above) are invited to apply for various scholarships administered by Business and Professional Women's Foundation. Scholarships are also available for women ages 25 and older studying in health care fields. In addition, women seeking education in graduate business studies may apply for low-interest loans through BPWF. Information on all of these programs is available in the Financial Aid Office, McClain Hall 100.

A one-hour course covering NMSU's electronic mail, conferences and campus-wide information system will be offered Jan. 22 and 29 at 7 p.m. A sign-up sheet for each class will be located at the lab desk in Violette Hall 248.

By dialing 627-HELP, students, faculty and staff can be put in touch with a female or male (your choice) sexual assault officer who is specially trained in the issues surrounding sexual assault. If you or someone you know has been assaulted, please call to obtain information about crisis support, right to anonymity, medical treatment, NMSU-supported counseling services, and options on police reporting and the University's procedure for disciplinary review/action. Anyone with an interest or need is encouraged to call for information about the above topics or other areas related to sexual assault.

Student Senate is accepting applications for the positions of one freshman representative, one sophomore representative and three representatives-at-large. Anyone may apply for the representative-at-large position. Applications are available at the Student Senate Information Desk and at hall desks and are due by 6 p.m. Jan. 27 at the Information Desk.

Recruitment tables for Delta Sigma Pi, a professional co-ed business fraternity, will be available from 8:30 a.m. to 2:30 p.m. on Jan. 29 - Feb. 4 in Violette Hall outside room 140.

The State Deferred Compensation representative from PEBSCO will be available Jan. 24. There will be a brief informational meeting at 9 a.m. in the SUB Room 4 followed by individual sessions. The representative will have access to account balances for current participants and will also have the ability to project future values. For more information, contact the Human Resources Office at 785-4051.

The library's Food For Fines campaign during the month of December brought in 1,835 cans of food. The food was given to the Salvation Army for distribution.

Beginning Tai Chi Chuan instruction in the Chungnam-ching short form will be offered from 8-9 p.m. on Sundays and Wednesdays in Pershing Building 220. The cost is \$10 per semester.

Kirksville has been chosen for a pilot project of the National Audubon Society's Community Solid Waste Program. The project is based on a grant from Fuji Photo Film and its goal is to gather information for assisting communities in developing comprehensive solid waste plans. Linda Jones, from the National Audubon Society, will give a talk on the project at 7 p.m. Jan. 27 in the SUB Activities Room.

Fantasy Club is sponsoring a science fiction and fantasy convention, Dream Con V, on March 28-29. Anyone interested in running games or merchant tables, etc., should contact Mary Miller through the Fantasy Club mailbox in the SUB or at 785-5779.

A travel/study abroad program sponsored by the Division of Business and Accountancy will be offered from May 10-28 for six credit hours. Visits will be made to the Netherlands, Luxembourg, Germany, France and Switzerland. The trip will combine study and field trips related to the dramatic economic changes evolving in Europe. An informational meeting will be held at 6 p.m. on Jan. 28 in Violette Hall 111. All majors are welcome. Contact Mary Giovannini, Violette Hall 107 at 785-4365 or the Division of Business and Accountancy Office, Violette Hall 182 at 785-4346 for more information.

The Habitat for Humanity each year issues a collegiate challenge for college students to participate in a work experience project, building homes for those in need. The projects are scheduled at various sites throughout the nation during spring break. There will be an informational meeting at 7 p.m. Jan. 22 in SUB Room 4. For more information call the Center for Service-Learning at 785-4265.

The Division of Education's Macintosh Lab is open to the public from 4-8 p.m. on Tuesday and Thursdays.

The Teacher Technology Center (TTC) is open for the semester. The schedule is Mondays 11:30-5 p.m., Tuesdays 11:30 a.m.-8 p.m., Wednesdays 8:30-5 p.m., Thursday 11:30 a.m.-8 p.m. and Friday 11:30-5 p.m. The TTC is located in Violette Hall 244 and is open to the public. For more information, call the TTC during the above hours at 785-7130.

The deadline for Dog Days chair/assistant chairperson applications has been extended to Jan. 22. Pick up application forms in the Campus Activities and Organization Center, SUB.

Notables

The Nu chapter of Lambda Pi Eta, national honorary speech communication society, was recognized in the spring issue of its national newsletter, *Simply Speaking*. The article was written by **Joe Dunne**, senior psychology major, and highlights the group's peer-tutoring program for COMM 170 students.

John Applegate, associate professor of communication disorders, chaired an instructional lab on "How to Survive the Paperwork: Appletworks as an Information Management Tool" during the annual convention of the American Speech-Language-Hearing Association in Atlanta.

Jim Barnes, editor of *The Chariton Review* and professor of comparative literature, has had *The Chariton Review* nominated for inclusion in *Writer's Digest Fiction-Fifty*, which features publications presenting the best combinations of opportunity, prestige and pay for fiction writers.

Shantaram Bhat, instructor of French, has had a paper in French titled "Teaching of French Language and Literature in India" accepted by the Midwest Romance Languages and Literatures Conference to be held May 1-2 at the Department of Romance Languages, University of Missouri-Columbia.

Marlow Ediger, professor of education, has had the following manuscripts published: "Creativity in Mathematics," in the *Bulletin AMQ*; "The Student, Motivation, and Mathematics," in

the *Indian Journal of Mathematics*; "The Psychology of Learning and the Mathematics Curriculum," in *Education*; and "Reading Skills vs. Ideas," in *Resources in Education*.

Lewis B. Hershey, assistant professor of business administration, has been retained by Prentice Hall publishers to develop a conceptually-based computerized test bank for Kotler & Armstrong's *Principles of Marketing* textbook. The test bank will feature mini-cases requiring students to apply course concepts to solve real world business problems and will be used to supplement existing, definitionally-based test banks.

Jerry Mayhew, professor of exercise science, and former faculty member Tom Ball recently had their article titled "Relationship of Structural Dimensions to Bench Press Strength in College Males" published in the *Journal of Sports Medicine and Physical Fitness*.

Sara Orel, assistant professor of art, has had an article published in the 1991 volume of the *Journal of the American Research Center in Egypt*. The article discusses the results of her excavations on Middle Kingdom levels at Karnak, near Luxou, Egypt.

Laura Zimmer-Tamakoshi, assistant professor of anthropology, has been elected Fellow of the American Anthropological Association for her significant scholarly contributions to anthropology.

Debate Team Places Second at Wisconsin and Wins St. Louis

The NMSU Debate Team was a finalist at the University of Wisconsin-Oshkosh debate tournament, held Nov. 23-24. Michael Blotvegel, sophomore political science major, and Erik Corley, sophomore history major, finished second in the junior varsity division.

"The tournament was a good opportunity to see how we stack up outside our region," Jack Hart, director of forensics, said.

Freshmen Craig Shallart and Adam Crawford, pre-law/English major, were quarterfinalists. Crawford was named fifth place speaker in the tournament. Erik Hansen, senior political science major, tied for third place speaker in the open division.

The team also won the Sweepstakes Award at the University of Missouri St. Louis "Study Break" debate tournament on Dec. 7. The Sweepstakes Award goes to the squad with the best overall record in the tournament.

"It's a fine way to finish up the semester," Hart said.

Heather Stanton, junior political science major, and Stephanie Bahleda, sophomore pre-

law/English major, went undefeated in the tournament. Shallart was named top speaker of the tournament. Kelley Rudd, freshman undeclared major, finished as third place speaker, while Holly Bawser, freshman, and Dave Wood, freshman computer science major, finished sixth and seventh speaker, respectively. Crawford tied for ninth place speaker.

The semester's debate topic was "Resolved: That U.S. colleges and universities have inappropriately altered educational practice to address issues of race or gender."

SAB Spring Movies

Jan. 24	Backdraft
Jan. 31	Robin Hood
Feb. 7	Boyz n the Hood
Feb. 8	Star Wars Trilogy
Feb. 14	Regarding Henry
Feb. 21	Terminator II
April 24	The Doctor
May 1	Barton Fink

Admission is \$2 or free with an SAB sticker.

New Faculty

This is the third in a series of profiles featuring new faculty.



Lee Orchard, associate professor of fine arts, comes to the University from Christ College, Irvine, Calif., where he was associate professor of theatre, chair of the Division of the Humanities and director of the theatre program.

He received his Bachelor of Arts and Bachelor of Science in Education from Concordia University in 1975. Orchard received his master's from Northwestern University in 1979 and his doctorate from the University of Oregon in 1988, both in theatre arts. He has given many presentations at conventions and has been published in *Issues in Christian Education*.



Laura Zimmer-Tamakoshi, assistant professor of anthropology, comes to Northeast from Bryn Mawr College and the University of Pennsylvania where she was a visiting assistant professor of anthropology. She received her Bachelor of Arts from the University of Pennsylvania

in 1977. She received her Master of Arts in 1979 and her doctorate in 1985, both from Bryn Mawr College. Zimmer-Tamakoshi has participated in summer seminars and presented a paper at the annual meetings of the American Anthropological Association.



Gregg Siewert, assistant professor of French, comes to Northeast from the University of Iowa, where he recently completed his doctoral thesis in 16th-century French literature. He received his master's in French in 1977 and his bachelor's in French and secondary education from

Doane College in 1974. He previously taught French at Grinnell College, and has taught English in French at universities in Poitiers and in secondary schools in Nantes.



Michael Adams, assistant professor of mathematics, comes to NMSU from Colorado State University where he was working on his dissertation. Prior to that, he spent three years at the National Security Agency in Washington, D.C., working as a cryptologist. Adams received

his bachelor's from the University of Nebraska-Lincoln in 1979 and his master's from Ohio State University in 1982. Adams is a member of the Mathematical Association of America and the American Mathematical Society and has been published in *IEEE Transactions on Information Theory*.

This Week

20 MONDAY

- ▶ **Martin Luther King, Jr. Day**
- ▶ 2:30-4:30 p.m.—**Symposium** on "I Have a Dream" in honor of Dr. Martin Luther King, Jr., sponsored by the Social Science Division, SUB Activities Room. Printed copies of the speech "I Have a Dream" will be available in the Social Science Division Office, McClain Hall 214.
- ▶ 5:30 p.m.—**Elementary Education Club** meeting, Violette Hall 119, featuring Charlene Cassidy, second-grade teacher at Benton School.
- ▶ 6 p.m.—**"Hear My Cry: An Anthology of King,"** ceremony and banquet in honor of Dr. Martin Luther King, Jr., sponsored by Minority Services and the Cultural Programming Coalition, SUB Georgian Room. Cost is \$2.50 for students and \$5 for non-students. For more information, contact Ave Alvarado, director of Minority Services, at 785-4142.
- ▶ 7 p.m.—**Society for Creative Anachronism** first bi-weekly meeting, Violette Hall 140.
- ▶ 8 p.m.—**Faculty piano recital**, featuring David McKamie, assistant professor of music, Baldwin Auditorium. The program will feature works by Franz Schubert and Claude Debussy.

21 TUESDAY

- ▶ 6 p.m.—**American Marketing Association** open meeting, SUB Activities Room

22 WEDNESDAY

- ▶ **Student Activities Board** application deadline
- ▶ 6 p.m.—**Women's basketball** vs. Central Missouri State University, Pershing Arena
- ▶ 7 p.m.—**Open E-mail course**, Violette Hall 248. See Notes.
- Melissa Rose**, assistant professor of music, will give a talk on her recent trip to Russia, Ophelia Parrish 300.
- ▶ 7:10 p.m.—**Lutheran Student House** open house, 1307 S. Florence behind Ryle Hall
- ▶ 8 p.m.—**Men's basketball** vs. Central Missouri State University, Pershing Arena
- Fantasy Club** weekly meeting, Violette Hall 170

23 THURSDAY

- ▶ 7 p.m.—**"Devil Worship: The Rise of Satanism,"** presented by Jon Rittenhouse, sponsored by the Campus Crusade for Christ, Pershing Arena
- Amnesty International** general meeting, Violette Hall 171
- Campus Volunteers** meeting, Violette Hall 121

24 FRIDAY

- ▶ 4-6 p.m.—**Open house** for university faculty and staff, 516 Patterson, the new clubhouse east of Ryle and Violette halls. Come meet the new headquarters, socialize with colleagues and help plan future uses of this gathering place.
- ▶ 7 and 9-30 p.m.—**"Backdraft,"** SAB movie, Baldwin Auditorium. Admission is \$2 or free with an SAB sticker.

25 SATURDAY

- ▶ **VIP Visit Event**
- ▶ 8 p.m.—**An Evening of Egyptian Ecstasy 1992.** Black and Gold Pageant and Ball, sponsored by Alpha Phi Alpha, Days Inn. Cost is \$3 in advance, \$3.50 at the door. Tickets will be sold throughout the week in McClain Hall.

27 MONDAY

- ▶ 7 p.m.—**Linda Jones**, from the National Audubon Society will give a talk on Kirkville being chosen as a pilot project for the Society's Community Solid Waste program, SUB Activities Room. See Notes.

CPC UPDATE

For more information, call the Career Placement Center at 785-4353 or stop by McKinney Center. Sign-up folders for each recruitment visit are posted two weeks before interview date. Remember to register with the CPC prior to signing up for interviews.

- Jan. 24** ABC Laboratories-resumes due for prescreening
- Jan. 28** Columbia Police Department-interviews for police officer (criminal justice majors)
- Hormel**-resumes due for processing
- Jan. 29** ABC Laboratories-interviews for entry-level chemist and summer internship positions
- Feb. 3** Hormel-preview session, 7 p.m. CPC
- Feb. 4** Hormel-interviews for meat and grocery products sales representatives, computer analyst, staff accountant, quality and process control engineer, production management positions (May and August graduates).
- Feb. 11** Aldi Inc.-preview session, 7 p.m., CPC
- Feb. 12** Aldi Inc.-interviews for district supervisor (May graduates, GPA 2.75 or above).

New Emergency Number

Safety and Security now has an emergency campus telephone line with the easy-to-remember extension X5555. This is in addition to the current emergency call line for reporting sexual assault, 627-HELP (4357). These lines are both for emergency calls only.

Safety and Security has made no change in the primary telephone numbers, as listed in the NMSU Faculty/Staff Directory. They will continue to maintain 785-4176 as the primary communications number with 785-4177 designated for vehicle scheduling and 785-4179 designated for vehicle control.

Counseling Services

Drug and alcohol abuse, marital problems and depression have been identified as the three major mental health problems in northeast Missouri. Likewise, the top three approaches to address these problems were identified as groups, pastoral counseling and professional counseling by George Gehant, a UMC Extension Mental Health Specialist. The following is a list of the support groups available in Kirksville and their respective contacts.

Alzheimer's Disease and Related Disorders Association

(816) 626-2049; (800) 428-3376
(Doris Fountain)

American Cancer Society

(816) 626-2284; (800) 428-3376
(Pam Walker)

American Diabetes Association

(816) 785-3731 (Mary Updyke)

American Lung Association

For persons with pulmonary disease and their families.

(816) 785-3906 (Cindy Mayberry)

Multiple Sclerosis Society

(816) 665-6716 (Susan Jackson)

Northeast Missouri Regional Arthritis Center

(816) 626-2049; (800) 428-3376

(Doris Fountain)

Region II Council for Developmental Disabilities

For persons with epilepsy and their families.
(816) 785-2500 (Debbie DeLaney)

Violence Intervention Services

For persons who have experienced domestic violence and sexual assault.
(816) 665-1617 (Kim LeBaron)

If you or someone you know is in need of a support group not included in this list, call the Center for Service-Learning at 785-4572.