



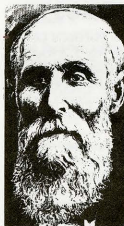
# NORTHEAST TODAY

▶ VOL. 16 NO. 1 ◀

Northeast Missouri State University

January 13, 1992

## Northeast's 125th Year: In Memory of Joseph Baldwin



*One-hundred twenty-five years ago, Joseph Baldwin opened the North Missouri Normal School and Commercial College in Kirksville. His primary mission for the college was to fill the shortage of teachers in north Missouri.*

*Throughout this year and into 1993, Northeast Missouri State will be commemorating its past and celebrating its future. Details of events will be included in future issues of Northeast Today. In observance of the 125th anniversary, Northeast Today will focus on various aspects of the University's rich history. It is only fitting that the first issue of this year feature Northeast's founder Joseph Baldwin on the anniversary of his death (Jan. 13, 1899).*

Born in New Castle, Penn., Joseph Baldwin received his early education at district schools and preparatory education at Bartlett Academy in New Castle. He received his bachelor's degree from Bethany College in Virginia and later attended the Lancaster County Normal School at Millersville in Pennsylvania.

Before coming to Kirksville, he and his wife, Ella Sophronia Fluhart, opened Platte City Academy in Platte County, Mo. Together, they undertook management of a ladies' boarding school at Savannah, Mo. Baldwin

helped organize the Missouri State Teachers Association in St. Louis and was elected vice president of the organization. In addition to Kirksville, Baldwin ran private normal schools at Burnettsville and Kokomo in Indiana. He also served in the Union Army.

In 1881, Baldwin was elected president of the Sam Houston Normal Institute at Huntsville, Texas. He was later elected chair of pedagogy and professor emeritus of pedagogy at the University of Texas. He died at age 72 in Austin, Texas.

THE  
LYCEUM SERIES  
PRESENTS THE

## Saint Louis Symphony Orchestra

8 p.m.

Wednesday, January 15  
Baldwin Auditorium

Tickets are available for students,  
faculty and staff in the Student Activities  
Board Office, SUB.

## Tel-Alumni 1992 Goal Set At \$120,000

The 12th annual Tel-Alumni campaign is scheduled for Jan. 19 through Feb. 20. Tel-Alumni is a phone-a-thon that raises private support for the NMSU Development Fund; the event is organized by the Alumni/Development Office and Student Senate. This year's goal is \$120,000.

Approximately 450 faculty, staff and student volunteers will attempt to contact more than 14,000 alumni across the country.

Calling will be segmented by academic divisions. Thirty phones, located in the Student Union Building Rooms 2 and 3, will be used each evening, Sunday through Thursday from 6:15 to 9:15 p.m. Volunteers will be given a complimentary meal, soft drinks while calling, nightly prizes and after completing three hours of service, a three-minute phone call anywhere in the nation.

cont. pg. 2

## Auditors Review NMSU Expenditure Patterns

As part of routine financial audits of the university each year by the international accounting firm, Coopers & Lybrand, auditors review the financial expenditures of the university and make recommendations for improvement. Because of two recent issues in higher education, one national and the other within Missouri, university administration took a closer look at certain operations, and the Board of Governors asked the auditors to do the same.

Recent national attention has focused on an increase in expenditures throughout higher education for institutional support categories, while there has been a significantly smaller increase, and in some cases a decrease, in expenditures related to instruction and research. Institutional support is generally understood to include the costs of administrative functions and salaries for those employees, while

instruction and research comprise faculty salaries and related educational costs.

However, findings of the NMSU audit by Coopers & Lybrand show a very different picture. As a percentage of total budget in 1985, Northeast spent 54.21 percent on instruction and research compared to 10.23 percent on institutional support. By 1990, the instruction and research percentages were up 4.6 percent to 58.81 percent while institutional support had declined 2.1 percent to an overall 8.11 percent of the total budget.

In the first year of the Warren administration, spending on instruction and research rose to 59.4 percent, while spending on institutional support stayed essentially the same at 8.2 percent, the second lowest annual percentage in this category since 1985. These results are especially noteworthy because of

cont. pg. 2

## Health Insurance Procedures For 1991 Claims

The University changed health insurance claims processors effective Jan. 1, 1992. Following is the procedure for submitting claims incurred during 1991.

For services provided prior to Sept. 1, 1991, submit claims on the Blue Cross of Kansas City forms to Blue Cross Blue Shield of Kansas City. This includes doctor bills and hospital bills for services prior to Sept. 1, 1991.

For services provided on or after Sept. 1, 1991, submit claims on the Blue Cross of Missouri forms. Mail the forms to Blue Cross Blue Shield of Missouri (address on back of form). This includes doctor bills and hospital bills for services after Sept. 1, 1991.

Claims in process for services rendered after Sept. 1, 1991, but not paid at Blue Cross/Blue Shield of Kansas City as of

Jan. 10, 1992, will be transferred to Blue Cross of Missouri for payment. This means you may have submitted a claim to Blue Cross of Kansas City but the payment will come from Blue Cross of Missouri. We expect to receive claim forms this week and they will be distributed to all faculty and staff members as soon as possible. Additions to the alliance physicians network list will be published in the near future.

## President's Leadership Experience Application Procedures

The President's Leadership Experience provides you with the opportunity to spend two working days with President Warren. Whatever President Warren does during those two days, you will be right there, in on it all.

Two candidates will be chosen for Leadership Experiences this semester. Application is open to any student in good academic standing with a record of, and commitment to, excellence in leadership.

To apply, you should submit an essay, 500 words or less, describing your record of leadership on and/or off campus, and your commitment to leadership suggested by professional aspirations. The essay should address why you seek the President's Leadership Experience and how it would prove beneficial to you. Please include address and telephone numbers. A resume (optional) may be included with the essay.

Applications should be submitted at the

front desk of the Career Placement Center no later than 5 p.m. on Feb. 5. A selection committee will evaluate applications and determine finalists to be interviewed the week of Feb. 10. The committee's decision shall be final. Selected candidates will be notified by Feb. 14.

Dates for the Leadership Experiences will be chosen to accommodate schedules of both President Warren and the selected students.

## Auditor cont.

significant budget revisions made throughout fiscal year 1991 due to the shortfall in state funding.

Over the entire six periods reviewed, the percentage of budget spent on instruction and research increased by approximately 10 percent, while administrative costs decreased by 20 percent.

In a second issue which grew out of revelations concerning possible mismanagement of funds at St. Louis Community College, the Board of Governors asked Coopers & Lybrand to look at the management of funds at NMSU. As a part of their normal auditing procedures, including a review of top administrative expenditure reports in the offices of the Deans, the Vice President and the President, Coopers & Lybrand observed nothing out of the ordinary in the Northeast records.

Auditors did note that two areas, early retirement plans and the general area of formalized administrative policies, needed additional work and review. Both areas have been undergoing administrative change in the last fiscal year, but are not yet problem-free.

The audit indicates the university continues to place carefully its resources on the highest priority of faculty, classroom teaching and research.

## Tel-Alumni cont.

Proceeds from Tel-Alumni are placed in the NMSU Development Fund, an agency of the University, which receives, manages and distributes all private financial support given to NMSU. Assets of the Fund are invested and the resulting interest income provides funding for scholarships, student loans, instructional support and other projects supplementing state funding.

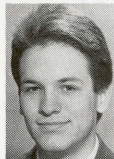
In addition to raising money, Tel-Alumni serves as a valuable source of information to the Alumni Office, providing updates on alumni addresses, phone numbers, careers and personal news.

For more information on Tel-Alumni or if you or your organization, fraternity or sorority is interested in volunteering, please call one of the co-coordinators below or contact the Alumni/Development Office, McClain Hall 106 at 785-4133.

Organizations, Fraternities and Sororities	
Bob Behnen	785-4133
Business and Accountancy	
Lynne Roberts	785-4346
Communication Disorders	
Kaas Koutstaal	785-4669
Education	
Eva Jane Noe & Randy Parker	785-4383
Family Science	
Dr. Lois Korslund	785-4472
Fine Arts	
Bob Jones, Julianna Moore & Lee Orchard	785-4417
Health & Exercise Science	
Bill Richerson	785-4456

Language & Literature	
Barry Poyner	785-4481
Math & Computer Science	
Sam Lesseig & Donna Bailey	785-4547
Nursing	
Dr. Elsie Simms	785-4557
Science	
Mike Nelson	785-4597
Social Science	
James J. Lyons	785-4636

## Christofferson Named to Board



Freshman Philip Christofferson, a pre-law/political science major from St. Louis, has been appointed by Gov. John Ashcroft to serve a two-year term as the student representative to Northeast's Board of Governors.

Christofferson is a freshman representative to the Student Senate and serves on several external committees. He is a graduate of Oakville High School, where he was valedictorian of his class and Outstanding Student Leader in 1991. He has attended several leadership workshops including the Missouri Scholars Academy and the St. Louis Student Leadership Convention. He is a National Merit Scholar as well as a Pershing Scholar at Northeast.

# Notables

**Benjamin Bennani**, associate professor of English and editor of *Painbrush: A Journal of Poetry, Translations, and Letters*, and *Bestia: Yearbook of the Best Fable Society*, has an essay titled "The Child of the Poet, the Poet of the Child" published in a collection of essays commemorating the creation of the Kahill Gibran Memorial Garden in Washington, D.C., a gift of the people of the United States of America. Other works by Bennani, two poems, "Primal Sympathy" and "Caffeine," have been accepted for publication by *River Styx Magazine* in St. Louis.

**Brent Buckner**, assistant professor of biology, is working on introducing the  $\gamma 1$  gene of yellow maize into white rice so that the rice will contain beta-carotene. This event will mean the introduction of vitamin A into the lives of children living in third world countries.

**Anthony Cooperwood**, a junior piano major, recently won second place in the Junior-Senior Collegiate Honors Piano Competition held at the Missouri Music Teachers State Convention. Cooperwood competed against 24 pianists. He is a student of David McKame, associate professor of music.

**Marlow Ediger**, professor of education, has had the following manuscripts accepted for publication: "Creativity and Science," in *The Texas Science Teacher*; "Two Dozen Ways to Replace Book Reports," in *the Virginia English Bulletin*; and "The Affective Dimension in Middle School Reading," in *Middle Education*.

**Kurt Glaesemann**, a junior chemistry major, presented his paper, "Indirect Fluorometric Detection of Cholesterol and Cholesterol in Human Serum Separated by Thin Layer Chromatography," at the Argonne Undergraduate Symposium.

**Robert Graber**, associate professor of anthropology, has been elected into fellowship of the American Anthropological Association, which recognizes those making significant scholarly contributions to anthropology. Graber has written a series of articles linking aspects of psychology, demography and human culture.

**James A. Harmon**, assistant professor of humanities and allied arts, has had a paper "Measure and Order in Manuscripts from Charlemagne's Court School," accepted by the Steering Committee for the Seminar in the History of the Book to 1500, Trinity College, Oxford University for the July 10-12 1992 conference, The Making of the Medieval Book.

**Lewis B. Hershey**, II, assistant professor of business administration, has had "Re-examined the Peripheral Persuasion Concept" accepted for publication in *Marketing Theory & Applica-*

*tions*, Vol. 3 of the AMA Winter Educator's Conference Proceedings.

**Cornelis Koutstaal**, head of the Communications Disorders division and professor of communication disorders, chaired a mini-seminar on microcomputer-assisted speech assessment and treatment during the annual conference of the American Speech-Language-Hearing Association in Atlanta.

**Robin Lukefahr** and **Jennifer DiMuzio**, academic planning services counselors, recently presented a program at the Missouri College Personnel Association Conference in Columbia, Mo. Their program explored the subject of integrating advising into the residence hall environment.

**Paula Presley**, assistant editor of Thomas Jefferson University Press, received a master's degree in library and information science from the University of Iowa on Dec. 21, 1991.

**Sgt. Maj. Victor Rosentreter**, chief instructor in the military science division, was selected as the Cadet Command nominee for the U.S. Army Training and Doctrine Command Instructor of the Year. Cadet Command is comprised of the 350 Army ROTC programs in the nation.

## Sheffield Joins ITC

Brian Sheffield has joined the staff of the Instructional Technology Center as a microcomputer support specialist. This position provides technical support for faculty by assisting with microcomputer hardware/software installations and trouble-shooting equipment problems.

Sheffield has a Bachelor of Science in electronics engineering technology from the University of Southern Mississippi. He is a candidate for a Master of Science in manufacturing technology from the same institution. While at Southern Mississippi, Sheffield worked as an electronic technician and instructed freshman electronic laboratory courses. He is a member of the Institute of Electrical and Electronics Engineers, and of the Society of Manufacturing Engineers.

**Rick Sluder**, assistant professor of justice systems, had a review of Civil Liberties on American Policing by Rolando V. del Carmen published in the January 1992 edition of *Police Forum*. Sluder also co-authored an article titled "Factors Related to Probation Workers' Opinion About Firearms: An Exploratory Study," published in the November/December issue of the *Texas Journal of Corrections*.

**David Cratis Williams**, assistant professor of communication, had his article "Argumentation and Aesthetic Form" included in *Argument in Controversy*, published by the Speech Communication Association.

## New Faculty

This is the second in a series of profiles featuring new faculty.



**John Brockway Schmor**, assistant professor of theatre, comes to Northeast from the University of Oregon, where he was a graduate teaching assistant. He received his Bachelor of Arts in humanities and Russian in 1984 from Willamette University and his master's in 1989 and his doctorate in 1991, both in theatre arts, from the University of Oregon. Schmor has been published in *Studies in Communication and Culture*.



**Jeffrey Osborn**, assistant professor of biology, comes to Northeast from Ohio State University, where he was a presidential fellow. He received his bachelor's in marine biology in 1985 and his master's in biology in 1987, both from Southwestern Texas State University. Osborn received his doctorate in plant biology from Ohio State University in 1991. He has had articles published in the *American Journal of Botany and Mycologia*.



**Randall Parker**, coordinator of field experiences and assistant professor of education, comes to Northeast from the University of Mississippi, where he was a graduate research and teaching assistant. He received his Bachelor of Music Education from Northeast Louisiana University in 1977 and his Master of Science in Music Education from the University of Illinois in 1980. Parker received his doctorate in education from the University of Mississippi in 1991. He has been published in *The Researcher* and has given a presentation to the Mid-South Educational Research Association.



**Amarilis Hidalgo-Dejesus**, assistant professor of Spanish, comes to the University from the University of Colorado-Boulder, where she was a graduate part-time instructor. Hidalgo-Dejesus received her bachelor's from the University of Puerto Rico in 1984 and her master's from Temple University in 1987. She received her doctorate from the University of Colorado-Boulder in 1991. She has been published in *Revista de estudios latinoamericanos y colombianos* and *Revista del Colegio Universitario de Cayey*.

# This Week

## 13 MONDAY

- ▶ 7:30 a.m.—Spring semester opens
- ▶ **Classes begin**
- ▶ **Late registration begins**
- ▶ 7:30 p.m.—Men's basketball vs. Culver-Stockton College, Pershing Arena

## 14 TUESDAY

- ▶ **College Level Examination Program**, McClain Hall 103
- ▶ 9 a.m.—**Comprehensive English Language Test**, McClain Hall 103
- ▶ 4-4:30 p.m.—**CPC and You: An Orientation for Seniors**, Violette Hall 252; also Jan. 15, Violette Hall 228 and Jan. 16, Violette Hall 252

## 15 WEDNESDAY

- ▶ 3:30-5:30 p.m.—"Women: A World View," seminar sponsored by Laura Zimmer-Tamakoshi, assistant professor of anthropology, SUB Activities Room. See Notes.
- ▶ 6 p.m.—**Women's basketball** vs. Northwest Missouri State University, Pershing Arena
- ▶ 8 p.m.—**Saint Louis Symphony Orchestra**, Lyceum Series presentation, Baldwin Auditorium
- ▶ **Men's basketball** vs. Northwest Missouri State University, Pershing Arena

## 17 FRIDAY

- ▶ 8 a.m.—**General Education Development Test**, McClain Hall 103
- ▶ 7 and 9:30 p.m.—"Dead Again," SAB movie, Baldwin Auditorium. Admission is \$2 or free with an SAB sticker.
- ▶ 9 p.m.-1 a.m.—**Campus-wide New Year's Mixer**, sponsored by the Student Activities Board, Kirk Gym.

## 18 SATURDAY

- ▶ 9 a.m.—**Real Estate Licensing Exam**, McClain Hall 103
- ▶ 7 p.m.—**Men's and women's swimming** vs. St. Louis University, Pershing Building Natatorium
- ▶ 7 and 9:30 p.m.—"Fisher King," SAB movie, Baldwin Auditorium. Admission is \$2 or free with an SAB sticker.

## 20 MONDAY

- ▶ **Martin Luther King, Jr. Day**
- ▶ 2:30-4:30 p.m.—**Symposium** on "I Have a Dream" in honor of Dr. Martin Luther King, Jr., sponsored by the Social Science Division, SUB Activities Room. Printed copies of the speech "I Have a Dream" will be available in

the Social Science Division Office, McClain Hall 214.

- ▶ 5:30 p.m.—**Elementary Education Club meeting**, Violette Hall 119, featuring Charlene Cassidy, second-grade teacher at Benton School.
- ▶ 6 p.m.—"**Hear My Cry: An Anthology of King**," ceremony and banquet in honor of Dr. Martin Luther King, Jr., sponsored by Minority Services and the Cultural Programming Coalition, SUB Georgian Room. Cost is \$2.50 for students and \$5 for non-students. For more information, contact Ave Alvarado, director of Minority Services, at 785-4142.
- ▶ 8 p.m.—**Faculty piano recital**, featuring David McKamie, associate professor of music, Baldwin Auditorium. The program will feature works by Franz Schubert and Claude Debussy.

## NOTES

**Safety and Security's** phone number has been changed to 785-5555.

**Missouri Teacher Education Scholarship** applications for the 1992-93 school year are now available in the Financial Aid Office, McClain Hall 100. Applicants must be Missouri residents in their freshman or sophomore year majoring in education. Requirements and conditions are available from the Financial Aid Office. Application deadline is Feb. 15, 1992.

**Scholarship applications** for the 1991-92 Applegate/Jackson/Parks Future Scholarship are available in the Financial Aid Office, McClain Hall 100. This \$1,000 scholarship is sponsored by Concerned Educators Against Forced Unionism and is open to undergraduate education majors. Applications must be submitted by April 30, 1992.

**Journalism students** may apply for the William B. Ruggles Scholarship sponsored by the National Right to Work Committee. Applicants must submit an essay demonstrating an interest in and a knowledge of the Right to Work principle. Applications are available in the Financial Aid Office, McClain Hall 100. Deadline is March 31, 1992.

**Scholarship applications** from the Society of Manufacturing Engineers are available in the Financial Aid Office, McClain Hall 100. Thirteen \$500 scholarships will be awarded to full-time undergraduate students in manufacturing engineering or manufacturing engineering technology. One \$1,000 scholarship will be awarded to a full-time undergraduate student seeking a career in robotics/automated systems. Application deadline is March 1, 1992.

**Financial Aid applicants**—NOW is the time to pick up your ACT Family Financial Statement packets for the 1992-93 school year in the Financial Aid Office, McClain Hall 100. You must complete this application if you wish to apply for the Pell Grant, Supplemental Educational Opportunity Grant, Perkins Loan, Workstudy, Stafford Student Loan (formerly Guaranteed Student Loan) or Missouri Grant. Apply early. Call the Financial Aid Office at 785-4130 or stop by if you have questions or would like to make an appointment.

**All students/faculty** interested in overseas teaching or in the education of students from other cultures are invited to hear Catherine Grone, American teacher in Australia, discuss her teaching experience with Aboriginal children at 9:30-11 a.m. or 12-1:30 p.m. on Jan. 15. Call the Division of Education at 785-4383 for location.

**Student Activities Board** applications are available in the SAB Office, SUB. Applications are due Jan. 22.

**The Center for Service-Learning**, in cooperation with the Social Security Administration, is seeking volunteers to assist disabled and elderly social security recipients manage their monthly benefit. Students, faculty or staff living in Kirksville year-round are preferred. Those interested in volunteering should contact Terry Kelly in Barnett Hall 232 at 785-4265.

**Full- and part-time summer positions** are available through the Upward Bound Office in Kirk Building 220. Tentative open positions include residence hall staff, program counselor, resident photographer and instructors in math, chemistry, social science, Writing Lab and career exploration. Application packets for faculty and residence hall staff are due Jan. 31.

**Non-traditional women students** (age 30 or above) are invited to apply for various scholarships administered by Business and Professional Women's Foundation. Scholarships are also available for women ages 25 and older studying in health care fields. In addition, women seeking education in graduate business studies may apply for low-interest loans through BPWF. Information is available in the Financial Aid Office, McClain Hall 100.

**A seminar** titled "Women: A World View," will be held from 3:30-5:30 p.m. Jan. 15 in the SUB Activities Room. Speakers will include Godfrey Muriuki, visiting Fulbright professor of African history; Heping Liu, assistant professor of Asian history; Amarilis Hidalgo-Dejesus, assistant professor of Spanish; and Silvia Pites, assistant professor of Spanish.