

# Northeast Today



MONDAY, March 15, 1982

## HAPPENINGS

### MONDAY, March 15

- 3:30-4:30 p.m. Job workshop, 228 VH  
5-7 p.m. Cheerleading clinic, Kirk Gym  
7:30 p.m. Wildlife biologist speaker, 112 SH

### TUESDAY, March 16

- 3:30-4:30 p.m. Cheerleading clinic, 130 PB  
7:30 p.m. Freedom of Info. panel, Alum. Rm., SUB  
8:30 p.m. SIP mtg., Rm. 5, SUB

### WEDNESDAY, March 17

- 3 p.m.-1 a.m. St. Pat's party, The Oz  
5-7 p.m. Cheerleading clinic, Kirk Gym  
7 p.m. Ice Capades mtg., Rm. 4, SUB  
Child abuse speaker, Tang. Rm., SUB  
7 & 9 p.m. "The Deep," Aud., BH  
7:30 p.m. Awards Assembly, Geo. Rm., SUB

### THURSDAY, March 18

- 9 a.m. Voter registration begins, SUB  
3:30 p.m. Cheerleading try-outs, Kirk Gym  
4 & 7 p.m. Film fest., Tang. Rm., SUB & 1st Natl.  
5-7 p.m. Science Fair, Kirk Gym  
7:30 p.m. Wilderness prog. slide show, 234 PB  
Sport Parachute Club mtg., Rm. 4, SUB  
BSU revival, basement, Bapt. Std. Ctr.  
9 p.m. Come-Unity service, Act. Rm., SUB

### FRIDAY, March 19

- 8 a.m. Dist. Speech Festival, SUB  
7 & 9 p.m. "Wolfen," Aud., BH

### SATURDAY, March 20

- 8 a.m. Dist. Speech Festival, A/H, BH & LB  
Blue Key Scholar Quiz, SUB  
9 a.m.-1 p.m. Vol. Income Tax Assist., 140 VH

### SUNDAY, March 21

- 5-7 p.m. International dinner, Geo. Rm., SUB  
7 & 9 p.m. "Game of Death," Aud., BH

**THE 25TH ANNUAL BALDWIN LECTURE** will feature Richard Sullivan, professor of medieval and early European history at Michigan State University. Sullivan also served on the NMSU faculty from 1949 to 1954. The lecture will be held at 6:30 p.m. March 30 in the Georgian Room, Student Union Building, and takes place in conjunction with the University's annual service recognition ceremony. Admission is \$6 and reservations can be made through the Alumni Office, McKinney Center.

**RESIDENCE HALL STUDENTS** wishing to sign up for a residence hall room for the 1982-83 academic year must submit a \$25 pre-payment to the Business Office, 105 Administration/Humanities Building, prior to the March 31 to April 1 contract renewal period.

**THE LAST DAY TO WITHDRAW** from school and to drop full semester courses with a code is Wednesday.

**SPRING GRADUATES** who have not already done so should complete an order form for their caps and gowns. They may be picked up in the Purchasing Office, 108 Administration/Humanities Building. The cost is included in graduation fees; however, a \$5 late charge will be assessed to those who fail to return the order form by Thursday.

**A HOMEMADE BREAD SALE** begins at 8 a.m. today at the west entrance of Violette Hall. It is sponsored by the Student Member Section of the American Home Economics Association.

**HOW MANY GREEN JELLYBEANS** are in the jug? is being asked of passersby for 25 cents from 9 a.m. to 5 p.m. today through Wednesday in the Student Union Building. The contest is sponsored by Alpha Phi Omega service fraternity and the winner will be given the jug of jellybeans and a prize.

**"JONI"** will be shown at the Kennedy Theatre from Wednesday to March 25. The United Campus Ministry will sell advance tickets with a 75 cent discount from 11:30 a.m. to 2:30 p.m. today and 9:30 a.m. to 2:30 p.m. Tuesday in the Student Union Building.

**CHEERLEADING TRY-OUTS** for men and women will be held this week. The schedule for the information meeting, clinics and try-outs is:

- Monday Clinic, 5-7 p.m., Kirk Gym  
Tuesday Clinic, 3:30-4:30 p.m., 130 PB  
Wednesday Clinic, 5-7 p.m., Kirk Gym  
Thursday Try-outs, 3:30 p.m., Kirk Gym

For further information call the Student Activities Office, 785-4922.

For further information call the Student Activities Office, 785-4922.

**WHAT COLOR IS YOUR PARACHUTE?**, a job seeking skills workshop, will be held from 3:30-4:30 p.m. today in 228 Violette Hall. The workshop will be presented once a month with sign-up in the Career Planning and Placements Office, first floor, Blanton Hall. It is limited to 15 participants.

**THE WILDLIFE LAND MANAGEMENT BIOLOGIST** for the Northeast Missouri area, George Buckner of the Missouri Department of Conservation, will be the guest speaker at an open meeting of the Chariton Valley Audubon Society at 7:30 p.m. today in 112 Science Hall.

**A FREEDOM OF INFORMATION DAY** panel discussion concerning the use of cameras and microphones in Missouri's courtrooms will take place at 7:30 p.m. Tuesday in the Alumni Room, Student Union Building. Panelists include Joyce Otten, associate circuit judge of Adair County; a representative of the Missouri Bar Association; and members of the working media. The event is sponsored by the Society of Professional Journalists/Sigma Delta Chi.

**THE STUDENTS INDEPENDENT PARTY** will meet at 8:30 p.m. Tuesday in Room 5, Student Union Building. Officers will be elected and any student interested in the 1982-83 Student Senate should attend. If there are any questions contact Mark Bersted, president, at 665-4931.

**A TORNADO DRILL** will be held Wednesday at an unannounced time. See related article on back for more details.

**A ST. PATRICK'S DAY SALE** of bagels and cream cheese for 45 cents a piece will take place from 8:30 a.m. to 3:30 p.m. Wednesday at the north entrance of Violette Hall. The sale is sponsored by the students in Monica DiGiovanni's Principles of Management class.

**JUMP ROPE FOR HEART** participants should turn in pledges from 2-4 p.m. Wednesday-Friday and March 22-26 at a table on the balcony of the Natatorium in Pershing Building. Captains should turn in their team's total pledges collected and team member's shirt sizes. The money raised goes to the American Heart Association.

**A ST. PAT'S PARTY AT THE OZ** with the "Hit Men" of KRXL will be held from 3 p.m. to 1 a.m. Wednesday. Partial proceeds from the party will go to the Student Senate Emergency Loan Fund. Tickets will be sold Wednesday in the Student Union Concourse and door prizes will be given away that night.

**A TRIP TO THE ICE CAPEDES** in St. Louis will take place March 27 if more than 20 people are interested. A sign-up sheet is in the Student Activities Board Office, Student Union Building, and tickets are \$12 with an I.D. and \$11 with an SAB card. An organizational meeting will be held at 7 p.m. Wednesday in Room 4, SUB.

**A SPEAKER ON CHILD ABUSE**, Lanny Stiles from the Kirksville College of Osteopathic Medicine, will appear at an open meeting of the Psychology Club at 7 p.m. Wednesday in the Tangerine Room, Student Union Building.

**"THE DEEP"** will be shown at 7 and 9 p.m. Wednesday in Baldwin Hall Auditorium. Tickets are \$1.50 in advance at the Student Union Building today through Wednesday and \$2 at the door. The event is sponsored by Sigma Tau Gamma social fraternity.

**THE ANNUAL HONOR AWARDS ASSEMBLY**, recognizing NMSU students who have won awards or scholarships, will be held at 7:30 p.m. Wednesday in the Georgian Room, Student Union Building. All students receiving awards should attend and other students, faculty and staff are invited.

**A VOTER REGISTRATION TABLE** will be set up in the Student Union Building from 9 a.m. to 4 p.m. Thursday. The project is sponsored by Student Senate, College Republicans and Young Democrats.

**THE MISSOURI JUNIOR ACADEMY OF SCIENCE** and Regional Science Fair joint conference will be held on Thursday. Science Fair projects may be viewed from 5-7 p.m. in Kirk Gymnasium.

**A WORLD PEACE GROUP FILM FESTIVAL** will feature the movies "A Tale of Two Cities: Hiroshima and Nagasaki," and "Nuclear Countdown," concerning arms escalation. The movies are free and will be shown at 4 p.m. in the Tangerine Room, Student Union Building, and at 7 p.m. at the 1st National Bank, Harrison & Elson.

**THE NATIONAL OUTDOOR LEADERSHIP SCHOOL** will present a slide show at an open meeting of the Recreation Club at 7:30 p.m. Thursday in 234 Pershing Building introducing various year-round wilderness programs offered by NOLS in Wyoming, Washington, Utah, Alaska, Mexico and Kenya. The objectives of the NOLS course are to teach outdoor skills, develop leadership capacity, instill appreciation for nature and stress minimum impact camping techniques.

**THE SPORT PARACHUTE CLUB** will hold an open meeting at 7:30 p.m. in Room 4, Student Union Building, with a skydiver as guest speaker and a display of films and equipment.

**A CAMPUS WIDE REVIVAL** with the theme "Heaven Can Wait or Can It" will be held at 7:30 p.m. Thursday in the basement of the Baptist Student Center, 110 W. Normal. The student speakers are James Preston, junior, Scott Collins and Brent McBride, seniors.

**A COME-UNITY WORSHIP SERVICE** will be held at 9 p.m. in the Activities Room, Student Union Building. It is sponsored by United Campus Ministry.

**INTRAMURAL RECREATIONAL SPORTS** is receiving entries for men's and women's intramural bowling, singles and teams, through Thursday in the I-M Recreation Office, 309 Pershing Building, 785-4467. Schedules will be posted Friday; play will begin March 22. Sign-up for the women's open singles racquetball tournament to be held March 29 through April 2 ends Friday at the I-M Office. A participant's meeting for the tournament will be held at 4 p.m. March 24 in 314 Pershing Building.

**A DISTRICT SPEECH FESTIVAL**, featuring nearly 300 participants from 24 high schools, will begin at 8 a.m. Friday and Saturday. Friday the festival will be held in the Student Union Building and Saturday it will be in the Administration/Humanities Building, Baldwin Hall and Laughlin Building.

**ANY MASS COMMUNICATION MAJOR** with at least a 2.5 grade point average and sophomore status who did not receive an invitation to join the Society of Professional Journalists/Sigma Delta Chi, should contact Todd Eschmann, president, by Friday at 665-9360 or 665-2808. The initiation will be held at 7:30 p.m. March 25 in 304 Administration/Humanities Building and the initiation fee for all candidates must be paid by 5 p.m. March 22 to Jim King, advisor, in 329 A/H.

**"WOLFEN"** will be shown at 7 and 9 p.m. Friday in Baldwin Hall Auditorium. The event is sponsored by the Student Activities Board and is \$1.50 or free with an SAB card.

**VOLUNTEER INCOME TAX ASSISTANCE** is offered from 9 a.m. to 1 p.m. Saturday in 140 Violette Hall for the community and students who need assistance filing federal and state tax returns. VITA is sponsored by the Accounting Club.

**AN INTERNATIONAL DINNER** plus entertainment will be held from 5-7 p.m. Sunday in the Georgian Room, Student Union Building. Tickets are \$4 in advance this week at the SUB, Administration/Humanities Building and hall cafeterias, \$4.50 at the door and \$2 for those under 12 years of age.

**"GAME OF DEATH,"** the last movie made by Bruce Lee, will be shown at 7 and 9 p.m. Sunday in Baldwin Hall Auditorium. Tickets are \$1 in advance Wednesday through Friday in the Student Union Building and \$1.50 at the door.

**A JAPANESE EXCHANGE PROGRAM** with NMSU's sister university in Tokyo, Hosei University, will take place from May 10 through July 23. The program includes eight weeks of intensive instruction on the NMSU campus in the Japanese language and three weeks as a student at Tokyo's Hosei University exploring the countryside and learning the culture first-hand while living with a Japanese family for a portion of the time. Participants can receive 12 hours of credit in Language Arts and an additional three hours in Business, Fine Arts, Language Arts or Social Science. Scholarships are available and the expected costs and fees for the 11-week program should be around \$2,000. An interest meeting for the exchange will be held at 7 p.m. March 24 in the Conference Room, Student Union Building. For more information contact Loring Ivanick, 282 Baldwin Hall, 785-4509.

**A BLOODMOBILE** will be held from 11 a.m. to 4 p.m. on March 29, 30 and 31 in the Activities Room, Student Union Building. It is sponsored by the Pre-Med Tech. Club and the Pre-Osteopathic Club.

**A 1982 WOMEN'S FAIR** will be held April 1 in the Activities Room, Student Union Building. Anyone interested in providing entertainment or an exhibit should contact Shirley Morahan, steering committee chair, at 785-4494.

**A SPRING RUN FOR MUSCULAR DYSTROPHY** sponsored by Cardinal Key service organization will begin at 9 a.m. on April 3. Sign-up for the run is today through March 31. Participants should turn in packets with at least \$10 in donations at 8 a.m. on the day of the run. All entrants will receive a free t-shirt and the person with the top donations will receive a ten-speed BioTour bicycle from Mike the Bike Shop, 113 S. Elson.

**A "ROYAL WEEKEND"** is being sponsored by the Student Activities Board on April 24 and 25. The cost of the trip is \$38, \$36 with an SAB card, and includes lodging in a four-person room at the Sheraton Royal Hotel in Kansas City, Worlds of Fun tickets for Saturday, a hotel brunch on Sunday and transportation to and from Kansas City. Time is allotted on Sunday for a K.C. Royals baseball game, but the tickets are not included in the price above. Sign-up for the weekend is April 1 at the SAB Office, Student Union Building, and the fees for the weekend must be paid at this time.

**SIGN-UP SCHEDULES** for job interviews are posted in the Career Planning and Placement Center, first floor, Blanton Hall. Appointments can be set up for the following interviews:

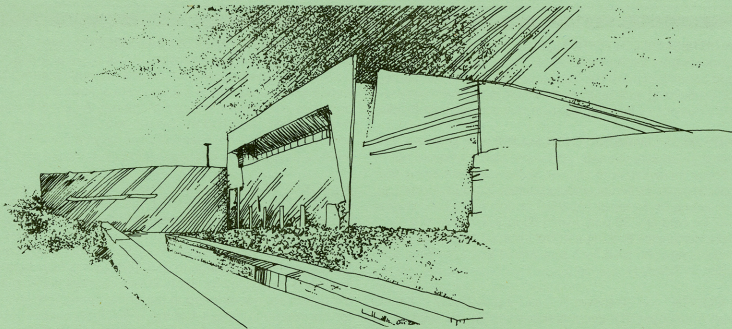
- March 30 Fort Zumwalt School District  
Penn-Daniels Supply Co. (Jack's)
- March 31 Lincoln Public Schools  
Brown Shoe Company
- April 1 Brown Shoe Company  
Federated Insurance

**REQUESTS FOR DISPLAYS** in Pickler Memorial Library are now being taken for the 1982 summer and fall terms. Display facilities include two locked flat cases and a domed table in the lobby, plus a large window in the foyer. The usual display period is two weeks and should be scheduled in advance. Unique collections and exhibits, class projects and hobbies are welcome. For additional information contact Eleanor Ellebracht, Reference Department, PML, 785-4528 or 4534.

**A MEMORIAL SCHOLARSHIP** has been founded in honor of Donna Crawford, former NMSU French teacher, to aid in the continuance of the NMSU foreign language program. All contributions should be sent to: NMSU Foreign Language Department, c/o Language and Literature Division, 310 Administration/Humanities Building.

**A HOMECOMING THEME CONTEST** sponsored by the Student Senate is now underway for students, faculty and staff. The contest deadline is 3 p.m. March 24. Submissions should be turned in to the Student Senate Suggestion Box in the Student Union Building or to residence hall desks. Include your name, address and phone number. The winner will receive a \$25 gift certificate from the Campus Bookstore. A Homecoming theme logo contest will be held in April. The Senate would also like students to turn in ideas for professional entertainment for a Homecoming show.

**THE NORTHEAST NOTES** will be printed in their entirety in the March 22 issue of "Northeast Today".



*The daytime is bad because more people are strung out in the academic area. The nighttime is worse because it's dark and people are sleeping.—Olin "Swede" Johnson, director of Safety and Security.*

## WARNING: It's tornado time

by Cheryl Hash, student intern

Tornadoes are bad at any time and the time is now, Johnson says. Based on a National Weather Service publication, tornadic weather is most likely to occur from March to June between 2 and 8 p.m.

In anticipation of this tornadic weather season, the 8th Annual Statewide Tornado Drill will be conducted at an unannounced time on Wednesday, and if the weather is bad, on Thursday, Johnson says. The drill will "test equipment and call people's attention to the fact that we're entering that season."

Marty Dmytrak, weather broadcaster for KTVO, explains that at this time of the year, cold, dry air from the North moves down and collides with warm, moist gulf air from the South creating tornadic and severe storm conditions. The tornado funnel can be as wide as a mile with winds up to 200 miles per hour.

The meeting point of these fronts is the Midwest, he says, and in fact, the collision line is to the south of St. Louis. Missouri was ranked fifth in the nation with 716 tornadoes in the 23-year period of 1953-1976 which was studied by the National Weather Service. As a result of the tornadoes, 117 people died in Missouri while at the same time, neighboring Iowa had 41 casualties. Dmytrak says, "We (Missouri) probably have maintained the fifth place status because we're in a tornado alley."

The National Weather Service says it will issue a tornado watch when conditions are favorable for a tornado to occur. When a tornado is sighted by the public, Dmytrak says a government authority must confirm that there is a funnel. The National Weather Service will then issue a tornado warning and will notify the Civil Defense Office to sound the sirens in the affected area.

"Our concern is trying to get people warned in time," Johnson says. Once the sirens are sounded, he says people should be alert to what is being said on the radio. It will report the area where the tornado is expected to move and the time period of the warning.

If a tornado warning is issued during class periods, Johnson says he contacts the building coordinators who notify faculty, staff and students in the building.

People should move to a lower floor on an inner hallway, he says. If in a home or apartment with no basement, the bathroom is often the safest place as are places away from appliances. Structures with wide, free-span roofs such as the Pershing Arena area, the newer part of Pickler Memorial Library and Kirk Gym should be avoided. Instead, move to the lowest floor possible away from that roof structure and from windows.

Contrary to the usual practice of opening windows during a tornado warning, a news release from the National Weather Service says to "forget it." Based on a study commissioned of Texas Tech University, "it was found that merely the act of trying to open a window as a tornado approaches is dangerous in itself. The risk of serious injury from flying glass and debris when trying to open a window is greater than any benefit that this gesture might bring."

If unable to get away from windows and potential flying debris, Johnson suggests the best protection would be to get under tables in a kneeling position with hands over the head and the head on the floor. If outside and unable to get to a reinforced structure, move away from the tornado's path at a right angle and lie flat in the nearest depression, such as a ditch or ravine.

Most of all, Johnson says, it is important to "keep calm. Have it (your protection) planned ahead of time—wherever you may be at." Too, if a siren is heard, be sure to pass the word and let others know of the tornado warning.

Dmytrak estimates there were between two and five tornado warnings in the Kirksville area last year due to the dry spring experienced. However, with weather conditions as unpredictable as they can be in Kirksville, a higher amount of tornadic weather could arise this year.

The drill on Wednesday or Thursday will prompt people to be pro-active rather than reactive should such tornadoes strike. Johnson says, "Let's don't say it can't happen to us."