

LYCEUM SERIES

presents
**The Deeply
Rooted
Chicago Dance
Theatre**



Tuesday, Feb. 20
7:30 p.m.
Baldwin Auditorium

*A reception in the
Multicultural Affairs Center,
Adair Building, will immedi-
ately follow the performance.*

Free tickets for students,
faculty and staff are avail-
able in the SAB Office,
SUB.

Two Northeast Students Earn Early Acceptance to Medical School

Northeast will again participate this year in the University of Missouri-Columbia (UMC) School of Medicine Medical Scholars Program, a pre-matriculation program for rural students. The Medical Scholars Program is designed to address the declining level of health care available in the small towns and rural areas of Missouri. Two advancing Northeast freshmen, plus two alternates, are selected for this program annually. James Matthew Freer of Farmington, Mo., and Sarah Kathryn Garwood of Nevada, Mo., were selected as Northeast's UMC Rural Scholars.

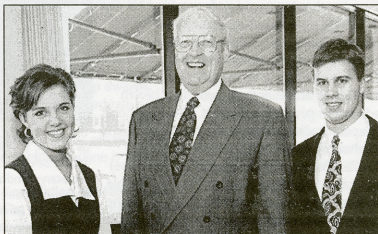
Students selected for this program are offered acceptance to the UMC School of Medicine conditional on their achieving certain academic standards. Northeast participants will be involved in an enrichment program conducted under the auspices of the Kirksville College of Osteopathic Medicine. The program will include opportunities to participate in office and/or hospital practice and possible employment in area hospitals. Periodic activities at the UMC School of Medicine will be scheduled to include seminars and social events. The UMC program coordinator will also arrange summer internships in the participants' home towns.

Nancy Sanders, assistant professor of biology, is Northeast's contact person for students interested in applying for this program this semester. Up to five Northeast students will be selected for interviews in the fall with a committee consisting of two UMC Medical School faculty, two UMC

Medical School alumni and a Northeast faculty member.

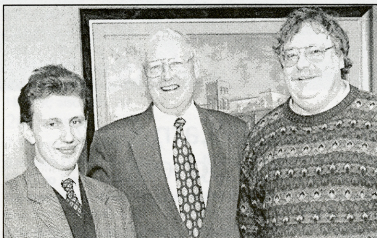
Acceptance in the Missouri Medical Scholars Program is based on high academic achievement, commitment to a career in medicine, possession of personal characteristics expected for quality physicians, and a small town or rural background. Specific requirements are: a Missouri resident; an ACT composite score of 30 or higher; evidence of high academic achievement during high school; evidence of high academic achievement during the first year of college; evidence of leadership and interest in a variety of extracurricular activities; and, achievement of specific MCAT scores during their junior year of college. Selection preference will be given to students who reside in communities of 18,000 people or less.

Application forms for the Missouri Medical Scholars Program can be picked up after the March midterm break from Sanders, Science Hall 118C. Applications are due to Sanders by May 1, 1996.



Sophomores Sarah Garwood and Matthew Freer receive congratulations from President Jack Magruder on their selection for the Medical Scholars Program.

University Explores Russian Programs



Alexander Ruchkin, director of G & R International, met with President Jack Magruder and Patrick Lecaque, director of the Center for International Education Abroad, during Ruchkin's recent visit to campus. Ruchkin came from Moscow to promote various educational programs offered in Russia. He discussed these programs with interested faculty and students.

Support is Appreciated

Dear faculty, staff and students of Northeast,

Thank you for your help and support following the apartment fire that destroyed our belongings. Thanks to you we have been able to move, stock our apartment and obtain clothes and books. Thanks to you we can continue our education.

Vassil Petev
Svetozar Georgiev
Gueorgui Gueorguiev

Garden Plots Available

Garden plots will be available at the University Farm to students, faculty and staff on a first-come, first-serve basis. Send your request to Duane Merlin Ford, 162 Barnett Hall, Science Division. Requests should include your name, address, phone number, the plot size you desire and whether you want a plot in the organic or non-organic gardening section. Applicants will be notified of their plot assignments as soon as the field becomes tillable.

Northeast Establishes Eta Sigma Gamma Chapter

On Jan. 17, Northeast's local chapter of Eta Sigma Gamma received its charter from the Eta Sigma Gamma national professional health science honorary.

In attendance at the ceremony was Dr. Kelly McCormick Brown, national president and the president of the Eta Sigma Gamma chapter at Southern Illinois University-Edwardsville.

As a professional honorary, members are required to have a minimum 2.8 GPA and be pursuing a degree in health sciences. The primary purpose of Eta Sigma Gamma is to further the professional competence and dedication of individual members of the health science profession.

Members of Northeast's Eta Sigma Gamma chapter spend time working on projects both on-campus and out in the northeast Missouri community. Eta Sigma Gamma currently volunteers at the Christian Community Clinic where members check vital signs of patients and conduct health education programs for free. The Northeast chapter is also in charge of coordinating and evaluating the activities of the regional PACE (People with Arthritis Can Exercise) program. Eta Sigma Gamma is responsible for the nutrition table tents placed in all the campus cafeterias every three to six months.

Members also recently conducted a pedestrian crossing study on Patterson Street between Pershing Building and Science Hall. Results of this study found that careless

behavior makes this a dangerous interaction. The results will be made available to the University and the national Eta Sigma Gamma office.

Kevin White, president of Northeast's chapter of Eta Sigma Gamma, is pleased the University's organization has been presented its national charter.

"We all worked hard as individuals and as a team. It took tremendous effort to get where we are and it's just the beginning. We hope to work hard for the community and campus for years to come," White said.



The members of Eta Sigma Gamma posed for a group photo at the chartering ceremony on Jan. 17. Pictured are (front row, l-r): Lanny Morley, vice president for academic affairs; Beverly Triana-Treman, advisor; Scott Gilbert, sergeant-at-arms; Marcia Becker, secretary; Sandra Aguilon, vice president; Kevin White, president; Saskia Farber, guard; Katherine Kraus; Ranjita Misra, advisor; Carolyn Cox, advisor. Middle row: Tammy Oberdieck, Laura Forte, Melissa Corona, Catherine Clements, Theresa Duffy, Kirk Baker, Christine Nickels, Kelli Jones, Rachel Lawton, Gabriel Fisher, Jason Glover, Melissa Johnson, Molly Armstrong, Elizabeth Donovan, Angela Thierer, Amy Evans. Back row: Cornelis Koutstaal, head of the Division of Human Potential & Performance, and Fontaine Piper, director of Health and Exercise Science. Not pictured: Crystal Bieterman, Rachel Kapke, treasurer, and Carla Hepler.

Psychology Club Sponsors Conference

Psi Chi presents its first Psychology Conference on Saturday, March 23, 1996. The conference will feature student research presentations, psychology alumni now in graduate school, and a practicing clinical psychologist as the keynote speaker. The Division of Social Science, the Vice President for Academic Affairs, and Psi Chi are sponsoring the conference. Students studying psychology are encouraged to submit abstracts for review. Abstract submission forms are located on the Psi Chi bulletin board in McClain Hall 206. Students' work can include any of the following: research with faculty, independent research, psych research projects, and/or works in progress. All completed abstracts should be placed in Judi Misale's mailbox in the Division of Social Science. Abstracts are due no later than 1 p.m. on Friday, March 1, 1996.

Scholarship Opportunities

For more information or an application, contact the Financial Aid Office, McClain Hall 103.

The American Institute of Certified Public Accountants is offering the 1996-97 John L. Carey Scholarships of \$5,000 per year for liberal arts undergraduates pursuing graduate studies in accounting. Applicants must express the intention to pursue a CPA certificate. Deadline is April 1, 1996.

The John Gyles Education Fund is offering financial assistance to Canadian or American students in all areas of post-secondary study. A minimum GPA of 2.7 is required. Selected students will receive up to \$2,500. Deadlines for 1996 are April 15, June 15 and Nov. 15.

Family Support Services is issuing applications for the Mark M. Fitz Scholarship Fund and the Mary Cobb Special Needs

Northeast Notables

Jerrold Hirsch, associate professor of history, presented a paper, "We Won't Go Away: Toward a Framework for Understanding the History of the Disability Rights Movement," at the second annual Missouri Disability Rights Conference in Jefferson City, Mo., Feb. 6.

Keith Doubt, associate professor of Sociology/Anthropology, recently received notification that his paper, "We Had to Jump over the Moral Bridge": *Bosnia and the Pathetic Hegemony of Face-Work,* will appear in *The Conceit of Innocence* edited by Stjepan Mestrovic and published by Texas A&M University Press.

Lou Ann Gilchrist, director of University

Counseling Services and David Ream, a Counselor at University Counseling Services, have received notice that their manuscript "Patterns of Student Counseling in Colleges and Universities of the United States" will be published in a special issue of the *International Journal for the Advancement of Counselling.* The journal will present a comparative view of college and university student counseling services on five different continents. In authoring this article, they collaborate with Edwin L. Herr, distinguished professor of education and associate dean of the college of education at The Pennsylvania State University.

Violette Hall Relocation Plan, Estimated Schedule

<u>Description:</u>	<u>From:</u>	<u>To:</u>	<u>Date:</u>
Library Computer Lab	Library 2nd floor	Library 3rd floor	Feb. 12-23
Education Division	Violette Hall	Library Basement	March 4-8
Media Classroom	Library 2nd floor	Library 2nd floor	March 11-15
Violette Hall 102	Violette Hall	Library 2nd floor	March 18-April 19
Violette Hall 248	Violette Hall	Library 3rd floor	March 18-April 19
Faculty Development	Violette Hall	Kirk Memorial 203	May 6-7
Computer Lab VH 185	Violette Hall	Library 2nd floor	May 7-9
Computer Lab VH 100	Violette Hall	Library 3rd floor	May 7-9
Testing Services	Violette Hall	OP 109 and 209	May 13-14
Teacher Technology	Violette Hall	Library 2nd floor	May 15-17
Micro Teaching	Violette Hall	Library 2nd floor	May 15-17
Math/Comp. Science Div	Violette Hall	Library	May 20-June 7
Business/Accountancy Div.	Violette Hall	Brewer Basement	June 10-21

Updated copies of this schedule will be provided as revisions and additions are determined.

Call For Papers

The 1996 NMSU Undergraduate Research Symposium will be held March 29. The deadline for the submission of abstracts is Feb. 27. Copies of the symposium booklet containing instructions, abstract requirements, submission forms and other information about the symposium are available in Division offices and from faculty and undergraduate research committee members. Contact David Leszczynski at 785-4411 or Cynthia Cooper at 785-4082 for more information

Scholarships Fund to juniors and seniors pursuing undergraduate degrees in special education. Deadline is April 30, 1996.

The Campus Safety, Health and Environmental Management Association is offering three \$500 scholarship awards.

Applicants must be an undergraduate or graduate student in a program leading to a degree in occupational safety, environmental health or a related field. Deadline is April 1, 1996.

The Journalism Foundation of Metropolitan St. Louis is offering scholarships to full-time students of journalism or related fields who are residents of the St. Louis metropolitan area. Deadline is March 29, 1996.

This Week

19 Monday

6 p.m. - **Ekklesia (Church of Christ) Devotional Study: "Reasons for My Belief in God,"** Ophelia Parrish 113-A
8 p.m. - **Dobson Peer Academic Counselor informational meeting,** Dobson Hall Pit; also Feb. 20.

20 Tuesday

7:30 p.m. - **Lyceum Series presents Deeply Rooted Chicago Dance Theater,** Baldwin Auditorium. A reception in the Multicultural Affairs Center, Adair Building, will follow.
8 p.m. - **Senior voice recital, Susan Bridgman and Andrew Beard,** SUB Activities Room

21 Wednesday

9 - 11 a.m. - **Introduction to Macintosh WordPerfect,** Barnett Hall 200
8 p.m. - **Wind Symphony Winter Concert,** Baldwin Auditorium
8 p.m. - **Project Two,** Baldwin Hall Little Theatre; through Feb. 24.

22 Thursday

8:30 - 9:30 a.m. - **Introduction to the World Wide Web,** Library Electronic Classroom; also Feb. 23, 9:30-10:30 a.m.
noon - 1 p.m. - **"Heart Healthy Lifestyles" wellness luncheon,** SUB Alumni Room; cost \$2.
3:30 - 5 p.m. - **Dr. John Ikerd and Ms. Laura Bergman** host a seminar on rural America, Science Hall 011
3:30 p.m. - **David Schenker's**

"Unhappy Endings: Homer's Odyssey & Aeschylus' Oresteia," SUB Tangerine Room; reception follows.
7 p.m. - **Violette Museum Open House,** SUB Spanish Room. Following speakers, group will walk to Kirk Memorial rotunda.
7 p.m. - **"Message or Madness?," The Great Debate on Gangster Rap,** SUB Down Under
8 p.m. - **Faculty Recital featuring Randall Smith,** saxophone, **Melissa Rose,** piano, Baldwin Auditorium
9:30 p.m. - **Student Memorial Service for John Bwaldala,** Kirk Memorial Eternal Flame Plaza
23 Friday
1:30 - 3:30 p.m. - **Using on-line help and coaches,** Barnett Hall 200

8 p.m. - **Comedian Tommy Blaze,** SUB Georgian Room
24 Saturday

Phi Mu Alpha sponsors Jazz Festival 28, Kim Richmond, trumpet, Clay Jenkins, saxophone, Baldwin Auditorium
1:30 p.m. - **Women's Basketball vs. Southwest Baptist,** Pershing Arena
3:30 p.m. - **Men's Basketball vs. Southwest Baptist,** Pershing Arena
11:30 p.m. - **Rocky Horror Picture Show,** Kirk Gym

26 Monday

1:30 - 3:30 p.m. - **Introduction to Microsoft Word for IBM/Windows and Macintosh Systems,** Barnett Hall 200
7 p.m. - **Opening reception for the University Art Gallery**
8 p.m. - **Concert Band Winter Concert,** Baldwin Auditorium

Northeast Notes

The Vice President Search Committee continues the selection process. To this date, 59 applications have been received, 57 from off-campus and two from on-campus candidates. There are 23 pending nominations; 13 nominations have been declined. The University community will have the opportunity of interacting with the finalists and providing feedback.

Bright Flight checks are now available to pick up at the Cashier's window. A picture ID must be presented.

Omicron Delta Kappa will recognize individuals and organizations for outstanding external university accomplishments by listing them in a book. For further information or to pick up a submission form, stop by the Student Affairs office in Kirk Building. Forms are due March 1.

The International Student Office is seeking housing for on-campus students staying during midterm break, March 1-10. If you would like to help, call 785-4215.

The 28th annual Antique Sale Extravaganza, sponsored by the Student Associates Auxiliary of the Kirksville College of Osteopathic Medicine, is March 9, 9 a.m. - 5 p.m. and March 10, 11 a.m. - 4 p.m. at the NEMO Fairgrounds.

The Center for Service-Learning will join the Adult Basic Education Program of Kirksville in hosting Laubach Literacy training sessions. Sessions will be held from 6-10 p.m. on April 1, 8 and 15. Students must attend all three sessions to fulfill requirements. Call 785-4265 to sign up.

FREE Tax Help! NMSU Accounting Club will provide income tax assistance on Feb. 24 and March 16 and 23 in Violette Hall 170 from 9 a.m. to 3 p.m. Bring 1995 tax information and 1994 tax return.

Student Ambassador applications are available in the Admissions Office, McClain Hall 205. Deadline is March 1. The Scholastic Enhancement Experience seeks four students to serve as Student Program Coordinators for the Scholastic Enhancement Experience, June 26 - July 26. Job description and applications are available in the Multicultural Affairs Center, Adair Building. Deadline is 5 p.m., March 15. Applications for the Student Organization Service Awards are available at the Center for Service-Learning, McKinney Center. All groups are eligible and invited to participate. Deadline is March 29. For more information, call 785-4353. Voter registration will take place through February, SUB second floor, Mon. - Fri., 9:30 a.m. - 4:30 p.m. City Council elections are April 2. Applications for Omicron Delta Kappa leadership honorary fraternity are available in the CAOC office, Dean of Student Affairs office or the President's office. Must be a junior by the end of spring '96 semester. Applications are due at 5 p.m., Feb. 23 in the CAOC office.

The Women's Resource Center is looking for students, faculty and community members to submit their work to the Women's History Month Art, Poetry and Music Reception. If you would like to submit or perform, call the Women's Resource Center at 785-7224 or Sarah Taylor at 627-1370. The Faculty Development Committee sponsors the Wednesday Lunch Series on Teaching Approaches every Wednesday from 12:30 - 1:30 p.m. in the SUB Spanish Room. This week's topic is: Building students' skills in self-assessment.

Campus Christian Fellowship offers morning service at 11 a.m. in Kirk Gym on Sundays. They also sponsor a fellowship on Wednesdays at 7 p.m. at Greenwood Elementary School.