

# NEMOSCOPE

the Northeast Missouri State University alumni magazine

Spring 1982  
Volume 35,  
Number 3



## Free fall

NMSU hosts  
NCAA National  
Swimming  
and Diving  
Championships,  
see pages 8,9

## Inside

Elementary teachers using  
aviation principles to inspire  
learning . . . . . pages 4, 5

Midwest skiers can now hit the  
slopes at a new resort in  
Kirksville . . . . . page 10

Named scholarships estab-  
lished through contributions to  
development fund . . . page 31

## LETTERS

## It's never too late for Thanksgiving

**Editor's note:** Noemy Gomez Jibben started at NMSU in 1945 as one of the first students to leave her home country, in her case Costa Rica, to attend college in Kirksville. Last fall she wrote a letter recalling those days at the teachers college and sent it to the Index. They thought its subject matter would probably be more interesting to alumni, and eventually relayed the letter on to us. So, although we have had to edit the letter somewhat for space considerations, we think it tells an interesting story about the bond between college friends—and from a very unique perspective.

In 1945, I came to Kirksville as a student with the help of Dr. Walter H. Ryle and the International Institute of Education. When I left home, my parents and teachers had told me that I would be an ambassador from my country.

When I arrived in Kirksville, Dr. Ryle told me and the other foreign students his view on the subject of foreign students at the Northeast Missouri State Teacher's College, as it was known then. He told us he believed firmly that if the people of the world would have an opportunity to meet one another and see each other as human beings, face-to-face, then they would eventually end all wars. And the causes of wars, mistrust and fear, would eventually disappear.

My arrival was during World War II. The long list of the names of the town's young men who had died so far in the war were displayed on the square. Stars were displayed in the windows of homes telling of the sons, or husband, from that home serving in the war. Later, the veterans started to arrive—filling the campus with uniforms. Still later, the crippled and injured came.

We, the foreign students, became acquainted with the other students from surrounding areas and from other states. Soon, more foreign students began to arrive. We formed a Cosmopolitan Club with a member-

ship consisting of as many American students as there were foreign students.

We partied together, studied hard and learned English well, made floats for the Homecoming parade, and went to civic clubs in the area to talk about our countries. We never took seriously that, through the vision of Dr. Ryle, we were there to make the world a safer and friendlier place to live—a closer community.

Sometimes we would meet President Ryle on campus and he would surprise us as we talked in our own languages. "You are supposed to be talking in English," he would say. Meanwhile he had his son enrolled in Spanish.

This year, after 36 years of corresponding mostly at Christmas with some of the European women I met while in Kirksville, I made a trip to see five of them. First I went to Norway and met Rouuag Halstensen and she showed me Oslo and her hometown of Molde.

We walked to the hall where the Nobel Prize is awarded and I started to see the miracle this man from Missouri had brought about. Here I was in Norway! Never while growing up in sunny Costa Rica did I dream that I would be going to Norway someday, least of all to see a friend.

In the evenings, after seeing all I could of Norway, we would write down what we had seen and talk about Kirksville—Dr. Ryle, Miss Wade and Miss Slemmons.

In Sweden, Hellen Rydilius was waiting for me at the airport. We walked the streets of Stockholm, broke bread together that her son bakes every day, and opened the Echo to remember our days in Kirksville. We renewed our friendship which had laid dormant all those years.

In Denmark, I visited my two friends Grethe Holm Gale and Millie Hansen Lund. As we toured and visited, I once again realized that Dr. Ryle was right. I would never want wars between the countries I visited and mine. Those countries hold such dear people with whom I worked and

laughed so many years ago, and who are still my friends.

Finally, I visited Spain and Elena Lanzani Quindan, who lives right in the middle of Madrid. She is a tremendous hostess, which other foreign students from Europe have discovered as she has welcomed several of them to her country. Actually, there is a sort of alumni association away from Kirksville which meets from time to time in Europe.

So now, at Thanksgiving time, when memories of the Kirksville of 36 years ago come to mind, I feel the need to tell this story of a world that has become a much smaller and friendlier place. Thanks to President Walter H. Ryle who had the vision to bring us together at Northeast Missouri State University.

Noemy Gomez Jibben ('48, MA '50)  
Box 112, Rt. 4  
Dexter, Mo. 63841

## original photo



**MORE NAMES AND FACES**—Warren Dennis ('57), chairman of the Music Department at McClintock High School in Tempe, Ariz., has added a few names to the list we ran last issue by Basil D. Hunt. Dennis describes the scene as a drum battle between Hank Poth (number 13) and a man named Pat from Macon (number 13B). The list so far of bystanders, with Dennis's additions in bold, is as follows: 1—J. C. Shelton ('56), 2—Mary Ann Caldwell Schmidt ('57), 3—Nancy Morris ('57), **4—Leo Goeke ('57)**, 5—Marvin Russell ('59), **6—Mel Eliades ('62)**, 7—John Mills ('58) according to Hunt, 8—Marion Strohman ('56), **9—John Mills ('58)** according to Dennis, 10—Erv Neff ('58), **11—Charles Noel**, 12—Norma Wilson Holzmeier ('57), 13—Hank Poth ('59), 14—Richard Wall ('57), 15—Engin Uralman ('58), 16—John Bragg ('58), 17—James Hedges ('60), 18—Mary Lou Bills ('56), 19—Charlotte Ganselman Brown ('57), **20—Velvadeen Adkins Wall ('56)**, **21—Donna Phillips.**

## NEMOSCOPE staff

**President:** Charles J. McClain

**Editor in Chief:** Thomas R. Shrout, Jr.

**Associate Editor:** Les M. Dunseith

**Editorial:** Joni Spencer, William H. Cable, Helen Bailey, Margaret Easley, Cheryl Hash, Martha Daniels

**Production:** Bill Wehrman, Diane M. Davis, Celeste Gibeault, Aimee Thompson, Nathan Hupp, Louis Claps

**Photography:** Ray Jagger

The NEMOSCOPE is published quarterly by the Alumni Office of Northeast Missouri State University, Kirksville, MO 63501. Telephone 816-785-4125.

Letters may be addressed to:  
Thomas R. Shrout, Jr.  
Director of External Affairs  
30 McKinney Center  
Northeast Missouri State University  
Kirksville, MO 63501

ALUMNI  
ASSOCIATION  
**NMSU**



**Thomas R. ShROUT, Jr.**  
Director of External Relations

# All you have to do is ask; Alumni Directory on the way

Many of you through the years have asked why we have not published an Alumni Directory. This year we are honoring your request. For it to be successful, we need your help.

We have contracted with College and University Press, which has many years' experience in doing directories. They will be handling all the mail and follow-up phone calls for your Alumni Association.

In this way, the sale of the directory will cover the cost of production and the University will receive a number of address updates and other information in the process without having to make a major financial investment.

I encourage your support and participation in this project. Return the information card promptly, even in the event you do not wish to purchase a directory. You will help make the directory complete and thus contribute to a source of enjoyment and information for more than 25,000 graduates.

### Shorter mailing lists

This issue of the NEMOSCOPE is going to members and contributors only. I hope you will encourage other alumni to get involved with the University. We need their help. We are proud to serve you and proud of the NEMOSCOPE.

In January the NEMOSCOPE received a Merit Award from the Council for the Advancement and Support of Education in the 10-state Midwest region. Only three alumni newspapers were recognized in the competition involving 192 colleges and universities.

### Bigger mailing costs

From time to time you have asked us about our mail service. Most every item you receive is sent by third class, bulk-mail, the price of which has increased from 3.5 cents to 5.9 cents in the past several months. We usually allow a month for delivery. Sometimes, however, that doesn't ap-

pear to be enough time. We will attempt to move our mailing dates ahead.

By the way, it costs about \$1,400 in postage alone to send an item to each alumnus.

### Better mail

Thanks for the notes of encouragement and support many of you have sent through the last year. It makes our job easier.

*by Thomas R. ShROUT, Jr.*

## AROUND THE QUAD



### LITTEST GRADUATE

Perhaps you saw this picture in your newspaper last summer. Debbie Johnson (M.A.'81) and daughter Reagan received instant notoriety of sorts when the picture ran nationwide on the United Press International wire. The same picture, by staff photojournalist Ray Jagger, also won a Midwest award and is the subject of a new graduate school poster.

### DO RE ME

Begin warming up those vocal cords if you were once a member of the NEMO Singers. The group is planning a reunion May 1 which will feature a recital, dance and other activities. The reunion is being held in conjunction with the NEMOs annual spring concert May 2. Interested alumni may contact Clay Dawson, director.

### DANCING DOLLARS

The Student Senate improved the financial condition of its emergency loan fund with a benefit party at a local discoteque. The senate raised \$375 which will be lent to students on a short-term, emergency basis.



### NOW YOU SEE IT . . .

The Joseph Baldwin Statue was under wraps last month in an environmental awareness art project initiated by art students Crystal Dietiker and Karyl Lang.

The purpose of the project was to sensitize people to their surroundings so they will look at them in a different way. The statue did get responses from people trying to be helpful who disrobed the statue, unaware that the project had been approved by University officials.

### FAIR FOR THE FAIR SEX

The 2nd Annual Women's Fair was held on the NMSU campus to promote awareness of women's talents and contributions on a local and international level. Demonstrations, exhibits, films and panel discussions were featured.

### CONTEST TIME AGAIN

Students from 70 Missouri and Iowa high schools received a close view of the NMSU campus, programs and people at the annual Academic Festival held March 23.

Around 3,560 students competed in the standard areas of study in addition to two new areas, criminal justice and computer programming.

### POPULAR PLACE

NMSU is in demand by high school students. Applications are running 40 percent ahead of last year. This fall, for the first time in more than a decade, all of the campus living space will be used for residence hall rooms when the Career Planning and Placements Office moves from Blanton Hall. The Admissions Office is denying more students because of academic reasons, too, but the possibility looms that late applicants might be denied on the basis of space rather than academic ability.

### OFFICES TO MOVE

Architects are busy at NMSU again—this time they're drawing up plans for the relocation this summer

of Alumni, Public Relations, Publications, Sports Information and Photography offices from McKinney Center to the Administration/Humanities Building. The Switchboard and Campus Mailroom will remain in McKinney Center.



### COMMENCEMENT SPEAKER

Spring graduates will hear Ray Bentele ('60) at commencement exercises on May 10. Bentele is president of Mallinckrodt, Inc., of St. Louis. Mallinckrodt recently was purchased by Avon, Inc.

Born in Macon, the 45-year-old Bentele graduated from Macon High School before majoring in accounting at NMSU. Bentele's wife, Mary Edith Cox Bentele, also graduated from NMSU in 1960 with a B.S.E. in business education.



**FLYING FRIENDLY SKIES—**  
**(above)** Co-pilot Erica Burton—  
Larry "Captain Jack" Newman, get  
clearance from the control tower for  
takeoff. The classroom flight simulation  
was a project first-grade teacher Joyce  
Rollins learned in an NMSU summer  
course, Air and Space Science for  
Elementary Teachers. **(right)** The pilot  
keeps his eyes on the controls while his co-  
pilot rings for the flight attendant to serve  
refreshments of peanut butter, crackers  
and Tang. **(far right)** Flight attendant  
Jeremy Johnson serves the mid-flight  
snack to passengers Rachel Hurley,  
Rollins and Troy Pinkerton. The  
students took turns playing the different  
work roles involved in the flight simula-  
tion.



# Aviation takes off in grade school

"My name is Jack and it's hot in Kansas City—I mean California," the young pilot said to his passengers.

"We're ready for take off now . . . and we're up. You can unbuckle your seatbelts now."

The passengers start to undo their "seatbelts"—strings of yarn tied to chairs. Not your typical seatbelts, but then it's not your typical flight. Captain Jack is piloting a flight of fantasy, and his passengers and crew are fellow first graders at the Greenwood Elementary School in Kirksville.

The simulated flight from Missouri to California was a class project directly inspired by a course their teacher, Joyce Rollins, took at NMSU in the summer of 1980. The course, Air and Space Science for Elementary Teachers, (ASSET), shows teachers how to use the principles of aviation to motivate learning in all academic areas.

"It makes the classroom more interesting. There are so many possibilities—science experiments, career education and art projects to name a few," Rollins, a 1941 NMSU graduate, said. She has been teaching at Greenwood for 19 years and said the course helped put some spice into her lesson plans.

"It seems when grade school students start thinking about flying their eyes sparkle," Jack Magruder, professor of science, said. Magruder, who taught the course at its inception four years ago and will be teaching it again this summer, said ASSET usually "sparks renewed interest among teachers because it is a new approach. When teachers get excited, it works. And when the kids get excited about something, teachers like their jobs more; it's a snowball effect. The students like it because it is action, a hands-on activity, besides just sitting and listening."

"It is a unique program," Dean Rosebery, director of ASSET and head of the Science Division, said. Teachers are accepted into the course by application

only, and their room and board and tuition costs are paid for. The course blends 18 inner-city and six rural northeast Missouri teachers together so they can learn from each other as well as from the course.

"The mix was something we'd never done, but it was such a success we've been continuing," Rosebery said. The first two years of the program, teachers from Kansas City were allowed to participate and KC industry provided a good deal of the funding. In 1981 and this summer, St. Louis teachers will take part.

Whether from urban or rural areas, teachers find that an interest in aviation is something most grade schoolers have in common. That is why aviation-inspired projects, such as the flight simulation at Greenwood, seem to work in teaching a variety of subjects.

Not only did the first graders learn what to expect on a real commercial flight, they also learned geography by mapping out the flight plan, and art by making their own headsets and paper hats for the crew. In addition, the first graders learned through role playing that pilots, co-pilots, and flight attendants (not stewardesses) could be male or female and are dependent on other less visible airline employees, such as mechanics and air traffic controllers.

In a related project, students listened to directions from an air traffic control tower (a tape recorder) and decided how to pilot their own plane out of an airport drawn on poster board.

Mathematics, English and science are other subject areas into which aviation can be incorporated. "About half our time (in the summer course) is spent in the science lab going through experiments the teachers can use in their own classrooms to teach students concepts in weather, space science, temperature and physics, forces, motion, mass and pressure," Magruder said.

In addition to lectures and lab time, the four week course also consists of speakers from the aviation industry, films and field trips to air and space centers in Cape Kennedy, San Antonio, Texas and Washington, D.C., to name a few. Unlike most university courses, the funding for ASSET comes from three sources—private industry, the University and the Federal Aviation Administration.

In fact, it was the FAA which asked NMSU to develop the program. The Missouri Department of Education recommended the NMSU Science Division because of its reputation for improving instruction at the elementary and secondary levels. "The aviation awareness approach goes well with the ecological view of all things being connected—in effect, aviation is related to everything we do," Magruder said.

Kansas City area teachers are actively trying to raise money from private sources so they can participate again this summer. A Kansas City Times editorial supported the program, which has stirred up much enthusiasm among KC teachers. An earlier article in the Kansas City Star quoted Jimmie Marie Thomas, assistant superintendent for elementary instruction in KC, as saying ASSET is "one of the most exciting in-service training programs that I have seen in 39 years in the Kansas City School District."

Magruder said, "We're getting people enthusiastic. It (aviation awareness) is just a subtle approach to do what we want to do anyway—teach."

And teaching might as well be done in a manner that allows young minds to soar and expand, like the first graders who flew to California and back in one afternoon.

"Next week we're going into space," Mrs. Rollins said. "Want to come along?"

*by Joni Spencer*



## Greek life

### Fall GPAs decline

After showing some progress for the last couple of years, fraternity and sorority grade point averages took a turn for the worse last semester.

The all-fraternity average for fall '81 was 2.49, compared to an all-men's average of 2.61 and last fall's fraternity GPA of 2.58.

The all-sorority GPA for fall '81 was 2.68. This compares to an all-women's average of 2.81 and last year's sorority GPA of 2.81. An overall decline in student GPAs at NMSU seems to show up most in the GPAs of campus Greeks.

Some bright spots remained on the GPA outlook, however. Sigma Tau Gamma raised its fraternity grade point to 2.79 to capture the President's Cup for best fraternity GPA. Sigma Phi Epsilon won the best pledge class academic award. For sororities, Delta Zeta won the best sorority GPA with 3.01 and was the President's Cup recipient. Sigma Sigma Sigma had the best pledge class grade point.

### Casino Night dropped from Greek Week activities

A lot of tradition and a little bit of innovation highlighted Greek Week '82 activities.

An innovation this year was "Olympus '82," a carnival on the Student Union Mall Friday night. The carnival featured games and booths set up by various organizations, similar to the booths associated with state fair midways. Katie Olsen, junior and Panhellenic president, said. This activity replaced Casino Night, which had been losing money in recent years (almost \$300 last year).

### Career program held

The first O. Glen Hocker Career Program was held on campus Jan. 29, sponsored by the Goetze Educational Foundation of Sigma Tau Gamma.

Among those attending were several Sig Tau alumni, many of whom presented lectures concerning job opportunities or preparing for employment. Featured speaker was Dr. Weldon Shofstall ('26), dean of students emeritus at Arizona State University.

### Spring rush shows continued upswing

For some reason, the political climate seems to have a more drastic effect on the pledging of Greek organizations than the economic climate does. One might think that fewer students would be pledging now that money is tighter, but such is not the case. As in the past conservative political times, Greek membership is on the rise, and NMSU is no exception.

After a large fall rush, spring rush this year also showed an increase. Fraternity pledges totaled 101 this spring, up 20 men from just two years ago. And Sigma Kappa took 13 pledges this spring to join Delta Zeta and Sigma Sigma Sigma as the third sorority to take quota this year.

Delta Chi had the most spring pledges with 16, followed by Phi Kappa Theta and Tau Kappa Epsilon with 13 each. Sigma Tau Gamma pledged 12 men; Pi Kappa Phi and Sigma Phi Epsilon 11; Phi Lambda Chi 9; Alpha Gamma Rho, Alpha Kappa Lambda and Phi Sigma Epsilon 5; and Alpha Tau Omega 1.

Because DZ and SSS had taken quota in the fall, only three sororities were eligible for spring rush. Sig Kap's 13 was high, followed by Alpha Sigma Alpha and Alpha Sigma Tau both with seven women pledged.



*A CAPITOL IDEA—Students from NMSU this spring joined those from Southeast Missouri State University, Central Missouri State University and Northwest Missouri State University for a day of talking with state legislators in Jefferson*

*City about the needs of higher education. The day was organized by the Student Coalition, a group of student government representatives from the four campuses. NMSU's Carl Mueller, a senior from Moberly, Mo., is the president.*

## Finding jobs can be hard work, but NMSU grads still doing well

Although news broadcasts report rising unemployment in the nation, job-hunters from Northeast are not deterred in their efforts. About 90 percent of last year's graduates reported reaching their goal of securing a first career position.

"Candidates were more knowledgeable, more active, more mobile," Kathleen Strickler, director of Career Planning and Placements, said. "They've really gone out and gone for these jobs." Of the 1,367 employable graduate and alumni candidates available in 1981, 1,248 were placed in jobs by the period ending Aug. 31, a recent CP&P activities report indicated. The 1980 placement was five percent lower, or 85 percent.

Education was again the field to enter, as Strickler reported a shortage of candidates in the majority of teaching fields. In her report to President Charles McClain, she stated that, indicative of a national trend, NMSU's first-year teacher production dropped about 10 percent from that of 1980. Placement for these graduates rose about two percent in 1981 to 95 percent.

These teaching opportunities led to an average starting salary of \$11,330 for undergraduates, with graduate students in education averaging \$15,378. The high and low average reported salaries were commanded by the education field also, with the bachelor of science in education graduates in Spanish receiving \$8,000 and those graduating with an education specialist degree making an average of \$24,242.

Comparably, graduating students with a bachelor of science degree averaged a salary of \$12,470, ranging from \$8,475 for those placed in child development to \$16,500 for physics. Graduates with a bachelor of arts degree averaged a reported salary of \$10,411, while those with a bachelor of science in nursing averaged a salary of \$14,536.

*Candidates are more knowledgeable, more active, more mobile.*

*They've really gone out and gone*

*for these jobs. —Kathleen Strickler, placements director*

Strickler said that salary may not be the only factor in getting a job—considering the economy. It may be whether jobs are available at all. "There are jobs in teaching," she said. "It's not glutted like business, industry and government."

Despite the competition for these non-teaching positions, however, there was an 11 percent increase this year in placement of these candidates, from 75 to 86 percent. More on-campus interviews were available to 1981 candidates, while the annual Career Fair attracted a record-breaking 50 companies and 1,400 participating students.

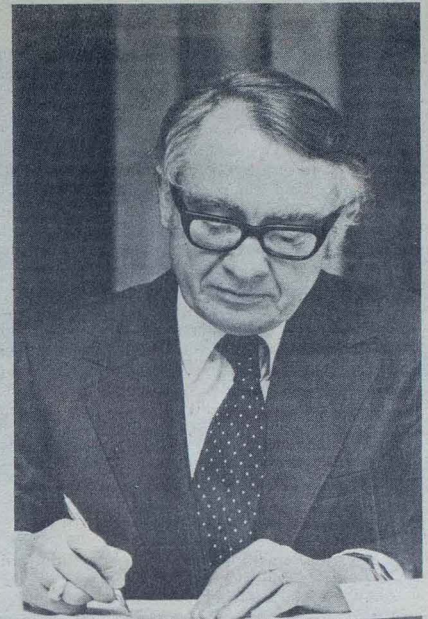
This year the business, industry and government interviewers have decreased on-campus recruiting efforts due to increased travel costs, Strickler said. To counter this, more employers are contacting the Career Planning and Placement Center to list job opportunities for candidates.

So, although unemployment has become the nation's top concern this year, NMSU seniors are working hard to avoid becoming a statistic in an unemployment report. They'd much rather be included in Strickler's report for next year—among those graduates placed in their first post-college job.

## 'President McClain cordially invites you to breakfast'

### Morning meetings open lines of communication

**PRESIDENTIAL PARLAY**—One of Dr. Charles J. McClain's favorite ways of keeping in touch with the concerns of students is through informal breakfasts held during the academic year. After everyone is introduced, the president asks for suggestions regarding campus improvement and takes notes for follow-up later. Often, the president's guests are also presidents—of campus organizations. Below, senior Kelly Drury (Rhythmettes president), senior Peggy Schoen (Student Senate vice president), junior Tracy Schroeder (Sigma Tau Gamma fraternity president) and senior David Clithero (Senate president) chat about campus issues. Drury said the breakfast was very worthwhile because "it gets a lot of feedback from people who are really involved."



## NEMOSCOPE wins CASE Merit Award

NMSU staff members received high marks at the regional Council for the Advancement and Support of Education competition held recently in Kansas City. Nine awards for excellence in University advancement were accepted at the convention by Thomas R. Shroust Jr., director of external relations.

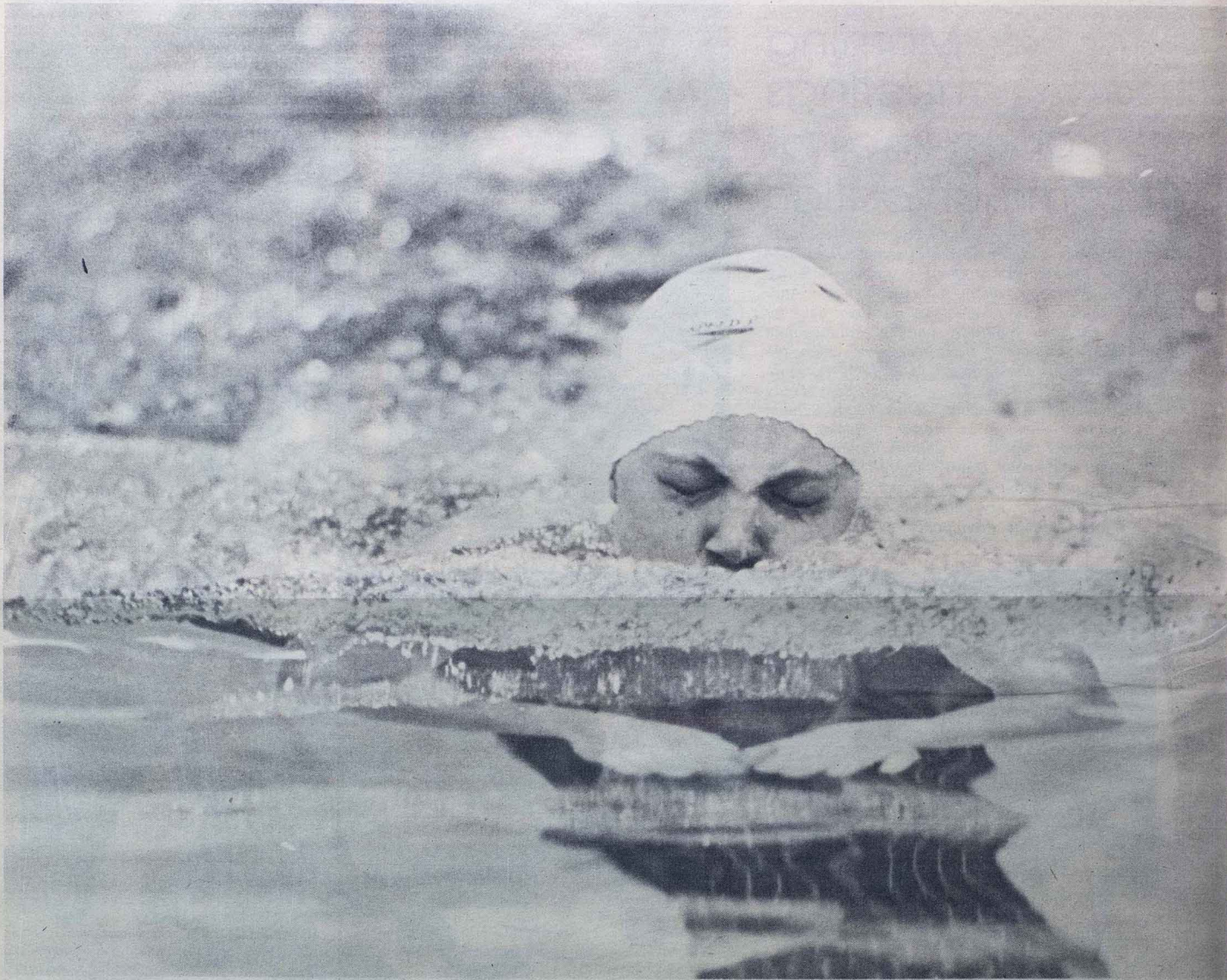
"Competition was pretty tough" in the publications and design categories, particularly, said Joseph Brisben of the University of Iowa, a CASE competition coordinator.

Entries receiving recognition were the Purple Pride admissions newsletter (Exceptional Achievement Award), the Viewbook (Merit Award), the NEMOSCOPE (Merit Award), 1980 Christmas TV commercials (Award of Excellence), three photographs (Merit and Award of Excellence), the "Northeast Today" (Merit Award) and a convention folder (Award of Excellence). The Exceptional Achievement Award is the top award presented, followed by the Award of Excellence, then the Merit Award. In some categories, not all the award classifications were presented.

Staff members named on the awards were Shroust, Bill Wehrman, associate design director; Ray Jagger, photojournalist; Diane Davis, graphics assistant; artist Gerald Walker; and P.R. staff assistants Joni Spencer and Les Dunseith.

A third-place Sweepstakes Award was also presented to NMSU for overall excellence. NMSU tied for the award with the University of Oklahoma and the University of Missouri-Columbia, with Iowa State University taking first place and the University of Kansas coming in second.

# NMSU hosts NCAA



If you heard that college women from across the country were packing little more than their swimsuits and heading for one place in early March, you probably wouldn't expect them to be going to Kirksville. But these women weren't planning on catching a spring break suntan—they were participants in the first NCAA Division II Women's Swimming and Diving Championships held at the NMSU Natatorium March 11-13.

Many of the competitors traveled quite a distance to get to the meet; in fact several California schools were involved (including the national championship team from the University of California at Northridge.) Other teams came from Tennessee, Michigan, Florida and several other states.

Yet, happily, not all the competitors had such long trips. NMSU juniors Sue Hanisch and Kathy Fasching qualified for the national meet, earning the chance to swim in familiar waters. Although neither woman won any major awards, they distinguished

themselves as the only two NMSU women swimmers ever to qualify for national competition.

An added highlight for the two NMSU swimmers, and the whole University, was coverage of the final night of competition by the Entertainment and Sports Programming Network. Mark Mullin, NMSU swim coach and meet director, was happy that ESPN decided to cover the event.

"I'm very glad to have the national coverage. It was an exceptional experience for me, and it was very good for the school and our swimming program. It puts our program on the map."

So, although most of the swimmers were far from home, their friends and families had the opportunity to see them compete on the tape-delayed broadcasts supplied by the 24-hour sports network.

Not all the families stayed home, however. For example, Ruth and Miles Parks flew into Burlington, Iowa, from their home in Grand Rapids, Mich., and then drove down to Kirksville. Their daughter, Jackie, competed in six events for Oakland Universi-

ty at Oakland, Mich., which took third place in the meet.

Mr. and Mrs. Parks enjoyed their stay in Kirksville. "The campus and facilities here are beautiful. We've been going to swim meets for nine years, and these are the best facilities we've ever seen."

In addition to the families of the competitors, many NMSU students jammed into the Natatorium to watch the competition. The stands were packed with spectators who got an opportunity to witness a first for Kirksville and a first for the NCAA.

Prior to this year, the National Collegiate Athletic Association did not include women's sports. Many of the competing schools used to belong to the Association of Intercollegiate Athletics for Women, which is still intact and held its own championship meet. But, as one swimmer put it, "The NCAA is the big time."

And, with its handling of this championship meet, NMSU proved it is the "big time" too!



**THE SWIM OF THINGS**—Two NMSU juniors, Sue Hanisch (**far left**) and Kathy Fasching, were able to compete in their home pool during the NCAA swimming championships held in the NMSU Natatorium. The national swimming and diving meet brought coaches and competitors to Kirksville from across the country. Sue Peterson, coach at the U.S. Merchant Marine Academy and chairperson of the NCAA women's swimming committee, came all the way from Kings Point, N.Y., to cheer on the swimmers (**above left**). Also traveling a long distance was the team from California State University-Northridge, which finished first in the meet and had several team members interviewed by the people from ESPN, which televised the meet nationally.





## Ski Kirksville!

Ski enthusiasts in the Midwest used to take off for Colorado to enjoy a few days on the slopes. Now a day of skiing is only a short drive away at the Rainbow Basin Ski Area just outside Kirksville.

Skiers came from as far as Ohio and Oklahoma City to try out the new ski area this winter, even though it was open less than three weeks before warm temperatures set in. Jeff Turner, one of the owners, said. Rainbow Basin opened its doors Feb. 2 while it was still undergoing some construction, basically to get recognition for next year, he said.

Despite limited advertising, the owners think they achieved that recognition through word of mouth, Turner said. "At least half of our skiers came from places outside of Kirksville such as Columbia, Kansas City and St. Louis. On good days we had about 600 to 1,000 people, even though we only had half the area opened up."

Turner said the ski area operated two runs this winter but will have four or five runs when it reopens in November or early December. The owners expect to have a double T-bar lift in operation, in addition to handle tow lifts.

Rainbow Basin Ski Area was conceived and developed by Turner, Michael Marrs and Richard Marrs and includes 240 acres of land just southwest of Kirksville. The actual skiing area covers 20-25 acres, but the three owners have plans for expansion that include cabins for overnight lodging, "to make it a small ski community," Turner said.

They also plan to build up a larger hill sometime in the future so NMSU can have a racing team to compete on the collegiate level, Mike Marrs said. Presently, the runs range in length

from 750 to 1500 feet, and range in difficulty from slightly-advanced beginner to expert. And for those who are not yet "slightly advanced," lessons are available at all times from a professional staff.

It costs \$12 a day to ski at Rainbow Basin, including rental of skis, poles and boots. If a skier owns equipment, the cost is only \$6 to cover the use of the lifts.

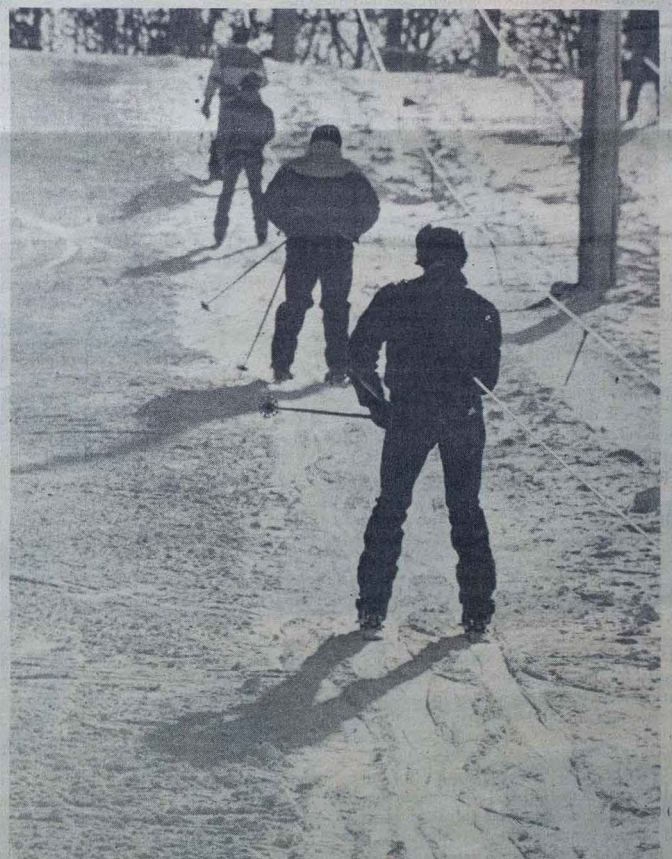
Those people who want to beat the crowds can ski under the stars; the slopes are lighted for midnight to 6 a.m. runs. But, for those who prefer to congregate, the resort features a cedar chalet lodge with a cafeteria-style restaurant, video games, pro shop, first-aid room and, of course, fireplaces.

The owners will even provide the snow when the temperamental Kirksville weather refuses to cooperate. If temperatures get to freezing, all they need is water for their artificial snow-making machines to work. The same holds true for the ice skating rink at Rainbow Basin.

In the off season, the owners plan to acquaint people with the lodge by renting it to organizations and holding barbecues on weekends, starting around Memorial Day. Future off-season plans include an Alpine Slide and the introduction of grass skiing to the area.

In the meantime, the offices of Rainbow Basin will remain open and work will continue in the coming months to prepare for the next ski season.

*by Joni Spencer*



**SNOW BUSINESS**—When the Rainbow Basin Ski Area opened, it became the only active ski resort in Missouri. The owners hope to do a brisk business with NMSU students but also expect skiers to come from all over the state to try out the Kirksville

slopes. When it's time for a break from the hills, patrons can relax in the chalet-type lodge. And for every skier, whether expert or beginner, there is always one common experience—getting back to the top of the hill.

# Remembering Miss Wade. . .

## Cardinal Key hosts memorial

by Elaine Kausch, Cardinal Key president 1981-82

My name is Elaine Kausch, and I'm president of Cardinal Key this year. This afternoon I would like to speak about the legacy Miss Nan Wade left our University. It is supported by the testimony of many students down through the years whose lives she touched and the indelible impressions she made. Miss Wade's students remember her and speak of her in glowing terms and with high regard.

Dr. Wade founded our Cardinal Key chapter here at Northeast in 1934 and was the sponsor for 23 years. She exemplified the four Cardinal Key virtues: faith, trust, fortitude and wisdom. She also demonstrated that these services were to be observed faithfully, the services genuine and that they were to make life complete.

Miss Wade demonstrated the virtue of faith through her relationship with people. She put faith in human nature and her fellow man. She had faith in young people, and she was loyal. Miss Wade had comradeship with her students and yet enjoyed their deep respect. She was self-confident, secure and not pugnacious. Miss Wade was the perfect lady—a role model for all women who aspired to the highest standards.

Dr. Wade epitomized the virtue of trust. Confidence and reliance were placed in her by both colleagues and students alike. She was known to be firm, but fair. Dr. Wade trusted her students, and to cheat in class was a personal affront.

Perhaps fortitude is the Cardinal Key virtue Miss Wade was most renowned for. As I stated earlier, she was the perfect lady; she was demure and not aggressive, yet stood up for her convictions. She had the grit and backbone necessary to go into a packed class, pass around the trash can, and tell the students to spit out their gum because she did not want to compete with it. Dr. Wade was very respected and dedicated to teaching and to her own aspirations. When students asked what title they should call her, she replied, "Miss" Nan Wade; however, she also reminded them that there was nothing in life she had missed.

Miss Wade also exemplified the final Cardinal Key virtue, wisdom. She, as Browning states, "Saw life clearly and saw life whole." Dr. Wade had a brilliant mind and marvelous memory. She was well grounded in her subject and used the subject matter effectively to teach. Miss Wade emanated a certain air and grace that inspired students to seek the high standards she demanded, to see life as a challenge and to strive for perfection rather than simply settling for mediocrity. Miss Wade was wise in her evaluation of people. She was able to accept the human element but also felt she could improve people. She showed no inconsistencies or partiality. She commanded respect and encouraged all not to stand still, but rather to get up and go—to be a go-getter.

The purpose of Cardinal Key is to inspire leadership and utilize that leadership through active service. Dr. Wade loved to teach, and she was outstanding in her profession. She laid the framework and provided the stimulus for her students to seek knowledge on their own. She developed in her students an understanding and appreciation of literature to the extent that lasting impressions were made. One former student of hers recently told me that, because of Miss Wade, he still reads one classic each year.

In addition to being an outstanding teacher, Miss Wade served as a role model for what a teacher should be—both in and out of class. She was a pillar in the college community. She was very sophisticated in her thinking, yet human.

As I was looking through her file, I came across one letter from a student of hers which refers to Dr. Wade as giving the "most brilliant performance in class teaching." Another letter writer reminisced, "And remember Dr. Wade, oh how I loved her."

by Ruth W. Towne, professor of history

For those who were privileged to know Dr. Nan E. Wade, the absurdity of attempting to pay tribute to her in five minutes is all too apparent. For those who were not so fortunate, no amount of words would suffice to convey her magnificent qualities.

She taught French, Spanish and English literature on this campus for 27 years, but it was the world literature course which she created in 1934 as a part of what was then a pioneer effort in general education that left an indelible mark on thousands of students—including me. The great masterpieces of the world's literature were organized around character traits such as love, courage, freedom, tolerance, justice, friendship and self-sacrifice. The conception was unique, but it was Miss Wade's charm, wit and zest for life that constituted the extra element which made the course unforgettable. In addition to making the literary selections become a vital part of the student's experience, she personally exemplified the noble attributes portrayed in the course.

Her favorite poet was Robert Browning, "who saw life clearly and saw it whole," as she said many times. From him she found rules to guide her own life. "Ah, but a man's reach should exceed his grasp, or what's a heaven for?" from Andrea del Sarto; "All service ranks the same with God," from Pippa Passes; and "Trust God, see all, nor be afraid," from Rabbi Ben Ezra.

Nan Wade was faithful to these maxims—she saw life clearly and saw it whole. She trusted God and did not fear what might come. And she rendered service in a multitude of ways. She loved students and was able after years had passed to recall a student, correctly connecting name, face and specific incidents that had occurred in her classes. She loved teaching. On a variety of occasions she used the phrase, "I love my work," or "I am happy in my teaching." Hence we can use about her another of her favorite quotations: "He who does good, comes to the temple; He who loves, reaches the shrine."

She truly reached the shrine, and, in the love she shed, some of the rest of us have approached it also.

## Alumni recall her fondly

Just a line to let you know I appreciate your tribute to Miss Nan Wade in the latest issue of the NEMOSCOPE. Like you, I lament no one from Northeast attended her funeral. Of all the instructors of my entire college career, she rates at the top. So often have I wished I could have emulated her excellence.

Karl B. DeVault ('41)  
Spirit Lake, Iowa 51360

I am happy Cardinal Key and the University community had a memorial service for Miss Wade. She was an exceptional teacher, and she deserved the recognition.

Mary Balagna ('53)  
Davenport, Iowa 52804

It is certainly appropriate that a memorial service be held for Miss Wade, and I wish that I could attend. She was a gracious lady and a dynamic teacher and will long be remembered by those of us who had her for a teacher and were associated with her in Cardinal Key.

Mary S. Waggoner ('51)  
St. Louis, Mo. 63104

...Miss Wade was one of my favorite teachers at NMSU, and I remember her inspiring vivacity with great pleasure.

Martha E. Marsh ('39)  
LaPlata, Mo. 63549

I was so saddened to hear about the death of Miss Wade, but so happy to read about her again. This was truly a brilliant, fantastic woman. She was way ahead of her time. No one could spend a year in her world literature classes and not come out a much more educated human being. I never had a better teacher—before or since.

Judith A. Greeno ('56)  
El Centro, Calif. 92243

You did a great job on the Nan Wade article in the winter 1981 NEMOSCOPE.

I had forgotten about her comment of "Miss" and not having missed anything. You young folks there now missed a lot by not knowing both Nan Wade and Agnes Slemmons. They were quite a pair!

Helen Weissflug ('50)  
Ballwin, Mo. 63011

I guess I took every class that Nan Wade taught and ended up with a major in English as well as in art. We were charter members of Cardinal Key. Mary Ellen Stout Dodson was the first president, and I was the second president, 1934-35. That was a great group of girls.

Nan Wade was a marvelous teacher. I'll never forget her.

Margaret Hauck ('35)  
Union, Mo. 63084

## Tuition is going up, but we're still lowest

Although the cost of attending Northeast has taken another jump, NMSU is still the lowest among Missouri's regional colleges and universities. Fees for 1982-83 will be \$480 per year for an in-state student, up from \$390 this past year and \$340 the year before that.

Non-resident tuition is up to \$960 per year. Residence hall room and board also continues to climb, with the cost for the fall of 1982 being \$1,320 per year.

The pressure to increase fees comes from two sources—the University needs increased revenues to offset the dramatic downturn in state support experienced this current fiscal year. Current projections indicate that the state's financial bind will not improve during 1982-83.

The other pressures are of a philosophical nature coming from some legislative and executive branch officials who genuinely believe that students must bear a

greater share of the costs of attending a public university.

With the reduction in federal financial aid programs, public college and university presidents wonder aloud if the net result will be denying a higher education opportunity to students from lower and middle income families.

NMSU has taken steps in an attempt to offset this possibility. One major effort is the assistance that alumni have given the University over the last two years. Several new scholarships have been established to help deserving students. In addition, many existing scholarships have been improved because of gifts from graduates.

Alumni interested in establishing a named scholarship should contact the Alumni Office. A minimum donation of \$1,000 is needed in order to establish a named scholarship.

by Thomas R. Shout, Jr.

# 'We are preserving the integrity of the baccalaureate degree.'

—President McClain

**POP QUIZ:** In this time of economic uncertainty, budget cuts and financial aid depletion, what has been the major campus issue this year?

A. Faculty leaving en masse for jobs at other schools.

B. Enrollment projections for next fall dropping off the charts.

C. An administration, faculty and student effort to raise academic standards at NMSU.

D. There has been no campus issue—everyone went home for Christmas and never came back.

If you've seen an Index, talked to a student, listened to the local news or visited Kirksville in the past few months, you will know that the correct answer is C. In a time when one might expect everything to be going bad, the NMSU community has instead pulled together to make things better.

President Charles J. McClain describes the efforts to raise standards as a return to the basics of education that most colleges and universities drifted away from in the last 10-15 years. "We are preserving the integrity of the baccalaureate degree," he says.

**SOME VERY OBVIOUS** steps, as well as some more subtle changes, have been taken in recent months to recapture that integrity. Admissions standards have tightened to the point that a record number of students will probably be denied this year. Add/drop policies have changed to prevent students from "shopping" for easy courses.

Withdrawal deadlines have been moved up to prevent failing students from quitting school to avoid poor grades. Curriculum requirements have been tightened in an effort to keep students from substituting courses that might not be to their actual best interests. Also, other major curriculum changes in many academic divisions are in the works.

It is the subtle changes that may be having the most effect, however. The average GPA of NMSU students has been dropping steadily over the last few semesters, even though the quality of high school seniors entering the University has been steadily rising. The reason? Instructors are cracking down.

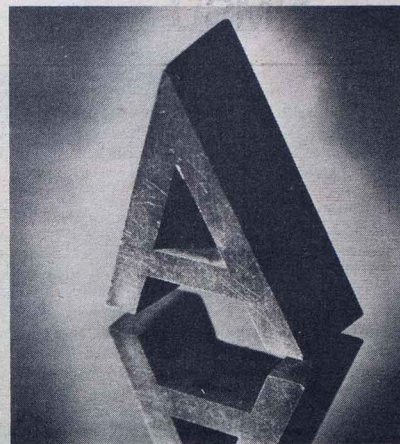
Dean of Students Terry Smith deals with a variety of students in his job, from the best to the worst, and he says many students have noticed a change in their courses. "The students, especially the upperclassmen, say the classes are getting tougher," he says. "But their attitude is favorable. They can see that it (the tougher standards) will make their degree more valuable."

Bryce Jones, assistant professor of business administration, summed up the problem in a recent Index interview. "You're not rewarding excellence if you're giving 25-30 percent 'A's' . . . it makes it more difficult for employers and graduate schools to pick out students who are really good, and therefore they are really being discriminated against—the really good students—because it's more difficult to pick them out from the rest of the crowd."

**WHILE THE TIMING** of the efforts to raise standards may be particularly ironic this year, the process has been underway for several years—in fact, since President McClain has been at Northeast. "It occurred to me about '71 or '72 that it was wrong for the (funding) formulas to be based solely on numbers. This approach encouraged enrollments at the expense, perhaps, of quality. This concern caused me to seek other means of funding," McClain says.

*You're not rewarding excellence if you're giving 25-30 percent A's. . . . it makes it more difficult for employers and graduate schools to pick out students who are really good.*

—Bryce Jones,  
assistant professor  
of business



He eventually developed the idea of "value-added funding," which would reward an institution of higher education for successfully performing its real function—educating students. Through the use of testing upon entrance to the University, after the sophomore year and again during the senior year, the University can now show that the student has indeed made progress at NMSU.

The testing of seniors began in 1974. After a few years of finding the right tests, getting enough results to be representative and setting the program into proper motion, it came time to evaluate the data. What the University administrators discovered was disconcerting.

Many students were losing the skills they had shown as high school seniors during their NMSU education. NMSU seniors with very high GPAs were sometimes unable to score above even the 50th percentile on national examinations. The levels of satisfaction expressed on graduating senior questionnaires and alumni surveys indicated strong disapproval with their NMSU education in some areas.

**APPARENTLY THE EMPHASIS** in higher education had shifted too much toward enrollment at the expense of quality. McClain soon realized that this trend toward lower standards was unrealistic. "The noble experiment to give everyone wanting the opportunity a college degree," as McClain describes it, was making too many universities lose sight of their real purpose—NMSU included.

Other factors, besides growing enrollment, had eroded the quality of a student's education. Substitution policies had become liberal to the point that a few students were graduating without really getting the education they should, Dean of Instruction Darrell Krueger says. "We have begun to swing the pendulum back toward giving more direction to students in their curriculum."

Krueger has been instrumental in much of the effort to raise standards. He has urged the faculty to implement more in-class reading and writing and is recommending comprehensive examinations for all courses. His office has also been responsible for many of the other major academic changes, such as

the stricter add/drop policy which went into effect this spring. Instead of almost an entire semester during which to drop a course, students must now drop no later than the week after mid-term. This new policy should prevent a student from dropping his worst grades near the end of the semester to inflate his GPA.

**NOW THAT THESE** types of steps are being taken to raise the performance of students on the senior tests, it remains to be seen whether the state will see the wisdom of funding for quality and not quantity. So far, enrollment is still the primary basis of state funding of the regional universities.

McClain is confident that NMSU's efforts will pay off soon. High school enrollments are down considerably, so that the pool of potential students will decrease sharply in the '80s.

When the projected declines in college enrollment come about in the next few years, NMSU will be ready. "It became clear to me that the institution that was going to be the leader when the numbers started to decline was the one swimming against the stream—leading the way by increasing standards," McClain says. "The institution that survives for the right reason is the one that says 'our students can stand up tall on any kind of national measurement.'"

McClain emphasizes, however, that this trend toward quality at NMSU is not new. Grade inflation nationwide, as well as other factors, such as the awarding of college credit for "life-time experiences," had devalued the quality of many college degrees.

Alumni of the past few years, for the most part, were receiving a worthwhile education from Northeast, McClain says. Yet, a trend the wrong way had begun. Current efforts are intended to reverse that trend—to ensure that a degree from NMSU is something worth striving for and attaining.

by Les Dunsieith

# Plan now for Homecoming 1982

## October 8, 9, 1982

### Class Reunions—

### 1932, 1942, 1957, 1972

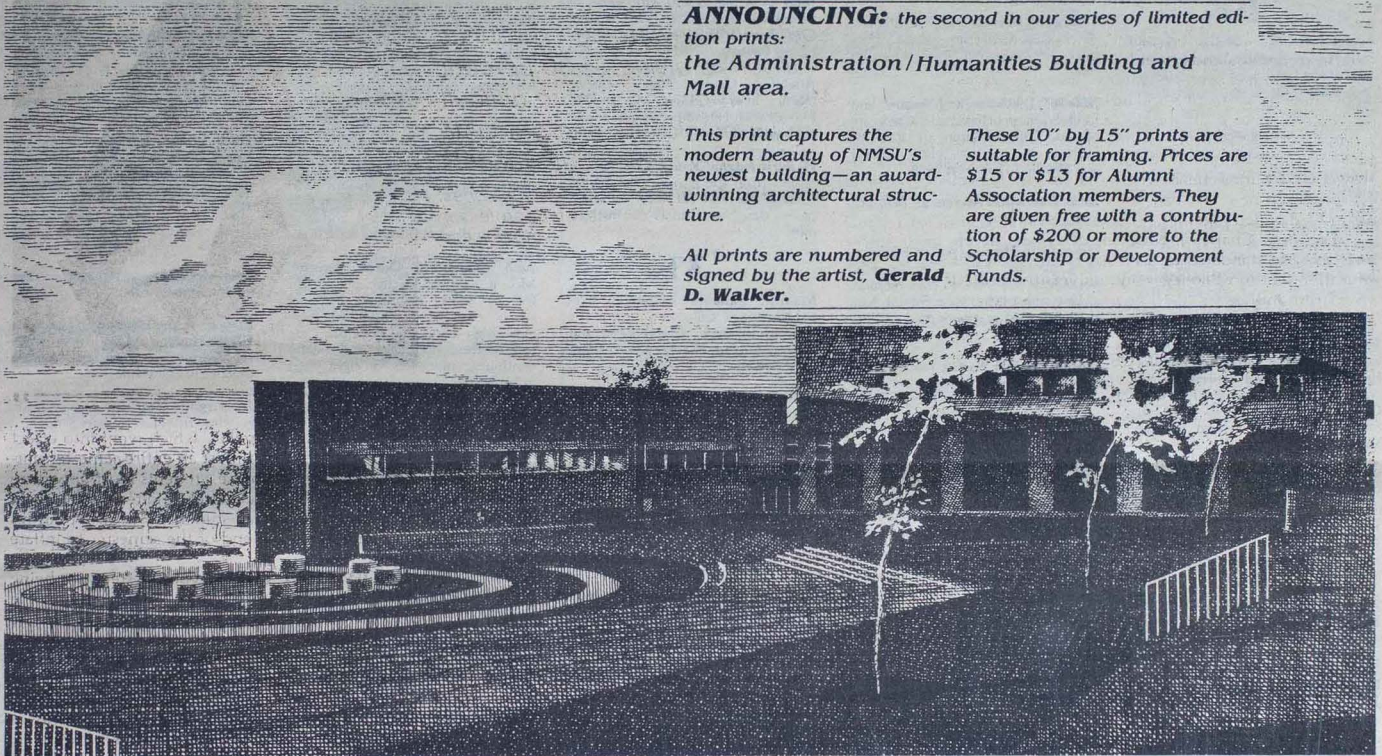


**ANNOUNCING:** the second in our series of limited edition prints:  
*the Administration / Humanities Building and Mall area.*

*This print captures the modern beauty of NMSU's newest building—an award-winning architectural structure.*

*These 10" by 15" prints are suitable for framing. Prices are \$15 or \$13 for Alumni Association members. They are given free with a contribution of \$200 or more to the Scholarship or Development Funds.*

*All prints are numbered and signed by the artist, **Gerald D. Walker.***



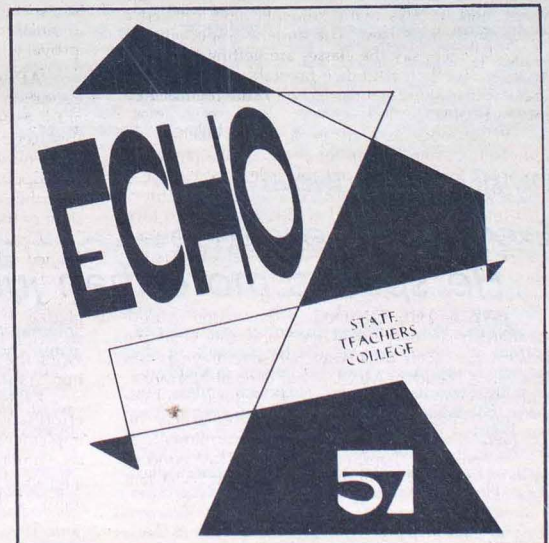
## **FOR SALE:** *Echo yearbooks*

*If you've been interested in obtaining a yearbook you missed while in school (or replacing the dog-eared one you have now), here's your chance!*

*For \$10, the Alumni Office will send the yearbook of your choice. Most dates are available between 1960 and 1980, although supply is limited. Your \$10 will be returned if we run out of your year.*

*The Alumni Office is also accepting gifts of old Echos to be redistributed among alumni.*

**STIR UP SOME OLD MEMORIES!**  
*Support your Alumni Association.*



## 14 Alumni Notes

### '08

**E. Pearl Eneyart Shibley** is living in a retirement home in La Mesa, Calif. Her husband, **Arleigh P. Shibley 1907**, deceased, was a school administrator. Her brother, **Dr. Buel F. Eneyart 1924**, also deceased, was an educator in Calif. Mrs. Shibley's sister, **Grace Eneyart Hill 1912** and her husband **Amrose Hill 1913** are also deceased. Mrs. Hill had been a teacher and Mr. Hill was a school superintendent.

### '17

**Christine E. Bunch**, Joliet, Ill. is a retired teacher.

**Mary Mussetter Ray**, Crowell, Texas, is retired.

### '20

**Zachariah R. Wall**, retired Presbyterian minister, lives in Santa Ana, Calif. He has two children, Zachariah Wall, Jr. and Arlowin W. Wall.

### '22

**Mildred McKim**, Deming, N.M., is retired.

**Mildred Paine Helm**, retired teacher, and husband, Ira, also retired, live in Long Beach, Calif. Her children are Joan Curtis Dallas and Cecil Curtis, Jr.

### '24

**Elsie Shuman** of Kirksville, retired teacher, has been active in community betterment since retirement and was named the Outstanding Adult Civic Leader of 1980 at the Community Betterment Award banquet held in March 1981.

**Xena Eads Johnson** and husband, Victor of Marionville, Mo., are retired.

### '25

**Letha Waddill Morehead**, Pueblo, Colo., is retired. Her children are June Morehead Simonsen and Wayne Morehead.

**Jewell Smith Rickhoff**, retired, lives at Presbyterian Manor in Fulton, Mo. She was the subject of a feature article in the Kingdom Daily News recently. Mrs. Rickhoff and her late husband, **Noah Rickhoff 1925**, were educators before their retirement. She is a member of the American Association of University Women, is active in Sunday school, women's circles and the Presbyterian Church. She has traveled to England, Ireland and Alaska.

**Lenora Childress**, retired teacher, lives in San Diego, Calif.

**Elmer D. Harpham** and wife, Lucille, of Camdenon, Mo., are retired. Mr. Harpham was a teacher and school administrator for 57 years. Their children are Charlotte, Mary, Dorothy and Neva. Neva and Charlotte are NMSU graduates.

**Louise Roberts Colip**, Bethesda, Md., is a retired school administrator. Her husband, Kenneth, is a retired electrical engineer.

### '26

**Rebecca Penick Roepnack**, Wheat Ridge, Colo., is retired.

### '27

**Joseph P. Wright** and wife, Mary Pauline, live in Sulphur, La. He is retired.

**George V. Burnett** and wife, Frances, of Arcadia, Calif., are retired. They have one daughter, Mrs. Dorothy Reed.

**Maebel McCracken Johnson** and husband, Ray, of Riverside, Calif., are retired. Their children are Ray M. Johnson, Jr., Merilyn Johnson Brazil and **Melvin L. Johnson 1958**.

**Alma Gatewood Anderson**, Branson, Mo., is retired.

**James Otto Huston**, retired educator of Columbia, Mo., was recently honored at the 1932-40 class reunion of Lewistown (Mo.) High School. Mr. Huston served as superintendent during those years.

**Chlorie Stickler Porter**, retired dietitian, lives in Cape Girardeau, Mo. Her children are **Ralph O. Porter 1959** and **Ann Porter Gifford 1963**.

**Omer E. Foley**, retired, lives in Fayette, Mo. He and his wife, Thelma, have one son, Carlyle Foley, an attorney.

**Madison H. Lewis**, Fulton, Mo., is a retired school superintendent.

### '28

**Mary Williamson Freeland** and husband, **Neil Freeland 1929**, of Columbia, Mo., are retired. Mr. Freeland has served the past four years as state treasurer of the Retired Teachers Association of Missouri.

**Virginia Henry Cannon** and husband, David, a retired civil engineer, live in Columbia, Mo. They have a daughter, Mrs. Betty Jean Showalter.

**Ida Mae Frank**, Kirksville, Mo., is a retired teacher.

### '29

**Thelma Schroeter Ball** and husband, Jerry, live in Ewing, Mo. She is a retired high school teacher and prin-

cipal and he is a retired rural mail carrier. They have a daughter, Judy Ball Leach.

**Noble G. Griffith**, Clearwater, Fla., is retired. He and his wife, Azalee, have one son, Robert.

**Isabelle Farrington Otto** and husband, Frederick, of Indiana, Pa., are retired.

**Hollis G. Duckworth** and wife, Hazel, of Berkeley, Calif., are retired.

### '30

**James E. Judd**, retired school superintendent, and wife, **Mary Brantley Judd 1931**, retired teacher, live in Sun City, Ariz. They have one son, James B. Judd.

**John O. Attebery** and wife, Edna, of Mountain Grove, Mo., are retired. They have a daughter, Charlene Attebery Payton.

**Adelaide Cauby Finley**, retired teacher, lives in Sedalia, Mo. She has two sons, H. Leland Finley and Major William E. Finley.

**H. Berle Adams**, Kansas City, Mo., is retired from the Kansas City School System. He and his wife, Mildred, have a daughter, Pamela Adams Hermon.

### '31

**Maurine Springs Anderson**, Colorado Springs, Colo., is a clerk at the registration desk, Convention and Visitors Bureau. She has a son, James F. Anderson.

**Helen Myers Reynolds**, retired business teacher, lives in Tucson, Ariz.

**Chloe Fields**, retired teacher, lives in Phoenix, Ariz.

**Arthur W. Hall**, retired, lives in Greeley, Colo. He has one son, Raymond L. Hall, Ph.D.

### '32

**Zelma Foster Owen** and husband, Ellis, of Fresno, Calif., are retired. Their children are Margaret Owen Parsons, George Owen and William Owen.

**Cleo Mercer Dunlap**, Lexington, Neb., is a part-time office worker. She has a daughter, Joan Hendricks.

**Gladys Holloway**, Moberly, Mo., is a retired elementary teacher.

**Beatrice Henderson Goodwin** and husband, Henry, of Galt, Calif., are retired. Their children are Mary F. Ray, Donna M. Noah and Delbert R. Goodwin.

**Marjorie Burton Fisher**, retired teacher, and husband, Mark, also

retired, live in Aurora, Mo. She has two sons, Lawrence Davis and Bruce Davis.

**Laura Christian Evans** and husband, **Charles M. Evans 1934**, of Conway, Ark., are retired. Their children are Mary Slavens and Charlotte Evans.

**Vernon P. Russell**, Green Castle, Mo., is retired.

**Alma Conner Bloom** and husband, Dr. C.E. Bloom, of Kimberling City, Mo., are retired.

**Ruth Motley Hammond** and husband, E.K. Hammond, of Carson City, Nev., are retired.

### '33

**Clara Seckler Paxson**, Mexico, Mo., is a retired teacher. She has a daughter, Jan Paxson Farnen.

**Clarence E. Amen**, retired educator, and wife, Ella, live in Scottsdale, Ariz. Mr. Amen enrolled at Kirksville Normal School in 1923 receiving a teacher training certificate after 10 hours of education, and taught continuously for 46 years. He received his degree after attending only spring quarters and summer sessions. Mr. Amen taught at all levels from first grade to graduate school and also served in all administrative capacities.

**Juell Dougherty Duren**, Fayette, Mo., is a retired teacher. She taught for 52 years, beginning in rural school, then grade school and principal, high school and principal, Central Methodist College and finally continuing education for eight years in her home.

**Mildred Epperson Starr**, retired teacher, and husband, Kerrel, also retired, live in Gravois Mills, Mo. She has a son, Walter Pinnell.

**Edna Finnell Minks** and husband, Roy, of Brunswick, Mo., are retired.

**Verel Rollins Blaine** and husband, Mayhue, live in Las Vegas, Nev. She is retired and he is a USAF Col.(Ret.). They have two married daughters, Barbara Wertz and Margaret Mielke.

**Mary Eleanor Anderson Hughes** and husband, John, live in Sun City, Ariz. She is a retired teacher and he is a retired accountant. They have two sons, John and Robert.

### '34

**Dorothy Hutchison Hodgers**, retired teacher, and husband, John, retired accountant, live in Prescott, Ariz. They have two married daughters, Teresa Starr and Dina Rossman.

**Gladys Spencer Ornes**, retired teacher, and husband, Norman, retired farmer, live in rural Brasher, Mo. They have three sons, Allen Ornes, **Marvin Ornes 1967** and **Dr. W. Harold Ornes 1969**.

**Jesse H. Stinson**, El Paso, Texas, is retired. He and his wife, Ruth, have one son, **Baxter B. Stinson 1950**.

**Ella M. River**, St. Charles, Mo., is retired.

**Rex and Frances James Wiseman**, Simi Valley, Calif., are retired. They have two sons, James and John.

### '35

**Sam S. Cavett, Jr.**, Palm Springs, Calif., is retired.

**B. Maurine Finegan Bemis**, retired teacher, lives in Phoenix, Ariz.

**Helen Curry Deveny** and husband, James, retired osteopathic physician, live in Longmont, Colo. They have two married daughters, Ann McInroe and Judith McKenzie.

**Margaret O'Brian Greenberg** and husband, Leonard, of East Meadow, N.Y., are retired. She works part-time in an abstract office and he is a part-time title reader. They have two children, John and Miriam.

**Edith Streeter Crumpacker** and husband, Olan, live in Pollock, Mo. where he farms. They have one daughter, **Karen Crumpacker Bruch 1963**.

### '36

**Lois McCanne**, retired teacher, lives in Hot Springs, Ark.

**Blanche Bragg Hudson** and husband, **Gip R. Hudson, M.D.**, live in Moberly, Mo. He is a physician in general practice in Huntsville, Mo.

**M. Virginia Harrison**, Encino, Calif., is retired from Los Angeles Schools.

**Marion D. Jones, Jr.** and wife, Madelin, of New Orleans, La., are self-employed. Their children are Elizabeth L. Marion D. III, Catherine and Dawn.

### '37

**Dr. Clifford L. Fagan** and wife, F. Helen, live in Taxbiex, Malta, where he is a Fulbright-Hays lecturer at the University of Malta. He will be a visiting professor at California State University-Sacramento next year. The Fagans have three children, Maureen, Patrick and Michael.

**Leon G. Fox**, St. Louis, Mo., retired in 1978 as senior vice president of Mercantile Trust Company, St. Louis. He and his wife, Elizabeth, have two children, Elizabeth Fox Faris and William L. Fox.

**Ruth Glidewell**, retired teacher, lives in Bakersfield, Calif.

**Dr. William H. Griggs** and wife, Ruth, are living in Davis, Calif. He is retired, Professor Emeritus of Pomology, University of California.

Division Update: *Business*

## Executive-In-Residence

### He speaks more than just the corporate language

When this spring's Executive-In-Residence, Norman P. Neureiter, speaks to students in the Business Division on April 22, he will probably be speaking English. That's not surprising unless you know that he could decide to speak German, Russian, Polish, French, Spanish, Japanese or Italian!

Neureiter is currently the manager of corporate relations for Texas Instruments Incorporated, Dallas, Texas. He comes to that position with a background as a research chemist, an instructor of foreign languages, an interpreter, a scientific attache in Germany and eastern Europe for the Department of State, and one of Texas Instruments' supervisors of

international activities. He has been with the company since 1973 and in his current position since 1980.

Although much of his career has carried him far away from northeast Missouri, Neureiter's birthplace is not far away at all. He was born Jan. 24, 1932, in Macomb, Ill., but left the Midwest to receive his A.B. degree in chemistry from the University of Rochester (N.Y.) in 1952. He received his doctorate from Northwestern University in 1957 and studied for one year at the University of Munich (Germany).

As the Executive-In-Residence, Neureiter will

speak at three sessions to NMSU students. Topics for these discussions will be: "Technology, a New International Currency," "The Corporation, the Public and the Investment Community," and "The Corporate Culture: Life in the Organization."

In his position as manager of corporate relations, Neureiter is responsible for a staff of 21 persons involved in public affairs, economic analysis and investor relations for the total corporation. Texas Instruments has an annual turnover of about \$4 billion. He is also responsible for the staff support to the corporation's president and chairman of the board.

Davis. Mrs. Griggs is retired as associate director of admissions at the same university. Their children are David, Holly and Paula.

**Lorna Conley Bottger**, Paris, Mo., is retired after teaching for 45 years in Monroe County and St. Louis County.

'38

**Robert A. (Red) Graham** of Westport, Conn., was recently elected to the NFL Alumni and Board of Directors, Touchdown Club of America and the Pop Warner Football Scholars Board of Directors. He is also a member of the Alumni Board of Directors, University of Missouri-Columbia. Mr. Graham and his wife, Peggy, are entertainers who do charity shows for handicapped people and organizations that work with the handicapped. They recently completed a 321-performance tour.

**Kenneth Newcomer** and wife Ruth, of Springfield, Mo., are retired. They have two sons, James and Charles.

**Mary Ellen Griggs Kersey** and husband, Harold, live in Artesia, N.M. He is owner of Kersey and Company, Oil Operators, where she is employed. They have two married daughters, Kathryn Alexander and Marie Wade.

**Henry M. Sailor**, Alhambra, Calif., is retired.

**Ralph R. Simpson**, Las Cruces, N.M., is retired. He and his wife, Margaret, have two daughters, Carolyn and Margaret.

**Mildred Gholson**, Jefferson City, Mo., is retired. She is a volunteer docent at Cole County Historical Society in Jefferson City.

**Irene E. Uskudarli** and husband, Ayetullah, live in Istanbul, Turkey. She is teacher/translator at Industrial Credit Bank, and he is managing director, Turkish Foreign Trade Bank. They have two sons, David and Douglas.

'39

**Elie F. Hedrick** and wife, Mildred, of Topeka, Kan., are retired. They have two sons, William and David.

**Walker W. Allen**, Columbia, Mo., is associate director of fiscal affairs at the University of Missouri Medical Center. He and his wife, Doris, have two children, Pinney and William.

**Maurice G. Burnett**, San Jose, Calif., is a department manager, Itek Optical Systems. He and his wife, Letha, have three children, Mrs. Vicki Green, Richard Burnett and Janet Burnett.

**Hazel Newcomer Baurichter** and husband, Cletus, are living in Columbia, Mo. He is treasurer of Silvey Cor-

poration. Their children are Lynne, Stephen, Jane and John.

**Clara Underwood**, St. Joseph, Mo., is retired.

**Norman G. Morse** and wife, Jo, live in Yakima, Wash. He is retired and she is an art consultant. Their children are Susan, Jerry and Scott.

**Rebecca P. Walden**, retired teacher, lives in Fayette, Mo.

**Russell R. Rouse**, Columbia, Mo., is retired after a career with M.F.A., which began in 1944 and lasted until July 1, 1981. Mr. Rouse became principal of Green City (Mo.) High School in 1939 and was later superintendent of that school. He joined M.F.A. in 1944 as a sales representative, was later manager of M.F.A.'s Insurance Brokerage and at the time of his retirement was in administration of the M.F.A. Employees Retirement Trust Fund. Mr. Rouse and his wife, Jewell, have two children, Bette Jewell Baldwin and Mac Rouse.

**Dallas M. Draper** and wife, **Edith La Bonta Draper 1940**, are living in Overland Park, Kan. He is director of music at Village Church in Prairie Village, Kan., and also teaches at the conservatory in Kansas City, Mo. They have a son, Bob.

**Jeanne Mc Glashon Robertson**, St. Louis, Mo., is a fourth grade teacher, Kirkwood R-7 District. Her children are Jean and Don.

'40

**Mary Frances Jamison Porter**, Reno, Nevada, is retired. Her son, Mark, graduated from the University of Southern California in 1981.

**Dorsey V. Guy**, Jefferson City, Missouri, is budget director at Lincoln University. He and his wife, Mary, have two daughters, Marla and Laura.

**Virginia Bray Johnson**, Abilene, Texas, is retired.

**William G. Bondurant** and wife, Leila, live in Kirksville, where he is an administrator at KCOM, and she is secretary, Still National Osteopathic Museum. Their children are David Bondurant and Ann Graff.

**M. Eloise Hardin Lewis**, San Diego, California, is a word processor at San Diego Mesa College.

**Emil L. McNeely**, La Jolla, California, is chairman and chief executive officer, Wickes Corporation, Incorporated. He and his wife, Alice, have one daughter, Mrs. Sandra Gessl, and three sons, Gregory, Mark and Kevin.

**Virginia Embree Burns** and husband, Edward Burns, D.O., live in Toronto, Ontario, Canada. She is a secretary. They have two sons, Edward and Alfred.



Harry's classmates are like grandkids

1929 graduate Harry Stroup

"Anytime you quit learning, you're in a bad way." Harry Stroup must be in a very good way, then. An NMSU graduate in 1929, he has built up 278 college hours over the years and is now enlarging this store of knowledge with an NMSU Wednesday night class, Personal Income Tax Preparation.

"I know I'm sending the government more than I should," says Harry (only his father is known as Mr. Stroup). Since he fills out his own tax forms, he decided to take the course.

Harry's teacher, Eugene Croarkin, associate professor of accounting, says "He's the nicest man." Harry is "picking up everything he needs to pick up" in the tax class and is concerned about learning from a personal standpoint, Croarkin says.

Originally a chemistry major with a math minor, Harry says this class is hard as it deals with accounting, and the homework is more difficult to understand than it used to be. And although he's more interested in farming than in investments and capital gains or

losses, he still feels the course is worth his while. "Anybody that has 278 hours likes to learn," he says.

"I was more accustomed to studying back years ago," he says, when students had to get above average grades to be on an athletic team. Harry played on the football team when Curly McWilliams was coach. When dirty after practice, he says he and his teammates would often wade through the lake (which is now the Quadrangle) rather than cross over one of the two bridges that spanned it.

His classmates are "fine and helpful," he says. "They are like grandkids." Harry is very much a "people" person and has many memorable stories to relate about the contacts he has made through his life.

A formal educator for 42 years, he was a superintendent in St. Charles, Mo.; a principal at Downing, Mo.; and a teacher of industrial arts at Kirksville Junior High and Normandy Junior High in Normandy, Mo. "I love industrial arts drawing." He still draws and is now, in fact,

building a garage at his home in LaPlata, Mo.

Although retired from education, Harry and wife, Louise ('62), still grow soybeans, wheat and corn in LaPlata and farm in southeast Missouri. Harry is also involved in numerous community organizations, such as the American Legion; the Shrine Club; the Adair, Macon and Missouri Historical Societies; and the Presbyterian Church.

An extensive traveler, Harry still keeps in touch with his friends around the world. Whether they live in Japan or Australia, Harry's friends receive a new Christmas poem each year because "I love to write," he says.

So when does Harry stop all of this incessant activity? He doesn't. "Did you know Lawrence Welk and I were twins?" Harry asks. "We both will be 79 on March 8."

"Anytime you quit working, you're retired—out of shape. I'll be doing something as long as I live."

*By Cheryl Hask*

**Nina Clare Knight**, St. Charles, Mo., is a broker and salesperson with Realty World Clark Cole, O'Fallon, Mo. She has two sons, Joshua W. Knight III and Claude C. Knight.

**Martha Decker Blair**, Wichita, Kan., is a classroom teacher.

'41

**Marian Porter Sunnen** and husband, August, live in Chatham, Ontario, Canada. Mr. Sunnen is president of Sunnequip, Ltd. They have four sons, James, John, Paul and Donald.

**Karl B. DeVault**, Spirit Lake, Iowa, is retired.

**Ken E. Cooley**, Tulsa, Okla., is a senior safety/environmental engineer at Williams Engineering in Tulsa. He and his wife, June, a teacher, have three children, Doug, Jane and Martha.

**The Rev. Franklin W. Greene**, Redlands, Calif., is senior minister First United Methodist Church in Redlands. He and his wife, Carol, have two sons, Rustin and Bryan.

Division Update: Education

Study shows value of master's degree

Recent research completed by the Education Division indicates that substantial economic benefits are gained by acquiring an NMSU master's degree in education.

The study, "The Economic Benefits of Graduation Degrees in Education," compiles information from approximately 50 percent of the NMSU education master's degree graduates from 1975-1980. Breakdowns for the degrees are given in terms of the salary received before achieving a master's degree, the present salary received and total investment in graduate study.

The salary increases ranged from about 26 percent for males in the counseling and guidance master's program (average salary gain from \$13,045 to \$17,559) to 86 percent for males in the elemen-

tary administration master's program (average salary gain from \$10,456 to \$20,685). The total investment to acquire a master's degree in education ranged from \$2,243 to \$6,806. These figures were influenced by individual direct costs, such as tuition and books, and indirect costs such as housing and babysitters.

About 500 people are making an investment this spring in the education master's program, which offers master's degrees in elementary education, reading, counseling and guidance, and elementary and secondary administration.

Judson Martin, head of the Education Division, says the master's degree in teacher education in the 1980s, '90s and the year 2000 will be as popular as the bachelor's degree was in the 1950s and '60s.

Because of the current trend for further education, Martin suggests that everyone should consider graduate study, as "you'll be competing with other people who have master's degrees."

In addition, Martin says some jobs require master's or higher degrees. Many graduate students enter the administration program, which has the largest graduate enrollment in education.

A master's degree is an opportunity which can be achieved in 30-32 semester hours during a nine-month academic year, three summers or any combination thereof. Gordon Richardson, professor of education and co-sponsor of the economic benefit research, said the findings of the report suggest "it is better to invest in yourself than in a bank at 15 percent interest."

## 16 Alumni Notes

**Margaret McWilliam Graham** and husband, M.W. Graham, D.O., live in Celina, Texas. They have two married daughters, Virginia Moeller and Barbara Terry.

**Edith Gallop Farkas**, Hawthorne, Calif., is a structural engineer at The Aerospace Corporation. She and her husband, Stephen, an optician, have one son, Stephen Farkas, Jr.

**Elaine Gillum Eitel**, and husband, John Eitel, D.O., live in Port Neches, Texas. She is an artist, miniaturist and actress. Their children are Lynda Eitel and Bette Eitel Birdsong.

**Dr. Thomas B. Martin**, Lakeland, Fla., was recently honored with the appointment to an endowed chair at Florida Southern College. Dr. Martin, professor of business administration at Florida Southern, was named to the William F. Chatlos Professorship in Business Administration.

**Elizabeth Finnerty Muck**, Troy, Mo. is retired after 52 years of teaching.

**Glen T. Byram** and wife, Agnes, of Athens, Ill., are retired. Their children are Barbara Byram Milman and Donald Byram.

**Lillian Gray Harbison** and husband, Herman, of Iowa City, Iowa, are retired.

**Lester L. Eitel** and wife, Alba, live in Marceline, Mo. He is a retired Santa Fe conductor. Their sons, Richard and Leslie are both NMSU graduates.

**Marietta Jonas Jayne** and husband, Edward R. Jayne, live in Kirksville, where he is an attorney. He was one of three recently honored at the School of Law, University of Missouri-Columbia Law School Alumni Association awards presentation. Annually, two alumni and a non-alumnus are honored as Outstanding Graduates of the School of Law whose "distinguished careers illustrate the diversity open to the school's graduates." Mrs. Jayne, a member of the NMSU Board of Regents, and the Jaynes' three sons, Capt. Marty Jayne, Randy Jayne and Thomas Jayne and their families attended the awards presentation.

**Dr. John W. Schwada**, Mesa, Ariz., is a professor of political science on sabbatical from Arizona State University. Dr. Schwada retired as president of Arizona State University in June 1981. He and his wife, Wilma, have two children, John and Ruth Ann.

**Ira O. Pollock, M.D.**, and wife, Virginia, live in Oklahoma City, Okla. He is a surgeon.

### '42

**Ruth Fountain Parrish**, retired teacher, and husband, Henry, a farmer, live in rural New Hartford, Mo. Their children are Norma, Wilma and Henry.

**Dr. Mark Harrison**, Washington, D.C., is a professor of physics at the American University.

**James M. Ross**, El Sobrante, Calif., is vice president of Bank of America. He and his wife, Waneva, have two daughters, Kathleen and Marsha.

### '43

**Mary V. Harrison Slaton** and husband, R. Marion, are living in Holtville, Calif. She is a teacher and he farms. Their children are Francis, Rebecca, Robert, Stephen and Margaret.

### '44

**Elburn O. Gregory** and wife, L. Zelma, live in Ault, Colo. He is a retired elementary principal, now self-employed, and she is a retired librarian. They have two children, Dwight and Donita.

**Avalee Eiffert Carter** and husband, Albert, live in Dallas, Texas, where she teaches at The Alexander School, and he is a restaurant owner.

### '45

**Lola Floy Borron Bowen** and husband, Edward, live in Novelty, Mo. She is a retired teacher and he is a retired farmer and stock buyer. They have three daughters, **Bessie Bowen Grod 1943**, Roberta Bowen Bragg, and **V. Gene Bowen Merritt 1950**.

**Moneaka Elam Heitmeier** and husband, Henry, live in Madison, Mo. She is a teacher. They have a son, Mickey.

**Martha McDuffee Sheffield** and husband, Cecil, live in Richmond, Va. He is an agent for Equitable Life Assurance Society. They have two children, Ward and Charles.

**Fred H. Smith**, Gorin, Mo., is a retired school superintendent. He and his wife, Violet, have two children, Janet and Pete.

**Dr. Elizabeth F. Spencer**, Muncie, Ind., is a professor of special education at Ball State University in Muncie.

**Velda Linder Ewing**, a second grade teacher, and husband, R. K. Ewing, D.O., live in Perkins, Okla. Their

children are R. K. Ewing II and Nancy Ewing Glover.

### '46

**Lucille Hockett Alley** and husband, Thomas, are living in Orange, Calif. She is a sixth grade teacher and he is an appraiser, Federal Housing. Their son, Chris, is a medical student.

**Robert E. Souders**, Topeka, Kan., is an administrator and instructional specialist in industrial education and drivers education. He and his wife, Betty, have two daughters, Nancy and Becky.

**Helen L. Huff** and husband, Dick, live in Springfield, Mo., where she is an assistant professor at Southwest Missouri State University. Mr. Huff retired in February 1982 from Southwestern Bell Telephone Company. He began his telephone career in 1947 in Kirksville and in 1969 was transferred to Springfield where he has been a specialist on the divisional staff.

### '47

**Huella Griffith Darling** and husband, **Martin E. Darling 1949**, are living in

Thermopolis, Wyo. She is an office education teacher and he is a media specialist for the county. Their children are Pat, Deb and Jane.

**Helen Hoewing Blum**, Sun City, Calif., is a private duty nurse.

**Hilman H. Knapp**, Macon, Mo., is a sales representative for Herrf Jones Company. He and his wife, Betty, have two daughters, **Mrs. Dana Clinkingheard 1977** and Mrs. Ellen Bowdon.

**John Spainhower**, Kirksville, is director of transportation and athletics at Kirksville Senior High School. He was recently honored by the renaming of Tiger Field, home of the Kirksville Senior High football team for many years. The field is now Spainhower Field, in recognition of John Spainhower's 34 years as coach and athletic director.

**Mildred Akers Safford** and husband, Carl, live in Mexico, Mo., where she is a fifth grade teacher and he is a businessman. Their children are Cathy, Dan, Stephen and Monty.

### '48

**Clifford H. Bryan**, wife Devilla, and daughters, Cynthia and Michelle, live in Yuma, Ariz., where he is a secondary school physical education teacher and athletic coach.

**Helen E. Thompson Miller**, Seattle, Wash., is a retired teacher.

**Earnest W. and Ada B. Rice Phillips** are living in Wichita, Kan. He is a senior program support representative IBM Corporation and she is senior office assistant, election committee, Sedgwick Company. Their children are Teresa and Mark.

**Joe Henry** of Clarksville, Mo., is retired after 30 years with Clopton School District. Dr. Charles McClain, president of NMSU, was the speaker at Mr. Henry's retirement dinner at Clopton School in April 1981.

**Dr. Raymond O. Shelton**, Superintendent of Hillsborough County Schools, Tampa, Fla., was recently elected Chairman of the Association of Large City School Superintendents, for 1982, at the association's annual meeting in Toronto. He has served since 1967 as the school superintendent in Tampa, which with 112,000 students is the 15th largest school system in the nation. He and his wife live in Tampa.

**James B. (Jeff) Neal** and wife, Jean, are living in Galveston, Texas, where he is training director, American National Life Insurance. She is manager of faculty records at the University of Texas Medical School. Their children are Don, Carol and Patricia.

## 'We are advocates for children'



**Gale Bartow,**  
AASA president-elect

Gale Bartow spends much of his time traveling between Washington, D.C., and Blue Springs, Mo., where he is superintendent of Blue Springs R-4 School District. The force that draws him to the capitol is his position as president-elect

for the American Association of School Administrators (AASA).

Bartow, who received his BSE ('49) and MA ('52) from NMSU, will take office as president of the association in March 1983. Members of the 18,000-member group elected him to the office that does not officially begin until next year, but Bartow will spend this year, working along with the current president.

Through the efforts of the Missouri Association of School Administrators, Bartow got involved on the national level, and one year ago he was elected vice president. He has been a member of ASA since the late 1950s when he first became a school superintendent.

As president, Bartow will spend 40 percent of his time on official AASA duties, and they will pay half of his salary as superintendent.

The organization has a staff of 55 members in Washington, D.C. "We are advocates for children on the national level," Bartow said. "The national organization helps members in the profession keep current and be knowledgeable about leadership and learning."

With the position, Bartow has the responsibility of representing the association at state and national conventions. Ten members of the organization are on executive committees for other countries, and, as president, Bartow will travel extensively.

One of his goals while in office is to involve Missouri more on the national level. "We need to continue to improve the image of education, and it is up to us to inform superintendents of the need to tell people of the importance of education of younger people," Bartow said.

## Division Update: Fine Arts

### Faculty members are living dolls

"Living dolls" is one way to describe the soft sculpture caricatures of art instructors—a final project of the Fibers I class last semester. "It (the project) is important because it combines all of the techniques that the students have been learning all semester—stitchery skills, quilting, weaving and even some dressmaking," Susan Shoaff, associate professor of arts, said.

Students begin by selecting a faculty member to portray in their one-tenth life-size sculptures. After a brief interview where they study the instructor's features, they set about creating their project.

The face is first, formed by quilting a nylon hose stuffed with cotton batting. Hair and eyes are added with yarn and twine of the appropriate colors.

To go along with the head, students must also form and dress a body. A wire armature has to be clothed in articles typical to the instructor's attire.

"It is hard for students to work on a three-dimensional project. They are used to completing two-dimensional drawings," Shoaff said.

She said she would continue to use the project in her class, and she knew that the students would try it again on their own. "It worked out really well. The students had their doubts at first, but I knew it would be good."

Shoaff said next semester's project would be sculptures of people outside the division, such as President Charles McClain, Dean of Students Terry Smith and other University administrators.



**William E. Neff** and wife, **Helen Hartman Neff 1971**, live in Macon, Mo. She is a teacher at Macon Middle School, and he is Judge, Division II Circuit Court. Their children are Katie, William, Rebecca, Deborah and Patricia. Rebecca, Deborah and Patricia are NMSU graduates.

'49

**Noah A. Bunch**, Columbia, Mo., is retired as Dean of Art and Sciences, Sauk Valley College, Dixon, Ill. He and his wife, Doris, have two children, Debbie and Craig.

**Jane Bailey Muir**, Novinger, Mo., is a title I reading teacher at Willard Elementary School in Kirksville. She was selected as teacher of the year by the Kirksville Community Teachers Association in April 1981.

**Edna C. Rogers**, Kirksville, Mo., retired from teaching in May 1981. She taught in rural schools in Adair, Macon and Knox Counties for a number of years, and taught at Benton Elementary School and Junior High in Kirksville before moving to Illinois. She returned to Kirksville in 1965 and taught at Willard Elementary School until her retirement.

**Samuel M. Spees**, Columbia, Mo., is in textbook sales. He and his wife, Della, have two daughters, Suzanne and Teresa.

**Cleta Gordy Matthews** Union City, Pennsylvania is a third grade teacher. She has a son, Gordon W. Matthews.

**James T. Byland**, Moberly, Mo., is director of Vo-Tech education, Moberly Schools. He and his wife, Elizabeth, have three sons, James D., Thomas and Robert. James and Thomas are NMSU graduates.

'50

**Shirley Olson King** and husband, Wallace, live in Tempe, Ariz. She is a part-time high school mathematics teacher and he is a full-time high school mathematics teacher. Their children are Mark and Julie.

**William T. Smoot**, Las Vegas, Nev., is a technician for the Nevada National Guard. His wife, Nina, is director of quality assurance, Boulder City Hospital. They have two daughters, Tanya Troncin and Tamara Yancey, and a son, Kevin Smoot.

**Beatrice McNeely**, Santa Ana, Calif., is retired.

**Walter I. Hammock** and wife, Clara, are living in Colorado Springs, Colo. He is an elementary principal and she is a junior high school secretary. Their children are Gail, Nancy, Martin and Carol.

**Serena Gaunt Cooper** and husband, J.D., of Macon, Mo., are retired. They have three daughters, Dorothy, Pearl and Johnnie Sue.

**Ruby M. Bebermeyer**, Warrenton, Mo., is a first grade teacher at Wright City (Mo.) R-2 School.

**Charles Louis Cody** and wife, **Norma Shearer Cody**, live in Moberly, Mo., where he is assistant superintendent of schools and she is an elementary music teacher. They have a daughter, Cathy, married to **Thomas G. Ryan 1977**.

'51

**Martha Sleight Eddens**, retired elementary teacher, lives in Centralia, Mo.

**Dr. Donald L. Payne**, Hermitage, Mo., is superintendent of Hermitage R-IV School. He and his wife, Peggy, have four children, Richard, Reba, Randal and Ryan.

**Willard A. Sawyer** and wife, Kaye, live in Elk Grove, Calif., where she is high school principal and she is a hospital secretary. They have two children, Erin and Kimberly.

**Lea Rains Summervill** and husband, Glen, live in Wichita, Kan., where she is a substitute teacher and he is senior project manager, Boeing Aircraft Company. They have two sons, Scott and Marc.

**Harold R. Schwartz, D.O.**, and wife, V. Carol, are living in Columbus, Ohio. He is director, service of osteopathic medicine at Doctors Hospital in Columbus.

**George W. Waddill**, Fort Sumner, N.M., retired from teaching in 1981. He and his wife, Jennie, have four children, George Jr., Karen, Sharon and Stephen.

**Marlin A. Field** and wife, Lois Jean, are living in Hillsdale, Mich. He is director, ERC, at Davis Middle School, and she is a graduate student. Their children are Marla, Gary and Kenneth.

**Dr. Fred J. Ledbetter**, Winter Park, Florida, is a coordinator of vocational programs. He and his wife, Fern, a teacher assistant, have three children, Daniel, Nancy and Susan.

**Mary Bliss Jay**, Manassas, Va., is an associate professor and program head of secretarial science at Northern Virginia Community College-Manassas Campus. Her children are Terri, Tracey and Bruce.

**Margaret W. Muff Parcellle**, Milwaukee, Wis., is a health, physical education and home economics teacher. She is also a Red Cross instructor in CPR, first aid and basic nursing skills. Her husband, Charles, is a real estate broker.

**Mary Off Carmickle**, Sarasota, Fla., is secretary-treasurer of Carmickle Enterprises, Inc., and Carmickle Quality Painting and Decorating, Inc.

She has three sons, Philip Johnson, David Johnson and Kevin Johnson.

**Joan R. Cochran** and husband, Richard, live in rural Cairo, Mo., where he is a self-employed farmer. They have a son, Gregory.

'52

**David L. Murphy**, Farmington Hills, Mich., is manager of consumer loan operations, Ford Motor Credit Company. He and his wife, Sue, have three daughters, Cindy, Linda and Susan.

**F. Marie Mallett Boyer** and husband, Malcolm, of Kansas City, Mo., are retired.

**John Wohlschlaeger** and wife, **Betty Roberts Wohlschlaeger 1954**, are living in Mesquite, Texas. He is drug manager, Skaggs Stores, and she teaches English at North Mesquite High School. Their children are Laura, Trent, Gail and Steve.

**Harold E. Coffman**, Spring, Texas, is a district operating manager with Graybar Electric Company. He and his wife, Shirley, have two children, Diana and Stephen.

**Major General John V. Cox**, Santa Ana, Calif., is commanding general, 3rd Marine Aircraft Wing. He and his wife, Patricia, have four children, Donna, Janet, John and Allison.

**Virgil H. Hoemann, M.D.**, Long Beach, Calif., is a self-employed physician and surgeon. He and his wife, Sandra, also self-employed, have five children, Eric, Paula, Jim, Sandi and Michelle.

**Glenora Weeks Stone**, Elsberry, Mo., is a retired teacher. Mrs. Stone taught a total of 43 years before retiring in 1965.

**Stewart D. Sawyer** of Rolla, Mo., retired in May 1981 after 29 years in federal service. He retired as a cartographic technician with the Geological Survey.

'53

**Jerry L. Burgener**, Fountain Valley, Calif., is executive vice president of Components Center, Inc. He and his wife, Carol, have three children, Gala, David and Lori.

**Carol Baker Wall** and husband, Joe A. Wall, M.D., live in Houston, Mo. Their children are Susan Wall Horton, David Wall and Ruth Ann Wall Groff.

**Margaret Truitt Ferguson**, Jameson, Mo., teaches first, second and third grades at Coffey, Mo. Her children are Deanna, William and Kevin.

**Harold C. Ledbetter, D.O.**, lives in Daytona Beach, Fla. He and his wife,

Deborah, have three children, Lisa, David and Laura.

**Maggie Gillum Hazelwood** and husband, Rollie, live in Wright City, Mo., where she is a primary teacher. He is retired. They have one son, Edwin Hazelwood.

**Eleanor Scott Baker** and husband, John, live in Battle Creek, Mich., where she is administrative assistant at Binder Park Zoo. He is a product engineer, Clark Equipment Company. They have two daughters, Amy and Laura.

**Wanna Gene Meador**, Florissant, Mo., is principal of Riverview Elementary School.

'54

**Betty Clark Charney** and husband, John, live in Puyallup, Wash. She is a teacher and he is a warehouseman. They have a daughter, Delynn.

**M. Evadine Wilson Overfelt** and husband, William, are living in Centralia, Mo., where she is a fourth grade teacher at Chance Elementary School, and he is a State Farm Insurance agent. Their daughter, Lynda, is a graduate of Southwest Missouri State University, and son John, is a 1981 graduate of NMSU.

**Dorothy Schneider Barnard**, retired teacher, and husband, Oliver Barnard, retired elementary principal, live in Shell Knob, Mo. Their children are Janet, Marilyn, James and Susan.

**Elwood E. Sapp** of Collinsville, Ill., has been promoted to division manager for Wausau Insurance Companies' subsidiary, Countrywide Services Corporation, St. Louis, Mo. As division manager, Sapp will direct and manage claim and loss investigation activities. He joined the company in 1980, and was account manager prior to this promotion.

**Evelyn Cochran Williams** and husband, John, are living in Libertyville, Iowa. She is office education coordinator at Van Buren Community School in Keosauqua, Iowa, and he is a farmer and school bus driver. Their children are Steve, Jim and JoAnn. Steve is a senior at NMSU.

**David W. Strickler** and wife, Catherine, live in Edina, Mo., where he is a vice president and cashier of Citizen's Bank. She is a casualty insurance agent. Their children are John, David Jr., Steve, Anne and Bill.

**Frank A. Melvin** and wife, Doris, live in Chesterfield, Mo., where he teaches in Parkway School district. She is an account executive. Their children are Stephen, Jeffrey and Mark.

**Greta Madge Franks**, Excelsior Springs, Mo., is a third grade teacher.

**Juanita Dowell Vaughan** and husband, Louis, live in Moberly, Mo. She is a retired teacher and he is semi-retired, now a part-time airport manager. They have two sons, Robert and David.

**Nina Nickell Carpenter** and husband, Lamar, live in rural Norborne, Mo. She is an accountant for Stet (Mo.) elevator and Feed Mill Farm Store. He is a farm owner and operates and manages the Stet elevator. Their children are Douglas, Rita and David.

'55

**Linda Heimer Aycock**, Carlsbad, N.M., is coordinator of elementary and secondary education, Carlsbad Schools. Her husband, Boncile, is a businessman and rancher. Their children are a daughter, Angela, and twins, Ben and Alicia.

**Octa Ayers Phillips** and husband, James, of Green City, Mo., celebrated their fortieth anniversary recently. They were married Oct. 25, 1941 and have resided on a farm near Green City all their married life except for five years when Mr. Phillips was in the service. They are the parents of one son, Robert.

'56

**Nancy Kendrick Baylor**, Tulsa, Okla., is director of social services at Tulsa Smith Teaching Clinic, Oklahoma College of Osteopathic Medicine and Surgery. Her husband, Jack, is a psychotherapist in private practice.

**Shirley Chun Harper**, Pueblo, Colo., is a medical librarian. Her children are Vincent, Duke and Joseph.

**Keith Simler** and wife, Wanda, of Kirksville, celebrated their 25th wedding anniversary June 24. An open house was hosted by their sons, Mark and Paul.

**Kenneth D. Barker**, Burlington, Iowa, is office education coordinator at Van Buren Community School in Keosauqua, Iowa, and he is a farmer and school bus driver. Their children are Steve, Jim and JoAnn. Steve is a senior at NMSU.

**David W. Strickler** and wife, Catherine, live in Edina, Mo., where he is a vice president and cashier of Citizen's Bank. She is a casualty insurance agent. Their children are John, David Jr., Steve, Anne and Bill.

**Frank A. Melvin** and wife, Doris, live in Chesterfield, Mo., where he teaches in Parkway School district. She is an account executive. Their children are Stephen, Jeffrey and Mark.

**Greta Madge Franks**, Excelsior Springs, Mo., is a third grade teacher.

**Velma Hanes Yeoham** lives in Irving, Texas. Her husband, James A. Yeoham 1951, D.O., is deceased. Their children are James III, Loraine and Paul.

**Leonard J. Mengwasser** and wife, **Patricia Reeder Mengwasser 1959**, live in Hurst, Texas. He is vice principal of Hurst Junior High, and she is a secondary curriculum coordinator. They have two children, Bradley and Laura.

Division Update: Health, Physical Education and Recreation

Recreation majors find wide employment variety

A student graduating with a B.S. in recreation can become anything from a geriatrician to a cruise director. Since the recreation major was revamped in 1978, the curriculum has been changed to accommodate the interests of a variety of students, H. A. Walmsley, associate professor of health, physical education and recreation, said.

By the time students have reached their junior years, Walmsley said they are mostly interested in a specific area of recreation. Students are encouraged to select more than one of the 14 areas offered. Equine studies, aquatics, therapeutics, business, communications, resource management, gerontology, biofeedback and criminal justice are among the selections offered to students.

Before graduation, recreation majors are re-

quired to have some practice in field work. This on-the-job training can mean two or three different working experiences upon graduation.

The job opportunities open for the graduates can be generally broken down into public, private, commercial and volunteer types of recreation.

Walmsley said the largest of the four is private; with the current emphasis society is placing on physical fitness, private clubs are in need of recreation specialists.

In addition to country clubs, resorts and health spas, "more and more companies are setting up recreation programs. Industry is starting recreation programs because it has been proven that employees work better and are satisfied if they have a recreation program," Walmsley said.

Another region open to students is geriatrics. Walmsley said people are living longer and moving into complexes, and they need programs designed to keep older adults active and healthy.

On the public level, Walmsley said the parks and recreation departments of cities and districts are always in need of recreation directors. "Public is one form of recreation that will always be there, although they offer the least opportunities," he said.

"One of the largest opportunities is commercial," Walmsley said. Into this category goes amusement parks, professional sports, sports clubs, bowling alleys and tourist establishments.

On the volunteer level, Walmsley said, "It is limitless." Camps, churches, Boy Scouts, Girl Scouts, YMCA and YWCA offer part- or full-time work.

## 18 Alumni Notes

**Norman D. and Martha Reinhard Frazier** live in Normal, Ill. He is a teacher and insurance broker and she also teaches. Their children are Kelly, Scott and Barry.

**Judy Kottmann Hawkins**, Sun-nyvale, Calif., is manager Hewlett Packard (Electronics).

**Eugene L. James**, St. Louis, Mo., is a social studies teacher at Lindbergh Senior High School. He and his wife, Virginia, have three children, Gina, Bradford and E. Bret.

### '57

**Carol Redman Gullion** and husband, **Dan J. Gullion 1967**, are living in Ottumwa, Iowa. He is a teacher. Their children are Jeff, Gary and Heidi.

**Max E. Blackburn** and wife, Tomi, live in Topeka, Kan. He is district sales manager for Perfect School Plans, and she is an aerobic instructor. His children are Vicky, Michael and Rebecca.

**Roxie Wells Emmack**, retired teacher and husband, Chester, retired farmer, live in Powersville, Mo. They have one son, Mialo Emmack.

**C. Wendell Cassady**, retired mathematics teacher, lives in East Peoria, Ill. He has a daughter, Jane.

**Willa Huntsman Griffin**, husband, Dale, and daughter, Carolyn, live in Macon, Mo. She is teaching in Bevier (Mo.) Public School and he farms.

**Wayne Sterrett**, Muscatine, Iowa, is associate dean of students at Muscatine Community College. He and his wife, Alma, have two children, Linda and Craig.

**Roger L. Edmonds**, Torrance, Calif., is contracts manager, Hughes Aircraft Company, El Segundo, Calif. He and his wife, Bel, have three children, Sherryl, Craig, and Sandra.

**Dan D. Bradbury**, Jefferson City, Mo., is an associate professor of history at Lincoln University in Jefferson City. He has a daughter, Allison.

### '58

**Barbara Keris Maddex** and husband, **Lewis J. (Jack) Maddex 1959**, are living in rural Lebanon, Mo. Barbara and Jack, former teachers in St. Louis, recently purchased a campground, grocery store and service station nine miles west of Lebanon. Their new venture is named Frontier Campground and Market and is located three miles from Bennett Springs, famous for trout fishing in Missouri.

**Kenneth A. Dinger**, wife, Twyla, and children Jill and Gail, live in Center Point, Iowa, where he is a high school teacher, athletic director and assistant track coach. She is a day-care mother.

**Jerald D. Blasi**, Clarinda, Iowa, is an employee relations manager. He and his wife, Martha, have four children, Cheryl, Donna, Janice and Kelly.

**Carolyn Pittman Williams**, Knoxville, Iowa, is librarian at Knoxville Junior High. She and her husband, Floyd, a farmer, have two children, Lane and Lynn.

**Patricia Schnepf Armato** and husband, Andrew Armato, D.O., live in Iola, Kan. He is a radiologist. Their children are Rebecca, Michael and Douglas.

**John L. Fiala** and wife, Delores, are living in Grand Junction, Neb. He is farm stores division controller, Peavley Company, and she is a gift consultant. Their children are Jay and Tracie.

**Paul R. Gonneman**, Scottsdale, Ariz., teaches geography and economics at Scottsdale High School. He is also assistant radiological defense officer for Maricopa County and has been an L.T.C. in the USAFR. He retired from the Reserve in Dec. 1981. Paul and his wife, Marjorie, have five children, Karla, Krista, Katrina, Carrie and Kendra.

**Marilyn Patricia Hays** and husband, D.L. Fortney, live in Olathe, Kan. She is a real estate broker, Kansas Hays Real Estate Company, and he is owner and president, Overland Cabinet Company, Inc. Her children are Lisa Ledbetter, Cerio, David Ledbetter and Laura Ledbetter.

**Dr. Robert L. Harman**, Lexington, Ky., is associate director of the University of Kentucky's Counseling and Testing Center. He recently became a Diplomate in Counseling Psychology, American Board of Professional Psychology. This is the highest award the psychology profession awards its practitioners.

**Imogene Carpenter Newbrough** and husband, Martin, live in Paris, Mo. She is a junior high language arts and social studies teacher. They have a daughter, Gloria Leamer, and a son, Ronald Newbrough.

**Irene E. Starbuck**, Fayetteville, Ark., is a teaching assistant at the University of Arkansas while working on a doctorate degree. Her children are Roland, Gail and Dewayne.

### '59

**Dr. Roger L. Augspurger**, Columbus, Neb., is a cluster chairman at Platte Community College. He and his wife, Donna, a secretary, have four children, Denise, Dana, Roland and Doreen.

**Harley T. Wright**, assistant professor of family and community medicine at University of Missouri-Columbia, has been elected president of the Missouri Public Health Association for 1982.

**Evelyn Wilson Haas**, Modesto, Calif., retired in June 1981 after teaching 29 years, 10 years in Missouri and Illinois and 19 years in Modesto. She has a daughter, Mrs. Dianna Fashauer.

**John D. Hawkins**, Albuquerque, N.M., is a sales engineer, Tektronix, Inc. He and his wife, Donna, have two children, Lori and Michael.

**Marilyn Woolf Miller** and husband, Russell, are living in Shawnee, Kan. She is a substitute elementary teacher in Shawnee Mission School District. He is a supervisory accountant for the U.S. Department of Agriculture in Kansas City, Mo. Their children are Nancy and Robert.

**Howard R. Eiffert**, Columbia, Mo., is manager of Boone County Lumber Company, and was recently named to the Board of Directors of First Bank of Commerce in Columbia. He and his wife, Lucille, have three children, Bradley, Gregory and Sharon.

**Althea Cason Macumber** and husband, Roland, live in Macon, Mo. She is a retired reading teacher and he is a retired farmer. They have two children, **Rebecca Sue Macumber 1961** and John P. Macumber.

**Opal Arthur Blair**, Trenton, Mo., is a retired elementary music teacher. Her children are Richard Guilkey, Roland Guilkey and Frances Guilkey McGuire.

**Virginia Murrain Barrows** and husband, Jerry, live in rural Purdin, Mo. She is a business and journalism teacher at Linn County R-1 Schools, and he is a retired farmer. Their children are Phillip, Robert and Cary.

**Richard K. Streeter**, wife, Lynnette, and children, Lorena, Rachel, Sheryl, James and Richard II, live in Bentonville, Ark. He is a self-employed sales and marketing consultant.

**Jerry W. Porter**, Des Peres, Mo., is an investment broker and vice president of marketing at Paine Webber. He and his wife, Ann, have six children, Julie, Regan, Jon, Nicky, Amy and Holly.

**Alva Newkirk Byler**, Ethel, Mo., is a retired elementary teacher. She has one daughter, Mrs. Marilyn Mundell.

### '60

**Richard L. Eitel**, Bunceton, Mo., is a guidance counselor at Cooper County R-IV Schools.

**Neil R. Curtis**, wife, Barbara, and sons, Gregg and Derek, are living in Glendale, Ariz. He is owner/operator of Electronic World, Ltd. (distributor of electronic and videoelectronic amusements). Barbara is secretary to the president, Donimar Corporation.

**Norman Keith Motter**, Dallas, Texas, is a captain, American Airlines. He and his wife, Patricia, an elementary teacher, have a son, Carl.

**Sylvia Stout Swift** and husband, **Larry V. Swift 1961**, are living in Overland Park, Kan. He is vice president of a mortgage banking firm. Their children are Shannon, Eric and Daniel.

**Dr. Lawrence Christensen**, associate professor of history at the University of Missouri-Rolla, has been selected as UMR's honor lecturer for Mid-America State Universities Association (MASUA) for the 1982-83 academic year. As an honor lecturer, Christensen will present lectures and seminars at other campuses in the association, which includes universities in Iowa, Missouri, Nebraska, Kansas and Oklahoma.

**Paul R. Vogt** and wife, Donna, live in Webster Groves, Mo. He is office manager at Ernst and Whinney CPA firm, and she is a registered nurse at St. Johns Mercy Hospital. Their children are Joseph, Daniel, Jeanne, Matthew, Linda, Julie, John, Kathleen, Ellen and Ann.

**Janet B. Yates Ales** and husband, Gerald, are living in Davenport, Iowa. She teaches 4th, 5th, and 6th grade art at Perry and Buffalo (Iowa) Elementary Schools. Both schools are in Davenport School District. Gerald is a technician for Western Electric, Davenport.

**Dr. Lyle E. Boyles**, wife, Martha, and son Michael, live in Augusta, Kan., where he is superintendent of schools and she is with the loan department of Prairie State Bank.

**Vera Small** and husband, Len, live in Lancaster, Mo. She is a retired teacher and he is self-employed.

**Emily Manlove Smith** and husband, Quentin, of Rothville, Mo., are retired.

**Richard Dutton** of Ottumwa, Iowa recently completed a mural that hangs in the Iowa State Bank at Fort Madison, Iowa. The mural shows the history of Fort Madison and was executed in acrylic on five panels totalling 85 feet in length. Mr. Dutton is an instructor of the visual performing arts series at Indian Hills Community College. He and his wife, Karen, have two children, Kathie and Brett.

**Rex G. Hardman**, D.O., of Kirksville, was recently elected chief of staff of Grim-Smith Hospital in Kirksville.

**John W. Hopkins** and wife, Joyce, live in Glendale, Ariz. He is a real estate broker and she is a home economics teacher. Their children are Diana and Richard.

**Robert Harris** and wife, **Mary Dee Ellis Harris 1968**, are living in Centralia, Mo., where he is assistant

superintendent of schools and she is a teacher. Their daughter, Laura, is a freshman at NMSU.

**Louis Biggs Schofield** retired teacher, and husband, John, live in Brookfield, Mo. They have two children, John and Mary.

### '61

**Dr. Kenneth W. Henry**, wife, Elsie, and son, Joseph, live in Livermore, Calif. He is on the technical staff at Sandia National Laboratory in Livermore. She is a registered nurse at Valley Memorial Hospital.

**Paul A. Ricker**, Moberly, Mo., is superintendent of Moberly Public Schools. He and his wife, Dolores, have three children, Paula, Mike and Scott.

**John S. Carter**, wife, Georganna, and daughter, Erica, are living in Washington, Mo. He is a physical education teacher and assistant football coach at Washington High School, and she is a sixth grade teacher.

**Reva G. Cook**, St. Louis, Mo., is librarian at Le Roy F. Koch Elementary School, Riverview Gardens School District.

**Vermont Follett, Jr.** and wife, Mary, live in Tucson, Ariz. He is a science teacher at Catalina High School, and she is a salesperson at Diamond's Department Store. They have two children, Mark and Mary.

**Dr. Charles C. Gerleman** and wife, Dorothy, live in Milan, Ill. He is a self-employed chiropractor. Their children are Teresa, Diane, Dennis, Patricia, Donna and Mark.

**Dolores J. Tracy Thompson** and husband, James, live in Saratoga, Calif. She is a private school substitute teacher and he is a pilot for Pan American World Airways. They have two daughters, Lisa and Barbara.

**John D. Williams** and wife, **Doris McClymonds Williams 1963**, live in New Virginia, Iowa, where they own a retail grocery. Their children are Shawn, Toni and Kurtis.

**Jack L. Stubblefield**, Des Moines, Iowa, is an account executive for Firestone Tire and Rubber Company. He and his wife, Carla, have three sons, Frank, James and Bradley.

**Mary Anne Smith Kemper**, husband, Charles H. Kemper, Jr., and children, Caroline and Timothy, are living in Troy, Mo. She is an elementary music teacher and music department head at Troy III Schools. He is also a teacher.

**Mary Atkinson Lewis** and husband, Jerry, are living in Great Lakes, Ill. She is a substitute teacher and he is in the U.S. Navy. They have three sons, David, Christopher and Eric.

## Division Update: Home Economics

# Washington intern learning consumer tips first-hand

When senior Kerri Calvert buys a car, she is going to know what a "good deal" really is, just as she will if she hires a contractor to pave her front sidewalk. She terms this "consumer education" and has learned its importance while serving an internship this semester in Washington, D.C., at the Office of Consumer Affairs, Division of Health and Human Services.

"A consumer has to be on his toes now," the home economics family and consumer finance major says. From inquiries to state consumer offices recently, she found that a majority point to home repairs as the biggest area of consumer rip-offs. An example of this, she says, would be a pavement that breaks apart two days after it is laid or a repairman who claims a furnace will explode if it is not fixed soon.

There is an organization to investigate almost any area of consumer inquiry, but people must take action and seek information themselves. "The big stress right now with Ronald Reagan's administration is to go to states rather than the federal government for advice," Calvert says.

With the federal cutbacks, response to consumer inquiries is being weighted toward state and industry organizations. The state government offices have felt the effect of this thrust for the last 1 1/2 years, she says, and "we are hoping industry takes over responsibly."

Consumer education is a big concern in her office, Calvert says. Much of her time during February and March was spent contacting people, including mayors, governors and senators, about National

Consumers Week. "We're trying to get private industry and consumers to know about each other."

Calvert says she has really become aware of how much there is to know about products and services, although she realizes "you can't know everything." Still, "the internship is giving me a grasp of what consumerism is all about," she says. It is also opening her eyes to the political system and how to work in bureaucracy.

The Washington, D.C., internship was an opportunity that arose through contacts the Home Economics Division made. Calvert's NMSU supervisor, Charlotte Revelle (associate professor of home economics), says the division attempts to match students with an internship, "in the type of thing that will help them when they graduate."

**Bernice Adams Neubauer**, husband, Don, and children, Nancy and Danny, live in Parkville, Mo.

**William H. Allen**, Manhattan Beach, Calif., is retired.

**Juanita Hediger** of Greentop, Mo., retired in May 1981 from Kirksville Upper Elementary School, where she was a fifth grade remedial reading teacher.

**Katty Irani Scaccia**, husband, Joseph, and sons, Thomas and Cyrus, live in Tempe, Ariz. She is a first grade teacher, and he is a media consultant, Arizona State Library Services.

'62

**Dr. Lanny C. Morley** and wife, **Clara Fisher Morley 1963**, of Kirksville, are the parents of a son, John David, born Sept. 30, 1981. They have two other children, both daughters, Sara, 17, and Tricia, 13. Dr. Morley is a professor of mathematics at NMSU.

**Joann Burch Rhoades**, Boonville, Mo., is director of elementary education, Boonville Schools. She has two daughters, **Liellen Richardson 1970** and Saralyn McKenzie.

**Jerry D. Curley**, St. Joseph, Mo., is vice president of the Commerce Bank Real Estate Department. He and his wife, **Shirley Spickard Curley 1963**, have a son, Michael.

**Millard Conover**, Mesa, Ariz., is head of the mathematics department at Westwood High School and is on the visiting staff at Mesa Junior College.

**Helen C. Rallita Alexander** and husband, William, are living in Moberly, Mo. She is a fifth grade teacher at West Park School and he is a bulldozer operator. Their children are Kevin, Patsy and John.

**Jerry C. Noble**, wife, Joyce, and children, Chris and Cathy, live in Overland Park, Kan. He is general manager, charcoal division, Standard Milling Company, and she is a school administrator.

**Rex L. Eiffert**, Ukiah, Calif., is an assistant principal, adult education. He and his wife, Sylvia, an elementary teacher, have two children, Matt and Heather.

**Gary Ferguson**, Trenton, Mo., is head football coach at Trenton High School. He and his wife, Connie, have three children, Denise, Dana, and Brandon.

**Lois J. Barnett** and husband, **Harold L. Barnett 1970**, retired from teaching in May of 1981. She taught for 30 years, the past 15 years working in the Title I remedial program in Kirksville R-III School District. Mr. Barnett taught for 21 years, the past two years at Kirksville Vocational-Technical School.

**Betty J. Hammond Lehr** and husband, Robert, are living in Altus, Okla. She is a physical education teacher at Washington and Wilson Elementary Schools. He is retired from the Air Force and is now a service representative, Pitney Bowes. Their children are Jay, Jana, Dena and Tara.

**Patricia A. Swann**, Schertz, Texas, is a computer programmer/analyst.

**Howard L. Rowe**, Carlsbad, Calif., is a teacher. He and his wife, Johanna, have a daughter, Kristine.

**Rosemarie Grillo Tirpak**, husband, John A. Tirpak, D.O., and sons, John, and Charles, live in Aliquippa, Pa. She teaches the socially and emotionally disturbed and learning disabled and also is an insurance agent and is in real estate sales. Dr. Tirpak is a radiologist and has a family practice.

**Dr. Edwin L. Smith**, wife, **Janet Davidson Smith**, and children, Tracy and Carrie, live in Cape Girardeau, Mo. He is a professor of art at Southeast Missouri State University, and she is a clerk at Famous Barr.

**Dr. Robert G. White**, Barbara, and children, Brian and Jason, live in Bozeman, Mont. He is leader of the Montana Cooperative Fishery Research Unit and is an adjunct associate professor at Montana State University. Mrs. White is an assistant professor of home economics, also at MSU.

**Robert J. Jerman**, Centralia, Mo., is a manager of Cost Control, Manufacturing and engineering. He and his wife, Marilyn, a secretary, have two children, Glenda and Rob.

**Dr. Walter R. Johnson**, wife, **Parvaneh Shaghafi Johnson**, and children, Dawn and Drew, are living in Enid, Okla. He is an assistant professor of history at Phillips University in Enid, and she teaches at Waller Junior High School, Enid.

**Mary Jo Reed Daggett** and husband, Dr. Robert C. Daggett, live in Sandston, Va. He is an optometrist.

**Joseph A. Branham**, wife, Mary Sue, and sons, Charley and Nick, live in Paris, Mo. He is a junior high principal and she is a school bus supervisor.

**Don Howerton** and wife, Clara, live in Liberty, Mo. He is home school coordinator, Liberty Junior High School Special Services, and she is a second grade teacher. Their children are Deborah, Sheila and Jeff.

**Nadine Farson Waddill**, husband, Deon, and daughters, Renae and Charlyn, live in Brookfield, Mo., where she is a second grade teacher. Mr. Waddill is a counter salesman, Rupp Automotive.

**Dr. Lynn J. Wolfmeyer**, Macomb, Ill., is an assistant professor of mathematics at Western Illinois University. He and his wife, Mary, have two children, Mary Anne and Mark.

**Janet Dubberke Uskudarli** and husband, **David Uskudarli 1964**, are living in Istanbul, Turkey. He is financial and administrative manager, Cibagey in Istanbul, and she is a teacher. They have two children, Susan and Michael. Susan is a student at NMSU.

**Donald R. Wescott** and wife, Anita, live in St. Charles, Mo., where he is a social studies teacher and department chairman at Francis Howell High School. She is a unit secretary at St. Joseph Hospital. Their children are Rebecca, Kimberly, Valerie and Jennifer.

**Sandra Dewey Baird**, husband, Thomas, and children, Thomas Jr. and Brooke, are living in Dallas, Texas. Mr. Baird was recently appointed general agent for the Dallas office, Acacia Mutual Life Insurance Company of Washington, D.C.

**Glenn C. Hinders** and wife, Elinor, live in Eldora, Iowa. He is a high school guidance counselor at Eldora-New Providence Community Schools in Eldora. She is an optometric assistant. Their children are Teresa, Keith and Steven.

'63

**Robert E. Burns**, retired, lives in Des Moines, Iowa.

**Virginia Bowen Johnson** and husband, George, live in Huntsville, Mo. She is a language arts teacher and he is retired. They have two children **Robert A. Johnson 1964** and Ginger Lou Johnson.

**Larry G. Tate** and wife, Patricia, live in Fenton, Mo. He is a science teacher at Lindbergh High School and she is a secretary. Their children are Lori, Brian and Michael. Lori was awarded a Regents Scholarship from NMSU and began her freshman year in September 1981.

**Robert D. Gibbs**, wife, Nancy, and children, Wendy and Jason, are living in Old Monroe, Mo. He is vice president of Management, Information and Distribution at Wohl Shoe Company (member of Brown Group, Inc.). Nancy is an elementary teacher, Fort Zumwalt School District.

**Ann Porter Gifford**, husband, Robert Gifford, Jr., and sons, Robert and Tim, live in Cape Girardeau, Mo., where he is director of bands at Southeast Missouri State University.

**Paul W. Miller**, Davenport, Iowa, is a computer operator. He had previously taught English and German for 15 years.

**Gary R. Wishmeyer**, Indianapolis, Ind., is a band director at Ben Davis High School. His wife, Mary Beth, is a secretary and music teacher.

**Larry E. Sage** and wife, Marilyn, live in Independence, Mo. He is a stock broker and she is a secretary. Their children are Lisa and Scott.

**Sandra Ables Kondrick**, husband, James, and sons Christopher Title and Jonathan Title, live in Edina, Minn. Mr. Kondrick is a writer.

**Ronald G. Hunt**, wife, **Cheryl A. Hunt 1971**, and daughters, Melissa and Jennifer, live in Unionville, Mo. He is a middle school principal, and she is a third grade teacher.

**Richard V. Nelson**, Pasadena, Calif., is associate director of graphics, CBS Sports-NFL football and NBA basketball. He previously taught physical education for 17½ years at North Hollywood Junior High and coached football for seven years at North Hollywood High School. He and his wife, Joanna, have four children, Brett, Kelly, Christian and Lesley.

**Dr. John N. Dinsmore**, wife, Julie, and children, Britton and Alexandra, live in Kearney, Neb., where he is a professor of art at Kearney State College. Mrs. Dinsmore is area director, American Red Cross.

**Georgia M. Humphrey**, Orange, Calif., is a teacher. Her husband, Joe, is retired.

**Anna Joyce Haley Smith**, husband, Billy, and daughter, Catherine, live in Madison, Mo. She is on leave of absence from Moberly Public Schools, engaged in farming with her husband.

**Lucretia Wolf Morrison**, husband, Graham, and sons, Greg and Scott, are living in Englewood, Colo. She is a substitute teacher and he is a regional manager, General Mills.

**Mary Lee Green Noel**, husband, Larry K. Noel, D.O., and sons Kent and Lance, live in Moberly, Mo., where he is in general practice.

**Russell N. Trainer**, Tempe, Ariz., is a salesman for Westinghouse. He and his wife, Joyce, have three children, Russell, Andy and Sondi.

**Edward L. Shepler**, wife, Billie Sue, and children, Lee Ann and Mikel, live in Rio Hondo, Texas. He is owner of a used car lot, liquor store, western wear store and barber shop. Mrs. Shepler is a barber.

**Terry M. Hall**, Waukesha, Wis., is manager of distributor training at Miller Brewing Company. He and his wife, Rhonda, have five children, Teana, Debbie, David, Daniel and Aaron.

**Marcia Kimball Schuette**, husband Glenn, and children Scott and Kimberly, are living in Jensen, Mich. She is a high school teacher in Grand Rapids, Mich., and he is a programmer/analyst.

**Kenneth A. Costa**, wife, Judith, and children, Nathan, Kuupua, Mike, John and Steven, live in Castro Valley, Calif. He is a resource teacher, Castro Valley Unified School District, and she also teaches.

**D. Arlene Graham Fox**, New Sharon, Iowa, is a retired junior high reading teacher. She retired in 1977 after a total of 34 years teaching.

**Brenda Bowling Krueger**, husband, **Ron Krueger 1965**, and son, Kurt, live in Ellisville, Mo. Both are physical education teachers, Rockwood School District.

**Mary Ellen Smith Small**, husband, Richard, and sons, Richard and David, are living in Milton, Iowa, where she is a secondary special education teacher. He is a welder.

**Joan C. Case Fecht**, husband, Larry, and children, Andy and Lisa, live in Mexico, Mo., where she teaches second grade at Eugene Field School. He is a machinist at Kaiser Refractories.

**David A. Rae**, wife, **Nancy Spurgeon Rae 1965**, and sons, Steven and Michael, live in Salisbury, Mo. He is training coordinator, Associated Electric Cooperative, Inc., Thomas Hill, Mo. She is a teller at Salisbury Mercantile Bank.

**Mary Jane Cox Carson** and husband, Derald, live in Jamaica, Iowa. She is a middle school social studies and reading teacher at Panora-Linden Community School, Panora, Iowa, and he farms. They have a son, Allen, presently in the USAF.

**Dr. Larry M. Doyle**, St. Peters, Mo., is superintendent of schools, Fort Zumwalt School District, St. Charles County.

**William H. Purdy, Jr.**, wife, **Sandra Siefert Purdy**, and children Stephanie, Patti and Elizabeth, live in Glenside, Pa. He is assistant manager, Pennsylvania Liquor Control Board-state store, and she is a physics and chemistry teacher.

**Norton and Carolyn Brown Bohon** and daughter, Ellen, live in Moraga, Calif. He is a seventh and eighth grade practical arts and science teacher and she is a Spanish teacher.

**Jerald Mason**, Rocheport, Mo., former property supervisor, has been promoted to staff assistant for Property and Casualty Product Development of Shelter Insurance Companies, Columbia, Mo. He is married to the former Beth Hawkins.

Division Update: Language and Literature

Instructors to challenge students with higher expectations

What do you do when a senior English major with above a 3.50 grade point average only scores at the 44th percentile on the senior test? What steps do you take if 56 percent of the rest of the seniors (who average about a 3.0 GPA) also score below the 50th percentile?

Well, you make some changes! Dr. Edwin Carpenter, head of the Division of Language and Literature, said the division has tightened the curriculum in most major areas over the last few months. And other steps, such as more emphasis on writing and reading, are being added in the months to come. The overall effect, he hopes, will be to challenge the best students to really learn.

"We were not pushing some of the good kids," he said. "We weren't asking them to use what they

were capable of using."

Part of the reason students were not performing as well on their senior tests as their GPAs would indicate they should is a slackening of curriculum standards in recent years. In some cases, enrollment pressures caused administrators and faculty to allow more course substitutions. Rather than prevent a student from graduating, many decisions were made that may not have really been in the student's best interest, Carpenter said.

Closer supervision of advisees is one way the division hopes to prevent this problem in the future. A new student entering the division will be told what courses he or she will need to take, and when to take them. In that way, the students will know what to expect from their NMSU education. In addition,

many instructors will be enforcing more rigid standards in their classes.

"The faculty will be offering experiences that will force them (the students) to grow. Expectations in individual courses are going up," Carpenter said. "The level of a student's achievement is often directly related to the instructor's level of expectation."

A final step involves convincing the students that senior tests, although not required for graduation, really do matter. Carpenter said the test scores affect division funding, job placement and curriculum requirements. It is going to be increasingly important for seniors to take the tests seriously, Carpenter said.

"Sometimes it's not just a curriculum change—it's an attitude change," he said.

## 20 Alumni Notes

**Roy F. Lewis** and wife, Cleta, live in Coolidge, Ariz. He is a high school counselor and she is self-employed. They have two children, Michelle and Tim.

**Gary D. Epperly**, wife, Phyllis, and children, Jodi and Carrie, live in Austin, Texas. He is vice president of sales and marketing, R. John, Ltd., and she is an auditor, I.R.S.

**Jimmie Cornelius, Sr.**, Oklahoma City, Okla., is a teacher. He and his wife, Luella, a registered nurse, have four children, Lisa, Tamara, Jimmie Jr., and Larry.

**Albert Cocannouer** and wife, Marie, live in Houston, Texas. He is director of youth guidance for Youth for Christ of Greater Houston. Marie is senior office manager, ACACIA Group Insurance. They have two daughters, Leysha and Lenita.

### '65

**Charles A. (Andy) Ruitcel**, Des Moines, Iowa, is a sales engineer with Dico Company.

**Lloyd R. Deahl**, Fayette, Mo., is a salesman with Princeton Industries, a fund raising company. He and his wife, Kay, have three children, Melissa, Chad and Carrie.

**Genanne Eric Davis**, husband, Jay, and sons, Brian and Gregory, are living in Agoura, Calif. She is an instructor at Pierce Community College in Woodland Hills, Calif., and he is principal of Sellery School for the Physically Handicapped.

**Sandra Rule Terhune** is an English teacher in Dora, Mo.

**Janet Hutchison Hunt**, owner of Pickel Abstract Company in Kirksville, was named Woman of the Year by the American Business Women's Association. She and her husband, Councilman Steve Hunt, have three daughters, Kelly, Liz and Linda.

**Ruby G. Gardner**, Kirksville, retired from teaching in May 1981. She taught at Willard Elementary School in Kirksville.

**Clyde R. Lincoln** and wife, **Velma Clawson Lincoln** 1965, are living in Omaha, Neb. He is a social studies teacher at Omaha Central High School, and she teaches second grade at Mount View School. They have two sons, Lloyd Elliott and David Lincoln.

**F. W. Mullenbore** and wife, **Dorothy Heathman Mullenbore**, of Paris, Mo., are retired. They have two sons, Jimmie and Ronald.

**Nick Quinn**, Kingwood, Texas, is president of Specialized Marketing Services, Inc. He and his wife, Sheri, have three children, Cari, Mark and Todd.

**Mary K. Streett Riddle**, husband, **Donald R. Riddle, Sr.** 1966, and children, Michele and Donald, are living in Brunswick, Mo. She is a first grade teacher and he teaches K-12, both in Brunswick R-II School.

**Karen E. Gross Rockwood**, husband, **Edward E. Rockwood, D.O.**, and sons, James, Jonathan and Jason, live in Tyler, Texas. Dr. Rockwood is an orthopedic surgeon. Mrs. Rockwood raises chinchillas and is a volunteer elementary teacher's aide.

**Robert J. Ronchetto**, Walnut, Calif., is vice president and executive officer, commercial loan center officer, Security Pacific National Bank, Los Angeles. He and his wife, Toyo, have one child, Akiko.

**Norman L. Sharp**, Durango, Colo., is director of employee relations at Mercy Medical Center. He and his wife, Peggy, a secretary, have two children, Tracie and Todd.

**Linda Dykes Holmes**, husband, **Phillip A. Holmes** 1966, and sons, Paul, Mark and Seth, live in Princeton, Mo., where she is a COE teacher and he is principal of American Bank of Princeton.

**Garry Miley** and wife, **Deitra Rouse Miley** 1971, of Kirksville, are the parents of a daughter born April 29, 1981. She has been named Kathryn Irene. The Mileys have one other daughter, Kristi Lynn.

**James D. King**, wife, **Dianne Moffitt King** 1968, and children, Jamie and Nathan, live in Macon, Mo. He is elementary principal and she is head of the business education department, Macon Schools.

**W. Tom Kelly**, wife, Shirley, and children, Kristine, Kimberly and Mark, are living in Clinton, Iowa, where he is president of Kelly Heating and Oil Company.

**Norma L. McBride Reynolds**, husband, Carl, and son, Darren, live in rural Centralia, Mo., where they farm.

**Susan K. Rolls**, Russellville, Mo., is a staff development specialist for Missouri Division of Family Services.

**Joyce A. Ewing Williams**, husband, **Dr. Robert D. Williams** 1968, and children, Christian and Todd, are living in Ottumwa, Iowa. She is a special education consultant and work experience instructor and he is supervisor of audiology, both for Southern Prairie Area Education Agency.

**Ernest F. Keller**, Ft. Worth, Texas, is drafting supervisor, Brown and Root, Inc., of Glen Rose, Texas, a nuclear power plant. He and his wife, Karen, have three sons, Paul, Mark and David.

## Walsworth Publishing names '71 grad as 'Sales Rep of the Year'



**Wally Malins**

Walsworth Publishing Company, the largest independent yearbook publisher in the world, named 1971 NMSU graduate, Wally Malins, "Sales Representative of the Year" at its annual sales meeting Dec. 14-17 in Las Vegas, Nev.

Originally a physical education major, Malins has been the northeast Missouri regional sales manager with Walsworth for eight years and has consistently been one of the top 10 salesmen in volume. His contacts include the NMSU yearbook, Echo, which in 1980 was one of the top two books in the nation. Malins said the Echo was "the highest award publication we've ever published."

NMSU helped him in his current position, Malins said, in "meeting people, learning how to talk and how to reason and associate with people, Kirksville is an excellent school for that." His educational background and the relationships established at NMSU assist him in his work with the school and its people.

Echo adviser, Debra ShROUT, described Malins as "joyful, good-natured, travels a lot,

wheeler-dealer." She said he works closely with the yearbook staff in negotiating contracts, providing options on layouts and proof sheets, supplying materials and informing them about discount rates.

The award Malins received was based on customer service, production ease, sales volume, territory coverage, deadlines met, company promotion, renewal percentage, small number of delinquent accounts and attitude toward and cooperation with the plant.

Walsworth Publishing Company is family-owned and operates in 50 states and 38 foreign countries. It is primarily a publisher of high school, college and university yearbooks, but it also prints cruise books for the U.S. Navy and recruitment publications for many military training installations.

### '66

**M. Isabel Barker Boatman** and husband, Jack, live in Bloomfield, Iowa. She is a fifth grade mathematics teacher and he is a barber stylist. They have four sons, Dr. Dennis Boatman, Dr. Douglas Boatman, Michael Boatman and Jack Boatman.

**Ellis Delameter**, wife, **Marilyn Allen Delameter** 1967, and son, Trent, live in El Toro, Calif. He is project coordinator, Rauh Engineering Company, Costa Mesa, Calif. She is a high school English instructor.

**JoAnne Cleaver Nash**, Moberly, Mo., is a third grade teacher at South Park School in Moberly. She has two daughters, Faith and April.

**Jaunett Switzer Neighbors**, husband, Warren, and children, Warren III and Tonessa, live in Rustburg, Va. She is an assistant professor in the business division at Central Virginia Community College in Lynchburg, Va.

**Robert L. Vander Linden**, Ankeny, Iowa, is a teacher and coach at Lincoln High School in Des Moines. He and his wife, Louise, have four children, Deb, Mark, Tom and Rob.

**James R. Struttman** of Hannibal, Mo., was recently named director of the Hannibal Regional Center. He has been with the Center for nearly seven years and was named acting director April 8, 1981. He and his wife, **Joyce Spurling Struttman** 1972, are the parents of four children.

**Albert Rostello** and wife, Hazel, live in Spring Valley, Ill. He is an instructor of western civilization and sociology at Illinois Valley Community College, and she is an artist.

**Dr. Larry Quisenberry** was recently named principal of Platte County R-3 High School in Platte City, Mo. His wife, **Dr. Sharron Bailey Quisenberry**, is an Extension entomologist for Iowa State University.

**Sherrie Sattman Wills** and husband, **George Wills** 1967, are living in New Boston, Mo. He is divisional sales manager for Walnut Groves Products, a division of W.R. Grace Company.

**Terrence E. Hawkins, D.O.** recently became associated with Kirksville Osteopathic Health Center in the practice of ophthalmology.

**Melvin R. McCollum**, St. Louis, Mo., is president of Computerized Medical Systems, Inc. He and his wife, Hazel, have two children, Melvin and Tamara.

**Pansy Mills Lawrence** and husband, Ernest, live in Novinger, Mo. She teaches first grade at Putnam County R-I School in Unionville and he farms. They have twin children, Dale Lawrence and Dorothy Lawrence, Reichert.

**Leonard N. Hyman**, St. Louis, Mo., is a science teacher.

**Victor Hoffman** of Kirksville, received the Ph.D. from the University of Iowa in 1981. He is a chemistry instructor at NMSU.

**Louise Perry Grayson** and husband, Glenn, live in Richardson, Texas. She is owner/operator of Rent a Car Company, and he is a traffic engineer.

**Rodney G. Staggs** and wife, **Rhonda Weiler Staggs** 1975, of O'Fallon, Mo., are the parents of a daughter, Shelby Lynn, born July 6, 1981. They have one other daughter, Shayna.

## Division Update: Libraries and Museums

### Pickler Library: the late-night place to be?

"I Love the Nightlife" could have been the theme song for many NMSU students last semester, but instead of discos, they wanted to stay until midnight at Pickler Memorial Library. The library, however, had decreased its hours to cut back costs, and thereby cut back on the way and the place many students spend their evenings.

A reduction in library costs was sought when budget provisions could not support several financial realities. Director of PML, George Hartje, said, "Statistics showed that the number of Work-Study hours were to be reduced 70 percent over the next three years." Work-Study wages increased from \$3.10 an hour to \$3.35 an hour in the past year. This

combination caused a library staff decrease, when actually more workers were needed due to increased circulation use, Hartje said.

After looking at the lowest percentage of use, the library was closed at 10 p.m. Sundays through Thursdays. It opened one-half hour earlier on Sundays, and a professional librarian was available one-half hour longer every night, Hartje said.

Nocturnal studies were provided for when the Student Senate coordinated a study hall in 106 Laughlin Building from 10 p.m. to midnight Sundays through Thursdays to counter the closure at those times.

During the time the library was open, however, stacks of books behind the circulation desk became a familiar sight. Since the library was understaffed, those books being used could not be reshelved as quickly or consistently.

The turning point of all of this, Hartje said, was the visit by the National Council of Accreditation for Teacher Education on Nov. 16-18, 1981. "NCATE suggested it stay open longer hours," he said. After evaluation, "the administration found money for the student-assisted budget."

So, after almost a semester of conflict, the reshelving problems have cleared up and students are no longer held in limbo with their nightlife—PML is open until midnight.

**Betty Seamster Thompson**, husband, John, and children, Beth, Jeanette and Al, live in rural Tebbetts, Mo. She is a secretary-bookkeeper for Wolf, Buehler and Bates, CPA's in Jefferson City. He is a maintenance mechanic for Westinghouse.

**Donald Shimabukuro**, wife, Grace Kuo Shimabukuro 1967, and son, Kendall, live in Kahului, Hawaii. Both are teachers.

**Delma M. Smith** and husband, Floyd, of Centerville, Iowa, are retired.

**Danny G. Rudicil**, wife, Janice, and children, Lori and Curtis, are living in Memphis, Mo. He is a mathematics teacher and she is a R.N. student at Southeastern Community College, Keokuk, Iowa.

**Donald L. and Alison Watson Ewing** and children, Christopher and Shawn, are living in Prineville, Ore. He is manager of production planning for OR and CA remanufacturing plants of American Forest Products Company. She is a substitute teacher.

**J.R. Downen**, wife, Mary Elizabeth, and children, Twila and Roger, are living in Ava, Mo. He is in maintenance with Emerson Electric.

**W. Hadley Hoyt III, D.O.**, recently joined the Kirksville Osteopathic Health Clinic as a resident in the ENT Department. He and his wife **Anita Gatlin Hoyt 1968**, and children, Cord and Tiffany, are living in Kirksville.

**Nancy Baldwin Maack**, husband, William, and daughters, Nikki and Jennifer, live in Overland Park, Kan. She is a teacher and he is owner/manager of 4 Day Tire Store.

**Harry H. Harmes**, wife, Kaye Stallman Harmes 1967, and daughter, Holly, are living in Rolla, Mo. He is a biology teacher and she is a counselor, both at Rolla High School.

**John L. McFarland**, wife, Carole, and children, John and Christina, live in Osage Beach, Mo. He is an industrial arts department head and vocational instructor at School of the Osage, Lake of the Ozarks. Carole is a real estate broker.

**Doug O'Herron** and wife, Nancy, live in Aurora, Colo. He is owner of O'Herron Concrete Forming, and she is owner of The Thoughtfulness Company. Their children are Laura, Kelley and Kevin.

'67

**Mary Rigby Hackney**, husband, Robert Hackney, D.O., and children, Robert and Kristin, live in Ladysmith, Wis. Dr. Hackney is an internist-gastroenterologist.

**Carol J. Paris**, Bloomfield, Iowa, is an elementary teacher.

**Helen Turpin Gibler**, husband, Frank, and children, Kevin and Jenny, are living in Madison, Mo. She teaches at Holiday C-2 School and he is a machinist at A.B. Chance.

**Carol Lay Robertson**, husband, J. Allan-Robertson, D.O., and children, John and Tanya, are living in Waukegan, Ill. He is a general practitioner and she is an office worker in his clinic.

**Dr. Stephen Daniels**, wife, Sheila, and son, Scott, live in Brownsboro, Texas. He is an associate professor at the University of Texas in Tyler.

**Sharon Smith Hiltabidle**, husband, Terry Hiltabidle 1978, and children, Scott and Amy, live in Corydon, Iowa. She is a bookkeeper, Jay-Vee Food Stores, and he is sales and credit manager, Richard Oil Company, Humeston, Iowa.

**Roma L. Norris Durham** and husband, John, live in Colorado Springs, Colo. She is coordinator, Womanschool, Network, Colorado Springs, and he is in the U.S. Army.

**Thelma Brokaw Hess**, husband, Gary, and son, David, live in Corydon, Iowa. She is a former teacher and he is a high school librarian and audio visual director.

**Mary C. Reese** of Ontario, Calif., is announcing the adoption of a daughter on July 9, 1981. The baby, Omara Marie, was born May 1, 1981, in Taipei Taiwan.

**Enid Luse Coulter** and husband, Craig, of Centerville, Iowa, are retired. They have one son, Gary Coulter.

**Lonnie L. James**, wife, Sharon, and sons, Kevin, David and Mark, live in Monroe City, Mo., where he is a computer operator, Monroe City Diecasting Company. Sharon is a counselor at Monroe City R-1 High School.

**Joseph B. Cobb**, wife, Carolyn Jackson Cobb 1969, and sons, Nicolas and Erik, live in Hoehne, Colo. He is a school superintendent.

**Donald E. Atkinson**, Brooklyn, Iowa, is a teacher. He and his wife, Sheila, have two children, Tim and Angie.

**Donna DeJong Phelps**, husband, Edwin L. Phelps 1968, and children, Annette and Andrew, are living in Iowa City, Iowa. He is manager of personnel and employee relations at Louis Rich Company, West Liberty, Iowa.

**Margaret Crigler Francis**, retired mathematics teacher, lives in Farber, Mo. Her children are Howard, John, and Laura.

**David E. Rose**, Brighton, Colo., is an elementary principal. He and his wife, Wilma, have two children, Ryan and Shannon.

**Joe E. Schafer**, Downers Grove, Ill., is assistant officer in charge, plant protection and control, USDA. He and his wife, Beverly, a registered nurse, have two children, Lisa and James.

**Marjorie Reed Gleason** and husband, Earl, live in Kirksville, where he is owner and she is a part-time bookkeeper. Gleason Auto Parts Store. They have a son, Cole Gleason.

**Shirley Sheeder Staggs**, husband, John, and children, A. Melissa and J. Matthew, live in Belleville, Ill. She is a systems analyst at Laclede Gas Company, St. Louis, and he is a systems engineer at McDonnell Douglas, St. Louis.

**Dennis P. Carey**, wife, Patricia, and sons, Joshua and Jacob, are living in Oklahoma City, Okla. He is president and co-owner of Agape Industries.

**C. Benjan Miguel** and son, Joshua, live in Macon, Mo. She is a fourth grade teacher, Shelly County R-IV School District.

**Larry D. Strickler**, wife, Carolyn Golway Strickler 1968, and sons, Gary and Benjamin, live in Des Moines, Iowa. He is a teacher and she is a private tutor.

**Wallace J. Taylor**, Waterloo, Iowa, is elementary principal in Dunkerton, Iowa.

**John C. Parcell** of Joplin, Mo., was recently promoted to general manager of Shoney's Restaurant in Joplin. He has been with the restaurant a year and previously was with the McDonalds Restaurants in Joplin for five years. Mr. Parcell and his wife, **Gretchen Van Gorp Parcell 1968**, have two children.

**Margaret Ginther**, third grade teacher at Field School in Chillicothe, Mo., retired in May of 1981, after 14 years in Chillicothe R-2 schools. Mrs. Ginther began her teaching career in a one-room country school in Linn County and also taught at other schools in Linn County and Caldwell County. She and her husband, Lawrence, live in Chillicothe, and have three children, Jeanette Ginther Fuhr, Peggy Ginther Rush and David Ginther.

**Frederic A. McBurney**, Slater, Mo., is a lab technician with the Test Department, Santa Fe Railroad.

**Connie L. Allison Bergsto**, husband, John, and sons, Jason and Justin, are living in Anaheim, Calif. She is a teacher on leave from Las Vegas, Nev., and he is an electrical supervisor.

**Gerald W. Jones**, New London, Iowa, is a junior-senior high guidance counselor at Winfield-Mt. Union Community School, Winfield, Iowa. He and his wife, Sherry, a secretary, have two children, Brian and Angie.

**Dr. Jack James** and wife, **Anita Weeks James 1979**, are living in Kirksville. He is an instructor in the Practical Arts Division at NMSU, and she is in real estate sales.

**Marla Heitman McBride** and husband, William, live in Ridgecrest, Calif., where she teaches physical education and is girls varsity basketball coach at Burroughs High School. He is an engineer at the Naval Weapons Center in China Lake, Calif.

**Thomas F. Peters**, wife, Connie, and children, Anna and Kurt, are living in Richardson, Texas. He is a self-employed communications systems consultant, and she is assistant registrar at Richland College, Dallas, Texas.

**Richard E. Topping**, Carmel, Ind., is a region manager of government and specialty accounts, Thomas J. Lipton Inc. He and his wife, Bonnie, have two children, Brian and Regina.

**Mildred Spencer Shields** and husband, Patrick, live in Houston, Texas, where they own a retail business. They have two children, Marcia and Chris.

**Robert S. Brown**, wife, **Donna K. Crooks Brown 1968**, and sons, Scott and Marc, live in Pacific, Mo. He is a counselor, head basketball coach and assistant football coach, and she is a speech therapist, both at Meramec Valley R-3 Schools in Pacific.

**Paul D. Balcom**, Clinton, Iowa, is a district manager, Des Moines Register and Tribune. He and his wife, Connie, have two children, Andrea and Paul.

'68

**Richard E. Manning**, wife, Janet, and daughter, Nicole, are living in Wentzville, Mo. He is an associate high school principal and she teaches first grade in Troy, Mo.

**James L. Whiteside**, Boulder City, Nev., is a locomotive engineer for Union Pacific Railroad. He and his wife, Shawna, have two daughters, Heidi and Bridgett.

**Marilyn Holman Waite**, husband, Patrick, and sons, Brian and Robert, live in Novi, Mich. He is a pipefitter.

**Carolyn Santee Trueper**, husband, **Darold A. Trueper 1971**, and son, Trenton, live in Barrington, Ill. He is national sales manager, E. R. Moore Company, a division of Beatrice Foods.

**Leon Pendergrass**, wife, Elizabeth, and children, James and Laura, are living in Norwood, Mo., where he is superintendent of schools.

**Victor H. Kaylarian, D.O.**, Grimes, Iowa, is an associate professor of internal medicine at the University of Osteopathic Medicine and Health Sciences in Des Moines, Iowa.

**Gloria Scarff See**, husband, Jason, and children Julie, Jason, Josh and Jan, live in Silvis, Ill. She is a Shaklee supervisor and he is a welder at International Harvester and a barber.

**Dr. Daniel R. Menze**, Moberly, Mo., is a dentist. He and his wife, **Bernetta Phillips Menze 1973**, have two children, Scott and Michelle.

**Donald L. Harmon**, Mexico, Mo., is owner of Leisure Days, Inc. and owner of Easy Built A Frames.

**Doralee Ratliff**, Bevier, Mo., is a social studies teacher at Bevier High School.

**Karen Phelan**, Upland, Calif., is an elementary teacher. Her husband, Barney, is an internal revenue agent.

**John M. Crowell**, Arcadia, Calif., is an assistant branch manager, Ford Motor Credit Company.

**Dennis A. Chalupa**, Missouri City, Texas, is data processing manager with Petro-Tex Chemical Corporation. He and his wife, Louise, a physical therapist, have two children, Scott and Kristen.

**Tania Yeager Barnhart**, husband, Don, and daughter, Keli Jo, live in Kaiser, Mo. He is a chef.

**Susan Irick Herrin**, husband, Lynn, and children William and Elaine, are living in Mountain Grove, Mo. She is an elementary Title I mathematics teacher and he is a Life and Casualty Insurance salesman.

**Vaughn and Lana Jo Alfrey Hysinger** and sons, David and John, live in Los Altos Hills, Calif. He is director of international marketing at Four Phase Systems, Inc., and she is a computer designer.

**Elaine Edmundson Madsen**, husband, Bill, and son, Billy, are living in Carter Lake, Iowa. She is a fourth grade teacher in Council Bluffs School District, and he is sales manager with Tele Communications, Inc. Cable Company.

**Kimberly Robison Ahrens**, Hannibal, Mo., is an English teacher at Hannibal Junior and Senior High Schools. She and her husband Cliff, an attorney, have three children, Christopher, Joey and Ann.

**Gary C. Henderson** of Chattanooga, Tenn., recently received a masters degree in Religious Education-Christian School of Administration from Tennessee Temple University, Chattanooga.

Division Update: Mathematics

Computer majors find it's all in the name

What's in a name? Well, when it comes to the name of a major field of study, it could be the difference between getting inside a prospective employer's door and being ignored. That's one reason mathematics students may soon be able to obtain a computer science degree, rather than the current degree in mathematics with a computer science option.

"When employers ask our graduates if they have a degree in computer science, they will be able to say yes," Dr. Dale Woods, head of the Division of Mathematics, said. The proposed name change has been approved by the Faculty Senate and will go in-

to effect this fall if it gains the approval of the State Coordinating Board, Dean of Instruction Darrell Krueger and University President Charles McClain.

Making students more competitive in the job market is the main reason for the name change, which was originally suggested by one of NMSU's largest employers of computer science majors, the McDonnell Douglas Corporation, Woods said.

As for the job market, "right now everyone wants someone (in computer science)," Woods said. The number of students majoring in computer science would seem to verify this, increasing from 69 in 1979 to 113 in 1981. Woods believes the name

change will attract even more students to NMSU because "they will be able to look in the catalog and see that we offer a bachelor of science degree in computer science."

NMSU plans to accommodate the increasing numbers of computer science majors through the acquisition of microcomputers—30 by this fall and 60 by 1984.

Basically, however, the name is all that will really change from the existing program if the proposal is implemented. Woods said the curriculum would not undergo any major new changes, although it is updated continuously.

## 22 Alumni Notes

**Paul M. Stratton**, Salt Lake City, Utah, is an industrial education teacher. He and his wife, Roselyn, a medical secretary, have three children, Mark, Sharlene and Scott.

**Garth S. (Gary) Drennan**, wife, **Susan Gulnac Drennan 1969**, and daughters, Cara and Lindsay, live in Galena, Kan. He is on a year leave of absence from teaching to farm, and she is a speech therapist.

**James T. Pratt**, Murphysboro, Ill., is a merchandiser for K-Mart sporting goods. His wife, Laura, is a court reporter, state of Illinois.

**James Ragan** of Bismarck, N.D., was recently appointed chief of North Dakota Fisheries. He has been with the game and fish department since 1969. He and his wife, Marilyn, have three children.

**Bob Triplett** and wife, Annette, live in Overland Park, Kan., where he is librarian at Kansas City College and Bible School.

**S. Randall Roberts**, Lancaster Mo., is an educator in Schuyler R-I School District. He was recently nominated by the Schuyler CTA as an outstanding leader of the CTA.

### '69

**Susanne Nugent Neely**, assistant director of financial aid at NMSU, was recently presented the "Missouri Award" from the Missouri Association of Student Financial Aid Personnel. Mrs. Neely, her husband, **Rick Neely 1977**, and son, Brad, live in Kirksville.

**Leslie G. Guthrie**, wife, Phyllis, and daughter, Lisa, live in Thornton, Colo. He is a layout artist at Citron Printing, and she is a loan clerk at First National of Northglenn.

**Willis W. Peery**, Moberly, Mo., is assistant manager at Firestone Tire and Rubber Company in Moberly. He and his wife, Paula, have a daughter, Laura.

**Mickey Moore**, Roseville, Calif. is owner of Moore Accountancy Services. His wife, Pilar, is a sales representative.

**Lt. Mark C. Hayes**, U.S. Air Force, is serving at Adona, Turkey. His address is PSC Box 943, APO N.Y. 09289.

**David O. Erwin** and wife, **Kathy Chandler Erwin 1971**, of Brashear, Mo., are the parents of a daughter, Ashlee Ilene, born Oct. 28, 1981.

**Roger C. Feng**, wife, Sally, and sons, Gregory and Jeffrey, live in Northridge, Calif. He is in corporate financial reporting with MCAZNC in Universal City, Calif., and she is self-employed.

**Dennis M. Creegan** and wife, **Barbara James Creegan 1972**, live in San Perita, Texas. He teaches social studies and is a coach at San Perita High School, and she is an elementary teacher and coach, San Perita.

**Phyllis S. Domann**, Springfield, Mo., is an instructor, School of Business, Southwest Missouri State University.

**Gary and Ardrith Evans Spencer** and children, Armin and Erin, live in Valley Falls, Kan., where he is minister, First Christian Church.

**Frederick E. Vanderhoof**, wife, **Janice Rosser Vanderhoof 1972**, and son, Timothy, are living in Denville, N.J. He is board secretary/business administrator, Netcong (N.J.) Board of Education, and she is a library assistant, County College of Morris, Randolph, N.J.

**Gary L. Smoot** and wife, Amy, live in Highland, Calif. He is a systems accountant, San Bernardino County auditor-controller's office.

**George M. Taylor, Jr.**, Riverside, Calif., is assistant chief, social work services, Long Beach (Calif.) V.A. Hospital. He and his wife, Wanda, a vocational rehabilitation counselor, have a daughter, Andrea.

**Anita Morrow Broughton**, husband, Ernie, and children, E. Grayson and David, are living in Suisun City, Calif. She is a substitute teacher and he is a director of computer services.

**Monty L. Morgan**, Sanford, Fla., is art-designer for New Tribes Mission (taking the Bible to unreached tribal people world wide). He and his wife, Linda, have three children, Zachary, Nathan and Myles.

**Dr. Paul A. Wagner, Jr.** and wife, **Dr. Karen Seroka Wagner 1970**, are living in Webster, Texas. She is a research coordinator, Central Nervous System Trauma Center, at the University of Texas Medical School, and he is an assistant professor, Philosophy of Education, at the University of Texas. They have three children, Nicole, Eric and Jason.

**Brenda Berry Rose**, husband, Danny, and children, Matthew and Meghan, are living in Fulton, Mo. He is a lineman, Callaway Electric Co-op.

**Marilyn Crawford Cannaday**, Kansas City, Mo., recently joined the staff of NEW LETTERS, a literary quarterly published at the University of Missouri-Kansas City. Among other duties, she does promotional work for the magazine and its radio edition, NEW LETTERS ON THE AIR. A feature article on the radio program written by Ms. Cannaday was accepted by the KANSAS CITY STAR magazine, and is scheduled for publication this winter. Since 1978, Ms. Cannaday has published 15 feature articles in city magazines.

**Maxine Lancaster**, Memphis, Mo., was chosen the recipient of the Northeast Council International Reading Association Literacy Award for 1981. She is currently employed as Title I remedial reading teacher, grades 1-6, at Scotland County R-1, Memphis.

**Albert J. Guazzo**, Oakland, N.J., is supervisor and department chairman, physical education, driver education and health education, and coaches wrestling and football at Lakeland Regional High School, Wanauque, N.J. He and his wife, **Kathleen Forness Guazzo 1971**, have four children, Anthony, Dominic, Megan and Michael.

**Cecilia Frank Johnson**, husband, Daniela, and children, Darin, Vickie and Jeremy, live in West Burlington, Iowa. He is a supervisor at J. I. Case in Burlington.

**Robert E. Johnston**, Prophetstown, Ill., is executive vice president of Farmers National Bank. He and his wife, Jeralyn, have two children, Heidi and Brianna.

**Daniel W. Forgry**, wife, Faye, and children, Angela and Jason, live in Merriam, Kan. He is a partner in Settlemeyer, Forgry and Company, certified public accountant.

**Eleanor Wilson Burnette**, Newkirk, Okla., is retired after 20 years as a science teacher at Chillicothe Indian School. Her children are Merlin and Collin.

**Fred Kingsolver**, Sedalia, Mo., is president of Frederick D. Kingsolver, C.P.A. He and his wife, Pam, have two daughters, Stacey and Kristen.

**Diane Cushman Otten**, husband, William, and children, Melissa and Timothy, live in Ellisville, Mo. He is a consultant to physicians and dentists and she assists in his office.

**Joseph R. Miller**, Batavia, Iowa, is a material storage stocker at John Deere Ottumwa Works. He and his wife, Mary, have three children, Tonya, Joseph and Charles.

**Deborah Bohon Kelly**, husband, Lawrence (Buck) Kelly, and children, Molly and Erin, live in Brighton, Colo. She is a medical technologist at Brighton Community Hospital and he is an entertainer and flight instructor. Buck Kelly was featured in a recent segment of the "Today" show on television. The Kellys live in Vanaire, a suburb of Brighton, described as one of the most unique residential areas in the country. It has its own air strip and most homes have attached hangar space for two or three airplanes. There are 72 homes in the subdivision, many of them owned by pilots and airplane enthusiasts. Kelly, who is the Rocky Mountain aerobic champion, was shown on the "Today" show flying the Pitts which he and his brother built.

**Judith Deierling White** and husband, Capt. Dennis A. White, U.S. Army, live in Anniston, Ala. They have two daughters, Amanda and Alecia.

**Paul H. Johnston** and wife, Sharon, live in Webster City, Iowa, where he is a mathematics teacher and girls softball coach at the high school, and she is a junior high science teacher.

**Shirley Brookshier Cortez** and husband, Joe, live in Ft. Morgan, Colo. She is a teacher and he is a body shop owner/operator and also teaches.

**Gary L. Fowler**, Unionville, Mo., owns and operates a floor covering store. He and his wife, Deborah, have two children, Leslie Ann and Aaron.

**Dr. W. Harold Ornes**, Aiken, S.C., is a biology professor.

**Thomas Stuckey, Jr.**, wife, Cathy, and son, Thomas, are living in Monterey, Calif. He is a major in the U.S. Marine Corps, currently attending the Naval Post Graduate School in Monterey studying for a masters degree in electrical engineering.

**Linda L. Potts Greenwood**, Algonac, Mich., is a substitute teacher. She and her husband, Rod, a psychology teacher, have three children, Nicolle, Ryan and Aaron.

**Marie Fisher Hotle**, husband, **Daniel R. Hotle 1971**, and son, Jacob, live in East Moline, Ill. She is a second grade teacher and he is a manpower specialist, Job Service of Iowa.

**Vera Gomez Piper**, husband, **Fontaine Piper 1970**, and sons, Scott and Alejandro, are living in Kirksville. She is a part-time Spanish instructor and he is a physical education and recreation instructor, both at NMSU.

**Barbara Faust Neff**, husband, **Dr. George A. Neff 1970**, and son, Christopher, live in Marion, Iowa. He is a chiropractor and she is his assistant.

**James R. Roach**, Kersey, Colo., is elementary principal, Platte Valley School District, Kersey. He and his wife, Marjorie, have two children, James and Kelly Ann.

**Phyllis Feurly**, husband, **Tom Feurly 1971**, and children, Michelle and Michael, live in Seneca, Mo., where he is the new superintendent of Newton County R-VII Schools.

**Curtis L. Hines**, wife, Elinor, and daughter, Rayna, live in Waukegan, Ill. He is a dean for building services and she is in production work.

**Lexanna Johnson Lyons**, husband, Mack, and daughter, Andrea, live in Kankakee, Ill. She is an English teacher and he is an art teacher.

**Sandra Bartlett Farrell**, husband, **James T. Farrell, D.O.**, and children, Molly and Clayton, live in St. Charles, Mo.

**Lois E. Toedebusch Boeger**, husband, Richard, and children, Charity and Timothy, live in Warrenton, Mo. She is a substitute teacher and he is a security guard.

### '70

**Susan Taulbee Hornbeck**, husband, James, and son, Andy, are living in Hewitt, Texas. He is a Mobil Oil terminal supervisor.

**Beverly Golston Guinn**, husband, **Jerry L. Guinn 1975**, and daughter, Holly, are living in Bloomfield, Iowa. He is a farmer and a science teacher at Moulton (Iowa) High School. Beverly is a first grade teacher in Bloomfield.

**Richard D. Loe**, wife, Constance, and son, Bradley, live in New Britain, Pa. He is in management with Pitman-Moore Veterinarian Medicine, a subsidiary of Johnson and Johnson Pharmacy.

**Tana Fray Johnson**, husband, Kenneth, and children, Kerl and Kadi, live in Kansas City, Mo. She teaches third grade at Chouteau Elementary School in North Kansas City and he is chief, Kansas City (Mo.) Fire Department.

**Robert B. Heivilin** and wife, Jean, are living in Rockford, Ill. He is a high school science teacher and she is a clerk, Social Security Administration. Their children are James, Robin, Robert and Jonathon.

**Eleanor C. Skaggs**, Fairfield, Iowa, is an elementary teacher. She and her husband, Lyle, a real estate broker, have two children, Connie Skaggs Cannon and Richard Skaggs.

**Christopher B. Smith** and Nancy Small were married May 2, 1981. They are living in Alspis, Ill. He is an electrical engineer with General Telephone and Electronics, and she is a registered dietitian at South Chicago Community Hospital.

**Dennis L. Clermont**, wife, May, and sons, Matthew and Justin, live in St. Louis, Mo. He is a Bible teacher, counselor and administrator at Tower Grove Christian School. May is a substitute teacher.

**Dan Calhoun**, wife, **Ruth Ann Light Calhoun 1971**, and children, Lori and Craig, live in Pleasantville, Iowa. He is a guidance counselor and coach, and she is a fifth grade teacher.

**Sgt. Paul M. (Mike) Mulholland** was recently designated, Missouri, Highway Patrol zone commander of zone four in Jackson County. Sgt. Mulholland his wife, Katona, and son, Paul, live in Grain Valley, Mo.

**Pamela Baker Sylvara** has returned to Kirksville where she is teaching sixth grade at Upper Elementary School. Her children are John Tod, Tina and Jason Troy. John and Tina are students at NMSU.

Division Update: *Military Science*

# Outdoor 'classrooms' emphasized

Using the great outdoors for a classroom, the Military Science Division teaches important skills in leadership while giving students an opportunity to get away from traditional campus activities.

Captain David Mohnsen, assistant professor of military science, said the most popular excursions among students are canoe trips and teamwork expeditions.

One of those games, Mohnsen said, is "Escape Invasion," a game of "big kids' hide and seek" where the participants are made aware of the importance of group goals.

Students meet at Thousand Hills State Park,

where they are set up in teams with a mission to accomplish. They must travel from point A to point B across rough terrain and avoid being caught by a patrol.

If captured, they are taken by patrols to a prison camp, making at least one escape part of the five-hour ordeal. After several attempts, the fugitives finally reach their destination and the safety of a friendly camp.

Adventures offered by the division serve an important part of the military science courses. One-third of the grade that students taking the classes receive comes from these labs, Mohnsen said. The

other two-thirds are from classwork and student involvement in the community.

Canoe trips also qualify as labs. Canoeing the Current River twice in the fall and once in the spring, each trip is open to 100 students. Camping out two nights, students depend on each other for the cooking and other camping duties. "They must rely on each other to set up camp, and it becomes a great team effort. Everybody has a tremendous time," Mohnsen said.

The initial goal of these and other labs is to "challenge students to become better leaders," he said.

**Dale D. Cox, wife, Joan Cloyd Cox 1977**, and daughter, Teresa, live in Stotts City, Mo. He is a University of Missouri Extension youth specialist.

**Sandra Botham Lewis, R.N.**, husband, **Daniel A. Lewis 1975, D.O.**, and children, David, Amy, Matthew and Timothy, are living in Richland, Mo. Dr. Lewis recently became a practicing physician at the Central Ozarks Medical Center.

**John M. Uhl**, Dubuque, Iowa, is a speech clinician at Keystone Area Education Agency in Elkader, Iowa.

**Richard L. Theriault, D.O.**, recently became associated with Kirksville Osteopathic Health Center in the practice of general internal medicine and cancer medicine.

**Matt T. Le'i** of Pago Pago, American Samoa, is Director of the Territorial Energy Office. He was officially confirmed to this position on March 28, 1981, by the American Samoa Legislature. From June 1978 to Sept. 1978 Mr. Le'i served as Deputy Director and from Sept. 1979 to March 1981 was Acting Director pending the legislative confirmation of his appointment. The Territorial Energy Office was just being established when Mr. Le'i took the helm and he has since expanded the number of projects to the point where it was

necessary to increase to a staff of 13, with future expansion already charted and approved. He has brought the TEO from a virtually unknown entity to an organization of major importance to American Samoa. (Excerpted from ENETI, Samoa's Energy News.)

**Sharon Bang Ginther**, Davenport, Iowa, is a special education teacher. Her husband, Scott, is with Davenport Parks and Recreation.

**Cynthia Scearcie Stotler**, Jefferson City, Mo., is a registered nurse at Internal Medicine Consultants, Inc., Jefferson City.

**Jamie Grosso Brewer**, Lee's Summit, Mo., is a business teacher at Lee's Summit High School. Her husband, Vernon, is a salesman, Wayne Price Company, Overland Park, Kansas.

**Connie Cossey Schwartzburt**, St. Louis, Mo., is business manager of Neurological Medicine Inc. Her husband, Jack, is manager, college placement, McDonnell Douglas Corporation.

**Steve B. Hilkowitz** and wife, Marlene, live in Philadelphia, Pa. He is an attorney, U.S. Department of Defense, and she is a teacher in Philadelphia. They have two sons, Fred and Michael.

**Carolyn Wells Black**, husband, Larry, and children, Christina, Doran and Scott, live in Elsberry, Mo. She is a business teacher and he is a welder.

**Linda Miller**, Dearborn, Mich., is quality control superintendent for seven plant sections at Ford Motor Company's Dearborn Engine Plant. She supervises more than 100 quality control employees.

**Margaret Singleterry Henry** and husband, Wendell, are living in Daytona Beach, Fla. She is a free-lance artist and he is retired.

**Gary A. Derby**, Davenport, Iowa, graduated in December 1981 from Palmer School of Chiropractic. He and his wife, Melodee, have two daughters, Jodi and Jessica.

**Larry D. Jones, wife, Linda Maxwell Jones 1971**, and sons, Ken and Doug, live in Jefferson City, Mo. He is director of the prevention of mental retardation, Missouri Division of Health. Linda is with Southwestern Insurance Information Service.

**Walter L. Staude**, Woodrow, Colo., is a mathematics teacher and his wife, Sharon, is a fourth grade teacher, both in Woodlin School District, Woodrow.

**Carolyn Riley Umphress**, husband, Tom, and daughter, Megan, live in

Conway, Ark., where she is a fourth grade teacher at Julia Moore Elementary School. Mr. Umphress is a psychologist.

**David M. Schebell**, Coos Bay, Ore., is a teacher, Coos Bay School District.

**Barry and Janice Gentle** and daughter, Dawnelle, are living in Centertown, Mo. She is deputy executive assistant to Governor Bond, and he is production planning manager, Chesbrough Ponds Inc.

**Nancy M. Lewis Moshtaghi**, husband, Faryar Moshtaghi, D.O., and daughters, Sabrina and Nicole, live in Circleville, Ohio. Dr. Moshtaghi is a physician and surgeon.

**Loren Van Essen** and wife, **Susan Strah Van Essen 1973**, are living in Des Moines, Iowa, where he is a stockbroker. She is a speech pathologist at Area Education Agency No. 11, Ankeny, Iowa.

'71

**Robert A. Walker**, Biddeford, Maine, is a mechanical drawing teacher and industrial arts department head in Berwick, Maine. He and his wife, Sandra, have two children, Tasha and Erin.

**Diane Muntz**, Fairfield, Iowa, is home economics department chairman at Fairfield Junior High.

**Thomas K. Jaeger**, wife, **Brenda Riley Jaeger 1974**, and daughter, Sara, live in Springfield, Mo. He is principal of Pleasant Hope (Mo.) Elementary School, and she is administrative assistant. Dan O'Connell and Associates Inc.

**Kitty Jo Wiss Gates**, husband, **William S. Gates 1973**, and children, Christopher and Ashley Jo, live in Jefferson City, Mo. He owns Thomas Jefferson's Menswear.

**Sandra A. McBratney**, husband, Robert T. McBratney, D.O., and children, Colleen, Brendan and Morgan, live in Aptos, Calif. She is a receptionist in her husband's office. He has a private family practice.

**Dee Hartley Troester**, Kirksville, was recently appointed chairperson of the Kirksville Unit of the Missouri League for Nursing. She is a clinical nurse specialist at the Kirksville Regional Center for the Developmentally Disabled.

**Roger F. Gibson, Jr.** of Manhattan, Kan., is the author of *The Philosophy of W.V. Quine, An Expository Essay*, published by University Presses of Florida.

**Joan Heady Sharp**, Bluegrass, Iowa, is a teacher and part-time model. Her husband, Gary, is a salesman, Valeron Corporation.

## Alum brings child care to high school

Classroom theory vs. practical experience—most students would probably choose the latter. But in high school the choice is often misleading. Not so in the three child development classes of 1975 NMSU graduate Deena Fowler. Fowler has her students practicing what she teaches with a hands-on child care program at Hickman High School in Columbia, Mo.

"I thought students needed a chance to learn what it's like to work with children," Fowler told the Columbia Missourian. "I wanted them to get hands-on experience."

The class make-up is such that Fowler's high school students are not only taught the theory of child development and parenting, but they are involved in a parent-caring role with young children. The students supervise the enrolled children for three hours every Friday and monitor their progress and behavior throughout the semester.

Fowler began the program after investigating similar programs in St. Louis and questioning her students for potential parents who might enroll their children in such a program.

Fowler, who received a bachelor of science in education in vocational home economics, said her NMSU child development labs under Olivene

Baker, home economics instructor, assisted her in developing a child care program. "She (Baker) helped with a lot of the ideas we got for the playschool." And through her experience as president of the NMSU Student Section of the Home Economics Association, she developed her organizational abilities "which, believe me, you need," she said.

Fowler advertised for the opening of the school in the 1981-82 school year and accepted the first 20 children of interested parents. These children were divided into five groups to which students are assigned. During the week, students plan one art and one physical activity for their group.

"Mrs. Baker spoke to the child development classes and gave them activity ideas," Fowler said. For example, Baker told the students about "pudding painting," which is finger painting with pudding, and she also recommended different recipes to make.

Baker said Fowler had some "large and enthusiastic classes" with male as well as female students. A program such as this is "excellent," she said, "because this may be as far as a lot of them (the high school students) will go in formal education."

And, she said, at a few schools, some students already have children, and this is good exposure for them.

The children enrolled are at the school for three hours, and every hour a different class is in charge of them. Fowler said, "It takes them (the children) awhile to get used to it. Each child gets attached to one student per hour." However, within a couple of weeks, she said, they get used to the bell ringing and a new set of students going in.

One parent told Fowler that her children look forward to associating with students who are teenagers. Fowler said many of the enrolled children are usually just around younger children or adults.

Besides planning activities and submitting a weekly schedule, Fowler's students must observe and keep a report on the development of one child. At the end of the year, the student writes a paper based on these observations.

Fowler's students stressed two things which they learned after the completion of the class last year. The Columbia Missourian reported that their first lesson was in the realization of "the physical and emotional capabilities of children at different ages." The second? "They said they learned patience," Fowler said.

### Division Update: Nursing

## Senior named Missouri nurse of the year

A junior nursing student received the honor of being named the Missouri Student Nurse of the Year by the Missouri Student Nurses Association.

Melissa Rowe of Kirksville was one of five candidates selected to represent their schools at the 1982 Missouri Student Nurse Convention.

It was the first time a student from NMSU had been chosen for the state title. "There was a lot of competition from bigger universities like St. Louis and Kansas City.

I was really surprised," Delores Lesseig, assistant professor of nursing and adviser of the NMSU Student Nursing Association, said.

The local nursing association selected Rowe as the candidate for the University. A set of criteria had to be met by candidates, and they had two

interviews with four judges. The interviews were to determine how well students had learned nursing concepts and whether they could apply their education in a practical

sense. For her knowledge and judgment in work settings, Rowe received a \$100 scholarship.

Rowe is only a junior in the program, which proves that training at NMSU compares highly to larger universities in the state, Lesseig said. "The honor reflects very positive things about the nursing program."

Members of the NMSU Student Nurse Association have participated in MoSNA for the past two years, Connie

Ayers, associate professor of nursing, said. Rowe was elected second vice-president and held the office of secretary for 1981-82. Senior nursing major Matthew McGahan was elected public relations director this year.

McGahan will represent the University at the National Student Nurses Association convention in Minneapolis, Minn. "It is quite an honor to have representatives at the national convention from such a small university," Lesseig said.



Missy Rowe student nurse of the year