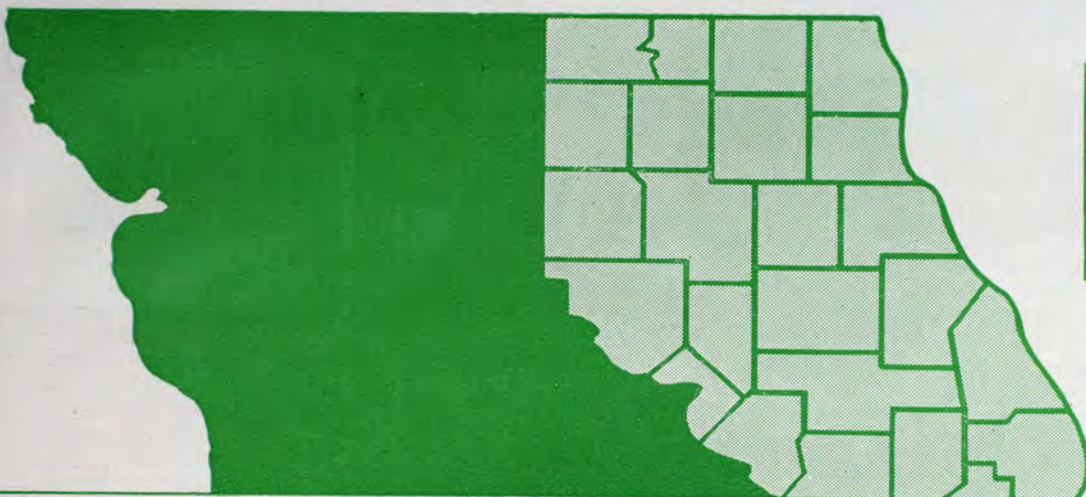


# NEBROSCOPE

SPRING  
1947



## PRESIDENT'S CORNER

One of the most important questions today in the minds of educators is this: "Will the citizens of our democracy become sufficiently aroused in time to prevent our educational system from falling apart through neglect and indifference?"

There have been many indications that we are indeed unmindful of the crisis upon us. For example, many fine teachers have left the profession to enter, temporarily at least, more lucrative activities. Some have gone into business, others into industry and still others, particularly in the fields of social and physical sciences, into government service.

The wartime practice of granting emergency certificates to those people normally considered professionally unqualified for teaching has continued until our schools have in some cases become staffed with teachers with little or no professional training for the great mission of educating our children. This in turn has probably been a contributing factor to the leaving of the profession of able administrators who thought they could not conscientiously continue to administer a program of education with a poorly equipped staff.

Then, too, because of unavailability of materials during the war years many plants were allowed to deteriorate until the physical accoutrements necessary in a modern educational program were almost totally lacking.

In the face of these facts it is small wonder that educational leaders over the nation have been gravely concerned over the future education of our youth.

Recently, however, there appear to be signs of awakening to the problem and in numerous instances the response has been gratifying. City after city has voted increased levy in order to raise the salary of their teachers to enable them to continue in their chosen profession. The small towns and rural areas are also rising to meet the occasion by voting increased levies and consolidating their schools. Evidence that the State of Missouri is endeavoring to meet the problem squarely is found in the concern of the present legislative body in its careful examination of the problems pertaining to public education. Likewise the Missouri Farm Bureau Federation has taken the initiative to hold hearings and institute legislation relative to revision of the 1931 school law, with a view to reorganizing the state into larger administrative units. This is a

# NEMOSCOPE

NORTHEAST MISSOURI STATE TEACHERS COLLEGE  
KIRKSVILLE, MISSOURI  
WALTER H. RYLE, PRESIDENT

## EDITOR

ROBERT L. MCKINNEY

## EDITORIAL BOARD

WRAY M. RIEGER  
PAULINE D. KNOBBS  
BERENICE B. BEGGS  
C. H. ALLEN

## ART ADVISER

RUTH E. STRAIGHT

VOLUME I

SPRING QUARTER, 1947

NUMBER 3

## TABLE OF CONTENTS

THOMAS J. ANGUS, *In Memoriam*.

LIBRARY SERVICE FOR MISSOURI.....Elizabeth Spindler

K.S.T.C.'s BALDWIN HALL.

AMERICA'S YOUTH ARE ENTITLED TO BETTER SCHOOLS.....Jane Crow

CASSITY MUSEUM COLLECTION.....Homer Knight

J. B. BOHRER, Portrait Artist.

A quarterly publication issued in November, February, May, and August.

Subscription rate is \$1.00 a year; single copy \$.25.

Address all communications to Robert L. McKinney, Assistant to the President.

Entered as second class mail matter April 29, 1915, at the post office at Kirksville, Missouri, under the Act of Congress of August 24, 1912.

Accepted for mailing at special rate of postage provided for in section 1103, Act of October 3, 1917, authorized July 26, 1919.

crucial problem facing public education in Missouri and the Farm Bureau is to be commended for its leadership.

Thus, the people of Missouri are moving to meet the challenge of the educational crises. They are realizing

with Thomas Jefferson that in order for the democratic form of government to survive our public schools must be kept strong. It can truly be said that the democratic processes are in ferment.



With the passing of Thomas J. (Tom) Angus, the Teachers College has lost one of its most distinguished teachers and loyal alumni.

Mr. Angus was born in Knox County, July 19, 1889. He entered "Normal Number One" as a student in September 1913 and received a 90 hour certificate in 1916. In 1920 he received a B. S. degree from the Teachers College and began his teaching career which was outstanding in devotion to the cause of public education in Missouri.

Mr. Angus was at one time principal of schools at Fulton, Lexington and Mexico, Missouri.

In 1932 he received his M. A. degree from the University of Missouri and later took graduate work at George Washington University, and Harvard University. He had completed all requirements for the Ph.D. with the exception of the dissertation. In December 1937 he became a member of the faculty of his Alma Mater and served as Director of Extension and Assistant Professor of Government

until his untimely death on April 11, 1947.

Mr. Angus was a thorough scholar, a great teacher and a devout Christian gentleman. He was a man who spoke softly but had deep emotions and convictions. He was unswerving in his devotion to his ideals, principles and philosophy of life.

The influence of Tom Angus on the campus of this College will long be felt, and we cherish the memory of this great citizen, teacher, scholar, and alumnus.

# LIBRARY SERVICE FOR MISSOURI

Since January, when I joined the staff of the Missouri State Library, my friends look blankly at me and say "What do you do?" Even in library school, no one knew much about state library agencies. I think if the readers would visit our organization, they would have a better idea of the things we do, or try to do, in this state.

When the office opens at 8:30 a.m., the first thing that must be given attention is the mail. The mail will contain mostly requests for books, and answers to reference questions. The mail has the number one priority in the State library. "The mail must go out." As we are temporarily without a reference librarian, the rest of the staff must pinch-hit.

The daily quota of mail will contain items similar to these: requests for three school library collections, a public library wants to borrow fifty books to supplement its collection, and individual requests for books. All the other work must wait until this is done. The 1,700,000 rural Missourians without any local library facilities, and many of the others who do not have adequate library service, must be helped first. A teacher requests ten reading circle books for her pupils to

by

*Elizabeth Spindler*

Cataloger and Manager of Traveling Libraries

State Library, Jefferson City, Mo.

read. Of course, most of the titles she requests are out, but substitutions must be made by sending similar ones. With county library service she could pick the books that are best suited to her needs from the bookmobile as it stopped on its regularly scheduled trip, or she could visit the county headquarters. A request from a clubwoman who must prepare a paper on "Christian Women the World Over," is confusing. Now does she want women in general from Christian countries? Does she want outstanding Christian women in any country? What does she want? If she could ask a local librarian this question, the problem could be discussed and clarified. Another person asks for *THE WAYWARD BUS*, *PAVILION OF WOMEN*, and *THE EGG AND I*, all of which are in constant circulation and all of which have long

waiting lists. This borrower must be added to the waiting lists. The librarian will send her MR. AND MRS. CUGAT and Walker's *THE QUARRY* and hope that she will be pleased. By noon, the state library staff wants a county or regional library within reach of every Missourian much more than ever.

It is at this point that the extension workers come in. There are four librarians, one for each section, trying to help people to help themselves to library service. By voting a mill tax, any county can set up, or any group of counties can set up, county or regional libraries. The state will help them financially. Missouri has just about the best library legislation in the United States, and that, after all, is the only safe foundation for public service. Missouri's new constitution provides for state aid. Senate Bill No. 369 provides enabling legislation and charges the State Library with leadership in establishing such units, and with the responsibility of helping existing libraries. The extension workers, therefore, are given almost as much priority as are the borrowers. In the school elections of 1947, 18 counties voted favorably for the one mill tax to establish a county library. That makes 29 in all. But there are 85 counties without this service. Only three of the 29 are in northeast Missouri: Clark county, Randolph county, and Putnam county.

Many people think that the bookmobile is the county library, when really it is only part of a county library system. It is the aim of every county library board and county librarian to have branch libraries, deposit stations in community centers, mail service from the central library headquarters, information service by telephone or mail, as well as the bookmobile service.

Have you ever seen a bookmobile? It is nothing more than a truck built with shelves on the inside to carry a thousand or two thousand well-selected books suitable for all members of the family to read. Besides books, there are frequently magazines, films, records, and pictures to lend to county library patrons.

The weather is never too cold or too hot for the librarian and the bookmobile driver to make the regularly scheduled trips throughout the county. They visit every rural school, community center, store or home where adults and children gather to select



Wherever people congregate the Bookmobile finds eager customers.



Dewey classification book and all the other books necessary for cataloging, the procedure is interrupted by a request for help. A man who works in the State office building needs some help with his work. He needs a picture of the first grist mill in Missouri. After frantically searching in every historical book on Missouri, it is located in a children's encyclopedia. Then the clock says five o'clock and it is time to go home, but the cataloger must stay to have a little quiet time to work on cataloging, because those new books are needed very much.

If you are interested in county libraries, you can examine the libraries in your own section. Clark county has had a library since April of 1946. They are enjoying direct service and have their bookmobile now. Before that time a truck was used. They are getting ready to build a home for their library with money left by Mr. Sever, a former resident. Putnam county has a librarian, and is now preparing to give service, and the librarian for Randolph county will be on the job June 1. The counties south of the river are taking advantage of this opportunity for broadening their outlook and increasing their pleasures and becoming more effective citizens much faster than are the counties north of

(Continued on Page 10)

The Bookmobile pauses to allow school children in a remote section to make their selections.

books at approximately four week intervals.

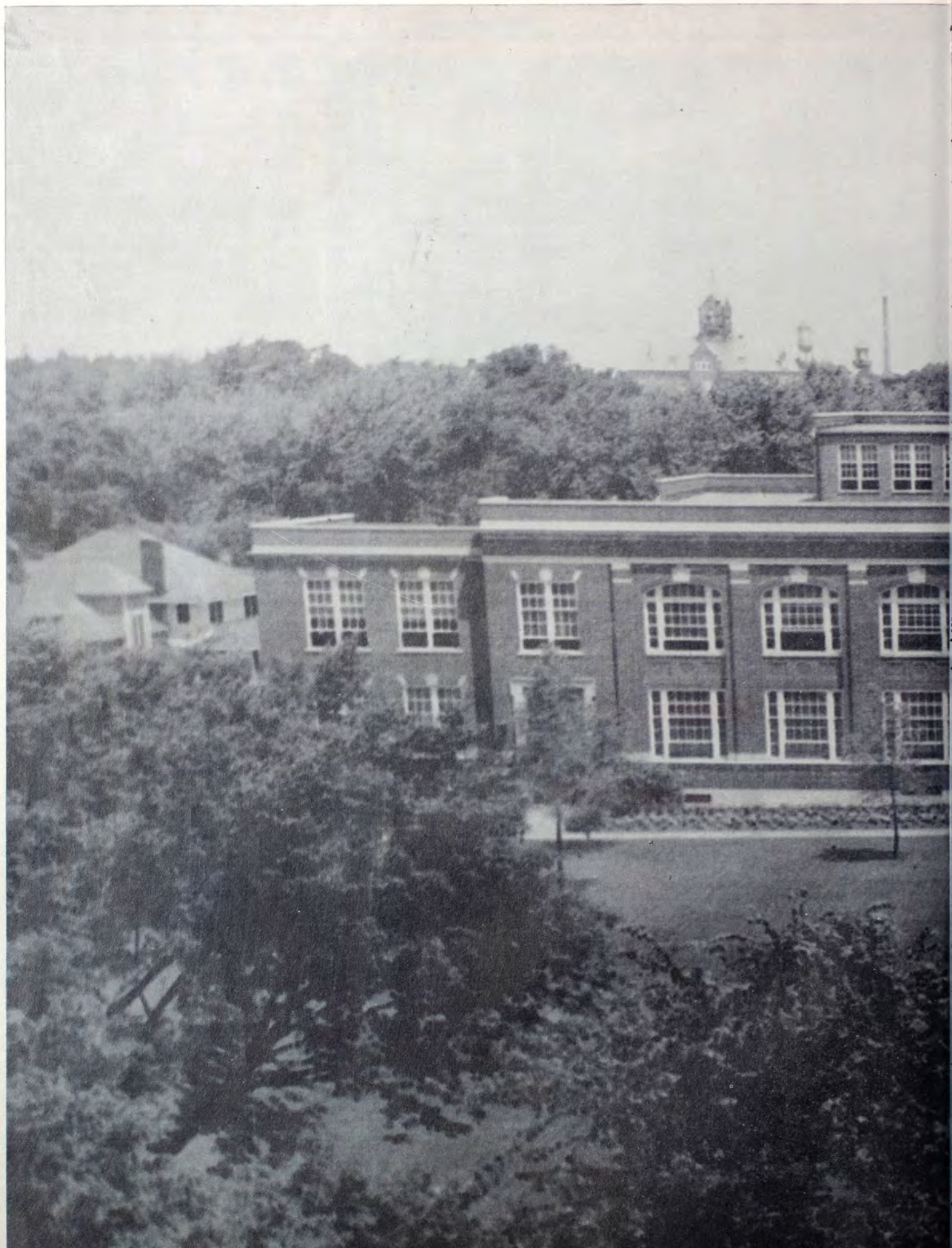
The properly qualified county librarian soon establishes her popularity with the people who meet her on these trips by her real interest and helpfulness in solving their problems, her story hours for children, her book talks and program helps for clubs. When she needs help, she can always appeal to the State Library for books, information, the services of an extension worker, or any help she may need. Only recently we selected from our shelves 700 books to help a newly established county library to begin service much sooner than would otherwise have been possible. This is in line with one of our largest services—sending out collections at the request of schools, communities or libraries. For example: a collection for a school of fifteen pupils is requested—two in the first grade, four in the third, two in the fourth, six in the sixth, and one in the eighth. The state collection of books (numbering about 40,000 must serve almost 2,000,000 people) will not permit the central office to send more than about 20 books to this school for three months.

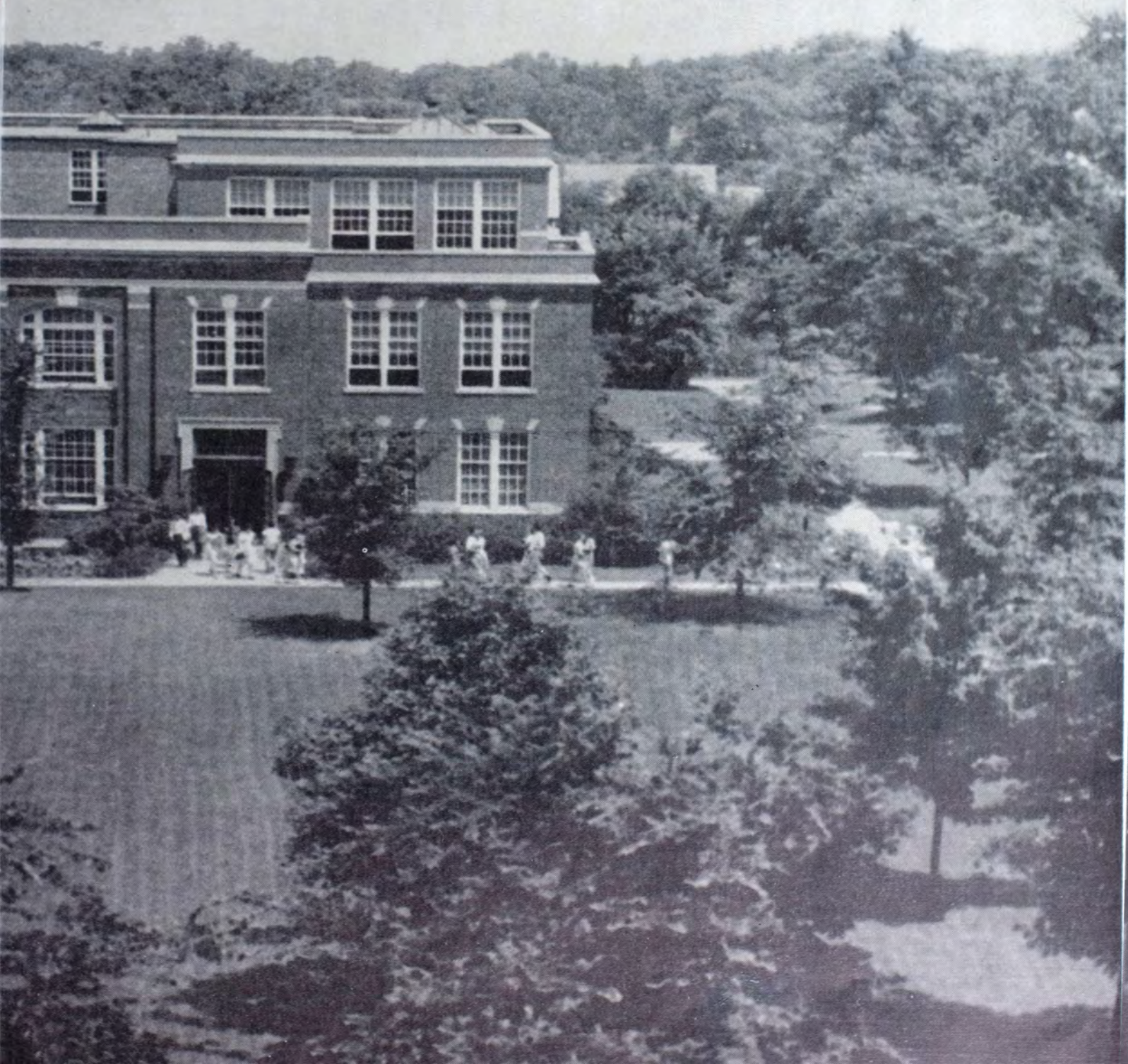
After gathering the books for this school, and a collection for a school of 200 pupils, and almost vainly trying to find some good newer books to send to

the public library wanting supplementary books, attention is turned to cataloging a few books. About the time we have the books at hand, the



A community library system reaches every community and every citizen.





# AMERICA'S YOUTH ARE ENTITLED TO BETTER SCHOOLS

by

*Jane Crow*

Assistant Principal of the Demonstration School

The lack of interest in teacher recruitment has caused great concern in those institutions dedicated to the preparation of teachers for America's public schools. Superintendents and other school officials have been confronted with the almost impossible task of finding men and women to carry on the education of the youth of our land. This shortage has awakened educators and other thinking people to realize the seriousness of the situation. All over the country these people are finding opportunity to express their ideas concerning reasons for such a crisis and to offer suggestions for the correction of this condition.

In an effort to further understand the educational situation in the Northeast Missouri area, a recent survey was conducted by the Education Division of the Kirksville branch of the American Association of University Women. The purpose of the survey was to clarify the reasons and causes of the critical teacher supply with the hope of assisting in correcting the situation, if possible in order to make for better schools and better teaching. The survey was tabulated under these heads: The results from returns from county and city superintendents, results returned by the teachers themselves, in addition to returns tabulated from questionnaires sent to school boards and citizens.

The citizens' questionnaire, which was distributed in the communities of Kirksville, Hurdland, New Boston, Purdin, Shelbina, Milan, Browning, and Linneus, produced the following results:

The traits considered most desirable in a teacher, rank in the following order: understanding of children, health and energy, ability to get along with people, knowledge of subject, and moral ideals.

Traits most disliked in teachers are narrow-mindedness, dictatorial manner, lack of interest in community activities, critical attitude toward living standards of the community and indifference to appearance.

Citizens believe it is fair for the community to expect a teacher to participate in church activities, to avoid activities involving politics, not to keep silent on matters of a controversial nature, to engage in commun-

ity activities apart from school. They also believe that teachers need not remain in the community over weekends.

Citizens admitted that they do not know the exact amount paid teachers for their services but that from information they have, they do not think these salaries fair and adequate. They do not believe in men being paid more than women with the same training and experience for doing the same job. They also believe the State Retirement Benefits are inadequate.

The superintendents' questionnaire is tabulated under two heads: the results from returns from county superintendents of schools, and the results from questionnaires returned from city superintendents of schools. Macon, Scotland, Schuyler, and Adair County superintendents cooperated in this survey. City superintendents from a large part of this area also sent in the information in answer to the questionnaire.

The city superintendents represented a total of 4212 students in the grades and high schools and 156 teachers. The county superintendents represented a total of 2945 students in all, and a total of 152 teachers.

The city superintendents said that approximately 80% of their teachers were selected from State Teachers Colleges, 18% from out-of-state teachers colleges and 2% from the State University; while the county superintendent selects approximately 86% from the State Teachers Colleges and a very small percent from the other two sources mentioned above.

The salary situation presents some interesting facts. Very few cities in this region have a salary schedule. Some are working on this now and looking toward the introduction of this plan in their system. This is in keeping with modern trends. In the city schools the highest average salary for men is above the highest average

salary for women, while in the rural schools this is reversed and women teachers in the top bracket get a little more than the men. However, the average shows only a difference of \$80 on the year.

A large percent of the city school teachers have life certificates. A small percent of rural teachers have the same. A number of teachers are teaching on emergency certificates. A few rural teachers have had no college work.

The teaching load is heavy in most of the town schools. A number of rural schools are small.

In reply to the school board questionnaire, twenty different school boards, including Kirksville and surrounding areas, responded to requests made in this survey. Much of this information is the same as that asked of the superintendents and the summation of the results agree closely. It is interesting to note, however, that in regard to tenure practices, twenty percent of these schools have continuous contracts. The rest have annual election of teachers. Nineteen do not give bonuses to teachers attending summer schools. A large majority of these schools encourage teachers to visit other schools and observe other teachers. Thirteen of these boards favor more adequate retirement sums for teachers.

Some of them favor consolidation of districts as enrollment is too small to offer a program that fits the needs of the community. Some believe that the teacher and the community should become better acquainted and have a better understanding. "Teachers are badly underpaid," said one board member, "but with existing laws and taxes, not much can be done about it." This person also said that for the sake of our schools we should be giving more attention to making the teaching profession attractive.

The teachers' questionnaire was distributed over quite a large part of this area in order that the survey would express the opinion of a good sampling of those engaged in teaching. The information from this group concerning salary and qualification agrees with that received from school superintendents.

Generally, teachers receive encour-

agement for personal and professional growth from school authorities. Practically all belong to local and state educational organizations. A good number are members of national and honorary organizations. The majority find such associations helpful. School boards grant time to attend educational meetings on pay. However, financial aid is not given to encourage attendance.

These teachers say that living expense is about 50% of their salary.

Sixty percent of them do not carry hospital insurance.

The problems of most vital importance to those who returned the questionnaires rank in the following order: retirement benefits, reduced teaching load, better equipment, less crowded classrooms.

Comments added at the end of the questionnaires emphasized a few important facts which, if carried out or corrected, might lend impetus to

“back-to-teaching” movement. A number suggested that salaries were inadequate to meet the high cost of living, and that they do not compare with salaries received by skilled labor. Some thought that communities should be made aware of the importance of the teacher’s job. Others said that everyone interested in the future welfare of our country should exercise what influence he has to raise teaching to the professional standing which it deserves.

## CASSITY MUSEUM COLLECTION

by

*Homer Knight*

Museum Curator

Every spring thousands of records of great value for telling the story of how our ancestors lived are assigned to junk heaps and bon fires. When one adds to this intentional wastage, the accidental destruction by fires and water of many relics stored in attics, basements and odd nooks about the house one readily realizes how rapidly our supply of source materials are becoming exhausted.

To prevent the loss of valuable historical and educational materials; the Northeast Missouri State Teachers College has developed a program to preserve those relics and documents that best portray early life in Northeast Missouri. The Violette Museum is the core of the College’s effort to conserve mementos of the past to aid people from all walks of life to obtain an understanding of their heritage. Several thousand items have been donated to the museum by citizens of Northeast Missouri who wish to aid in the educational program of the state and to be assured that their cherished relics will receive continuous care to prevent destruction.

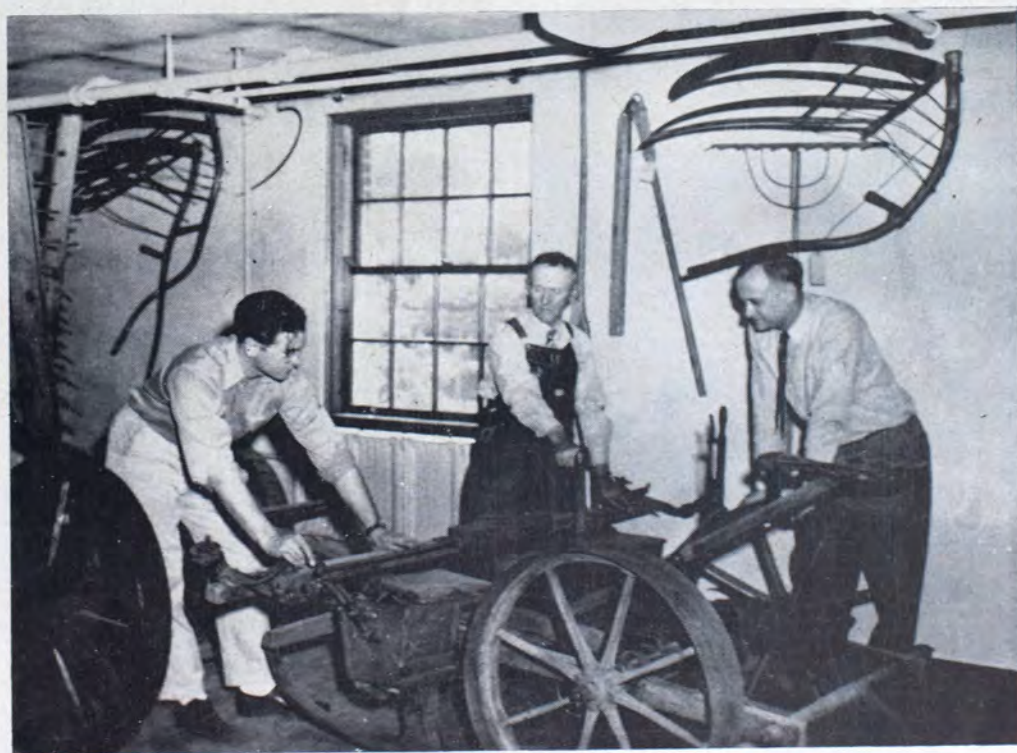
One of the outstanding collections donated to the Violette Museum is that of Mr. and Mrs. Frank Cassity of Purdin, Missouri. This collection of one hundred five items contains many tools, pieces of furniture, cooking utensils, farm implements, and documents found in early homes in this section of the state.

The Cassity family is particularly well situated to make contributions of this nature as they have lived in Northeast Missouri almost a century and their arrival is in many ways typical of early Missouri families. The story of an old linchpin wagon hub, all that remains of the wagon that carried the Cassitys from Kentucky to their new home in Missouri, pro-

vides a general pattern followed by other westward migrating families. The wide tread linchpin wagon with a bed so heavy the wagon had to be turned over to remove it, was constructed in Fleming County northeast Kentucky in 1848, and the next year was used to carry the Cassity family to Fort Madison in southeastern Iowa.

Not satisfied with their new location the family decided to move a little farther to the southwest where they settled, January 1851, in Linn County, Missouri.

The collection also aids in understanding some of the solutions pioneer families found for many of their most difficult problems. Cord and trundle beds, andirons, candle molds and a large assortment of household utensils tells the observer much concerning early homes of Northeast Missouri. Two pairs of red top leather steel-capped boots, one pair with wooden pegs holding the soles in place, aids



Mr. Cassity explains the operation of the hand-drop corn planter to Museum Curator Homer Knight and his assistant. Other items from the Cassity collection are shown on the wall.

one to visualize a part of the costumes worn by early Missourians.

The tools with which the men worked are also well represented. Chisels, planes, dividers, hand made saws, wooden pulleys and other equipment from the workshop attest to the general knowledge and skill of Missouri's early farm families. A grain cradle, a champion combine self-rake reaper and mower, purchased in 1880, as well as hand-lever horse drawn corn planter indicate the early development of farm machinery. A muzzle-loading deer rifle with its forty-six inch barrel and flared muzzle appears an excellent partner of the out-of-date machines.

Wills and land grants attest to some of the legal problems confronting early settlers. Even the dentist is not forgotten, for the Cassity collection contains a tooth puller used for a number of years by a doctor at Purdin, Missouri. The instrument fulfills the most distracted patients nightmare, and was made in the blacksmith shop on the Cassity farm.

Records have been carefully made of all items in the Cassity collection as well as others in the Violette Museum, many of which have stories of their own besides the important task of aiding us to understand the heritages early families of Northeast Missouri have passed to those of the present generation.



Mr. and Mrs. Frank Cassity, of Purdin, beside the reaper they donated to the Violette Museum.

## J. B. BOHRER, PORTRAIT ARTIST



Artist J. B. (Jack) Bohrer puts the finishing touches to the portrait of former president W. P. Nason

With the unveiling of the portrait of William Pinckney Nason, second President of the College, on May 9 the last of a series of six portraits by J. B. (Jack) Bohrer has been presented to the College and the public.

"Jack," son of Dr. and Mrs. E. E. Bohrer of Kirksville, was a student on the campus in the early thirties leaving in 1933 to do commercial advertising work in Detroit. Since that time he has studied with a number of nationally known painters and now specializes in portraits and studies of children in pastels.

In addition to his work at the Teachers College Mr. Bohrer has recently

completed portraits of the wife of Governor Phil Donnelly and David Donnelly, son of the Governor and Mrs. Donnelly.

"Jack" now lives at Grenada Hills, San Fernando Valley, California, and has been engaged in painting a portrait of the daughter of Joan Bennett, movie actress. He has also been engaged to do a religious mural for the Presbyterian Church of San Fernando and was recently invited to Bermuda to do portrait work for a prominent family there.

He is married to Mary Irwin from Pennsylvania, and they have one daughter Catherine Lee born August 31, 1943.

### —LIBRARY SERVICE

the river. In the recent election, all but four of the 29 counties voting favorably for county libraries were in the southern section of our state. Missouri—especially northeast Missouri—needs to awaken to the problem summarized as follows in the American Library Association publication EQUAL CHANCE:

"The success of democratic form of government depends on American citizens being intelligent and well informed. Our public schools provide the basis. Wherever it exists,

the library carries on and gives permanent value to the work of the schools. Our educational system is incomplete until our libraries reach everyone."

Yet, today in rural Missouri most of the rural citizens are out of reach of any library service except from their state agency. The question then arises—is there anything you can do to help secure county library service? Miss Janice Kee, the extension worker for Northeast Missouri, has had much county experience and will be glad to answer your questions and explain the county library service to you.

