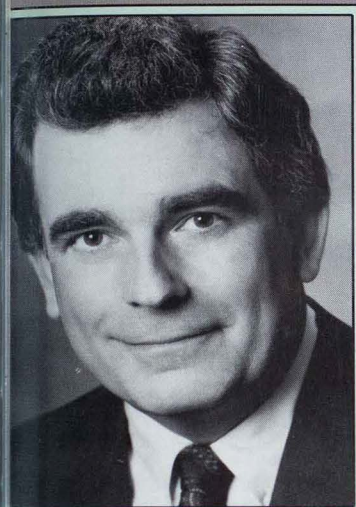


# Northeast

R E V I E W

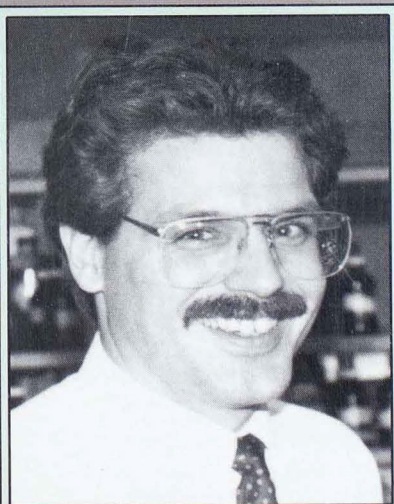
Volume 4, Number 1



Larry Moore ('67)

# NORTHEAST ALUMNUS OF THE YEAR

# MISSOURI PROFESSOR OF THE YEAR



Dean Van Galen

DRAWING UPON EXCELLENCE IN 1991

# From the President . . .

Dear Alumni and Friends,

Let me start my letter off with my very best wishes for the happy conclusion of the holiday season and the beginning of a bountiful new year. As we conclude one calendar year at the University and begin another, we all look forward to the opportunity the future days hold for us. It is my wish, then, that much opportunity awaits you as well.

I say "opportunity" because I believe we must approach even our largest challenges with the most positive face. Opportunity will be an operative word in the coming year at Northeast, because insofar as we equate opportunity with challenge, Northeast will have plenty of it.

I refer, of course, to the financial challenges which present themselves to all of higher education, and cause at Northeast the first adversarial situation of my presidency. Here in Missouri, we have suffered the defeat of our ballot issue known as Proposition B, experienced our share of the recession, and absorbed already a 9 percent withholding—almost \$20 million in real dollars—in the current year's budget.

Nevertheless, at Northeast we remain positive in our outlook. For one thing, we have received a clear signal from the people of Missouri that we cannot expect to receive additional public funding, and such a clear signal is much better for planning purposes than to be sat upon a fence of doubt and expectation. For another, we are a planning institution and we are positioned to respond to this financial challenge as a true opportunity for long-range planning. We do, indeed, have a plan.

It is our intention to avoid, as much as possible, large tuition increases in the coming years, but tuition increases are a certainty. How much they will be, and over what period of time, is dependent upon a number of other factors in our financial formula, and that is now under study.

Part of that formula involves the success of our development efforts, and I ask you to consider a first or an additional gift to the Development Fund. We appreciate the ongoing support of our donors, and I ask you to dig deeply to make a special contribution at this time. Others may be giving for the first time, and we welcome your involvement in the success of Northeast.

Let me share with you some startling numbers. In 1980-81, state funding provided 62 percent of our budget. In 1990-91, that source of funding dropped to 62 percent of our budget. Northeast is less and less publicly supported, and more and more publicly assisted. Consequently, to the extent donors help to close the gap, tuition increases will be minimized.

One thing in the equation is certain, however: we will not reduce quality. As the premier undergraduate liberal arts and sciences university in Missouri, and as a university with a growing national reputation for excellence, Northeast will move forward. It is no question of whether or not we can finance our continual improvement; it is only a question of from where and when those dollars will come.

So, I welcome you to join us in a new year of opportunity, and to share with us an expanding partnership dedicated to turning adversity into challenge, and challenge into success. You would not be reading this now if you were not already a part of Northeast's heritage of excellence in some way, and now is the time to focus clearly on your support.

I look forward to 1992 and beyond as years of superb growth for Northeast Missouri State University: growth in our academic excellence, growth in our dedication to student support services, and growth in our support of an environment conducive to a love of learning as a habit of life. Moreover, I look forward to growth in our knowledge of you and the vital role you play in the future of this special place.

Sincerely yours,



*Opportunity will be an operative word in the coming year at Northeast, because insofar as we equate opportunity with challenge, Northeast will have plenty of it.*

Russell G. Warren  
President

A handwritten signature in dark ink, which appears to read "Russell G. Warren". The signature is written in a cursive style and is located in the bottom right corner of the page.

# Northeast REVIEW

## Features

### 3 **University appreciates Moore**

TV anchor shares cancer experience with viewers.

### 5 **Homecoming '91**

Light My Fire makes Homecoming a weekend to remember.



### 8 **Missouri Professor of the Year at home at Northeast**

Chemistry Professor Dean Van Galen makes teaching fun and interesting.

### 14 **Northeast celebrates Quasquicentennial**

The University swings into its 125th year of innovation in education.

### 16 **Roberts makes tracks for NCAA Woman of the Year**

Stacy Roberts named state finalist for NCAA Woman of the Year; 1991 NMSU Athletic Hall of Fame Inductees

### 20 **Northeast begins new Chapters for Alumni**

Northeast Alumni Association begins chapters in St. Louis and Kansas City with great response.

### 22 **Notes makes their return in the Review**

Updates of your friends and colleagues, wherever they are.

### 36 **Friends of Northeast**

Friends of Northeast who have given \$100 or more to the University.

### 39 **Why Fund Raising**

With the state not responding to the funding challenge, Northeast alumni and friends are crucial for the development of the University.

## Departments

10 Around the Quad—Happenings on campus

16 Sports—Bulldog Fall Update

32 Obituaries

34 Letters

*Northeast Review*

Northeast Missouri State University

Alumni Magazine

Volume 4, Number 1

*President*

Russell G. Warren

*Art Director*

Winston Vanderhoof ('79)

*Editorial*

Bob Behnen ('91)

Jane Flanders ('91)

Barbara Dietrich Holthaus ('87)

Jennifer Miller

Sally Owings ('89)

Susie Rachel ('91)

Heidi Crist Templeton

Ellen Williams

*Sports Editorial*

William Cable

Ken Clayton

Missy Stark Hinkle

Sarah King

*Production*

Cindy Farmer ('90)

Casey Kesphol

*Photographer*

Ray Jagger

Northeast Missouri State University

Board of Governors

Richard S. Pryor, *president*

Larry Rutledge, *vice president*

Gary Ball ('78), *secretary*

Kimberly A. Ahrens ('68)

William V. North ('53)

James E. Moulder

Nancy Schneider

Thomas R. Shrout, Jr.

Philip Christofferson, *student*

*representative*

*Northeast Review* is published three times a year by the Advancement Office of Northeast Missouri State University, McClain Hall 106, Kirksville, MO 63501; (816) 785-4125.

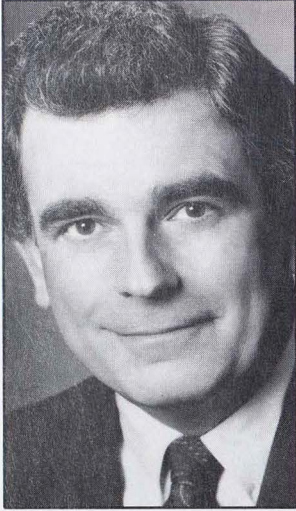
Letters may be addressed to:

Alumni Office

McClain Hall 106, NMSU

Kirksville, MO 63501

# Northeast appreciates Moore



*In October, Northeast presented the first Northeast Missouri State University Alumnus of the Year award to Larry Moore, news anchor at KMBC-TV in Kansas City.*

*Moore received his bachelor's degree in English from the University in 1967. He went on to be a news anchor for KPIX-TV in San Francisco and WLS-TV in Chicago.*

*The following story deals with Moore's recent bout with cancer.*

**K**MBC news anchor Larry Moore could be described as a man who just about has it all. A successful career. A supportive wife and family of five children. Fulfilling volunteer work. Recognition and respect from his peers. This past fall, Moore was named Northeast's first Alumnus of the Year.

Despite all those wonderful things, Moore's life was turned upside down in 1991 when he found out he had cancer.

Each year, thousands of people are diagnosed with cancer. Many more people don't find out they have the disease until it's too late. For Moore, the symptoms were subtle—a puffy eye and occasional uncontrollable tear. If he had waited a month longer, it would have been too late.

Moore was diagnosed as having a B-cell immunoblastic lymphoma on the left side of his nose in April. In the next few months, Moore knew his body would be going through some noticeable changes as a result of treatment. He would lose his hair. He would gain weight. And, the fatigue would overwhelm him. For those reasons as well as to stress early detection, Moore decided to go public with his cancer.

Channel 9 cameras chronicled Moore's experience from his initial announcement, through treatments, until the end when doctors declared the cancer was gone in November.

Moore hoped that by getting the word out about the importance of early detection perhaps one or two people might be able to get to a doctor before it was too late.

"Hopefully we got a few people who got to the doctor in time. And, from the tone and looks of the mail apparently we accomplished a little of that, and that's good," Moore said.



*Moore receives the Alumnus of the Year award from President Warren during the Kirk Banquet.*

“The very bottom line is if you notice something a little different going on with your body or anything of that nature, then you really owe it to yourself to get to a doctor and put it off for two weeks or a month or, like some people do, a year and then it’s definitely too late,” Moore said.

Throughout the whole ordeal, Moore continued to work full time. Some days were worse than others. He still has his bad days, which are disappointing.

“It’s so frustrating to be so tired and unable to carry on a schedule and constantly juggling people and having to cancel out,” Moore said.

“It was very difficult with the Dream Factory when we had so many kids who were waiting in line and I was just simply too debilitated to try to raise funds or anything. I simply had to sleep and things had to be postponed. There was just nothing more that could be done. It was real frustrating to be forced to sit on the sidelines and not be able to do anything,” Moore said.

Moore devotes much of his community work to children. Each Friday at 5 p.m., he presents Dream Factory segments which spotlight the wishes that come true for chronically ill and seriously ill children. In addition to the Dream Factory, he serves on the board of directors of the Cystic Fibrosis Foundation, the Marillac Center for Children, and the Lost Child Network. He is also co-host of the annual Variety Club Telethon whose proceeds go to area children’s organizations.

The people of Kansas City admire Moore’s volunteering spirit. At the NFL Alumni dinner, he was honored as Man of the Year for his volunteer work with children. He also received the 1989 Good Shepherd Award for his efforts on behalf of the developmentally disabled. This past year, St. Teresa’s Academy honored him with their annual Youth Humanitarian Award.

Among numerous honors Moore has received over the years, Northeast’s Alumnus of the Year award holds special meaning for this award-winning news anchor from Baring, Missouri. For Moore, northeast Missouri is his home, where his family and roots are. It is here he went to college and met his wife, Ruth Winter (’67). It is where he got his very first job in the media, as a writer for the Kirksville Daily Express.

“It’s [NMSU Alumnus of the Year] truly an outstanding honor, and to be the very first recipient is just a special honor. I’m truly flattered by it. When you think of the many good people that we have turned out at Northeast, and I know a lot of them right here in the Kirksville area, it’s just tremendously flattering to me,” Moore said.

Throughout his illness, Moore remained as active as was physically possible. In October, he was able to attend a banquet and ceremony at the University in his honor. He also participated in the Homecoming parade as grand marshal.

## Profile of a News Anchor

### Career achievements:

Best Newscast Award, Missouri Broadcasters Association  
Best News Coverage, Missouri Radio-TV News Association  
United Press International Documentary Reporting Award

### Career highlights:

Interviewing four United States presidents, Truman, Johnson, Ford and Nixon

**Philosophy:** “Our job is to present all sides of an issue. . . our role is not to interpret, not to advocate, not to editorialize. Our job as journalists is to present facts so that viewers can make their own interpretations.”

**On changes:** “The biggest change is that so much of newscoverage today is live as opposed to being on film 23 years ago, and that makes it much more of a challenge to do.”

**Advice to students:** “Basic English courses at Northeast are as important as anything they’ll ever study. Because their first job is not going to be anchoring the news. Those who can write well are the most sought out people in the business right now.”

## Alumnus of the Year Criteria

1. Recipient must be an alumnus/a of Northeast.
2. Must support Northeast Missouri State University in all of the following areas, unless he/she excels in one particular area:
  - A. Through monetary donations to the NMSU Development Fund.
  - B. Through time commitments, personal services, or personal resources offered to Northeast.
  - C. Through personal achievement or community service which reflects great credit upon the individual, the community, and Northeast Missouri State University.
3. Must be able to represent Northeast alumni by being the grand marshal for the homecoming parade.



Moore said his illness strengthened his ties to the region and made him and his family appreciate the area more than ever before. Moore received more than 2,500 cards and letters wishing him well.

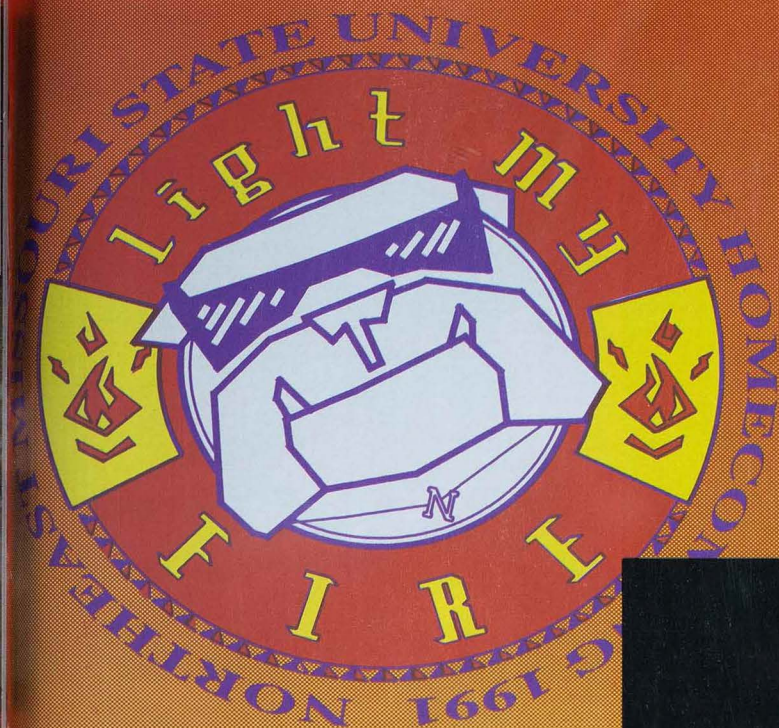
"The support from family and friends has just been tremendous and so much has been required because many days I'd have to sleep 18 hours. It's that support that really helped get me through all this," Moore said.

That support is also what keeps the Moore family in Kansas City and at KMBC. Moore began at KMBC in 1968 and returned to the station in 1984. He holds the distinction of having anchored the evening news for more years than anyone else in the Kansas City area.

"We're going to keep this thing going. Things are in excellent shape. Right now the goal is to get full strength energy back and continue doing exactly what I'm doing," Moore said.

*A part of being Alumnus of the Year is riding as grand marshal in the Homecoming Parade. Below: Moore and President Warren talk with Rep. Katie Steele ('83) during the football game.*

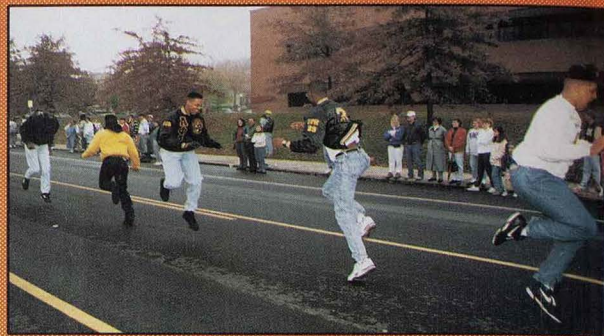




**N**ortheast's Homecoming 1991 included a scavenger hunt, pep rally/coronation, parade, science magic show, 5K-run, Bulldog Classic Golf Tournament, chilifest, football and soccer games, reunion brunches, comedienne Rita Rudner, Homecoming dance, welcome back reception, post-game reception, and other activities. Homecoming set school spirit on Fire!

*Right: Science faculty Ken Carter shows his choice in soft drink*  
*wins in atmospheric pressure experiments at the science magic show.*  
*Far right: The pep rally brought out the best in skit competition.*



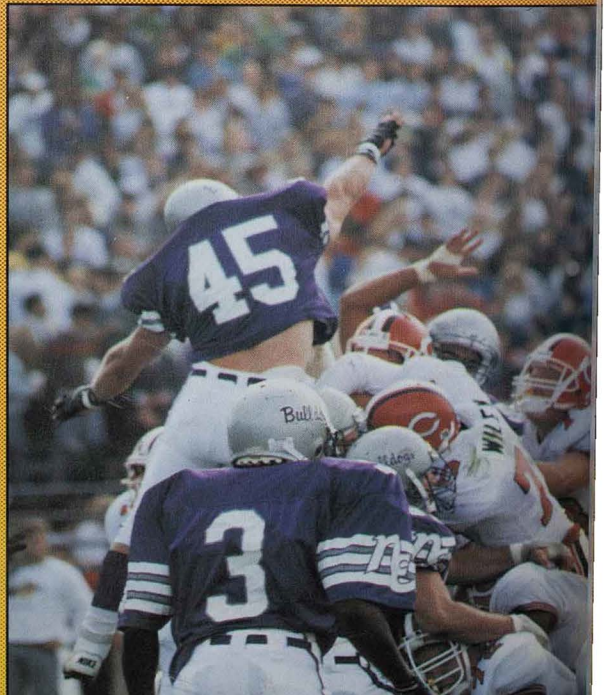


Left: Tina Burckhardt, junior psychology major from Portage Des Sioux, Mo., and Greg Godt, junior business administration major from Kirkwood, Mo., were elected Homecoming 1991 Queen and King.

Top: Members of Alpha Phi Alpha "Step Down." Above: Members of Delta Zeta and Phi Kappa Theta roast marshmallows on their float.



Above: A Bulldog fan rallies with keys jingling during kickoff. Right: 'Dog's defense tries to block a field goal. Central Missouri State University won the game with a last-second field goal, making the final score 38-37.





Top Left: Nemo Singers and alumni sing the National Anthem before the game.

Above Left: Alumni got the chance to catch up with each other at the post-game reception sponsored by the Alumni Association.

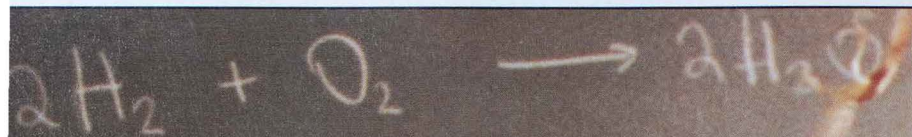
Above: Comedienne Rita Rudner entertained a capacity crowd in Baldwin Auditorium on Saturday night. Rudner was preceded by Northeast's Unique Ensemble.

Left: Bulldog Classic Golf Tournament winners were the Shandrowski father and sons team, NMSU sophomore Erik, David and Russ, of Kansas City, Mo.



# FIRE

Trying to set the night on



*“Education should and can be an exciting enterprise for both student and educator. . . . an instructor should communicate high expectations and should provide the means for students to meet those expectations successfully. My teaching philosophy is grounded in the idea that the motivation, enthusiasm, and achievement of students in a class will be no greater than that of the instructor.”*

**Dean Van Galen**  
assistant professor of chemistry

# Missouri Professor of the Year is at home at Northeast

Dean Van Galen's students know well the straightforward and honest teaching philosophy that their professor believes. It is that philosophy, which Van Galen demonstrates daily in his classroom, which has made him one of the most popular professors on campus and has earned him one of the most prestigious awards honoring professors—the Council for Advancement and Support of Education's 1991 Missouri Professor of the Year.

CASE, an international education association of colleges, universities, and independent elementary and secondary schools, recognized Van Galen's contributions to the campus community and to his discipline. In particular, he was praised for implementing high school seminars through which chemistry faculty "spread the word" about science to 20 schools in two years. CASE's competition honors those who excel as teachers and influence the lives and careers of their students.

From 439 nominations, Van Galen was named one of 43 state winners. The Merck Company Foundation, which sponsors the Missouri Professor of the Year program, presented a \$1,000 check to Van Galen for his achievement.

Van Galen came to Northeast in 1987 after serving a post-doctoral fellowship at the University of California-Berkeley. He holds a bachelor's in chemistry with a minor in mathematics from the University of Wisconsin-White Water. He earned his doctorate in analytical chemistry from Kansas State University.

Since he arrived at Northeast, Van Galen has been influencing a great number of students. His course-load includes: Basic Chemistry, General Chemistry, Quantitative Analysis and Instrumental Analysis. Although students from all levels of his classes offer overwhelming praise and support on his behalf, he is perhaps most popular with non-science majors that take his Chemistry 100 class.

"Dr. Van Galen is the best science teacher I have ever had. Speaking as a completely non-scientific person, Dr. Van Galen has made chemistry one of

my favorite courses by stimulating my interest. . . . He's great!", read one student evaluation.

"Above all, I strive to convey the excitement that I have toward science and towards becoming an educated person," Van Galen said.

Van Galen's reputation as being both professor and friend to students was evident when he was named Northeast's Educator of the Year by the student body in 1989, the first time the award was presented.

Vice President for Academic Affairs Jack Magruder echoes the students' appreciation for Van Galen.

"He has served this University and the larger community so well, and yet has been a warm human being that is intellectually outstanding. And that, I think, models what we're after at Northeast for our faculty and students," Magruder said.

"My greatest reward is when I can play a role in a student rediscovering the excitement of science and learning. . . ." Van Galen said. According to Van Galen, in order to do this, "it is important for the instructor to create an enthusiastic and supportive environment for learning, both in and out of the classroom."

---

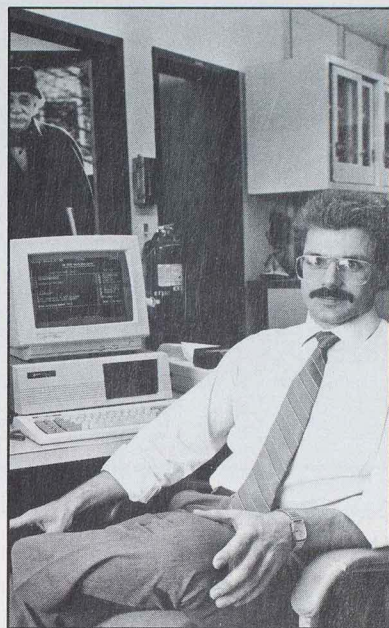
---

***"Dr. Van Galen is one of the most demanding instructors I have had at NMSU. However, he doesn't expect any more from his students than he does [from] himself. He has got to be the hardest-working instructor I know. He spends an unbelievable amount of time working at being the best teacher he can be—and it shows! . . . His concern for the student, combined with his genuine ability for effective teaching, will be one of the things I most remember about Dr. Van Galen."***

---

---

—a student evaluation.

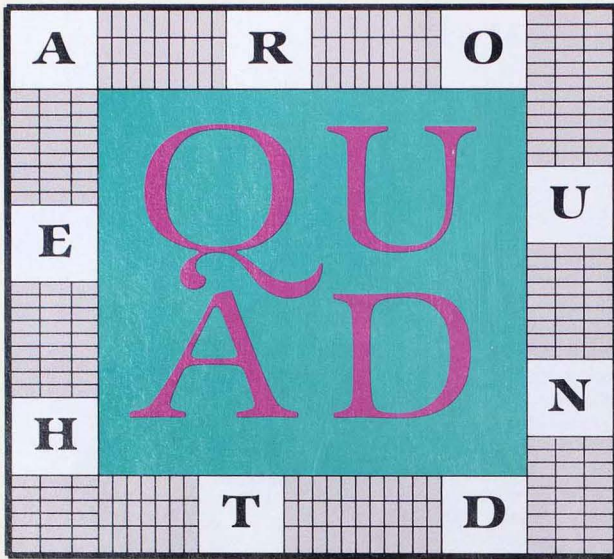


Van Galen works hard to create that learning environment in his classes and is committed to his students. He gets his students excited about the subject and he lets them have fun with learning. On occasion, he has shown up to class dressed as Albert Einstein.

Van Galen is excited, yet modest, about his honor of being named the Missouri Professor of the Year. "There are so many good teachers here that I feel we should have more awards to honor them," he said.

Van Galen hasn't changed much as a result of being chosen Professor of the Year. He still spends a lot of his time with undergraduate research. He still encourages his classes to learn more about what they don't know. And, he still thinks Northeast is a great place to learn and teach. "If I were a teacher at this University for the rest of my life, I would die happy," Van Galen said.

And as for the rest of the campus community, they already knew that they had one of the best professors in the country among them.



## Northeast ranked among the best, again

Northeast Missouri State has earned a spot in the *U.S. News & World Report's* 1992 survey of America's best colleges. The annual guide ranks Northeast 11th among the top regional colleges and universities in the Midwest.

Rankings were based on school reputation combined with statistics on "selectivity of the student body; the degree to which the school financially supports a high-quality, full-time faculty; the school's overall financial resources; and the level of student satisfaction as measured by the school's ability to graduate the students it admits as freshmen."

For the past two years, *U.S. News* ranked Northeast 13th among Midwest colleges and universities. In past surveys, the magazine has also named Northeast the number-one "best buy" among the Midwest's top schools and one of the country's five most innovative colleges.

In October, Northeast was recognized in Kiplinger's *Personal Finance Magazine* as one of the 37 "best buys in top colleges." And, for the fifth consecutive year, Northeast is featured in *Peterson's Competitive Colleges*. The 1991-92 college guide includes 353 top colleges and universities nationwide.

## Preussner named Associate Vice President of Academic Affairs



Alanna Preussner, assistant professor of English and grants specialist, has been named associate vice president for academic affairs.

Preussner's duties include those of Graduate Dean as well as coordination of advising activities, planning for grant activity, and faculty development. Active learning, retention review of the curriculum, and teacher technology in education are some of the areas that Preussner may work with in regard to faculty development.

Before coming to Northeast in 1989, Preussner was director of programs for the Kansas Committee for the Humanities. From 1978-85, she was at Yankton College (South Dakota) as assistant professor of English and Title III grant coordinator.

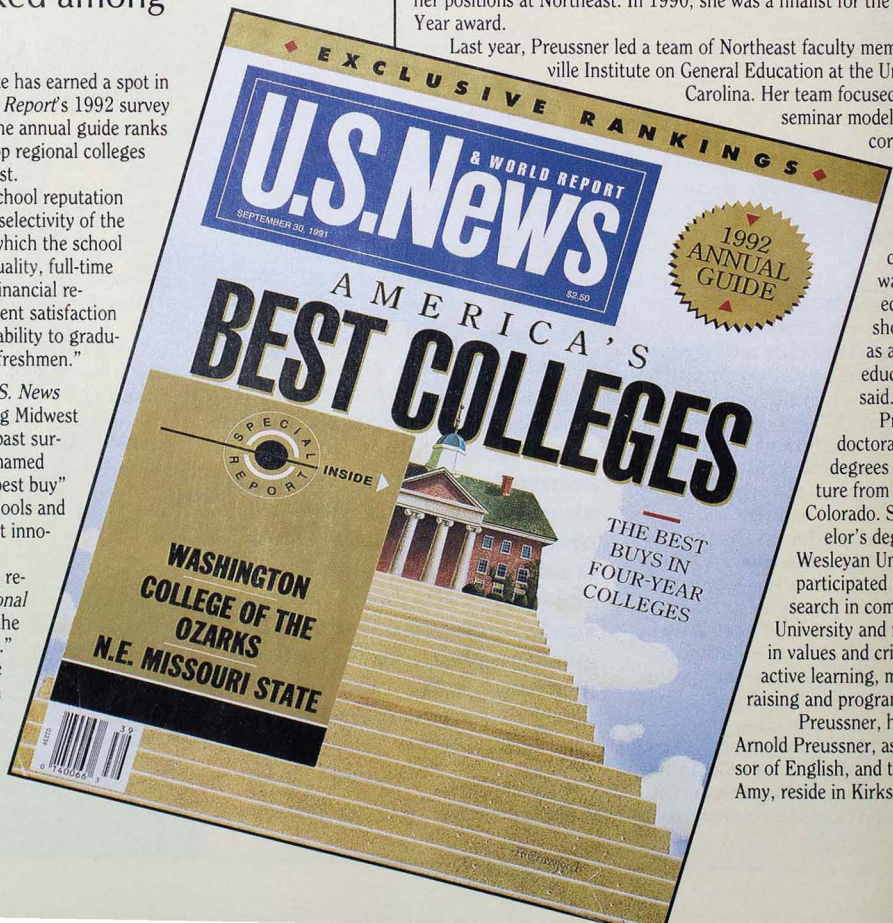
Preussner has worked with students, faculty and administrators through her positions at Northeast. In 1990, she was a finalist for the Educator of the Year award.

Last year, Preussner led a team of Northeast faculty members at the Asheville Institute on General Education at the University of North Carolina. Her team focused on the freshman seminar model, interdisciplinary

core courses, faculty development and active learning. "The critical question we asked was what a college-educated person should be able to do as a result of general education," Preussner said.

Preussner received doctoral and master's degrees in English literature from the University of Colorado. She holds a bachelor's degree from Illinois Wesleyan University. She has participated in postdoctoral research in composition at Brescia University and received training in values and critical inquiry, active learning, management, fundraising and program evaluation.

Preussner, her husband Arnold Preussner, associate professor of English, and their daughter Amy, reside in Kirksville.





### We've got the Right One Baby, Uh-Huh!

● Northeast received one of 10 grand prizes in the Diet Pepsi Commercial Contest this summer. The video, shot during the spring '91 semester, won \$10,000 and is part of a 30-second commercial compiled of segments from all 10 winning videos. Northeast's video was produced by Johnny Langley, assistant professor of communication; Chris Geisert, senior communication media major from St. Clair, Mo.; and the Student Activities Board. Originally, there were to be three \$10,000 winners. However, after viewing the more than 4,000 entries, Diet Pepsi decided to expand the contest.

### Northeast Network Forms

● Northeast's Career Placement Center has begun to tap into alumni as a possible resource for obtaining information for currently enrolled students.

"Different people have been able to make different commitments depending on time available, geographic location and things like that," said Career Placement Specialist Mariella Mecozzi-Marshall.

The CPC is identifying alumni who are willing to be part of the network and assist with mentorships/internships, recruitment development at their companies and community welcome programs among other opportunities. The first tangible effort is the completion of a career directory.

The directory will provide basic career data along with information not found in books, such as personal stories of how to get to a job and unusual career paths. The directory, which will be available this spring,

is designed to show students that there is more than one way to get to almost any job.

"What I think makes it so appealing to the students is that it feels real. It's warm. It's not some kind of study conducted on a nationwide scale with cold figures," Mecozzi-Marshall said. "We're talking about people who have taken the same classes as them, walked on the same sidewalks . . . people that have been here before them."

In addition, the Northeast Network is planning a career symposium consisting of multiple alumni panels on different careers on March 28.

Alumni wanting to contribute career information to students or to be a resource for students for internships, host a student, share information at seminars or workshops, or promote recruitment should contact Mecozzi-Marshall at the CPC, McKinney Center, (816) 785-4353.

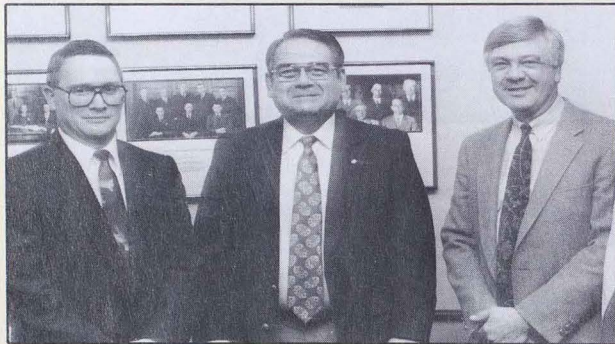
## ✓ Mark Your Calendar

September 19  
**Parents Day**  
 1992

October 3  
**Homecoming**  
 1992



**New Digs for Eats.** The grand opening of the newly remodeled Student Union Building Snack Bar took place on Nov. 7. The biggest change was the replacement of the "snack bar" with a food court, which offers choices ranging from Italian and Chinese food, pizza and hamburgers. For the first time, students were also able to use their Vali-dines in the snack bar.



## S.W. Bell supports Northeast



## Board elects officers for 1992

Northeast's Board of Governors elected officers for the 1992 calendar year at the Dec. 6 meeting held on campus. Elected were: Gary Ball ('78), secretary; Richard S. Pryor, president; Larry Rutledge, vice president.

Pryor is president and chief executive officer of the Bank of Jacomo in Blue Springs, Mo., and past president of the Missouri Bankers Association. He was appointed to the Board in 1986.

Rutledge owns and operates a 2,000-acre farm near Monticello, Mo. He serves on the Lewis County Extension Council and the Board of Directors for the URSA Farmers Co-op. He was appointed to the Board in 1989.

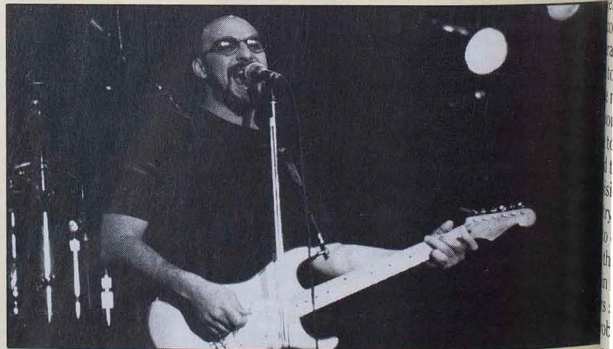
Ball, a certified public accountant, is the chief financial officer for Brookfield Fabricating Co. in Brookfield, Mo. He was appointed to the Board in 1989.

President Russell Warren meets with Jim Tackett, Southwestern Bell area manager for community relations. Southwestern Bell donated \$10,000 toward the development of a combined electronic and video communications program at Northeast.

## Schieber receives COPHE Award

English education graduate student Traci Schieber received a \$1,000 scholarship from the Council on Public Higher Education. Gov. John Ashcroft presented the check to her at the Missouri State Capitol building in Jefferson City, Mo.

**Pershing blown to SMITHEREENS.** Northeast's Student Activities Board brought the rock group *Smithereens* to campus during November. Even though the concert wasn't a sellout, the rock group generated a show that kept the crowd on its dancing feet.



Dave Mullison

# Going global



## Professor experiences coup

Visiting Associate Professor of Russian Liudmila Belobrova brought a firsthand description of the coup d'etat that took place in Russia last fall. Belobrova arrived in the United States on Aug. 23 to spend a second year as a visiting professor at Northeast.

"We lived through a difficult week in the Soviet Union," Belobrova said. Belobrova first heard about the takeover on Aug. 19 when she was at her country home, about 80 kilometers outside of Moscow. Early in the morning, a neighbor told her that there was a state of emergency and that President Gorbachev was no longer in power. Belobrova and her husband listened to the radio and heard that a committee had formed and had taken control. After this piece of information was aired, the radio stations ceased broadcasting.

Belobrova considers "the cessation of news broadcasting the most dangerous thing that occurred in Moscow at the time because an entire generation of people had become used to believing what was expressed in the media . . ."

Soon afterwards, her neighbors came to tell her that Gorbachev was ill and the new government was promising to bring order to the country. The new leaders promised land to every citizen and promised to solve the hunger problems which exist in the Soviet Union. The new leaders said that they would bring the problems under control in one or two weeks. Belobrova tried to con-

vince her neighbors that the takeover was indeed a military coup because the new leaders were the people in charge of the KGB, the defense ministry and the foreign office as well as the military complex in Moscow.

"The people very quickly began to understand what was going on . . . once tanks appeared on the streets of Moscow," Belobrova said.

She and her family returned to Moscow on Aug. 20. By this time, the center of Moscow was filled with tanks.

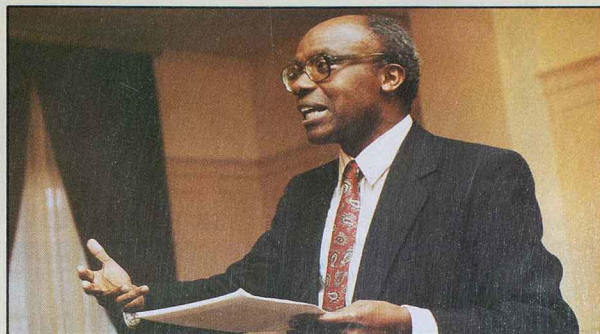
At this time, all of the democratic and leftist newspapers had been shut down by the new leaders. However, the journalists quickly printed leaflets which they scattered throughout Moscow so the people would know what was really happening.

On Aug. 21, the radio station Echo of Moscow announced that tanks were headed for the Russian Parliament building. The new government had ordered the army not to let the Parliament hold a session. The radio announcer asked for volunteers to stand around the building and stop the tanks because at 11 a.m., the Parliament session must begin. People came from all over Russia to stand around the building.

At 3 p.m., the radio and television began broadcasting again and it was announced that the government of the Russian Republic was again in command and that a plane was being sent for President Gorbachev. The criminals were to be arrested.

The most important lesson from the coup, according to Belobrova, was that "the democratic voices for once forgot their differences and were able to very quickly take control of the situation."

Belobrova believes that the coup failed for several reasons. The new leaders' promise that they would have the economic problems under control in two weeks was not feasible. The leaders promised to have the



## University hosts first Fulbright

Although several members of the Northeast community have been visiting Fulbright scholars on other campuses, until this year, Northeast had never hosted one. Godfrey Muriuki, a professor from the University of Nairobi, is teaching classes in African history and helping the Social Science division faculty increase their knowledge and teaching abilities about Africa this year.

Northeast has offered classes in African culture, politics, economics and literature. The University has the building blocks of a program, according to Jim Lyons, head of the Division of Social Science, and the University hopes that Muriuki can help plan for an African studies program.

Muriuki has been "favorably impressed" with Northeast. He said it seems to him that the administration has made a "concerted effort toward student interaction with faculty and staff." He noticed that most instructors are accessible to their students and will help them outside of class.

Muriuki is a professor of history and the chairman of the history department at the University of Nairobi. He is also a former dean of the faculty of the arts for the university.

harvest brought in during those two weeks, but the forces needed to do so were driving tanks to Moscow. Also, the coup leaders were extremely unpopular among the Russian people.

Belobrova believes that, as a result of the coup, the Russian people will trust the democratic process more.

Belobrova is thankful for the support Russia received from the American people during the coup. She hopes the United States will not weaken their support because the minority who supported the coup's leaders are still alive and will work for their cause.



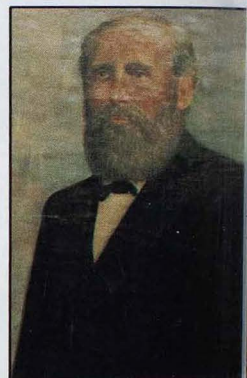
**International Night—a night to remember.** Northeast's international community held its annual dinner during early December. NMSU has 180 international students representing 39 countries.

# Quasquic



*Clockwise: The North Missouri Normal School and Commercial College, a private school established by Joseph Baldwin in Kirksville, became the First District Normal School on January 2, 1871. It was located at the corner of Hickory and Mulanix, now the site of Memorial Park. ◇ The presidential portrait of Joseph Baldwin painted by John Bohrer in 1942. ◇ The Normal School building was renamed Baldwin Hall in 1905, now the site for Kirk Memorial and the Sunken Gardens. ◇ Exercise time—morning assembly. ◇ The 1868 catalog for the North Missouri Normal School.*

February 13, 1867  
Joseph Baldwin arrived by train in Macon, Missouri where he boarded a carriage for Kirksville. His intent: to consider the prospect of starting a school there that had “a thorough program in the arts and sciences that is second to no college or university.”



That was 125 years ago. Today, as Northeast Missouri State University prepares to celebrate its quasquicentennial birthday and looks forward to the next century of innovation, the words of Joseph Baldwin continue to resonate through our nationally acclaimed University.

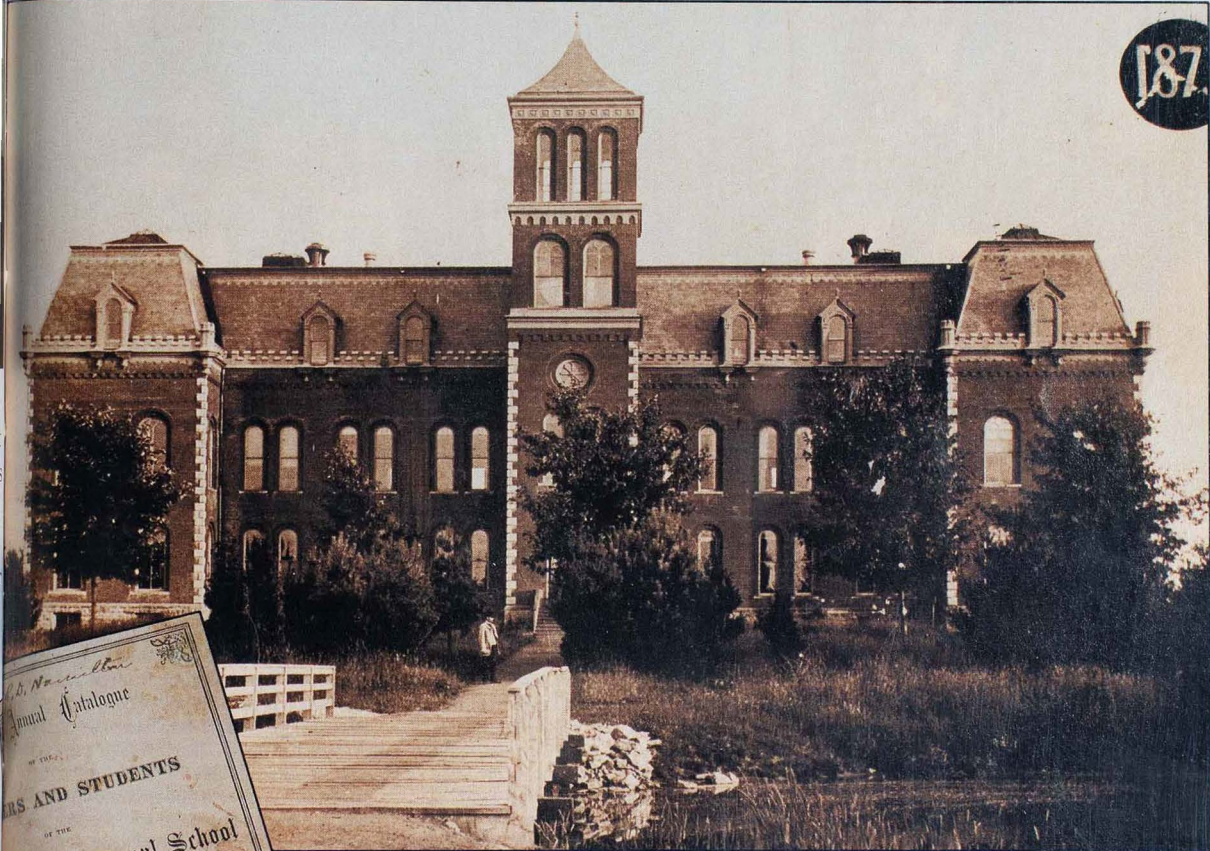
The photos on these two pages recall our heritage visually, even as the excellence of Northeast’s curriculum advances the founding commitment to academic excellence. From January, 1992 through Spring Commencement, 1993, the University will celebrate its birthday through many events which will be published to alumni and friends in the months to come.

For now, reminisce. Remember your University days, and your connection to the tradition of excellence that is Northeast Missouri State University.



STATE UNIVERSITY  
Centennial

187



*W. W. Newell*  
Annual Catalogue  
OF 1868  
FOR TEACHERS AND STUDENTS  
OF THE  
Missouri Normal School  
AND  
COMMERCIAL COLLEGE,  
ST. LOUISVILLE, ADAIR COUNTY, MISSOURI,  
FOR THE YEAR ENDING JUNE 26, 1868.  
ANNOUNCEMENTS FOR THE YEAR BEGINNING SEPTEMBER 1, 1868.  
MOORE, WILSTACH & BALDWIN, PRINTERS,  
45 WEST FOURTH STREET, CINCINNATI.





**1991 NMSU Athletic Hall of Fame Inductees** (front row, l to r) Shirley Mach, representing her late husband, Ray Mach ('55); Michael Berentes ('71); Jerry Germain ('65); Terry Bussard ('78); John Semanek ('49); Mrs. Mildred Gross, representing her late husband, Dr. Howard Gross; (back row, l to r) Charles Blakley ('71); Carroll Cochran ('36); Steven Powell ('78); Ted Michael ('65); Ronald Selkirk ('69); and Charles Petree, representing his late father, Leo Petree ('15).



## **R**oberts named state finalist for NCAA Woman of the Year

Stacy Roberts, (Columbia-Rock Bridge) a two-time All-American selection in track at NMSU, is the Missouri state finalist for the first NCAA Woman of the Year award.

The award, sponsored by Hanes Her Way, recognizes a senior woman who has demonstrated outstanding athletic ability, academic excellence and a dedication to community service.

Roberts was named one of 52 finalists, representing the 50 states, Washington, D.C., and Puerto Rico.

She is a four-year letterwinner and two-time All-American high jumper for NMSU,

finishing third in the 1990 NCAA Division II national indoor meet with a mark of 5-7 and tying for seventh in the outdoor competition. Roberts was ninth in the 1991 NCAA indoor meet with a height of 5-5. She was the 1990 Missouri Intercollegiate Athletic Association indoor and outdoor champion in the high jump and holds the school indoor record with a leap of 5-8.

Roberts, a 1991 graduate of NMSU, was one of 10 recipients of an NCAA postgraduate scholarship which she is using to pursue a degree in health and physical education with an emphasis in sports administration at the University of Missouri-Columbia.

## **F**OOTBALL Bulldogs chart strong finish in '91

The NMSU football team took a roller coaster ride in 1991. For head coach Eric Holm ('81), his staff and players, the campaign was full of ups and downs.

Although the Bulldogs finished third in the Missouri Intercollegiate Athletic Association where a preseason poll of conference coaches ranked them, they had to settle for an overall record of 5-6. Three of their losses were by a total of five points.

However, positive things came out of the recent campaign. For one thing, the 'Dogs won four of their final five contests. Only a field goal by Central Missouri State on the last play of the Oct. 26th Homecoming encounter prevented them from sweeping the final five games.

Many young performers on the roster gained valuable playing experience this past fall. Only place-kicker Scott Bresaw and nine other seniors among NMSU's top offensive and defensive units will not be back for the 1992 season. Nineteen personnel in the returning nucleus are freshman and sophomores.

The 1991 schedule was a difficult one for the 'Dogs, who were pitted against three national playoff teams.

Pittsburg State (Kan.), which blitzed NMSU, 55-20, in the sixth game of the season, defeated Jacksonville State (Ala.), 23-6, Dec. 14 for the 1991 NCAA Division II championship. Indiana (Penn.) University, which beat the 'Dogs 41-11 in the second contest of the campaign, was ranked first in Division II during the entire season and advanced to the Division II playoff semifinals before suffering a 27-20 setback to Jacksonville State.

Iowa Wesleyan, a 34-31 winner over NMSU in the 1991 opener, qualified for the NAIA Division I playoffs, losing in the first round to Moorhead State (Minn.), 47-14.

The 1991 Bulldogs broke or tied four school records.

Junior tailback Chad Guthrie (Newton, Iowa) rewrote the mark for most rushing yards in a single season (1,649) and tied the record for total touchdowns in a campaign (20), which are also new MIAA standards. Guthrie also shattered the NMSU mark for rushing attempts in a single game (48 against Missouri Western). Bresaw erased the school record for most field goals (30).

Ten NMSU football players, including Guthrie, were named to the 1991 MIAA all-conference team by the league coaches.

In addition to Guthrie, first-team selections from NMSU are junior tight end Fontaine Walker (Rock Island, Ill.-Rock Island) and senior offensive lineman Owen Doak (Rock Island, Ill.-Alleman). Walker and Doak were chosen for the 1990 first team, and Guthrie made the second team last year.

Guthrie, who finished second in MIAA ground-gaining this past campaign, climbed to fifth place on the school career rushing list with 2,509 yards.

Walker was second in receptions per game among conference leaders with 62 catches (5.6). He is currently third on the school list for career receptions (124) and eighth in career receiving yardage (1,317).

Seven Bulldogs captured MIAA third-team honors, including sophomore quarterback Chris Livingstone (Kirkwood-Country Day), senior wide receiver Randy Corbin (Richton Park, Ill.-Rich South), senior offensive lineman Dave Quentin (Cedar Rapids, Iowa-Jefferson), sophomore defensive lineman Geoff Hiddleston (Brisbane, Australia-Banyo), sophomore defensive lineman Mike Roos (Gladstone-Oak Park), sophomore outside linebacker Robby Flanagan (Plano, Texas-Senior) and junior inside linebacker Greg Godi (Kirkwood-Kirkwood).

Livingstone, who completed 158 of 268 passes for 2,126 yards and 17 TDs, finished third in MIAA total offense and passing efficiency this past season. He only had seven interceptions in 1991 and did not throw an



*Junior Chad Guthrie rushed for 1,649 yards, the most running yards in a single season and scored 20 touchdowns in '91. Both are NMSU records.*

interception in his final 103 attempts of the campaign. Livingstone is a transfer from the University of Missouri-Columbia.

This year, Corbin was ninth in conference receiving yardage with 32 catches for 681 yards and five TDs. He finished his career with 1,548 yards, currently seventh on the NMSU all-time list. Corbin was a member of the 1990 MIAA second team.

Flanagan and Godi led NMSU in total tackles with 93 and 92 total stops, respectively, while Hiddleston and Roos were credited with 48 stops apiece.

## **S** OCCER Bulldogs fall short on NCAA bid.

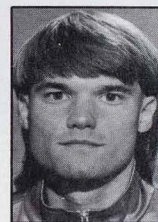
Despite a valiant try at the end, the Northeast Missouri State men's soccer team fell just short of an NCAA Championship bid.

The Bulldogs wrapped up five consecutive wins in their final five games to finish with a 10-5-1 record. Early in the season, NMSU struggled with one of the toughest road schedules in the country, which sapped their strength and confidence. But after the five wins, NMSU was sitting at 12th in the rankings and looking for a national bid. The 'Dogs fell just short, finishing 15th in the final Division II poll and out of the tourna-

ment. Five of their opponents were in the national rankings with four in the top 10. The 'Dogs posted a 1-3-1 record against the powerhouses, but two of the three losses were by a single goal, with the other loss coming in overtime to national champion Florida Institute of Technology.

Five seniors who have ended their careers are Mike Hritz (Maryland Heights-DeSmet), Mike Cannon, Jason Hicks (Wichita, Kan.), Richie Muth (St. Louis-CBC) and Stefan Wall (Lincoln, Neb.-Lincoln). Wall, a goalkeeper, was the NMSU all-time shutout leader (28), earning All-American third-team honors during his career.

The two top offensive threats, junior forward Matt Presley (Denver, Colo.-J. K. Mullen) and freshman forward Darren Moore (Scarborough, Eng.-Easingwold), will return next season. They combined for more than 40 points.



*Wall lands on Adidas All-American Team*  
Senior goalkeeper Stefan Wall capped off a distinguished career by becoming only the second NMSU soccer player to land on the Adidas/ISAA National Academic All-American soccer first team.

Last season, Wall was an honorable mention selection. Earlier this year, he was named to the Adidas Academic All-American team for the Midwest Region, again qualifying him for the national team. This was Wall's third appearance on the regional team.

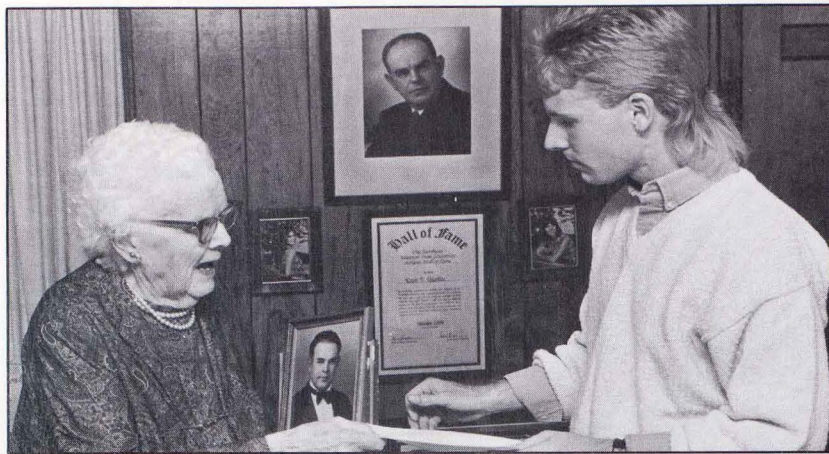
A standout, both on and off the field, Wall carries a 3.78 GPA as a pre-law/political science major. He has been named to the Dean's list at NMSU all four years of his career and is a recipient of the Presidential and Distinguished Scholar scholarships at NMSU. Wall is a member of the Young Democrats and is a youth soccer volunteer coach and referee.

This past summer, Wall participated in an elite goalkeeper camp in Denmark, by invitation of Heinz Hildbrandt, the former goalkeeper of the Denmark National team.

Wall posted 78 saves against 172 shots and allowed 21 goals with six shutouts for the '91 season. He holds the records for most shutouts in a career with 28, lowest career goals against average (1.13 GAA) and most shutouts in a season (8).

## **Lady Bulldogs schedule one of the toughest in the country.**

With one of the toughest schedules in the country and a new head coach, Stephanie Gabbert, the Northeast Missouri women's



**V**alentine Scholar named Scott D. Beattie, a junior mathematics major, receives from Mrs. R.E. Valentine the R.E. Valentine Memorial Scholarship. Named in honor of R.E. Valentine, former outstanding varsity athlete and former faculty member at Northeast, the Valentine Scholarship is awarded to a varsity letterman with at least one more season of athletic competition remaining. He must have earned the highest grade point average among all varsity lettermen during the regular academic year, based on a minimum of 24 semester hours earned. Beattie, who maintains a 4.0 GPA, was chosen from more than 160 varsity lettermen.

Beattie is the son of John and Marilyn Beattie of Greeley, Colo. He is a graduate of Day Spring Christian High School where he was valedictorian of his class. At Northeast, Beattie was voted most improved varsity cross-country runner for the 1990 season. He was captain of the 1991 cross-country team.

soccer team weren't sure what the 1991 season would bring.

Gabbert was not appointed to her post until early August, but despite the late start on the season, she was optimistic that the team would make a successful transition into a new era. However, the Lady 'Dogs finished the season with a 6-8-2 record, despite good performances against some of the top teams in the nation.

Four seniors finished their soccer careers this season, including three-time all-Midwest selection Maggie Froelich (Palatine, Ill.-William Fremd), Anne Elliott (St. Louis-Bishop DuBourg), Pam Workman (Florissant, Mo.-Hazelwood Central) and Susan Kyle (Woodridge, Ill.-Community South).

Several top players will return next fall, including 1991's top scorer, junior forward Kathy Corson, sophomore midfielder Susana Mendoza and sophomore back Shelly Landa.

Freshman Thad Bartram (Kearney, Mo.) led the Bulldogs with a 45th-place finish time of 34:51 for a snowy 10,000-meter course. Junior Scott Beattie (Greeley, Colo.-Day Spring Christian), who finished 58th in the regional with a clocking of 35:24, was the veteran of Coach Ed Schneider's young squad which had no seniors.

The Bulldog men were fifth in the 1991 MIAA Championships. But Schneider said next year's team could be vastly improved for the conference and NCAA competition.

Other performers expected to return besides Bartram and Beattie include sophomore Kevin Long (Oregon, Ill.) and freshmen Chad Jansen (Lee's Summit, Mo.), Carl Doyle (Sullivan, Mo.), Clint Cain (Liberty, Mo.) and Drew Figas (Fenton, Mo.-Eureka).

Schneider will also have the services of three veteran runners who redshirted this fall. They are Rob Jensen (Kearney, Mo.), Mark Hogan (Winfield, Mo.) and Dave Killen (St. Charles, Mo.-Oregon, Ill.). Jensen finished fourth in the 1990 MIAA Championships.

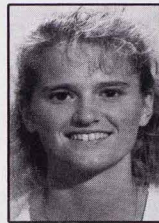
The cross-country women finished fifth in the Division II Great Lakes Regional after coming in second at the conference meet.

Junior Rhonda Ruden (Dubuque, Iowa-Hempstead) was NMSU's leading runner at

the regional meet with a 13th-place finish and a time of 20:03. Another junior, Lisa Dillin (Hastings, Neb.), came in 31st with a clocking of 20:49.

Ruden, Dillin and three other key performers are expected to be on hand next season for Coach John Cochrane. They include junior Greta Schneider (Ballwin-Parkway West) and freshmen Leslie Stanley (Panora, Iowa-Panorama) and Deborah Grifey (Liberty).

Cochrane will lose two seniors, Michelle Coleman (Kearney) and Debbie Bries (Dubuque, Iowa-Hempstead).



**Ruden selected to All-Academic Team.**

Junior Rhonda Ruden (Dubuque, Iowa-Hempstead) of the NMSU women's cross country has been selected to the NCAA Division II Cross Country Coaches Association All-Academic team.

Ruden is a psychology major and has maintained a 3.43 cumulative GPA.

Ruden was a leader for the Lady Bulldogs throughout the season, finishing fourth in the MIAA Championships and 13th in the Great Lakes Regional.

**VOLLEYBALL Lady Bulldogs finish third in the MIAA**

For the second year in a row, the NMSU volleyball team finished in a tie for third place in the Missouri Intercollegiate Athletic Association Tournament held Nov. 15-16 in Joplin, Mo.

In their first match of the championship the Lady Bulldogs defeated Missouri Western in four games, 6-15, 16-14, 15-10, and 15-10. They then went to the semifinals facing Central Missouri State. CMSU defeated the Lady 'Dogs in three games, 7-15, 6-15, and 8-15.

Felicia Sutton (St. Louis-University City) was named to the 1991 all-MIAA volleyball first team. Sutton led the Lady 'Dogs throughout the season in kills, solo blocks and assisted blocks. She has made an impact in NMSU basketball and was named to the 1990-91 all-MIAA basketball first team. She also earned the all-time leading rebounder in a season and career for the MIAA.

Neely Forbes (Davenport, Iowa-North) was named all-MIAA Freshman of the Year. She led the Lady 'Dogs for most of the season in service aces and defensive digs and came in a close second for kills.

## CROSS COUNTRY

The NMSU men's cross-country team wound up its 1991 season with a 13th-place finish at the NCAA Division II Great Lakes Regional in Edwardsville, Ill.

In celebration of our 125th Anniversary...

# The Official Northeast Missouri State University Watch



A Seiko Quartz timepiece.  
Featuring a richly detailed three-dimensional  
re-creation of the University Seal,  
finished in 14 kt. gold.  
Convenient interest-free monthly installment plan.

For faster service, credit card orders may be placed weekdays from  
9 a.m. to 9 p.m. and weekends from 9 a.m. to 5 p.m. (Eastern Time).  
Telephone toll free 1-800-523-0124 and request Operator C11JR.

## Personal Reservation Form

Mail Orders to:

**NORTHEAST MISSOURI STATE UNIVERSITY  
ALUMNI ASSOCIATION**  
c/o P.O. Box 670  
Exton, PA 19341-0670

Please accept my order for the following Official Northeast Missouri State University watch(es):

\_\_\_ Ladies' Seiko Quartz Wrist Watch with Leather Strap (NMO-SLS) @ \$200\* ea  
Qty \_\_\_\_\_

\_\_\_ Men's Seiko Quartz Wrist Watch with Leather Strap (NMO-SMS) @ \$200\* ea.  
Qty \_\_\_\_\_

\_\_\_ Seiko Quartz Pocket Watch with Matching Chain (NMO-SPK) @ \$245\* ea.  
Qty \_\_\_\_\_

\* Plus \$7.50 handling and insured shipping charge per watch. On ship-  
ments to Pennsylvania, include 6% state sales tax to total of order.

Purchaser's Name \_\_\_\_\_

Street Address \_\_\_\_\_

City \_\_\_\_\_ State \_\_\_\_\_ Zip \_\_\_\_\_

Daytime Phone ( ) \_\_\_\_\_

If "ship to" address is different from above please attach correct address to order form.

Please allow 6-8 weeks for shipment.

I prefer to pay as follows:

ENCLOSED IS MY INITIAL INSTALLMENT of \$40 for each strap watch or \$49 for each pocket watch, payable by check or credit card (information provided below), together with shipping and handling charge of \$7.50 per watch. I agree to pay the balance due in 4 monthly installments of \$40 for each strap watch, or \$49 for each pocket watch.\*\* (On shipments to Pennsylvania only, please include 6% state sales tax on total order to your deposit.)

IN FULL BY CHECK. Enclosed please find my check or money order for the full amount due, made payable to "Official Northeast Missouri State Watch".

IN FULL BY CREDIT CARD. Following shipment of my watch(es), please charge the full amount due to my credit card as indicated below.

Credit Card Information:      

Full Account Number: \_\_\_\_\_ Expiration Date: \_\_\_\_\_  
Mo.  Yr.

SIGNATURE \_\_\_\_\_

\*\*All orders are subject to acceptance. There is no finance charge on the monthly payment plan. The amount of payments (total sales price) is equal to the single payment price. If purchaser fails to pay any portion of the total payments scheduled, the entire balance shall become immediately due at the election of the watch distributor, Wayneco Enterprises.

Operator No. C11JR

# Alumni



## St. Louis Chapter Officers

### President

Tim Bahr ('90)

### Vice President

Tony Lema ('50)

### Secretary

Keith Dinsmore ('73)

### Treasurer

Kevin Kuebler ('90)

## Upcoming St. Louis Chapter Events

### January

Hospitality room before and during NMSU-UMSL basketball games

### March

Tour/Reception at the new St. Louis Science Center

### May

Sunday riverboat cruise on the Belle of St. Louis

### Summer

NMSU Night at Busch Stadium with the St. Louis Cardinals

### October

Roadtrip to NMSU for Homecoming

### November

Holiday party

What began with an enormous mailing to 4,000 Alumni Association members soliciting participation in alumni chapters, has blossomed into two chapters in Missouri and the budding of six additional chapters this spring. Northeast Missouri State University is now creating new opportunities for alumni to be active in the University on and off campus.

Through letters, receptions, and personal visits alumni are learning the advantages alumni chapters offer—promoting the interest and welfare of Northeast students and alumni; providing an opportunity for Northeast alumni to become acquainted through alumni activities in a community; encouraging social and professional camaraderie among alumni; and stimulating opportunities for alumni to support the University in areas of public relations, student recruitment, fund-raising, and career networking.



# Chapters

In October and November the St. Louis and Kansas City Alumni Chapters met to elect officers, form committees, adopt by-laws, and plan their first events. After each meeting, the chapters hosted receptions. Since the St. Louis Alumni Chapter reception followed a soccer game which pitted UMSL against NMSU, they invited Northeast soccer players, their parents, and coaches to the reception. The Kansas City Chapter boasts having University officials, past and present board members, and more than 70 alumni in attendance! Both chapters are growing in strength and membership.

The next alumni chapter on line is Columbia/Jefferson City. After the new year, plans will begin for chapters in Kirksville, Phoenix, Houston, Dallas, and San Francisco. Tune into future editions of the *Northeast Review* and watch your mail for chapter involvement.



## Kansas City Chapter Officers

### President

Larry Lunsford ('81)

### Vice President

Janet (Claypoole) Ravenscraft ('89)

### Secretary

Leigh (Klinginsmith) Perkins ('89)

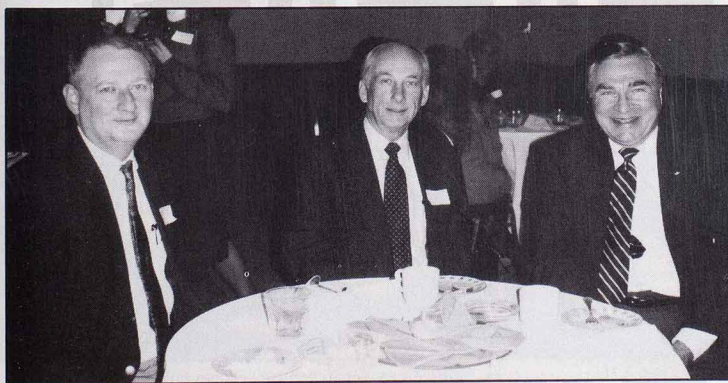
### Treasurer

Lisa (Ryals) Pinkerton ('83)

## Upcoming Kansas City Chapter Events

### January/February

An after-work social hour followed by a presentation of Northeast's growth



# NOTES

## 1920s

**Beverly Earl Lett** ('28) and his wife, Opal, reside in Holts Summit, Mo., and are both retired.

**Cecil O. Martin** ('29) and his wife, **Freta Ragsdale Martin** ('31), live in Kirksville and are both retired. They have two children: **James R. Martin** ('70) and **Sara Cloyed Trower** ('65).

**Violet Hawkins Mayes** ('29) is retired and resides in Cincinnati. She has one son, John.

## 1930s

**James T. Craig** ('31) and his wife, **Eunice Schnelle Craig** ('36), make their home in Clio, Mich. James is retired and is currently writing his memoirs. Eunice is also retired. They have three children: Thomas, Margaret, and Jean Ann.

**Velma Atha Rauh** ('33), of Palmetto, Fla., is retired. She and her husband, Oscar, have three children: Rebecca, Manfred, and John.

**Fern Harrington Miles** ('37) and her husband, Herbert, live in San Angelo, Texas. She is a retired seminary professor and missionary. He is an emeritus professor of sociology at Carson-Newman College.

**Marvin E. Langford** ('38) and his wife, Marjorie, live in Kansas City, Mo. Marvin is retired. The couple have one son, Marvin.

**Elmer W. Pundmann** ('39) resides in St. Louis. He is retired after teaching band for fifty years.

## 1940s

**Don H. Fields** ('40) and his wife, **Geneva Babbitt Fields** ('46), live in Chillicothe, Mo. They are retired.

**N. Ray Hatfield** ('41) and his wife, Patricia, are both retired and make their home in St. Petersburg Beach, Fla.

**Lucile Castagna Kurolvech** ('41) lives with her husband, Joe, in Warren, Mich. and are both retired. They have one son, William.

**Mary Twellmann Shulse** ('41) is retired and resides in Lancaster, Calif. She has three children: Sandra, John, and Beverly.

**Everett L. Heying** ('43) lives in Gales Ferry, Conn. He is retired. Everett is president of the Lymes Chapter of American Association of Retired Persons. He is also a senior counselor at the US Navy Submarine Base in Groton, Conn., where he specializes in counseling newly widowed people.

**Elizabeth F. Spencer** ('45) is a retired professor of special education from Ball State University. She holds residence in Muncie, Ind.

**Henry S. McClintock** ('47) lives in Paris, Mo. He is retired and has seven children: Dena,

Gerald, Amy, **James H. McClintock** ('75), Lee, Mary, and Joseph.

**Clyde Burch** ('49) has recently retired as a judge in Shelby County, Mo. He is presently teaching at the University of Aberdeen, School of Law, in Scotland. Judge Burch will be providing a series of guest lectures at the University of Ulster, in Northern Ireland.

## 1950s

**Harold E. Coffman** ('52) and his wife, Carroll, live in New Caney, Texas. He is retired.

**Denzel D. Gunnell** ('54) resides in Yukon, Okla. He is an aviation safety inspector with the Federal Aviation Administration. Denzel has two children: Larry and Linda.

**Fred Gottman** ('57) and his wife, Sherry, live in Florissant, Mo. He is a quality consultant and she is an executive secretary for Christian Hospitals. The couple has two children: Laura and Gregg.

**E. Dean Trainer** ('58) and his wife, **Francetta Hoerrmann Trainer** ('58), make their home in Novinger, Mo. They are both retired and have two children: **Jeff K. Trainer** ('81) and Susan.

**James J. O'Connor** ('59) is retired and holds residence in Astoria, N.Y. He has one son, Patrick.



**1941 Reunion Brunch**—(l-r) Row 1: Luella Hardy Attebery, Helen Harrington Spees, Nellie Alexander Weger, Neva Shinn Bolton, Hope Greene Blaine, Joyce Wisman Rollins, Grace Burk Braxton, Wanita Loofbourrow Babb. Row 2: Richard White, Wayland Longwith, Harold Willis, Royal Beecher Spees, Charles Bethell, Ken Cooley, Neal Primm, Wilma Opel Wade, Elaine Gillum Eitel, LaRue Edrington Bondurant, Lucile Castagna Kurolvech, Marian Porter Sunnen. Row 3: Monte Peterson, Loren Estes, James Mudd, Victor Cochran, Wallace Farmer, Dean Rosebery, Wayne Hodges, Paul Kinkade, Marietta Jonas Jayne, Willard Chambers, Franklin Greene, Max Freeland.



**1951 Reunion Brunch**—(l-r) Row 1: Saralou Schrock Andereck, Robert Wares, Eldon Tietsort, Patricia Parsons Lintner, Mary Johnson Novinger, Marjorie Smith Summers. Row 2: Paul Andereck, Fred Hanes, Bailey Brown, David Lintner, Donald Payne, Raymond Goeke, Royal Wilson, Lyle Hellyer, Dave McGraw, Fred Veach.

## 1960s

### PUBLISHED

**Jean Donald West ('60)** has co-authored a book for young readers with her husband, **Delno West ('61)**, titled, *Christopher Columbus: The Great Adventure*, Atheneum (MacMillan), 1991. Jean is an educational intervention specialist at an "at risk" school in Flagstaff, Arizona.

**Delno West ('61)** has authored his fifth book, *The Libro de las profecias of Christopher Columbus*, University of Florida Press, 1991. Favorably reviewed recently in the New York Times Book Reviews, the work is a scholarly "en face" edition and study on one of Columbus's primary works. Delno is a professor of history at Northern Arizona University.

**J. Denton Tarbet ('61)** is vice president of engineering at Crane Hydro-Aire. He and his wife, Nylene, live in Santa Clarita, Calif. The couple has one son, Brandon, and a daughter, Carlyn.

**Lonna McComas Carlson ('62)** is a western regional sales manager with Social Issues Resources Series, Inc. Her husband, Daniel, is DIR Champus Serv. for Foundation Health Corp. They reside in Davis, Calif. Lonna has two children: **Sheri Hendren First ('85)** and Jana.

**Judith Tharp Geske ('62)** lives in Grand Junction, Colo. with her husband, Dr. Gerald Geske. Judith is an image consultant and Gerald is an Ophthalmologist. They have three children: Gail, Grant, and Todd.

**Terry Lantz ('62)** is the coordinator of Health and Physical Education at Rockwood School District. He resides in Chesterfield, Mo. with his wife, Sue, who is a teacher for the Rockwood School District.

**Felix Leman ('62)** makes his home in Edmonton, Alberta, Canada. He recently received his DFS from Goethe Institute in Rothenburg, Germany.

**Roger Soderman ('62)** lives with his wife, Carolyn, in Old Tappan, N.J. He is vice president and group publisher of New Century Communications, Inc. and she is a first grade teacher in Saddle River, N.J. They have five children: Erika, Inger, Kurt, Jonathan, and Joel.

**Donna J. Caldwell ('63)** is a special education resource teacher at Gasconade County R-II Schools. She holds residence in Owensville, Mo.

**Richard E. Cory ('63)** is a volleyball, basketball, and softball coach. His wife, Arvella, is self employed. They live in Grimes, Iowa and have two children: Lori and Richard.

**Edward Shepler ('63)** lives in North Zulch, Texas with his wife, Billie and two children: Lee Ann and Mikel. He is the principal at North Zulch ISD school and she is a homemaker.

**Carol Lynn Hartman Williams ('63)** lives in Keokuk, Iowa with her husband, Charles. She is a vocal and instrumental music teacher at Running Fox Elementary School in Kahoka, Mo. and he is employed with Job Service of Iowa. They have one child, Hila.

**Robert C. Corno ('64)** and his wife, Antonietta, live in Webster Groves, Mo. He is employed as a supervisor for Army Aviation Systems Command and she is a homemaker. They have three daughters: Gina, Angela, and Nicole.

**Bill Purdy ('64)** is the owner of Birchmore Resort and Campgrounds. His wife, Beatrice, is the owner of Birchmore Gift. The couple has four children: Beth, Patricia, Stephanie, and Chris. They make their home in Frazee, Minn.

**Barbara Biggar Greenbaum ('65)** resides in Sewell, N.J. She is employed as a cooking school director and instructor for Freelance Home Economist. She has two children: David and Michelle.

**Carol L. McCart ('65)** is dean and CEO at the University of Wisconsin at Marshfield. She holds residence in Marshfield, Wis. Carol recently received her Ph.D. from Pennsylvania State University.

**Dennis L. Wright ('65)** and his wife, Vicki, live in Hamilton, Ill. He is a high school principal and she is a fifth and sixth grade teacher, both at Hamilton C.U.S.D. #328. They have one son, Ryan.

**Lloyd S. Kasow ('66)** is a Medicare Coordinator for Empire Blue Cross and Blue Shield Medicare. His wife, Nancy, is an executive secretary for the Jewish Community Center of Syracuse. The couple resides in Cicero, N.Y.

**Patricia Bentrup Weinstein ('66)** is assistant director at Kirkendall Public Library. She resides in Ankeny, Iowa. She has two sons: Brian and Matt.

**Charles T. (Tim) Blickhan ('67)** and his wife, **Janice Pinnell Blickhan ('68)** make their home in De Kalb, Ill. He is a professor of composition and theory at Northern Illinois University and she is assistant director of De Kalb County Special Education Association. They have one son, Benjamin, and a daughter, Samantha.

**Linda L. Elsea ('67)** lives in Macomb, Ill. She is a high school counselor at Schuyler District #1.

**Wayne E. Naas ('67)** is an ESL teacher at American University. His wife, Renee, is an administrative assistant at the Academy for Educational Development. They make their home in Arlington, Va.

**Beatrice Busche-Myers Pietzsch ('67)** and her husband, Walt, reside in Sedona, Ariz. She is a child development advisor at Central Arizona College and he is a retired engineer.

**George Pinnell ('67)** is director of sales with Yaesu USA. His wife, Susan is an insurance agent with J. Renfro Insurance Agency. They hold residence in Fountain Valley, Calif. and have two children: Duncan and Jim.



1961 Reunion Brunch—(1r) Row 1: Julia Vail Doyle, Reva Cook, Marie Hook Snodgrass, Kay Daughtry Jennings Row 2: Note Mitchell, Lloyd Brown, Ron Hale, Jerry Hitt, Jim Blacklock, Louis Berrey, Ken Whisenand, Roy Stice, Wayne O'Neal, Richard Drace

**Elaine Edmundson Madsen ('68)** and her husband, William, make their home in Carter Lake, Iowa. She is a fourth-grade teacher with Council Bluffs Community Schools and he is a salesman. They have one son, William. Elaine received her master's in education from the University of Northern Iowa in 1991.

**Lonnie Stephenson ('69)** and his wife, **Virginia Daughterity Stephenson (69)**, live in Kansas City, Mo. He is a technology teacher at Oak Park High School and she is a sixth-grade social studies teacher at New Mark Middle School. They have two sons: Nate and Matt.

## 1970s

**Art W. James ('70)** is a teacher with Hemet Unified School District and his wife, Kristin, is a homemaker. They have two children: Jocelyn and Heather, and make their home in Hemet, Calif.

**Carolyn Blake Lund ('70)** and her husband, John, reside in Johnston, Iowa. She is a homemaker and former probation officer. He is a northern regional manager with U.S. West Paging.

**Betty Minor ('70)**, director of Des Moines, Iowa, Head Start Programs, has graduated from the Head Start—Johnson & Johnson Fellows Graduate Program at the University of California—Los Angeles. She was one of the 40 head start directors from throughout the U.S. selected to attend the course.

**Wanda F. Armstrong ('71)** holds residence in Ottumwa, Iowa. She is assistant district manager for the Social Security Administration.

**Charles Blakley ('71)** lives with his wife, Earnestine, and their two children: Charles Jr. and Andrew in St. Joseph, Missouri. He is a teacher and coach at St. Joseph Public Schools' Central High School.

**John W. Dedrick ('71)** is a farmer and commission salesman for Chillicothe Livestock Mar-

ket. His wife, Marsha, is a speech therapist. The couple lives in Chillicothe, Mo. with their three daughters: Elizabeth, Sharon, and Melissa.

**Russell G. Gilkes ('71)** works for Monona Wire Corp., as does his wife, Yvonne. They make their home in Postville, Iowa.

**Darwin Henderson, Ed.D. ('71)** is an associate professor of education at the University of Cincinnati.

**Gerald W. Leath ('71)** and his wife, Gail, reside in Appleton, Wis. He is a manufacturing engineer superintendent at Pierce Manufacturing.

**David L. Mc Vay ('71)** and his wife, Diane, live in Duluth, Ga. with their son, Cody. David is an art teacher and Diane is a math teacher, both at Gwinnett County Schools.

**Iris Hwang Ouyang ('71)** is a system analyst for Fel-Pro Inc. Her husband, Fred, is an engineer for Kemper Insurance. They have two children: Jeannette and Jeffrey, and live in Glenview, Ill.

**Nancy Thomas Venegoni ('71)** and her husband, John, make their home in Quincy, Ill. She is a chapter 1 director and director of testing for Quincy Public Schools and he is a psychologist.

**Edward L. Berry ('72)** resides in Kirksville. He is a farmer.

**Lucinda Gray Clark ('72)** and her husband, Daniel, hold residence in Hurst, Texas. She is an office education cooperative coordinator of the Fort Worth Independent School District and he is an assistant manager at Reliable Life Insurance Co.

**Lois Mayes Epperson ('72)** is a first-grade teacher at Fairview Public Schools. Glen, her husband, is a gang pusher at Phillips Petroleum. They make their home in Fairview, Okla. with their three children: Chris, Monica, and Angie.

**Joyce V. Klein ('72)** teaches eighth-grade mathematics for the Lincoln County R-3 Schools. She lives in Troy, Mo. with her son, Andrew, who she adopted from Guatemala in January of 1991.

**Sandra Dwyer Sullivan ('72)** lives with her husband, Patrick, in St. Peters, Mo. She is a primary physical education teacher at Francis Howell School District and he is vice president of governmental affairs at Home Builders Association. They have two children: Megan and Kelly.

**Anne Slattery Boedeker ('73)** and her husband, Rick, reside in Wentzville, Mo. She is a self-employed speech pathologist and he works for Reader's Digest. They have one daughter, Erin.

**Joy Van Meter Buchok ('73)** lives in Quincy, Ill. with her husband, Stephen. He is an anesthesiologist at St. Mary Hospital. They have two sons: Aaron and Andrew.

**Robert W. Fohey ('73)** and his wife, **Marcia Buckwalter Fohey ('77)**, reside in Palmyra, Mo. He is a principal with Marion County R-II and she is a teacher's aide with Marion County R-II. They have four children: Derek, Dax, Davin, and Danika.

**Louis W. Gregory ('73)** is CEO/President of Silver Pure-Bacteriostatic Water Systems. His wife, Linda, is an anchor reporter with Channel #2 Television Co., NBC-KPRC. The couple make their home in Houston.

**Gary L. Heinike ('73)** resides in St. Charles, Mo. He is a teacher with the Francis Howell School District. He has two daughters: Amy and Andrea.

**Steve Peterson ('73)** lives in La Mesa, Calif. and is a claims examiner for the State of California Disability Insurance.

**Russell E. Rogerson ('73)** and his wife, Cynthia, live in Riverside, Iowa. They have one daughter, Melissa, and a son, Ryan.



1971 Reunion Brunch—(l-r) Row 1: Brooke Williams Morehead, Barbara Ingram Melson, Jeanne Sparlin Smith, Janette Stoffa Felts, Sze Kew Chen Dun, Wanda Zeigler Hartsock, Barbara Martin, Elna Jones Williams Row 2: Robert Melson, Mike Morehead, Bill Walz, Victor Bally, Charles Gray, Kenneth Bounds, Richard Ball, Tony Mitchell, Gordon Mitchell, Millard Thomas

Russell is a warden at Iowa Medical and Classification Center and Cynthia is an R.N. at Mercy Hospital.

**Glenda Terrill ('73)** is a commercial underwriting supervisor at Royal Insurance Company from Overland Park, Kan.

**John R. Wilcox ('73)** is a veterinary medical officer in the USDA Veterinary Services. He lives in Cameron, Mo. and has three sons: John, Joseph, and Jacob.

**Gene Graham Good ('74)** and her husband, **Charles (Chuck) Good ('76)**, reside in Montrose, Iowa. She is a computer and business instructor at Central Lee Community School and he is a guidance counselor at Central Lee High School. They have two sons: John and Charles.

**Mac Nakamura ('74)** is a recruiting officer for the United States Peace Corps. He lives in Minneapolis, Minn.

**Dr. John W. Strazewski ('74)** is an assistant professor at Palmer College of Chiropractic. His wife, Susan, is an executive secretary at Palmer College of Chiropractic. They live in Eldridge, Iowa with their two sons: Joshua and Matthew.

**Lynn Browning Van Dolah ('74)** and her husband, Mark, hold residence in Kirksville. She is director of marketing at Laughlin Pavilion and he works for Southwestern Bell. They have two children: Carissa and Justin.

**Dennis R. Van Maaren ('74)** is an assistant secretary to General Staff- Protocol, HQ Sixth US Army Presidio of San Francisco. His wife, **Brenda Reimer Van Maaren ('74)**, is employed in sales at Kalleen Computer Products, Inc. They live in Petaluma, Calif. with their children: Kristofer and Nancy.

**Linda Pentecost Treasure ('74)** and her husband, Steve, make their home in Kirksville. They have three children: Matthew, Elizabeth, and Sarah. Linda is a regional program specialist for the Department of Mental Health at the Kirksville Regional Center for Developmental Disabilities.

**William R. Ward ('74)**, of Chicago, is a sales manager for Dania Furniture.

**Jennifer Smith Webb ('74)** recently married Joe W. Webb in May of 1991, while on horseback. She is a secondary math teacher for Macon R-I Public Schools and he is a middle school math teacher also for Macon schools. The couple have three children: Justin, Deidre, and Derek.

**David E. Bethel ('75)** and his wife, **Janis Lake Bethel ('78)**, make their home in Brashear, Mo. David is a professor of education at NMSU. Janis is a teacher with Knox County Schools. They have two sons: Adam and Ryan, and one daughter, Anne. David is currently working on his doctorate and hopes to complete it by December 1991.

**Christine White Boschert ('75)** lives in St. Peters, Mo. with her husband, Randall. She is a national/international trainer in vocational evaluation with Valpar International Corp. and he is in security with McDonnell Douglas.

**Linda McClain Brace ('75)** and her husband, Steven, live in Warrensburg, Mo. She is an L.D. teacher with Warrensburg R-VI Schools and he is director of Holdren Funeral Home. They have a daughter, Rebecca, and a son, Justin.

**Jocelyn Scott Bragg ('75)** and her husband, Jack, reside in Kirksville. He is a physician at KOMC and she is a homemaker. They have three children: Maegan, Elyse, and Thomas.

**Patty A. Byrum ('75)** is a sales representative for Avon and a freelance writer. She holds residence in Fruitland Park, Fla.

**Pamela Shriver Couser ('75)** is a special education and resource teacher at Anamosa Schools. Her husband, John, is an inspector with the Iowa Department of Transportation. They make their home in Marion, Iowa.

**Patricia Grovert Creech ('75)** and her husband, Michael, reside in Bloomingdale, Ill. with their son, Christopher. Michael is a general manager at Conam Inspection, Inc. and Patricia is on leave from teaching to be home with her son.

**Claire Riccelli Crnic ('75)** and her husband, **Charles A. Crnic ('78)**, live in Des Moines, Iowa. He is vice president at CIC Properties and she is a homemaker. They have four children: Tony, Nicky, Theresa, and Lisa.

**Larry Mihalevich ('75)** is manager and pharmacist at Drugtown. His wife, **Chris Smith Mihalevich ('76)**, is a homemaker. They live in Mt. Pleasant, Iowa with their three children: Jamie, Nick, and Emily.

**Linda Richman Mowl ('75)** lives in Muscatine, Iowa with her husband, Gary. She is an instructor of Developmental Education at Muscatine Community College and he is the manager of Term City Furniture.

**Pam Crutcher Prewitt ('75)** and her husband, Roger, reside in Moberly, Mo. with their children: Tara, Tyler, and Andy. Pam is a kindergarten teacher at Westran Elementary School and Roger is an operations technician for Columbia Foods.

**Eleanor Von Talge Snowbarger ('75)** and her husband, **Charles D. Snowbarger ('76)** make their home in Ottumwa, Iowa. She is a special education teacher for Ottumwa Community Schools and he is a D-TAC specialist with John Deere. They have two sons: Jacob and Joshua.

**Barbara Finke Deats ('76)** and her husband, Philip, live in Urbandale, Iowa. She is a secretary for Bituminous Insurance Company and he is an attorney, supervisor of appeals section for the State of Iowa. They have one daughter, Alyson.

**Diana Tremmel Eberts ('76)** lives in Tempe, Ariz. with her husband, Chuck, and their four children: Laura, Christopher, Patrick, and Jillian. Chuck is a manager and senior electrical engineer at Motorola.

**Pamela Kellogg Lewis ('76)** and her husband, James, reside in Cleburne, Texas. She is a homemaker and he is an engineer at Bechtel. They have two daughters: Monica and Cynthia.

**Alan P. Marshall ('76)** is superintendent at Harmony Community Schools. His wife, **R. Diane**

**Stone Marshall** ('77), is a science teacher with Revere C-3 Schools. They live in Farmington, Iowa with their children: Jason, Leslie, Amy, and Mallory.

**Jay C. Brakensiek** ('77) resides in South Pasadena, Calif. He is a safety officer with the Los Angeles County Department of Public Works. He has two sons: Gregory and Matthew. Jay received his master's in industrial hygiene from the University of Southern California in May of 1991. His biography was included in the 23rd edition of "Who's Who in the West."

**Henry (Hank) Emerson** ('77) holds residence in Springfield, Va. with his wife, Marilyn. He is a major in the US Air Force, chief of bands and music branch. She is a nurse.

**Merna Hunsley Gill** ('77) and her husband, Jag, make their home in Danville, Pa. with their two children: Alex and Andrea. She is a substitute teacher and he is administrator of operations at Geisinger Medical Center.



**Clarence Harmon** ('77) was named the Chief of Police for the City of St. Louis in September. Harmon's appointment is the first for a black in St. Louis. One of six candidates who were vying for the position to head the city's 1,500 member force, Harmon is a 22-year veteran of the force and had previously served as the commander of the bureau of administration and the acting police board secretary.

**Paula J. Melone, D.O.**, ('77) resides in San Ramon, Calif. and is assistant director of maternal-fetal medicine for the US Navy.

**Deborah K. Morris** ('77) is a teacher counselor for Boone County Group Homes. She is working on her master's in recreation at the University of Missouri and makes her home in Columbia, Mo.

**Michael W. Morrow** ('77) is a customs inspector and program officer for the US Customs Service and lives in Alexandria, Va.

**Debra Diederich Moss** ('77) and her husband, Wayne, reside in Chapin, S.C. She is a homemaker and he is an account representative for Nalco Chemical Co. They have a daughter, Laura.

**Robert E. Myers III** ('77) is employed in security at McDonnell-Douglas. His wife, Georgia, is a homemaker. They have two children: Robert and Jennifer, and live in Ferguson, Mo.

**Jerry O. Penniston** ('77) and his wife, **Cathy McElroy Penniston** ('69), make their home in Ottumwa, Iowa with their daughter, Amy. Jerry is a social worker with the Iowa Department of Human Services and Cathy is a court reporter for the Iowa Department of Justice.

**Kenneth J. Stark** ('77) is a III Corps Logistics Planner in the US Army. His wife, **Martha**

**Warden Stark** ('79) is a homemaker. Kenneth was deployed to Saudi Arabia from August until April. He met his newest son upon his return in April. The couple live in Harker Heights, Texas with their four children: Neil, Guy, Tyson, and Nolan.

**Mary Orf Zupan** ('77) and her husband, Bruce, make their home in Hartland, Wis. She is a music specialist for Kettle Moraine School District and he is a communications installer for Invecom Inc. They have one daughter, Gwen, and a son, Aaron.

**Debbi Dailing Bradley** ('78) lives in Mexico, Mo. with her husband, Dennis, and four children: Derrick, Dara, Darren, and Damion. Debbi is a production auditor with A. B. Chance Company and Dennis is a transmission technician for Central State Transmission.

**Sheila Rood Brown** ('78) teaches first year nursing students at Southwestern Community College. Her husband, Jerry, is a farmer. They hold residence in Clearfield, Iowa and have two children: Brooks and Amber.

**P. Douglas Carlson** ('78) is an assistant manager for Hy-Vee Food Store, Inc. His wife, Janice, is an accountant for Air Conditioning Utilities, Inc. They live in Mankato, Minn. and have three children: Kristina, Sara, and Andrew.

**Thomas J. Counts** ('78) is a regional property representative for CNA Insurance Companies. His wife, Leigh, is an optometrist. They make their home in Reading, Pa.

**Mark S. Jorgenson** ('78) and his wife, **Rebecca Powell Jorgenson** ('78), reside in Roswell, Ga. He is manager of commercial lines at USF & G Insurance. Rebecca has completed work on her master's except for her thesis at Iowa State University in Ames, Iowa. They have two sons: Matthew and Brian.

**Rexenne Lowes** ('78) and her husband, **Michael Lowes** ('85) live in Harrodsburg, Kentucky with their two children: Gregory and Audrey. She is a teacher's aide at Burgin School and Michael is a territory manager at Smith Kline Beecham Animal Health Company.

**John F. Mitalovich** ('78) and his wife, **Monique Van De Wiele Mitalovich** ('84), live in St. Louis with their daughter, Amber. He is employed in Safety and Security at St. John's Mercy Medical Center. She is a social service worker for the Missouri Division of Family Services.

**Lisa Davis Price** ('78) and her husband, **Charles W. Price** ('80), hold residence in Ozark, Mo. She is a homemaker and he is a sales representative for Bowlus School Supply. They have one daughter, Chrystal, and a son, David.

**Dr. Philip Whitecar** ('78) has been appointed assistant professor of family practice at Wright State University School of Medicine. He resides in Beaver Creek, Ohio.

**Cindy Rudolph Bochantin** ('79) is a pretrial services officer with the United States Pretrial Services Office in St. Louis. Her husband, Stephen, is a store manager for McDonald's

Restaurant Corp. They have two children: Matthew and Grant, and reside in St. Peters, Mo.

**Della Yager Cochran** ('79) is a gifted program teacher at Westran Public Schools. She and her husband, John, live in Moberly, Mo. with their three children: Brett, Cassie and McLean.

**Rev. Jeanne Lischer** ('79) of Carlinville, Ill. received her Master of Divinity from United Theological Seminary in 1990. She is the pastor of St. Paul's United Church of Christ.

## In the News



**Donna L. Morrison** ('79) has been appointed assistant vice president of financial and local billing systems at Sprint/United Telecom. Morrison joined Sprint/United in 1989 as a director of billing services for the Local Telecommunications Division and was named director of human resources information systems in April 1990. Before joining Sprint/United Morrison was with Martin Marietta for more than eight years in a series of technical positions of increasing responsibility in Denver and Chantilly, Va. She also was with the Thiokol Corporation for two years. Morrison has done graduate work at the University of Colorado. She resides in Overland Park, Kan.

**Stacy Smith Nation** ('79) lives in Pittsfield, Ill. with her husband, Gary, and three children: Brian, Lora, and Paul. Stacy is a homemaker and Gary is a farmer.

**Larry Nothnagel** ('79) and his wife, **Janet Westphal Nothnagel** ('83), make their home in Bartlett, Ill. He is a teacher and athletic director for Roselle School District and she is a homemaker. Larry is also the international secretary for Delta Chi Fraternity. They have two children: Brandon and Hayley.

**Susan Nahmensen O'Brien** ('79) is a domestic engineer. Her husband, Thomas, is vice president of O'Brien Construction. They hold residence in Florissant, Mo. and have three children: Casey, Shanna, and Melissa.

**Randa C. Rawlins** ('79) is an attorney with Niewald, Waldeck, and Brown. She lives in Fairway, Kan.

**Becky Sarris** ('79) resides in St. Joseph, Mo. and is a title searcher with American Land Title in Kansas City, Mo.

**Gary M. Young** ('79) is a security police superintendent with Missouri Air National Guard. He makes his home in St. Louis.

## 1980s

**Antony Aberson** ('80) is the 3rd class petty officer mess management specialist for the U.S. Navy.

**Judy Kriegshauser Blacksmith** ('80) and her husband, Mark, live in LaPlata, Mo. with their



**1981 Reunion Brunch**—(1-r) Row 1: Margaret Hiatt Schneider, Sherry Benskin, Goldie Baughman, Sherri Sutherland, Kathy Iman, Jeanne Krautmann, Kathy Carson Elsea, Sheryl Elmore Malloy Row 2: Douglas Mathias, Steven Kreyling, Jackie Flesher, Becky Hendrickson, Tammy Greiner, Bob McCormack, Debra Moore McCormack, John Nollen, Diane Tague Decker, Cynthia Johnson Gregory, Patty Kruse Obrecht, Gina Ziegemeier Hoffman, Pam Ford, Ruth Selby Kielczewski, Sue Magers Barrett Row 3: Steve Deters, Kevin Dunn, Randy Hultz, Larry Lunsford, Dennis Reidenbach, Mike Pappas, Cheryl Johnson Bright, Linda Ladendecker Corley, Don Kaska, Maria Evans, Hazel Douglas, Gayla Thurman Finch, Greer Hiltabidle Kilpatrick, Kathy Wittmayer Crisp, Richard Bowers, Ken Neff

son, Cory. Judy is a volunteer at Community Day School and Mark works for Hollister, Inc. in machine maintenance.

**Paul W. Brown ('80)** and his wife, **Patricia Wilsdorf Brown ('81)**, make their home in Kansas City, Mo. Paul is a chemist for Marion Merrell Dow. Patty wrote a textbook titled "Ready-to-Wear Apparel Analysis" which was published by Macmillan. They have a daughter, Rachel.

**Jenci Grogan Buesing ('80)** is a junior high P.E. teacher and coach for Uvalde Consolidated Independent School District. Her husband, Hal, is a high school science teacher and coach for Knippa Independent School District. They reside in Knippa, Texas.

**Patricia Blackaby Carrington ('80)** and her husband, Nathan, make their home in Englewood, Colo. She is a homemaker and he is the district casualty claims manager for American Family Insurance. They have two children: Beth and Jimmy.

**Bradis Jimmerson ('80)** is a buyer's assistant at A and S Department Store. She holds residence in Brooklyn, N.Y.

**Jeffrey Leptak ('80)** is a senior lecturer and researcher at the Jamaica School of Drama. He lives in Jamaica.

**B. Milene Hollon Mittelhauser ('80)** and her husband, Jeff, make their home in Sedalia, Mo. She is a homemaker and he is a prosecuting attorney for Pettis County. They have two children: Davis and Cooper.

**Sandra J. Pacha ('80)** resides in Xinjiang in the People's Republic of China. She is a foreign expert-English teacher to college students studying to be high school English teachers.

**Catherine Westfall Romine ('80)** is a consultant community health nurse for the Department of Health. She has two sons: William and Jerod, and lives in Jefferson City, Mo.

**Tammy White Rupp ('80)** and her husband, John, make their home in Quincy, Ill. She is on the office staff at McNay Truck Line

and he is a brick layer for Rupp Masonry.

**Sarah Meneely Schad ('80)** is a homemaker and substitute teacher. Her husband, Dennis, is director of Morgan County ASCS Office of the USDA. They live in Barnett, Mo. with their children: Amanda, John, and Lauren.

**Mary Stanley ('80)** lives in Atlanta. She is a physical therapist at Scottish Rite Children's Medical Center.

**Shelly Ragan St. Clair ('80)** and her husband, **Darrell E. St. Clair ('80)**, hold residence in Holts Summit, Mo. He is a consumer service representative. They have two children: Dallas and Betsy.

**Michael C. Barfield ('81)** and his wife, Rhonda, make their home in St. Charles, Mo. He is the art director at Virginia Publishing in St. Louis and she is a homemaker. They have three children: Eric, Christian, and Lisa.

**Leanne Payne Brown ('81)** and her husband, Randal, live in Lenexa, Kan. She is a cruise agent with International Tours and he is a manager at Wal-Mart.

**Wilbur Chapman ('81)**, Navy Lt., recently reported for duty at Naval Transportation Management School in Oakland, Calif.

**Mary Donovan ('81)**, minister of Christian education at St. Paul's United Methodist Church in Cedar Rapids, Iowa, was consecrated a diaconal minister of the United Methodist Church. She was also certified as a minister of Christian education.

**Cheryl Stark Hibbard ('81)** and her husband, Marc, live with their two children: Joshua and Peter in Richland, Missouri. She is a homemaker and substitute teacher. Marc is a minister at Missouri West United Methodist Conference.

**Annicc Howell McGee ('81)** makes her home in Springfield, Ill. with her husband, Darren, and two children: Nathan and Kristen. Annicc is an auditor with the Illinois Department of Revenue and Darren is a CAD systems technician for Stewart Warner Hobbs Corp.

**John P. Meng ('81)** is an account executive for Apple Computer. His wife, Pamela, is a flight attendant for TWA. They have two children: Daniel and Sarah, and hold residence in St. Louis.

**Dennis G. Moore ('81)** and his wife, Elizabeth, make their home in Des Moines, Iowa. He is a teacher for West Des Moines Community School District and she is a veterinarian at the Hickman Road Veterinary Clinic. They have one son, David.

**Beverly Bowling Oliver ('81)** is an OB/GYN nurse practitioner for Planned Parenthood of NE Missouri. Her husband, Ronnie, is owner and manager of Lancaster Lumber. They reside in Lancaster, Mo. with their three sons: Nicholas, Matthew, and Christopher

**Laurel Smith Orr ('81)** and her husband, Roger, live in Skiatook, Okla. Laurel is an animal health technician at Marina Animal Clinic and Roger is a sales representative for McKesson.

**Renee Hoewing Roberson ('81)** and **Steven F. Roberson ('81)** make their home in Bloomington, Ill. She is a research assistant at Chestnut Health Systems and he is a programmer and analyst for State Farm Insurance.

**Sherrie Klyn Roberts ('81)** and her husband, Ron, reside in Ottumwa, Iowa with their children: David, Daniel, and Dana. Sherrie teaches piano and Ron is a buyer for Everco Industries.

**Edward Segalla ('81)** and his wife, **Kathryn Wehling Segalla ('83)**, live in Eules, Texas. Ed is a field training manager at Rent A Center. The couple has three children: Christel, Billy, and Brian.

**Valerie McHargue Sieverling ('81)** lives in Kansas City, Missouri with her husband, Joseph. She is an associate attorney with McDowell, Rice and Smith. Joseph is a senior supervisor at Coopers & Lybrand.

**Brigitte St. Clair Anthony ('82)** and her husband, Mark, hold residence in Columbia, Mo. She is a training and development specialist with the Missouri Department of Revenue and he is employed by ABC Labs.

**Chris Rawlings Bouquet** ('82) lives with her husband, **Robert Bouquet** ('83), in Maryland Heights, Mo. He is a manager at SBC Assent Management Inc., which is a subsidiary of Southwestern Bell. They have a son, David.

**Shellee Cates Brouhard** ('82) is a speech and language pathologist at Baptist Medical Center. Her husband, Donnie, is a service manager for Goodyear. They reside in Independence, Mo.

**Bill Buckner** ('82) and his wife, Kathy, live in Woodbridge, Va. He is employed as a public affairs officer to the Secretary of the Army and she is a teller at Souran Bank. They have two daughters: Kristin and Lakesha.

**Crystal M. Dietiker** ('82) married William Goldkamp in September of 1990. They live in Defiance, Mo. Crystal is a communications associate for The United Way of Greater St. Louis and William is an engineer for Jacobs Engineering.

**Cindy Beatty Harper** ('82) and her husband, Marty, live in Columbia, Mo. with their three children: Tara, Chelsea, and Kellen. Cindy is an administrative assistant at MU for the Biological Sciences. Marty is employed by Coil Construction.

**Larry A. Hoff** ('82), his wife, **Pamela Christensen Hoff** ('82), and their three sons: Joseph, Tony, and Ryan, live in St. Paul, Mo. Larry is a project manager for Johnson Controls in St. Louis and is planning to complete a master's in electrical engineering at Southern Illinois University in Spring 1992. Pam is staying home with the children after teaching for eight years.

**David W. Hearst** ('82) is a manager at Southwestern Bell Telephone for installation and repairs. His wife, Stacy, is a court reporter. They reside in St. Charles, Mo.

**Beverly Hall Holloran** ('82) is a child care director and homemaker. Her husband, James, works with computers for McDonnell Douglas. They live in Brentwood, Mo. with their daughter, Amanda.

**Keith C. Jones** ('82) and his wife, **Lori Bragg Jones** ('84) make their home in Onalaska, Wis. She is the purchasing and inventory coordinator at ORC Industries, Inc. He is an assistant professor of marketing at the University of Wisconsin-LaCrosse. He has finished all the work except his dissertation toward a Ph.D. at Memphis State University.

**Pamela Smith Kimmich** ('82) lives in St. Louis, Missouri with her husband, David, and their two children: Douglas and Matthew. David is a chemical engineer at Mallinckrodt.

**Ted R. Lymer II** ('82) is an optometrist at Lymer-Sloan Vision. His wife, **Laura Turner Lymer** ('83), is a homemaker. They live in Trenton, Mo. with their two children: Audrey and Aaron.

**Joseph Pappalardo** ('82) was named an officer at the Northern Trust Company, Chicago. He serves in the Global Systems Division of Trust Operations.

**Bill S. Pinkerton** ('82) and his wife, **Lisa Ryals Pinkerton** ('83), hold residence in Overland Park, Kan. They have one daughter, Sara. He is a district manager at Prudential Insurance Co.

Lisa serves as treasurer for the NMSU Kansas City Alumni Chapter.

**Lu Ann Donahue Rupp** ('82) lives with her husband, Robert, in Keokuk, Iowa. She is a secretary at Keokuk Abstract and Title Company. He is a waste water treatment technician for Ogilvie Mills Inc. They have one daughter, Erica.

**Elizabeth Van Abel Schmidt** ('82) lives with her husband, Gary, in Appleton, Wis. She is a homemaker and he is an account executive with MCI Telecommunications. They have two daughters: Carolyn and Mary, and a son, Michael.

**Diana Griffith Sinclair** ('82) and her husband, Stan, reside in Haubstadt, Ind. He is a quality assurance manager at Excel-Emge. They have two sons: Andrew and Jacob.

## In the News



David Clithero ('83)

has been appointed planned giving officer at Washington University in St. Louis. Clithero was formerly director of alumni-development at Northeast Missouri State University. A native of Vandalia, Mo., he graduated from Northeast in 1983.

**Pamela Backe Anderson** ('83) and her husband, **Stephen Anderson** ('83), make their home in Springfield, Mo. She is a third-grade teacher for Springfield R-12 School District and he is a manager at Aldi. They have a son, Matthew.

**Brenda Brammer Arnold** ('83) lives with her husband, Jonathan, in Alexandria, Mo. She is a WIC dietician at Southeast Iowa Community Action Organization. He is pursuing a degree in journalism at Western Illinois University.

**Roma Nelson Beeson** ('83) and her husband, **David W. Beeson** ('86), live in Lesterville, Mo. She is a substitute teacher for Lesterville R-IV Schools. He is a P.E. and social studies teacher and coach at Lesterville R-IV Schools. They have a daughter, Brooke.

**Laura McKay Cooke** ('83) is a counselor at Sedalia Middle School. Her husband, Herbert, is a Union Pacific Railroad signalman. They make their home in Lincoln, Mo.

**Jeanne Davenport Crowwhite** ('83) lives with her husband, David, in Gladstone, Mo. She is an R.N. in the Neonatal Intensive Care Unit at Children's Mercy Hospital and he is a systems analyst for Hallmark Cards. They have one son, Kyle.

**Tammy Rollins Donelson** ('83) and her husband, Brian, reside in Princeton, Mo. She is a business teacher at North Mercer R-3 and he is a farmer. They have two children: Wayne and Tyson.

**Greg C. Hennenfent** ('83) and his wife, Mary, live in St. Peters, Mo. with their daughter,

Samantha. They are both teachers in the Francis Howell School District.

**Margaret Howell Hutzell** ('83) and her husband, Mark, make their home in Lincoln, Neb. She is a merchandiser for Nabisco Brands and he is a bakery manager at Hy-Vee Food Stores. They have two daughters: Meg and Paige.

**Susan Falk Jacobson** ('83) and her husband, Michael, hold residence in Clarksville, Tenn. She is a homemaker and he is a physician in the US Military. They have one son, Joshua. The family is enrolled in a home education program and Susan is a home teacher to her son.

**Sarah Baker Lorenzen** ('83) is an account manager with Kirke Van Orsdel, Inc. Her husband, Thomas, is a teacher and coach at St. Anthony's School. They live in West Des Moines, Iowa.

**Tim Meneely D.O.** ('83) and his wife, Nancy, reside in Beville, Texas. He is a senior medical officer for the US Navy. They have three children: Anthony, Meagen, and Caitlin.

**Julia Kiley Rieck** ('83) makes her home in Chesterfield, Mo. with her husband, **David M. Rieck** ('84), and their son, Nicholas. David is a sales representative with Walsworth Publishing Company.

**Karen Kayser Stevens** ('83) lives in Davenport, Iowa with her husband, Wayne. She is an assistant controller for St. Luke's Hospital and he is a mechanical engineer at the Rock Island Arsenal.

**Mary Willingham** ('83) is a computer systems associate for the Coordinating Board for Higher Education. Edward Oringderff, her husband, is self-employed. They hold residence in Columbia, Mo.

**Joan Troutman Bullion** ('84) is a third-grade teacher at Whiting School District. Her husband, Ian, is assistant personnel manager at Sioux Tools. They make their home in Sergeant Bluff, Iowa.

**Tim Farris** ('84) is a plant engineer at Bandag. His wife, **Dawn Bratcher Farris** ('84), is a homemaker. They live with their two sons: Connor and Trevor, in Muscatine, Iowa.

**Tammy Whitson Heriford** ('84) resides in Baxter, Iowa with her husband, Todd, and two children: Abbey and Erik. She is a special education teacher with Newton Community School District and he is a laborer for Maytag.

**Laura McLearn Krehbiel** ('84) and her husband, Willis, make their home in Donnellson, Iowa. She is an attorney with Anderson and Krehbiel, and he is a self-employed electronic technician. They have one daughter, Allison.

**Tamara S. Kuddes** ('84) is a library media specialist for the Washington School District. She holds residence in Washington, Mo.

**Susan Hardy Mathison** ('84) is a teacher in Windsor, Conn. where she lives with her husband, William. He is a nuclear training engineering instructor at ABB Combustion Engineering. They have a son, William, and a second child is due in March of 1992.

**Richard Millikan** ('84) and his wife, Gail, live in Ladson, South Carolina. Gail is an elementary teacher.

## NOTES

- Deborah Hays Raleigh ('84)** and her husband, David, reside in LaPlata, Mo. She is a freelance writer and he is program coordinator at Laughlin Pavilion. They have two children: Chancellor and Alexander.
- Jan Boshart Shelman ('84)** and her husband, Randy, live in Winfield, Iowa with their daughter, Brittany. Jan is a foster care social worker for the Young House Family Services-Burlington Iowa. Randy is a farmer.
- Gaye Schoettle ('84)** lives in Humble, Texas. She is currently seeking a Ph.D. in clinical psychology.
- Lillian May-Vickery ('84)**, a research assistant in the pharmacology department at St. Louis University Medical Center, was awarded a Meritorious Technician Award at St. Louis University School of Medicine's second annual Biomedical Awards Program.
- Sharon Scheidegger Wilson ('84)** is a nursing student. Her husband, Jon, is a physician in the US Army. They live in Ft. Leavenworth, Kan. with their three children: Shelby, Zachary, and Jon.
- Ronald L. Boling ('85)** is a law clerk to the Honorable Clifford Ahrens at the Missouri Court of Appeals in the Eastern District. His wife, Melody, is a clinical social worker at St. Anthony's Medical Center. They have one son, Stewart, and live in St. Louis.
- Beverly Hartoebben Casady ('85)** and her husband, **Duane D. Casady ('87)**, live in Maryville, Mo. Beverly is a music director at Union Star R-2 Schools, Union Star, Mo. Duane is a high school science teacher and full time graduate student at Northwest Missouri State University in Maryville. He is working towards a master's in computer science.
- Katrina J. Cessna ('85)** resides in Bloomington, Ind. She is a ballet instructor/arranger at Indiana University Department of Bands and a trainer at McDonalds. She recently received her master's in music from Indiana University in Bloomington.
- Terry L. Clarkson ('85)** is an electrician at Webco Engineering. His wife, Tresa, is a cosmetologist. They make their home in Rogersville, Mo. with their sons: Timothy and Brent.
- Janie E. Dunn ('85)** lives in Lansing, Mich. She is in her second year at Thomas M. Cooley Law School.
- Frances R. Franklin ('85)** is a math teacher at Carolina Christian Academy and resides in Thomasville, N.C.
- Glenna R. Gates ('85)** holds residence in Trenton, Mo. where she is a first and second grade teacher.
- G. Lynn Dresser-Levine ('85)** and her husband, Martin, make their home in St. Louis. She is employed by Eddie Bauer as a store manager and he is on the buying staff at Edison Bros.
- JoEllen Potchen ('85)** is a learning disabilities resource teacher for Francis Howell School District. She resides in St. Charles, Mo.
- Patti Ruskey ('85)** is a supportive living coordinator for H.M.C. She lives in Mankato, Minn.
- Morning Shu ('85)** is the manager of the electronic learning lab at San Jose State University. She lives in Hercules, Calif.
- David Smail ('85)**, of Chicago, Ill., is a respite services supervisor at Park Ridge Youth Campus.
- Mark A. Thompson ('85)** and his wife, **Sara De Joode Thompson ('85)**, live with their son, Patrick, in Costa Mesa, Calif. Mark is an attorney with Rutan and Tucker.
- Arlinda Noel Warren ('85)** is a marketing account executive for Christian Health System of St. Louis. She is currently enrolled at St. Louis University in the MBA-MHA program. Her husband, Tom, is territory sales manager for Queen Carpet Corporation. The couple make their home in St. Charles, Mo.
- William P. Akers ('86)** lives in Blaine, Minn. with his wife, Monica. He is territory manager for Kellogg Sales Company and she is a teller at Norwests Bank. William is currently working on a master's in marketing at the University of St. Thomas in St. Paul, Minn.
- Mark Ackerson ('86)** is a flight attendant for Northwest Airlines, Inc. He lives in Chicago.
- Michele Mooney Alexander ('86)** lives with her husband, Mark, in Columbia, Mo. She is personnel manager at K-Mart and he is a student.
- Margaret Hemann Brooke ('86)** is a child life specialist at Holy Cross Hospital. Her husband, Charles works for Fiber Clean of Washington. They make their home in Olney, Maryland.
- Michelle Brown ('86)** lives in St. Louis. She is an inventory control administrator for Knight's Ltd. Catalog.
- Joa M. D'Almeida ('86)** works for Twentieth Century Investors in account services. She resides in Raytown, Mo.
- Jeanine R. Dalton ('86)** received her O.D. from University of Missouri at St. Louis School of Optometry. Her husband, Joseph, is a retail sales manager of Fresh Fish Company. Jeanine is working as an optometrist. They make their home in Florissant, Mo.
- Stan Dippel ('86)** and his wife, **Lisa Nolte Dippel ('89)**, live in Mason, Mich. Stan is an investment representative with Edward D. Jones and Co. and Lisa is a human resources coordinator with Inco Development Corporation.
- Barry A. Doublestein ('86)** is executive director of GA Osteopathic Hospital Inc. His wife, Vivian, is a musician. They live in Shellville, Ga. with their three children: Jeremy, Sean, and Whitney.
- Sondra E. Folsom ('86)** lives in Fort Meade, S.D. She is a personnel management specialist at Veterans Administration Medical Center.
- Syed A. Hasan ('86)** is a computer operator at Walgreens Co. His wife, Glenda, is an administrative secretary at Webster University. They make their home in Rolling Meadows, Ill.
- Tammy Winger Keck ('86)** and her husband, Tom, live in Ottumwa, Iowa with their two children: Brian and Dana. Tammy is the personnel director and Tom is the mechanical estimator at Winger Contracting Company.
- Terry King ('86)** and his wife, **Elaine Catron King ('86)**, live in Raytown, Mo. He is an account manager with Symons Corp. and she is an insurance agent with Sav-On Auto Insurance.
- Deborah Husted Kline ('86)** is an administrative assistant for Hallmark Cards. Her husband, **James Kline ('87)**, is employed by Security Pacific/RTC. They live in Blue Springs, Mo. with their daughter, Olivia.
- M. Caroline Laughlin-Wright ('86)** resides in Las Vegas with her husband, Martin. She is a flight attendant with Northwest Airlines, Inc. He is a certified financial planner/stockbroker trainee at IDS/American Express, Inc.
- Jim Lebron ('86)** lives with his wife, Stephanie, and two sons: Sean and Jonathan, in San Simon, Ariz. He is a teacher with the San Simon School District.
- Robin Ochiltree Mason ('86)** is manager at Charming Shoppes. Her husband, Randolph, is a student at NMSU. They hold residence in Kirksville.
- Julie A. Mattingly ('86)** resides in Jefferson City, Mo. with her son, Gabe. She is an associate in the paint department at Sears. Julie is currently attending graduate school at University of Missouri at Columbia.
- Corrine Anderson McCune ('86)** and her husband, Gordon, live in Hallsville, Mo. She is head nurse in MICU at Harry S. Truman V.A. Hospital in Columbia, Mo. He is a labor foreman for Paving Company. They have a new daughter, Ariel, born in May of 1991.
- Christine R. Morabito ('86)** makes her home in Milwaukee and is a salesperson for Jostens.
- Stephen J. Meinen ('86)** is an elementary principal and district curriculum director for Brandon Valley School District No. 49-2. He resides in Brandon, S.D.
- James C. Morgan ('86)** and his wife, **Carla Peal Morgan ('86)**, live in Colorado Springs, Colo. They have one son, Joshua, and were expecting their second child in October of 1991. James is a cadet instructor at the USAF Academy.
- Diane Olson ('86)** is an English teacher for Wayne Community Schools in Corydon, Iowa. Her husband, Michael Schroeder, is an electronic designer for Shivers, Inc. in Corydon, Iowa. They hold residence in Humeston, Iowa.
- Kevin D. Paulson ('86)** resides in Lexington, Ky. He is a technical engineering writer for the US Army Readiness Support Activity.
- Catherine Perry Petersen ('86)** and her husband, Thomas, live in Cedar Rapids, Iowa. She is a marketing assistant for Aegon, USA and he is a corporate communications coordinator with Iowa Electric Light and Power.
- Mike Pfannebecker ('86)** is a marketing representative for Great American Insurance. His wife, Melissa, is an account representative with Atlantic Insurance. They reside in Fuquay Marina, N.C.
- Todd Rider ('86)**, of Overland Park, Kan., is supervisor of technical support for Marley Pump Co.

- Cynthia Mathews Runser ('86)** is a medical technologist at Boone Hospital Center. Her husband, Charles, is manager at Thermalcraft. They live in Columbia, Mo.
- Jodene (Jodi) Richards Schierbecker ('86)** and her husband, Paul, make their home in Rock Hill, Mo. She is a computer lab coordinator and he is an accountant for Washington University School of Medicine.
- Shawn P. Smith ('86)** lives in Wheaton, Ill. with his wife, **Sharon Schoenig Smith ('87)**, and daughter, Kelly. Shawn is an account manager with Kendall Healthcare and Sharon is in an administrative position with I.V. Support Systems.
- Brian S. Strough ('86)** and his wife, **Angela Giboney Strough ('90)**, make their home in Columbia, Mo. He is a computer scanner with Mega Market and she is an activity aide with Fulton State Hospital. Brian is currently working on his master's in counseling at NMSU.
- Christopher J. Turner ('86)** and his wife, Kayleen, hold residence in West Liberty, Iowa. He is an Iowa State Patrol trooper and she is a kindergarten teacher at West Liberty Community Schools.
- Terry Armentrout ('87)** is a state trooper with the Wisconsin State Patrol. He and his wife, Paula, live in Mosinee, Wis.
- Matthew Bentz ('87)** holds residence in Pella, Iowa with his wife, Colleen. He is scheduling supervisor with Rolscreen Company and she is a certified dental assistant. They have a son, Andrew.
- Mark R. Cummings ('87)** resides in Cashton, Wis. He is regional director of National Catholic Rural Life Conference.
- Dian Darrah ('87)** holds residence in Overland Park, Kan. She is a claims representative for Fireman's Fund Insurance.
- Particia Farrell Dixon ('87)** and her husband, Douglas, live in Derry, N.H. She is office manager for Dr. Scott Copeland. Douglas is a cable splicer with North Country Splicing.
- Matt Gildehaus ('87)** is a marketing manager at Enduro Binders and lives in Ballwin, Mo.
- Gregory A. Keller ('87)** and his wife, Lisa, make their home in Walcott, Iowa. He is a patrolman with the police department of the city of Davenport.
- Rodney W. Kennard ('87)** is an executive officer with the US Army. His wife, Lori, is a medical records administrator with 97th General Hospital. They hold residence in St. Louis.
- Susan LaGrassa ('87)** lives in Coralville, Iowa. She is a graduate student at the University of Iowa and is pursuing a Ph.D. in mathematics.
- Shirley Wiseman Lake ('87)** lives in Bowling Green, Mo. with her children: Ashton and Tyler. She teaches vocal music to grades kindergarten through sixth for the Louisiana R-II School District.
- Jeffrey A. Lancial ('87)** and his wife, Janet, live in Ottumwa, Iowa. He is a math and computers teacher at Eddyville High School and she is a paralegal with Keith, Orsborn, Milani, Neary, and Bauerle Law Firm.
- Joan Slater Mast ('87)** is a high school mathematics teacher for Quincy Public School District #172. Her husband, Charles, is a body man and painter with Gully Transportation. They make their home in Quincy, Ill.
- Kim Powell Mez ('87)** and her husband, **Joel E. Mez ('90)**, reside in Seattle. She is a medical sales representative with Nutricia and he is an illustrator for Christensen O'Conner Johnson Kindness Law Firm.
- Valerie L. Myers ('87)** is the director of Mile High Child Care and lives in Wheat Ridge, Colo.
- Karen E. Neubauer-Henke ('87)** received her degree from KCOM in 1991. She is an intern at Metropolitan Medical Center. Her husband, **David J. Henke ('87)**, is employed by Speedway Auto. The live in Florissant, Mo.
- William E. Newburry ('87)** resides in St. Louis. He is a contracts administrator at McDonnell-Douglas. In September, he completed his master's in international affairs at Washington University. In October, he presented a paper, "Fighting Tigers - The Future of the Semiconductor Industries in Taiwan and South Korea", at the annual Third World Development Conference in Philadelphia.
- Terry Persell ('87)** is a CAD technician at Sunbeam Plastics Corporation. He lives in Evansville, Ind.
- Paul Resnick ('87)** resides in Peoria, Ill. and is an English instructor at Illinois Central College.
- Tim A. Scherrer ('87)** is facilities supervisor at NMSU and lives in Kirksville.
- Denise Welch Scott ('87)** and her husband, Randall, hold residence in Jacksonville, Ill. She is an insurance rater for John Deere Insurance and he is an environmental specialist with the Department of Military Affairs.
- Amy Wood Thompson ('87)** lives in Kirkwood, Mo. with her husband, **Darren Thompson ('87)**. She is a part-time instructor at St. Louis Community College at Meramec and he is a theatre supervisor at St. Louis Community College at Meramec.
- Randy Budd ('87)** has recently been promoted to director of bands at Concord College in Athens, W.V. **Loretta Stotts Budd ('88)**, his wife is a news anchor at WVVA-TV in Bluefield, W.V. She recently won the West Virginia Associated Press Award for "best documentary" for a series she did on Operation Desert Shield. She spent two weeks in Saudi Arabia just one month prior to the Gulf War.
- Nancy Hodkins Tucker ('87)** is an elementary administrator for Wayne Community Schools. Her husband, Dale, is the owner of Halferty Trucking. They make their home in Corydon, Iowa.
- Aaron L. Travis ('87)** received his D.O. from KCOM in 1991 and is doing his internship at Riverside Osteopathic Hospital. He resides in Woodhaven, Mich.
- Teresa M. Visnaw ('87)** lives in St. Louis and is a teacher at St. Jerome School.
- Lisa Pressler Zangriles ('87)** lives with her husband, **Gust (Tom) Zangriles ('87)**, and son, Alexander in St. Louis. She is a third-grade teacher in the Clayton School District. Tom works in Engineering Business Management for McDonnell-Douglas.
- Melanie Breaker Buechler ('88)** married Dale N. Buechler in September of 1991 in Salt Lake City. She is a computer programmer/analyst for the Department of Veteran Affairs and he is a clinical engineer in radiation oncology at the University of Utah Hospital. The couple makes their home in Salt Lake City.
- Duane Chwascinski ('88)** is a claims representative for Farmer Insurance Group. His wife, Karen, is a stationperson for Union Electric. They live in Marthasville, Mo.
- Lori A. Davis ('88)** is a speech and language pathologist with SPV - Board of Cooperative Educational Services. She resides in Ft. Morgan, Colo.
- Kenneth M. Dodd ('88)** and his wife, **Michelle Brassfield Dodd ('90)**, live in West Des Moines, Iowa. He is a service analyst for Ryko Manufacturing Company and she is a kindergarten teacher for the West Des Moines Community School District.
- Daniel V. Freeland D.O. ('88)** is a general medical officer with the US Air Force. His wife, **Teresa Diego Freeland ('89)** is a student at the University of Texas. She is pursuing a master's in cello performance. They live in Austin, Texas.
- Marilyn Dykstra Gann ('88)** married James Gann in July of 1991. They live in Boonville, Mo. She is a soil conservationist for the USDA-SCS and he is secretary and treasurer of Mid Mo Printing.
- David Ghena ('88)** is athletic trainer, physical therapist, and research coordinator at Western Wisconsin Sports Medicine. His wife, Becky, is director of human resources at W.A. Roosevelt. They make their home in Onalaska, Wis.
- Frank L. Jurotich ('88)** is a programmer and analyst for Texas Instruments. He holds residence in Dallas.
- Kathleen Kimminau ('88)** is a certified veterinary technician and is employed at Cherokee Animal Clinic. She lives in Lincoln, Neb.
- Gary Lahti ('88)** resides in Westland, Mich. and is a senior year medical student.
- Robert E. Lee ('88)** makes his home in Maple Shade, N.J. He is a computer engineer with GE Aerospace. Robert received his master's in computer science in 1990 from the University of Missouri at Rolla.
- Melanie Blagg Maxwell ('88)** and her husband, Roy, live in St. Joseph, Mo. She is a band director at West Platte R-II School District. He is a band director at St. Joseph School District.
- Tina Ortbal ('88)** is a customer relations project coordinator for CyberTel Cellular. She lives in Ballwin, Mo.
- Lesla Robinson Schlueter ('88)** makes her home in St. Louis with her husband, Steve. She is an inventory control analyst for the Dial Corp. and he is a corporate account executive for Egghead Software.
- Barb Venvertloh Speckhart ('88)** lives with her husband, Brent, in Payson, Ill. She is a computer teacher at Quincy High School and he is a farmer for Speckhart Farms.

**Caroyn Tuttle ('88)** resides in Denver. She is director of junior high ministries at St. John's Cathedral.

**Jeffrey L. Winkler ('88)** lives in Fairfax, Va. with his wife, **Joanna Ewing Winkler ('89)**. He is a sales representative for Paychex and she is a tax consultant with Deloitte and Touche.

**Trish Woodhouse ('88)** is a student loan claims representative with Hemar Service Corp. She lives in St. Paul, Minn.

**Dana Rogers Wootten ('88)** and her husband, Paul, hold residence in Owensville, Mo. Dana is a fourth-grade teacher with Gasconade R-II Schools and Paul is employed in marketing for Gasconade R-II Schools.

**Bryan D. Adcock ('89)** is an activities therapist at Charter Hospital. His wife, **Christine Wilber Adcock ('90)** is an R.N. at UMC Hospital. They reside in Columbia, Mo.

**William A. Bergfield ('89)** and his wife, **Rebecca Brewer Bergfield ('91)**, live in Columbia, Mo. He is a graduate student at the University of Missouri and she is a chemist with Engineering Surveys and Services.

**Liz Brown ('89)** holds residence in Linn Creek, Mo. and is an advertising representative for Knopf Publishing.

**Joseph M. Bullock ('89)** is a sales representative with FMC Corporation. He lives in St. Charles, Mo.

**Jim Campbell ('89)** and his wife, **Linda Scheffer Campbell ('91)**, make their home in St. Louis. He is an account representative with GC Services and she is a staff accountant with Rubin, Brown, Gornstien and Co.

**Mary Beth Cornett DeCook ('89)** is a homemaker. She lives in Livonia, Mo. with her husband, Bruce, and children: Robin and Daniel. Bruce is a semi driver and logger.

**John DeMoulin ('89)** resides in Denver. He is a regional sales manager with Porta-King Building Systems.

**Debra Reinert England ('89)** lives in Hubbard, Iowa with her husband, Keith. She is a pension plan administrator with The Principal Financial Group and he is self-employed. Debra is currently working on her master's at Drake University.

**Kevin S. Fitzpatrick ('89)** is a news editor for Gannett Suburban Newspapers in New York City. He resides in White Plains, N.Y.

**Todd Hart ('89)** and his wife, **Julia Abel Hart ('89)**, live in Davenport, Iowa. He is a controller with Royal Machine and Foundries and she is director of sales and marketing at Daisy Inc.

**Sharon Langhorst ('89)** makes her home in St. Louis. She is a social service worker for the Division of Family Services.

**John J. Laurent ('89)** is a staff consultant with Andersen Consulting and resides in O'Fallon, Mo. He received his postgraduate diploma in management from the University of Melbourne in Australia in 1990.

**Laura L. Meeker ('89)** holds residence in Des Moines, Iowa. She works for Norwest Bank in garnishments and tax levies.

**Sarah Berryman Miller ('89)** lives in Camp Point, Ill. with her husband, Rusty, and their

daughter, Whitney. Sarah is an elementary school teacher with Quincy Public Schools and Rusty is a custom applicator with Lee Fertilizer.

**Joseph A. Mundle ('89)** is a trooper with the Missouri State Highway Patrol. His wife,

**Robin Hahs Mundle ('90)**, is a graduate student at Southern Illinois University at Edwardsville. They make their home in Warrenton, Mo.

**Peggy Broughton Osborn ('89)** lives with her husband, **Brian Osborn ('89)**, in Jefferson City, Mo. She is a claims processor with Missouri State Medical Care Plan and he is a child support enforcement technician for the Division of Social Services.

**Marq C. Rice ('89)** and his wife, **Jeannie Teel Rice ('90)**, live in Ames, Iowa. He is a resident substitute for Youth and Shelter Services and she is a resident counselor with Youth and Shelter Services.

**Ladonna Miller Seegmiller ('89)** is a social worker with Missouri Division of Family Services in Franklin County. **Steve G. Seegmiller ('89)**, her husband, is area manager for Barefoot Grass Lawn Service. They make their home in Washington, Mo.

**Karen Hunniss Smith ('89)** lives with her husband, Dennis, and daughter, Alyssa, in St. Louis. Karen is a medical technologist for the blood bank at St. John's Mercy Medical Center. Dennis is in management for Boatmen's Bank.

**Kimberly Freeman Streeter ('89)** makes her home in Wichita, Kan., with her husband, Jerry. She is an R.N. at St. Joseph in emergency and he is a communication technician with Southwestern Bell Telephone.

**Lori Terzopoulos-Parsons ('89)** holds residence in Kansas City, Mo. and is a research analyst for Valentine-Radford Advertising.

**Julie M. Walbridge ('89)** is an adjunct instructor at Maryville University and a substitute teacher at Hazelwood School District. She lives in Bridgeton, Mo. Julie received her master's in English from Iowa State University in 1991.

**Juli Mylenbusch Wilson ('89)** and her husband, **Scott Wilson ('90)**, live in Spickard, Mo. She is an early childhood special education teacher and he is the shipping department manager with Fuller Marketing.

## 1990s

**Michelle Blotevogel ('90)** is a staff assistant to Jim Talent, the Minority Floor Leader in the Missouri House of Representatives. She makes her home in Jefferson City, Mo.

**Susan Hasselbring Bond ('90)** is a special education/learning disabilities teacher at Walt Disney Elementary for Marceline R-V Schools. Her husband, Daniel, is a press operator for A.P. Green. She has a step-son, Daniel, and they live in Clifton Hill, Mo.

**Irene Unger Bostrom ('90)** and her husband, **J. Brian Bostrom ('90)**, reside in St. Louis. She is a graduate student at St. Louis University and he is a programmer analyst with Blue Cross Blue Shield.

**Elizabeth Jennings Boxley ('90)** is an eighth- and ninth-grade teacher, composition teacher, and yearbook advisor for Princeton R-5 Schools. Her husband, Tod, is a technician for Mercer County Soil Conservation Service. They make their home in Princeton, Mo.

**Robert Campbell ('90)** and his wife, **Chris Gerschevske Campbell, ('90)** hold residence in St. Louis. He is a drafter/designer with R. Rowslein and Assoc. and she is a drafter with Cupples Products.

**John H. DeKeersgieter ('90)** is a computer programmer for State Farm. His wife, **Susan Gadell Dekeersgieter ('91)**, is a sales associate for Von Maur. They live in Normal, Ill.

**Lori Payne Falcone ('90)** married Anthony Falcone in August of 1991. She is a music director for Page County Public Schools and he is a percussion instructor for James Madison University. They reside in Harrisonburg, Va.

**Stephen E. Fisher ('90)** and his wife, Lori, make their home in Kirksville. He is production manager for the Kirksville *Crier* and she is a student at NMSU.

**Annette A. Graeler ('90)** is in customer service and inside sales with PoolQuip McNeme. She lives in St. Ann, Mo.

**James E. Hall ('90)** and his wife, **Elizabeth Steinbruegge Hall ('90)**, make their home in Manhattan, Kan. He is a fire support officer with the US Army and she is a homemaker.

**Michael H. Heeter ('90)** recently joined G.F. Sanders Advertising and Public Relations as an account executive. He holds residence in Manchester, Mo.

**Jennifer M. Imparl ('90)** is a graduate research assistant at Iowa State University and lives in Ames, Iowa.

**Kristen L. Kantner ('90)** resides in Columbia, Mo. and is manager of Camelot Music. She is engaged to Thomas S. Salzer. Kristen has a daughter, Amanda.

**J. Michael Klotzbach ('90)** and his wife, **Michelle Schrader Klotzbach ('91)**, live in Hazelwood, Mo. He is a CAD manager for Crane Design Group and she is a staff auditor with Ernst and Young.

**Geri Mayfield Larson ('90)** and her husband, Kent, make their home in Sherman, Texas. She is a registered nurse at Texoma Medical Center and he is manager at Metro Fence. They have one child, Cory.

**Donald Lewis, Jr. ('90)** is an instructor and trainer at World Gym in St. Louis. He lives in St. Louis.

**Melody Marcantonio ('90)** is a journalism teacher for the city of Ladue School District and is currently working on her doctorate at University of Missouri at Columbia. She holds residence in St. Louis.

**Steven M. Millett ('90)** and his wife, **Deborah Ruttendjie Millett ('90)**, reside in Easley, S.C. He is a graduate student at Clemson University and she is a mid-day personality on WWMM-Magic 107.3 Radio.

**Jennifer Moire ('90)** is an account manager at Versyss Inc. She makes her home in Houston.

**Virginia Rogers Murphy ('90)** is a staff nurse at University Hospital and Clinics. She lives in Columbia, Mo.

**Sharina Steinhart Nolin ('90)** resides in Murfreesboro, Tenn. Her husband, Shon, is a medical student at KCOM. They have a daughter, Lauren.

**Brian Opper ('90)** is a graphic designer with Environmental Science and Engineering, Inc. **Anthony R. Piltz ('90)** is assistant professor of business and economics at Rocky Mountain College. **Kimberly Lundvall Piltz ('90)**, his wife, is a buyer's assistant at Hennessy's Department Store. They make their home in Billings, Mont.

**Richard C. Roberts ('90)** and his wife, Kathyln, hold residence in Kirksville. He is an artist.

**Eva Kaminsky Shuch ('90)** is a counselor with Jewish Family and Children Services. She and her husband, Robert, live in Tempe, Ariz. He is a medical student.

**Greg J. Siering ('90)** makes his home in Kirksville and is an English graduate student at NMSU.

**Joseph J. Stockmann ('90)** is a programmer and analyst with the City of Overland Park, Kan. He holds residence in Liberty, Mo.

**Kimberly Floyd Sylvia ('90)** and her husband, Gabriel, reside in Columbus, Ga. Gabriel is a second lieutenant in the US Army.

**Deborah L. Thomas ('90)** is an agent with Country Companies Insurance from Florissant, Mo.

**Mary Vitale Veselic ('90)** married **Branko Veselic ('90)** in August of 1991. She is a speech pathologist at Missouri State School for Severely Handicapped and he is a computer programmer for Hallmark, Inc. Mary recently received her master's degree in speech pathology from Southern Illinois University at Edwardsville.

**Ellen Benedix ('91)** resides in Kansas City, Mo. and is currently looking for employment in library work.

**William L. Dechent ('91)** is a graduate research assistant and lives in Rolla, Mo.

**Deborah E. Doering ('91)** is a student in the MAE program at NMSU and makes her home in Florissant, Mo.

**Gail Duenckel ('91)** is a pediatric nurse at Hannibal Regional Hospital. She holds residence in Hannibal, Mo.

**Edward A. Job ('91)** is a loan specialist at Citicorp Mortgage from Chesterfield, Mo.

**Cheryl A. Laaker ('91)** resides in Quincy, Ill. She is producer and feature reporter for Good Morning Tri States, on KHQA-TV Channel Seven.

**Bradley G. Mehrtens ('91)** is a graduate student at University of Illinois at Urbana-Champaign. He lives in Champaign, Ill.

**Maureen Mack Mueller ('91)** and her husband, William, reside in Newberlin, Ill. She is a membership secretary with Illinois Trial Lawyers Assoc. and he is a contractor.

**Angela M. Phillips ('91)** is a customer service consultant for Customer Development Corporation. She holds residence in Peoria, Ill.

**Robbi D. Shedron ('91)** resides in Kirksville and is a nanny.

**Melissa Skeels ('91)** is an assistant manager at McDonald's. She is engaged to Gary Pearson. He is a line steewart for Maytag. Melissa lives in Newton, Iowa.

**Amy Turner Vo ('91)** is a secretary in the Business Office at NMSU. Her husband, Canh, is a medical student in the US Army. They make their home in Kirksville.

**Brian D. Wade ('91)** is a graduate student and teaching assistant at Northern Arizona University. He makes his home in Manchester, Mo.

**Steven J. Willott ('91)** lives in St. Peters, Mo. and is a graduate student at NMSU.

**Carol Ann Zieger ('91)** is a bankruptcy specialist with Gershman Investment Corp. She resides in Florissant, Mo.

## Obituaries

### The '20s

**Hazel Call Page ('22)**, 94, of Visalia, Calif., died November 1, 1991 in a nursing home in Tulare, Calif. Mrs. Page was a librarian for Peculiar High School in Cass County for five years before she retired in 1968. She was a tutor and substitute teacher after she retired. She formerly taught in rural schools in Missouri, Illinois, and Nevada. She helped establish libraries in rural counties in Missouri with the WPA in the 1930s and 1940s. She was a disaster-relief worker for the American Red Cross for 20 years until 1963.

### The '30s

**Helen Barbara Brokesh ('31)**, 83, died August 15, 1991 in Grim-Smith Hospital in Kirksville. Following her graduation, she taught music in Missouri, Iowa, Kansas, Texas, and California where she retired from teaching in 1973.

**Shirley Jeanette Cauby Simler ('33)**, 79, died on October 9, 1991 at the Villa Teresa Nursing Home in Harrisburg, Pennsylvania. She spent most of her school terms from 1933-1975 teaching in rural grades of high schools throughout northern Missouri. She was a past member of the Missouri Athletic M Club, the Business and Professional Women's Club, Missouri State Teachers Association, and 4-H Club.

**Anna Moore Casey ('34)**, 86, died on November 5, 1991. Anna was an officer in the auxiliaries of the Southern Tier Osteopathic Society and the New York State Osteopathic Society for years. She was active in the Auxiliary to the American Osteopathic Association, Rotary Anns and the Catholic Daughters of America.

**Julia M. Gordon ('34)**, 81, died August 24, 1991 at Spelman/St. Luke Hospital in Dearborn, Mo. Mrs. Gordon taught English and dramatics at North Platte High School in Dearborn before she retired. She was a member of the Daughters of the American Revolution.

**Lena Mills ('38)**, 79, died June 8, 1991 at Kirksville Manor Care Center. Ms. Mills spent 5 years with the American Red Cross Military Welfare Service working with army psychiatrists and continued work in mental health until she retired in 1973.

**Goldie T. Yowell ('38)** of Memphis, Tenn. died of cancer at her home on April 24, 1991.

**Richard Alva Erwin ('39)**, 71, died July 25, 1991 at his home in Greentop, Mo.

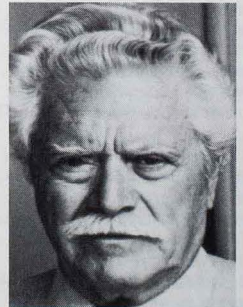
### The '40s

**Robert L. Mills ('42)**, 70, of Clearwater, Fla., died May 26, 1991 at his home. He lived in Palmyra, Mo. where he taught American history and political science and coached football in the high school before going into the US Army where he served three years. Mills was a corrective therapist in the Veterans Ad-

ministration Hospital in Clinton, Iowa, and Memphis, Tenn., before retiring to Clearwater, Fla. in 1976.

**Bonnie Ransdell Patten ('43)**, 71, died April 18, 1991 at Central Florida Regional Hospital in Sanford, Fla. After training for air traffic control in Kansas City, Mo. she worked at the Des Moines, Iowa airport as one of the first women in that field.

**Celia Leora Dabney ('46)**, 78, died June 15, 1991 at the Kirksville Osteopathic Medical Center. In her forty-five years of teaching in Missouri, she taught at Williams country school, Salisberry and Millard country school before teaching in and retiring from the Kirksville school system.



**Wilbur Stanley Shepperson ('41)**

Well-known Nevada author and University of Nevada professor Wilbur Stanley Shepperson died in September, 1991, at the age of 72, in his home. He received a bachelor's degree from Northeast Missouri State University and did graduate work at Johns Hopkins

University before World War II. After serving in the Army Air Corps as a personnel officer, he continued graduate work at the University of Denver, University College, London, and the London School of Economics. He received a doctorate in history from Western Reserve University in 1951 and moved to Reno to begin teaching at the University of Nevada. Shepperson taught at the University of Nevada for 40 years, where he served as the chairman of the History Department for 20 years. He held the Grace A. Griffen Chair in History since 1987 and was the recipient of the first Distinguished Faculty Award given by the University of Nevada, Reno this year. Shepperson was known as a distinguished historian and author, gaining an international reputation as an expert on British immigration to the United States. He received a Carnegie Corporation grant and a temporary appointment with the Department of State in 1952, was a visiting lecturer at the University of Wales, Aberystwyth, and was a consultant to the Department of the Interior for the Statue of Liberty Immigration Museum from 1958 to 1963. He was also a Fulbright Scholar at the University of Liverpool in 1967-68 and elected a fellow to the Honorable Society of Cymmrodorion, the Welsh Culture Society, in 1962. He founded and edited the University of Nevada Press Nevada Studies in History and Political Sciences Series from 1960 to 1991. He played an instrumental role in establishing the southern Nevada offices of Historical Society and the Nevada Humanities Committee.

**Kathleen L. Smoot ('48)**, 63, died August 12, 1991 in her home in Bakersfield, Calif. She taught in Marion County R-II schools for 30 years, retiring in 1981. She was also employed by the Bank of America in Lamont, Calif.

## The '50s

**Warren Burton Hamilton II, D.O., ('51)**, 63, died October 4, 1991 at Columbia, Mo. Dr. Hamilton was a Thirty-second Degree Mason, a member of the American Osteopathic Association, the Missouri Osteopathic Association, former Vice-President of the Wentzville School Board, former Chief of Staff at Lincoln County Memorial Hospital, Troy, and at Pulaski County Hospital in Waynesville, Mo.

**Van Ventress Vencill ('51)**, 81, died July 27, 1991 in Columbia, Mo. He served as a sergeant in the Army Corps of Engineers in World War II in Europe and the Philippines and taught industrial arts in St. Louis county schools until he retired in 1974.

**Glen Sayre ('53)**, 78, died May 26, 1991 in Sullivan County Memorial Hospital in Milan, Mo. He taught in the Milan C-2 system for 22 years and was employed by the Linn County R-I system as a teacher and elementary principal for 21 years.

**William Shannon Bowles ('55)**, 58, died in August of 1991 in Spokane, Washington. While living in Missouri, he was a coach and

teacher in Kirksville, St. Charles and Centralia. In 1964, he was hired as a teacher and head football coach at University High School in Spokane, Wash. He was also an administrator at Medical Lake High School, West Valley High School and Continuation High School before his retirement in 1988.

**Mary Jean Nettle ('55)** died in her home September 28, 1991, at the age of 59, after a lengthy illness. She taught in Vandalia, Mo., Cedar Rapids, Iowa, and for the last 25 years in Webster Groves, Mo. She was a member of Kappa Kappa Iota and Alpha Delta Kappa educational sororities and Alpha Sigma Alpha social sorority.

**Harry Eugene Choulett ('56)**, 62, died July 17, 1991 at a Berkeley, California hospital. In 1960, he moved to Berkeley, where he taught Chemistry in the Science Department of the Berkeley High School for the past 31 years. Gene served in the armed forces in Germany, during the Korean Conflict.

**Robert P. Gardner, Jr., ('59)**, 53, died October 20, 1991 in Santa Cruz, California after a battle with cancer. He worked nearly 15 years with Western Publishing Company. He also worked for WHAM-O Manufacturing, where he was instrumental in establishing the World Frisbee Championships as vice-president of sales and marketing.

## The '60s

**Jerry Jones ('60)**, 57, of Overland Park, Kan. died August 17, 1991 in the Veterans Hospital, Kansas City. Mr. Jones was a construction worker. He was the founder and president of the Kansas Political League community service group. He was an Army veteran.

**Rebecca Sue Macumber ('61)**, 52, of Clifton Park, N.Y., died August 25, 1991 at her home. Becky was a marketing assistant for the Canadian-Pacific Railroad in Clifton Park, N.Y. She had worked for the railroad for over 30 years.

**Leslie Eugene Wellborn ('61)**, 59, of Macon, died November 7, 1991 at the Boone Hospital Center in Columbia, Mo. Les taught art in the elementary school at Macon from 1961-1966. He was an agent for Farmer's Insurance Group, and in 1968 he started working for the Division of Family Services in Macon as a caseworker. He progressed from caseworker to supervisor, eventually becoming Macon County director. He transferred from county director to the legal section of the Department of Social Services in 1979, as a hearing officer, which was the position he held at the time of his death.

## The '80s

**William Randall Besgrave ('82)**, 33, died October 9, 1991 as a result of an automobile accident in St. Louis. He was employed by McDonald's Restaurants for nine years, most recently as Operations Supervisor of Macon and Kirksville. He was a Member of Phi Kappa

Theta fraternity, past Director of the Macon Chamber of Commerce, and past member of the Kirksville Jaycees.



Former vice-president of the Northeast Board of Governors, **Inks Franklin, Ed.D.** died October 25, 1991 at a hospital in Columbia, Mo. Franklin began his professional career at the age of 16 and taught for 11 years in rural Missouri

high schools. As a staff member with the Missouri State Teachers Association, and editor for 37 years for *School and Community* newsletter, Franklin was widely known throughout the state. After his retirement, Franklin was president of the Columbia Chapter for the American Association of Retired Persons from 1979 to 1981. Franklin was 81 at the time of his death.

## In Memory...

	Date of death
Lundy Allen ('42)	6-91
Neva (Harpham) Brown ('82)	
Michael Cochran ('69)	11-11-91
Ferdinand Del Pizzo ('34)	
Wilda (Lauer) Dunn ('43)	8-20-91
Cheri (Parsons) Fillman ('79)	8-09-91
Richard Mahon ('62)	8-07-91
Lewis Ogle ('54)	
Ardis (Meilicke) Turner ('73)	9-23-91
Janis (Dail) Gunnell ('62)	5-21-91
Carson W. Schmidt ('65)	2-15-91

## Looking for Generations

As part of our 125th celebration, we are looking for those families who have had three or more generations, especially if they were successive, who have attended NMSU. Please help us by sending complete information on generations who have attended NMSU.

Send information to:

NMSU Generations  
Alumni Office  
McClain Hall 106, NMSU  
Kirksville, Mo. 63501

# Letters

## Alumni Chapters

I have reviewed the list of Seattle graduates in the college directory and have compared them with addresses. I think there are twenty-four names, and it seemed that all of the addresses were accessible to a downtown central location. We should be able to get together for an initial meeting to discuss forming a chapter.

Thank you, Jane!  
Helen (Thompson) Miller  
(48)  
Seattle, Wash.

[I] enjoy (very much) the alumni news and what's going on at NMSU. I have many friends from my days attending NMSU—I often hear about [them] from reading the Alumni Assoc. News.

Fred A. Forquer ('58)  
West Dundee, Ill.

As Dean of Students I have had several of Duchesne's seniors choose NMSU. I wish you well.

Terry W. Gravemann ('72)  
St. Charles, MO

As a graduate and former faculty member I am always interested in growth and activities of the University. However, due to age limitations I hesitate to volunteer or assume active participation.

Frances Fuller Spanier  
(29)  
Hutchenson, Kan.

I have been in Arkansas less than two months and I have already met 2 recent Northeast graduates. I think we would all be inter-

ested in developing an alumni chapter in this area.

Donna M. Bell ('88)  
Fayetteville, Ark.

Bill and I are very happy to see NMSU showing interest in the northern NJ area. We have 2 children soon to be looking at colleges, NMSU will be one of them. Thanks for getting in touch with us.

Karen Nicodemus ('69)  
Bergenfield, N.J.

[I] am interested in opportunities to meet other grads, more for social purposes. It might be a good idea to form a greater NYC-NJ chapter depending on where greater number of people live via a NJ or NY chapter. Any alumni auto window decals available?

Nick Romanetz ('65)  
Annandale, N.J.

## Kansas City Alumni Chapter Reception

I enjoyed meeting you and talking about NMSU/Kirksville . . . I'm looking forward to the alumni activities.

Have fun and stay warm this winter.

Mark Bullock ('83)  
Kansas City, Mo.

## Homecoming

I have just returned to Pennsylvania from a great homecoming at NMSU with my 3 children, ages 9, 7, and 5. We were vastly impressed with the fine activities. The Bulldog pride was evident everywhere on campus and in town with the students and buildings. Is there a "Northeast" connection for those of us living in this part of the country? If so, connect me soon. I have already made reservations at a Kirksville motel to attend homecoming 1992. I am proud to be a 1975 graduate of NMSU.

Sincerely,  
Joe Latosek ('75)  
Kingston, Penn.

We enjoy coming back to Homecoming each fall and seeing the structural changes that have been made.

Keep up the good work!  
James Leroy Simpson ('73)  
Camp Point, Ill.

[I] had hoped to make Homecoming this weekend—but your weather precluded me flying an FA-18 "Hornet" into Kirksville.

Maybe I can make my 20th next year.

Best of All in '92.  
Comm. Craig Weideman  
(72)  
Newport, R.I.

Thanks to you and the entire Alumni staff for a most pleasant day last Saturday. You couldn't have made us feel more welcome.

The day ran so smoothly—from the parade to the luncheon, game, reception

and the Rita Rudner show—all reflecting the detail and work by your staff. We thought Rita Rudner was very good—certainly deserving of her awards. The Unique Ensemble was a very talented group and good entertainment.

We have attended many Homecomings at NMSU and none were better than this one.

Sincerely,  
Victor ('41) and Betty  
(Stutler) ('43) Cochran  
Milan, Mo.

## Congratulations

Dear Dr. Towne,  
Congratulations for winning the "Best Missouri Historical Review Article" award.

Seeing your picture in the latest issue of the Northeast Review, prompted me to write this letter....

My success as a teacher was the result of [the] quality education I received at Northeast. You, Dr. Towne, along with Dr. Kohlenberg and Dr. Hood, were the most influential people in my educational life. I not only learned from you history, but I also learned how to teach well....

Dr. Towne, ... I was glad to find out that you are still writing and winning awards ... Thanks again and very best wishes.

Engin M. Uralman ('58)  
Redondo Beach, Calif.

## Reunion

Thank you, thank you, thank you. The 1990 Alumni Directory arrived today and I am so pleased with it ... Whoever did the compilation did a great job...

Thanks to you and the Directory, I am sure it will be fun to meet others and reminisce about our adventures in K-ville.

Wish I could have come back for the reunion of the Class of '51 .... Looking forward to the 50th.....

... thanks again for sending the Directory. It made my day.

Cheers,  
Flip Johnson ('51)  
Sarasota, Fla.

## 'Notes

I enjoy receiving the paper from NMSU. I'll always remember all the good students there. Good luck in '92.

Mr. Terry Lee Aikin ('68)  
Des Moines, Iowa

We thoroughly enjoyed our NEMOSCOPE NOTES and regret we will be unable to attend Homecoming this year. I'm sure it will be a huge success....

Also, to update our information sheet, we are expecting our first child, due in May 1992. Thank you for making this change for us.

Sincerely,  
Barbara (Wolf) Masters ('84)  
Lawrenceville, Ga.

## Update

... I have written a stage drama on Walt Whitman which was premiered in Lublin, Poland, last December, and may well get a staging in Bratislava, Czechoslovakia in the next few months. The piece has been translated into Spanish, French, Swedish, and Japanese in readiness for 1992, the 100th anniversary of Whitman's death....

And I keep blowing my tuba in the Shizuoka Philharmonic; (I came to KSTC as a music student in 1931 from Waukegan, Illinois). Our orchestra is making a concert tour next summer to France and Switzerland

and, if at 79 I can still tote the 14 kilo instrument, I will be there.

Thanks for the booklets on the new President and the good news of your great new school. I doubt that I would be able to find my way around. In my years, we had 500 students who traveled between Kirk and the Library.

All the best to everyone  
William Luther Moore ('34)

Professor Emeritus of  
English  
Toho Gakuen University  
of Music  
Tokyo

Would you please give me the address of Sam Katz, class of '34?

Please update my NMSU Alumni record as follows:

Check if new address

Name \_\_\_\_\_ Maiden Name \_\_\_\_\_

Soc. Sec. # \_\_\_\_\_ Year Graduated \_\_\_\_\_

Street \_\_\_\_\_

City \_\_\_\_\_

State \_\_\_\_\_ ZIP \_\_\_\_\_ Telephone No. ( ) \_\_\_\_\_

Employment \_\_\_\_\_

Position \_\_\_\_\_

Name of Spouse \_\_\_\_\_ Maiden Name \_\_\_\_\_

Employer of Spouse \_\_\_\_\_

Position \_\_\_\_\_

Spouse an NMSU graduate?  Yes Year \_\_\_\_\_  No Soc. Sec. # \_\_\_\_\_

Children (Names and Years of Birth) \_\_\_\_\_

Deaths in Family \_\_\_\_\_

Other Degrees (University and Year Received) \_\_\_\_\_

May information be used in the Northeast Review?  Yes  No

Person returning card \_\_\_\_\_ Date \_\_\_\_\_



If you have:

moved,

married,

had a baby,

changed jobs,

or whatever,

we want to know!

# Friends of Northeast

**T**he NMSU Development Fund was established in 1980 to encourage private financial support for Northeast Missouri State University. Gifts received are used to enhance the quality of education and to promote the welfare of the University.

Each year, the importance of private support is magnified as the cost of education increases. Assistance from the state of Missouri has not kept pace with University needs. Although educational costs continue to rise, Northeast Missouri State University takes pride in being able to provide one of the finest liberal arts and sciences educations, at one of the least expensive costs, in the country.

Generally speaking, money given to the Development Fund forms an endowment. This endowment is invested and the interest earned is allocated to various projects which allows your gifts to work today while remaining available for tomorrow. A small percentage of current gifts is used to offset operational expenses and to fund short-term projects.

Specifically, gifts to the Development Fund provide for the following:

- Scholarships
- Student Loan Programs
- Instructional Materials & Equipment
- Faculty Awards/Development
- Cultural Events

Following are the names of alumni and friends of the University who contributed significantly to the Development Fund between July 1, 1990, and June 30, 1991.

## \$100-299

Janine Michele Allison ('75)  
John R. & Helen B. (Rieger) ('50)  
Anderson  
Jeanie (Coy) Auseon ('68)  
Martha (Cokerham) Bagley ('61)  
C. Michael ('77) & Rhonda Marie  
(Walsh) ('78) Bailey  
Ed ('49) & Helen (Turner) Bailey  
Robert J. ('51) & L. Harlene  
(Wellman) ('50) Bailey  
James Kenneth ('73) & Karen  
Kay (Poertner) ('74) Baker  
Lee Edward ('38) & Maggie Lou  
(Smith) Baker  
Jay Davison Ballanger ('86) &  
Susan Mary Shoaff-Ballanger  
Tom Ballew ('75)  
Joe Banez  
Steven James Barnett ('72)  
Andrew R. ('74) & Barbara  
(Kahn) ('78) Barnosky  
W. Gene Bartlett ('30)  
B. Gene Bartow ('52)  
Russell G. & Deborah Kim (Dye)  
( '79) Baughman  
Marion Ruth Beal ('66)  
Donna Marie Bell ('88)  
Joe M. ('62) & M. Eileen (Logan)  
( '59) Bennett  
Marvin Jay Berman ('68)  
G. Mark ('82) & Laura (Rzepka)  
Bersted  
Frances Elaine Bierwas ('84)  
Jackie F. & Josephine (Zeigler)  
( '68) Billington  
Charles W. Blackwell ('52)  
Neil Blackwell ('78)  
Beverly Blodgett  
Clifford R. Bohmbach ('42)  
Norton Bohon  
Claire Bolton  
Connie I. Bower-Tilleros ('68)  
R. Deane ('40) & Geraldine I.  
(Gehrke) ('42) Branstetter  
J. Calvin Brantley ('42)  
Willis J. Bray Jr. ('33)  
Phillip Kerr ('78) & Marla Ann  
(Blake) ('77) Brenner  
Barbara Jean (Milton) Bresnahan  
( '86)  
Melanie Kay (McClain) Brown ('7  
Rexford William ('71) & Sidna  
(Richardson) ('67) Brown  
Harlan Keith Bryan ('76)  
Bernie A. ('62) & Janet Kay  
(Clark) Buckman

- Gail D. ('60) & Barbara Jean (Cupp) ('69) Burchett  
 Howard William Burkemper ('78)  
 Jeffrey Alan ('78) & Deanna S. (Apperson) ('78) Burns  
 Guy N. Burton ('53)  
 Larry Ralph ('70) & Pamela Kay (Isely) ('70) Buschling  
 Leonard Allen Butler ('67)  
 Betty J. (Couch) Butterfield ('55)  
 James D. Byland ('72)  
 Alfred J. Caporizzo Jr. ('74)  
 Edwin C. & Nettie E. (Brown) ('76) Carpenter  
 Kenneth N. Carter Jr.  
 Bruce Edward Castle ('80) & Frances Dare  
 Chao-Lung Chen ('87)  
 Allen Richard Church ('62)  
 H. Norman Clarkson ('65)  
 Dennis Clawson  
 Carroll C. ('36) & Christine (Garrett) ('33) Cochran  
 Louis J. ('67) & Deborah L. (Duncan) ('72) Coco  
 Mary E. (Parrett) Collopy ('68)  
 Hubert A. Conner ('29)  
 Royce E. ('62) & Virginia (Link) ('61) Cook  
 Pamela Sue (Hawkins) Cottingham ('73)  
 John E. & Marcia (Sidwell) ('43) Cousins  
 James Clair & June Western ('41) Cowan  
 Robert Cowan  
 John V. Cox ('52)  
 John Nelson Cragg ('69)  
 Dennis Michael ('69) & Barbara M. (James) ('72) Creegan  
 Paulette H. (Kautz) Cummings ('71)  
 James G. ('49) & G. Pauline Curry  
 C. Sue Davis ('66)  
 Jeffrey B. De Regnier ('79)  
 Brydon M. De Witt  
 Gary Allen Derby ('70)  
 William A. ('48) & Ruth (Milhoan) ('49) Deskin  
 G. Earl Dodd ('49)  
 John William ('71) & Vicki Dodge  
 Gary Gene ('74) & Marian (Lechman) Doss  
 Marie (Wheatcraft) Dougherty ('33)  
 Thomas L. Drennan  
 Margaret Easley  
 James Emmert ('58) & Patricia (Smith) ('58) Edwards  
 Howard R. Eiffert ('59)  
 Pat & Eleanor Ellebracht  
 Sandra Sue (Brady) Elliott ('74)  
 Terry L. Elliott ('65)  
 Geoffrey Michael Engen ('74)  
 Bruce Potter Erdel ('82)  
 John V. Erhart  
 Donald Ray Erikstrup ('70)  
 Richard G. ('49) & Edith R. (Ford) ('49) Erzen  
 Gary Kim ('76) & Julie Ann (Volkmer) ('76) Evans  
 Robert P. Ewing ('48)  
 James Timothy ('69) & Sandra Kay (Bartlett) ('69) Farrell  
 Danny ('82) & Barbara Fennewald  
 Darrel Fenton  
 Jimmy Keith Fillman  
 Philip Walter First ('74)  
 L. Samuel Fleak ('64)  
 Peggy Ann (Cypert) Folta ('81)  
 Joseph Fondacaro  
 Jean (Overton) Foster ('52)  
 Scott Randall Fouch ('82)  
 Charles M. Foudree ('66)  
 Arthur Glenn Freeland ('78)  
 Mary Grow Funk ('35)  
 Ronald Robert ('82) & Elsie Jean (Kins) ('87) Gaber  
 Paul Dean ('73) & Alicia Kay (Troutman) ('74) Garnett  
 Ronald T. & Kandace K. (Thompson) ('71) Gasperini  
 Hazel Gehrke ('25)  
 James Paul Gephardt ('72)  
 Marshall James Gerrie Jr. ('68)  
 Mary Giovannini  
 Thomas E. Glascock  
 Peter C. Goldman  
 Randall Scott Gordon ('83)  
 Alfred P. Gosney ('63)  
 Darrel W. ('50) & Margaret (Whittom) ('48) Gourley  
 Gregory Don Graber ('82)  
 Robert A. Graham Jr. ('83)  
 Joseph Edward Gray ('38)  
 Emil W. Green ('39)  
 Margaret (O'Briant) Greenberg ('35)  
 Irene (Waddill) Greiner ('56)  
 Nancy E. (Smith) Groom ('64)  
 Ray Haas  
 Donald Gene Hackmann ('76)  
 William F. Hall  
 Pyung Eui Han  
 Bernard Ray ('71) & Dolores Kay (Overstreet) ('68) Hannam  
 Stephen Lloyd ('71) & De Raye F. (Sukut) ('72) Hansen  
 Wayne R. Hansen  
 Keith Harrison  
 Joe K. Hasenstab ('60)  
 Carmen E. ('60) & Mary G. Hayden  
 Harold E. Haynes  
 Barbara K. Heard  
 J. Joyce Hearn  
 Joan Davis Heimendinger ('62)  
 Kurt E. ('81) & Courtney Ann (Wetzel) ('80) Henke  
 Samuel Lee Hensen ('71)  
 Patricia Joan (Haile) Heritage ('78)  
 N. Jeffrey Herndon ('80)  
 Larry G. ('60) & Janet Herron  
 Robert J. Hodges ('55)  
 Theresa Day Hollingsworth ('30)  
 John D. Holm  
 Ken Holmes & Karen Rae Smith ('80)  
 William G. Holper  
 Michael Lowell ('69) & Jacquelyn L. (Jones) ('69) Hopkins  
 Ruth Isabell Howell ('59)  
 Dale A. Hudson  
 R. Michael ('67) & D. Suann (Giltner) ('73) Hughes  
 Ray Nichols Hughes ('82)  
 Doyle Edwin ('57) & Camilla (Oestreich) Hull  
 Wallace J. ('62) & Jeanne (Onoye) ('61) Inouye
- 
- George W. Jacobs  
 Margaret (Richardson) Johnson ('44)  
 Richard L. Johnson  
 James Robert Johnston  
 Clarence M. Jones Jr. ('51)  
 Gale O. Jones ('53)  
 Lee A. Jones ('66)  
 Nicholas R. Jordan & Annette Jacob  
 Judith G. (Sloggett) Kaser ('75)  
 John William Kauzlarich ('69)  
 Victor Harry Kaylarian ('68)  
 James R. Kendrick ('61)  
 Raymond E. Kerr  
 Arthur F. ('55) & Doris J. (Hughes) ('56) Kimberly  
 Frederick Dennis Kingsolver ('69)  
 Scott Charles Kirkland ('75)  
 Yolanda B. Kish  
 Douglas Howard ('84) & Jo Ellen K. Kitts  
 Karen Elizabeth Klingemann ('89)  
 Anthony Lynn ('84) & Sandra Lou (Pfadenhauer) ('87) Klote  
 Paul J. Klote ('67)  
 Mark Alan Koerner ('75)  
 Lester M. Kraft ('49)  
 Steven Donald Kretz ('89)  
 Kenneth R. ('46) & Mildred (Waters) Kurz  
 Leila (Hurliman) Larimore ('31)  
 V. Elizabeth (Peterson) Laughlin ('63)  
 Donald L. Leavengood ('69)  
 John Courtney ('74) & Deborah K. (Ryan) ('73) Lechner  
 John Madison Lee  
 Andrew & Cynthia L. (Smith) ('82) Libera  
 Randy Dean Lierman ('82)  
 Mary Ann (Fowler) Linneman ('40)  
 Steven M. ('71) & Susan Marie (Hicks) ('76) Lowenberg  
 Barbara Jane Lubbert ('82)  
 Tamara Sue Lubbert ('82)  
 Gary Dean Lykins ('84)  
 Delbert E. ('37) & Louise (Surbeck) Maddox  
 Wally ('71) & Kaye (Johnson) Malins  
 Wayne R. Markee  
 Daniel Mallon Martin ('78)  
 Cynthia Natsue Masukawa ('75)  
 R. Perry ('72) & Carole Joyce (Crall) ('71) Mathes  
 Cynthia Ann (Crandall) Mayberry ('85)  
 William D. McClelland  
 Melvin R. McCollum ('66)  
 Gladys R. (Church) McDole ('30)

*"Part of that [funding] formula involves the success of our development efforts . . . We appreciate the ongoing support of our donors, . . . Others may be giving for the first time, and we welcome your involvement in the success of Northeast."*

*Russell G. Warren  
 President*

- Alice Jane McEwen ('70)  
 Kenneth Alan ('79) & Gemma A. (Kalinowski) ('78) McKinney  
 Mark Ray McLeod ('85)  
 Randa Fern Meiser ('85)  
 Frank A. Melvin ('54)  
 Kenneth Mergen  
 Donald B. ('50) & Gene (Bowen) ('50) Merritt  
 Curtis Ray & Robin Carol (Reese) ('77) Miller  
 James Fred ('65) & Barbara Ann (O'Brien) ('66) Miller  
 Linda Marie Miller ('70)  
 John J. ('52) & Margaret Mignon (McCurdy) ('58) Millin  
 Rex Edmond ('68) & Bette Lou (Brown) ('68) Miskimins  
 Robert L. Mitts  
 Duane Alan ('74) & Deborah Ann (Brandt) Monroe  
 Cheryl Ann (Bindseil) Morrow ('74)  
 Robert J. Motley ('53)  
 Kevin Martin Motz ('88)  
 James J. ('41) & Margaret M. (Walker) Mudd  
 H. Payne ('35) & Dubby (Derr) ('35) Muir  
 David L. ('52) & Sue (Farmer) Murphy  
 Paul Deaver Myers ('42)  
 Kevin Michael Neese ('83)  
 Jerry D. ('59) & Carol Ann (Armstrong) Nelson  
 James Edward Nickell ('74)  
 Terry Lee ('67) & Connie (Casady) Nickels  
 Dean Thomas ('70) & Catherine A. (Powell) ('82) Nickens  
 Pete & Margaret (Gray) ('58) Nicoletti  
 James J. Niederkorn ('74)  
 Larry Kenneth ('65) & Mary Lee (Green) ('63) Noel  
 Patrick M. ('70) & Judith Ann (Omer) ('70) O'Rourke  
 Hiroshi Okano ('65)  
 Morris ('49) & Marlene Osburn Tom Oswald  
 Ching-Ying Pan ('84)  
 Donald E. ('57) & Jean W. (Wells) ('67) Parsons  
 Darlene G. (Harrell) Patton ('66)  
 James & Helga E. (Schafer) Paulding ('79)  
 Lawrence Keith Peck ('62)  
 Earl D. Perry ('51)  
 Thomas F. ('67) & Constance Dorothy (Nitz) Peters  
 Ralph J. ('48) & Jolene (Underhill) ('47) Pink  
 Fontaine C. ('70) & Vera Violeta (Gomez) ('69) Piper  
 Susan Anne Plassmeyer ('86)  
 Bruce Allen ('80) & Debra Ann (Brockschmidt) ('81) Poese  
 Jerry Scott Power ('79)  
 Arnold Preussner  
 Dorothy (Williams) Pringle ('38)  
 Richard S. & Linda Pryor  
 Elmer W. Pundmann ('39)  
 J. Leonard Purvis ('64)  
 Carol Race  
 Linnea Ratcliff  
 Kent Otto ('87) & Janet Elaine (Claypoole) ('89) Ravenscraft  
 Richard Eugene Ray ('72)  
 James R. & Shari L. (Powell) ('58) Reinhard  
 Dale L. Reinker ('67)  
 Merle M. Reisner ('64)  
 Denise Diane Rendina ('88)  
 Eleanor Eileen Reynolds ('79)  
 Therese K. (Chun) Rhee ('61)  
 William W. Richerson ('53)  
 Kenneth Rickli ('65)  
 Woodrow T. Rider ('36)  
 Jerry Albert Riepe ('86)  
 Judy Joan (Winn) Riether ('68)  
 Rick Fletcher ('74) & Shirley Jean (Kent) Riley  
 Iva (Shipman) Roach ('29)  
 Robert L. Roark ('40)  
 Kenneth Paul ('70) & Barbara Jean (Rowland) ('83) Roberts  
 Richard F. Roberts  
 Calvin E. Roebuck ('57)  
 Richard H. Roedder ('63)  
 Steven Walter Rose ('69)  
 Bob K. Rothschild ('47)  
 James W. Rozendaal ('61)  
 Thomas Oliver Rusert ('70)  
 James W. Sallade ('55)  
 Michael Roy Sandheinrich ('78)  
 George V. Santoni ('61)  
 Elwood E. Sapp ('54)  
 Nancy Sue Sappington ('78)  
 E. Gene ('63) & Ginny (Colton) Schneider  
 Robert George Schultz ('80)  
 Linda Seidel  
 Ronald David Selkirk ('69)  
 Ning-Sing Shih ('84)  
 William W. ('49) & Jeanne (Jones) ('52) Shinn  
 Seth Darrell Shumaker ('86)  
 Valerie Sue (McHargue) Sieverling ('81)  
 David Lee Siglin ('65)  
 Willard H. ('54) & Nelda Virginia ('69) Sims  
 Laura L. Sinclair ('63)  
 Maurice E. Singley ('56)  
 Kenneth F. ('73) & Vicki Slaughter  
 Stephen Eugene Sloop ('72)  
 Douglas Lynn ('69) & Sharon Kay (Billington) ('69) Smith  
 James D. Smith  
 Stephen Robert ('69) & Susan Lee (Roberts) ('69) Smith  
 Gary Lee Smoot ('69)  
 Paul B. Sneider  
 Cheryl Jo Anne Snell ('77)  
 Lance Eugene Solter ('68)  
 Thomas B. Songster ('63)  
 Windorf M. ('42) & Dorothy Sooter  
 John ('47) & Thelma Spainhower  
 Preston H. Sparks Jr. ('71)  
 Alfred H. ('60) & Elizabeth (Swisher) ('58) Srnka  
 Garnet M. St. Clair  
 Michael P. Starceovich ('66)  
 James W. Steele ('50)  
 Dale Michael Stegeman ('77)  
 Robert E. ('57) & Carol Jean (Jenkins) ('59) Stephens  
 Kenneth & Dorothea Marie (Griffith) ('70) Stilwell  
 M. Catherine (Cox) Stipe ('45)  
 James R. ('50) & Carole Joan (Clermont) ('69) Stookey  
 Frances E. Story ('36)  
 Clark D. ('29) & Nell K. (Coleman) Stutler  
 Paul Sundet  
 Vincent Kin Shing ('71) & Nancy (Wen) Tam  
 M. Ruth Taylor ('52)  
 Michael James Taylor ('85)  
 Claudine (Carter) Terry ('35)  
 James K. ('38) & Wilma (Peebles) Terry  
 Janna Dee (Bounds) Tetzlaff ('77)  
 Roy L. Tewell ('59)  
 Bonita Jean Tompkins ('70)  
 Melva Wolf Trager ('64)  
 Ester Janice Travis ('69)  
 Lui Talusa Tuitele ('70)  
 Vester B. Unsell  
 Sina Vaughn ('12)  
 Madonna Ruth Ventling ('70)  
 Wayne L. Ventling II ('74)  
 Philip R. & Wilma (Opel) ('41) Wade  
 Marian S. Wadsworth  
 Abdul Jaleel Wahab ('73)  
 Thomas ('83) & Kathy Anne ('83) Wang  
 Ross M. & Ruth (McKinney) ('42) Warden  
 M. T. Waters ('47)  
 William J. Weber ('62)  
 Bibet Loree Weber-Burnetta ('61)  
 Richard Kenneth ('73) & Mary Frances (Perry) ('75) Weerts  
 Robert E. & Helen (Haupt) ('50) Weissflug  
 Paul J. Whalen ('48)  
 William B. ('59) & Myra K. (Heald) ('58) Wharton  
 Terry Lee ('68) & Faye Marie (Attaway) ('68) Whitworth  
 Blanford Dean Williams ('74)  
 Ellen Gail Williams  
 Betty (Collop) Williamson ('43)  
 Janet Faye (Burchett) Willman ('68)  
 Dollie (Hesser) Wilson ('43)  
 George M. ('36) & Nadine (Bondurant) ('33) Wilson  
 Herman P. Wilson  
 James A. & Nancy J. Wilson  
 Lisa Marie Winger ('84)  
 Norma Jean (Johnson) Winslow ('72)  
 Joseph E. Wolf ('62)  
 Stephen Lee ('80) & Nancy A. ('80) Wolf  
 Gail M. (Gerdes) Wood ('78)  
 Randal Eugene ('81) & Cynthia E. (Elliott) ('81) Woodard  
 Eleanor A. Yackley ('65)  
 C. Melayne (Heape) Yocum ('75)  
 Robert A. Young  
 Donald Keith Younker ('64)  
 Thomas L. Zerwig  
 Jany's Ann (Murphy) Zimmerman ('55)

## KPMG Peat Marwick's/ NMSU Apple Computer Lab Friends

Cheryl Emge ('88)  
 Bruce Fee ('78)  
 Mark Gandy ('85)  
 Gary Greenwell ('85)  
 Joe Hopkins ('82)  
 Ann Lawson ('86)  
 Jim Newman ('88)  
 Dave Potter ('70)  
 Scott Tate ('89)  
 Ted Weber ('90)  
 Kelly Wilson ('90)



## The John R. Kirk Society

\$300 - up

Clifford H. & Kimberly Ann (Robison) ('68) Ahrens  
Walker ('39) & Doris Allen  
Martin R. Bailey ('70)  
William & Myra (Evans) ('63)  
Baiotto  
Benjamin J. Beard ('75)  
Bradford C. Beard ('75)  
Walter C. & Harriet Beard Jr. ('47)  
Irma L. Beets  
Max E. & Marian Bell  
Edward W. ('53) & Judith (Todd) ('59) Bender  
Raymond Frank ('60) & Mary (Cox) ('60) Bentele  
Charles & Jeanne Blackmar  
Martha B. Boekemeier  
Frederick L. Bosley ('57)  
Henry M. ('31) & Madeline A. (Allen) ('31) Boucher  
Kenneth R. Bounds ('71)  
Vera Burk  
Frank W. Carter ('47)  
Bernice Clark ('26)  
Lloyd Jerome ('72) & Kathy Sue (Harris) ('72) Cleaver  
David Wayne Clithero ('83)  
John Guy & Christina Cochrane ('82)  
Nancy A. Cogan  
Donald & Eileen Coleman  
George Randolph ('32) & Patricia (Hanna) Conner  
Donald & Maurine Crawford  
Wayne A. ('62) & W. Marilyn (Johnson) ('62) Creason  
Gerald V. Cupp ('64)

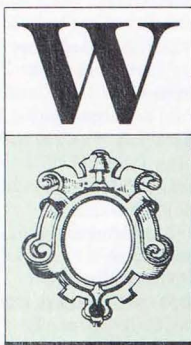
Robert A. & Jane Dager  
Frank Arthur ('70) & Beverly J. Davey  
John ('66) & Jane E. ('66) Eitel  
James & Jean Elliott  
Maria Evans ('81)  
Todd Rittenhouse ('89) & Jane A. Mrazek ('91) Flanders  
Darrell L. ('53) & Sara Beth (Pash) ('79) Fouch  
Richard M. Francis ('50)  
Charlene Franklin  
Wayne A. Frederick ('36)  
Charles & Orrel H. Frost  
Kenneth L. Gardner ('47)  
Jim ('76) & Jill (Ross) Gibley  
Joseph E. Godi  
Alan R. & Sally Graham  
Hortense Greenley ('40)  
Gerald E. Grossnickle ('42)  
George ('29) † & Ruth H. Hamilton  
R. Russell ('55) & Jacquelin (Easley) ('54) Harrison  
W. Edwin ('38) & Hazel ('37) Hartford  
George & Jeanette Hartje  
John J. Hayes  
Margarita L. Heisserer  
Howard M. & Lisa Hickman  
Gary M. ('72) & Theresa Ann Hollingsworth  
Stacey Francis ('61) & Leslie Rose (McKay) ('66) Howell  
Rose A. Hudson  
Randy Lee Hultz ('81)  
Alfred Humphreys  
Kenny & Joanne S. Jackson  
M. Josephine (Cox) Jansons ('39)  
John H. Jepson ('62)  
Connie Holt Jones  
Steven ('70) & Katherine Justice  
Debra K. Kerby ('77)  
Wilbur ('28) & Foreste Kimbley  
Ray E. & Judith R. Klinginsmith  
Gilbert C. & Mary Jane (Walker) ('56) Kohlenberg  
Lois N. Korslund  
James L. & Mary (Huenemann) ('74) La Borde  
Frederick C. ('50) & Grace Lauer  
Marie P. Laughlin  
Sam & Delores R. (Zerr) ('72) Lesseig  
David W. ('51) & Patricia L. (Parsons) ('51) Lintner  
Linda Marie Lovata ('78)  
Miles H. & Nancy M. Lovelace  
R. E. (Bud) Lucas Jr.  
Edna Ludlow  
Larry Allan ('81) & S. Jill Lunsford

James J. Lyons  
L. W. Madsen ('21) †  
W. Jack ('57) & Sue Lee (Brimer) ('55) Magruder  
Melody Kay Marcantonio ('87)  
Dennis D. & Lynnette Markeson  
James F. Martin ('58)  
Viola (Daily) Martin ('56)  
Charles J. McClain  
Howard ('33) & Eva McCully  
Diane Louise McDermott ('69)  
David Franklin McIrvin ('78)  
V. Fran McKinney  
John & Dorothy McLaughlin  
E. L. ('40) † & Alice McNeely  
Paul William ('68) & Donna Rae (Danielsen) ('69) Middeke  
Helen E. (Thompson) Miller ('48)  
Scott Monroe ('77)  
Toni Monroe  
Marian M. Morelock ('31)  
Lanny C. ('62) & C. Beth (Fisher) ('63) Morley  
James Richard ('83) & Bridget J. (Stepnoski) ('82) Morton  
David William ('79) & Judy M. (Wortz) ('74) Mullins  
Dorothy Marie Munch ('81)  
David L. ('52) & Sue (Farmer) Murphy  
Jack & Lee L. Myers  
James R. Nevins ('57)  
David & Verona (Schmidt) ('70) Nichols  
W. Kent Nickerson ('72)  
William & Eva Jane (Weber) ('64) Noe  
William V. ('53) & Joyce H. (Kissner) ('53) North  
K. Angela O'Donnell  
Don Orscheln  
Shinjun Oshiro ('55)  
Lucy Ball Owsley †  
Jack M. Perrin ('60)  
Bill Shane ('82) & Lisa Renee (Ryals) ('83) Pinkerton  
Sammy Presley  
Harold ('31) & Harriet Protiva  
David Richard ('73) & Carol Ann (Deskin) ('72) Rector  
Jack H. Reiske  
Wes & Patsy Remington  
E. Gordon & Norma Richardson  
Kathy Rieck ('73)  
John Epp Riemersma ('71)  
Henry ('39) & Harriett (Sensenich) ('43) Roberts  
Jane (Givens) Rohweder  
Jeffrey Morris ('74) & Marilyn (Casteel) ('78) Romine  
Dean A. ('41) & Amy (Ayres) ('43) Rosebery

Sydney P. ('55) & Jennie Sue (Allen) ('58) Ross  
William & Linnie Ruble  
Vernon Russell ('32)  
Donald L. Schantz  
Dale Robert ('83) & Sharon Kay (Martin) ('83) Schenewerk  
Nancy L. Schneider  
Robert V. ('53) & Anna Mae ('69) Schnucker  
Rhonda Radine (Laird) Schweinbold ('78)  
Frederick D. ('30) & C. Ethel (Cassity) ('32) Schwengel  
Robert D. Shackleton  
James H. & Nancy Shaddy  
Marion A. ('29) & Irene (Atwell) Shanes  
Jacquelyn D. Shofstall †  
Thomas R. & Debra Jo (Kitts) ('75) ShROUT  
Terry B. & Janey Smith  
Henry Smits  
Norma Lee (Chadwick) Spence ('41)  
R. Eric & Melinda Staley  
Kemble ('36) & Mildred (Boehner) ('37) Stout  
Kenneth J. Strahm  
Howard & Kathleen Ann † Strickler  
August & Marian (Porter) ('41) Sunnen Jr.  
Sandra Tague-Kalman ('77)  
John ('78) & Denise (Hemmy) ('77) Teal  
Paul James Thomas  
Jim Toomey  
Ruth Warner Towne ('39)  
Wallace & Ricki C. (Bargman) ('78) Trosen  
Charles R. & Dona (White) ('65) Truitt  
James R. & Laurie Turner  
Alma Ullom  
Libern L. Via ('48)  
Joseph A. & Barbara (Early) ('73) † Vreeland  
Donald E. Walker ('50)  
Milan N. Wall  
Clarence N. & Katherine Warren  
Russell G. Warren  
Betty Jo White ('59)  
John O. ('53) & Jody (Williams) ('54) Wiss  
Keith & Melinda (McKay) ('71) Wood

*A complete donor list to be included in the Northeast Development Fund Annual Report.*

# Why fund-raising?



Why does higher education need to raise money from individuals, corporations and foundations? At a public institution such as Northeast Missouri State University, why are not tuition and tax dollars all the revenue needed to provide the institution with operating funds?

Such questions may seem awfully fundamental, but it is surprising how little is known about the sources of revenue for Northeast Missouri State, and the role of the donor in the success of the institution. Some of the answers may be enlightening.

To begin with, one might mistakenly say donor dollars are not necessary to sustain operations at Northeast. If you have a snapshot of a given day at this University, the money exists to get the University through. But, as with a snapshot, that vision fades, and it doesn't take in the whole landscape.

"Getting through" and being "sustained" are not appropriate goals for Northeast. To accept this stance is to rapidly fall behind. Costs escalate, buildings need repair, state budgets get smaller and allocations shrink, and within very little time, "getting through" and being "sustained" come to mean mediocre and, worse, simply bad.

There is a marvelous parallel to this situation in *Through the Looking Glass*, when Alice runs toward the Queen's palace, only to discover she is farther away than when she started. She runs ever harder, and still falls behind. Finally, she discovers she must run as fast as is humanly possible just to stay in one place.

Such is the financial situation at Northeast. An unpredictable economy, the deterioration of buildings, the near certainty of state budget cutbacks, the always present possibility of the unexpected need; all threaten to bring the University's progress to a standstill. Not only must everyone run as hard as is humanly possible to stay in one place, but all must frequently use creative strategies to get to where we want to go.

Consider this fact, taken from President Warren's letter in this issue. In 1980-81, the State of Missouri funded 78 percent of a student's education, while in 1990-91 that percentage dropped to 62 percent. The University made up the difference by:

- ▶ Raising student tuition,
- ▶ increasing revenues through auxiliary funds and income from special programs,
- ▶ deferring maintenance on buildings.

Donors made up the rest of the difference, and to the extent donors give, and increase their giving, tuition increases are kept to a minimum.

If we look at the other two actions, increasing revenues and deferring maintenance, the full picture becomes even clearer. Certainly, revenue can be found through aux-

iliary programs and special summer efforts, but two limitations exist. First, the education of our students is the primary goal of the University, and there is only so much the University can do in terms of special revenue-generating programs before these efforts cut into the energy, focus and resources needed to educate the traditional student. Second, the mission of the University cannot be compromised. A quality liberal arts and sciences education cannot become vocational, even though vocational programs raise money, without losing ground on fulfillment of mission.

Finally, deferred maintenance and physical plant needs speak for themselves: they cannot be allowed to continue indefinitely.

The capital needs described in the University's five-year mission change plan (1987-1992) exceed \$22 million, but the state of Missouri allocated approximately \$30,000 to the cause. Are we running as fast as we can to stay in one place, or are we losing ground?

Fund-raising at Northeast is really about enhancing the quality of education for the students, but it is becoming more about survival also. The balance changes, as President Warren shows in his letter, as Northeast moves from a publicly supported to a publicly assisted university.

What can the alumni and friends of Northeast do in this looking-glass world?

- ▶ Give to the Development Fund, at any amount, but as generously as possible. Continue to increase your gift each year.
- ▶ Take advantage of matching gift programs at your place of employment. If this is not applicable to you, use your influence at corporations and foundations where you are connected, to look favorably on Northeast as a potential recipient of their gifts.
- ▶ Always speak well of the University. A little word here and a little word there will make a difference.
- ▶ Consider a special scholarship gift to help current students, and remember that no one ever paid the full cost of their own education at Northeast.
- ▶ If you are a Missourian, encourage your political representatives to support favorable allocations of tax dollars to Northeast which, by their own legislation, is Missouri's undergraduate liberal arts and sciences university.
- ▶ Make Northeast Missouri State a priority in your life, and a beneficiary in your will.

Why fund-raising? Because without it, Northeast Missouri State University is just one of many thousands of colleges and universities: with it, Northeast is a place of distinction, a place of excellence, and a place one step closer to becoming the finest public undergraduate liberal arts and sciences university in the nation.

R. Eric Staley, dean of advancement

*Always  
speak well  
of the  
University.*

*Make  
Northeast  
a priority.*

# Tel-Alumni '92 on the Horizon

Tel-Alumni '92 begins on January 19, 1992 and continues through February 20, 1992. Once again, Northeast students, faculty and staff will ask alumni for their support through donations to the Northeast Missouri State University Development Fund, which provides for scholarships, faculty awards and faculty development, cultural events, and academic program enrichment.

Your contributions play an integral part in making Northeast Missouri State University the finest undergraduate university in the nation. And, if you work for a matching gift company, you can double or even triple the amount of your gift!

We look forward to a prosperous new year and to speaking with each of you. Help us attain the \$120,000 goal.

1992 Goal: \$120,000



Student Scholarships



Academic Programs

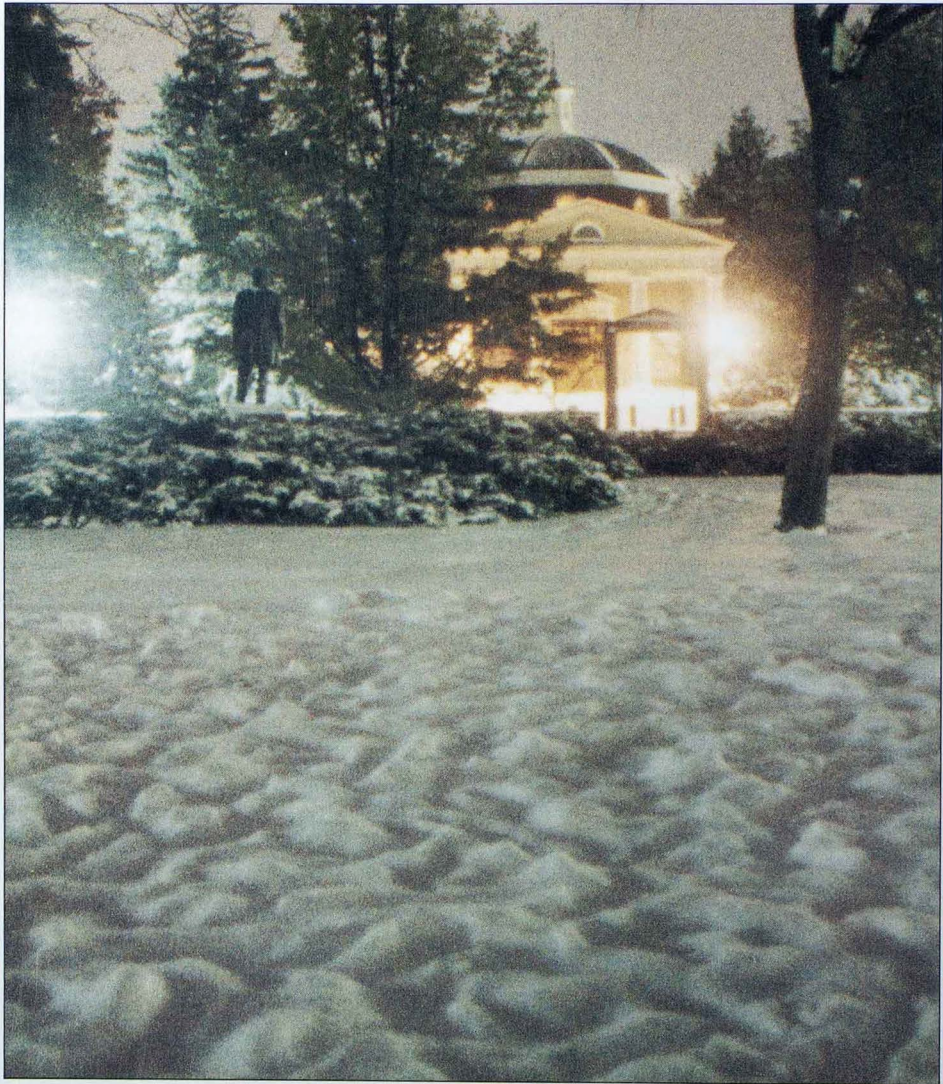


Faculty Development



or Give to Unrestricted Needs

NORTHEAST MISSOURI STATE UNIVERSITY



*First Snow '91 Kirk Memorial, Northeast Missouri State University*

*May the Peace of the Season remain with you in 1992.  
Russell G. Warren,  
the Students, Faculty and Staff of Northeast Missouri State University*



Alumni Association  
McClain Hall 106  
Kirksville, Mo.  
63501

Bulk Rate  
**U.S. Postage Paid**  
Northeast Missouri  
State University