

THE
CLASS
OF
1957



AUGUST
DIVISION

COMMENCEMENT PROGRAM

NORTHEAST MISSOURI
STATE TEACHERS COLLEGE

BOARD OF REGENTS

P. M. MARR, <i>President</i>	Milan
WILLIAM A. BAGLEY, <i>Vice-President</i>	Shelbina
EDWARD E. SWAIN, <i>Secretary</i>	Kirksville
W. A. CABLE	Hannibal
HERBERT I. SEARS	La Plata
NEWTON WAPLES	Kahoka
HUBERT WHEELER, <i>ex officio</i>	Jefferson City

WALTER H. RYLE, PH.D., *President*

ACTIVITIES OF THE SUMMER
GRADUATING CLASSES

ORGANIZATION MEETINGS	WEDNESDAY, JUNE 12
SENIOR PICTURE-TAKING	WEDNESDAY, JULY 10
GRADUATE CLUB PICNIC	THURSDAY, AUGUST 1
BACCALAUREATE SERVICE	SUNDAY, AUGUST 4
SENIOR BANQUET	MONDAY, AUGUST 5
COMMENCEMENT	THURSDAY, AUGUST 8

BACCALAUREATE SERVICE

SUNDAY, AUGUST 4, 1957

8:00 P.M.

DR. WRAY M. RIEGER, *Marshal*

PROCESSIONAL—MARCH FROM “THE MAGIC FLUTE” . . . *Mozart*
DR. FREDERIC KIRCHBERGER, Organist

INVOCATION THE REVEREND JOHN W. WARD
Pastor, Kirksville Methodist Church

RESPONSE COLLEGE CHORUS

ALLELUIA *Randall Thompson*
THE LAST WORDS OF DAVID. *Randall Thompson*
COLLEGE CHORUS, DALLAS DRAPER, Director

INTRODUCTION OF SPEAKER PRESIDENT RYLE

ADDRESS—“THE UNBROKEN RAINBOW”—
THE REVEREND J. JOSEPH TROWER
Pastor, Fellowship Larger Parish, Memphis

BENEDICTION

RESPONSE

RECESSIONAL—MARCH FROM “TANNHAUSER” . . . *Wagner*

THE ACADEMIC PROCESSION
FRIDAY, MAY 17, 1957
FROM BALDWIN HALL
TO KIRK AUDITORIUM

DR. WRAY M. RIEGER, *Marshal*

THE PRESIDENT AND THE SPEAKER

THE BOARD OF REGENTS

THE DEAN OF INSTRUCTION AND THE MINISTER

THE FACULTY

CANDIDATES—

BACHELOR OF SCIENCE IN EDUCATION

BACHELOR OF SCIENCE

BACHELOR OF ARTS

MASTER OF ARTS

OUTDOOR PROCESSIONAL—"MANITEAU HEIGHTS" COLLEGE BAND
PAUL STRUB, Director

LAYING OF WREATH AT THE FOUNDER'S MEMORIAL—

JERRY W. CRAIG
Senior President

AUDITORIUM PROCESSIONAL—"WAR MARCH OF THE PRIESTS"

Mendelssohn
DR. FREDERIC KIRCHBERGER, Organist

COMMENCEMENT

THURSDAY, AUGUST 8, 1957

9:50 A.M.

INVOCATION THE REVEREND ROBERT E. BAHR
Pastor, Faith Lutheran Church, Kirksville

SOLO—"BUT WHO MAY ABIDE THE DAY OF HIS COMING" *Handel*
DALE EVAN BROWN

INTRODUCTION OF DISTINGUISHED
GUESTS AND SPEAKERS PRESIDENT RYLE

ADDRESS—"ASHES—THEIRS AND YOURS"—
HONORABLE FRANK P. BRIGGS
Former United States Senator

ANNOUNCEMENT OF HONORS DEAN SELBY

PRESENTATION AND ACCEPTANCE OF CLASS GIFT

CONFERRING OF DEGREES PRESIDENT RYLE

COLLEGE HYMN—"OLD MISSOU" *Brewer*
Class of 1957

BENEDICTION

RECESSIONAL—MARCH FROM "AIDA" *Verdi*
DR. FREDERIC KIRCHBERGER, Organist

THE SENIOR CLASS

BACHELOR OF SCIENCE IN EDUCATION

Jerry Walker Craig
President

Philip Ward Williams
Vice-President

Gloria Lee Rogers
Secretary

Charles Barton Adams
David Leon Allen
James Edward Almond
Frances I. F. Au
Lillian Ihrig Baker
Edna Ballard
Willa Ruth Barnett
Frances E. Bartee
William T. Barton III
Carroll Dean Bibee
Robert Dean Bingham
Stuart Edwin Block
Frederick Lawrence Bosley
Danny Dean Bradbury
Faye Shaw Bradshaw
Georgia Turpin Bridges
Aubrey Clarence Britt
Mary Virginia Brubaker
Martha Turpin Buchanan
Lola Belle Bunch
Jack L. Christian
Velma L. Clayburg
Russell Dwayne Clayton
William Edward Crabtree
Mary Frances Craig
Verna Mae Craig
Naomi Ruth Creason
Myrtle Crippin
Reva Jean Crocker
Mildred Iris Lane Cunningham
Doris Marie Daniels
Pauline S. Davis
Warren H. Dennis
Lena B. Dennison
Hazel Marie Douglas
Dorothy Vickroy Dowell
Alma Fae Echternacht
William Wesley Edwards
Edna Violet Elsea
Roxie Fae Emmack
Mary Letha Erwin
Billie Kale Forbes
Coe Ailene Ford
Berdie Bedsworth Freiburger
Mildred Shepherd Gardner

Mary Helen Hulse Garnett
Lars Raymond Garton
Naomi Gertrude Gibbs
Dallas E. Gilreath
Leo Francis Goeke
Vera Dale Golston
Frederick H. Gottman
Hazel Mercer Gear
Wilda May Hackney
Betty Frances Hall
Leah Nadine Hall
Norma Jean Halley
Jerry Lee Harp
Judith Lea Hassall
Martha Wilkinson Hill
Charles O. Hinerman
Olga Marie Hogenson
Neal J. Holmes
Wade William Houtchens
Willa Fern Huntsman
Frances Wait Jones
Hazle May Jones
Eva Jolene Kaufman
Virginia Rae Keethler
James Oswald Kelliker
Persis Jean Kennedy
Eleanor Takeko Kuroda
Eula Lois Leslie
Marion Eugene Long
Minetta Fontell Losh
Claire Christine Louden
Lorene Hudson Lowe
George Andrew Lyons
Naomi Lee Mack
Frances C. Mallinckrodt
Paul Francis Marquardt
Joy Lea Martin
William Edward Mayers
Mary Ellen McCabe
Letha Maurine McClure
Donald Lee Miller
Joseph Leon Mitch
Jerome Ellis Moore
Maxine Virginia Mosley
Louis D. Moss
Ida Witte Myers
Amy Rosalia Nicoletti
Henry Lorenzo Noe
Donna Phillips Parsons
Susie Patterson
Orville Baker Peters
James Franklin Premer

BACHELOR OF SCIENCE IN EDUCATION—Continued

Richard D. Pyner
Mary Etta Richards
Ross Claude Richardson
Delber Gene Robison
Norma Jean Robison
Virginia Lee W. Roemer
Frances Shelton Russ
William Aaron Schnelle
Roberta Schweitzer
Donald Ray Shire
Ellis L. Simler
Mary Evelyn Simpson
Loyd John Sinele
Muriel Laura Smith
James Willard Sparks
Michael Pierce Spicer
Leola Faye Stidmon

Bernice Leta Sykes
Marjorie C. Thompson
Nancy Irene Torrey
Esther Larson Turner
Lavena Hanes Turner
Elizabeth Joan Turney
Jean Munson Valbracht
Junius Alexander Vaporean
Claudia F. Walker
Roy Dean Wallace
Frank L. Ward Jr.
Lula Elaine Wellborn
Robert Lee Wells
Donald Dean Williams
Eulalie K. Williams
Morris Duke Wilson

BACHELOR OF SCIENCE

Jack L. Christian
Verdel Ellis
Richard Alan Jones
Yaeko Kaneshiro
Owen Brice Lamb

Frederick William Schekorra
Robert E. Stephens
Lutfullah Tanir
Nes'e Yaveroglu

BACHELOR OF ARTS

Seiichi Arakaki
Kenichi Asato

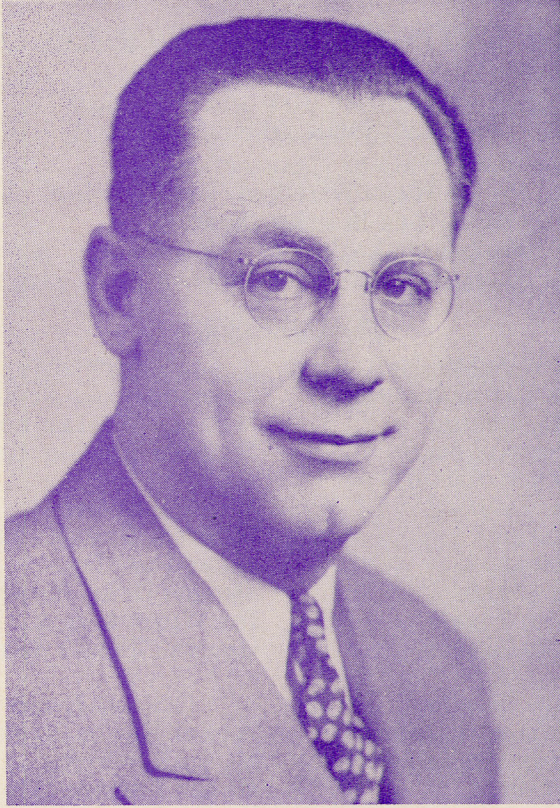
Wade William Houtchens
Eva Jolene Kaufman

MASTER OF ARTS

- GEORGE PETER ANASTASOFF Physical Education
B. S. in Education, Northeast Missouri State Teachers College, 1956
THESIS: *A Comparison of Techniques of Football's Center, Guard and Tackle as Revealed in Coaching Literature*
- PAUL ARTHUR ANDERECK Secondary School Administration
B. S. in Education, Northeast Missouri State Teachers College, 1951
- NORMAN KAY ATKINSON City School Administration
B. S. in Education, Northeast Missouri State Teachers College, 1956
- DON DEAN BANKSON City School Administration
B. S. in Education, Northeast Missouri State Teachers College, 1956
- GERALDINE BONDURANT BARTLETT Business Education
B. S. in Education, Northeast Missouri State Teachers College, 1937
THESIS: *A Study of Bookkeeping Practices in Selected Independent Business Establishments in Kirksville, Missouri*
- CHESTER LEE BOREN City School Administration
B. S. in Education, Northeast Missouri State Teachers College, 1954
- OLEN GENE BRADSHAW Business Education
B. S. in Education, Northeast Missouri State Teachers College, 1953
THESIS: *An Annotated Computation of Motivating Devices in Teaching Secretarial Practice (Omitting Shorthand and Typing)*
- CHARLOTTE ANN BROWN Music Education
B. S. in Education, Northeast Missouri State Teachers College, 1956
THESIS: *Arrangement, Suite for B-Flat Cornet (Telemann)*
- DALE EVAN BROWN Music Education
B. S. in Education, Northeast Missouri State Teachers College, 1956
THESIS: *Vocal Recital*
- KENNETH EUGENE CLARK Secondary School Administration
B. S. in Education, Northeast Missouri State Teachers College, 1951
- JAMES MARVIN COFFEY Secondary School Administration
B. S. in Education, University of Missouri, 1953
- JULIA WHITAKER COLE Elementary School Administration
B. S. in Education, Northeast Missouri State Teachers College, 1951
- LAVAIN CALVIN CURRENT Elementary School Administration
B. S. in Education, Northeast Missouri State Teachers College, 1953
- WILMA IONA DARST Elementary School Administration
B. S. in Education, Northeast Missouri State Teachers College, 1954
- ANTHONY PAUL DEBO, JR. Music Education
B. S. in Education, Northeast Missouri State Teachers College, 1954
THESIS: *Vocal Recital*
- IVAN DANIEL DURKEE. City School Administration
B. S. in Education, Kansas State Teachers College, 1953
- LELAND DOW EASTERDAY. Elementary School Administration
B. S. in Education, Northeast Missouri State Teachers College, 1954
- KENNETH J. FARTHING City School Administration
B. S. in Education, Northeast Missouri State Teachers College, 1952

- DONNA LAMB FISCHER Social Science Education
 B. S. in Education, Northeast Missouri State Teachers College, 1953
 THESIS: *The Historical Development and Operation of the Rural Extension Clinic Program of the Kirksville College of Osteopathy and Surgery*
- ELIZABETH BUFORD GIRTON Elementary School Administration
 B. S. in Education, Northeast Missouri State Teachers College, 1949
- JAMES LEROY GLORE Physical Education
 B. S. in Education, Northeast Missouri State Teachers College, 1956
 THESIS: *A Survey of Injuries Sustained by the St. Louis McKinley High School Football and Basketball Teams in the 1956-57 Seasons*
- NORMAN J. HERNDON City School Administration
 B. S. in Education, Northeast Missouri State Teachers College, 1956
- JACK EMERY HOENSHEL City School Administration
 B. A., Parsons College, 1949
- KATHLEEN SHORT KANDALAFT Elementary School Administration
 B. S., Bob Jones University, 1952
- ALVA ROBERT KOEHN Secondary School Administration
 B. S., Northwestern State College, 1949
- PRESSLY ALVIN LAIRD Social Science Education
 B. S. in Education, Northeast Missouri State Teachers College, 1954
 THESIS: *The Origin, Development, and Decline of the Office of Sheriff in the State of Missouri*
- VERREL T. LEMEN City School Administration
 B. S. in Education, Northeast Missouri State Teachers College, 1955
- LETICIA LIWAG LUNA Music Education
 B. M., Holy Ghost College, 1951
 THESIS: *Piano Recital*
- NORA DORIS O. MARSH Elementary School Administration
 B. S. in Education, Northeast Missouri State Teachers College, 1952
- HARVEY DALE MARTIN Elementary School Administration
 B. S. in Education, Northeast Missouri State Teachers College, 1955
- DONALD HAYES MAXEY Physical Education
 B. S. in Education, Northeast Missouri State Teachers College, 1953
 THESIS: *A Suggested Program for Majors in Men's Physical Education at Northeast Missouri State Teachers College*
- FRANCIS JUNIOR McCABE Elementary School Administration
 B. S. in Education, Northeast Missouri State Teachers College, 1955
- BERTHA BELLE McCLASKEY Business Education
 B. S. in Education, Northeast Missouri State Teachers College, 1953
 THESIS: *An Annotated Compilation of Aids, Devices, and Enrichment Materials for the Instruction of Economics in the Secondary School*
- FRANK ARTHUR MELVIN Physical Education
 B. S. in Education, Northeast Missouri State Teachers College, 1954
 THESIS: *An Evaluation of Audio-Visual Aids for Health, Physical Education, and Recreation with a Study of Their Use in Ninety-Six AAA Missouri Secondary Schools*
- HELEN AGNES MOSS Elementary Education
 B. S. in Education, Northeast Missouri State Teachers College, 1948
- VIRGINIA MINA MOTT Guidance
 B. S. in Education, Northeast Missouri State Teachers College, 1951

- LLOYD DEWAYNE OVERSTREET City School Administration
B. S. in Education, Northeast Missouri State Teachers College, 1954
- FLORENCE KATHYLEEN RACHFORD . . . Elementary School Administration
B. S. in Education, Northeast Missouri State Teachers College, 1949
- HENRY REED, JR. City School Administration
B. S. in Education, Northeast Missouri State Teachers College, 1950
- DOROTHY DORMER RICHARDSON . . . Elementary School Administration
B. A., Northeast Missouri State Teachers College, 1943
- BEULAH GARNER ROGERS Guidance
B. A., Cornell Iowa College, 1927
- MERRILL JAMES ROGERS Physical Education
B. S. in Education, Southwest Missouri State College, 1955
THESIS: *A Guide to Public Relations in Physical Education*
- JAMES WESLEY SANDERS Physical Education
B. S. in Education, Northeast Missouri State Teachers College, 1955
THESIS: *A Survey of Opinions of Athletic Trainers Concerning the Anatomy, Etiology, Prognosis, Prevention and Treatment of Acrolema (Shin Splints)*
- JESSE F. SHAHAN Secondary School Administration
B. S. in Education, Northeast Missouri State Teachers College, 1952
- OTIS ORAL SKINNER City School Administration
B. S. in Education, Northeast Missouri State Teachers College, 1939
- BAXTER BERNELL STINSON Secondary School Administration
B. A., Northeast Missouri State Teachers College, 1950
- ADDIE JANE STOCKHAM Elementary Education
B. S. in Education, Northeast Missouri State Teachers College, 1944
- CECELIA LENORE TABLER Secondary School Administration
B. S. in Education, Northeast Missouri State Teachers College, 1951
- LILLIAN IONE TILLITT Teaching of Mentally Retarded Children
B. S. in Education, Northeast Missouri State Teachers College, 1932
- MARY LOUISE TRENT Elementary School Administration
B. S. in Education, Northeast Missouri State Teachers College, 1940
- ELNA RAE LANGFORD TUCKER . . . Elementary School Administration
B. S. in Education, Northeast Missouri State Teachers College, 1954
- FLOYD EVERETT WADDILL City School Administration
B. S. in Education, Northeast Missouri State Teachers College, 1947
- RICHARD ARLINGTON WALL Music Education
B. S. in Education, Northeast Missouri State Teachers College, 1957
THESIS: *Selected Debussy Preludes Arranged for Augmented Woodwind Ensemble*
- WILLIAM MAURICE WHITWORTH . . . Elementary School Administration
B. S. in Education, Northeast Missouri State Teachers College, 1947
- FRANK ARRINGTON WILEY City School Administration
B. S. in Education, Northeast Missouri State Teachers College, 1954
- BERNAH ELAINE WILLIAMSON . . . Elementary School Administration
B. S. in Education, Northeast Missouri State Teachers College, 1952
- SARAH MARIA WIMP Secondary School Administration
B. S. in Education, Northeast Missouri State Teachers College, 1929
- FUMIKO YANO English Education
B. S., Tsuda College, 1955
THESIS: *Coleridge's Criticism of His Contemporaries*



SENATOR BRIGGS

Frank P. Briggs, former state senator and former United States Senator, was born at Armstrong, Missouri; was a student at Central College for three years; and received a bachelor of journalism degree from the University of Missouri. He has served as editor of newspapers in Fayette, Moberly, and Trenton, in Missouri, and at Shawnee, Oklahoma. Since 1924 he has been the editor and owner of the Macon Chronicle-Herald. He was mayor of Macon in 1930-33, and a member of the Missouri State Senate from 1933 to 1945. He was president of the Senate from 1941 to 1945. He resigned from the State Senate to become United States Senator from Missouri on January 18, 1945, succeeding the man who was to become vice-president and later president, Harry S. Truman. He served until January, 1947. Senator Briggs is a member of Sigma Delta Chi, the Masons, the Elks, Rotary, and the National Press Club of Washington. He has been a member of the Missouri Conservation Commission for ten years and is due to be named Grand Master of the Grand Lodge of Missouri, A. F. and A. M., in September.

