

# NORTHEAST

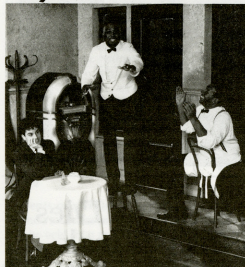
# Today

Northeast Missouri State University

Vol. 13 No. 1

January 14, 1990

## Lyceum Presents *Master Harold*



The Lyceum Series will feature the Asolo Theatre Company's presentation of the critically acclaimed play *"Master Harold... and the boys"* at 8 p.m., Jan. 16, in Baldwin Auditorium. Free tickets for students, faculty and staff are available at the Student Activities Board Office, SUB, and at the door.

The play examines the delicate relationship between a white South African boy, Hally, and the two black servants, Sam and Willy, who work for his parents. Sam is kind of a surrogate parent to the boy, whose real father is crippled and an alcoholic. A confrontation arises when Hally learns of his father's impending return from the

hospital. His fear turns to anger causing him to lash out at Sam, the only person in his life who truly cares.

Master Harold opened on Broadway in 1982 to rave reviews. It featured Zakes Mokae and Danny Glover as Sam and Willy. Later in the run, the role of Sam was played by James Earl Jones.

Jack Boslet will perform the role of Hally. He most recently appeared in *La Cage aux Folles* at the Pittsburgh Playhouse. Other credits of his include *Brighton Beach Memoirs* and *Marat/Sade*. His film and television credits include *Dominick and Eugene* and *Command in Hell*.

cont. pg. 4

## Tel-Alumni Goal Set At \$115,000

The 11th annual Tel-Alumni campaign is scheduled for Jan. 20 through Feb. 21. Tel-Alumni is a phone-a-thon that raises private support for the NMSU Development Fund; the event is organized by the Alumni/Development Office and Student Senate. This year's goal is \$115,000.

Approximately 450 faculty, staff and student volunteers will attempt to contact more than 14,000 alumni across the country.

Calling will be segmented by academic divisions. Thirty phones, located in the Student Union Building Rooms 2 and 3, will be used each evening, Sunday through Thursday from 6:15 to 9:15 p.m. Volunteers will be given a complimentary meal, soft drinks while calling, nightly prizes and after completing three hours of service a three-minute phone call anywhere in the nation.

Proceeds from Tel-Alumni are placed in the NMSU Development Fund, an agency of the University, which receives, manages and distributes all private financial support given to NMSU. Assets of the Fund are invested and the resulting interest income provides funding for

scholarships, student loans, instructional support and other projects supplementing state funding. For the year ending June 30, 1990, more than \$55,000 in scholarships and nearly \$250,000 in loans were awarded. Since 1980, the NMSU Development Fund has grown steadily and now stands at \$3.1 million.

In addition to raising money, Tel-

Alumni serves as a valuable source of information to the Alumni Office, providing updates on alumni addresses, phone numbers, careers and personal news.

For more information on Tel-Alumni, or if you are interested in volunteering, contact the Alumni/Development Office.

cont. pg. 4

## Administrative Appointments Made

Linda Seidel, associate professor of English, has been appointed associate vice president for academic affairs. As part of her new responsibilities, she will assume the duties of the Graduate Office. Seidel received her bachelor's from Rutgers University and her master's and doctorate from the University of Delaware. She has been on faculty since 1984. Susan Shoaff-Ballanger has resigned her part-time position as associate dean of graduate studies and has requested to return to full-time teaching as associate professor of art.

Lynn Gillette has been appointed asso-

ciate vice president for academic affairs, assuming the position previously held by Tom Churchwell. Gillette received his bachelor's degree from the University of Richmond and his doctorate from Texas A & M University.

In an administrative reassignment, Zelwin Eaton has been named assistant dean of students. Eaton, who joined the University staff in 1970, holds bachelor's and master's degrees from Northeast. Eaton has served in various administrative assignments at the University.

## 49 NMSU Students Chosen For Who's Who

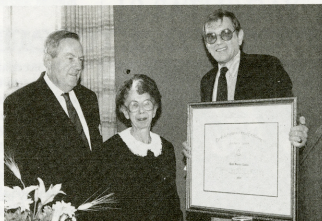
The following 49 students will be included in the 1991 edition of *Who's Who Among Students in American Universities and Colleges*. Students were selected on the basis of scholarship and leadership qualities displayed through participation in academic and co-curricular activities.

Margaret Allen	Denise Carrender	Sarah Hartmann	Diane Keller	Wayne Potter	Liz Root	Melissa Stark
Leslie Barnes	Amy Cheesman	Greg Hinsley	William Kubicki	Linda Power	Michael Sanders	Colleen Stigall
Michelle Barth	Lisa Condra	Doug Hoff	Jenny Lauth	Annette Rayfield	Michelle Schrader	Brenda Volker
Julie Bauer	Kurt Haas	Trey Hoffman	Doug Loucks	Brenda Reiling	Kari Schmidt	George Waddles Jr.
Robert Behnen	James Hall	Angela Howard	Brad Mehrtens	Amy Ricker	Gail Schmitt	Peggy Walker
Amy Backlage	Anne Hamtil	Scot Isom	Tiffany Morton	Julie Ridlen	Angela Shirk	Doug Williams
Jeffrey Breneman	Dawn Hart	Ed Job	Angela Phillips	Stacy Roberts	Adrienne Smith	Jane Yeckel

## Towne Receives Best Article Award

Ruth Towne, professor emeritus of history and dean emeritus of graduate studies, receives the State Historical Society of Missouri's best *Missouri Historical Review* Article Award from Robert Smith, the Society's president (left) and James Goodrich, executive director of the Society (right), at the annual meeting luncheon of the Historical Society, Nov. 10.

The award recognized Towne's article "Marie Turner Harvey and the Rural Life Movement," which appeared in the July 1990 issue of the *Review*. The presentation included a framed citation and a \$300 cash award. (photo by the State Historical Society of Missouri)



## University Players Honored



The University Player's production of *The Bacchae* has been selected to be performed at the 23rd American College Theatre Festival (ACTF), Region V, to be held Jan. 15 through 20 in Lincoln, Neb. An open dress rehearsal of *The Bacchae* will be held at 7:30 p.m., Jan. 14, in Baldwin Auditorium. Admission is free.

The production was selected by a committee of the ACTF from 115 entries from the eight states in District V.

Performances done at the regional festival are eligible for selection for the national festival to be held in Washington, D.C.

*The Bacchae* recounts the mythical struggle of the puritanical tyrant of Thebes, King Pentheus, against the life-affirming

power of the god, Dionysus. The conflict illustrates the Greek concept that goodness is achieved through a balance between all moral factors.

Appearing in the production are Randy Bame, Amy Bollin, Timothy Chott, Derek Donovan, Jeff Huettman, Terri Ince, Dan Krumm, Carrie Mitchell, David Neale, Jason Mueller, Theresa Peters, Diane Peterson, Brian Stull and Brenda Volker.

Pat Vern-Harris, a professional guest artist/teacher at the University, will play in the role of Agave. Music is composed and played by David Dixon. The production is directed by J.G. Severns with scene design by Ron Rybkowski and costume design by Janet Gray, all theatre faculty.

## Student Dies Over Break

Elizabeth-Ann Tyler Barnum, a freshman accounting major, died in a fire that gutted her family's home in Bridgeton, Mo., Dec. 27. She was a resident of Ryle Hall.

## Season's Greetings From Saudi Arabia



Season's Greetings

Northeast alum Dan Hennessy ('68) sent the above greetings to the University over the holidays. Hennessy is serving as a group intelligence officer of a support unit in Saudi Arabia.

"Conditions are O.K. where I am but the young Marines and Army grunts are really suffering. I hope the Ronald K. Cullers Vets Club at the 'U' is organizing some kind of write in or care package effort (as a founder of the Vets Club and a Phi Sig we did a lot of that in the late 60s and early 70s)," wrote Hennessy. Following is his address for anyone wishing to write to him: Maj. Dan Hennessy, HHC 301 ASG, Arcent, Dessert Shield, APO N.Y. 09852-0006.

# N O T A B L E S

"Methodological Pragmatism: The Ends of Inquiry," a paper presented by **Mark Bandas**, assistant professor of philosophy and religion, at the Second International Conference on Argumentation in Amsterdam in July 1990 has been accepted for publication in the Conference's *Proceedings*.

**Jim Barnes**, professor of comparative literature, has been notified by *New Letters*, a magazine of the arts in the University of Missouri-Kansas City, that his poem titled "Wolf Hunting Near Nashoba" will be aired on the nationally syndicated radio program "New Letters Poem for the Day." The program, consisting of a four-minute spot, is a daily feature on National Public Radio in most areas of the country. In addition, Barnes has been selected to serve on the Audience Development Panel of the National Endowment for the Arts. He will join other members of the panel in Washington, D.C., in February. The panel will convene for several days to consider applications for funding from hundreds

of organizations across the nation, including Northeast. Barnes will also be presenting readings of his poetry at Oregon State University and Western Washington University during the third week of January. His most recent book of poetry is *La Plata Cantata*, published in 1989 by Purdue University Press.

**Jerrold Hirsch**, assistant professor of history, recently had a review essay titled "Cherished Values: The New Deal, Cultural Policy, and Public History" published in *The Public Historian*, fall 1990.

**David McCurdy**, assistant professor of chemistry, recently published a chapter titled "Slurry Atomization" in *Sample Introduction in Atomic Spectroscopy*, a book published by Elsevier Science Publishing Co. Co-authors on the work were Andrew E. Weber, a Northeast chemistry alumnus, Steven E. Hughes and Robert C. Fry of Kansas State University.

**Steve Smith**, assistant professor of math, recently had an article titled "Optimal Harvesting of an Age-Structured Population" published in *Journal of Mathematical Biology*, October 1990. The journal is available at Pickler Memorial Library.

**Michael Tannenbaum**, assistant professor of biology, recently co-authored an article titled "Sleep and Respiratory Patterns in the Djungarian Hamster" published in the November 1990 issue of *Physiology & Behavior*.

Three social science students will present research in poster format at the annual meeting of the Association for Applied Psychophysiology and Biofeedback at Dallas in March. **Jeff Belcher** will present "The Effect of Auditory Feedback on Diaphragmatic Breathing." **Jason Hollense** will present "Test-Retest Reliability of Resting Baseline Measurements." **Mark Sponset** will present "Maintenance of Diaphragmatic Breathing During Experimental Pain." All three students are junior psychology majors.

# N O T E S

**Students may register for the 1991 Women's Conference**, History of Us, which will be held from noon-7:30 p.m., Feb. 16. Students may register Monday through Friday from 8 a.m. to 5 p.m. in the Student Activities Office, SUB, and from 10:30 a.m. to 6:30 p.m. in the Women's Center, Ryle Hall. There is a \$2 registration fee. The conference is open to all university students.

**Concert security** applications are now available in the SAB Office or the Student Activities Office, SUB. Application deadline is noon, Feb. 1.

**The Miss Black and Gold Pageant** will be held at 9 p.m., Jan. 26, at the Best Western Shamrock Inn.

The Jan. 24 meeting of the **National Education Association** meeting will feature Bill McCabe, Uniserv director of the Missouri NEA. The meeting will be held at 6 p.m. in Violette Hall 290.

**Scholarships for accounting students** are available from the Government Finance Officers Association. Senior or graduate students preparing for careers in state or local government finance are eligible to apply. Awards total \$2,000 for undergrads and \$3,500 for grad students. Applications are available in the Financial Aid Office, McClain Hall 100, and the application deadline is Feb. 15.

The first meeting of the **Dog Days 1991** committee will be held at 3:30 p.m., Jan. 23, in the SUB Conference Room. Any interested

students or faculty are welcome to attend. For more information, contact Thad Schuler at 785-4222 or 665-1042.

**Student picture IDs** are available free-of-charge to all students. Students wishing to obtain the optional ID should present another form of identification, such as a library card or driver's license. Student Senate will offer the service from 9 a.m. to 4 p.m., Jan. 22, in the SUB Alumni Room, and Jan. 23 and 29 in the SUB Tangerine Room.

SAB is sponsoring the **10th Annual Dinner/Dessert Theatre** presentation of "Tom Foolery" at 6:30 p.m., Jan. 24 through 27 in the SUB Activities Room. Dinner Theatre tickets cost \$9, \$8 with an SAB sticker and \$13 for the general public. The Dinner Theatre will be held Jan. 25 and 26. A Dessert Theatre will be held Jan. 24 and 27. Tickets for the Dessert Theatre cost \$3 or \$2 with an SAB sticker. Students, faculty and staff tickets are available in the SAB Office, SUB; general public tickets will be available in the SAB Office and the Edna Campbell Book Store.

Homecoming T-shirts are still available in the SUB Office for \$3.

Field House and Truman House are sponsoring **The Masque**, a formal ball for all faculty, staff and students at 8 p.m., Feb. 2 in Ryle Hall. Tickets cost \$15 per couple and may be obtained from Laura Starr, 156 Ryle Hall, 785-5730, or Ken Rhoades, 361 Missouri Hall, 785-5544.

**Applications for summer positions** with Upward Bound are available through the end of January in the Upward Bound Office, Kirk Building 220. Potential positions for certified personnel include program counselors and classroom instructors. Potential positions for non-certified staff include residence hall supervisors (with photography interest) and activities director (recreational/social). Priority consideration will be given to applications completed prior to Feb. 1.

**The 1000 Hills Summer Youth Program** is accepting applications for counselors for the summer 1991 session. Call 785-4439 for information or stop by Baldwin Hall 110 for an application.

**Applications** for two- and three-year Army ROTC scholarships are available. For more information, stop by the Hardman Building or call 785-4453.

Applications are available for **Homecoming 1991** chairperson and assistant chairperson. Forms may be picked up in the Student Activities Office, SUB, and are due Jan. 28. Any student is eligible. For more information, call Denise Rendina at 785-4222.

A 5-on-5 basketball tournament for United Cerebral Palsy, sponsored by Phi Sigma Kappa, will be held Feb. 2 in Pershing Arena. Cost is \$30 per team (\$25 for the first four teams to register). Trophies will be awarded to first, second and consolation teams. All entrants will receive a T-shirt. Teams are limited to six players each.

# THIS WEEK

## 14 MONDAY

• 7:30 p.m.—**Open dress rehearsal of *The Bacchae*** presented by the University Players, Baldwin Auditorium. See p. 2.

## 15 TUESDAY

- **College Level Examination Program (CLEP)**, McClain Hall 103, time to be arranged; also Jan. 16.
- 9 a.m.—**Comprehensive English Language Test (CELT)**, McClain Hall 103
- 6 p.m.—**Japanese Club** meeting.
- SUB 5. For more information about the newly formed organization, contact Candy Gross at 665-8283 or Jenny Lauth at 785-4762.

## 16 WEDNESDAY

- 7:30 p.m.—**CCF Nite**, sponsored by Campus Christian Fellowship, SUB Tangierine Room. CCF Nite will be held at this time every Wednesday.
- 8 p.m.—**"Master Harold"... and the boys** featuring the Asolo Theatre Company, presented by the Lyceum Series, Baldwin Auditorium

## 17 THURSDAY

- 4-9:30 p.m.—**Reading of the entire text of the Bible**, SUB 4. The reading will continue through Jan. 30. Additional times and locations include Jan. 19, 9 a.m.-5 p.m., SUB Conference Room; Jan. 20, 2:30-9:30 p.m.,

SUB Conference Room; Jan. 26, 9 a.m.-5 p.m., SUB 4; Jan. 27, 2-4:30 p.m., SUB 4.

## 18 FRIDAY

- 8 a.m.—**General Education Development Test (GED)**, McClain Hall 103
- 7 p.m.—**CCF party** at the Campus Christian Fellowship house.

## 19 SATURDAY

- 8 a.m.—**Real Estate Licensing Exam (RELE)**, McClain Hall 103
- 5:30 p.m.—**Women's basketball** vs. Missouri Southern, Pershing Arena
- 7:30 p.m.—**Men's basketball** vs. Missouri Southern, Pershing Arena

## 21 MONDAY

- 2:30-4:30 p.m.—**Symposium** on the "Letter From Birmingham Jail" in honor of Dr. Martin Luther King Jr., SUB Activities Room. Speakers will include Patricia Burton, Robert Cummings, Keith Doubt, Andrew Harleman, David Hartsfield, Jerrold Hirsch, Nicholas Waddles and Helen Warren. Copies of "The Letter from the Birmingham Jail" may be picked up in the Division of Social Science Office, McClain Hall 214, before the Symposium.

## Spring Courses Offered

The following three courses will be offered during the spring semester. For more information, contact the Division of Professional Development, Baldwin Hall 110, or call 785-4129.

**VIDE 593 Principles of Cooperative Vocational Education** will be offered from 7 to 10 p.m. on Mondays in Barnett Hall 136 beginning Jan. 14. The course is worth three semester hours of graduate or undergraduate credit. The course includes a study of the principles and methods of cooperative vocational education in the public high school or v-tech school and is designed to provide the teacher with skills necessary to conduct cooperative education classes. The course is designed to partially fulfill requirements for certification in cooperative vocational education.

**IS 390 Basic Aviation** will be held from 7 to 10 p.m. on Thursdays in Barnett Hall 225 beginning Jan. 24. The course is worth three semester hours of undergraduate credit. The course will cover pre-flight instruction in civil air regulations, theory of flight, power plant and meteorology. Students will develop skills and knowledge necessary to pass the FAA Private Pilot written examination. Tuition fee is

\$201; books and materials cost extra.

**Machine Woodworking**, the first in a series of non-credit workshops, will be held from 6 to 10 p.m. on Mondays in Barnett Hall 104 beginning Jan. 14. The class will provide students with instruction on the use of basic woodworking machines and selected electric hand tools. During lab time, students will use tools and machines to construct objects. Students will pay for wood and other supplies they use in building their project. Class fee is \$59.

## Master Harold cont.

Darryl Edwards will play Sam. Edwards last appeared in *A Perfect Diamond* at New York's Apple Corps Theater. Other theatre credits include *Of Mice and Men* and *The Colored Museum*. His film credits include *Fort Apache*, *The Bronx*, *Arthur on the Rocks* and an upcoming film *City of Hope*.

In the role of Willie will be Todd Anthony-Jackson, who recently appeared in the Obie Award-winner *Betting on the Dust Commander*. Jackson's performances include John Houseman's production of *Richard III*, *Sarcophagus* and *Macbeth*. He was also seen as Dooley Johnson on ABC's *Loving*.

## Martin Luther King, Jr. Day

January, 21 1991

**Freedom Breakfast**

8 - 10 a.m. ◇ Georgian Room, SUB

**Poetry Reading and audio tape of King's speeches**

noon - 1 p.m. ◇ Georgian Room, SUB

**Evening Program**

7 p.m. ◇ Baldwin Auditorium



## Tel-Alumni cont.

McClain Hall 101, at 785-4125, or call one of the following coordinators:

<b>Student Senate</b>	
Norman Smith	785-4193
<b>Business &amp; Accountancy</b>	
Robert Dager	785-4346
<b>Communication Disorders</b>	
Ken McGuire	785-4672
<b>Education</b>	
Gordon Richardson	785-4395
<b>Fine Arts</b>	
Tom Hueber	785-4433
Bob Jones	785-7248
Ron Rybkowski	785-4512
<b>Health &amp; Exercise Science</b>	
Jane Bartling	785-4466
<b>Language &amp; Literature</b>	
Cole Woodcox	785-4119
<b>Math &amp; Computer Science</b>	
Donna Bailey	785-4556
Sam Lessig	785-4090
<b>Nursing</b>	
Elsie Simms	785-4557
<b>Science</b>	
Max Bell	785-4629
<b>Social Science</b>	
Jim Lyons	785-4636